

11Mbps Wireless LAN USB Adapter

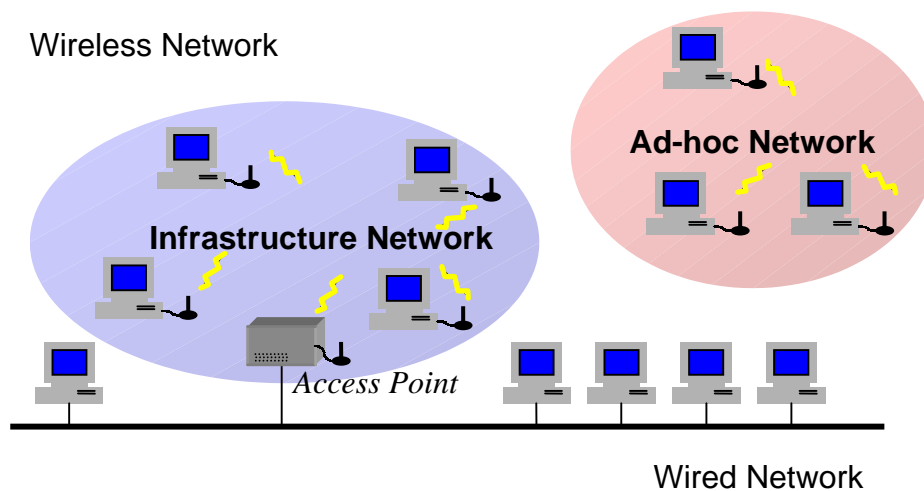
Quick Installation Guide

Version 1.0.0

Network Configuration

11Mbps Wireless USB Adapter provides you the easiest, fastest, way to access your wireless and wired network. The Wireless USB Adapter utilizes the latest advancement of PC industry – USB technology, which allows you to install and use the card reader easier than ever before.

11Mbps Wireless USB Adapter can be operated in Ad-Hoc and Infrastructure network configurations. *Ad-Hoc mode* allows wireless stations to join a Basic Service Set (i.e., peer-to-peer mode, without access point). *Infrastructure mode* allows wireless clients to join an Extended Basic Service Set (i.e., connect to access point)



Package Content

11Mbps Wireless USB Adapter x 1
Quick Installation Guide x 1

Software Floppy Disk x 1

11Mbps Wireless USB Adapter Installation under Windows 98/Windows 2000

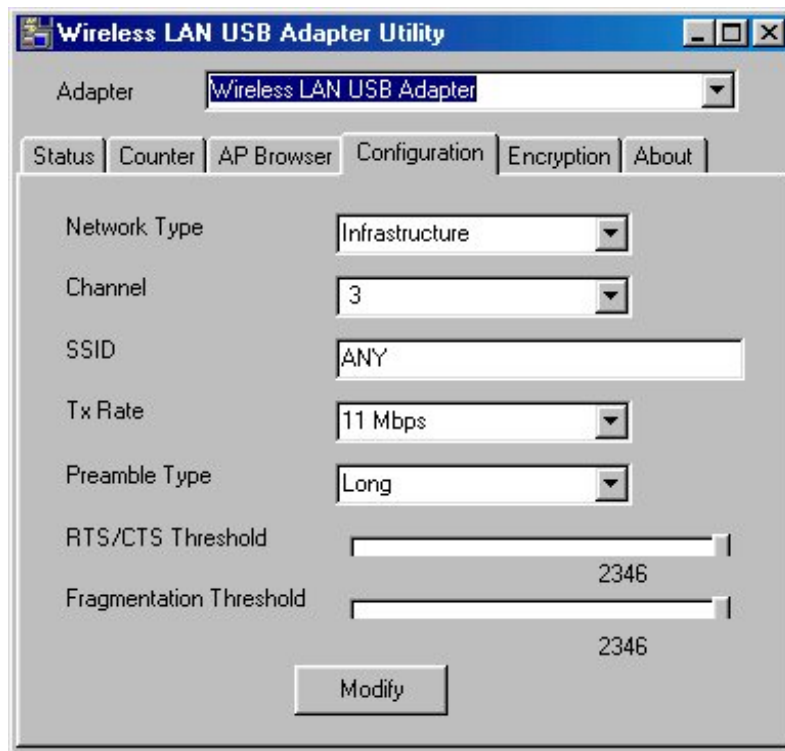
1. Connect the 11Mbps Wireless USB Adapter to the USB port on your computer. The PC will auto-detect the Wireless USB Adapter and a Found New Hardware Wizard windows shows up.
2. Click on **Next** and insert the software floppy disk into the floppy drive. Specify the location where the driver is placed then click on **Next** to continue.
3. The PC will find the corresponding driver. Follow the on-screen instructions to install the 11Mbps Wireless USB Adapter.
4. Click **Finish** to complete the installation. Proceed to the next section to install the Wireless LAN utility for the Wireless LAN USB Adapter.

Installation of Wireless LAN Utility

1. From the **Start** menu, go to **Run** and type **a:\setup.exe**.
2. Follow the on-screen instructions to install the Wireless LAN Utility.
3. Upon completion, go to Program Files and run the Wireless LAN Utility, the utility interface will then appear and configuration can be made.

Use of Wireless LAN Utility

The 11Mbps Wireless LAN Utility provides the following items for you to configure the 11Mbps Wireless USB Adapter:

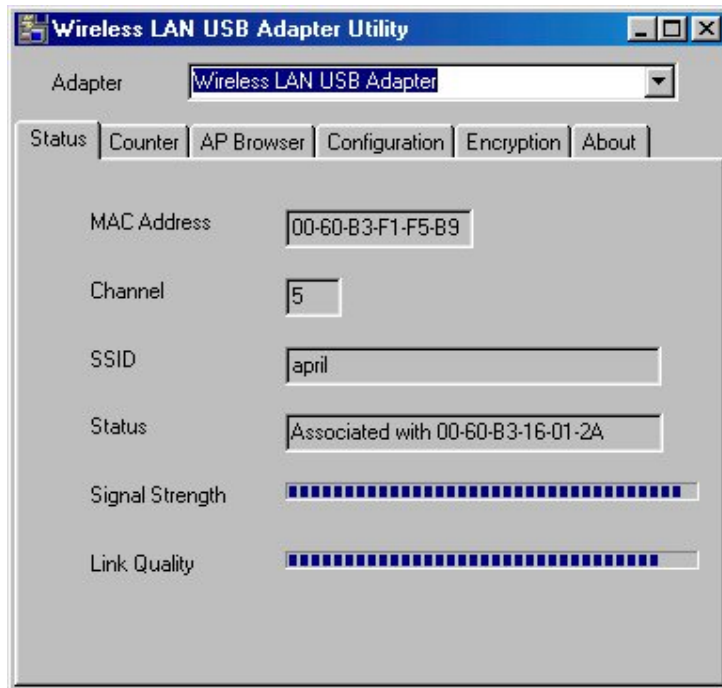


Configuration:

This item allows you to modify the configuration parameters for the 11Mbps Wireless USB Adapter such as Network Type, Channel, SSID, Tx Rate, Preamble Type, RTS/CTS Threshold and Fragmentation Threshold. After making changes on the configuration, click on the **Modify** button to make the changes take affect.

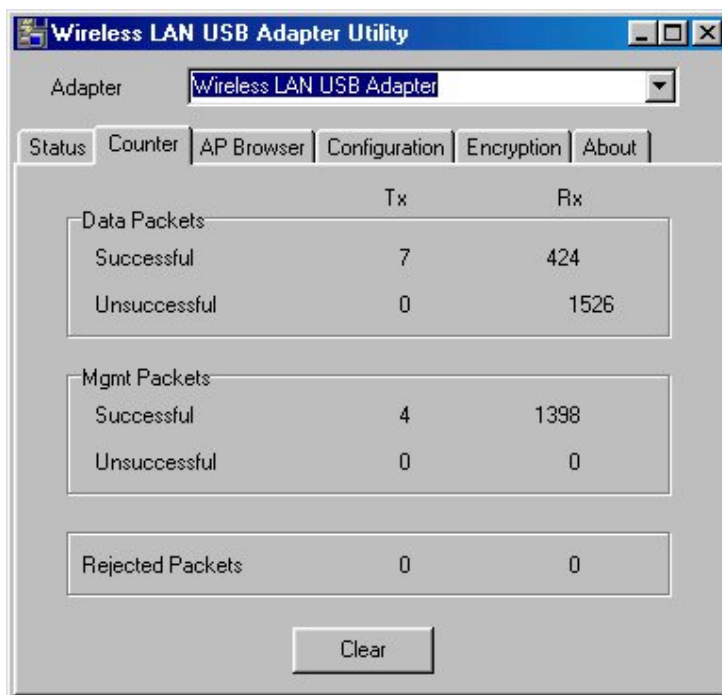
Status:

This item shows the current information on the 11Mbps Wireless LAN USB Adapter such as MAC address, Channel, SSID, Status, Signal Strength and Link Quality.



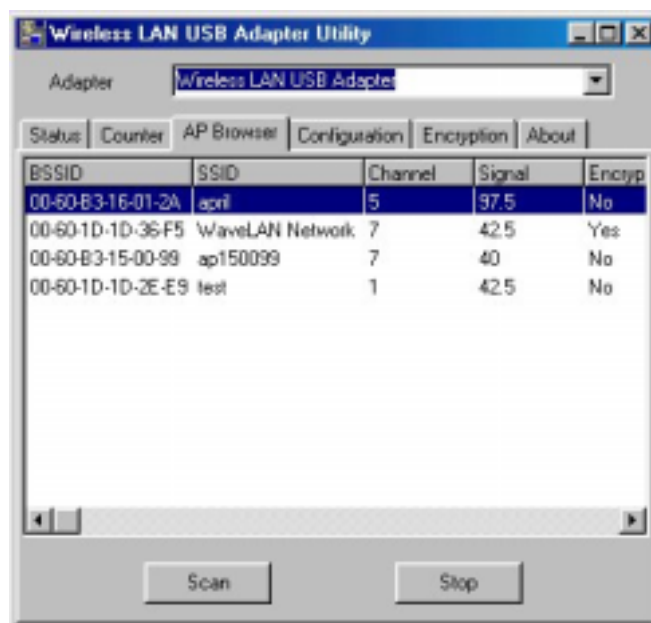
Counter:

You may monitor wireless traffic on the network.



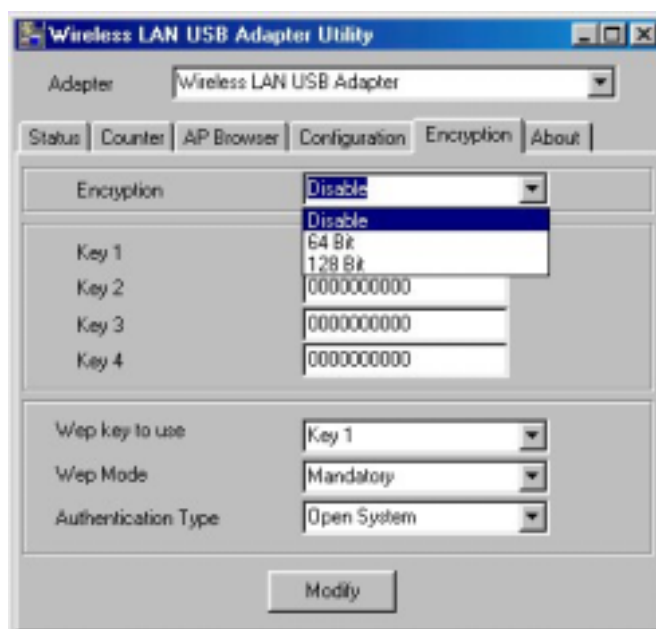
AP Browser:

You may browser all the Access Points available on the network.



Encryption:

The encryption function enables you to encrypt and decrypt you wireless data, making your data more secure. To enable the WEP encryption, select the encryption type, either 64 bit or 128 bit, enter the WEP Keys in the Key field, choose the WEP Key to use and then click **Modify** to make the configuration take affect.



Technical Support

You can find the most recent software and user documentation on the supplier Web site. If you have difficulty resolving the problem while installing or using the 11Mbps Wireless USB Adapter, please contact the supplier for support.

FCC Information

This device complies with Part 15 of the FCC Rules. Operation is subject to the following two conditions: (1) this device may not cause harmful interference, and (2) this device must accept any interference received; including interference that may cause undesired operation.

Federal Communications Commission (FCC) Statement

This Equipment has been tested and found to comply with the limits for a Class B digital device, pursuant to Part 15 of the FCC rules. These limits are designed to provide reasonable protection against harmful interference in a residential installation. This equipment generates, uses and can radiate radio frequency energy and, if not installed and used in accordance with the instructions, may cause harmful interference to radio communications. However, there is no guarantee that interference will not occur in a particular installation. If this equipment does cause harmful interference to radio or television reception, which can be determined by turning the equipment off and on, the user is encouraged to try to correct the interference by one or more of the following measures:

- Reorient or relocate the receiving antenna.
- Increase the separation between the equipment and receiver.
- Connect the equipment into an outlet on a circuit different from that to which the receiver is connected.
- Consult the dealer or an experienced radio/TV technician for help.

The Wireless LAN USB Adapter Specifications

Model	11Mbps Wireless LAN USB Adapter
USB Adapter Standard	USB Interface
Operating Channels	11 for N. America, 14 Japan, 13 Europe (ETSI), 2 Spain, 4 France
Operating Frequency	2.412-2.462 GHz (N. America FCC) 2.412-2.484 GHz (Japan TELEC) 2.412-2.472 GHz (Europe ETSI) 2.457-2.462 GHz (Spain) 2.457-2.472 GHz (France)
Range	11M: 460 feet = 140m (In open environment) 5.5M: 656 feet = 200m 2M: 885 feet = 270m 1M: 1311 feet = 400m
RF Technology	Direct Sequence Spread Spectrum
Modulation	CCK(11Mps, 5.5Mbps) , DQPSK(2Mbps) , DBPSK(1Mbps)
Voltage	5V \pm 10% USB power available
Power Consumption	Tx power consumption: < 350mA Rx power consumption: < 250mA Sleep Mode: 17mA
Output Power	12 dBm
Sensitivity	@PER < 0.08 11Mbps < -83 dBm 5.5Mbps < -86dBm 2Mbps < -89dBm 1Mbps < -91dBm
Data Rate	1,2,5.5,11 Mbps
Media Access Protocol	CSMA/CA, 802.11 Compliant
Support OS	Windows 98/2000/ME