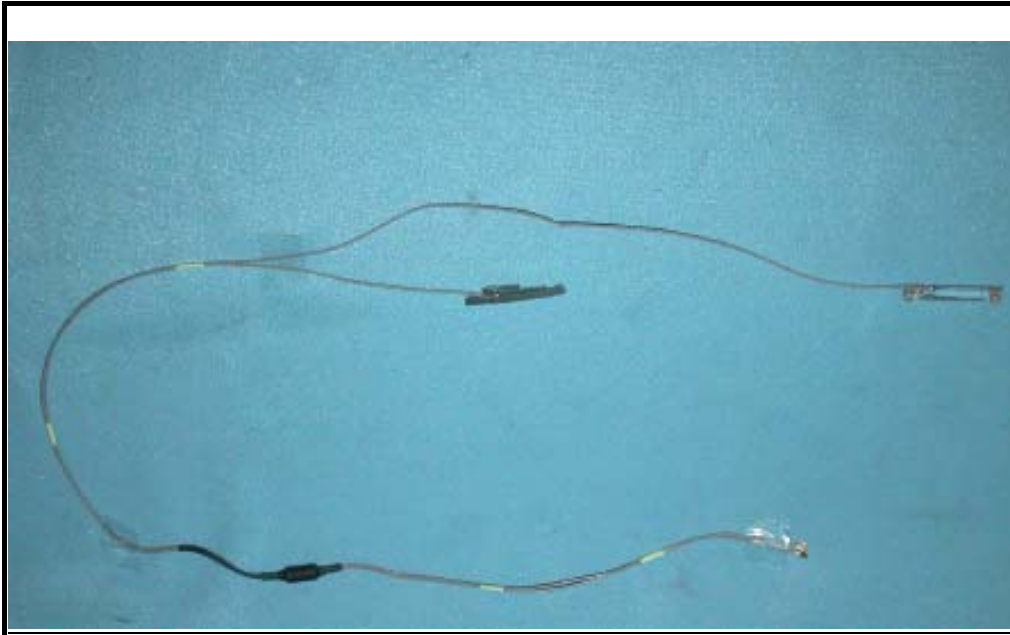
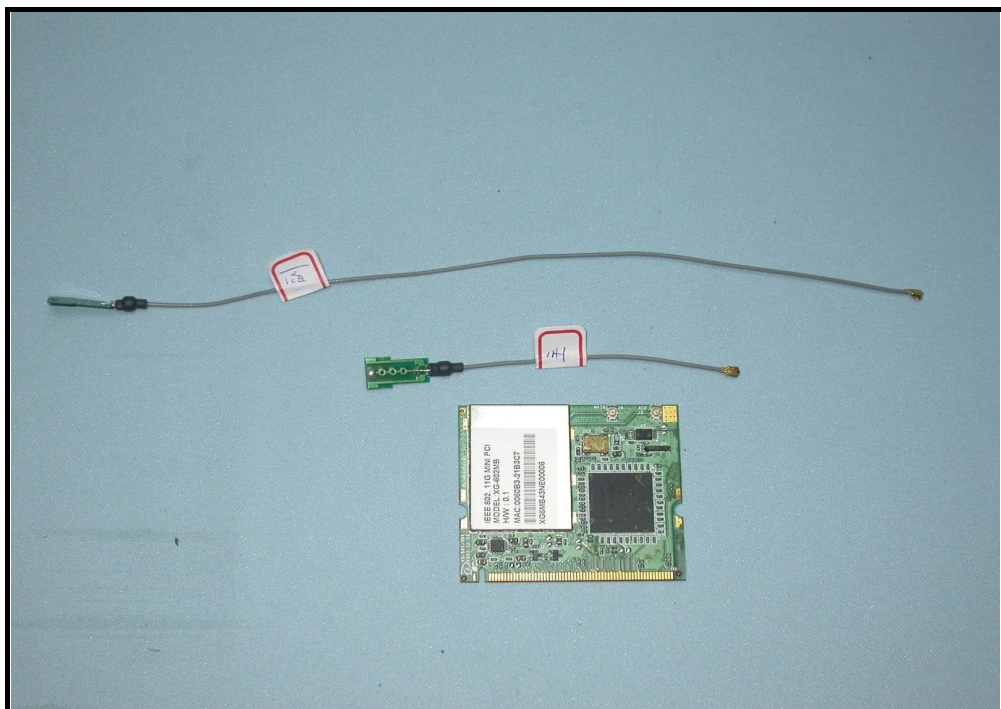


**Class II change apply for XG-602MB** (From:XG-602MB, FCC ID: **M4Y-0XG602**)

Add another one new antenna,see the following :



**XG-602MB (Pifa Antenna, Antenna Gain : 3dBi) Before**



**XG-602MB (PCB Antenna, Antenna Gain : 2.8dBi) After**