

# ***Specific Absorption Rate (SAR) Test Report***

for  
**Z-COM**  
on the  
**802.11b CF Card**  
**Model Number: XI-835C**



Test Report: EME-030344  
Date of Report: April 3, 2003  
Date of test:, March 27, 2003

Total No of Pages Contained in this Report: 59



0597  
ILAC MRA

Accredited for testing to FCC Part 15

Tested by: Bruce Wu	
Reviewed by: Elton Chen	

Review Date: April 4, 2003

All services undertaken are subject to the following general policy: Reports are submitted for exclusive use of the client to whom they are addressed. Their significance is subject to the adequacy and representative character of the samples and to the comprehensiveness of the tests, examinations or surveys made. This report shall not be reproduced except in full, without written consent of Intertek Testing Services, Taiwan Ltd.



# Intertek Testing Services

## ETL SEMKO

FCC ID. : M4Y-0835C

Report No.: EME-030138

Page 2 of 59

### STATEMENT OF COMPLIANCE

The Z-COM sample device, model # XI-835C was evaluated in accordance with the requirements for compliance testing defined in FCC OET Bulletin 65, Supplement C (Edition 01-01). Testing was performed at the Intertek Testing Services facility in Hsinchu, Taiwan.

For the evaluation, the dosimetric assessment system INDEXSAR SARA2 was used. The phantom employed was the box phantom of 2mm thick in one wall. The total uncertainty for the evaluation of the spatial peak SAR values averaged over a cube of 1g tissue mass had been assessed for this system to be  $\pm 27.5\%$ .

The device was tested at their maximum output power declared by the Z-COM

In summary, the maximum spatial peak SAR value for the sample device averaged over 1g was found to be:

<b>Phantom</b>	<b>Position</b>	<b>SAR<sub>1g</sub>, mW/g</b>
2mm thick box phantom wall	The EUT inserted into the left side of notebook PC, with EUT perpendicular to the phantom, 15 mm separation.	0.411 mW/g.

In conclusion, the tested Sample device was found to be in compliance with the requirements defined in OET Bulletin 65, Supplement C (Edition 01-01) for body configurations.



# Intertek Testing Services

## ETL SEMKO

FCC ID. : M4Y-0835C

Report No.: EME-030138

Page 3 of 59

### 1.0 JOB DESCRIPTION

#### 1.1 Client Information

The XI-835C has been tested at the request of:

**Company:** Z-COM, Inc.  
 7F-2, No. 9, Prosperity 1<sup>st</sup> RD., Science-Based  
 Industrial Park, Hsinchu, Taiwan

#### 1.2 Equipment under test (EUT)

##### Product Descriptions:

<b>Equipment</b>	<b>802.11b CF Card</b>		
<b>Trade Name</b>	Z-COM	<b>Model No:</b>	XI-835C
<b>FCC ID</b>	M4Y-0835C	<b>S/N No.</b>	Not Labeled
<b>Category</b>	Portable	<b>RF Exposure</b>	Uncontrolled Environment
<b>Frequency Band</b>	2412 – 2462 MHz	<b>System</b>	DSSS

EUT Antenna Description			
<b>Type</b>	PIFA	<b>Configuration</b>	Fixed
<b>Dimensions</b>	53.8 x 114.6mm	<b>Gain</b>	0 dBi
<b>Location</b>	Embedded		

**Use of Product :** Wireless Data Communication

**Manufacturer:** Z-COM

**Production is planned:**  Yes,  No

**EUT receive date:** Mar. 14, 2003

**EUT received condition:** Good operating condition prototype.

**Test start date:** March 27, 2003

**Test end date:** March 27, 2003



# Intertek Testing Services

## ETL SEMKO

FCC ID. : M4Y-0835C

Report No.: EME-030138

Page 4 of 59

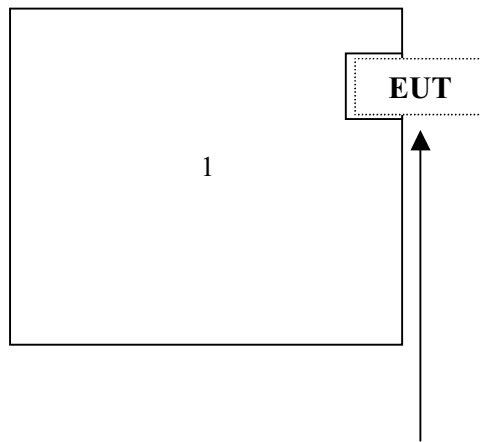
### 1.3 Test plan reference

FCC Rule: Part 2.1093, FCC's OET Bulletin 65, Supplement C (Edition 01-01)

### 1.4 System test configuration

#### 1.4.1 System block diagram & Support equipment

Support Equipment			
Item #	Equipment	Model No.	S/N
1	AceR Laptop Computer	XE <sub>3</sub>	TW20705468



Installed inside laptop with a PCMCIA Slot with a Compact Flash Adapter (lower)



1.4.2 Test Position

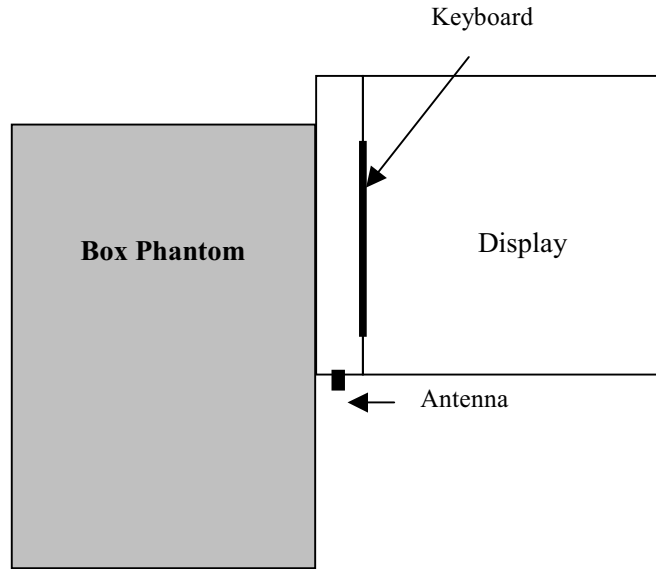


Figure 1: Bottom side of Laptop facing phantom, Touching

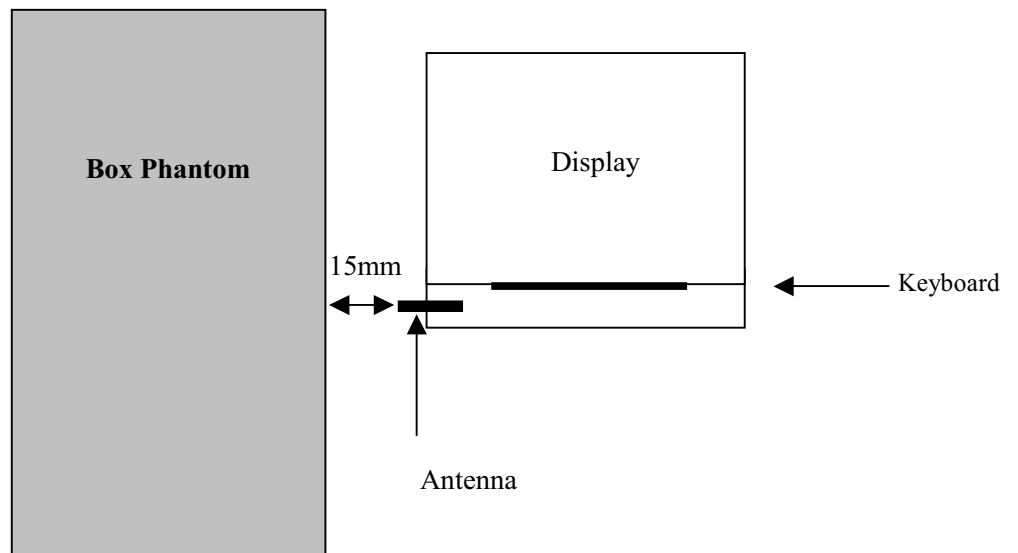


Figure 2: EUT perpendicular to phantom with distance 15 mm



# Intertek Testing Services

## ETL SEMKO

FCC ID. : M4Y-0835C

Report No.: EME-030138

Page 6 of 59

### 1.4.3 Test Condition

During tests the worst-case data (max RF coupling) was determined with following conditions:

Usage	Operates with a portable computer	Distance between antenna axis at the joint and the liquid surface:	Laptop is touching the Phantom in bottom position, separating 15mm in perpendicular position	
Simulating human Head/Body/Hand	Body	EUT Battery	Device is powered from host computer through battery.	
Conducted output Power	Channel	Frequency MHz	Before SAR Test (mW)	After SAR Test (mW)
	Low Channel - 1	2412	16.54	16.54
	Mid Channel - 6	2437	16.16	16.16
	High Channel- 11	2462	15.69	15.69

The spatial peak SAR values were assessed for lowest, middle and highest operating channels, defined by the manufacturer.

The conducted output power was measured before and after the test using an average power meter. Test was performed in read/write data in CF memory in sequence during transmitting mode.

### 1.5 Modifications required for compliance

Intertek Testing Services implemented no modifications.

### 1.6 Additions, deviations and exclusions from standards

The phantom employed was the box phantom of 2mm thick in vertical wall.



# Intertek Testing Services

## ETL SEMKO

FCC ID. : M4Y-0835C

Report No.: EME-030138

Page 7 of 59

## 2.0 SAR EVALUATION

### 2.1 SAR Limits

The following FCC limits for SAR apply to devices operate in General Population/Uncontrolled Exposure environment:

<b>EXPOSURE (General Population/Uncontrolled Exposure environment)</b>	<b>SAR (W/kg)</b>
Average over the whole body	0.08
Spatial Peak (1g)	1.60
Spatial Peak for hands, wrists, feet and ankles (10g)	4.00



2.2 Configuration Photographs

**SAR Measurement Test Setup**

**Test System**







**SAR Measurement Test Setup**

**Bottom side of Laptop facing phantom touching**





**SAR Measurement Test Setup**

**Bottom side of Laptop facing phantom touching – Zoom In**





**SAR Measurement Test Setup**

**EUT perpendicular to phantom, 15 mm separation**





# Intertek Testing Services

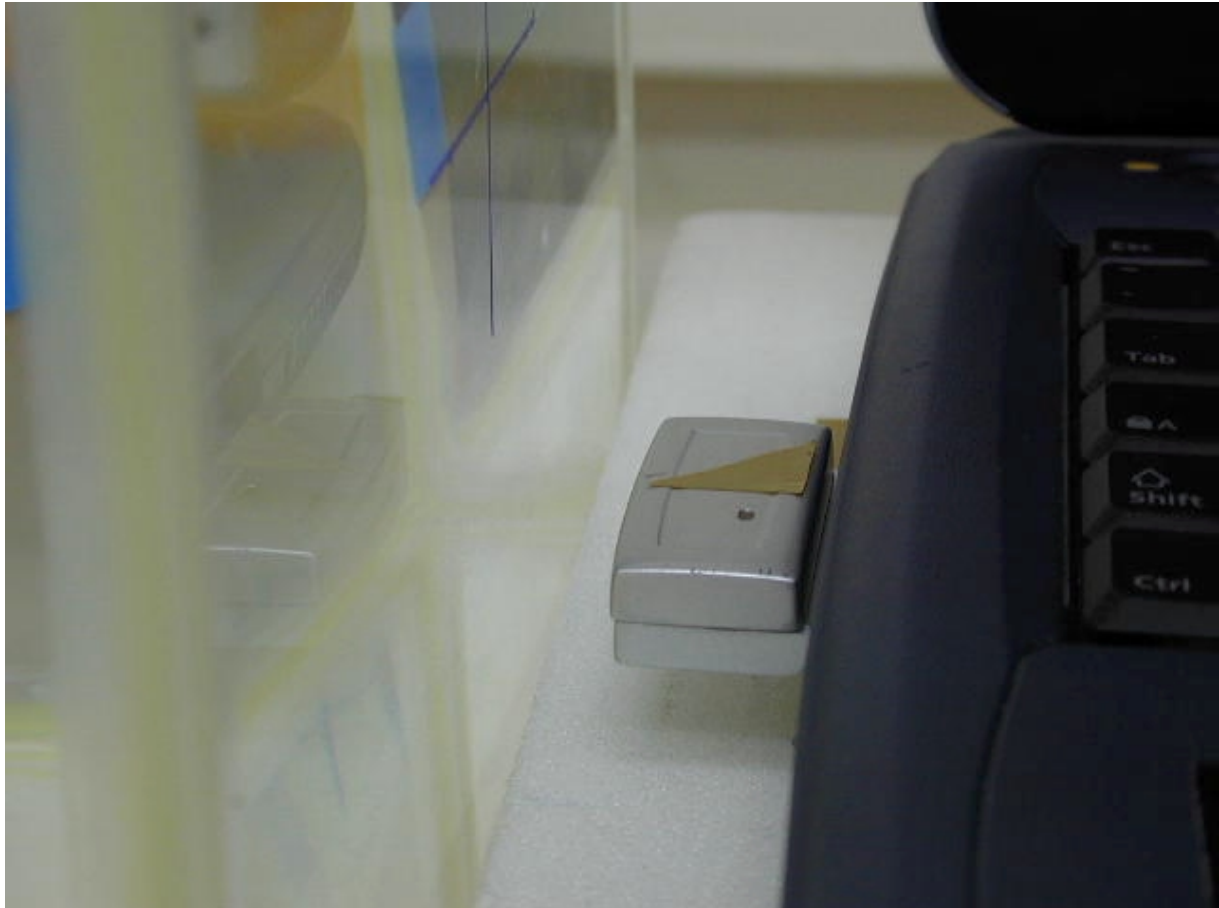
## ETL SEMKO

FCC ID. : M4Y-0835C

Report No.: EME-030138  
Page 12 of 59

### SAR Measurement Test Setup

#### EUT perpendicular to phantom, 15 mm separation – Zoom In





# Intertek Testing Services

## ETL SEMKO

FCC ID. : M4Y-0835C

Report No.: EME-030138

Page 13 of 59

### 2.3 System Validation

Prior to the assessment, the system was verified to the  $\pm 10\%$  of the specifications by using the system validation equipments. The validation was performed at 2450 MHz on the bottom side of box phantom.

Validation Frequency	Targeted SAR <sub>1g</sub> (mW/g)	Measured SAR <sub>1g</sub> (mW/g)	Deviation ( $\pm 10\%$ )
2450MHz	13.1 (52.4/4)	12.844	-1.954%

#### Procedures

The SAR evaluation was performed with the following procedures:

- a. The SAR distribution was measured at the exposed side of the bottom of the box phantom and was measured at a distance of 8 mm from the inner surface of the shell. The feed power was  $1/4W$ .
- b. The dimension for this cube is 32 mm x 32 mm x 34 mm was assessed by measuring 5 x 5 x 7 points. On the basis of this data set, the spatial peak SAR value was evaluated with the following procedure:
  - i) The data at the surface were extrapolated, since the center of the dipoles is 3 mm away from the tip of the probe and the distance between the surface and the lowest measurement point is 5 mm. The extrapolation was based on a least square algorithm. A polynomial of the fourth order was calculated through the points in Z-axes. This polynomial was then used to evaluate the points between the surface and the probe tip.
  - ii) The maximum interpolated value was searched with a straightforward algorithm. Around this maximum, the SAR values averaged over the spatial volumes (1g or 10g) were computed using the 3-D spline interpolation algorithm. The 3-D spline is composed of three one-dimensional splines with the "Not a knot" condition (in x, y and z directions). The volume was integrated with the trapezoidal algorithm. 1000 points (10 x 10 x 10) were interpolated to calculate the average.
  - iii) All neighboring volumes were evaluated until no neighboring volume with a higher average value was found.



# Intertek Testing Services

## ETL SEMKO

FCC ID. : M4Y-0835C

Report No.: EME-030138

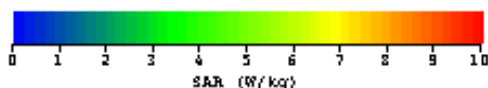
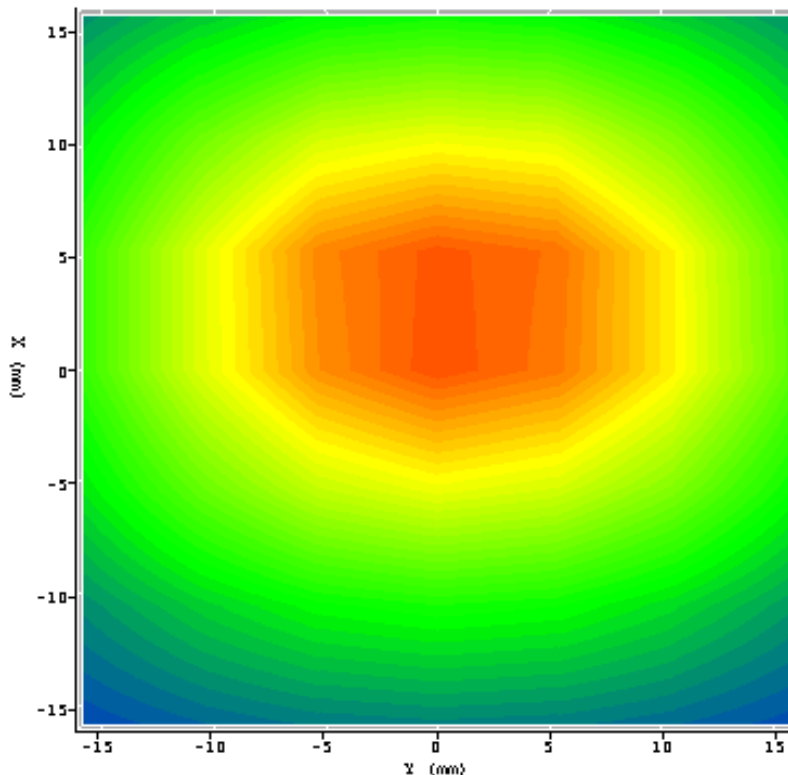
Page 14 of 59

System Validation Plot:

<b>Date:</b>	2003/3/27	<b>Position:</b>	Bottom
<b>Filename:</b>	2450val0327.txt	<b>Phantom:</b>	Box1.csv
<b>Device Tested:</b>	SARA2 system	<b>Head Rotation:</b>	0
<b>Antenna:</b>	2.45GHz dipole	<b>Test Frequency:</b>	2450MHz
<b>Shape File:</b>	none.csv	<b>Power Level:</b>	24dBm CW

<b>Probe:</b>	0114																
<b>Cal File:</b>	SN0114_2450_CW_HEAD																
<b>Cal Factors:</b>	<table border="1"> <thead> <tr> <th></th> <th>X</th> <th>Y</th> <th>Z</th> </tr> </thead> <tbody> <tr> <td><b>Air</b></td> <td>532</td> <td>494</td> <td>450</td> </tr> <tr> <td><b>DCP</b></td> <td>20</td> <td>20</td> <td>20</td> </tr> <tr> <td><b>Lin</b></td> <td>.495</td> <td>.495</td> <td>.495</td> </tr> </tbody> </table>		X	Y	Z	<b>Air</b>	532	494	450	<b>DCP</b>	20	20	20	<b>Lin</b>	.495	.495	.495
		X	Y	Z													
	<b>Air</b>	532	494	450													
	<b>DCP</b>	20	20	20													
<b>Lin</b>	.495	.495	.495														
<b>Amp Gain:</b>	2																
<b>Averaging:</b>	1																
<b>Batteries Replaced:</b>	N/a																

<b>Liquid:</b>	15cm
<b>Type:</b>	2450MHz Head
<b>Conductivity:</b>	1.790
<b>Relative Permittivity:</b>	38.050
<b>Liquid Temp (deg C):</b>	25
<b>Ambient Temp (deg C):</b>	22.1
<b>Ambient RH (%):</b>	63
<b>Density (kg/m3):</b>	1000
<b>Software Version:</b>	0.421N



### ZOOM SCAN RESULTS:

<b>Spot SAR (W/kg):</b>	<b>Start Scan</b>	<b>End Scan</b>

**Change during Scan (%):**  
**Max E-field (V/m):** 68.93

<b>Max SAR (W/kg)</b>	<b>1g</b>	<b>10g</b>
	12.844	5.972

<b>Location of Max (mm):</b>	<b>X</b>	<b>Y</b>	<b>Z</b>
	2.7	1.3	-223.0



# Intertek Testing Services

## ETL SEMKO

FCC ID. : M4Y-0835C

Report No.: EME-030138

Page 15 of 59

### 2.5 Test Results

The results on the following page(s) were obtained when the device was tested in the condition described in this report. Detailed measurement data and plots, which reveal information about the location of the maximum SAR with respect to the device, are reported in Appendix A.



# Intertek Testing Services

## ETL SEMKO

FCC ID. : M4Y-0835C

Report No.: EME-030138

Page 16 of 59

### Measurement Results

<b>Trade Name:</b>	Z-COM	<b>Model No.:</b>	XI-835C
<b>Serial No.:</b>	Not Labeled	<b>Test Engineer:</b>	Bruce Wu
<b>TEST CONDITIONS</b>			
<b>Ambient Temperature</b>	23 °C	<b>Relative Humidity</b>	65 %
<b>Test Signal Source</b>	Test Mode	<b>Signal Modulation</b>	DSSS
<b>Output Power Before SAR Test</b>	See page 7	<b>Output Power After SAR Test</b>	See page 7
<b>Test Duration</b>	22 min. each scan	<b>Number of Battery Change</b>	1

EUT Position						
Channel (MHz)	Operating Mode	Crest Factor	Description	Distance (mm)	Measured SAR <sub>1g</sub> (mW/g)	Plot Number
2437	DSSS	1	Bottom of NoteBook PC	0	0.256	1
2412	DSSS	1	Bottom of NoteBook PC	0	0.194	2
2462	DSSS	1	Bottom of Note Book PC	0	0.354	3
2437	DSSS	1	Perpendicular to phantom	15	0.080	4
2412	DSSS	1	Perpendicular to phantom	15	0.248	5
2462	DSSS	1	Perpendicular to phantom	15	0.411	6

System Verification (2450 MHz Head)					
Frequency MHz	Operating Mode	Target SAR <sub>1g</sub> (mW/g)	Measured SAR <sub>1g</sub> (mW/g)	Deviation (±10%)	Plot Number
2450	CW	52.7	55.79	+5.863%	7

Note: a) Worst case data were reported  
 b) Uncertainty of the system is not included





# Intertek Testing Services

## ETL SEMKO

FCC ID. : M4Y-0835C

Report No.: EME-030138

Page 17 of 59

### 3.0 TEST EQUIPMENT

#### 3.1 Equipment List

The Specific Absorption Rate (SAR) tests were performed with the INDEXSAR SARA2 SYSTEM.

The following major equipment/components were used for the SAR evaluations:

SAR Measurement System			
EQUIPMENT	SPECIFICATIONS	S/N #	LAST CAL. DATE
Robot	Mitsubishi RV-E2	EA009002	N/A
	Repeatability: $\pm 0.04$ mm; Number of Axes: 6		
E-Field Probe	IXP-050	0114	09/06/2002
	Frequency Range: Probe outer diameter: 5 mm; Length: 350 mm; Distance between the probe tip and the dipole center: 3 mm		
Data Acquisition	SARA2	N/A	N/A
	Processor: Pentium 4; Clock speed: 1.5GHz; OS: Windows XP; I/O: two RS232; Software: SARA2 ver. 0.401N;		
Phantom	2mm wall thickness box phantom	N/A	N/A
	Shell Material: clear Perspex; Thickness: $2 \pm 0.1$ mm; Capacity: 154 x 200 x 200 (W x L x D) mm <sup>3</sup> ; Dielectric constant: less than 2.85 above 500MHz;		
Device holder	Material: clear Perspex; Dielectric constant: less than 2.85 above 500MHz	N/A	N/A
Simulated Tissue	Mixture	N/A	01/08/2003
	Please see section 3.2 for details		
RF	Boonton 4231A with 51011-EMC power sensor	79401-32482	03/22/2002
Power Meter	Frequency Range: 0.03 to 8 GHz, <24dBm		
RF	HP 8348A	311A00567	01/13/2003
Power Amplifier	2 to 26.5GHz, Gain >30dB		
Directional	HP 778D	-	08/06/2002
Coupler	0.1 to 2 GHz, Max. Power<500W		
Vector Network Analyzer	HP 8753C	US39173345	12/13/2002
	30k to 3GHz		
Signal Generator	Rohde & Schwarz SMR27	1104.0002.27	08/16/2002
	10M to 27GHz, <120dBuV		



3.2 Body Tissue Simulating Liquid

Body Ingredients Frequency (2.45 GHz)	
DGBE Dilethylene Glycol Butyl Ether	26.7%
Salt	0.04%
Water	73.2%

The dielectric parameters were verified prior to assessment using the HP 85070A dielectric probe kit and the HP 8753C network Analyzer. The dielectric parameters were:

Frequency (MHz)	Temp. (°C)	$\epsilon_r$			$\sigma$ (mho/m)			$\rho$ *(kg/m <sup>3</sup> )
		measured	target	$\Delta(\pm 5\%)$	measured	target	$\Delta(\pm 5\%)$	
2450	23.2	51.54	52.7	-2.2%	1.971	1.95	1.02%	1000

\* *Worst-case assumption*

Test data is included in Appendix B.

Head Ingredients Frequency (2.45 GHz)	
DGBE Dilethylene Glycol	53.3%
Water	46.7%

The dielectric parameters were verified prior to assessment using the HP 85070A dielectric probe kit and the HP 8753C network Analyzer. The dielectric parameters were:

Frequency (MHz)	Temp. (°C)	$\epsilon_r$			$\sigma$ (mho/m)			$\rho$ *(kg/m <sup>3</sup> )
		measured	target	$\Delta(\pm 5\%)$	measured	target	$\Delta(\pm 5\%)$	
2450	25	38.050	39.2	-2.9%	1.791	1.80	-0.5	1000

\* *Worst-case assumption*



# Intertek Testing Services

## ETL SEMKO

FCC ID. : M4Y-0835C

Report No.: EME-030138  
Page 19 of 59

### 3.3 E-Field Probe Calibration

Probe calibration factors are included in Appendix C.



# Intertek Testing Services

## ETL SEMKO

FCC ID. : M4Y-0835C

Report No.: EME-030138

Page 20 of 59

### 3.4 Measurement Uncertainty

The uncertainty budget has been determined for the INDEXSAR SARA2 measurement system according to IEEE P1528 documents [3] and is given in the following table. The extended uncertainty (95% confidence level) was assessed to be 27.5 %

Uncertainty Component	Sec.	(dB)	Tol.(+/-)	(%)	Prob. Dist.	Divisor (descript )	Divisor (value)	c1	Standard Uncertainty (%)	
Measurement System										
Probe Calibration	E 1.1			10	N	1 or k	2	1	5.00	25.00
Axial Isotropy	E 1.2	0.25	5.93	5.93	R	$\sqrt{3}$	1.73	0	0.00	0.00
Hemispherical Isotropy	E 1.2	0.45	10.92	10.92	R	$\sqrt{3}$	1.73	1	6.30	39.73
Boundary effects	E 1.3		4	4.00	R	$\sqrt{3}$	1.73	1	2.31	5.33
Linearity	E 1.4	0.04	0.93	0.93	R	$\sqrt{3}$	1.73	1	0.53	0.29
System Detection Limits	E 1.5		1	1.00	R	$\sqrt{3}$	1.73	1	0.58	0.33
Readout Electronics	E 1.6		1	1.00	N	1 or k	1.73	1	1.00	1.00
Response time	E 1.7		0	0.00	R	$\sqrt{3}$	1.73	1	0.00	0.00
Integration time	E 1.8		1.8	1.80	R	$\sqrt{3}$	1.73	1	1.04	1.08
RF Ambient Conditions	E 5.1		3	3.00	R	$\sqrt{3}$	1.73	1	1.73	3.00
Probe Positioner Mechanical Tolerance	E 5.2		0.6	0.60	R	$\sqrt{3}$	1.73	1	0.35	0.12
Probe Position wrt. Phantom Shell	E 5.3		5	5.00	R	$\sqrt{3}$	1.73	1	2.89	8.33
SAR Evaluation Algorithms	E 4.2		8	8.00	R	$\sqrt{3}$	1.73	1	4.62	21.33
Test Sample Related										
Test Sample Positioning	E 3.2.1		10	10.00	R	$\sqrt{3}$	1.73	1	5.77	33.33
Device Holder Uncertainty	E 3.1.1		10	10.00	R	$\sqrt{3}$	1.73	1	5.77	33.33
Output Power Variation	E 5.6.2		5	4.00	R	$\sqrt{3}$	1.73	0.5	2.89	8.33
Phantom and tissue Parameters										
Phantom Uncertainty (shape and thickness)	E 2.1		4	4.00	R	$\sqrt{3}$	1.73	0.5	1.15	1.33
Liquid conductivity (Deviation from target)	E 2.2		5	5.00	R	$\sqrt{3}$	1.73	0.5	1.44	2.08
Liquid conductivity (Meas. Uncertainty)	E 2.2		10	10.00	R	$\sqrt{3}$	1.73	0.5	2.89	8.33

**Combined standard uncertainty**

**RSS**

**14.0**



# Intertek Testing Services

## ETL SEMKO

FCC ID. : M4Y-0835C

Report No.: EME-030138

Page 21 of 59

### 3.5 Measurement Traceability

All measurements described in this report are traceable to Chinese National Laboratory Accreditation (CNLA) standards or appropriate national standards.



# Intertek Testing Services

## ETL SEMKO

FCC ID. : M4Y-0835C

Report No.: EME-030138  
Page 22 of 59

#### **4.0 WARNING LABEL INFORMATION - USA**

See user manual.



# Intertek Testing Services

## ETL SEMKO

FCC ID. : M4Y-0835C

Report No.: EME-030138

Page 23 of 59

### 5.0 REFERENCES

- [1] ANSI, *ANSI/IEEE C95.1-1991: IEEE Standard for Safety Levels with Respect to Human Exposure to Radio Frequency Electromagnetic Fields, 3kHz to 300 GHz*, The Institute of electrical and Electronics Engineers, Inc., New York, NY 10017, 1992
- [2] Federal Communications Commission, "Evaluating Compliance with FCC Guidelines for Human Exposure to Radiofrequency Electromagnetic Fields", OET Bulletin 65, FCC, Washington, D.C. 20554, 1997
- [3] IEEE Standards Coordinating Committee 34, "DRAFT Recommended Practice for Determining the Peak Spatial-Average Specific Absorption Rate (SAR) in the Human Body Due to Wireless Communications Devices: Experimental Techniques", IEEE Std 1528-200X, Draft CD 1.0 – September 15, 2002



# Intertek Testing Services

## ETL SEMKO

FCC ID. : M4Y-0835C

Report No.: EME-030138

Page 24 of 59

### 5.0 DOCUMENT HISTORY

Revision/ Job Number	Writer Initials	Date	Change
N/A	B.W	April 3, 2003	Original document





# Intertek Testing Services

## ETL SEMKO

FCC ID. : M4Y-0835C

Report No.: EME-030138

Page 25 of 59

### **APPENDIX A - SAR Evaluation Data**

**Power drift** is the measurement of power drift of the device over one complete SAR scan.

To assess the drift of the power of the device under test, a SAR measurement was made in the middle of the zoom scan volume at the start of the scan and a measurement at this point was then also made after the measurement scan. The difference between the two measurements should be less than 5%.



# Intertek Testing Services

## ETL SEMKO

FCC ID. : M4Y-0835C

Report No.: EME-030138

Page 26 of 59

Plot #1 (1/2)

<b>Date:</b>	2003/3/27	<b>Position:</b>	NB Bottom touching phantom/DATA R&W
<b>Filename:</b>	bot2437a	<b>Phantom:</b>	Box1.csv
<b>Device Tested:</b>	XI-835C	<b>Head Rotation:</b>	0
<b>Antenna:</b>	PIFA,0dBi	<b>Test Frequency:</b>	2437MHz
<b>Shape File:</b>	hp NB bottom.csv	<b>Power Level:</b>	16.16dBm

<b>Probe:</b>	0114																
<b>Cal File:</b>	SN0114_2450_CW_BODY																
<b>Cal Factors:</b>	<table border="1"> <thead> <tr> <th></th> <th>X</th> <th>Y</th> <th>Z</th> </tr> </thead> <tbody> <tr> <td><b>Air</b></td> <td>532</td> <td>494</td> <td>450</td> </tr> <tr> <td><b>DCP</b></td> <td>20</td> <td>20</td> <td>20</td> </tr> <tr> <td><b>Lin</b></td> <td>.528</td> <td>.528</td> <td>.528</td> </tr> </tbody> </table>		X	Y	Z	<b>Air</b>	532	494	450	<b>DCP</b>	20	20	20	<b>Lin</b>	.528	.528	.528
		X	Y	Z													
	<b>Air</b>	532	494	450													
	<b>DCP</b>	20	20	20													
<b>Lin</b>	.528	.528	.528														
<b>Amp Gain:</b>	2																
<b>Averaging:</b>	3																
<b>Batteries Replaced:</b>	Mar.27																

<b>Liquid:</b>	15.4cm
<b>Type:</b>	2450MHz body
<b>Conductivity:</b>	1.97
<b>Relative Permittivity:</b>	51.54
<b>Liquid Temp (deg C):</b>	23.8(target 23.2)
<b>Ambient Temp (deg C):</b>	22.
<b>Ambient RH (%):</b>	65
<b>Density (kg/m3):</b>	1000
<b>Software Version:</b>	0.421N

### ZOOM SCAN RESULTS:

<b>Spot SAR (W/kg):</b>	<b>Start Scan</b>	<b>End Scan</b>	
	0.070	0.071	
<b>Change during Scan (%):</b>	2.72		
<b>Max E-field (V/m):</b>	12.94		
<b>Max SAR (W/kg)</b>	<b>1g</b>	<b>10g</b>	
	0.256	0.151	
<b>Location of Max (mm):</b>	<b>X</b>	<b>Y</b>	<b>Z</b>
	75.0	-12.0	-143.1



# Intertek Testing Services

## ETL SEMKO

FCC ID. : M4Y-0835C

Report No.: EME-030138

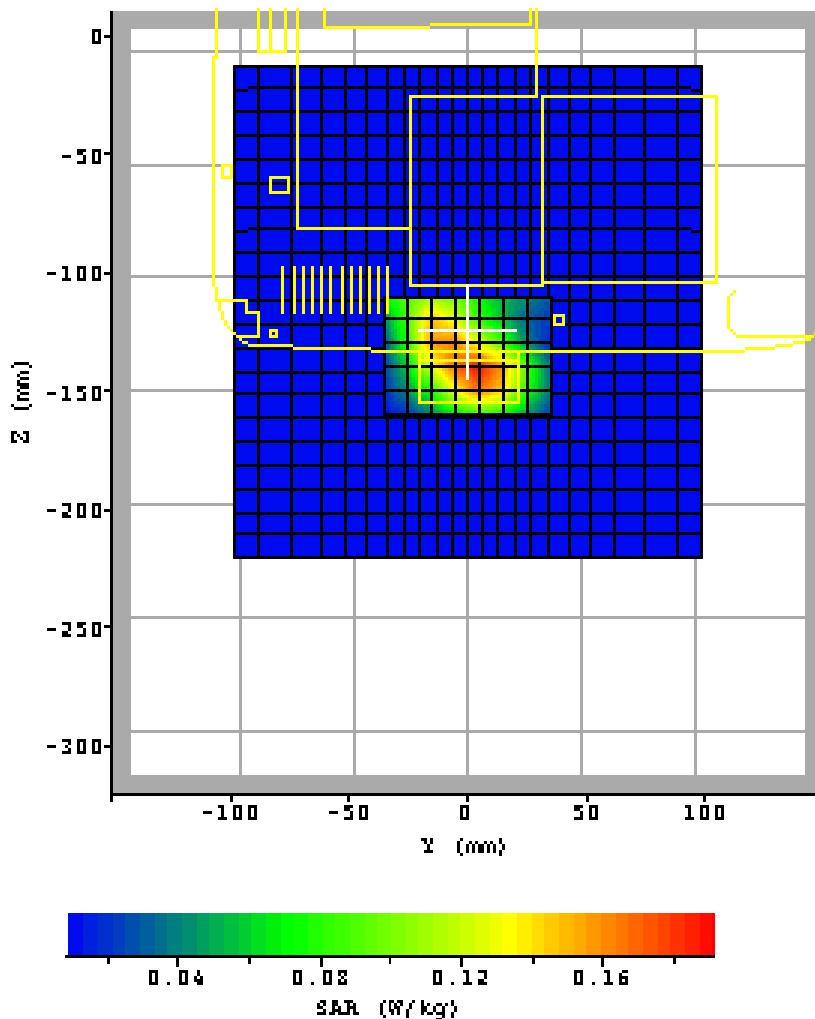
Page 27 of 59

Plot #1 (2/2)

<b>Date:</b>	2003/3/27	<b>Position:</b>	NB Bottom touching phantom/DATA R&W
<b>Filename:</b>	bot2437a	<b>Phantom:</b>	Box1.csv
<b>Device Tested:</b>	XI-835C	<b>Head Rotation:</b>	0
<b>Antenna:</b>	PIFA,0dBi	<b>Test Frequency:</b>	2437MHz
<b>Shape File:</b>	hp NB bottom.csv	<b>Power Level:</b>	16.16dBm

### AREA SCAN:

	Min	Max	Steps
<b>Scan Extent:</b>			
<b>Y</b>	-35.0	35.0	7.0
<b>Z</b>	-160.0	-110.0	5.0





# Intertek Testing Services

## ETL SEMKO

FCC ID. : M4Y-0835C

Report No.: EME-030138

Page 28 of 59

Plot #2 (1/2)

<b>Date:</b>	2003/3/27	<b>Position:</b>	NB Bottom touching phantom/DATA R&W
<b>Filename:</b>	bot2412a	<b>Phantom:</b>	Box1.csv
<b>Device Tested:</b>	XI-835C	<b>Head Rotation:</b>	0
<b>Antenna:</b>	PIFA,0dBi	<b>Test Frequency:</b>	2412MHz
<b>Shape File:</b>	hp NB bottom.csv	<b>Power Level:</b>	16.54dBm

<b>Probe:</b>	0114																
<b>Cal File:</b>	SN0114_2450_CW_BODY																
<b>Cal Factors:</b>	<table border="1"> <thead> <tr> <th></th> <th>X</th> <th>Y</th> <th>Z</th> </tr> </thead> <tbody> <tr> <td><b>Air</b></td> <td>532</td> <td>494</td> <td>450</td> </tr> <tr> <td><b>DCP</b></td> <td>20</td> <td>20</td> <td>20</td> </tr> <tr> <td><b>Lin</b></td> <td>.528</td> <td>.528</td> <td>.528</td> </tr> </tbody> </table>		X	Y	Z	<b>Air</b>	532	494	450	<b>DCP</b>	20	20	20	<b>Lin</b>	.528	.528	.528
		X	Y	Z													
	<b>Air</b>	532	494	450													
	<b>DCP</b>	20	20	20													
<b>Lin</b>	.528	.528	.528														
<b>Amp Gain:</b>	2																
<b>Averaging:</b>	3																
<b>Batteries Replaced:</b>	Mar.27																

<b>Liquid:</b>	15.4cm
<b>Type:</b>	2450MHz body
<b>Conductivity:</b>	1.97
<b>Relative Permittivity:</b>	51.54
<b>Liquid Temp (deg C):</b>	23.3(target 23.2)
<b>Ambient Temp (deg C):</b>	22.4
<b>Ambient RH (%):</b>	66
<b>Density (kg/m3):</b>	1000
<b>Software Version:</b>	0.421N

### ZOOM SCAN RESULTS:

<b>Spot SAR (W/kg):</b>	<b>Start Scan</b>	<b>End Scan</b>	
	0.050	0.051	
<b>Change during Scan (%):</b>	2.72		
<b>Max E-field (V/m):</b>	11.12		
<b>Max SAR (W/kg)</b>	<b>1g</b>	<b>10g</b>	
	0.194	0.124	
<b>Location of Max (mm):</b>	<b>X</b>	<b>Y</b>	<b>Z</b>
	75.0	-14.0	-126.0



# Intertek Testing Services

## ETL SEMKO

FCC ID. : M4Y-0835C

Report No.: EME-030138

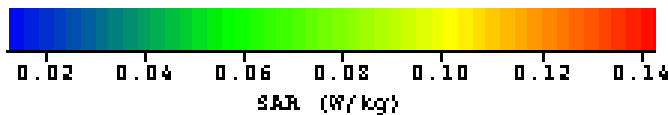
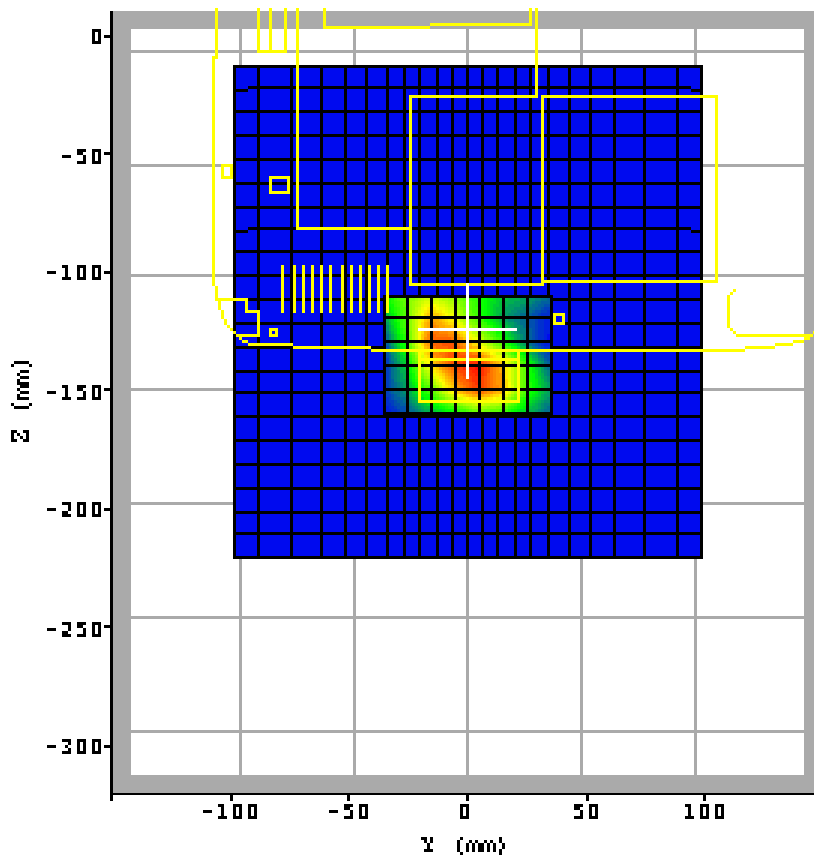
Page 29 of 59

plot #2 (2/2)

<b>Date:</b>	2003/3/27	<b>Position:</b>	NB Bottom touching phantom/DATA R&W
<b>Filename:</b>	bot2412a	<b>Phantom:</b>	Box1.csv
<b>Device Tested:</b>	XI-835C	<b>Head Rotation:</b>	0
<b>Antenna:</b>	PIFA,0dBi	<b>Test Frequency:</b>	2412MHz
<b>Shape File:</b>	hp NB bottom.csv	<b>Power Level:</b>	16.54dBm

### AREA SCAN:

	Min	Max	Steps
<b>Scan Extent:</b>			
<b>Y</b>	-35.0	35.0	7.0
<b>Z</b>	-160.0	-110.0	5.0





# Intertek Testing Services

## ETL SEMKO

FCC ID. : M4Y-0835C

Report No.: EME-030138

Page 30 of 59

plot #3 (1/2)

<b>Date:</b>	2003/3/27	<b>Position:</b>	NB Bottom touching phantom/DATA R&W
<b>Filename:</b>	bot2462a	<b>Phantom:</b>	Box1.csv
<b>Device Tested:</b>	XI-835C	<b>Head Rotation:</b>	0
<b>Antenna:</b>	PIFA,0dBi	<b>Test Frequency:</b>	2462MHz
<b>Shape File:</b>	hp NB bottom.csv	<b>Power Level:</b>	15.69dBm

<b>Probe:</b>	0114																
<b>Cal File:</b>	SN0114_2450_CW_BODY																
<b>Cal Factors:</b>	<table border="1"> <thead> <tr> <th></th> <th>X</th> <th>Y</th> <th>Z</th> </tr> </thead> <tbody> <tr> <td><b>Air</b></td> <td>532</td> <td>494</td> <td>450</td> </tr> <tr> <td><b>DCP</b></td> <td>20</td> <td>20</td> <td>20</td> </tr> <tr> <td><b>Lin</b></td> <td>.528</td> <td>.528</td> <td>.528</td> </tr> </tbody> </table>		X	Y	Z	<b>Air</b>	532	494	450	<b>DCP</b>	20	20	20	<b>Lin</b>	.528	.528	.528
		X	Y	Z													
	<b>Air</b>	532	494	450													
	<b>DCP</b>	20	20	20													
<b>Lin</b>	.528	.528	.528														
<b>Amp Gain:</b>	2																
<b>Averaging:</b>	3																
<b>Batteries Replaced:</b>	Mar.27																

<b>Liquid:</b>	15.4cm
<b>Type:</b>	2450MHz body
<b>Conductivity:</b>	1.97
<b>Relative Permittivity:</b>	51.54
<b>Liquid Temp (deg C):</b>	23.9 (target 23.2)
<b>Ambient Temp (deg C):</b>	22.
<b>Ambient RH (%):</b>	65
<b>Density (kg/m3):</b>	1000
<b>Software Version:</b>	0.421N

### ZOOM SCAN RESULTS:

<b>Spot SAR (W/kg):</b>	<b>Start Scan</b>	<b>End Scan</b>	
	0.101	0.096	
<b>Change during Scan (%):</b>	-4.93		
<b>Max E-field (V/m):</b>	15.16		
<b>Max SAR (W/kg)</b>	<b>1g</b>	<b>10g</b>	
	0.354	0.197	
<b>Location of Max (mm):</b>	<b>X</b>	<b>Y</b>	<b>Z</b>
	75.1	-11.0	-144.1



# Intertek Testing Services

## ETL SEMKO

FCC ID. : M4Y-0835C

Report No.: EME-030138

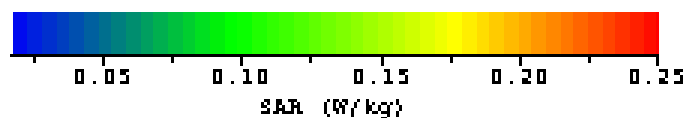
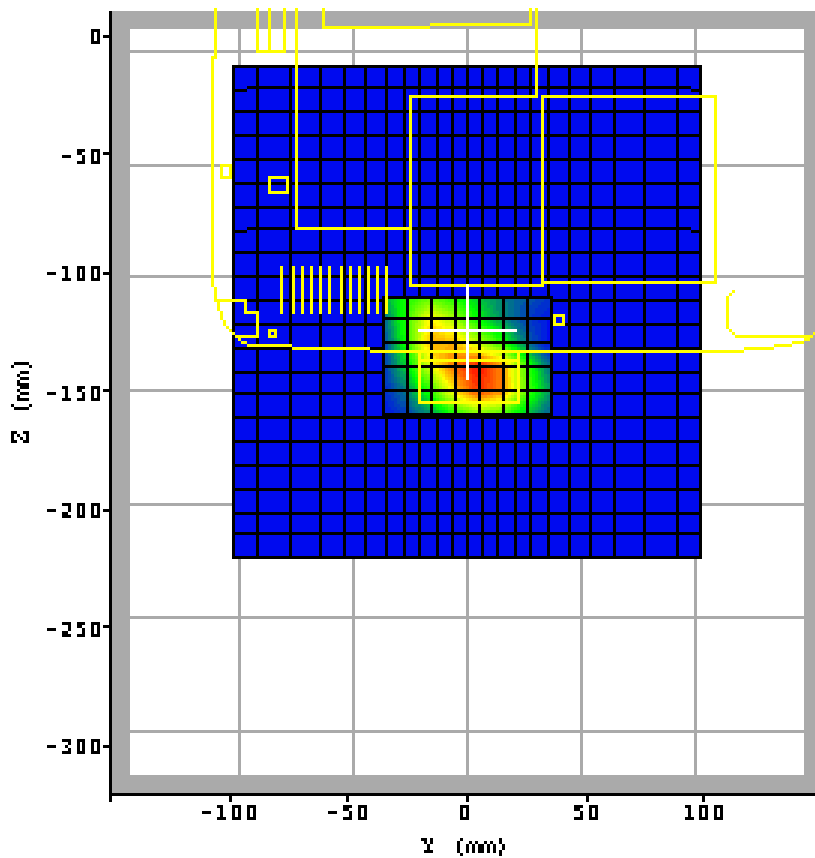
Page 31 of 59

plot #3 (2/2)

<b>Date:</b>	2003/3/27	<b>Position:</b>	NB Bottom touching phantom/DATA R&W
<b>Filename:</b>	bot2462a	<b>Phantom:</b>	Box1.csv
<b>Device Tested:</b>	XI-835C	<b>Head Rotation:</b>	0
<b>Antenna:</b>	PIFA,0dBi	<b>Test Frequency:</b>	2462MHz
<b>Shape File:</b>	hp NB bottom.csv	<b>Power Level:</b>	15.69dBm

### AREA SCAN:

	Min	Max	Steps
<b>Scan Extent:</b>			
<b>Y</b>	-35.0	35.0	7.0
<b>Z</b>	-160.0	-110.0	5.0





# Intertek Testing Services

## ETL SEMKO

FCC ID. : M4Y-0835C

Report No.: EME-030138

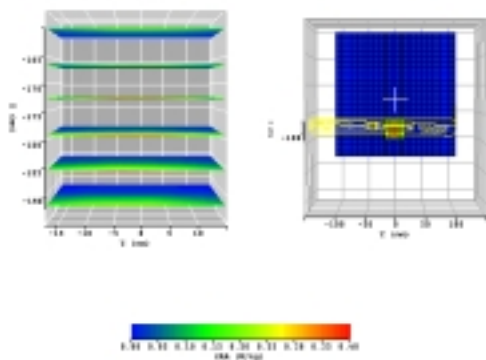
Page 32 of 59

plot #4 (1/2)

<b>Date:</b>	2003/3/27	<b>Position:</b>	perpendicular to phantom 15mm/DATA R&W
<b>Filename:</b>	per15mm2437a	<b>Phantom:</b>	Box1.csv
<b>Device Tested:</b>	XI-835C	<b>Head Rotation:</b>	0
<b>Antenna:</b>	PIFA,0dBi	<b>Test Frequency:</b>	2437MHz
<b>Shape File:</b>	hp NB perpendicular.csv	<b>Power Level:</b>	16.16dBm

<b>Probe:</b>	0114																
<b>Cal File:</b>	SN0114_2450_CW_BODY																
<b>Cal Factors:</b>	<table border="1"> <thead> <tr> <th></th> <th>X</th> <th>Y</th> <th>Z</th> </tr> </thead> <tbody> <tr> <td><b>Air</b></td> <td>532</td> <td>494</td> <td>450</td> </tr> <tr> <td><b>DCP</b></td> <td>20</td> <td>20</td> <td>20</td> </tr> <tr> <td><b>Lin</b></td> <td>.528</td> <td>.528</td> <td>.528</td> </tr> </tbody> </table>		X	Y	Z	<b>Air</b>	532	494	450	<b>DCP</b>	20	20	20	<b>Lin</b>	.528	.528	.528
		X	Y	Z													
	<b>Air</b>	532	494	450													
	<b>DCP</b>	20	20	20													
<b>Lin</b>	.528	.528	.528														
<b>Amp Gain:</b>	2																
<b>Averaging:</b>	3																
<b>Batteries Replaced:</b>	Mar.27																

<b>Liquid:</b>	15.4cm
<b>Type:</b>	2450MHz body
<b>Conductivity:</b>	1.97
<b>Relative Permittivity:</b>	51.54
<b>Liquid Temp (deg C):</b>	23.8 (target 23.2)
<b>Ambient Temp (deg C):</b>	22.2
<b>Ambient RH (%):</b>	65
<b>Density (kg/m3):</b>	1000
<b>Software Version:</b>	0.421N



### ZOOM SCAN RESULTS:

<b>Spot SAR (W/kg):</b>	<b>Start Scan</b>	<b>End Scan</b>	
	0.080	0.079	
<b>Change during Scan (%):</b>	-0.79		
<b>Max E-field (V/m):</b>	13.85		
<b>Max SAR (W/kg)</b>	<b>1g</b>	<b>10g</b>	
	0.304	0.164	
<b>Location of Max (mm):</b>	<b>X</b>	<b>Y</b>	<b>Z</b>
	75.1	-17.0	-177.1





# Intertek Testing Services

## ETL SEMKO

FCC ID. : M4Y-0835C

Report No.: EME-030138

Page 33 of 59

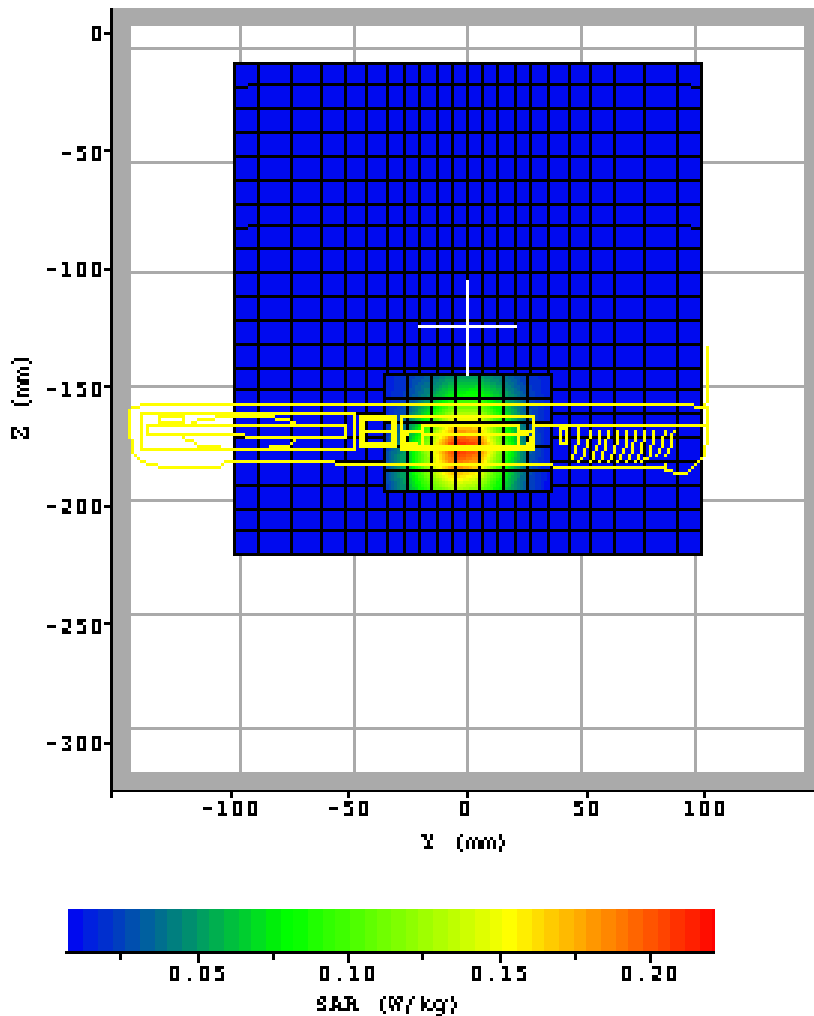
plot #4 (2/2)

<b>Date:</b>	2003/3/27	<b>Position:</b>	perpendicular to phantom 15mm/DATA R&W
<b>Filename:</b>	per15mm2437a	<b>Phantom:</b>	Box1.csv
<b>Device Tested:</b>	XI-835C	<b>Head Rotation:</b>	0
<b>Antenna:</b>	PIFA,0dBi	<b>Test Frequency:</b>	2437MHz
<b>Shape File:</b>	hp NB perpendicular.csv	<b>Power Level:</b>	16.16dBm

### AREA SCAN:

Scan Extent:

	Min	Max	Steps
<b>Y</b>	-35.0	35.0	7.0
<b>Z</b>	-195.0	-145.0	5.0





# Intertek Testing Services

## ETL SEMKO

FCC ID. : M4Y-0835C

Report No.: EME-030138

Page 34 of 59

plot #5 (1/2)

<b>Date:</b>	2003/3/27	<b>Position:</b>	perpendicular to phantom 15mm/DATA R&W
<b>Filename:</b>	per15mm2412.txt	<b>Phantom:</b>	Box1.csv
<b>Device Tested:</b>	XI-835C	<b>Head Rotation:</b>	0
<b>Antenna:</b>	PIFA,0dBi	<b>Test Frequency:</b>	2412MHz
<b>Shape File:</b>	hp NB perpendicular.csv	<b>Power Level:</b>	16.04dBm

<b>Probe:</b>	0114																
<b>Cal File:</b>	SN0114_2450_CW_BODY																
<b>Cal Factors:</b>	<table border="1"> <thead> <tr> <th></th> <th>X</th> <th>Y</th> <th>Z</th> </tr> </thead> <tbody> <tr> <td><b>Air</b></td> <td>532</td> <td>494</td> <td>450</td> </tr> <tr> <td><b>DCP</b></td> <td>20</td> <td>20</td> <td>20</td> </tr> <tr> <td><b>Lin</b></td> <td>.528</td> <td>.528</td> <td>.528</td> </tr> </tbody> </table>		X	Y	Z	<b>Air</b>	532	494	450	<b>DCP</b>	20	20	20	<b>Lin</b>	.528	.528	.528
		X	Y	Z													
	<b>Air</b>	532	494	450													
	<b>DCP</b>	20	20	20													
<b>Lin</b>	.528	.528	.528														
<b>Amp Gain:</b>	2																
<b>Averaging:</b>	3																
<b>Batteries Replaced:</b>	Mar.27																

<b>Liquid:</b>	15.4cm
<b>Type:</b>	2450MHz body
<b>Conductivity:</b>	1.97
<b>Relative Permittivity:</b>	51.54
<b>Liquid Temp (deg C):</b>	23.5 (target 23.2)
<b>Ambient Temp (deg C):</b>	22.2
<b>Ambient RH (%):</b>	65
<b>Density (kg/m3):</b>	1000
<b>Software Version:</b>	0.421N

### ZOOM SCAN RESULTS:

<b>Spot SAR (W/kg):</b>	<b>Start Scan</b>	<b>End Scan</b>	
	0.063	0.065	
<b>Change during Scan (%):</b>	2.90		
<b>Max E-field (V/m):</b>	12.47		
<b>Max SAR (W/kg)</b>	<b>1g</b>	<b>10g</b>	
	0.248	0.135	
<b>Location of Max (mm):</b>	<b>X</b>	<b>Y</b>	<b>Z</b>
	75.1	-18.0	-176.0



# Intertek Testing Services

## ETL SEMKO

FCC ID. : M4Y-0835C

Report No.: EME-030138

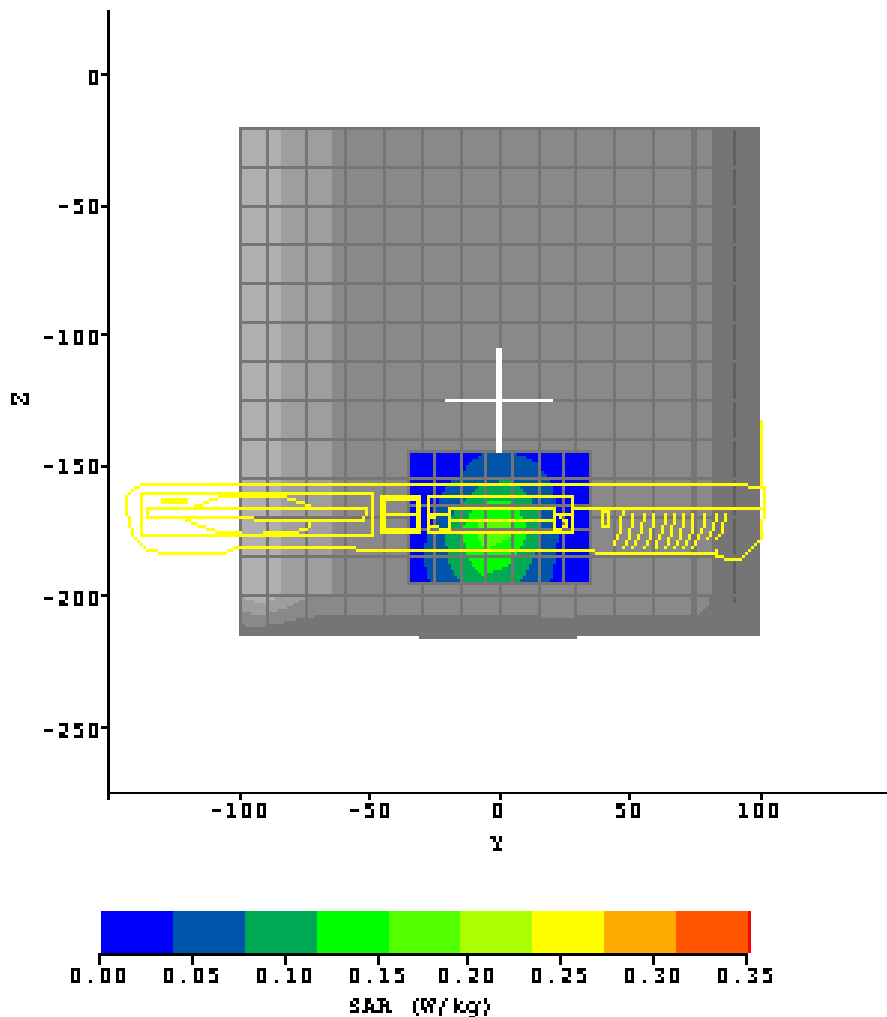
Page 35 of 59

plot #5 (2/2)

<b>Date:</b>	2003/3/27	<b>Position:</b>	perpendicular to phantom 15mm/DATA R&W
<b>Filename:</b>	per15mm2412.txt	<b>Phantom:</b>	Box1.csv
<b>Device Tested:</b>	XI-835C	<b>Head Rotation:</b>	0
<b>Antenna:</b>	PIFA,0dBi	<b>Test Frequency:</b>	2412MHz
<b>Shape File:</b>	hp NB perpendicular.csv	<b>Power Level:</b>	16.04dBm

### AREA SCAN:

	Min	Max	Steps
<b>Scan Extent:</b>			
<b>Y</b>	-35.0	35.0	7.0
<b>Z</b>	-195.0	-145.0	5.0





# Intertek Testing Services

## ETL SEMKO

FCC ID. : M4Y-0835C

Report No.: EME-030138

Page 36 of 59

plot #6 (1/2)

<b>Date:</b>	2003/3/27	<b>Position:</b>	perpendicular to phantom 15mm/DATA R&W
<b>Filename:</b>	per15mm2462a	<b>Phantom:</b>	Box1.csv
<b>Device Tested:</b>	XI-835C	<b>Head Rotation:</b>	0
<b>Antenna:</b>	PIFA,0dBi	<b>Test Frequency:</b>	2462MHz
<b>Shape File:</b>	hp NB perpendicular.csv	<b>Power Level:</b>	15.69dBm

<b>Probe:</b>	0114																
<b>Cal File:</b>	SN0114_2450_CW_BODY																
<b>Cal Factors:</b>	<table border="1"> <thead> <tr> <th></th> <th>X</th> <th>Y</th> <th>Z</th> </tr> </thead> <tbody> <tr> <td><b>Air</b></td> <td>532</td> <td>494</td> <td>450</td> </tr> <tr> <td><b>DCP</b></td> <td>20</td> <td>20</td> <td>20</td> </tr> <tr> <td><b>Lin</b></td> <td>.528</td> <td>.528</td> <td>.528</td> </tr> </tbody> </table>		X	Y	Z	<b>Air</b>	532	494	450	<b>DCP</b>	20	20	20	<b>Lin</b>	.528	.528	.528
		X	Y	Z													
	<b>Air</b>	532	494	450													
	<b>DCP</b>	20	20	20													
<b>Lin</b>	.528	.528	.528														
<b>Amp Gain:</b>	2																
<b>Averaging:</b>	3																
<b>Batteries Replaced:</b>	Mar.27																

<b>Liquid:</b>	15.4cm
<b>Type:</b>	2450MHz body
<b>Conductivity:</b>	1.97
<b>Relative Permittivity:</b>	51.54
<b>Liquid Temp (deg C):</b>	24 (target 23.2)
<b>Ambient Temp (deg C):</b>	22.2
<b>Ambient RH (%):</b>	65
<b>Density (kg/m3):</b>	1000
<b>Software Version:</b>	0.421N

### ZOOM SCAN RESULTS:

<b>Spot SAR (W/kg):</b>	<b>Start Scan</b>	<b>End Scan</b>	
	0.105	0.106	
<b>Change during Scan (%):</b>	0.64		
<b>Max E-field (V/m):</b>	16.05		
<b>Max SAR (W/kg)</b>	<b>1g</b>	<b>10g</b>	
	0.411	0.223	
<b>Location of Max (mm):</b>	<b>X</b>	<b>Y</b>	<b>Z</b>
	75.1	-17.0	-177.1



# Intertek Testing Services

## ETL SEMKO

FCC ID. : M4Y-0835C

Report No.: EME-030138

Page 37 of 59

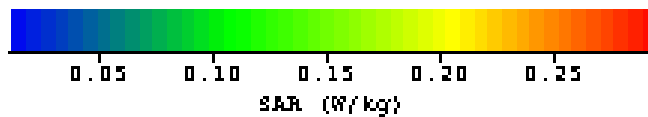
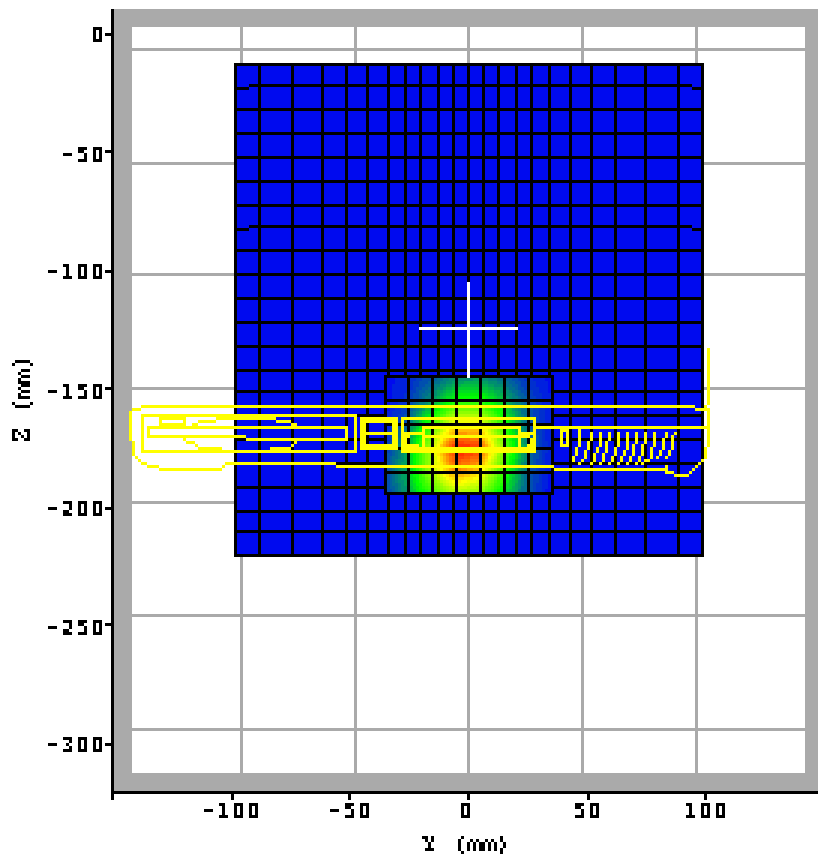
plot #6 (2/2)

<b>Date:</b>	2003/3/27	<b>Position:</b>	perpendicular to phantom 15mm/DATA R&W
<b>Filename:</b>	per15mm2462a	<b>Phantom:</b>	Box1.csv
<b>Device Tested:</b>	XI-835C	<b>Head Rotation:</b>	0
<b>Antenna:</b>	PIFA,0dBi	<b>Test Frequency:</b>	2462MHz
<b>Shape File:</b>	hp NB perpendicular.csv	<b>Power Level:</b>	15.69dBm

### AREA SCAN:

Scan Extent:

	Min	Max	Steps
<b>Y</b>	-35.0	35.0	7.0
<b>Z</b>	-195.0	-145.0	5.0





# Intertek Testing Services

## ETL SEMKO

FCC ID. : M4Y-0835C

Report No.: EME-030138

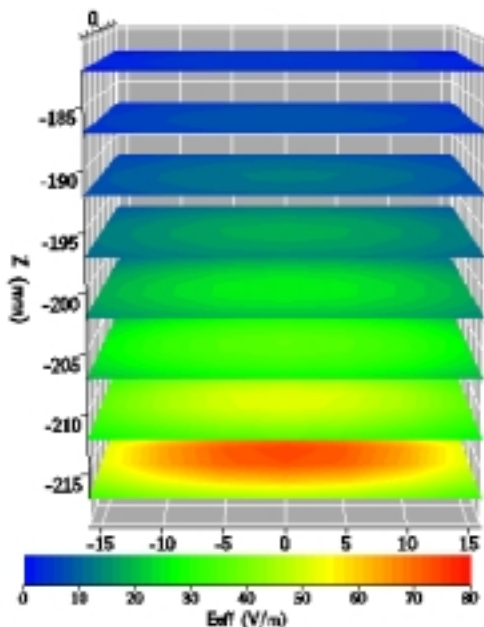
Page 38 of 59

Plot #7

<b>Date:</b>	2003/3/7	<b>Position:</b>	Bottom
<b>Filename:</b>	2450val3-7.txt	<b>Phantom:</b>	Box1.csv
<b>Device Tested:</b>	SARA2 system	<b>Head Rotation:</b>	0
<b>Antenna:</b>	2450dipole	<b>Test Frequency:</b>	2450MHz
<b>Shape File:</b>	none.csv	<b>Power Level:</b>	24dBm /CW

<b>Probe:</b>	0114																
<b>Cal File:</b>	SN0114_2450_CW_HEAD																
<b>Cal Factors:</b>	<table border="1"> <tr> <th></th> <th>X</th> <th>Y</th> <th>Z</th> </tr> <tr> <td>Air</td> <td>532</td> <td>494</td> <td>450</td> </tr> <tr> <td>DCP</td> <td>20</td> <td>20</td> <td>20</td> </tr> <tr> <td>Lin</td> <td>.495</td> <td>.495</td> <td>.495</td> </tr> </table>		X	Y	Z	Air	532	494	450	DCP	20	20	20	Lin	.495	.495	.495
		X	Y	Z													
	Air	532	494	450													
	DCP	20	20	20													
Lin	.495	.495	.495														
<b>Amp Gain:</b>	2																
<b>Averaging:</b>	1																
<b>Batteries Replaced:</b>	N/a																

<b>Liquid:</b>	15.1cm
<b>Type:</b>	2450MHz Head
<b>Conductivity:</b>	1.790
<b>Relative Permittivity:</b>	38.050
<b>Liquid Temp (deg C):</b>	23
<b>Ambient Temp (deg C):</b>	22.1
<b>Ambient RH (%):</b>	63
<b>Density (kg/m3):</b>	1000
<b>Software Version:</b>	0.421N



### ZOOM SCAN RESULTS:

<b>Spot SAR (W/kg):</b>	<b>Start Scan</b>	<b>End Scan</b>

**Change during Scan (%)**

**Max E-field (V/m):** 76.33

<b>Max SAR (W/kg)</b>	<b>1g</b>	<b>10g</b>
	13.9475	6.54

<b>Location of Max (mm):</b>	<b>X</b>	<b>Y</b>	<b>Z</b>
	2.7	1.4	-223.0

Normalized to an input power of 1W  
Averaged over 1 cm<sup>3</sup> (1g) of tissue

**55.79 W/kg**



Intertek Testing Services  
ETL SEMKO

FCC ID. : M4Y-0835C

Report No.: EME-030138  
Page 39 of 59

**APPENDIX B – 2450MHz body liquid Calibration Data**



# Intertek Testing Services

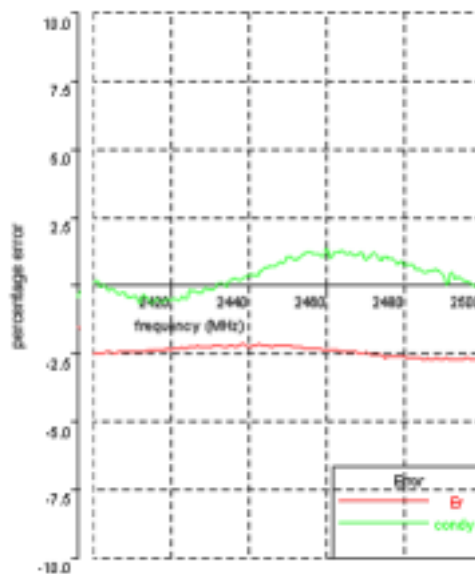
## ETL SEMKO

FCC ID. : M4Y-0835C

Report No.: EME-030138

Page 40 of 59

Date	27 Mar 2003	Temperature	23.2°C	Tested by	Bruce
2400, 51.4561731074, -1.9042983162				2450, 51.5399962214, -1.9709742142	
2401, 51.4618622908, -1.9074318666				2451, 51.5253820963, -1.9714888178	
2402, 51.4491455736, -1.9032053975				2452, 51.5138376197, -1.9712764191	
2403, 51.4597447905, -1.9053580588				2453, 51.506264452, -1.9744307721	
2404, 51.47733312, -1.9024853703				2454, 51.4797118628, -1.9781930314	
2405, 51.4521081981, -1.9049122745				2455, 51.4815882983, -1.9809404159	
2406, 51.4604603699, -1.9024956108				2456, 51.4810253471, -1.9823596219	
2407, 51.4627300203, -1.9028876489				2457, 51.4658651578, -1.9825321803	
2408, 51.473688404, -1.9052446327				2458, 51.4696792746, -1.9842363434	
2409, 51.4764838923, -1.9021558305				2459, 51.4526469091, -1.9834798983	
2410, 51.4664137477, -1.9036953101				2460, 51.4261219609, -1.9905032004	
2411, 51.4688525043, -1.9056549894				2461, 51.4433050331, -1.9855396115	
2412, 51.473792562, -1.9010364732				2462, 51.4351797909, -1.991614928	
2413, 51.4703336505, -1.9080418825				2463, 51.4192833694, -1.9926441596	
2414, 51.4853170469, -1.9075814689				2464, 51.3935248988, -1.9951662021	
2415, 51.4777480721, -1.9039314052				2465, 51.4067807362, -1.9940377601	
2416, 51.4975077921, -1.9081039443				2466, 51.3973497372, -1.9965390767	
2417, 51.4910256185, -1.9076696526				2467, 51.4035945152, -1.996413623	
2418, 51.4910256185, -1.907755336				2468, 51.3752221594, -1.9983473438	
2419, 51.5205793847, -1.9110002928				2469, 51.3657334963, -2.0013612312	
2420, 51.5015907146, -1.9112969669				2470, 51.3821659658, -1.9975422712	
2421, 51.5186299965, -1.913333299				2471, 51.3494044323, -2.000827518	
2422, 51.5199444738, -1.9132995662				2472, 51.3316014489, -2.005838666	
2423, 51.5383678105, -1.9164616343				2473, 51.3302917026, -2.0041845906	
2424, 51.507022345, -1.9159470284				2474, 51.327048332, -2.0023612572	
2425, 51.5535636155, -1.9228209833				2475, 51.2809460611, -2.0067604224	
2426, 51.5434783921, -1.9230193922				2476, 51.3079480027, -2.00626195	
2427, 51.5567729067, -1.9234357151				2477, 51.2992831757, -2.0084710545	
2428, 51.5440327361, -1.9242282308				2478, 51.2936112023, -2.0054399112	
2429, 51.5459115161, -1.9284002105				2479, 51.3011522711, -2.0090308719	
2430, 51.5489798728, -1.9284127939				2480, 51.2836148761, -2.0073938227	
2431, 51.5508588331, -1.9293915476				2481, 51.2549164139, -2.0088742591	
2432, 51.5495434924, -1.9344271731				2482, 51.2473813108, -2.0109721385	
2433, 51.5483972892, -1.9357711193				2483, 51.2577708094, -2.0088889846	
2434, 51.5280836418, -1.9339312378				2484, 51.2502352867, -2.0101724366	
2435, 51.5634320839, -1.938072836				2485, 51.2319064707, -2.0091094983	
2436, 51.5596101838, -1.9410064722				2486, 51.241119396, -2.0114765135	
2437, 51.519783227, -1.9421099893				2487, 51.2241626656, -2.0136195162	
2438, 51.5708848449, -1.9422852073				2488, 51.2399895297, -2.0157126805	
2439, 51.5708848449, -1.9456341184				2489, 51.23507108, -2.0150913632	
2440, 51.520244181, -1.9474993194				2490, 51.2307133103, -2.0143129528	
2441, 51.545493223, -1.9493233493				2491, 51.24467433, -2.0083690716	
2442, 51.5619831997, -1.9490242373				2492, 51.2165763995, -2.0189383173	
2443, 51.5688118794, -1.9535325295				2493, 51.2193393653, -2.0165741161	
2444, 51.53784239, -1.956085257				2494, 51.2198994488, -2.0185948185	
2445, 51.5581514216, -1.9585172362				2495, 51.2248156116, -2.0178354949	
2446, 51.5285668156, -1.9596063202				2496, 51.23616024, -2.0181454203	
2447, 51.5383078584, -1.9614054013				2497, 51.2234992958, -2.0182098569	
2448, 51.5287890744, -1.9649943839				2498, 51.207276331, -2.0180287515	
2449, 51.5361768938, -1.9651226896				2499, 51.2179937402, -2.0181685351	
				2500, 51.2208313603, -2.0196352693	







Intertek Testing Services  
ETL SEMKO

FCC ID. : M4Y-0835C

Report No.: EME-030138  
Page 41 of 59

**APPENDIX C - E-Field Probe Calibration Data**



# Intertek Testing Services

## ETL SEMKO

FCC ID. : M4Y-0835C



Report No.: EME-030138

Page 42 of 59

**Indexsar Limited**

Oakfield House

Cudworth Lane

**Newdigate**

Surrey RH5 5DR

Tel: +44 (0) 1306 631 233

Fax: +44 (0) 1306 631 834

e-mail: [enquiries@indexsar.com](mailto:enquiries@indexsar.com)

Calibration Certificate  
Dosimetric E-field Probe

Type:	<b>IXP-050</b>
Manufacturer:	<b>IndexSAR, UK</b>
Serial Number:	<b>0114</b>
Place of Calibration:	<b>IndexSAR, UK</b>

IndexSAR Limited hereby declares that the IXP-050 Probe named above has been calibrated for conformity to the IEEE 1528 and CENELEC En 50361 standards on the date shown below.


Date of Initial Calibration:	<b>6<sup>th</sup> September 2002</b>
------------------------------	--------------------------------------

The probe named above will require a calibration check on the date shown below.

Next Calibration Date:	<b>September 2003</b>
------------------------	-----------------------

The calibration was carried out using the methods described in the calibration document. Where applicable, the standards used in the calibration process are traceable to the UK's National Physical Laboratory.

Calibrated By: 

Approved By: 

Please keep this certificate with the calibration document. When the probe is sent for a calibration check, please include the calibration document.



**Intertek Testing Services**  
ETL SEMKO

FCC ID. : M4Y-0835C

Report No.: EME-030138  
Page 43 of 59



**IMMERSIBLE SAR PROBE**

**CALIBRATION REPORT**

**Part Number: IXP – 050**

**S/N 0114**

**6<sup>th</sup> September 2002**



**Indexsar Limited**  
**Oakfield House**  
**Cudworth Lane**  
**Newdigate**  
**Surrey RH5 5DR**

Tel: +44 (0) 1306 631 233

Fax: +44 (0) 1306 631 834

e-mail: [\*\*enquiries@indexsar.com\*\*](mailto:enquiries@indexsar.com)



## INTRODUCTION

This Report presents measured calibration data for a particular Indexsar SAR probe (S/N 0114) and describes the procedures used for characterisation and calibration.

Indexsar probes are characterised using procedures that, where applicable, follow the recommendations of CENELEC [1] and IEEE [2] standards. The procedures incorporate techniques for probe linearisation, isotropy assessment and determination of liquid factors (conversion factors). Calibrations are determined by comparing probe readings with analytical computations in canonical test geometries (waveguides, boxes and spheres) using normalised power inputs.

Each step of the calibration procedure and the equipment used is described in the sections below.

## CALIBRATION PROCEDURE

### 1. Equipment Used

For the first part of the calibration procedure, the probe is placed in a calibration jig as pictured in Figure 1. In this position the probe can be rotated about its axis by a non-metallic belt driven by a stepper motor.

The probe is attached via its amplifier and an optical cable to a PC. A schematic representation of the test geometry is illustrated in Figure 2.

A balanced dipole (900 MHz) is inserted horizontally into the bracket attached to a second belt (Figure 1). The dipole can also be rotated about its axis. A cable connects the dipole to a signal generator, via a directional coupler and power meter. The signal generator feeds an RF amplifier at constant power, the output of which is monitored using the power meter. The probe is positioned so that its sensors line up with the rotation center of the source dipole. By recording output voltage measurements of each channel as both the probe and the dipole are rotated, data are obtained from which the spherical isotropy of the probe can be optimised and its magnitude determined.

The calibration process requires E-field measurements to be taken in air, in 900 MHz simulated brain liquid and at other frequencies/liquids as appropriate. When it is necessary to place the probe in liquid, a rectangular box made from PMMA (200mm internal width, 200mm internal height and 100mm internal depth; wall thickness 4mm) is filled with the appropriate liquid and positioned on the stand so that the probe tip is positioned within the liquid (Figure 1). The box is positioned so that its outer surface is 2mm from the dipole. The procedure follows that described in Ref [2], Section A.5.2.1.

### 2. Linearising probe output

The probe channel output signals are linearised in the manner set out in Refs [1] and [2]. The following equation is utilized for each channel:

$$U_{\text{lin}} = U_{\text{op}} + U_{\text{op}}^2 / \text{DCP} \quad (1)$$



where  $U_{lin}$  is the linearised signal,  $U_{o/p}$  is the raw output signal in voltage units and DCP is the diode compression potential in similar voltage units.

DCP is determined from fitting equation (1) to measurements of  $U_{lin}$  versus source feed power over the full dynamic range of the probe. The DCP is a characteristic of the schottky diodes used as the sensors. For the IXP-050 probes with CW signals the DCP values are typically 0.10V (or 20 in the voltage units used by Indexsar software, which are V\*200).

### 3. Selecting channel sensitivity factors to optimise isotropic response

The basic measurements obtained using the calibration jig (Fig 1) represent the output from each diode sensor as a function of the presentation angle of the source (probe and dipole rotation angles). The directionality of the orthogonally-arranged sensors can be checked by analysing the data using dedicated Indexsar software, which displays the data in 3D format as in Figure 3. The left-hand side of this diagram shows the individual channel outputs after linearisation (see above). The program uses these data to balance the channel outputs and then applies an optimisation process, which makes fine adjustments to the channel factors for optimum isotropic response.

The next stage of the process is to calibrate the Indexsar probe to a W&G EMR300 E-field meter in air. The principal reasons for this are to obtain conversion factors applicable should the probe be used in air and to provide an overall measure of the probe sensitivity.

A multiplier is applied to factors to bring the magnitudes of the average E-field measurements as close as possible to those of the W&G probe.

The following equation is used (where linearised output voltages are in units of V\*200):

$$E_{air}^2 \text{ (V/m)} = \begin{aligned} &U_{linx} * \text{Air Factor}_x \\ &+ U_{liny} * \text{Air Factor}_y \\ &+ U_{linz} * \text{Air Factor}_z \end{aligned} \quad (2)$$

It should be noted that the air factors are not separately used for normal SAR testing. The IXP-050 probes are optimised for use in tissue-simulating liquids and do not behave isotropically in air.

### 4. 900 MHz Liquid Calibration

Conversion factors for use when the probes are immersed in tissue-simulant liquids at 900 MHz are determined either using a waveguide or by comparison to a reference probe that has been calibrated by NPL. Waveguide procedures are described later. The summary sheet indicates the method used for the probe S/N 0114.

The conversion factor, referred to as the 'liquid factor' is also applied to the measurements of each channel. The following equation is used (where output voltages are in units of V\*200):



$$E_{\text{tiq}}^2 \text{ (V/m)} = U_{\text{linx}} * \text{Air Factor}_x * \text{Liq Factor}_x + U_{\text{liny}} * \text{Air Factor}_y * \text{Liq Factor}_y + U_{\text{linz}} * \text{Air Factor}_z * \text{Liq Factor}_z \quad (3)$$

A 3D representation of the spherical isotropy for probe S/N 0114 using these factors is shown in Figure 3.

The rotational isotropy can also be determined from the calibration jig measurements and is reported as the 900MHz isotropy in the summary table. Note that waveguide measurements can also be used to determine rotational isotropy (Fig. 5).

For other frequencies, probe conversion factors are determined using waveguide cells as shown in Figure 4. The cells consist of a coax to waveguide transition and an open-ended section of waveguide containing a dielectric separator. Each waveguide cell stands in the upright position and is filled with liquid within 10 mm of the open end. The separator provides a liquid seal and is designed for a good electrical transition from air filled guide to liquid filled guide. The choice of cell depends on the portion of the frequency band to be examined and the choice of liquid used. The depth of liquid ensures there is negligible radiation from the waveguide open top and that the probe calibration is not influenced by reflections from nearby objects. The return loss at the coaxial connector of the filled waveguide cell is measured initially using a network analyser and this information is used subsequently in the calibration procedure. The probe is positioned in the centre of the waveguide and is adjusted vertically or rotated using stepper motor arrangements. The signal generator is connected to the waveguide cell and the power is monitored with a coupler and a power meter. A fuller description of the waveguide method is given below.

The liquid dielectric parameters used for the probe calibrations are listed in the Tables below. The final calibration factors for the probe are listed in the summary chart.

#### WAVEGUIDE MEASUREMENT PROCEDURE

The calibration method is based on setting up a calculable specific absorption rate (SAR) in a vertically-mounted WG8 (R22) waveguide section [1]. The waveguide has an air-filled, launcher section and a liquid-filled section separated by a matching window that is designed to minimise reflections at the liquid interface. A TE<sub>01</sub> mode is launched into the waveguide by means of a N-type-to-waveguide adapter. The power delivered to the liquid section is calculated from the forward power and reflection coefficient measured at the input to the waveguide. At the centre of the cross-section of the waveguide, the local spot SAR in the liquid as a function of distance from the window is given by functions set out in IEEE1528 as below:

Because of the low cutoff frequency, the field inside the liquid nearly propagates as a TEM wave. The depth of the medium (greater than three penetration depths) ensures that reflections at the upper surface of the liquid are negligible. The power absorbed in the liquid is determined by measuring the waveguide forward and reflected power. Equation (4) shows the relationship between the SAR at the cross-sectional center of the lossy waveguide and the longitudinal distance (z) from the dielectric separator



$$SAR(z) = \frac{4(P_f - P_b)}{\rho ab\delta} e^{-2z/\delta} \quad (4)$$

where the density  $\rho$  is conventionally assumed to be  $1000 \text{ kg/m}^3$ ,  $ab$  is the cross-sectional area of the waveguide,  $P_f$  and  $P_b$  are the forward and reflected power inside the lossless section of the waveguide, respectively. The penetration depth  $\delta$ , which is the reciprocal of the waveguide-mode attenuation coefficient, is determined from a scan along the  $z$ -axis and compared with the theoretical value determined from Equation (5) using the measured dielectric properties of the lossy liquid.

$$\delta = \left[ \text{Re} \left\{ \sqrt{(\pi/a)^2 + j\omega\mu_o(\sigma + j\omega\epsilon_o\epsilon_r)} \right\} \right]^{-1} \quad (5)$$

Table A.1 of [1] can be used for designing calibration waveguides with a return loss greater than 30 dB at the most important frequencies used for personal wireless communications. Values for the penetration depth for these specific fixtures and tissue-simulating mixtures are also listed in Table A.1.

According to [1], this calibration technique provides excellent accuracy, with standard uncertainty less than 3.6% depending on the frequency and medium. The calibration itself is reduced to power measurements traceable to a standard calibration procedure. The practical limitation to the frequency band of 800 to 2500 MHz because of the waveguide size is not severe in the context of compliance testing.

#### **CALIBRATION FACTORS MEASURED FOR PROBE S/N 0114**

The probe was calibrated at 1800, 1900 and 2450MHz MHz in liquid samples representing both brain liquid and body fluid at these frequencies. The calibration was for CW signals only, and the axis of the probe was parallel to the direction of propagation of the incident field i.e. end-on to the incident radiation. The axial isotropy of the probe was measured by rotating the probe about its axis in 10 degree steps through 360 degrees in this orientation.

The reference point for the calibration is in the centre of the probe's cross-section at a distance of 2.5 mm from the probe tip in the direction of the AD converter. A value of 2.5 mm should be used for the tip to sensor offset distance in the software.

It is important that the diode compression point and air factors used in the software are the same as those quoted in the results tables, as these are used to convert the diode output voltages to a SAR value.

#### **DIELECTRIC PROPERTIES OF LIQUIDS**

The dielectric properties of the brain and body tissue-simulant liquids employed for calibration are listed in the tables below. The measurements were performed using an Indexsar DiLine measurement kit, which uses the TEM method as recommended in [2].



## AMBIENT CONDITIONS

Measurements were made in the open laboratory laboratory at  $23 \pm 0.5^{\circ}\text{C}$ . The temperature of the liquids in the waveguide used was measured using a mercury thermometer.

## GSM RESPONSE

SAR probes are required to measure the effective value (RMS value) of the electric field strength. The averaging time is defined in the standards as being over 6 minutes but with most of the signals that occur in the real world, such a long averaging time is unnecessary since the fluctuations are eliminated with significantly shorter averaging times. With most signals, a much shorter averaging time is sufficient. For example the GSM frame rate is 120mS and averaging over this time period will remove the fluctuations.

In diode probes, a single Schottky diode is used as the detector for each of the three channels (X, Y and Z). For small field strengths, these offer a very good approximation to a true RMS rectifier. For higher field strengths, higher or lower values than the RMS value can be displayed - depending on the modulation frequency.

The theoretical maximum deviation from the RMS value can be derived based on the behavior of the two extremes [4]:

An average-value rectifier

- displays a value proportional to the average value of the magnitude of a measured quantity.

A peak-value rectifier

- displays a value proportional to the peak value of the magnitude of a measured quantity

The proportionality factor for a practical probe is chosen so that the probe reads the true RMS value for a continuous (CW) signal.

For pulsed signals, a diode rectifier must deliver a value lying somewhere between the two extremes of an average value rectifier and a peak value rectifier. By way of example, for a GSM signal with a 1 in 8 duty cycle (ratio of 'on' time to total time), the power measurement at higher powers can vary between being a factor of 8 too low (average value extreme) and a factor of 8 too high (peak-value extreme).

The actual behaviour is complex as it depends on the period of the modulation in relation to various time constants in the measuring system. These include the holding time of the diode (typically 50 uS), the time constant of the high-resistance leads and the time constant and integration periods of the measurement electronics. Also, the modulation periods are complex – GSM has a basic burst rate of 4.615mS, but the full modulation scheme only repeats every 120mS.





# Intertek Testing Services

## ETL SEMKO

FCC ID. : M4Y-0835C

Report No.: EME-030138

Page 49 of 59

To correct for the errors due to the diode response to pulsed signals, a multiplier can be added to the second term of Equation 1 (see earlier). In principle, this multiplier can have a range for a GSM signal of between 8 and 1/8. The correction scheme will

$$U_{\text{lin}} = U_{\text{o/p}} + U_{\text{o/p}}^2 * \text{PCF} / \text{DCP} \quad (4)$$

Where PCF is a pulse correction factor ranging between the duty cycle and the reciprocal of the duty cycle.

Indexsar SAR probes show a qualitatively similar behaviour in response to GSM signals, but with a much lesser degree of over or underestimation than indicated by the possible ranges above. Indeed, for many Indexsar probes, the PCF has been established by measurement to be close to unity. A probe with a unity PCF reads true RMS for a pulsed signal without correction.

The PCF has the effect of altering the effective diode compression potential and a modification to the DCP value is how the GSM correction is implemented in the Indexsar probe calibration scheme.

The modified DCP values for GSM are included in the summary page. The value has been determined by finding the modified DCP required to linearise the probe response as indicated in Figure 7.

Non-amplitude modulated carriers can be considered as CW as far as the probe calibration is concerned.

The effects of amplitude modulation of the CDMA signal on SAR measurements has been considered in a draft paper [see ref. 4] submitted to IEEE SCC-34.



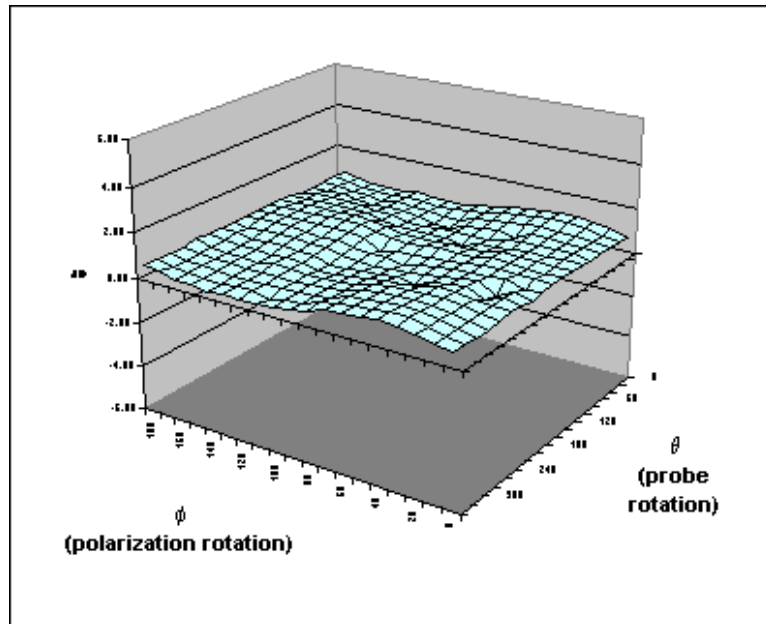
SUMMARY OF CALIBRATION FACTORS FOR PROBE IXP-050 S/N 0114

IXP-050

S/N0114

06/08/2002

Spherical isotropy measured at 900 MHz 0.50 (+/-) dB



	X	Y	Z	
Air factors	532	494	450	(V*200)
DCPs CW	20	20	20	(V*200)
DCPs GSM	7	7	7	(V*200)

f (MHz)	Axial isotropy (+/- dB)		SAR conversion factors (liq/air)		Notes
	BRAIN	BODY	BRAIN	BODY	
900	0.10	<i>0.10</i>	0.340	<i>0.374</i>	3, 1
1800	0.08	0.08	0.381	0.417	
1900	0.09	0.08	0.387	0.417	
2450	0.08	0.08	0.495	0.528	

Notes

- 1) Extrapolated values in italics
- 2) Calibrations done at 22C +/- 2C
- 3) Probe calibration by substitution against NPL-calibrated probe (Probe IXP-050 S/N0071; NPL Cal Rept. No: EF07/2002/03/IndexSAR)
- 4) Waveguide calibration
- 5) Checked using box-phantom validation test

(the graph shows a simple, spreadsheet representation of surface shown in 3D in Figure 3 below)



**PROBE SPECIFICATIONS**

Indexasar probe 0106, along with its calibration, is compared with CENELEC and IEEE standards recommendations (Refs [1] and [2]) in the Tables below. A listing of relevant specifications is contained in the tables below:

Dimensions	S/N 0114	CENELEC [1]	IEEE [2]
Overall length (mm)	350		
Tip length (mm)	10		
Body diameter (mm)	12		
Tip diameter (mm)	5.2	8	8
Distance from probe tip to dipole centers (mm)	3.0		

Dynamic range	S/N 0114	CENELEC [1]	IEEE [2]
Minimum (W/kg)	0.01	<0.02	0.01
Maximum (W/kg)	>35	>100	100
N.B. only measured to 35 W/kg			

Linearity of response	S/N 0114	CENELEC [1]	IEEE [2]
Over range 0.01 – 100 W/kg (+/- dB)	0.125	0.50	0.25

Isotropy (measured at 900MHz)	S/N 0114	CENELEC [1]	IEEE [2]
Axial rotation with probe normal to source (+/- dB) at 900, 1800, 1900 and 2450 MHz	Max. 0.10 (see summary table)	0.5	0.25
Spherical isotropy covering all orientations to source (+/- dB)	0.50	1.0	0.50

Construction	Each probe contains three orthogonal dipole sensors arranged on a triangular prism core, protected against static charges by built-in shielding, and covered at the tip by PEEK cylindrical enclosure material. No adhesives are used in the immersed section. Outer case materials are PEEK and heat-shrink sleeving.
Chemical resistance	Tested to be resistant to glycol and alcohol containing simulant liquids but probes should be removed, cleaned and dried when not in use.



## REFERENCES

[1] CENELEC, EN 50361, July 2001. Basic Standard for the measurement of specific absorption rate related to human exposure to electromagnetic fields from mobile phones.

[2] IEEE 1528, Recommended practice for determining the spatial-peak specific absorption rate (SAR) in the human body due to wireless communications devices: Experimental techniques.

[3] Calibration report on SAR probe IXP-050 S/N 0071 from National Physical Laboratory. Test Report EF07/2002/03/IndexSAR. Dated 20 February 2002.

[4] The response of Indexsar SAR probes to amplitude modulated (pulsed) RF signals, Indexsar Support document IXS211.

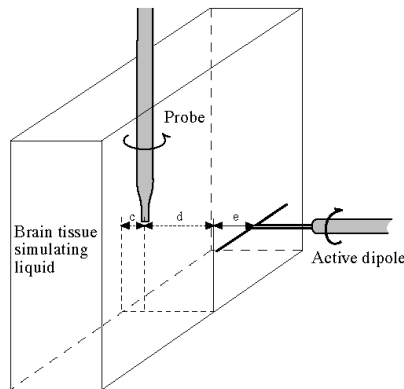
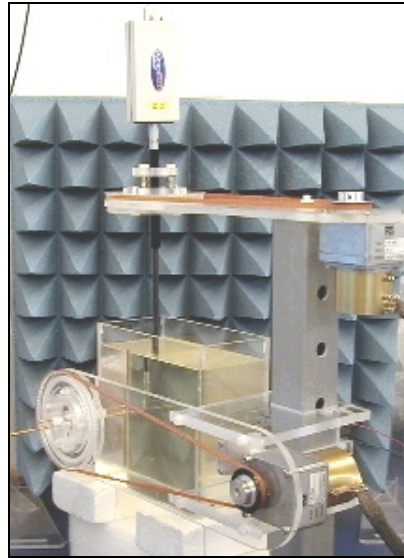


Figure 1. Calibration jig showing probe, dipole and box filled with simulated brain liquid (see Ref [2], Section A.5.2.1)

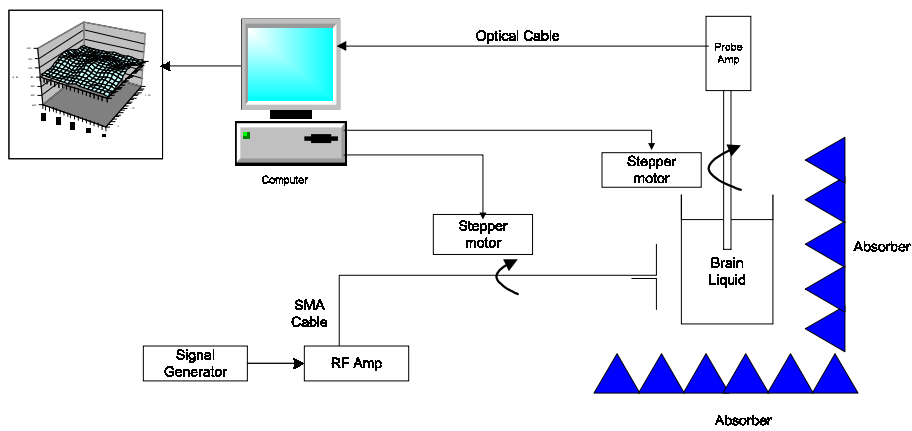


Figure 2. Schematic diagram of the test geometry used for isotropy determination

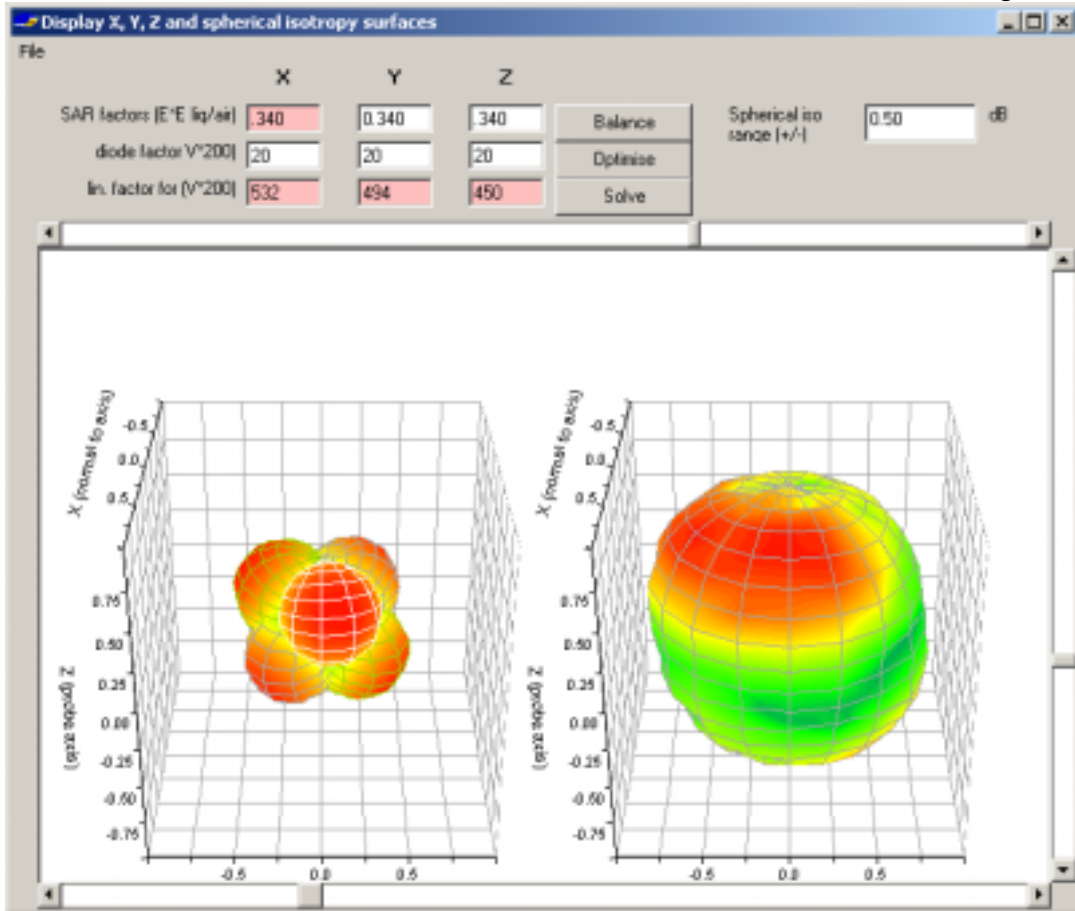


Figure 3. Graphical representation of the probe response to fields applied from each direction. The diagram on the left shows the individual response characteristics of each of the three channels and the diagram on the right shows the resulting probe sensitivity in each direction. The colour range in the figure images the lowest values as blue and the maximum values as red. For the probe S/N 0114, this range is (+/-) 0.50 dB. The probe is more sensitive to fields parallel to the axis and less sensitive to fields normal to the probe axis.

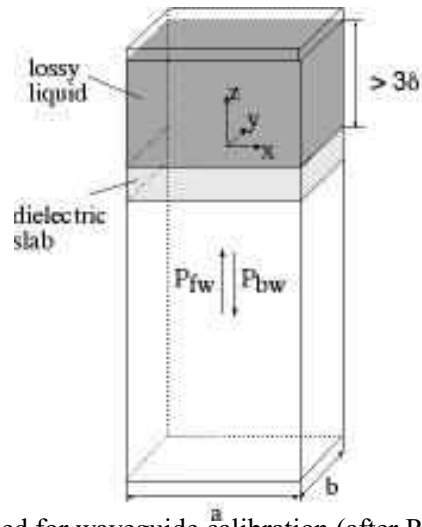


Figure 4. Geometry used for waveguide calibration (after Ref [2], Section A.3.2.2)

IXP-050 S/N 0114

08-Aug-02

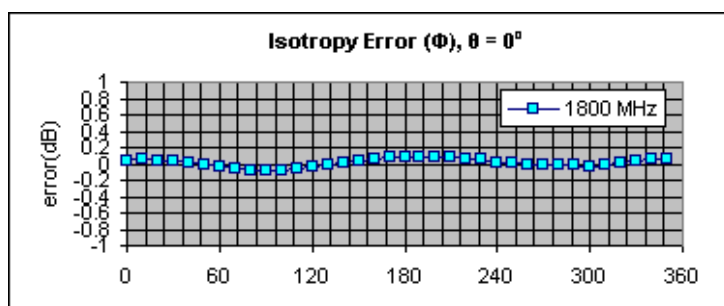
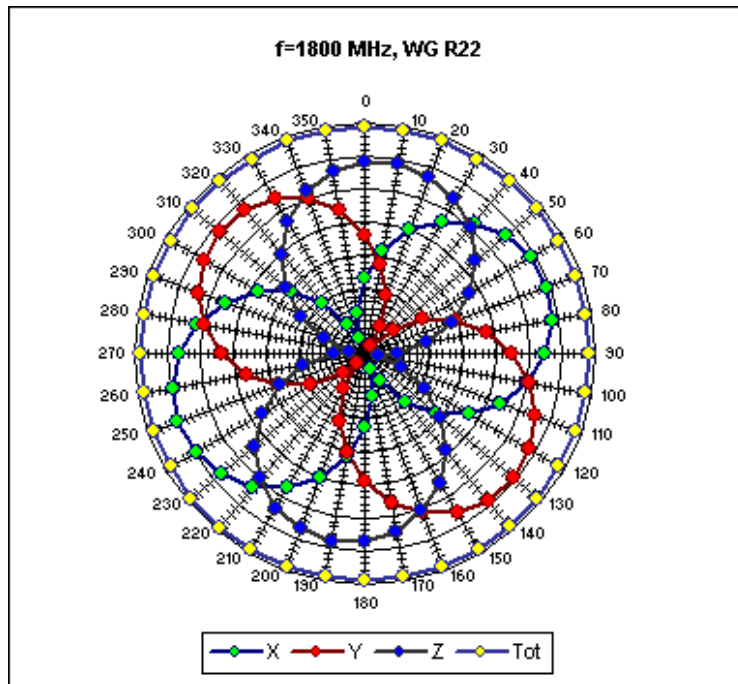
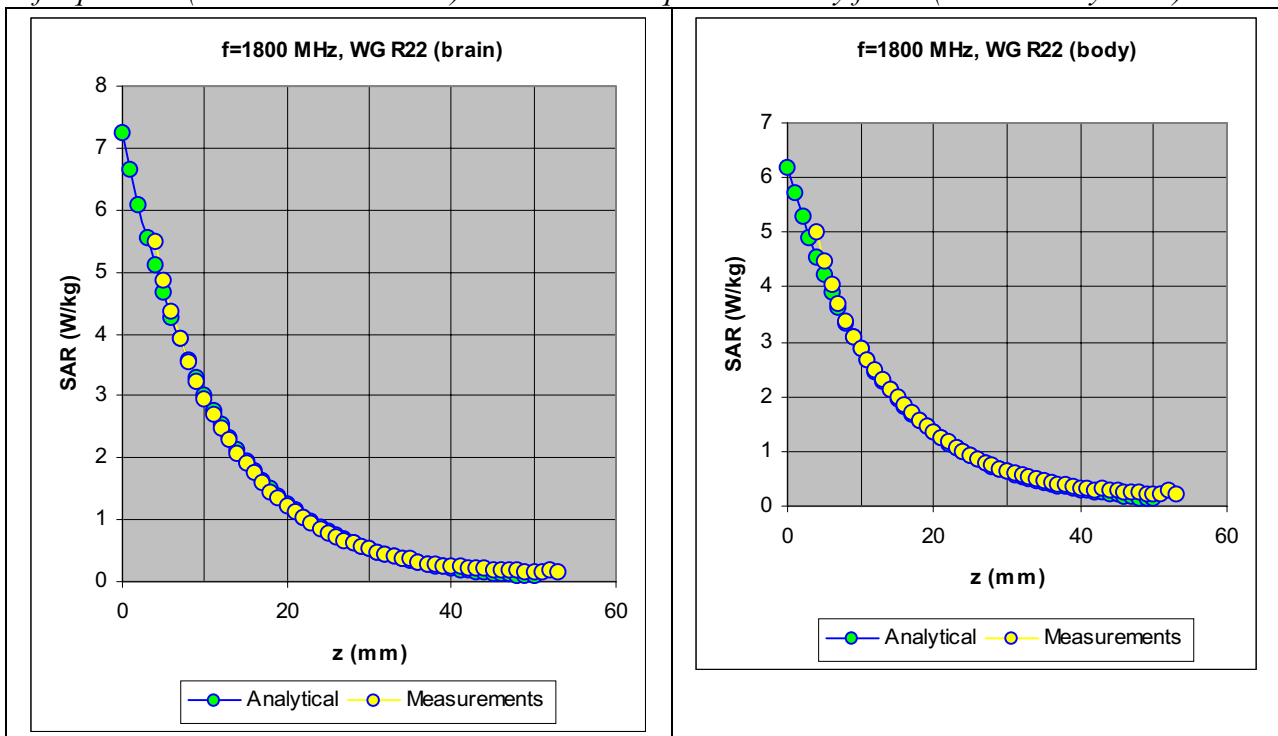




Figure 5. Example of the rotational isotropy of probe S/N 0114 obtained by rotating the probe in a liquid-filled waveguide at 1800 MHz. Similar distributions are obtained at the other test frequencies (1900 and 2450 MHz) both in brain liquids and body fluids (see summary table)





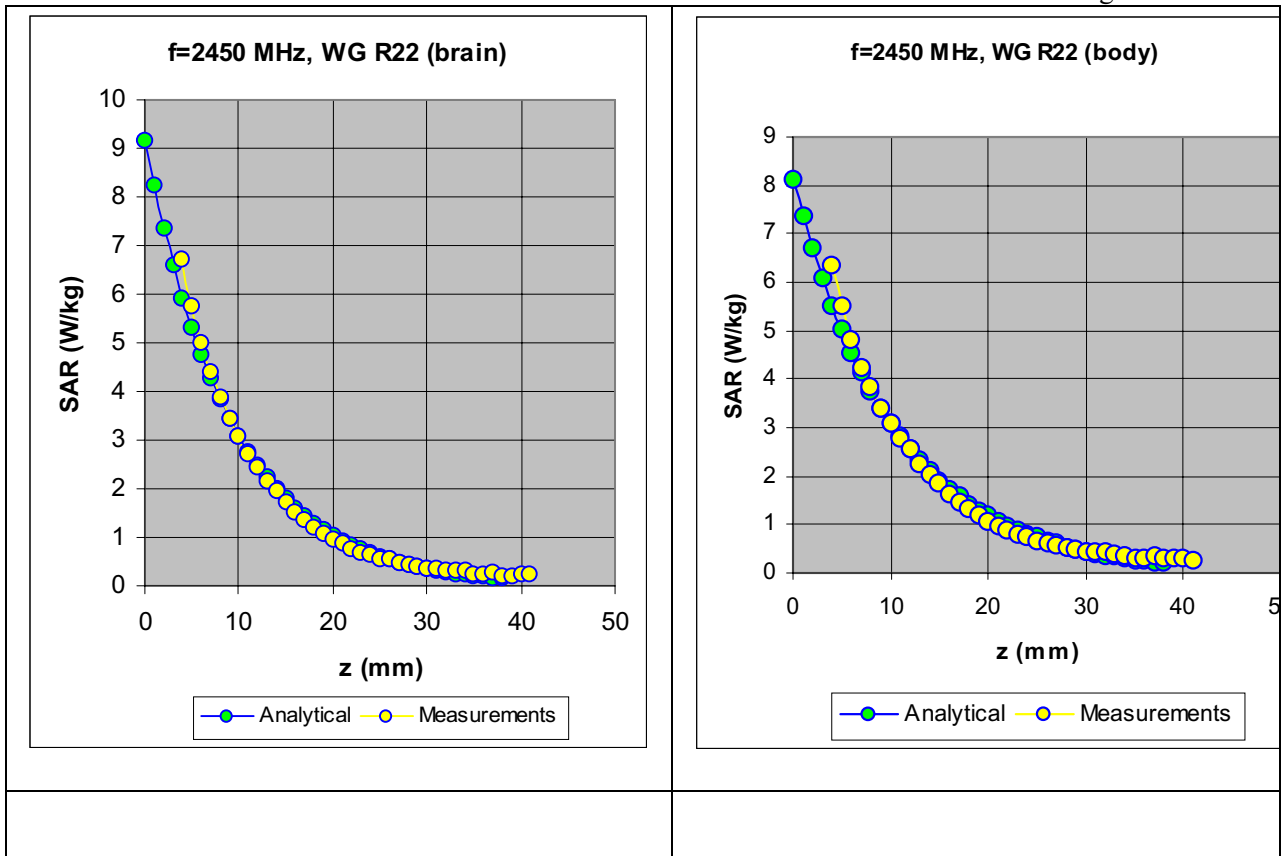


Figure 6. The measured SAR decay function along the centreline of the R22 waveguide with conversion factors adjusted to fit to the theoretical function for the particular

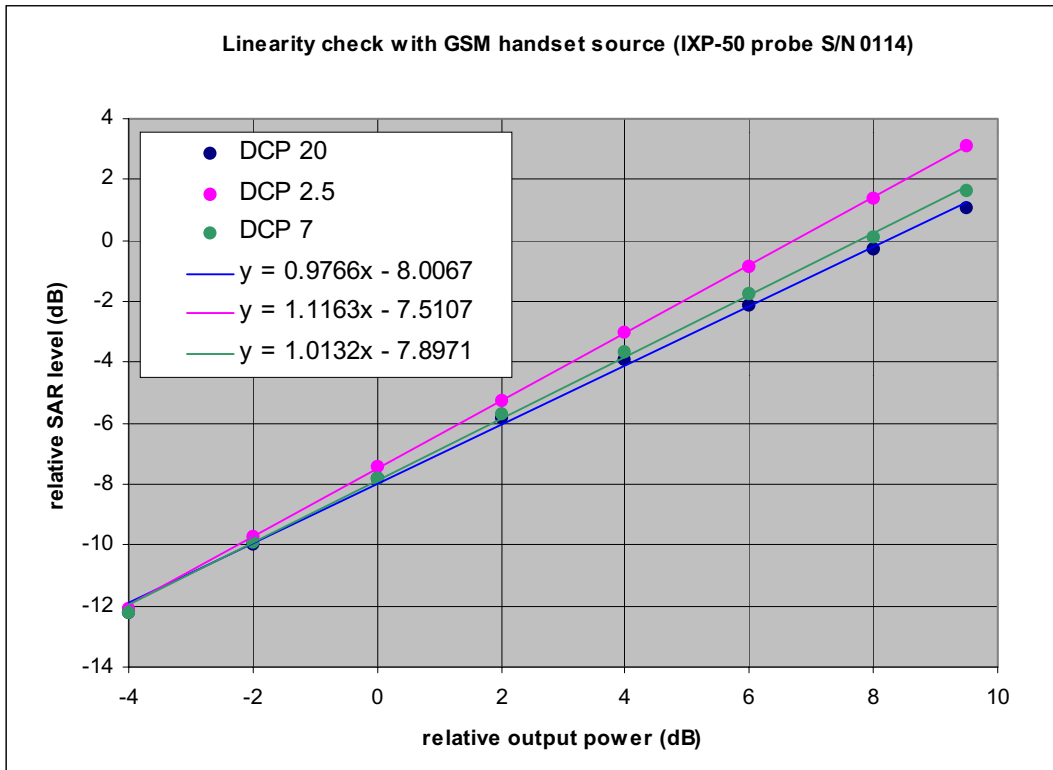


Figure 7. The GSM response of IXP-050 probe S/N 0114 at 1800MHz (max. SAR level 1.6 W/kg)

**Table indicating the dielectric parameters of the liquids used for calibrations at each frequency**

<b>Liquid used</b>	<b>Relative permittivity (measured)</b>	<b>Conductivity (S/m) (measured)</b>
835 MHz BRAIN	42.85	0.90
900 MHz BRAIN	42.43	1.01
1800 MHz BRAIN	39.09	1.37
1800 MHz BODY	52.53	1.49
1900 MHz BRAIN	38.6	1.48
1900 MHz BODY	52.21	1.60
2450 MHz BRAIN	38.13	1.82
2450 MHz BODY	55.28	1.92



# Intertek Testing Services

## ETL SEMKO

FCC ID. : M4Y-0835C



Report No.: EME-030138

Page 59 of 59

**Indexsar Limited**

Oakfield House

Cudworth Lane

**Newdigate**

Surrey RH5 5DR

**Tel: +44 (0) 1306 631 233**

**Fax: +44 (0) 1306 631 834**

**e-mail: [enquiries@indexsar.com](mailto:enquiries@indexsar.com)**

Calibration / Conformance statement

Balanced Validation dipole

Type:	IXD-245 2450MHz
Manufacturer:	IndexSAR, UK
Serial Number:	0041
Place of Calibration:	IndexSAR, UK


IndexSAR Limited hereby declares that the IXD series dipole named above has been checked for conformity to the specifications given in the draft IEEE 1528 and CENELEC En 50361 standards on the date shown below.

Date of Calibration/Check:	11 <sup>th</sup> November 2002
----------------------------	--------------------------------

The dipole named above should be periodically re-checked using the procedures set out in the dipole calibration document. It is important that the cautions regarding handling of the dipoles (given in the calibration document) are adhered to.

Next Calibration Date:	November 2004
------------------------	---------------

The calibration measurements were carried out using the methods described in the calibration document. Where applicable, the standards used in the calibration process are traceable to the UK's National Physical Laboratory.

Calibrated By: 

Approved By: 