

Intertek Testing Services

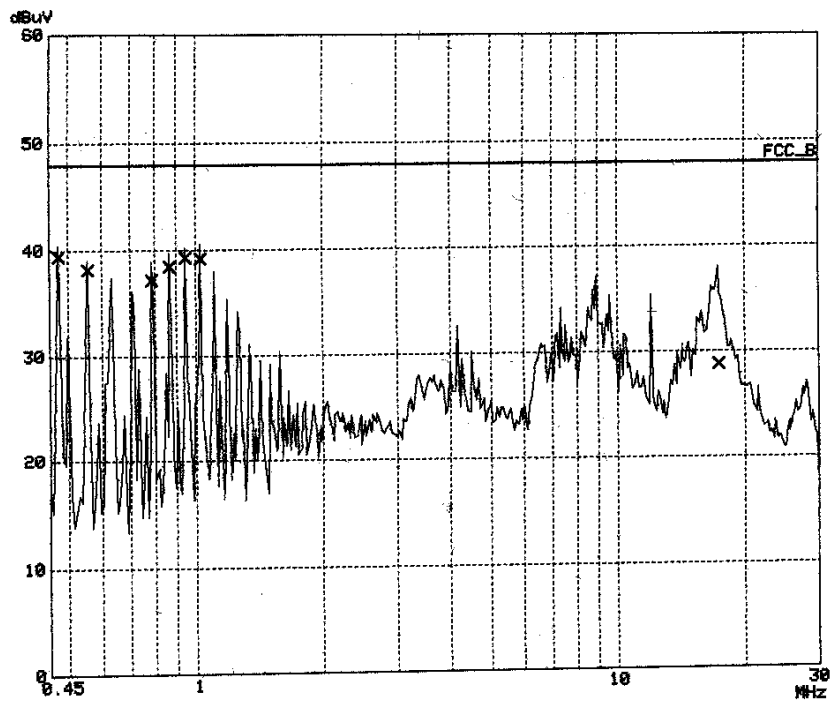
RF VOLTAGE

EUT: XI-626
Manuf: Z-Com
Op Cond: AMN-L
Operator: elton
Test Spec: FCC 15 CLASS B
Comment: SN:825788/015
120V 60HZ 22C 60%R.H tx at low channel
Date: 25. Dec 01 12:01

Scan Settings (1 Range)

Frequencies			Receiver Settings				
Start	Stop	Step	IF BW	Detector	M-Time	Atten	Preamp
450k	30M	8k	9k	PK	20ms	AUTO	LN OFF

Final Measurement: x QP
Meas Time: 1 s



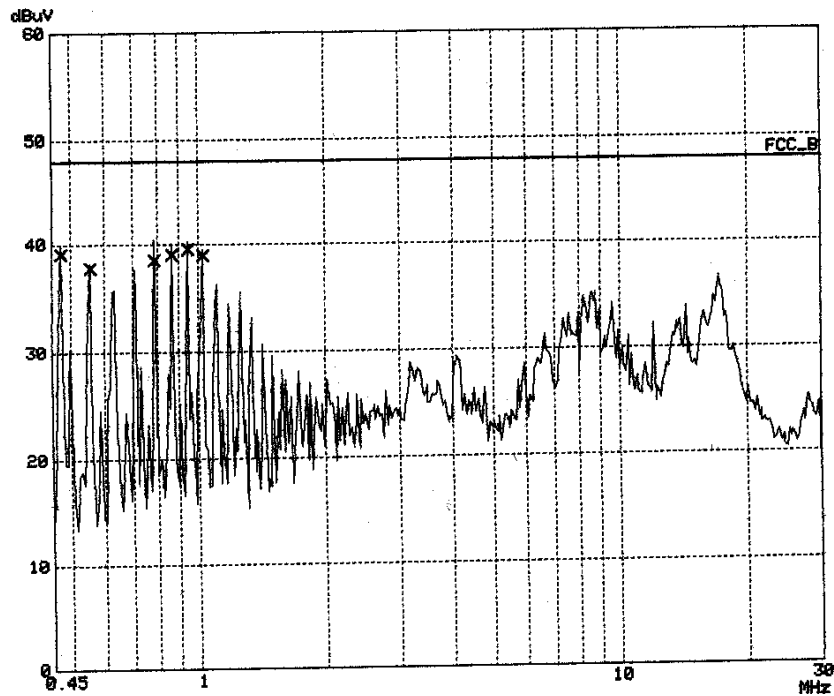
Intertek Testing Services
RF VOLTAGE

EUT: XI-626
Manuf: Z-Com
Op Cond: AMN-N
Operator: elton
Test Spec: FCC 15 CLASS B
Comment: SN:825788/015
120V 60HZ 22C 60%R.H tx at low channel
Date: 25. Dec 01 11:55

Scan Settings (1 Range)

Frequencies			Receiver Settings				
Start	Stop	Step	IF BW	Detector	M-Time	Atten	Preamp
450k	30M	8k	9k	PK	20ms	AUTO	LN OFF

Final Measurement: x QP
Meas Time: 1 s



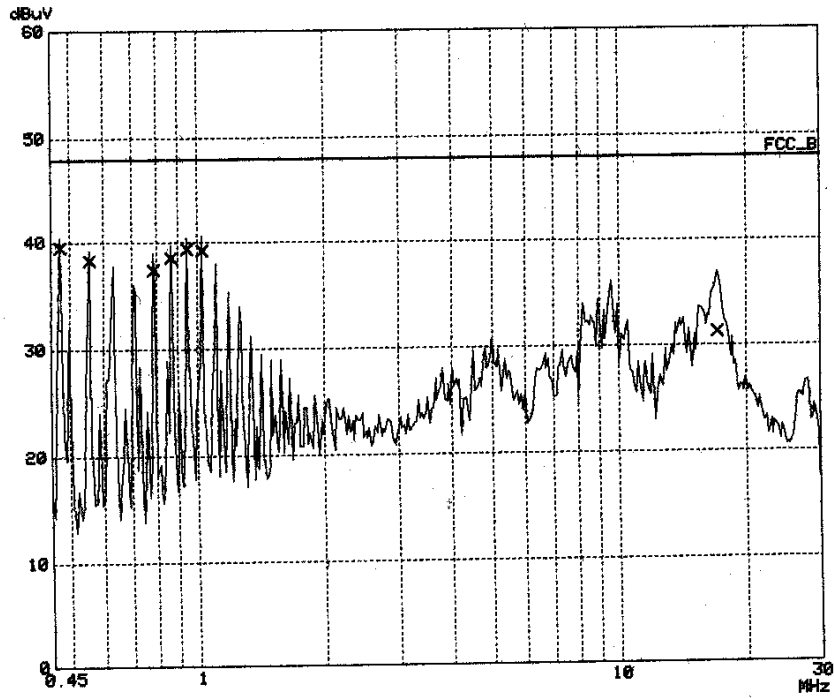
Intertek Testing Services
RF VOLTAGE

EUT: XI-626
Manuf: Z-Com
Op Cond: AMN-L
Operator: eiton
Test Spec: FCC 15 CLASS B
Comment: SN:825788/015
120V 60HZ 22C 60%R.H tx at middle channel
Date: 25. Dec 01 12:07

Scan Settings (1 Range)

Frequencies			Receiver Settings				
Start	Stop	Step	IF BW	Detector	M-Time	Atten	Preamp
450k	30M	8k	9k	PK	20ms	AUTO	LN OFF

Final Measurement: x QP
Meas Time: 1 s



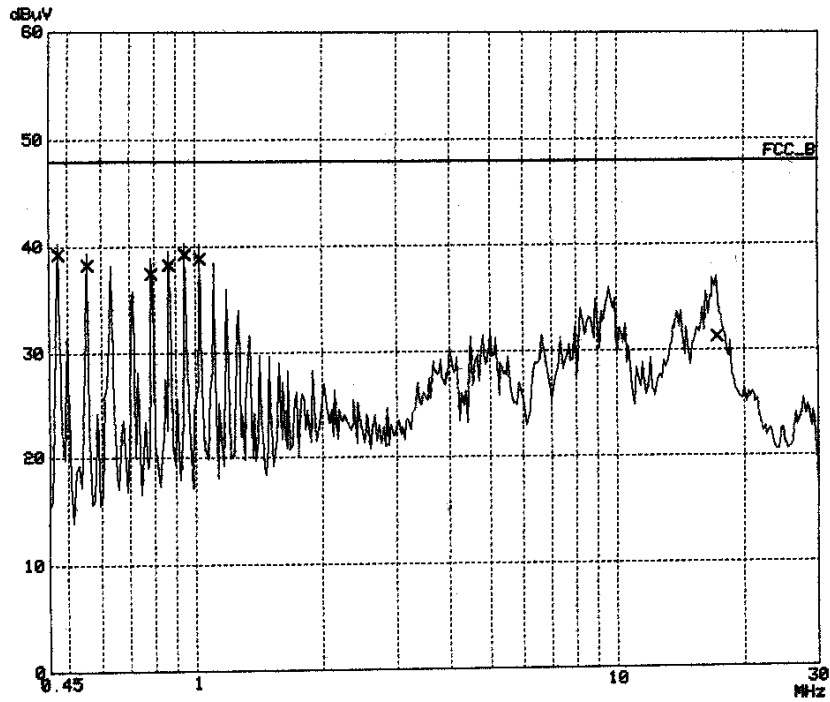
Intertek Testing Services
RF VOLTAGE

EUT: XI-626
Manuf: Z-Com
Op Cond: AMN-N
Operator: elton
Test Spec: FCC 15 CLASS B
Comment: SN:825788/015
120V 60HZ 22C 60%R.H tx at middle channel
Date: 25. Dec 01 12:13

Scan Settings (1 Range)

Frequencies			Receiver Settings				
Start	Stop	Step	IF BW	Detector	M-Time	Atten	Preamp
450k	30M	8k	9k	PK	20ms	AUTO	LN OFF

Final Measurement: x QP
Meas Time: 1 s



Intertek Testing Services

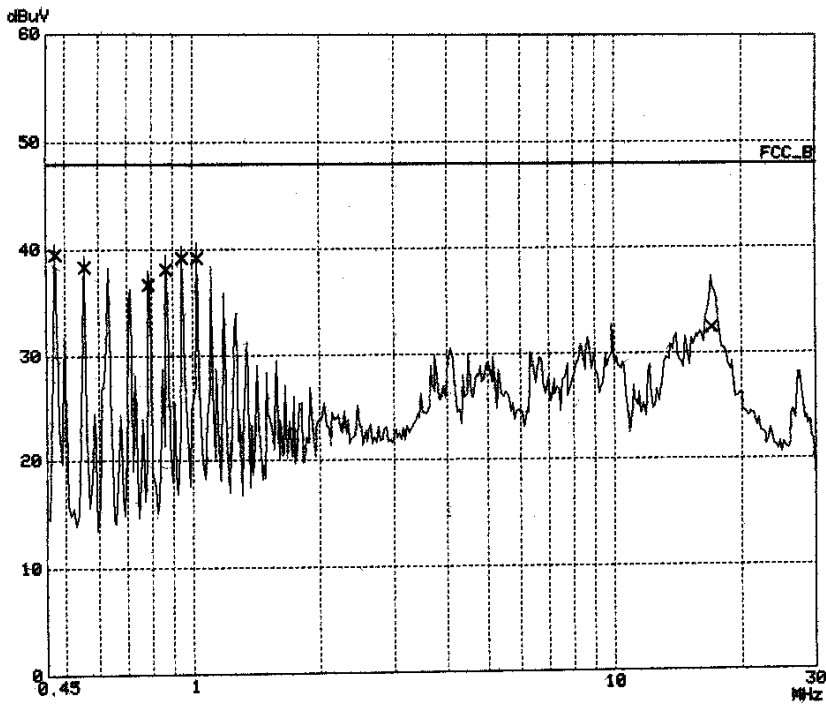
RF VOLTAGE

EUT: XI-626
Manuf: Z-Com
Op Cond: AMN-L
Operator: elton
Test Spec: FCC 15 CLASS B
Comment: SN:825788/015
120V 60HZ 22C 60%R.H tx at high channel
Date: 25. Dec 01 12:25

Scan Settings (1 Range)

Frequencies			Receiver Settings				
Start	Stop	Step	IF BW	Detector	M-Time	Atten	Preamp
450k	30M	8k	9k	PK	20ms	AUTO	LN OFF

Final Measurement: x QP
Meas Time: 1 s



Intertek Testing Services
RF VOLTAGE

EUT: XI-626
Manuf: Z-Com
Op Cond: AMN-N
Operator: elton
Test Spec: FCC 15 CLASS B
Comment: SN:825788/015
120V 60HZ 22C 60%R.H tx at high channel
Date: 25. Dec 01 12:19

Scan Settings (1 Range)

Frequencies			Receiver Settings				
Start	Stop	Step	IF BW	Detector	M-Time	Atten	Preamp
450k	30M	8k	9k	PK	20ms	AUTO	LN OFF

Final Measurement: x QP
Meas Time: 1 s

