

# 11Mbps MiniPCI Wireless Adapter

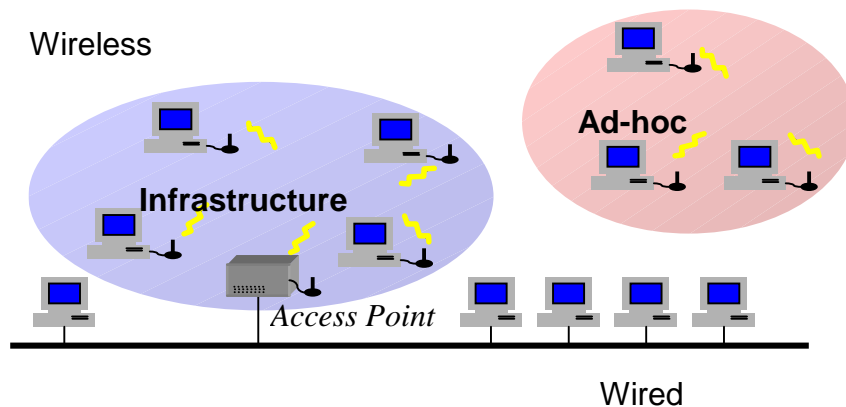
## Quick Installation Guide

Version 1.0.0

### I. Network Configuration

The 11Mbps MiniPCI Wireless Adapter is an IEEE802.11/802.11b-compliant PCI Type DSSS wireless LAN adapter. It fully supports wireless networking under Windows XP/2000/98/ME.

- The 11Mbps MiniPCI Wireless Adapter can be operated in Infrastructure and Ad-Hoc network configurations. *Infrastructure mode* allows 11Mbps MiniPCI Wireless Adapter users to join an Extended Basic Service Set (i.e., connect to access point). *Ad-Hoc mode* allows 11Mbps MiniPCI Wireless Adapter users to join a Basic Service Set (i.e., peer-to-peer mode, without access point).



### II. Package Content

The 11Mbps MiniPCI Wireless Adapter x 1

Quick Installation Guide x 1

Product CD-ROM or Floppy Diskette x 1

### III. Installation of the 11Mbps MiniPCI Wireless Adapter under Windows XP

1. Insert the 11Mbps MiniPCI Wireless Adapter into the MiniPCI slot in your notebook and start Windows. Windows will auto-detect the MiniPCI Wireless Adapter and a “**Found New Hardware Wizard**” window will show up.
2. Select “**Install from a list or specific (Advanced)**” and insert the Product CD-ROM or floppy disk into the appropriate drive. Specify the location where the driver is placed. Click on **Next** to install the driver.
3. The windows will find “**MiniPCI Wireless Adapter**”. Click on **Next** to continue.
4. Click **Finish** to complete the installation.

### **Installation of the 11Mbps MiniPCI Wireless Adapter under Windows 2000**

1. Insert the 11Mbps MiniPCI Wireless Adapter into the MiniPCI slot in your notebook and start Windows. Windows will auto-detect the MiniPCI Wireless Adapter and a “**Found New Hardware Wizard**” window will show up. Click **Next** to proceed.
2. Select “**Search for a suitable driver for my device (recommended)**”. Insert the Product CD-ROM or floppy disk into the appropriate drive. Specify the location where the driver is placed. Click on **Next** to install the driver.
3. The windows will find “**MiniPCI Wireless Adapter**”. Click on **Next** to continue.
4. Click **Finish** to complete the installation.

### **Installaton of the 11Mbps MiniPCI Wireless Adapter under Windows 98/ME**

1. Insert the 11Mbps MiniPCI Wireless Adapter into the MiniPCI slot in your notebook and start Windows. Windows will auto-detect new hardware and will display a “**Add New Hardware Wizard**” window.
2. Select “**Search for a best driver for your device (recommended)**”. Insert the Product CD-ROM or floppy disk into the appropriate drive. Specify the location where the driver is placed. Click on **Next** to install the driver.
3. The Windows will find “**MiniPCI Wireless Adapter**”. Click on **Next** to continue.
4. Once the [Please insert the disk labeled “Windows 98/ME CD-ROM”, and then click **OK**] window appears, enter the path corresponding to the appropriate drives and click **OK**.
5. Click **Finish** to complete the installation. Restart Windows.

### **IV. Installation of the Wireless LAN Utility**

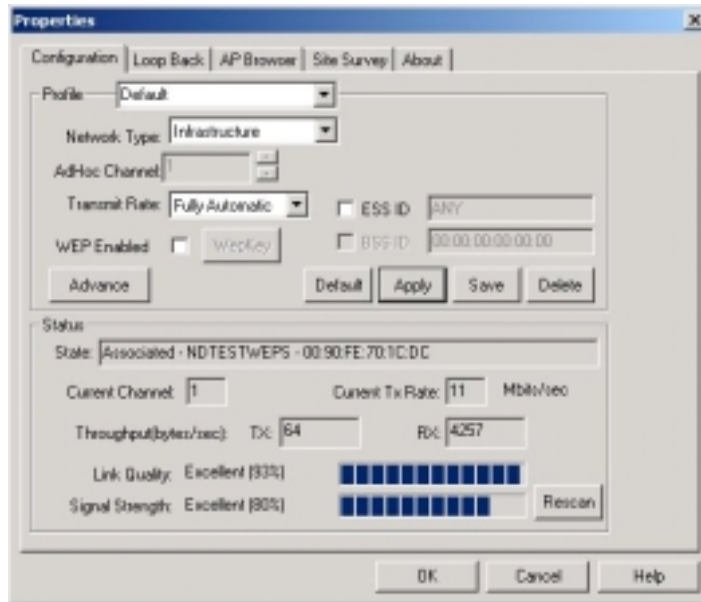
1. Insert the Product CD-ROM or floppy disk again.
2. Go the **utility** folder and run **setup.exe**.
3. Follow the on-screen instructions to install the Wireless LAN Utility.
4. Upon completion, go to **Program Files** and run the Wireless LAN Utility. The utility interface will then appear and at the same time its icon appears in the **System Tray** in the bottom right corner of your task bar.

### **V. Usage of the Wireless LAN Utility**

The Wireless LAN Utility consists of window with 5 items for you to monitor and configure the 11Mbps MiniPCI Wireless Adapter: **Configuration, Loop Back, AP Browser, Site Survey** and **About**.

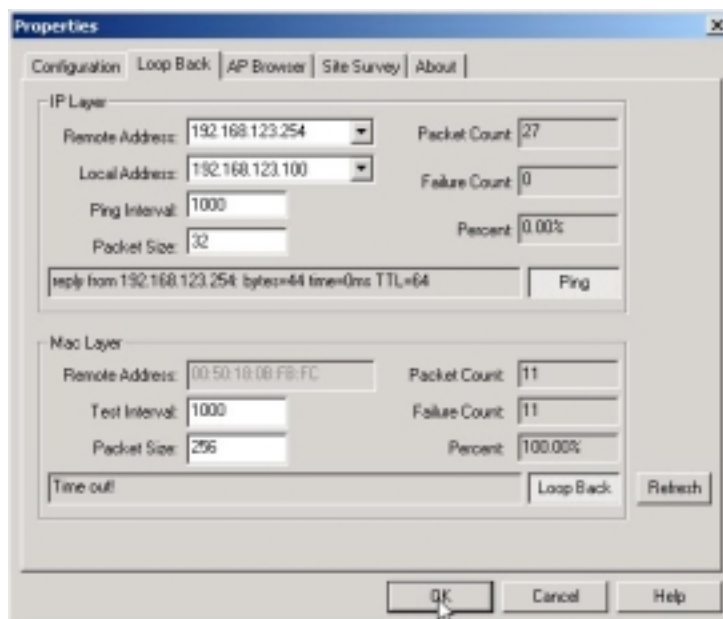
### Configuration:

The **Configuration** item allows you to modify the configuration parameters for the 11Mbps MiniPCI Wireless Adapter such as **Profile**, **Network Type**, **Channel**, **Transmit Rate**, **ESSID**, **WEP**, **RTS/CTS**, **Fragment Threshold**, and **Power Save** mode. Furthermore, you may monitor the current status of the MiniPCI Wireless Adapter such as **State**, **Current Channel**, **Current Tx Rate**, **Throughput**, **Link Quality** and **Signal Strength**.



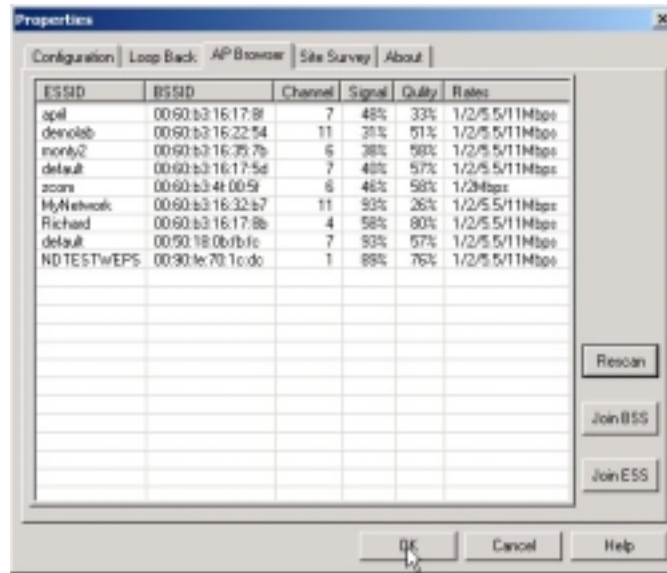
### Look Back:

The **Look Back** tool helps you examine point-to-point data transmission quality between the your MiniPCI Wireless Adapter and any work station on the network. By entering IP address of the remote station, set ping interval and packet size, you may know whether communication has been made successfully or not. Additionally, if you use the infrastructure wireless LAN configuration, you may run the loopback test by click the **Look back** button to verify the communication quality between your wireless station and Access Point.



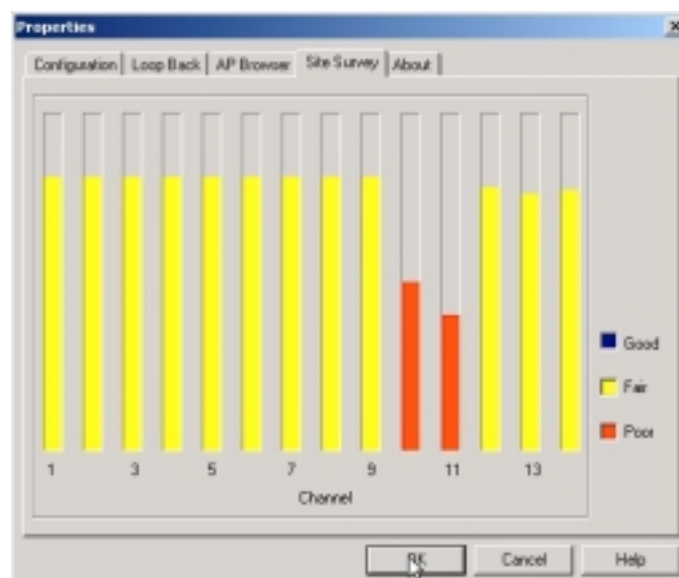
### AP Browser:

By clicking the Rescan button, the AP Browser can display all the Access Points around working environment. Besides showing the ESSID of each Access Point, it also display BSSID, Channel, Signal, Quality and Supported Rates. To join any of the displayed Access Point, highlight the Access Point you desire to connect and then click the **Join BSS** or **Join ESS** to join the group.



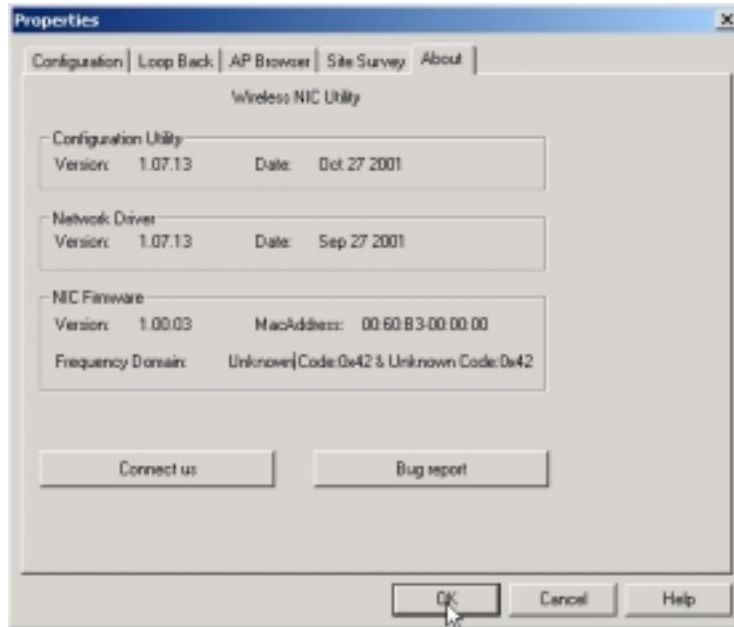
### Site Survey:

When the **Site Survey** screen is displayed, the channel quality of all 14 radio channels will be displayed. These channel quality measurements are shown on each gauge for the 14 radio channels. The blue bar indicated the channel quality is clear and good. The **higher** the blue bar is, the **better** quality you have (i.e., less interference). The yellow bar indicates the channel quality is fair and the red bar indicates the channel is busy or having severe interference.



**About:**

The **About** item shows the versions the Wireless LAN Utility, driver, firmware and utility of the 11Mbps MiniPCI Wireless Adapter. Also, the MAC address and frequency domain is displayed.



**Technical Support**

You can find the most recent software and user documentation will be updated periodically on the supplier Web site. If you have difficulty resolving the problem while installing or using the 11Mbps MiniPCI Wireless Adapter, please contact the supplier for support.

## **Statements Need to be Shown on End Product**

Since this module is installed inside the end product, the end product should be affixed a label on visible area showing that this product contains a RF module, and also its FCC ID.

## **FCC Information**

To assure continued compliance, (example – use only shielded interface cables when connecting to computer or peripheral devices). Any changes or modifications not expressly approved by the party responsible for compliance could void the user's authority to operate this equipment.

This Equipment has been tested and found to comply with the limits for a Class B digital device, pursuant to Part 15 of the FCC rules. These limits are designed to provide reasonable protection against

harmful interference in a residential installation. This equipment generates, uses and can radiate radio

frequency energy and, if not installed and used in accordance with the instructions, may cause harmful

interference to radio communications. However, there is no guarantee that interference will not occur in

a particular installation. If this equipment does cause harmful interference to radio or television reception, which can be determined by turning the equipment off and on, the user is encouraged to try to

correct the interference by one or more of the following measures:

- Reorient or relocate the receiving antenna.
- Increase the separation between the equipment and receiver.
- Connect the equipment into an outlet on a circuit different from that to which the receiver is connected.
- Consult the dealer or an experienced radio/TV technician for help.

The device complies with Part 15 of the FCC rules. Operation is subject to the following two conditions:

- (1) This device may not cause harmful interference, and
- (2) this device must accept any interference received, including interference that may cause undesired operation.

**FCC RF Radiation Exposure Statement:**

This equipment complies with FCC RF radiation exposure limits set forth for an uncontrolled environment. This equipment should be installed and operated with a minimum distance of 20 centimeters between the radiator and your body.

This transmitter must not be co-located or operating in conjunction with any other antenna or transmitter.

## Limited Warranty Statement

This Warranty constitutes the sole and exclusive remedy of any buyer or reseller's equipment and the sole and exclusive liability of the supplier in connection with the products and is in lieu of all other warranties, express, implied or statutory, including, but not limited to, any implied warranty of merchantability of fitness for a particular use and all other obligations or liabilities of the supplier.

In no event will the supplier or any other party or person be liable to you or anyone else for any damages, including lost profits, lost savings or other incidental or consequential damages, or inability to use the software provided on the software media even if the supplier or the other party person has been advised of the possibility of such damages.

The following are special terms applicable to your hardware warranty as well as services you may use during part of the warranty period. Your formal Warranty Statement, including the warranty applicable to our Wireless LAN products, appears in the Quick Installation Guide which accompanies your products.

**Duration of Hardware Warranty:** One Year

**Replacement, Repair or Refund Procedure for Hardware:**

If your unit needs a repair or replacement, return it to your dealer/distributor in its original packaging. When returning a defective product for Warranty, always include the following documents:

- The Warranty Repair Card
- A copy of the invoice/proof of purchase, and
- The RMA Report Form (To receive a Return Materials Authorization form (RMA), please contact the party from whom you purchased the product).

Upon proof-of-purchase we shall, at its option, repair or replace the defective item at no cost to the buyer.

This warranty is contingent upon proper use in the application for which the products are intended and does not cover products which have been modified without the reseller's approval or which have been subjected to unusual physical or electrical demands or damaged in any way.

Please complete the information below and include it along with your products.

Name:	
Title:	
Company:	
Telephone:	
Fax:	
Email:	
City/State/Zipcode:	
Country:	
Product Name:	
Serial Number:	
MAC Address:	
Invoice Date:	
Product Description:	

If you have any further questions, please contact your local authorized reseller for support.