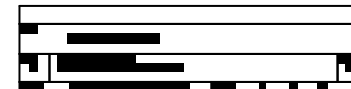


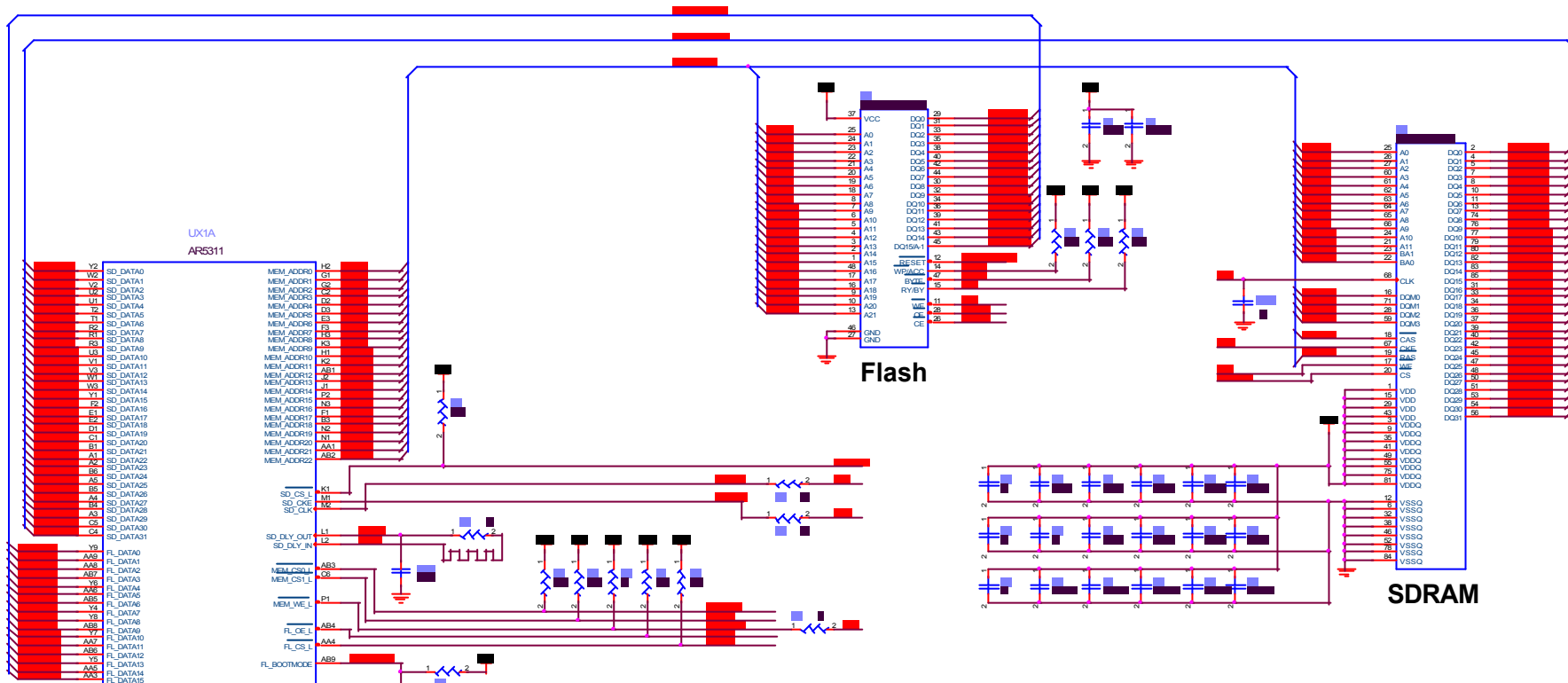
DATE	REVISION NUMBER	INITIALS	DESCRIPTION
3/28/02	245-01080-030	EA	Initial external release.
4/15/02	245-01080-031	VN	RF TRIM
4/17/02	245-01080-040	VN	Add 0.5 pF Caps around Ethernet ports.
4/18/02	245-01080-041	EA	Corrected part numbers for D3,F5,Q3,U1,U3; updated R3 to 1%. Updated Title block titles.
5/15/02	245-01080-042	EA	Added clarification notes, NC'd AR5311 EE pins, changed XG1 to 25MHz
7/3/02	245-01080-050	VN	Added C349, 22 pF, 0402 at DLY_0. Added C350, C, 0402 at U8 pin 68.
8/1/02	XV-5850 VER 0.4		Moved voltage input circuit.(page8 to page10) Added switching power circuit and XI-1250 wireless LED (DS9) at page 10. Added JP3 part and R171 at page 9. Added DS6-1 0805 LED at page 9. Updated R113,R137 2.0K,1% to 2K,5% Updated R59,R111-112,R114-116,R147,R157-160 5.11K,1% to 5.1K,5% Updated R106,R117,R129,R132,R161 365,1% to 330,5% Changed DS4 part and delete DS5 at page 7.

DNS : Do Not Serial

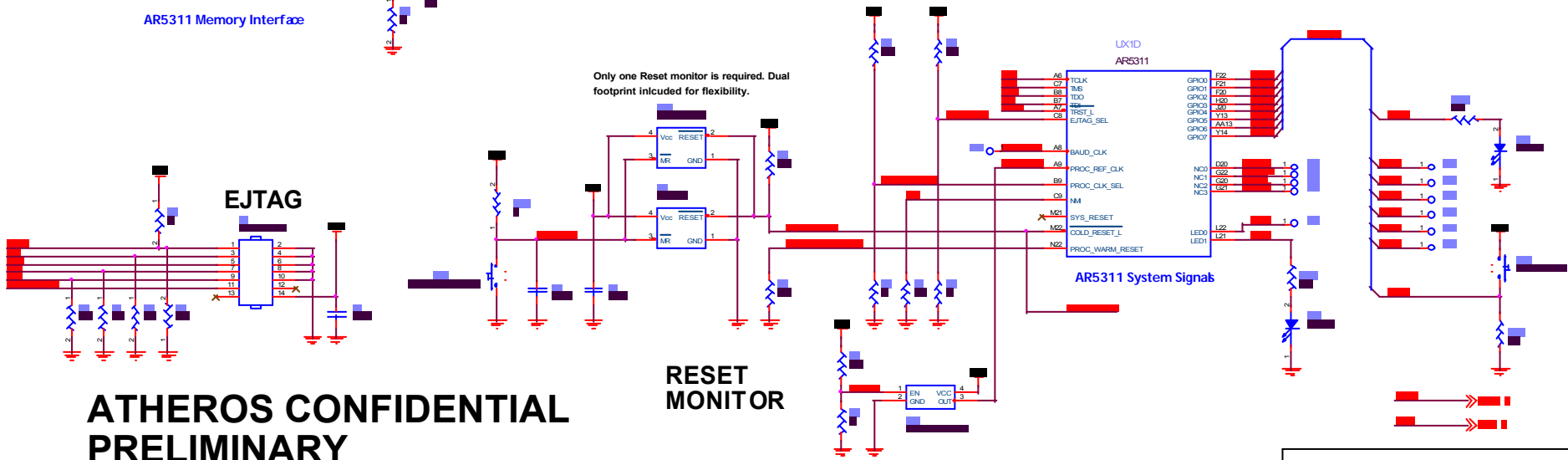
## AR5001AP - AR5311 BASED 802.11a ACCESS POINT

ATHEROS CONFIDENTIAL  
PRELIMINARY





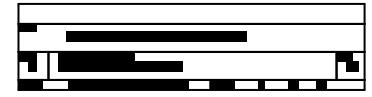
AR5311 Memory Interface

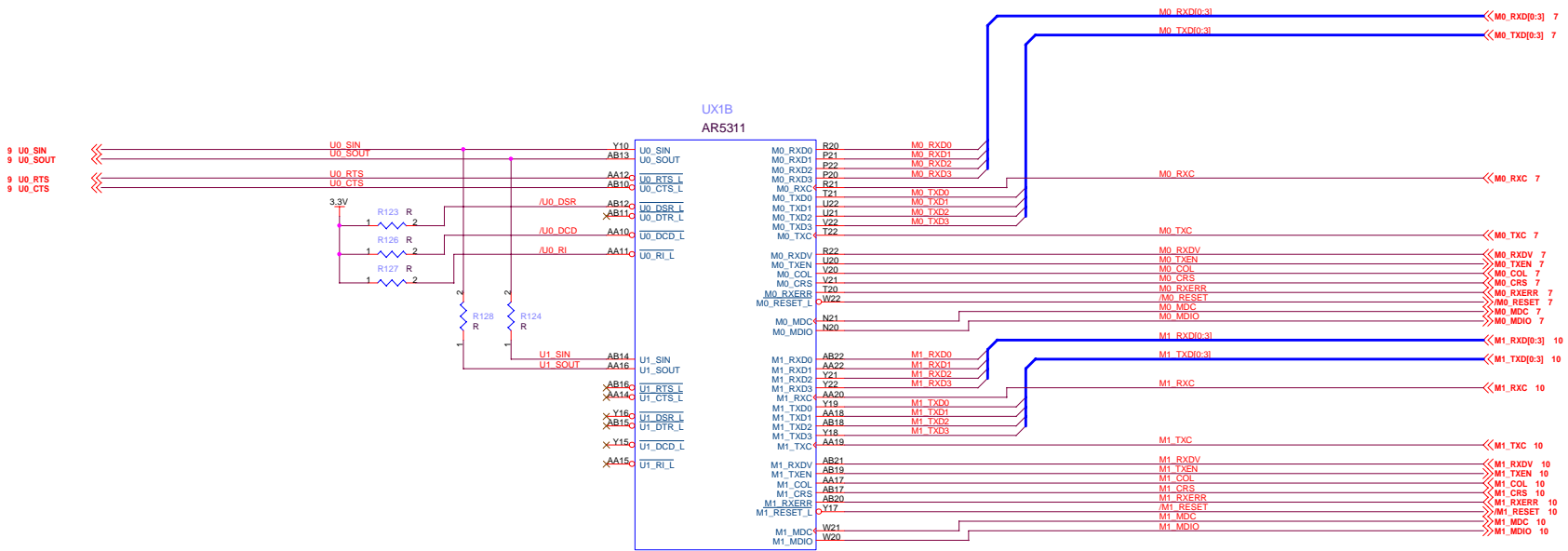


RESET MONITOR

AR5311 System Signals

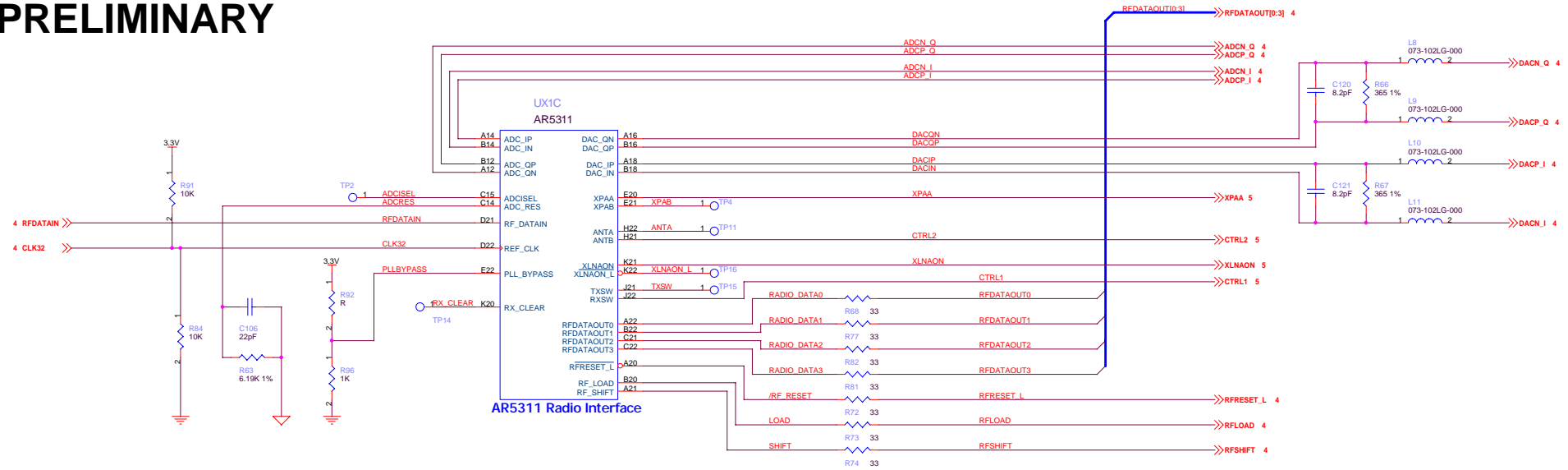
**ATHEROS CONFIDENTIAL  
PRELIMINARY**





5311 MII and Serial Interfaces

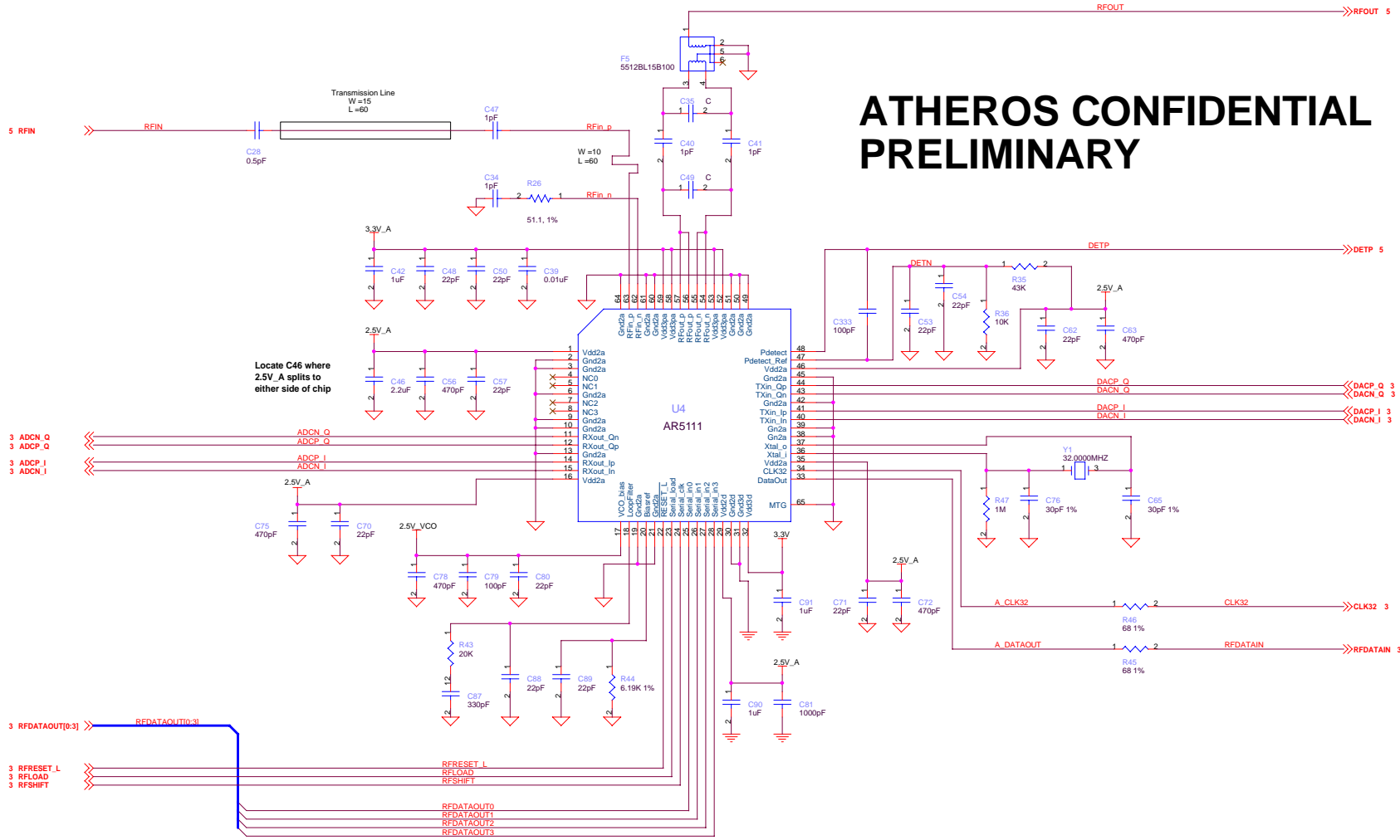
**ATHEROS CONFIDENTIAL  
PRELIMINARY**



AR5311 Radio Interface

File		
AR5001AP - AR5311 MII and AR5111 Interface		
Size	Document Number	Rev
C	D:\SG\XV\5850X\5850 v04.dsn	0.4
Date:	Monday, September 02, 2002	Sheet 3 of 10


# ATHEROS CONFIDENTIAL PRELIMINARY



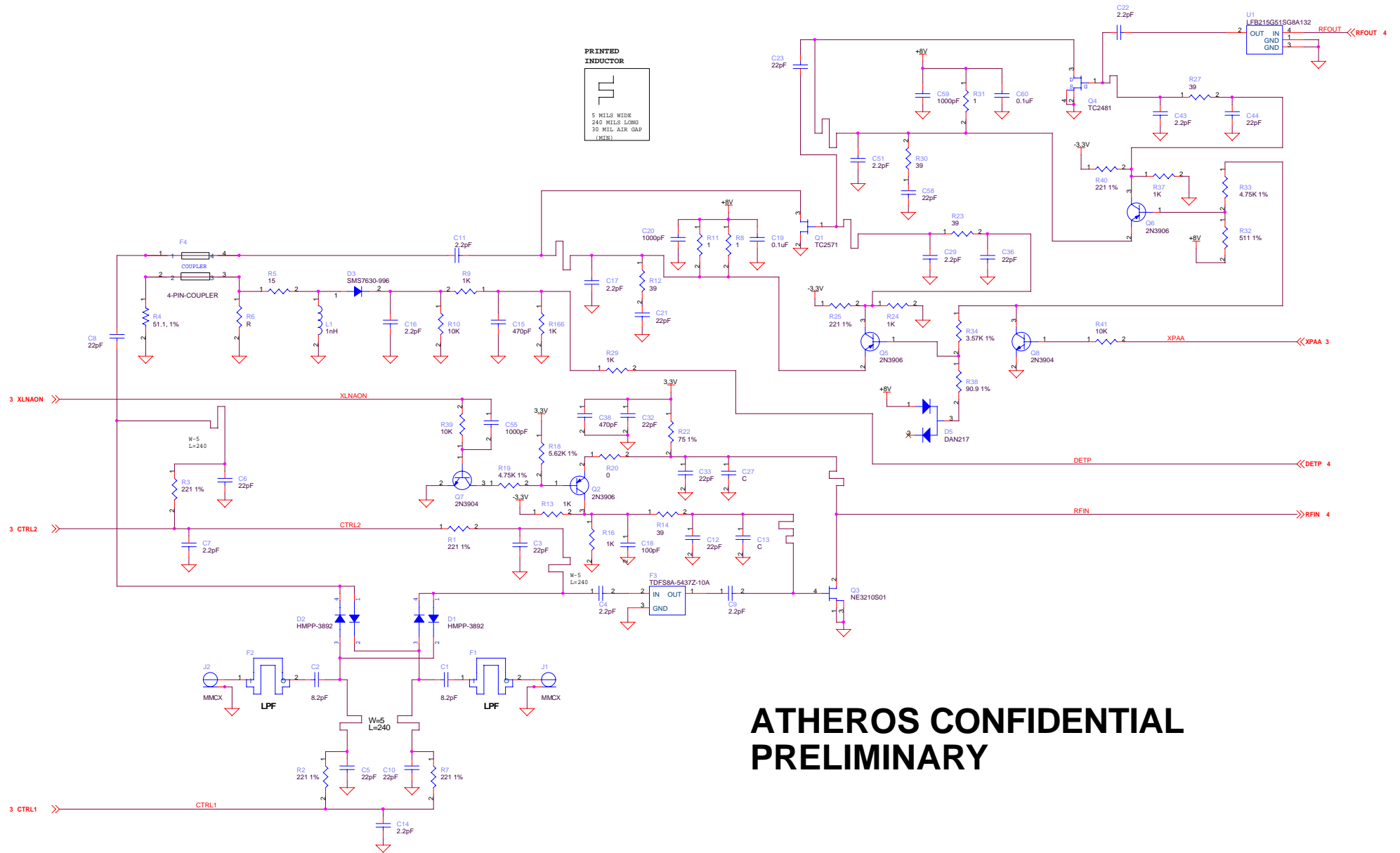
Locate C46 where  
2.5V\_A splits to  
either side of chip

File		
AR5001AP - AR511		
Size	Document Number	Rev
C	D:\SG\XV\5850X\5850 v04.dsn	0.4
Date:	Monday, September 02, 2002	Sheet 4 of 10

**PRINTED INDUCTOR**



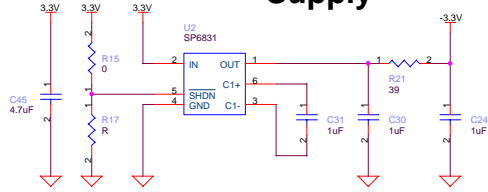
5 MILS WIDE  
240 MILS LONG  
39 MIL AIR GAP (MIN)



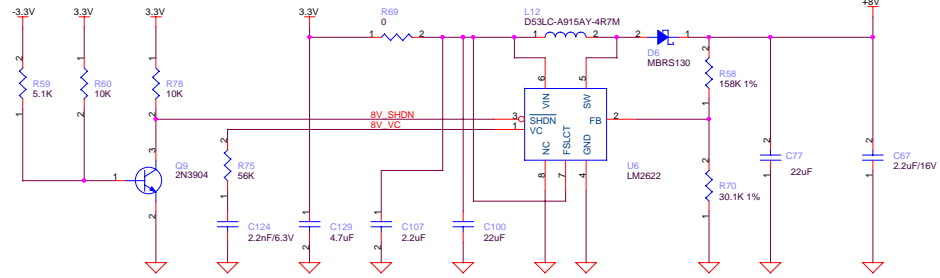
**ATHEROS CONFIDENTIAL  
PRELIMINARY**

File		
AR5001AP - Radio FrontEnd		
Size	Document Number	Rev
C	D:\SG\XV\5850X\5850 v04.dsn	0.4
Date:	Monday, September 02, 2002	Sheet 5 of 10

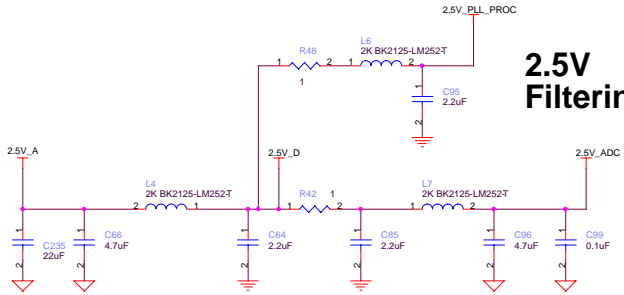
### -3.3V Supply



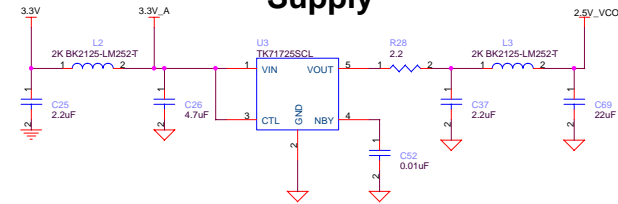
### +8V Supply



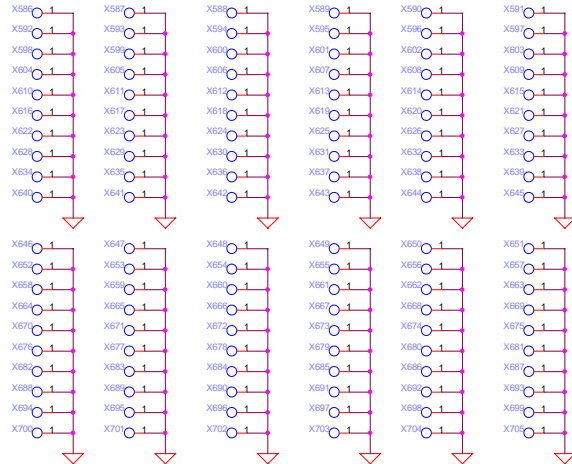
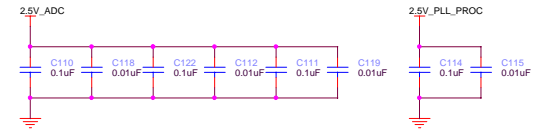
### 2.5V Filtering



### 2.5V VCO Supply

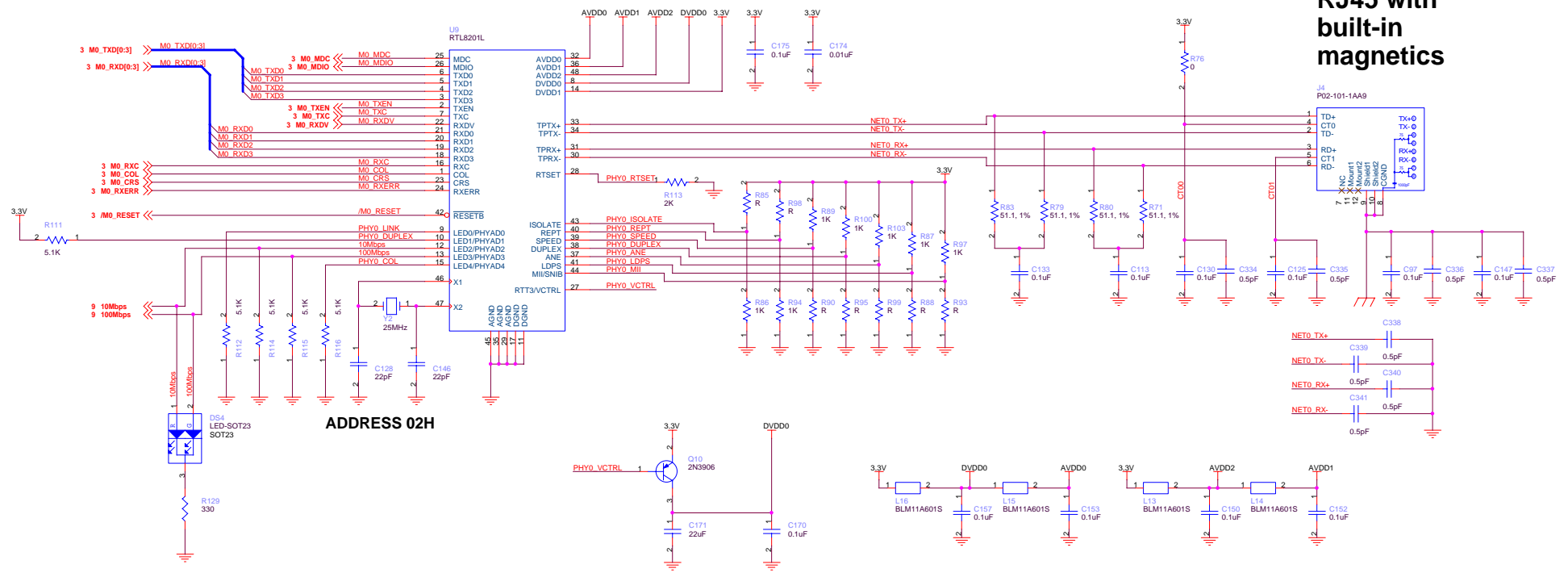


# ATHEROS CONFIDENTIAL PRELIMINARY



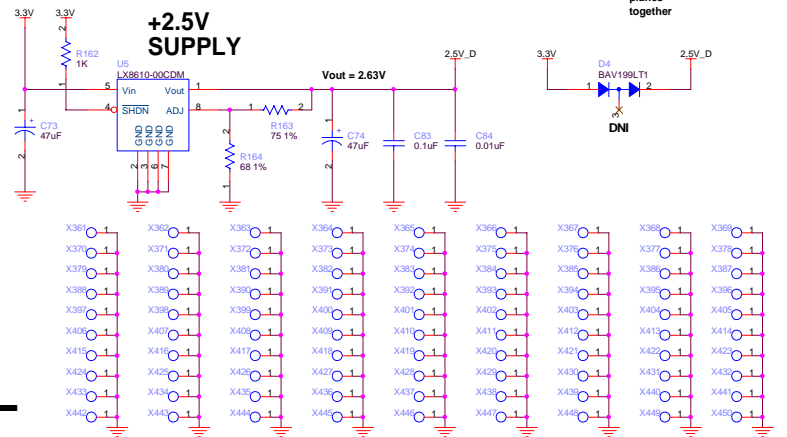
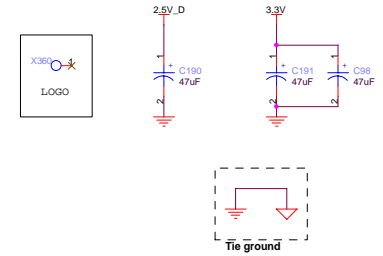
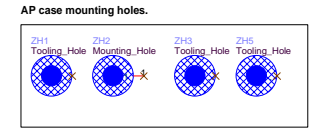
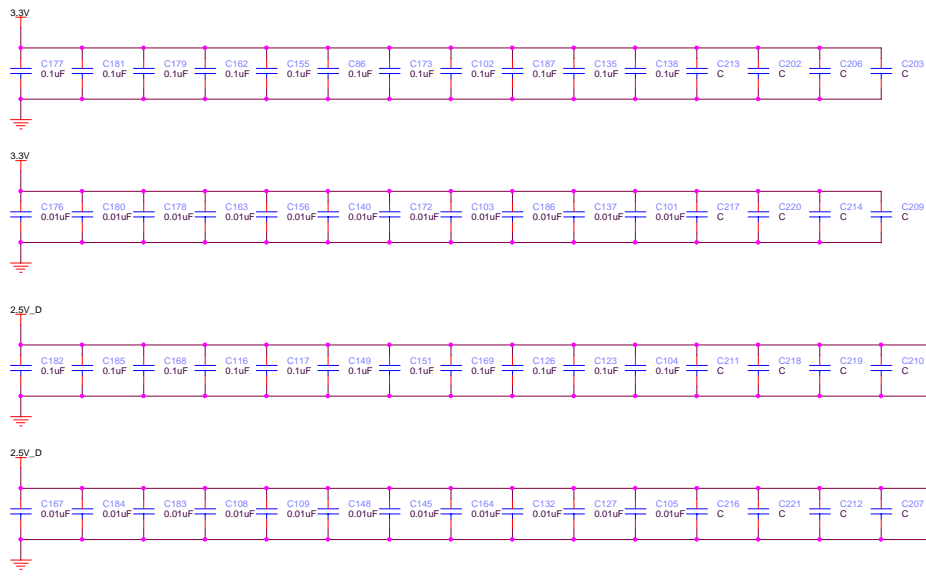
File		
AR5001AP - Radio Power and Decoupling		
Size	Document Number	Rev
C	D:\SG\XV\5850X\5850 v04.dsn	0.4
Date:	Monday, September 02, 2002	Sheet 6 of 10

# RJ45 with built-in magnetics



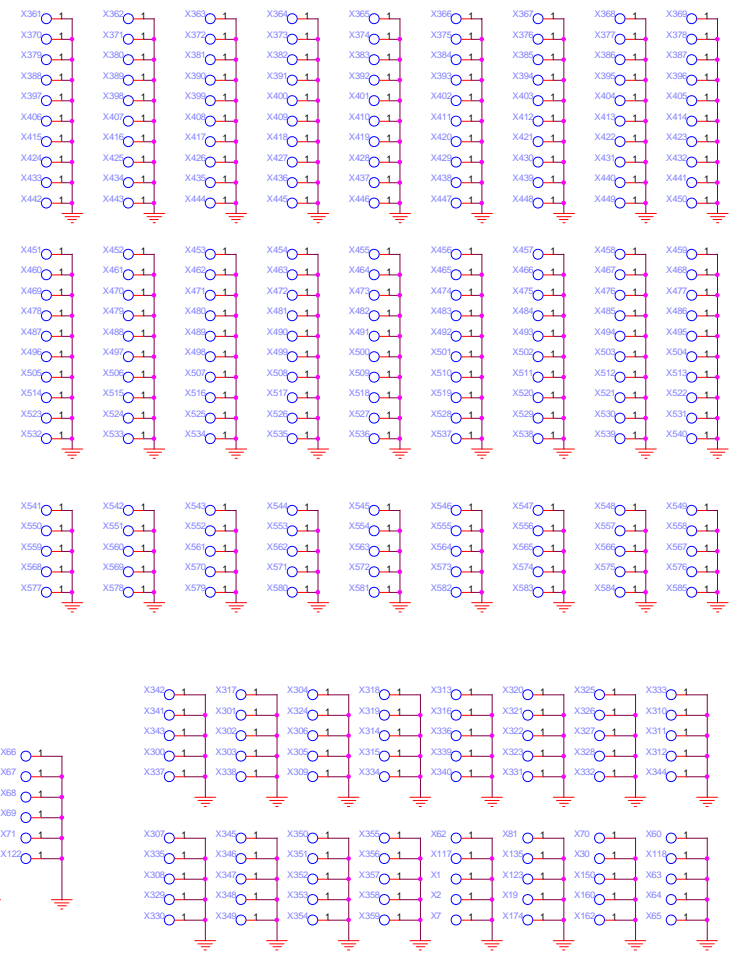
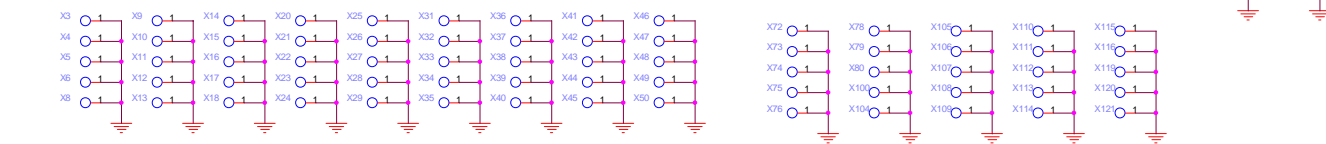
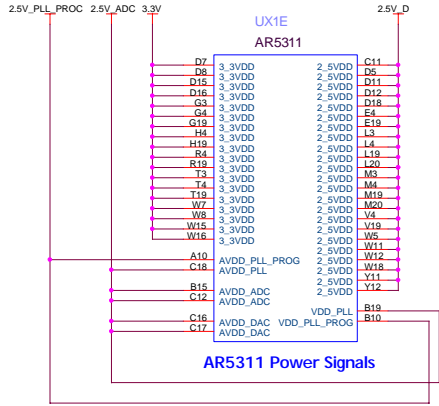
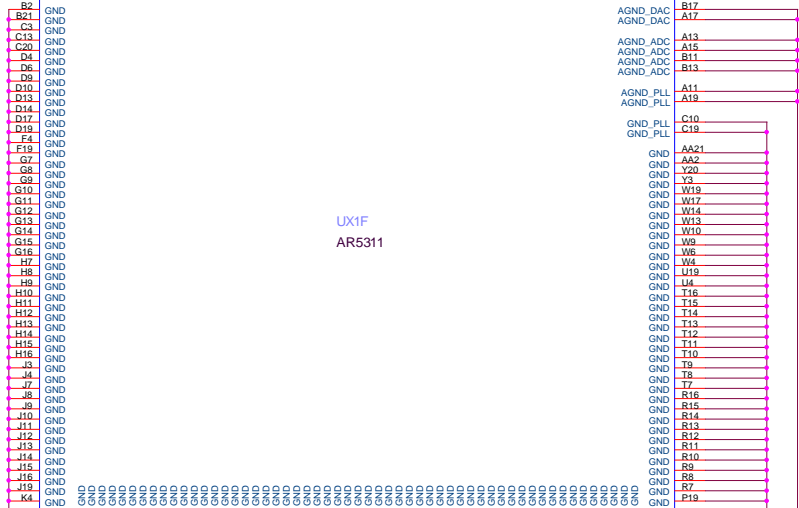
**ATHEROS CONFIDENTIAL  
PRELIMINARY**

File		
AR5001AP - Ethernet PHY		
Size	Document Number	Rev
C	D:\SG\XV\5850X\5850 v04.dsn	0.4
Date:	Monday, September 02, 2002	Sheet 7 of 10



# ATHEROS CONFIDENTIAL PRELIMINARY

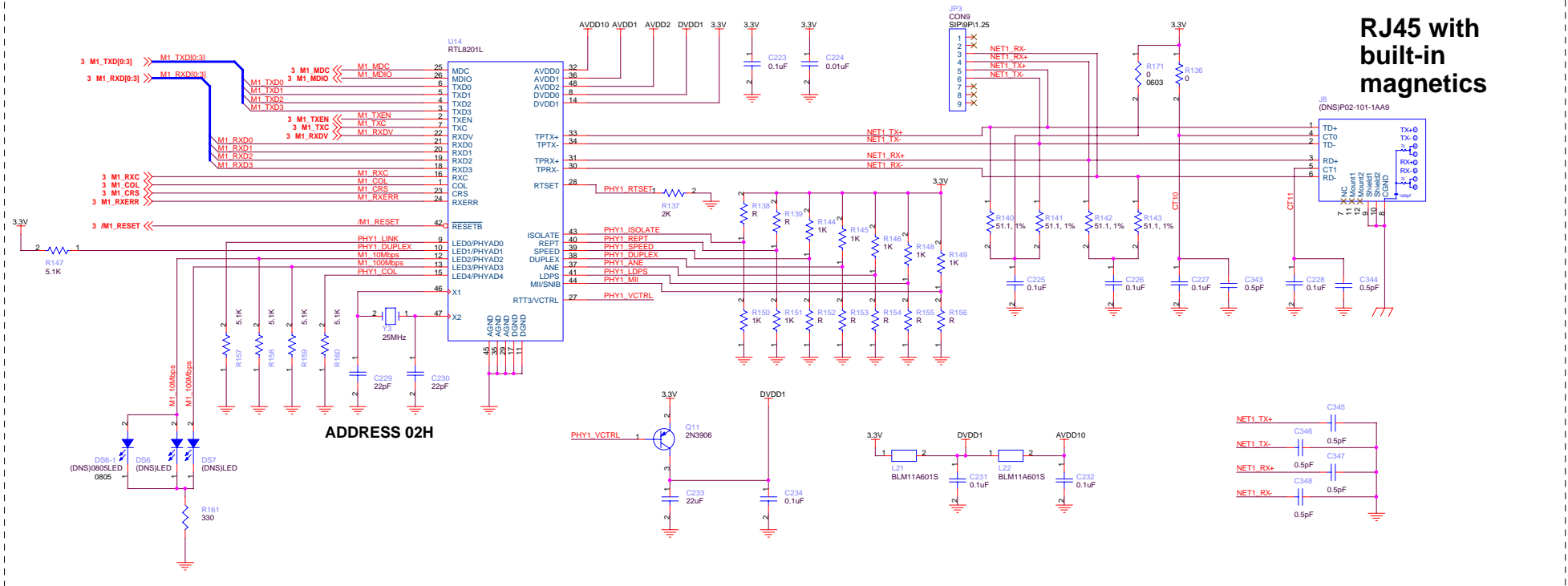
AR5311 Ground Signals



File		
AR5001AP - AR5311 Power Pins/ Decoupling		
Size	Document Number	Rev
C	D:\SG\XV\5850X\5850 v04.dsn	0.4
Date:	Monday, September 02, 2002	Sheet 8 of 10

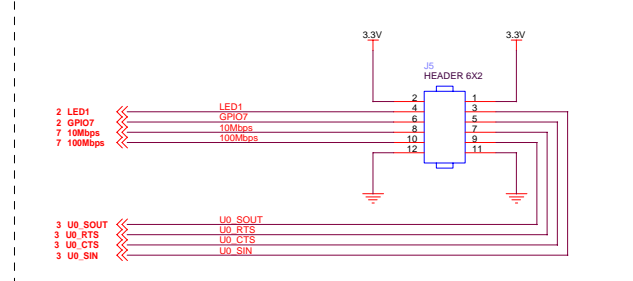


## Optional - 2nd Ethernet Port

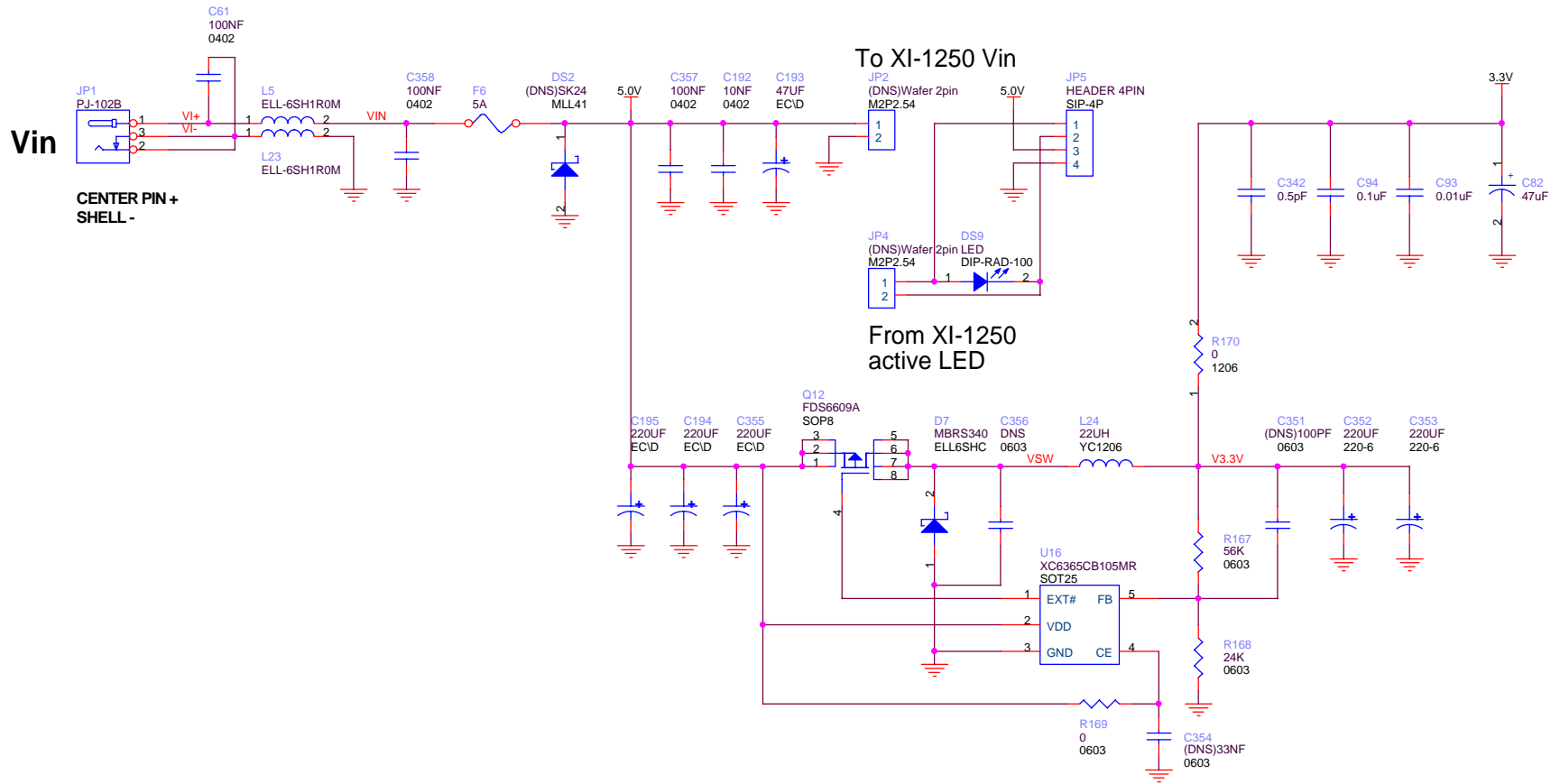


**ATHEROS CONFIDENTIAL  
PRELIMINARY**

## Optional for RS-232



File	AR5001AP - Optional Ethernet PHY	
Size	Document Number	Rev
C	D:\SG\XV\5850X\5850 v04.dsn	0.4
Date:	Monday, September 02, 2002	Sheet 9 of 10



Title		
AR5001AP - Optional Ethernet PHY		
Size	Document Number	Rev
B	D:\5G\XV5850\XV5850 v04.dsn	0.4
Date:	Monday, September 02, 2002	Sheet 10 of 10