

May 24, 2005

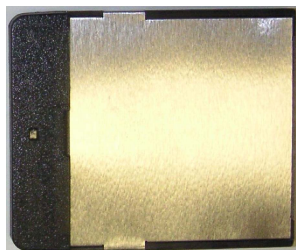
FCC ID : M4B6180210  
IC Number : 5844A-6180210  
Model : 6180210  
Applicant : TOYOTA INDUSTRIES CORPORATION

**Request for Limited Modular Approval**

The modular transmitter (Model: 6180210) is designed by TOYOTA INDUSTRIES CORPORATION. For portable use, this modular transmitter will be equipped only on Mobile Printer installed by the same condition, like which is produced by Seiko Epson Corporation. For mobile use, this modular transmitter can be equipped on any device, if the distance between the radiator and person's body keep at least 20cm or more. The modular transmitter complies the module basic requirement (Item 1 to 8 ) in FCC Public Notice: Part 15 Unlicensed Modular Transmitter Approval(DA00-1407) as indicated below:

**[Module basic requirement]**

- (1) Have its own RF shielding.: This modular transmitter has it own RF shielding. Please refer to the A1 Photo.



A1 Photo (Modular transmitter)

- (2) The modular transmitter must have buffered modulation/data inputs.: Data input to Modular transmitter is controlled as not generating excessive data speed and abnormal modulation.
- (3) The modular transmitter must have its own power supply regulation.: The module can regulate Power Supply by itself. (See Schematic)
- (4) The modular transmitter must comply with the antenna requirements of Section 15.203 and 15.204(c):. The antenna of this equipment is installed into the chassis. So, it is impossible for users to disconnect it. Accordingly, it is complied.
- (5) The modular transmitter must be tested in a stand alone.: The modular transmitter has been performed the testing as a stand alone and then confirmed the compliance. Please refer to the Test report. (No. 25IE0043-YK-1/ 25IE0043-YK-2)
- (6) The modular transmitter must be labeled with its own FCC ID number, and, if the FCC ID is not visible when The module is installed inside another device, then the outside of the device into which the module is installed must also display a label referring to the enclosed module.: This modular transmitter is complied with this requirement. Please refer to the file of Label drawing and location.
- (7) The modular transmitter must comply with any specific rule or operating requirements applicable to the transmitter and the manufacturer must provide adequate instructions along with the module to explain any such requirements.: The necessary explanation to be complied with this requirement is contained in the manual.
- (8) The modular transmitter must comply with any applicable RF exposure requirements.: The modular transmitter complies with FCC radiation exposure requirement specified in the FCC Rules 15.247(i). Please refer to the RF exposure statement and SAR Test Report (No.25IE0092-HO-1/ 25IE0092-HO-2).



---

Mitsuhiro Mabuchi

Group Manager

Engineering Office No.2, New Electronic Engineering Dept. Division 1, Corporate Technical Center.