

APPENDIX 2 : SAR Measurement data

UL Apex Co., Ltd.

Head Office EMC Lab.

4383-326 Asama-cho, Ise-shi, Mie-ken 516-0021 JAPAN

Telephone: +81 596 24 8116

Facsimile: +81 596 24 8124

GIGAWAVE 6180010 / Body / Bottom of card (Slot 1) / 2437MHz

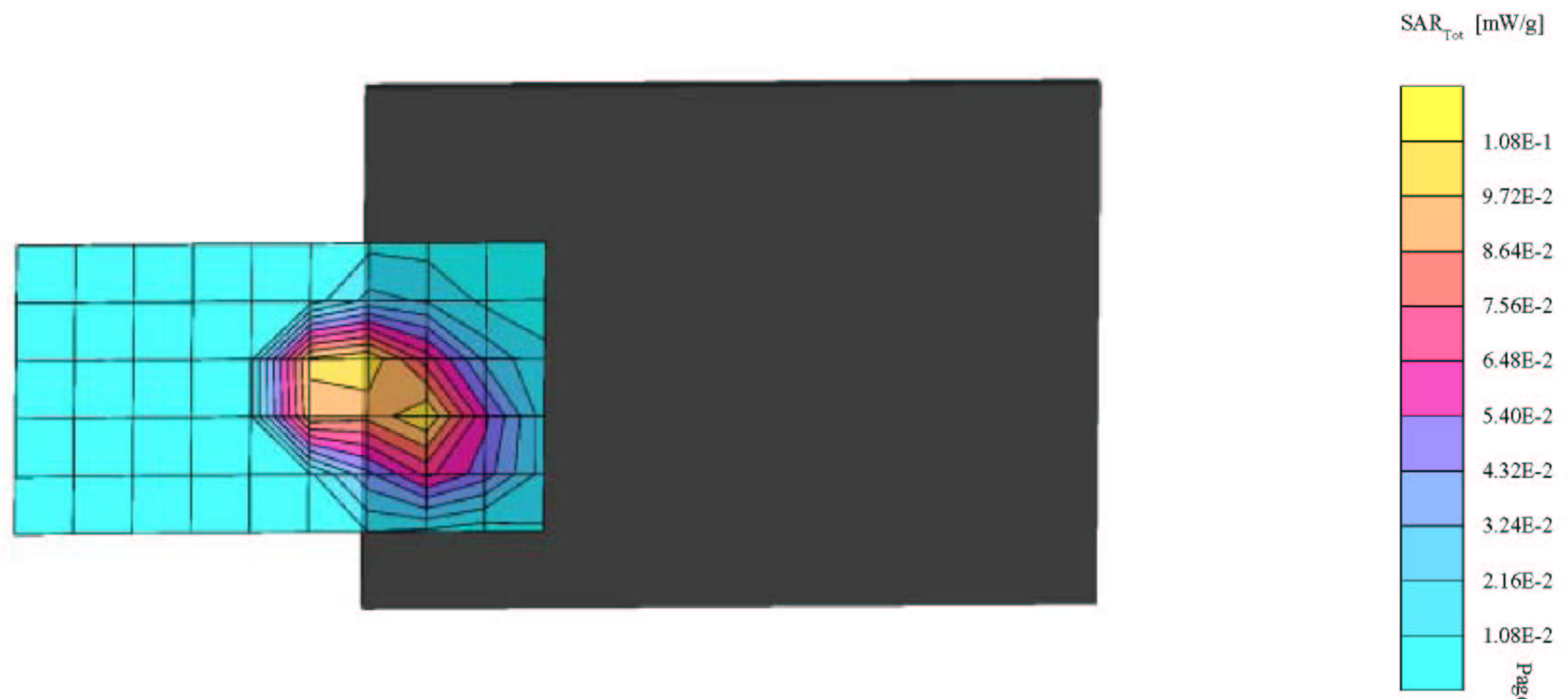
SAR (1g): 0.160 mW/g, SAR (10g): 0.0765 mW/g Worst-case extrapolation

Crest factor : 1.0

Medium : Body 2450 MHz: $\sigma = 2.03$ mho/m $\epsilon_r = 47.9$ $\rho = 1.00$ g/cm³
Phantom : SAM Flat
Probe : ET3DV6 - SN1684 ; ConvF(4.40, 4.40, 4.40)

Cube 5x5x7
Peak: 0.325 mW/g
Penetration depth: 6.6 (6.4, 7.2) [mm]

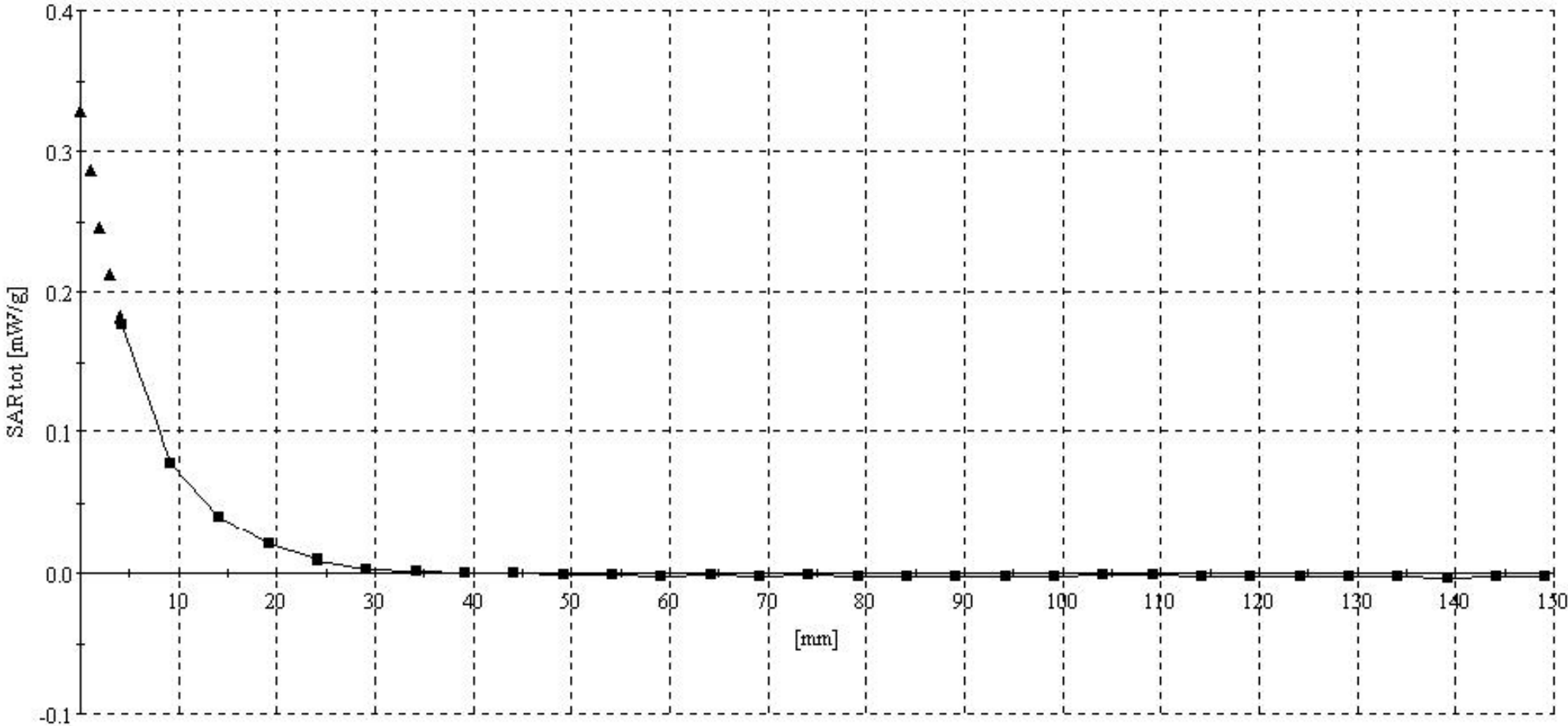
Ambient Temperature / 23.7 degree.c
Liquid Temperature / Before 21.4 degree.c /After 21.4 degree.c



Z-axis scan at max SAR location GIGAWAVE 6180010 / Body / Bottom of card (Slot 1) / 2437MHz

Crest factor : 1.0

Medium : Body 2450 MHz: $\sigma = 2.03$ mho/m $\epsilon_r = 47.9$ $\rho = 1.00$ g/cm³
Phantom : SAM
Probe : ET3DV6 - SN1684 ; ConvF(4.40,4.40,4.40)



GIGAWAVE 6180010 / Body / Top of card (Slot 1) / 2437MHz

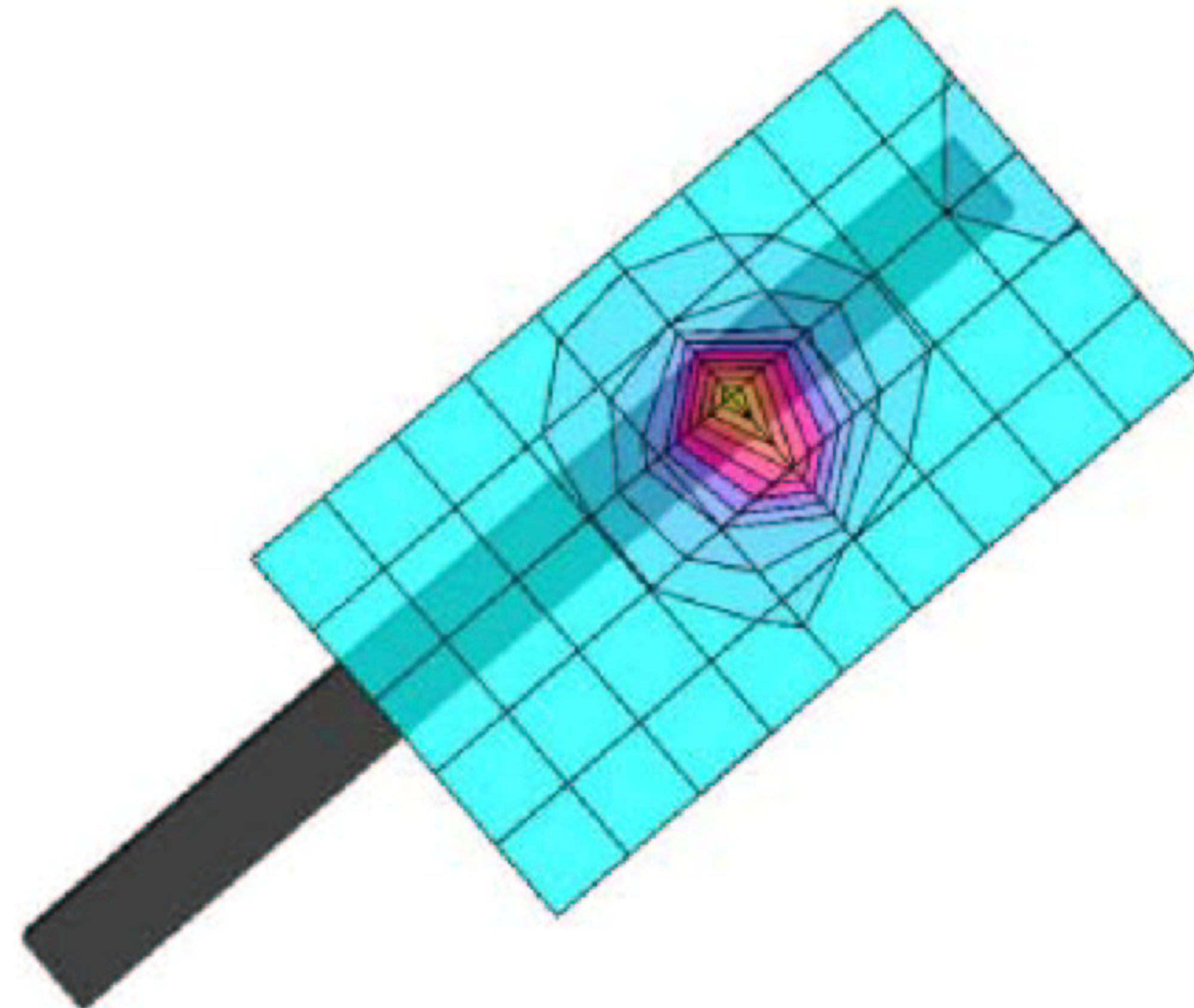
SAR (1g): 0.0492 mW/g, SAR (10g): 0.0234 mW/g Worst-case extrapolation

Crest factor : 1.0

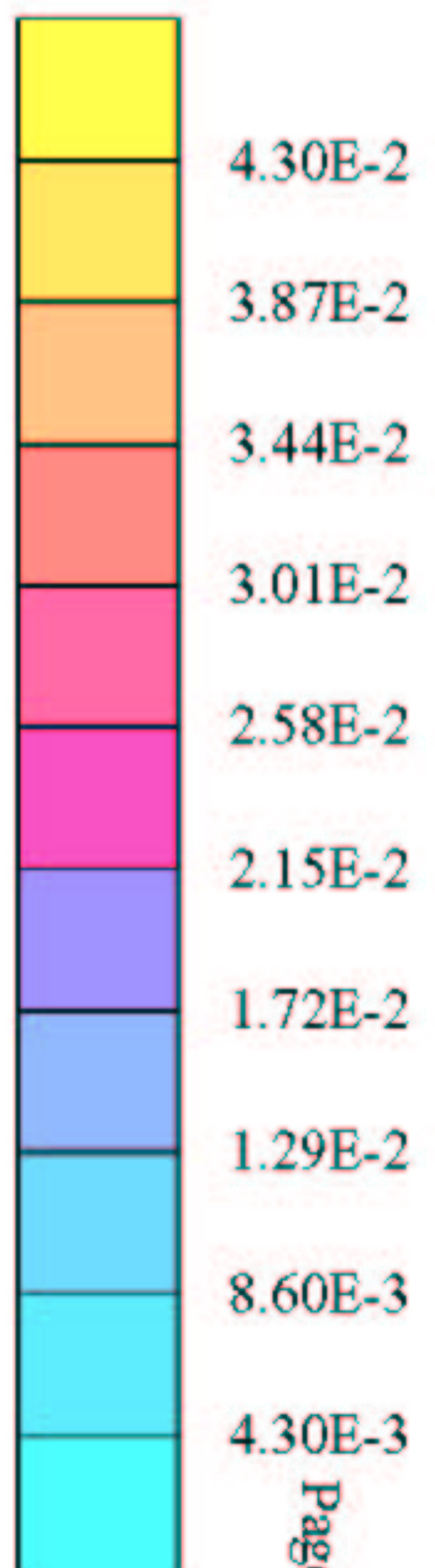
Medium : Body 2450 MHz: $\sigma = 2.03 \text{ mho/m}$ $\epsilon_r = 47.9$ $\rho = 1.00 \text{ g/cm}^3$
Phantom : SAM Flat
Probe : ET3DV6 - SN1684 ; ConvF(4.40, 4.40, 4.40)

Cube 5x5x7
Peak: 0.1000 mW/g
Penetration depth: 6.6 (6.5, 6.8) [mm]

Ambient Temperature / 23.7 degree.c
Liquid Temperature / Before 21.2 degree.c /After 21.2 degree.c



SAR_{Tot} [mW/g]



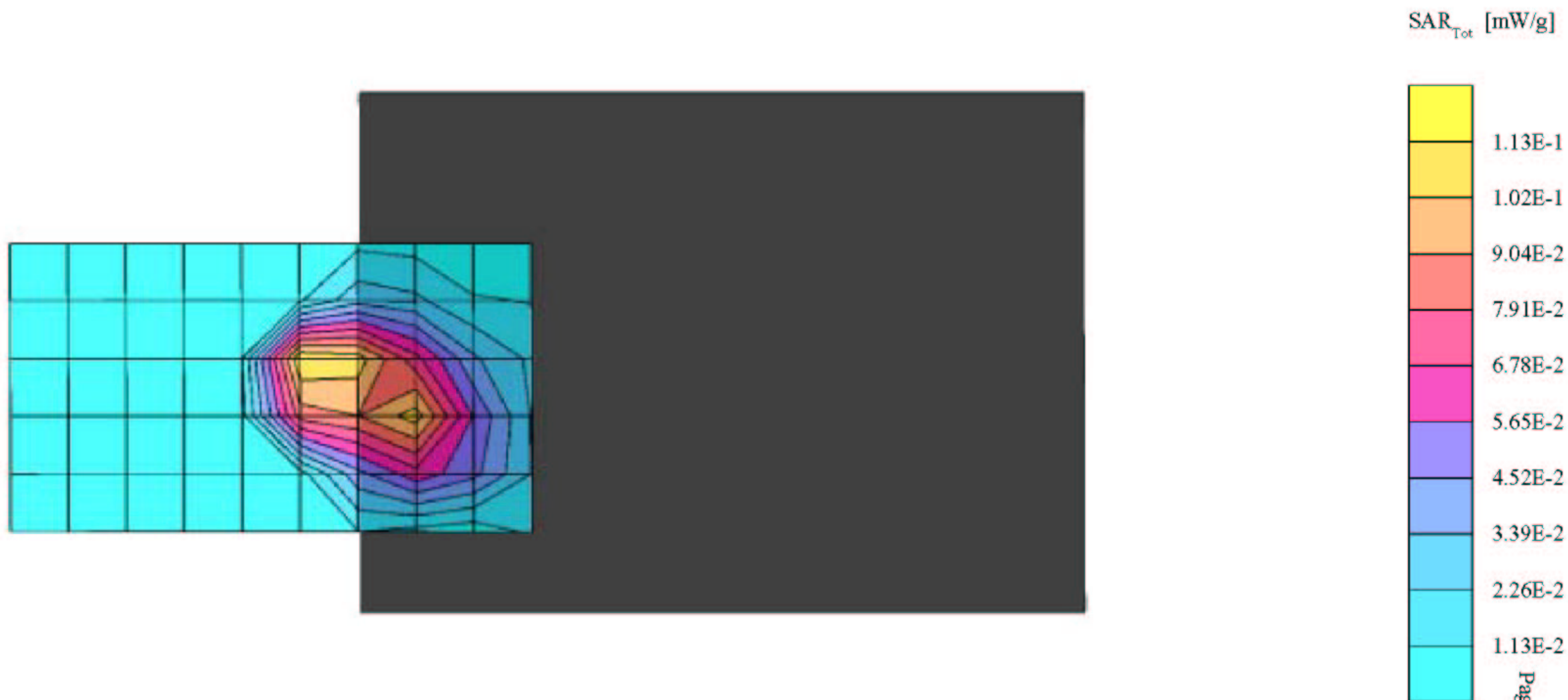
SAR (1g): 0.149 mW/g, SAR (10g): 0.0744 mW/g Worst-case extrapolation

Crest factor : 1.0

Medium : Body 2450 MHz: $\sigma = 2.03 \text{ mho/m}$ $\epsilon_r = 47.9$ $\rho = 1.00 \text{ g/cm}^3$
Phantom : SAM Flat
Probe : ET3DV6 - SN1684 ; ConvF(4.40, 4.40, 4.40)

Cube 5x5x7
Peak: 0.300 mW/g
Penetration depth: 6.8 (6.5, 7.6) [mm]

Ambient Temperature / 23.7 degree.c
Liquid Temperature / Before 21.4 degree.c /After 21.6 degree.c



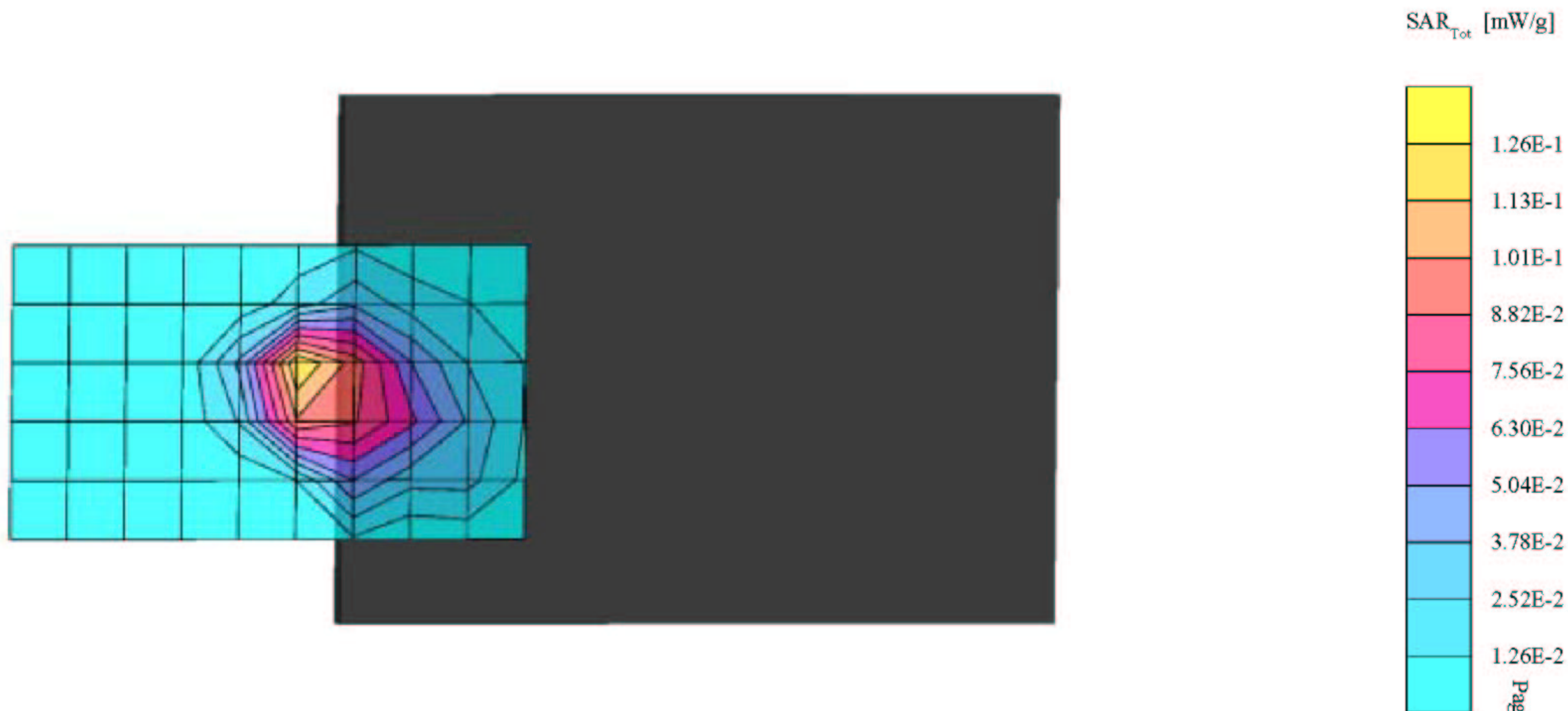
SAR (1g): 0.135 mW/g, SAR (10g): 0.0676 mW/g Worst-case extrapolation

Crest factor : 1.0

Medium : Body 2450 MHz: $\sigma = 2.03$ mho/m $\epsilon_r = 47.9$ $\rho = 1.00$ g/cm³
Phantom : SAM Flat
Probe : ET3DV6 - SN1684 ; ConvF(4.40, 4.40, 4.40)

Cube 5x5x7
Peak: 0.269 mW/g
Penetration depth: 6.7 (6.5, 7.4) [mm]

Ambient Temperature / 23.7 degree.c
Liquid Temperature / Before 21.6 degree.c /After 21.5 degree.c



GIGAWAVE 6180010 / Body / Bottom of card (Slot 2) / 2437MHz

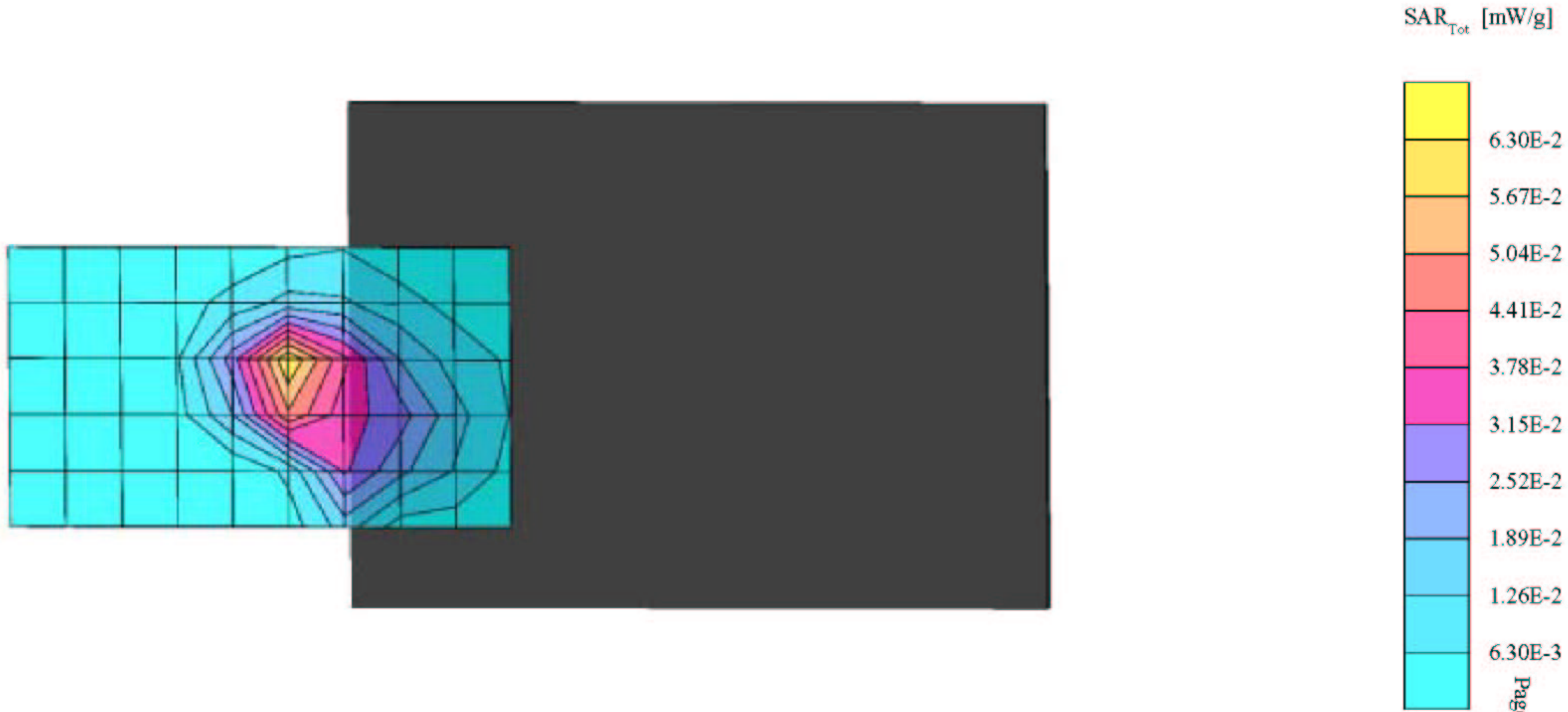
SAR (1g): 0.0670 mW/g, SAR (10g): 0.0338 mW/g Worst-case extrapolation

Crest factor : 1.0

Medium : Body 2450 MHz: $\sigma = 2.03 \text{ mho/m}$ $\epsilon_r = 47.9$ $\rho = 1.00 \text{ g/cm}^3$
Phantom : SAM Flat
Probe : ET3DV6 - SN1684 ; ConvF(4.40, 4.40, 4.40)

Cube 5x5x7
Peak: 0.132 mW/g
Penetration depth: 6.9 (6.6, 7.8) [mm]

Ambient Temperature / 23.7 degree.c
Liquid Temperature / Before 21.5 degree.c /After 21.5 degree.c



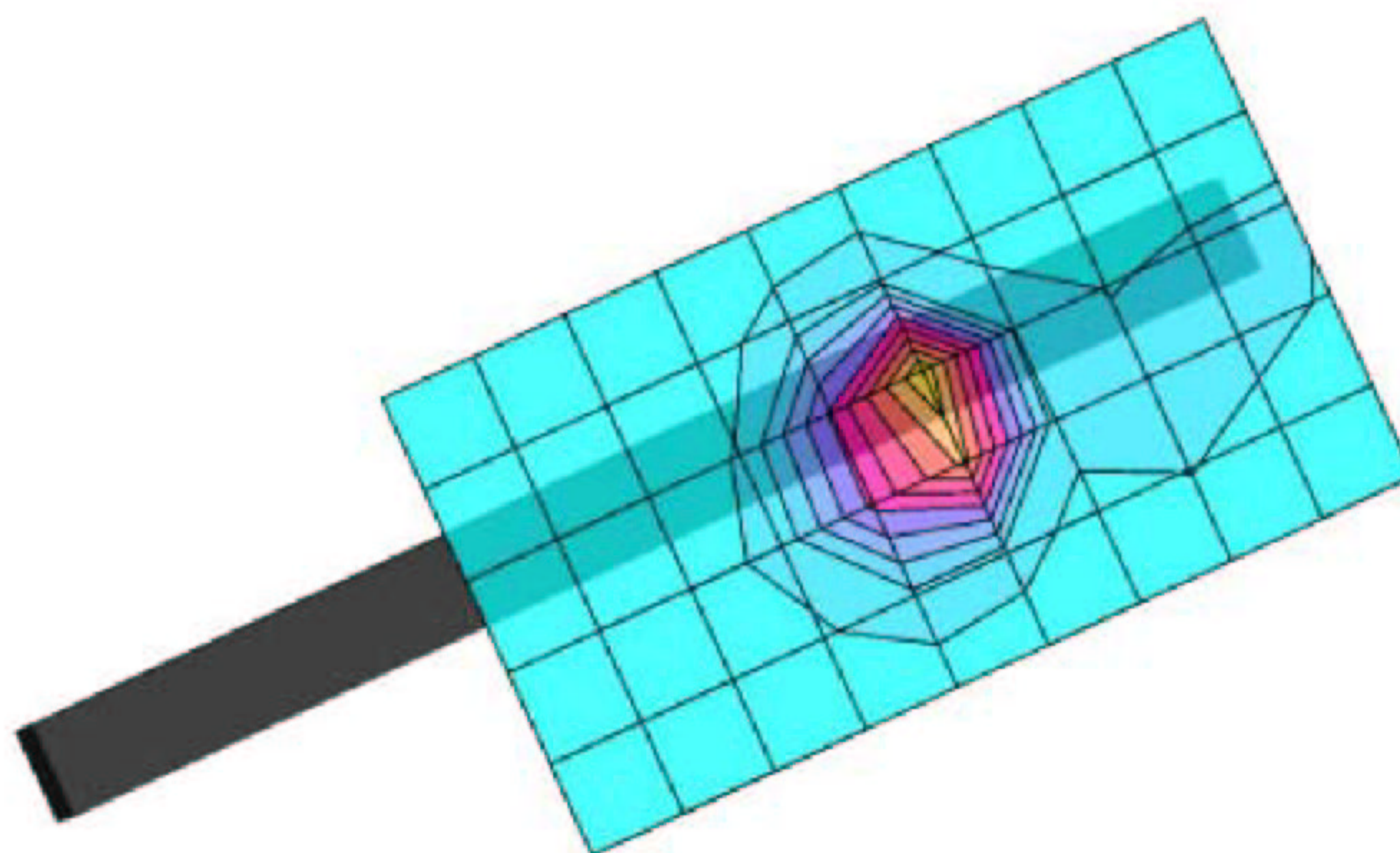
SAR (1g): 0.0514 mW/g, SAR (10g): 0.0243 mW/g Worst-case extrapolation

Crest factor : 1.0

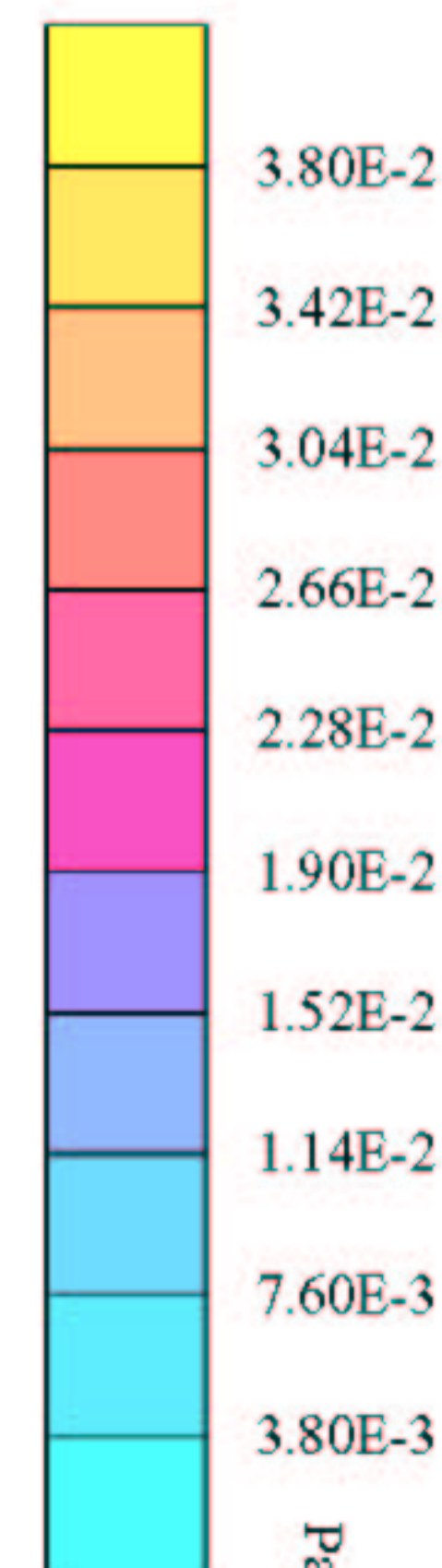
Medium : Body 2450 MHz: $\sigma = 2.03 \text{ mho/m}$ $\epsilon_r = 47.9$ $\rho = 1.00 \text{ g/cm}^3$
Phantom : SAM Flat
Probe : ET3DV6 - SN1684 ; ConvF(4.40, 4.40, 4.40)

Cube 5x5x7
Peak: 0.105 mW/g
Penetration depth: 6.9 (6.5, 7.9) [mm]

Ambient Temperature / 23.7 degree.c
Liquid Temperature / Before 21.1 degree.c /After 21.1 degree.c



SAR_{Tot} [mW/g]



GIGAWAVE 6180010 / Body / Bottom of card (Slot 2) / 2412MHz

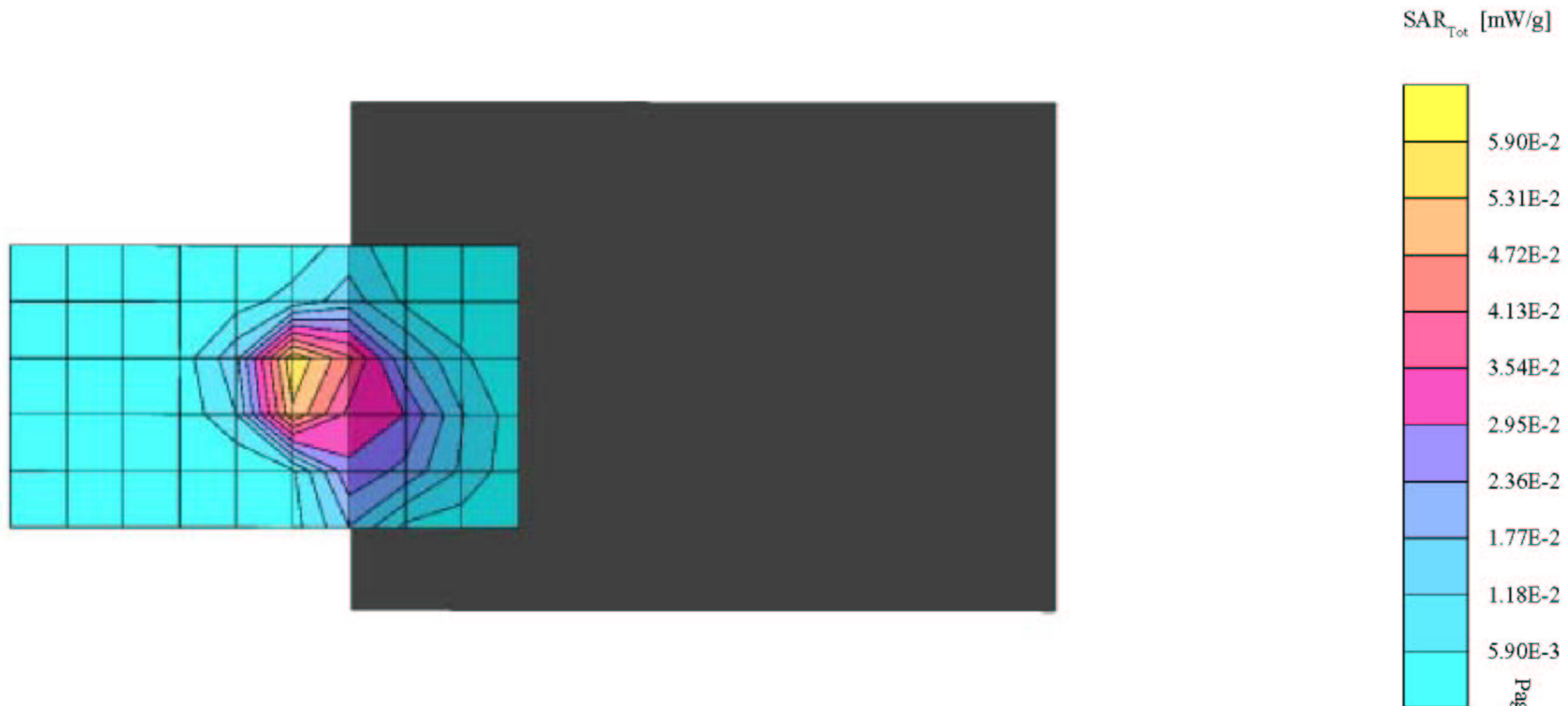
SAR (1g): 0.0711 mW/g, SAR (10g): 0.0349 mW/g Worst-case extrapolation

Crest factor : 1.0

Medium : Body 2450 MHz: $\sigma = 2.03 \text{ mho/m}$ $\epsilon_r = 47.9$ $\rho = 1.00 \text{ g/cm}^3$
Phantom : SAM Flat
Probe : ET3DV6 - SN1684 ; ConvF(4.40, 4.40, 4.40)

Cube 5x5x7
Peak: 0.142 mW/g
Penetration depth: 6.9 (6.6, 7.5) [mm]

Ambient Temperature / 23.7 degree.c
Liquid Temperature / Before 21.1 degree.c /After 21.1 degree.c



GIGAWAVE 6180010 / Body / Bottom of card (Slot 2) / 2462MHz

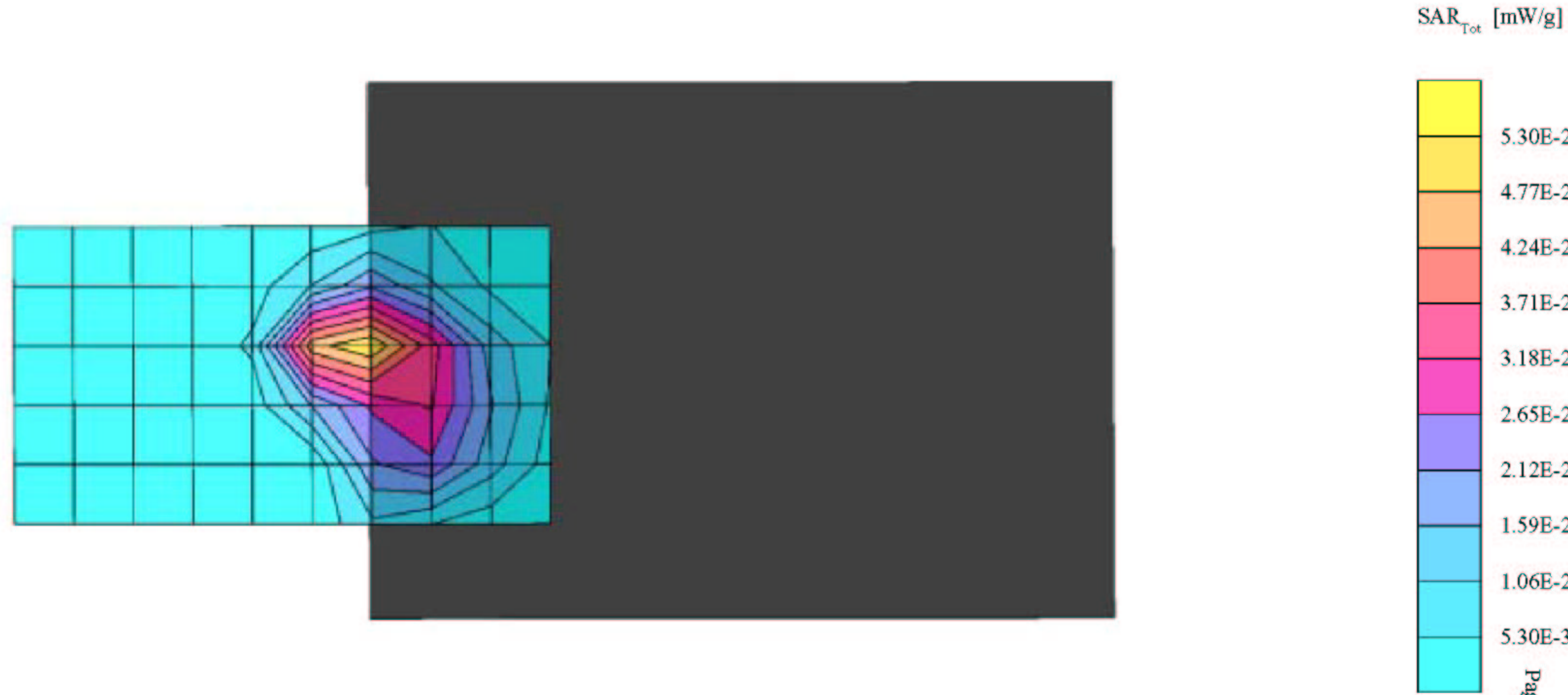
SAR (1g): 0.0611 mW/g, SAR (10g): 0.0301 mW/g Worst-case extrapolation

Crest factor : 1.0

Medium : Body 2450 MHz: $\sigma = 2.03 \text{ mho/m}$ $\epsilon_r = 47.9$ $\rho = 1.00 \text{ g/cm}^3$
Phantom : SAM Flat
Probe : ET3DV6 - SN1684 ; ConvF(4.40, 4.40, 4.40)

Cube 5x5x7
Peak: 0.122 mW/g
Penetration depth: 6.7 (6.5, 7.1) [mm]

Ambient Temperature / 23.7 degree.c
Liquid Temperature / Before 21.1 degree.c /After 21.1 degree.c



APPENDIX 3 : Validation Measurement data

System Validation / Dipole 2450MHz

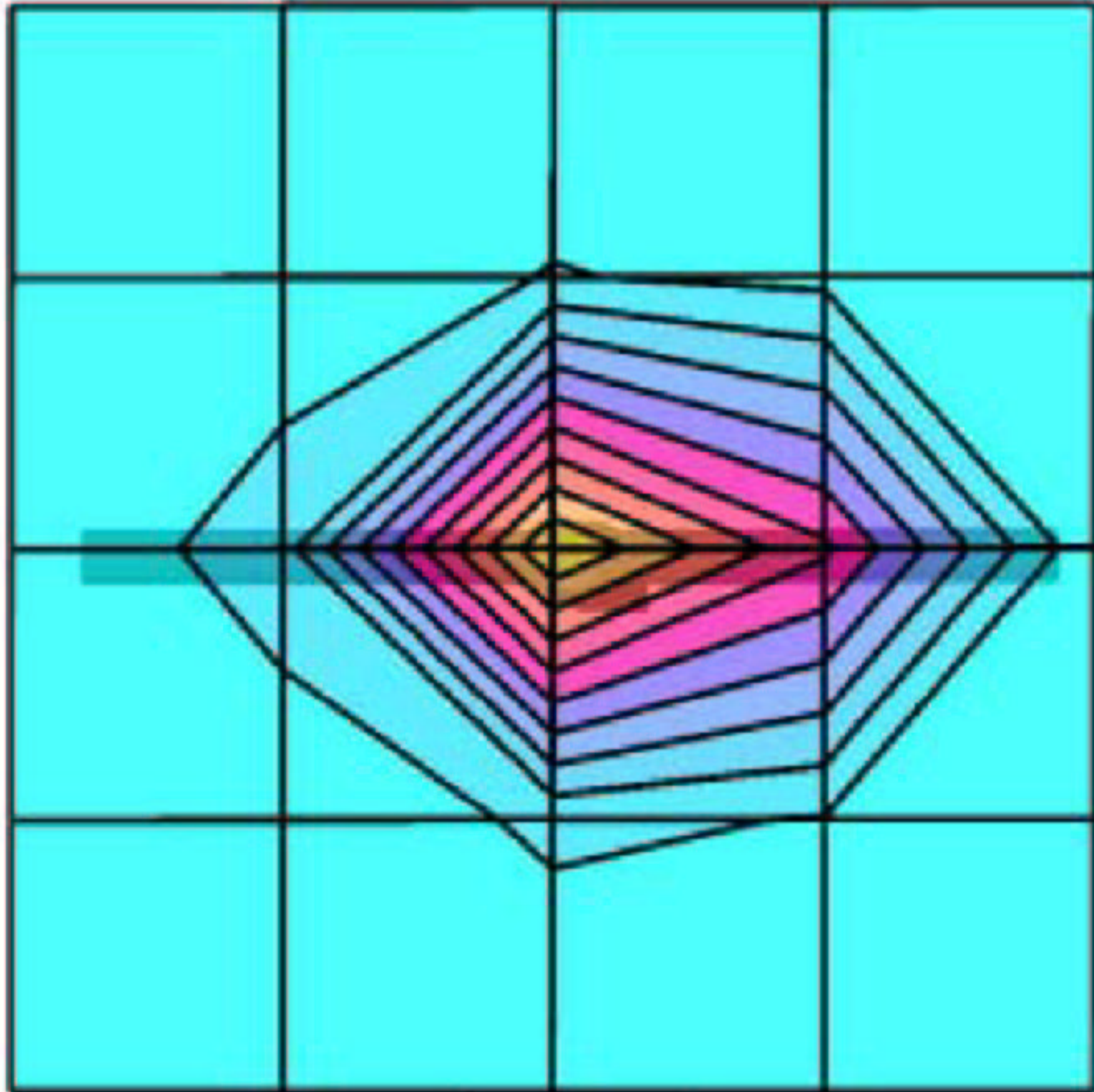
SAR (1g): 13.9 mW/g ± 0.04 dB, SAR (10g): 6.38 mW/g ± 0.01 dB Worst-case extrapolation

Crest factor : 1.0

Medium : Head 2450 MHz: $\sigma = 1.80$ mho/m $\epsilon_r = 36.5$ $\rho = 1.00$ g/cm³
Phantom : SAM Flat
Probe : ET3DV6 - SN1684 ; ConvF(4.90, 4.90, 4.90)

Cubes (2)
Peak: 28.7 mW/g ± 0.09 dB
Penetration depth: 6.4 (6.1, 7.1) [mm]
Powerdrift: -0.03 dB

Forward Conducted Power / 250mW
Ambient Temperature / 24.8degree.c
Liquid Temperature / Before 23.5 degree.c /After 23.5 degree.c



SAR_{Tot} [mW/g]

