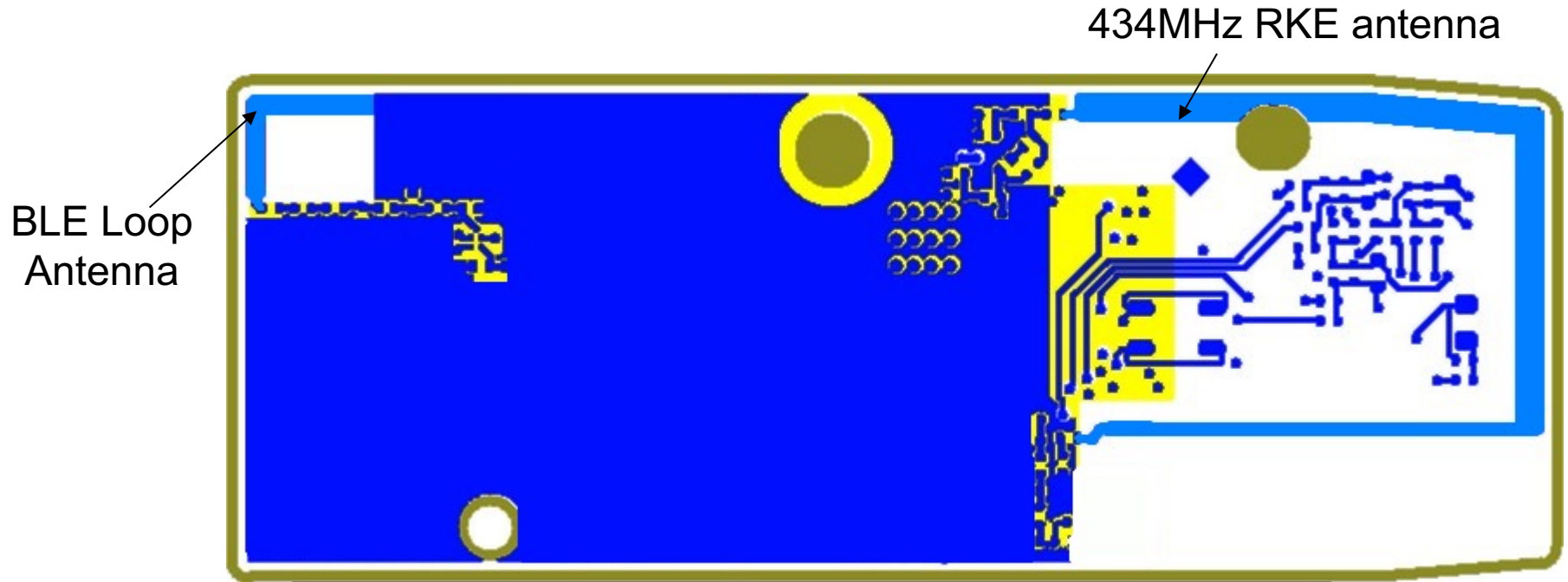




Remote Cloud Key 2

PCB antenna Info

PCB Trace Antennas



Antenna Peak Gain	dBi
BLE antenna	-1.0
434MHz RKE antenna	-11.2

Compliance to FCC 15.203: Per diagram above, RCK has only permanently attached PCB trace antennas and no other antennas other than those on the PCB can be used with the device.