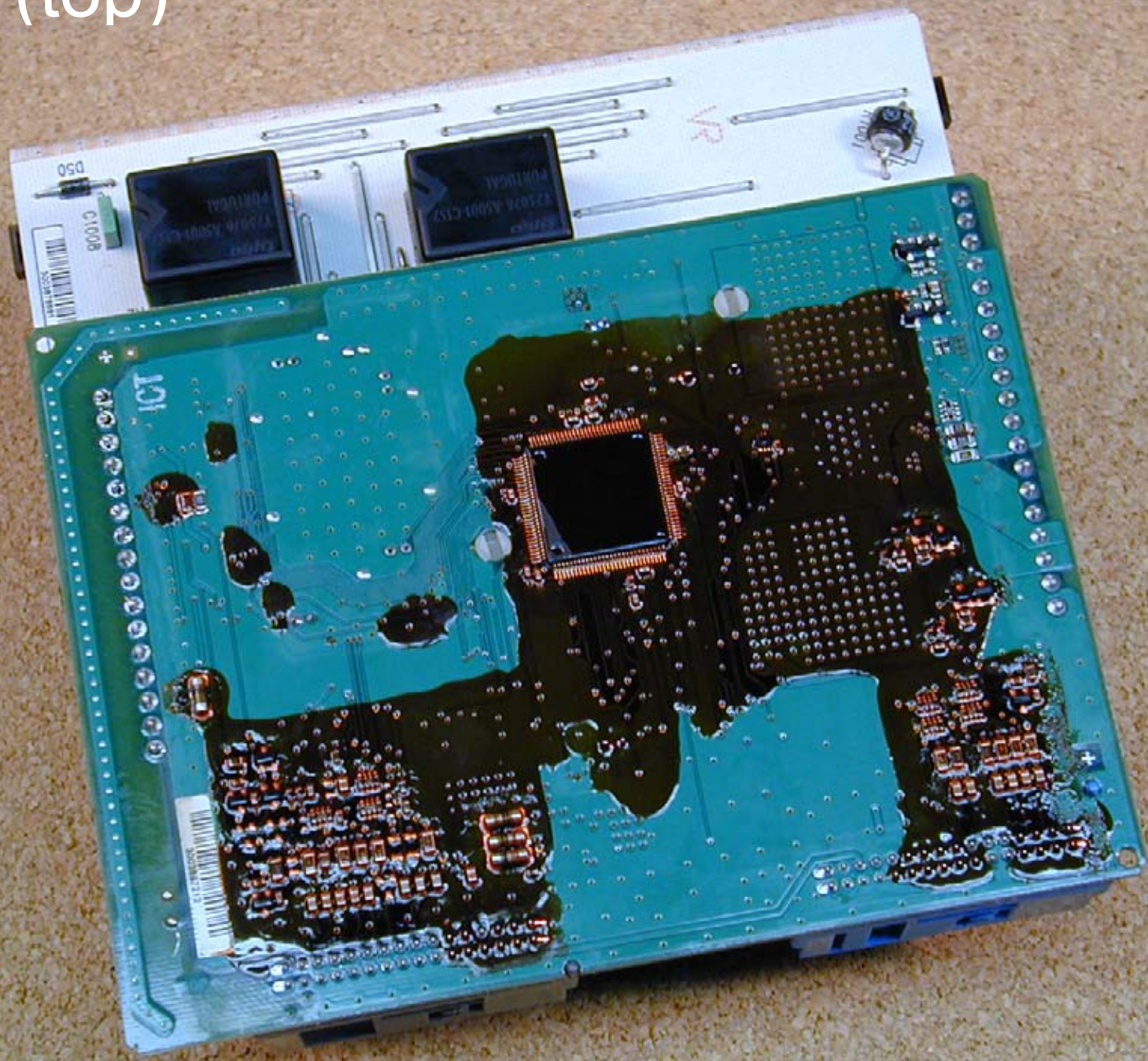
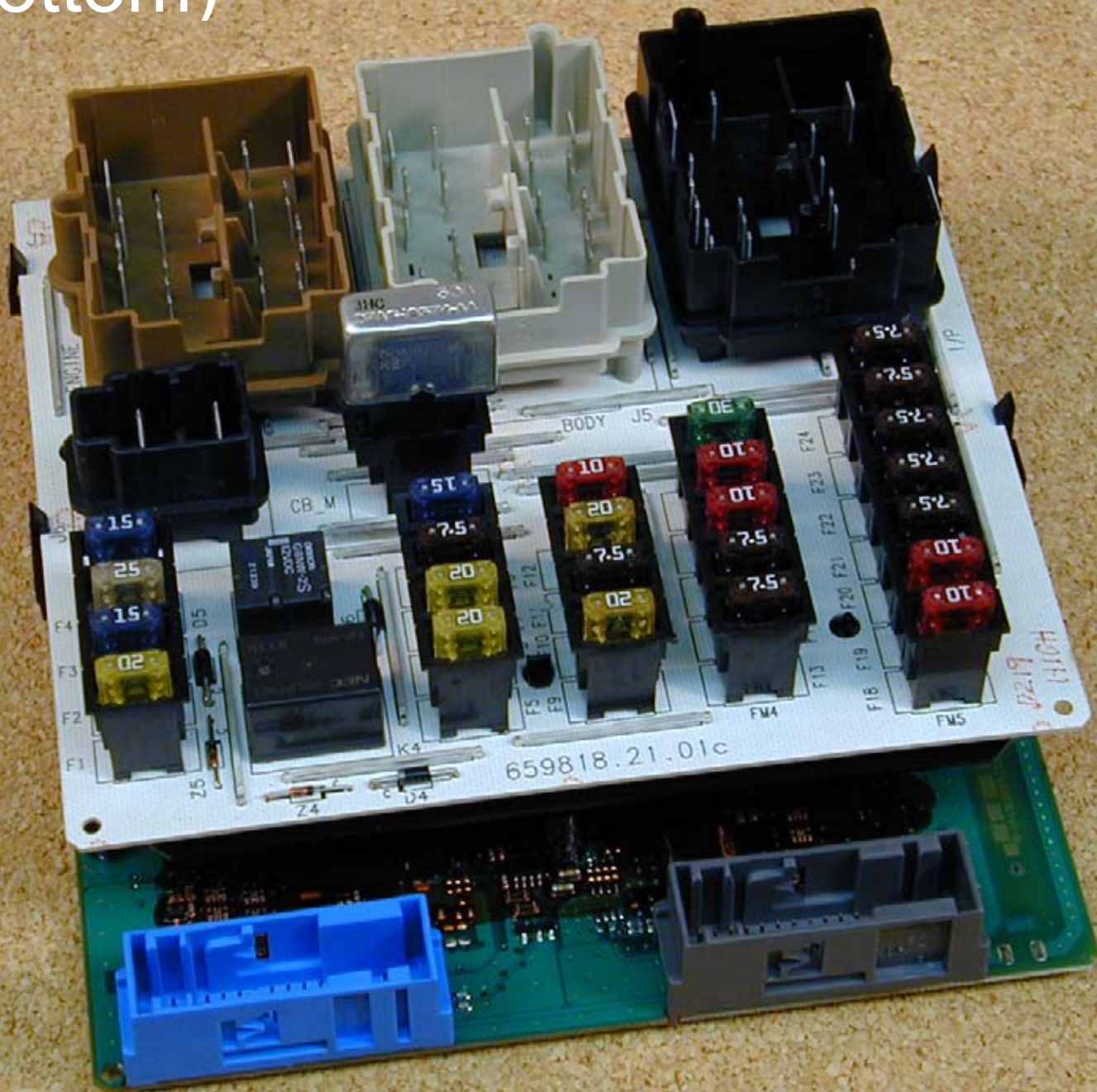


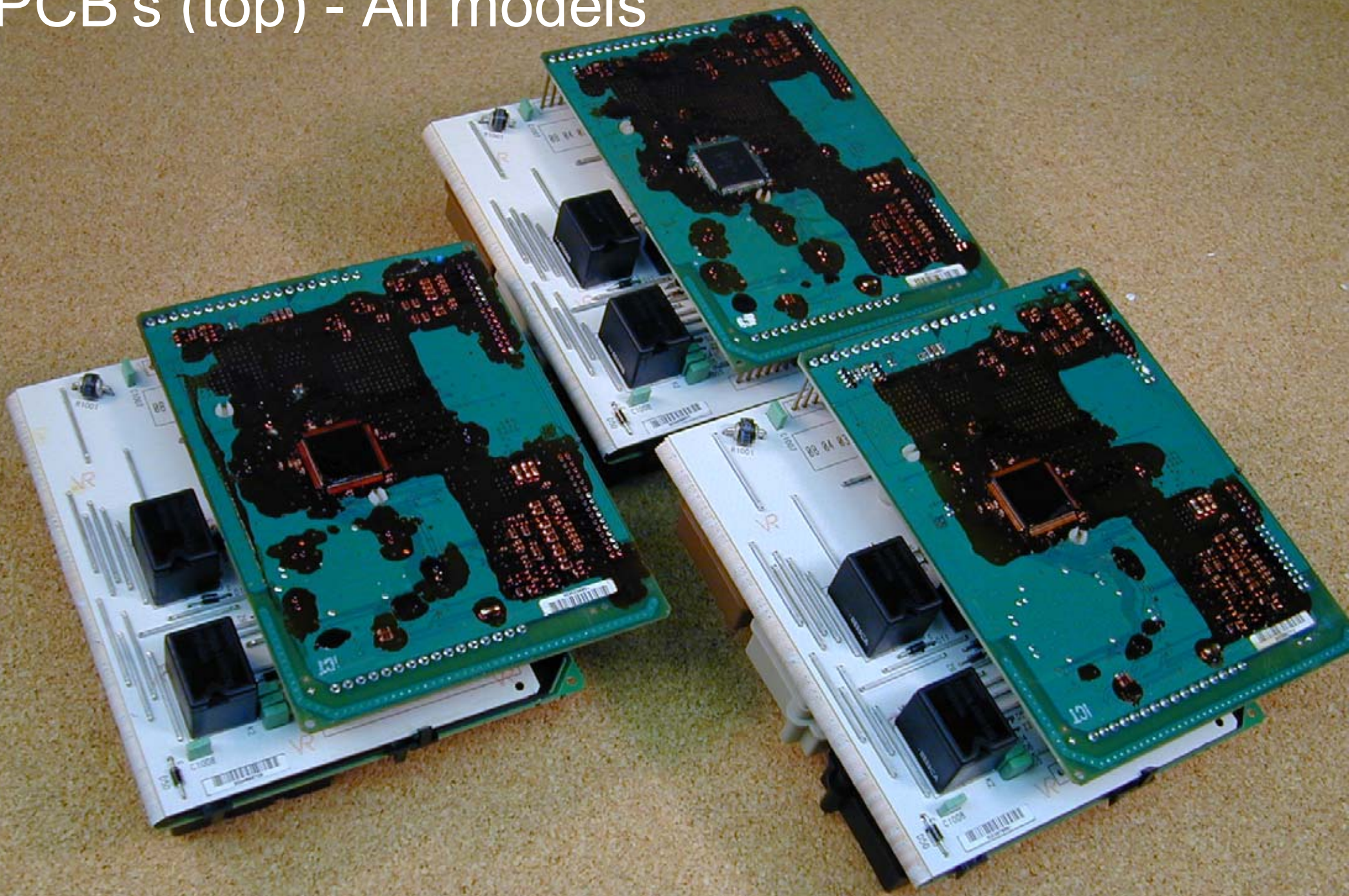
PCB's (top)



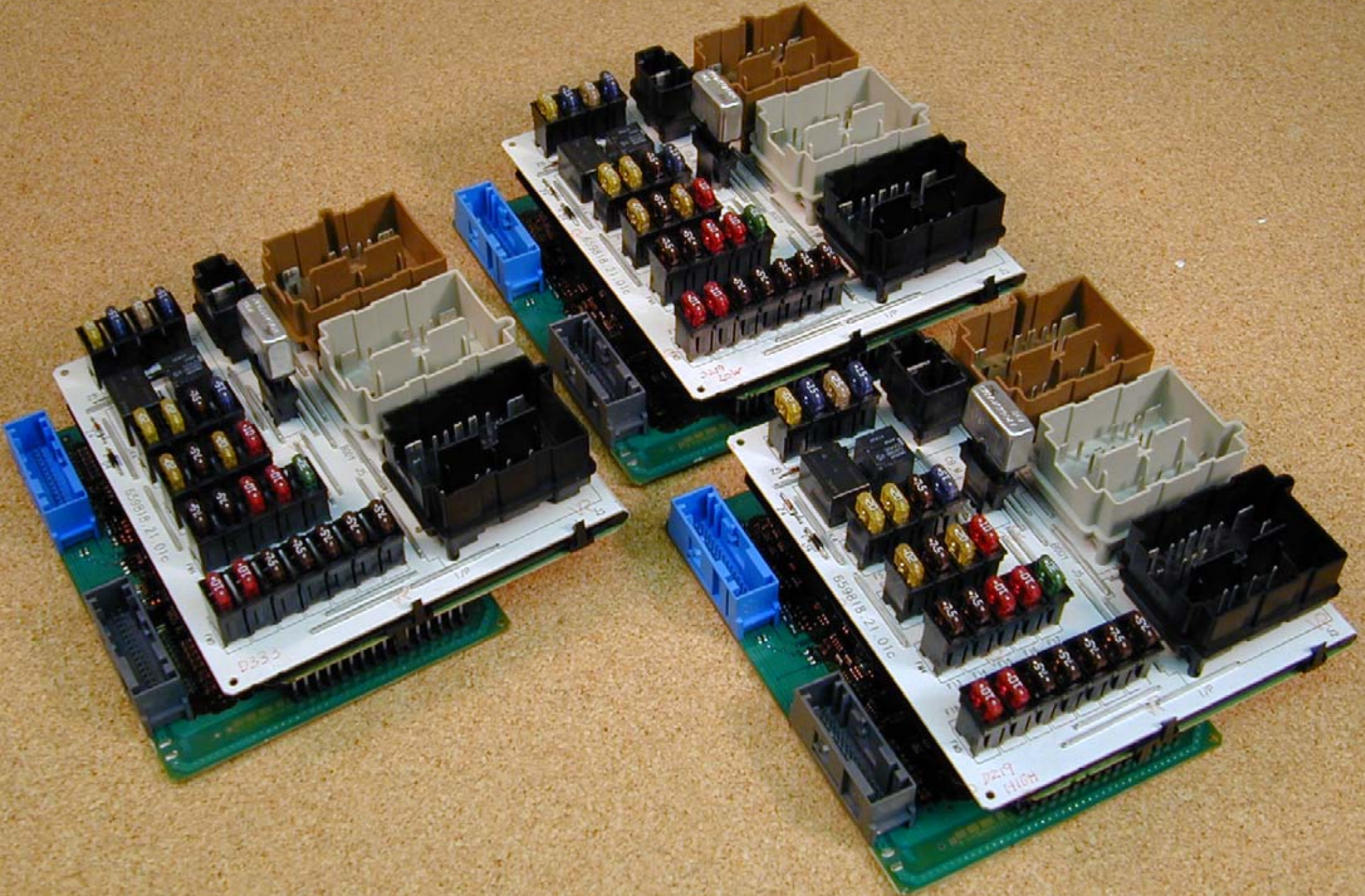
PCB's (bottom)



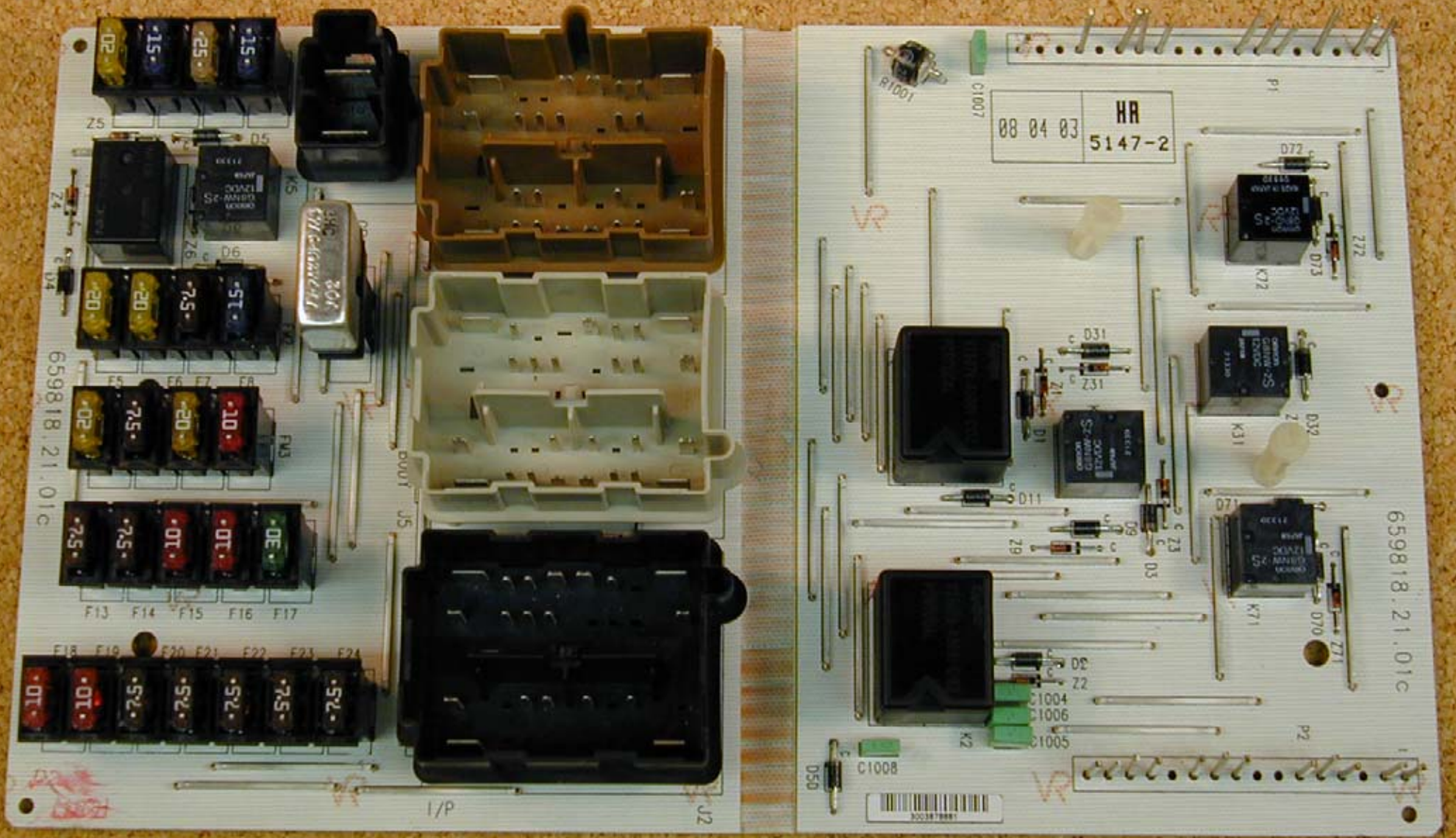
PCB's (top) - All models



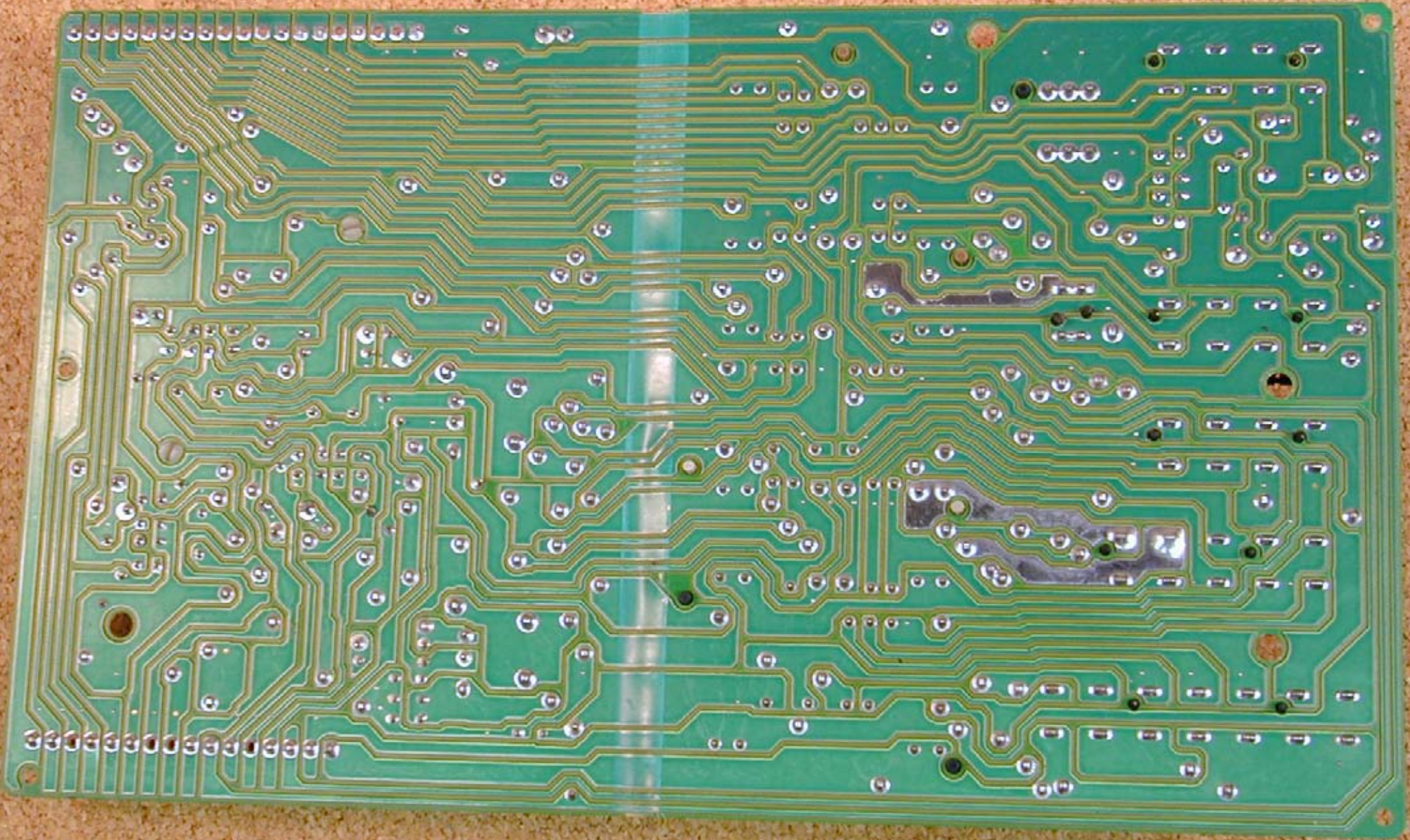
PCB's (bottom) - All models



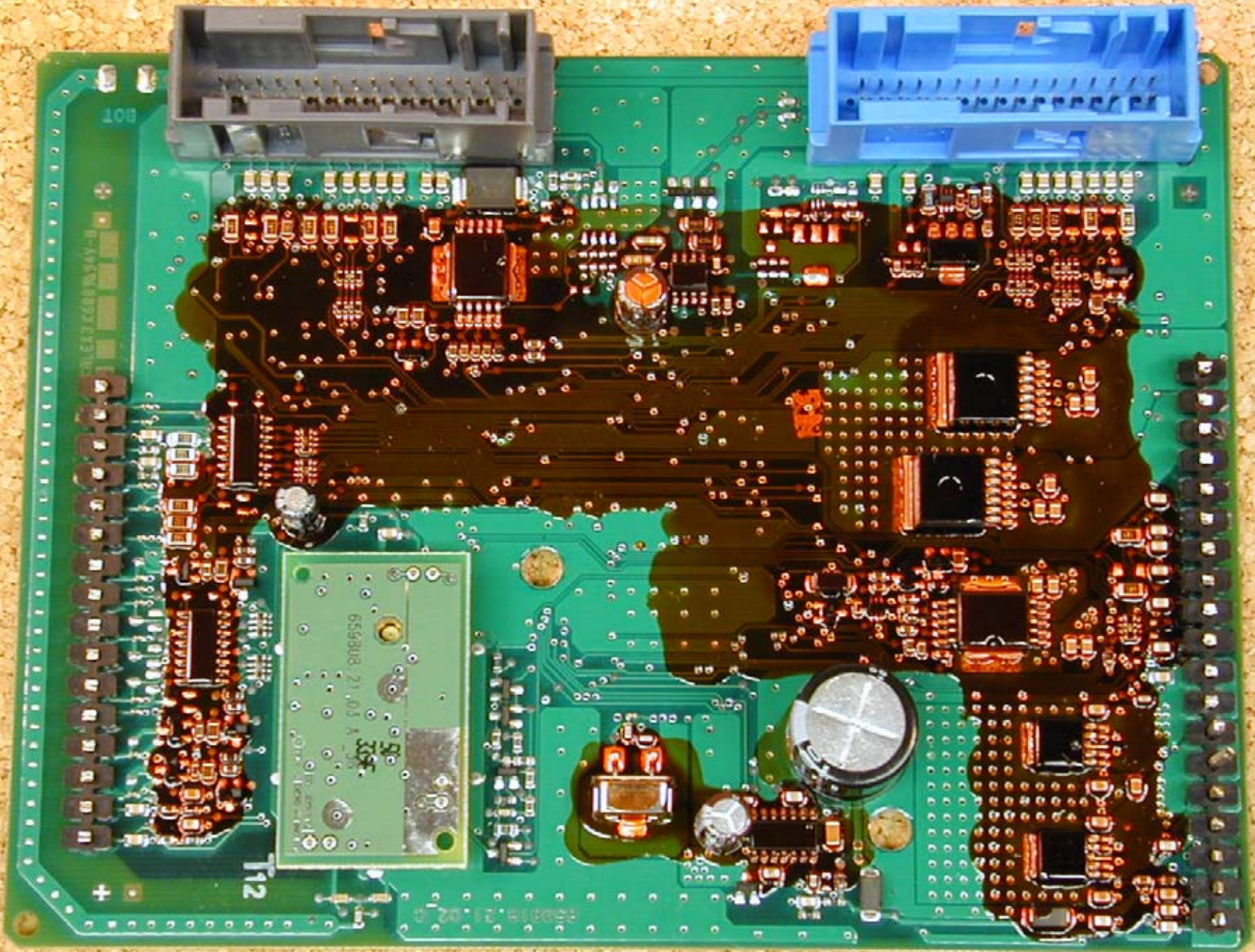
PCB 1 (top)



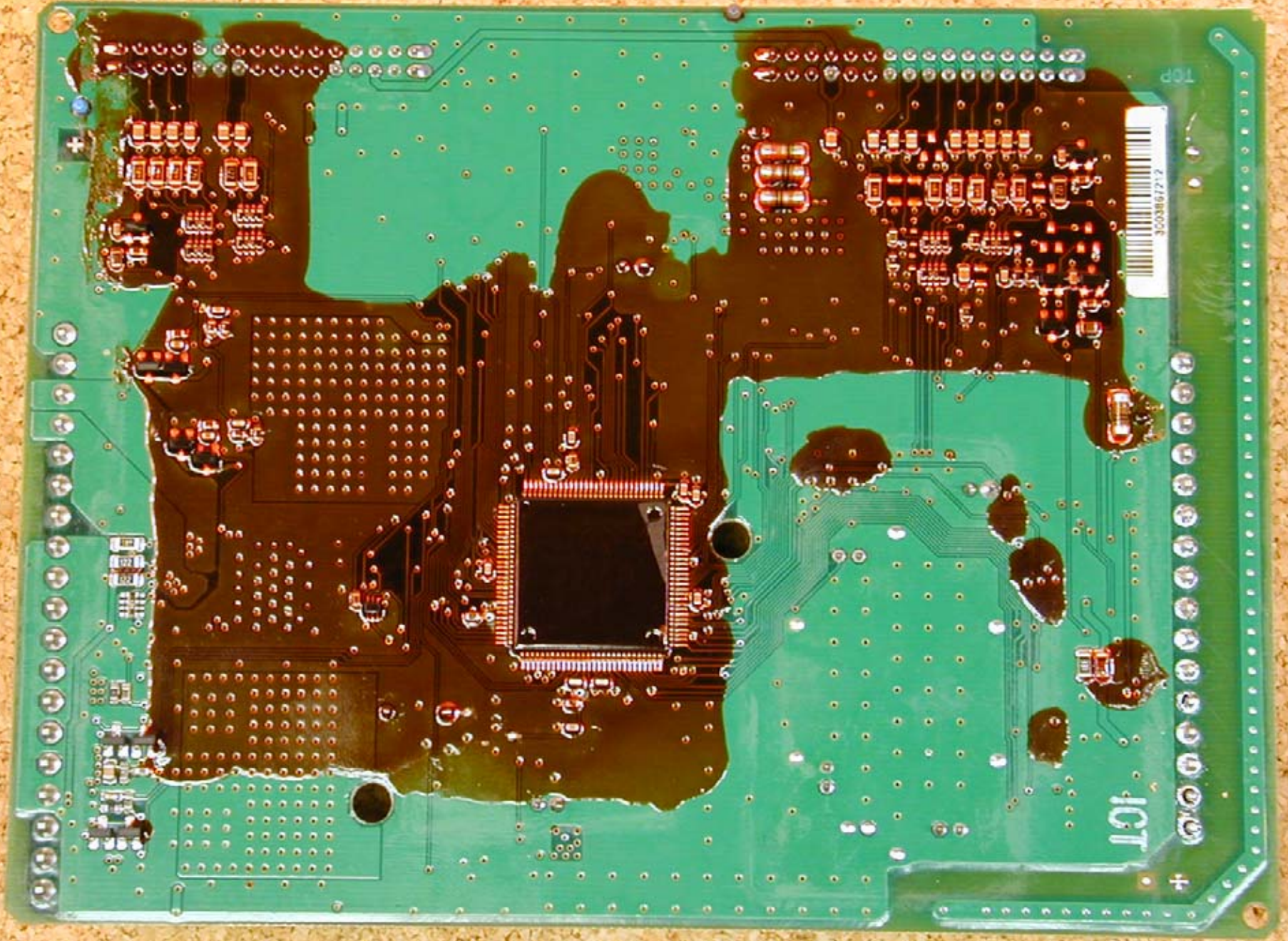
PCB 1 (bottom)



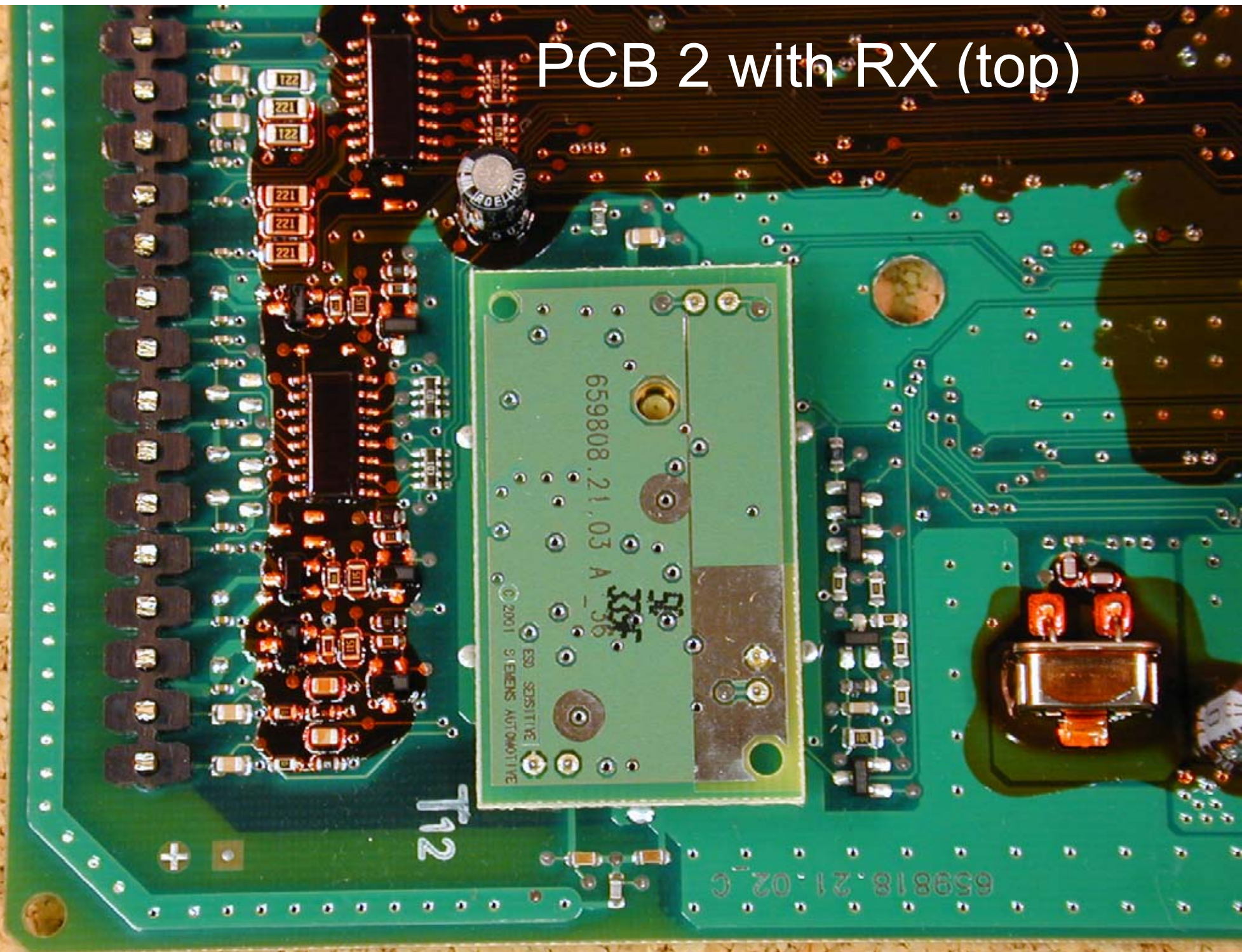
PCB 2 (top)



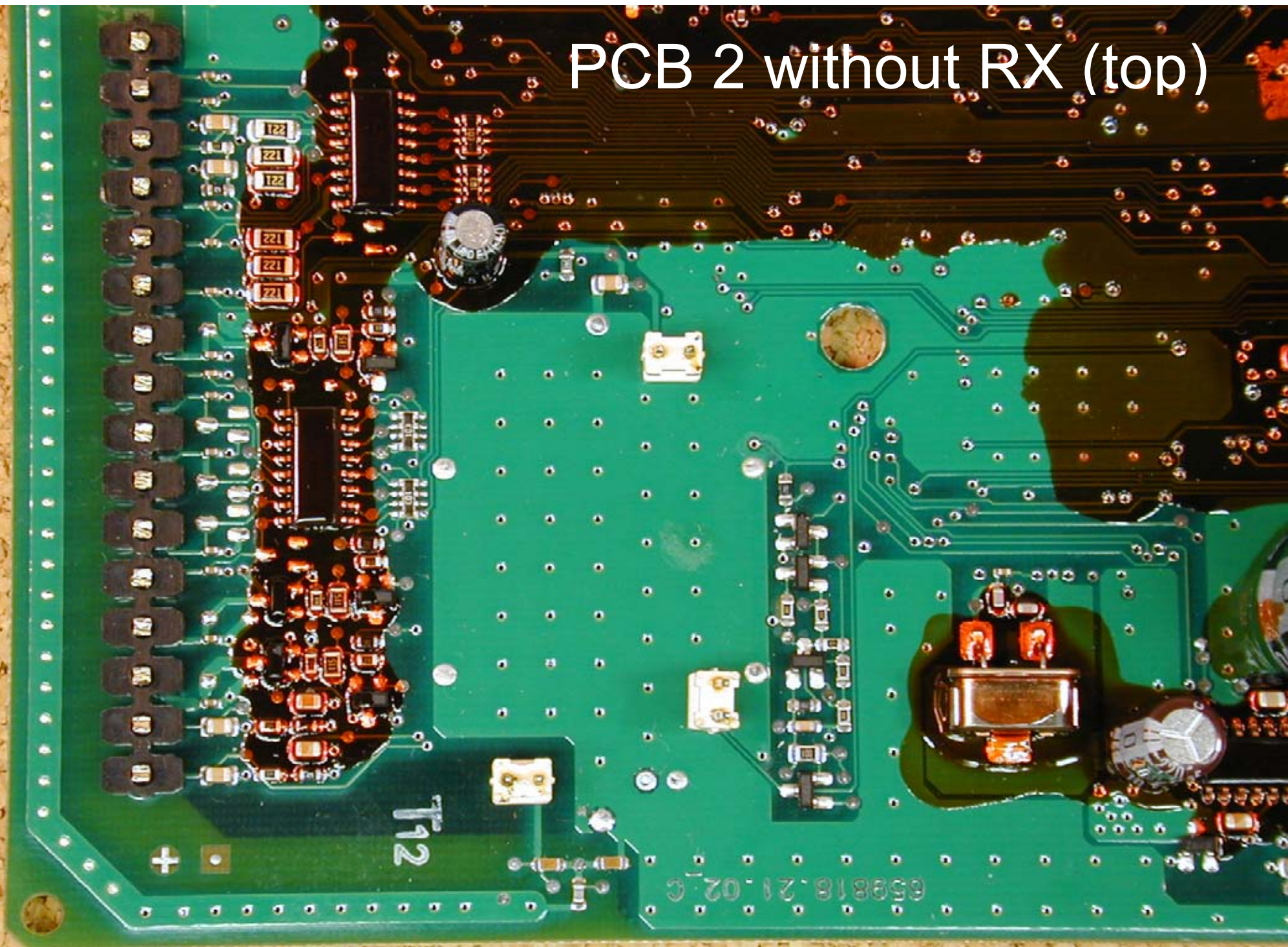
PCB 2 (bottom)



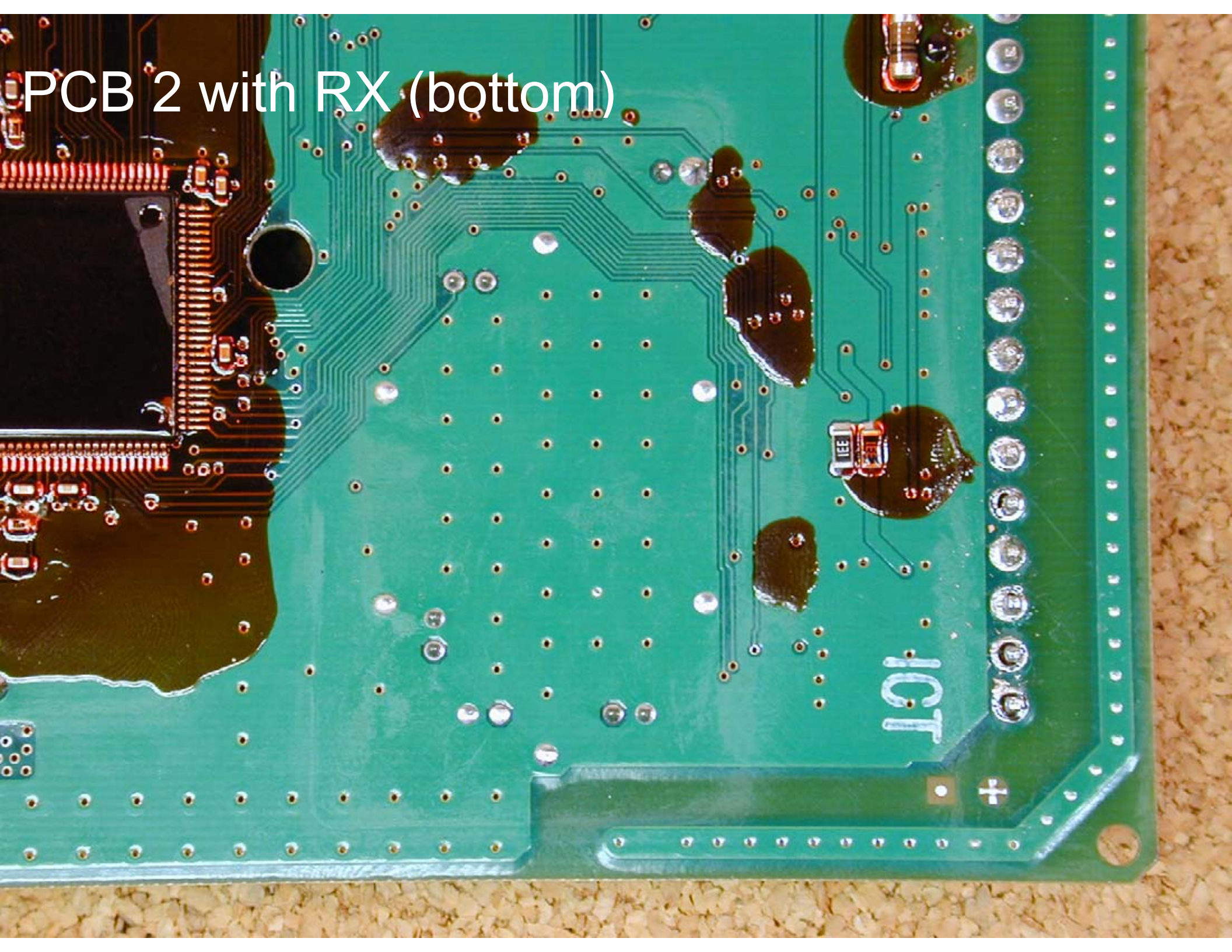
PCB 2 with RX (top)



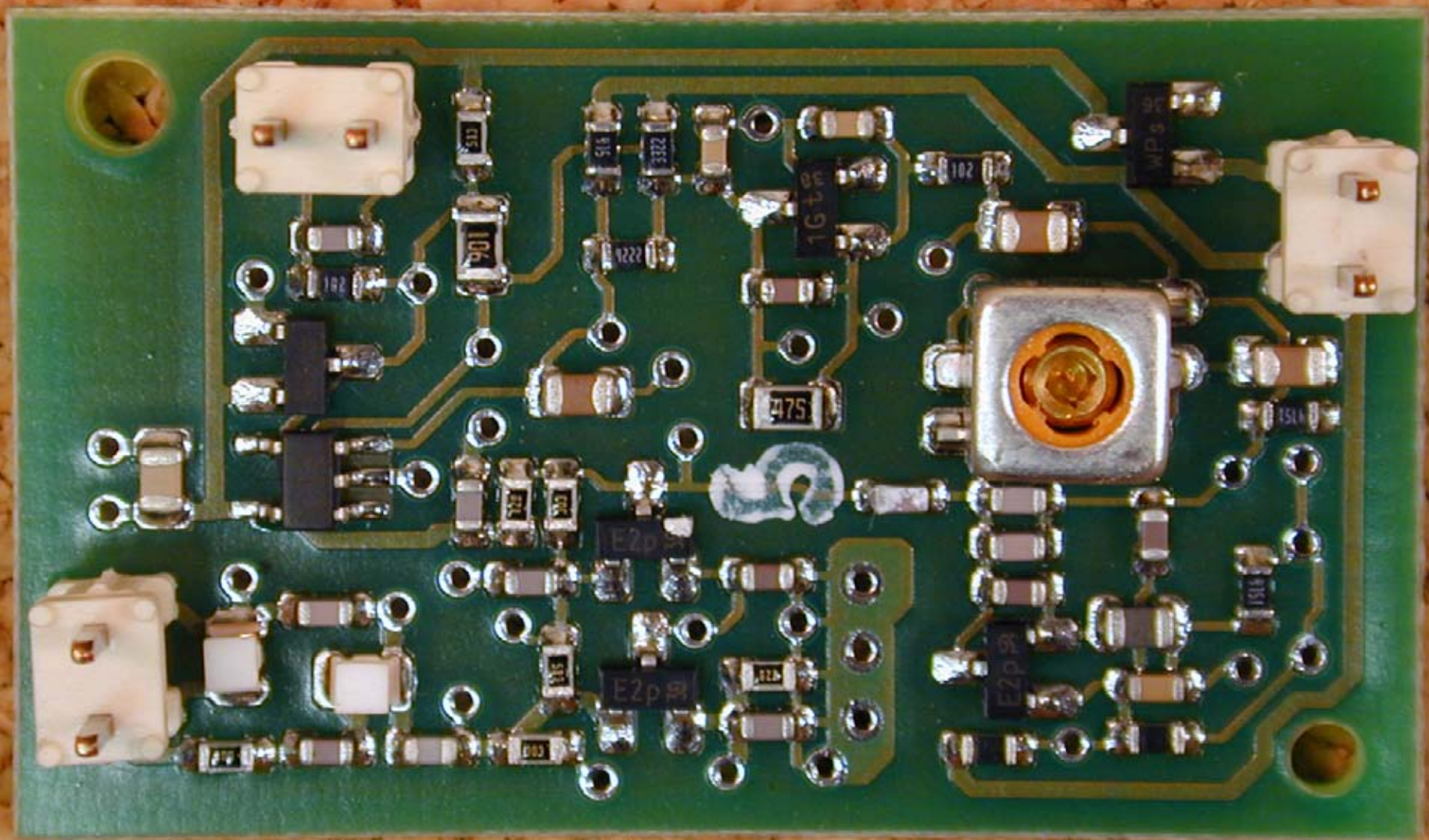
PCB 2 without RX (top)



PCB 2 with RX (bottom)



RX PCB (top)



RX PCB (bottom)

