

DaimlerChrysler SKREEK Block Diagram:

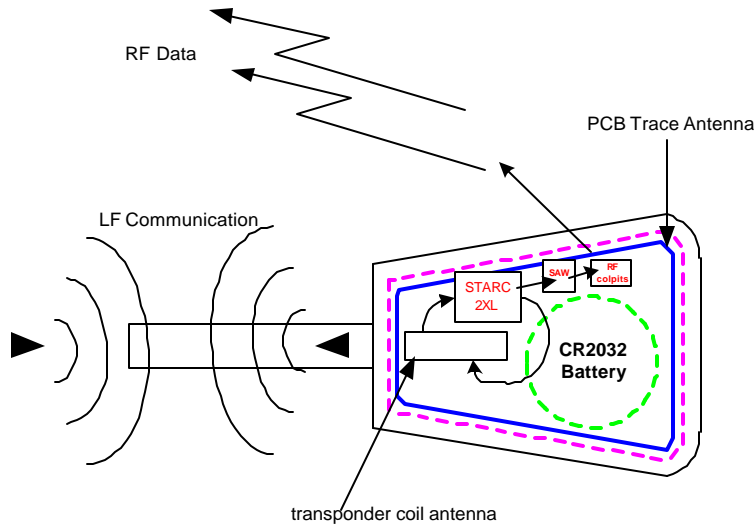
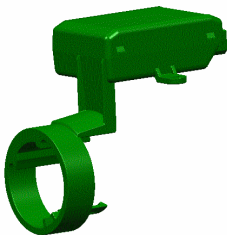


Figure 2. SKREEK Block Diagram

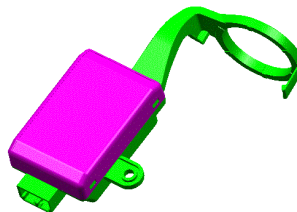
SKREEM Variants:

The products to be certified are the control modules for the DaimlerChrysler SKREES. There are two devices to be approved. One will be for the DaimlerChrysler CS vehicle platform and the other for the RS vehicle platform. The parts vary in form (plastic housing shape or bracket) but function identically and have identical schematics. The devices also have identical printed circuit boards and LF antenna characteristics. Both modules will use the same FCC and Canada ID Numbers.



CS Housing

Filename: SKREES_IMM RKE TX FCC_IC
Homologation1.doc
Department: AT BE AS



RS Housing

Page 5 of 11

Copyright © by Siemens Automotive Corp.
All rights reserved