

Continental PNs are shown on the following photos instead of the model numbers

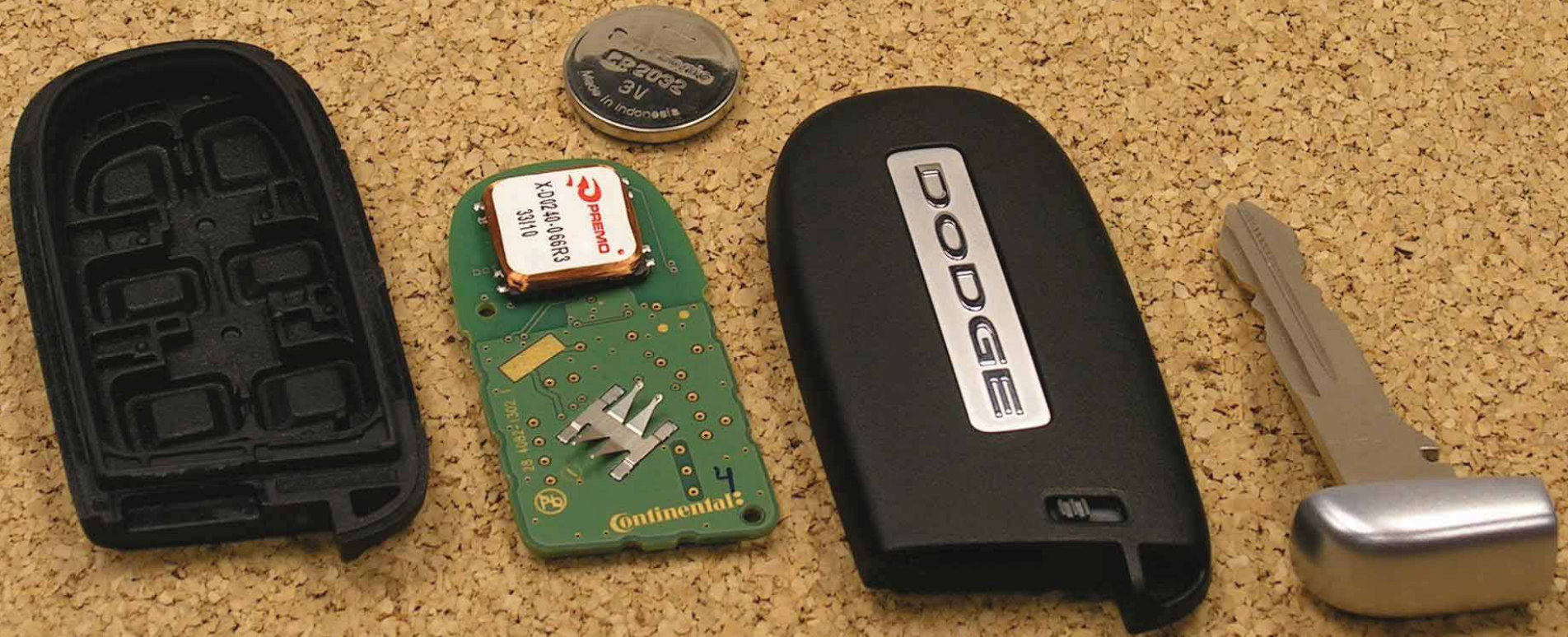
[Make], Model	Continental PN	Notes
[Continental], 05026676AC	28-4138-3200-2-00	5 BTN
[Continental], 68051387AC	28-4138-3300-2-00	4 BTN
[Continental], 56046759AA	28-4138-3400-2-00	5BTN
[Continental], 56046758AA	28-4138-3500-2-00	4 BTN
[Continental], 68060750AC	28-4143-8000-2-00	4 BTN
[Continental], 68066350AB	28-4143-8100-2-00	4 BTN
[Continental], 68066349AB	28-4143-8200-2-00	3 BTN

DUT apart (top)



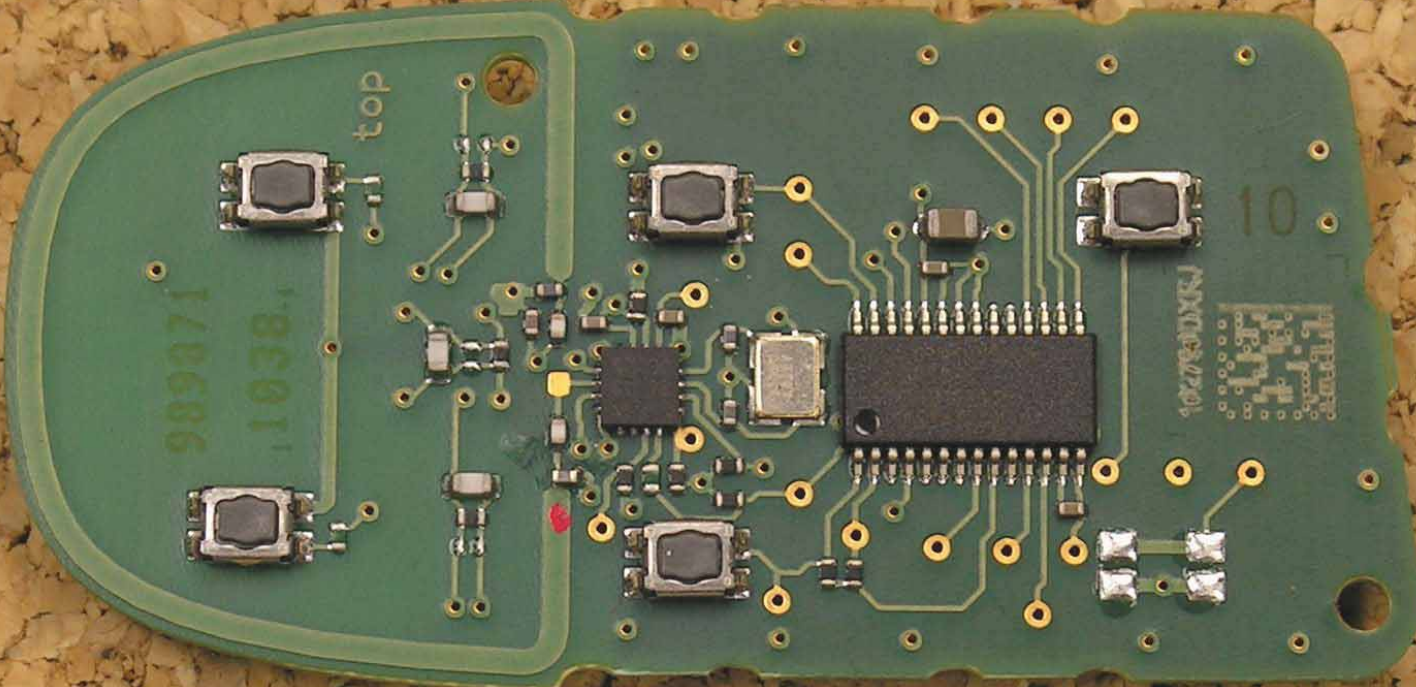
28-4138-3200-2-00

DUT apart (bottom)



28-4138-3200-2-00

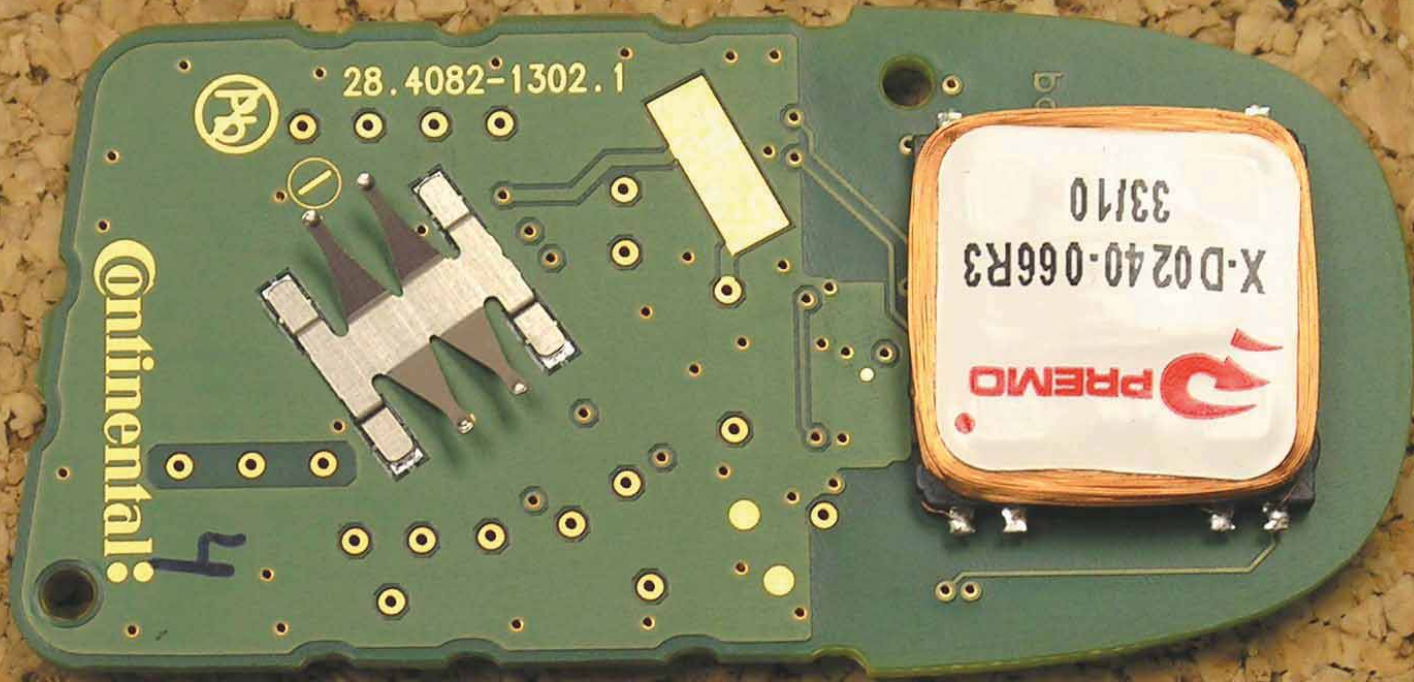
PCB (top)



28-4138-3200-2-00

28-4138-3400-2-00

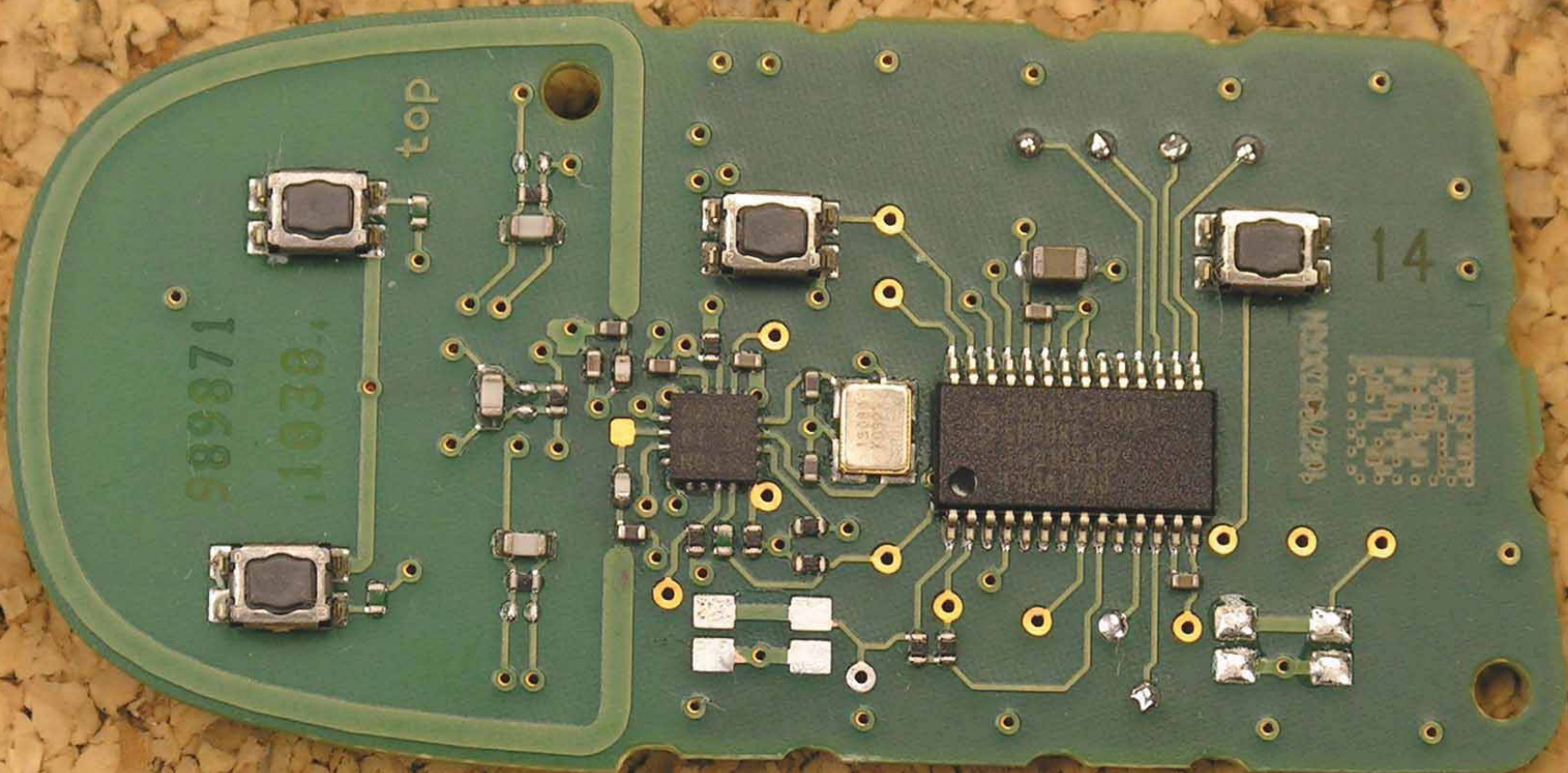
DUT (bottom)



28-4138-3200-2-00

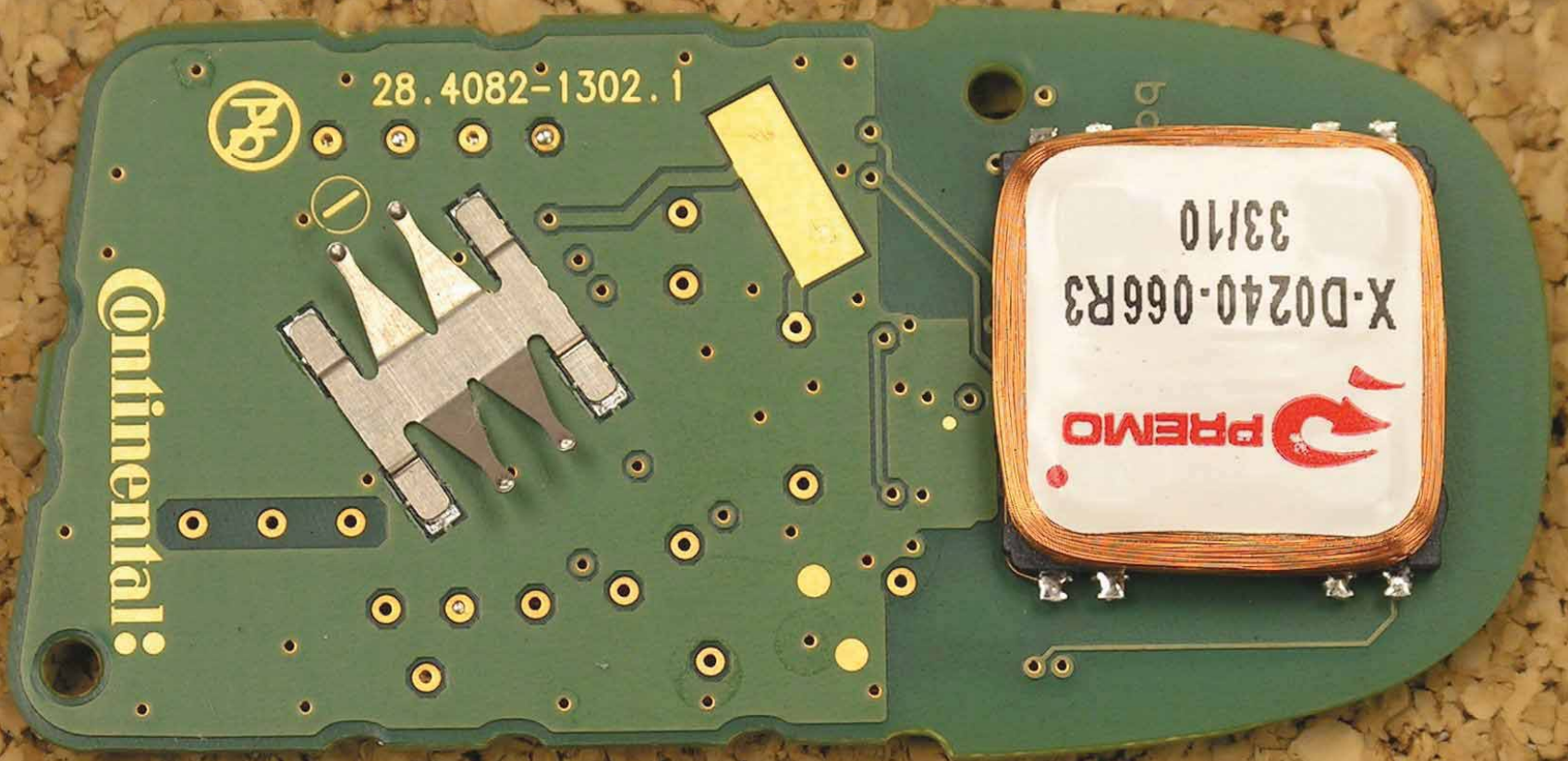
28-4138-3400-2-00

PCB (top)



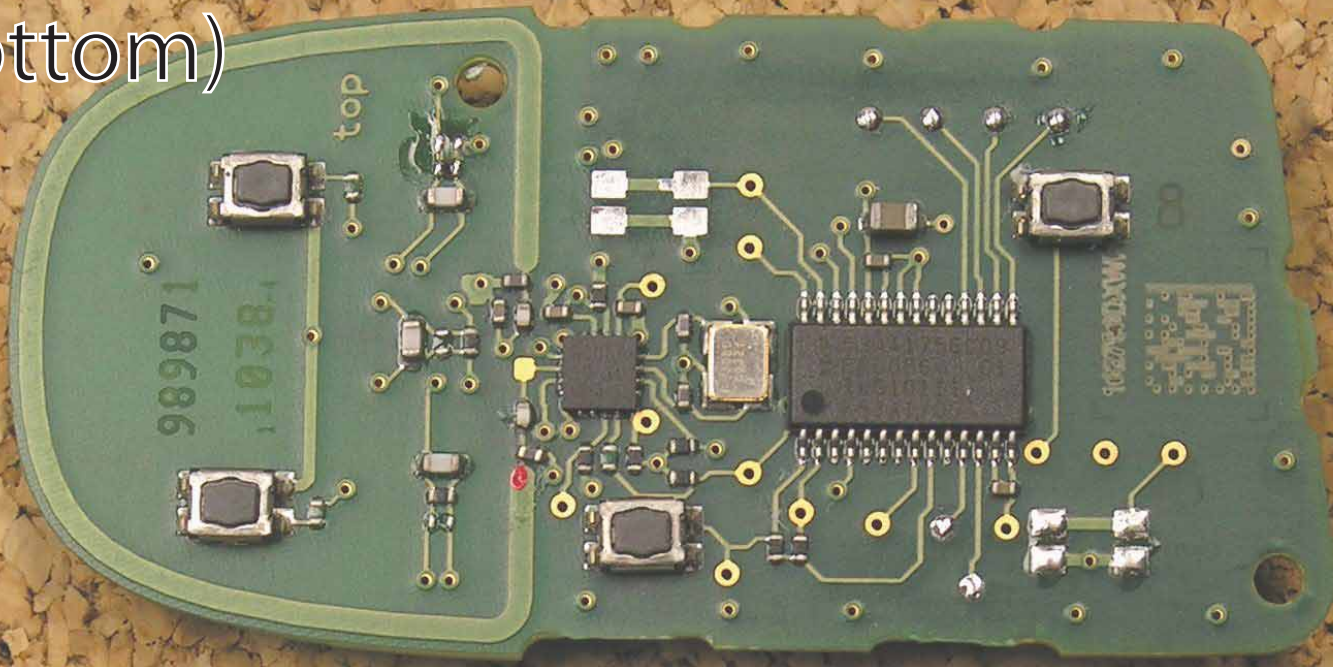
28-4143-8100-2-00

DUT (bottom)



28-4143-8100-2-00

DUT (bottom)

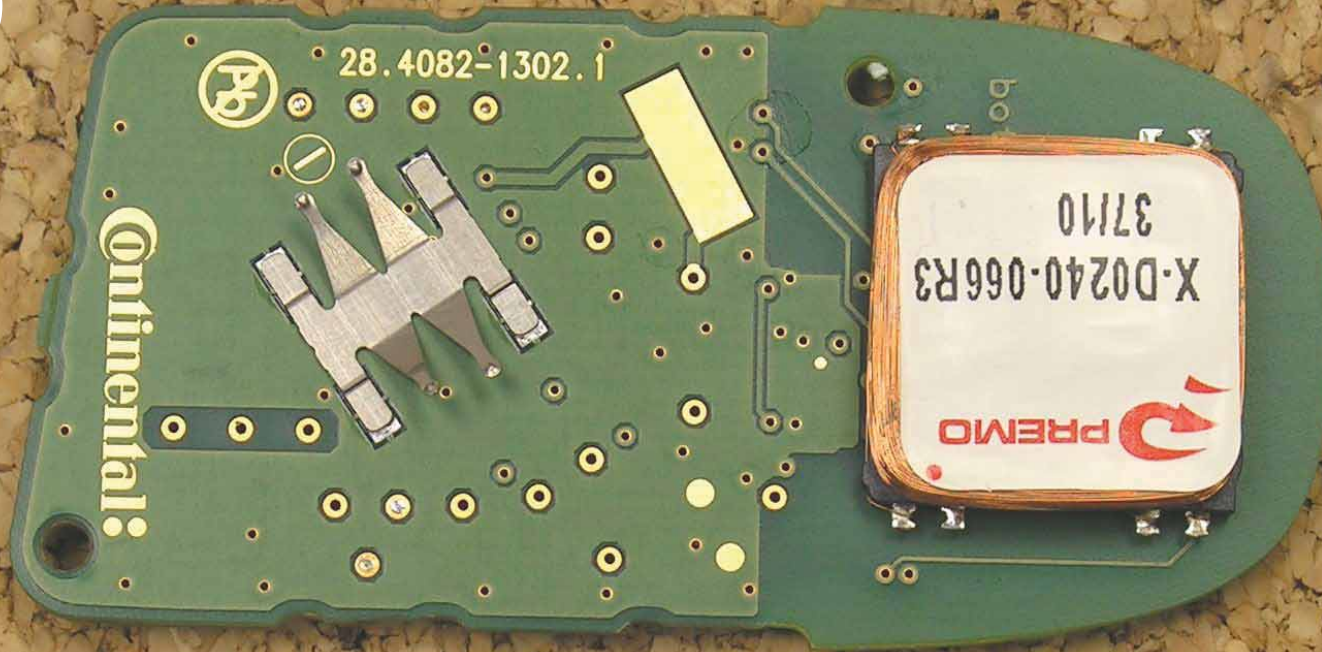


28-4138-3300-2-00

28-4138-3500-2-00

28-4143-8000-2-00

PCB (top)

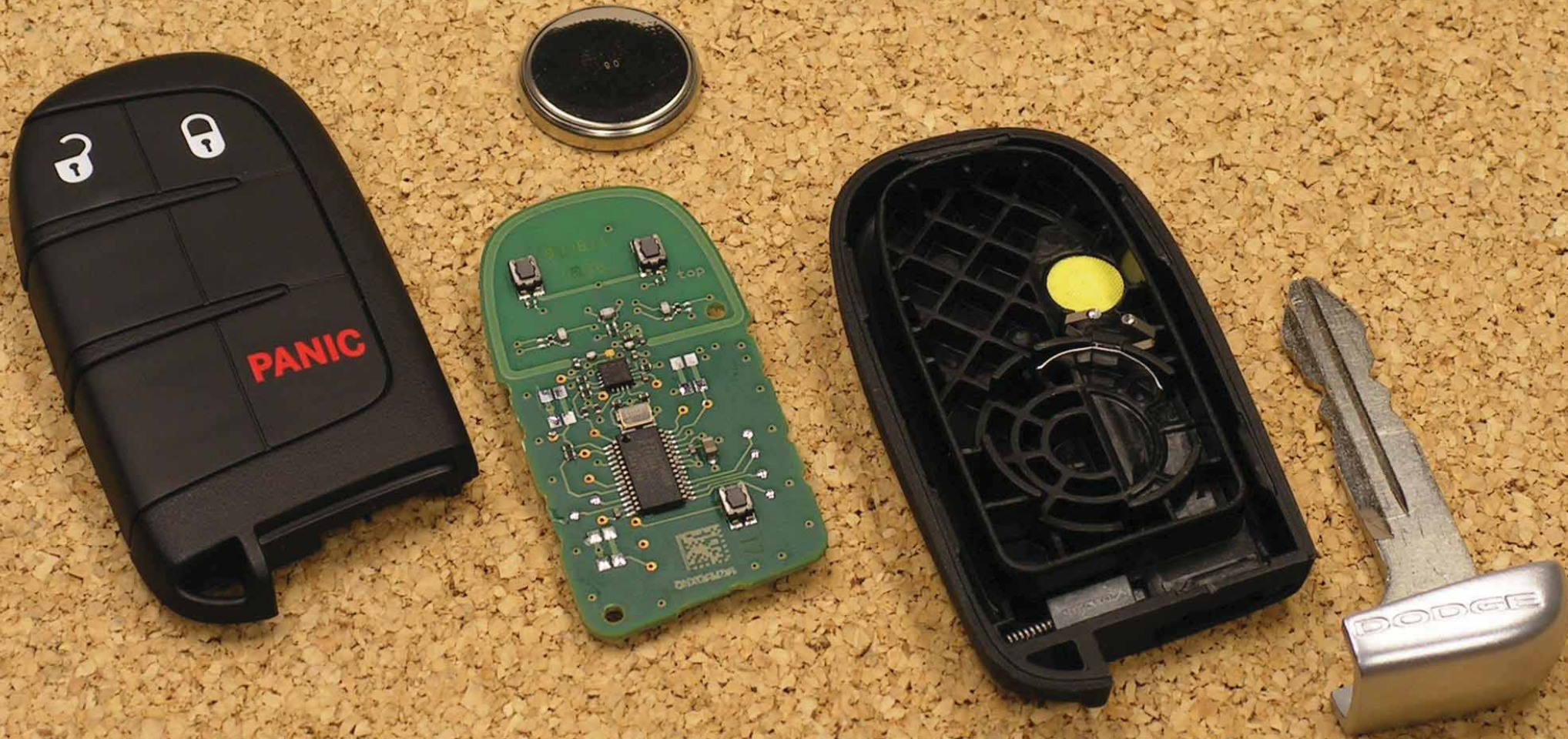


28-4138-3300-2-00

28-4138-3500-2-00

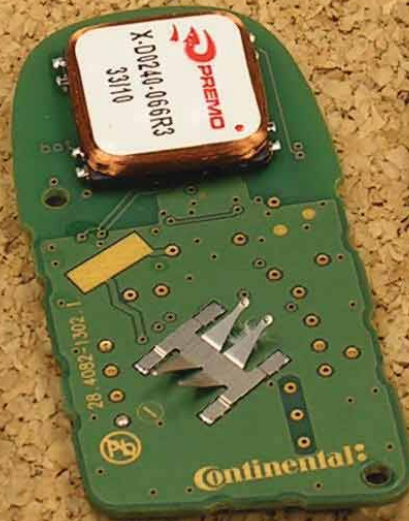
28-4143-8000-2-00

DUT apart (top)



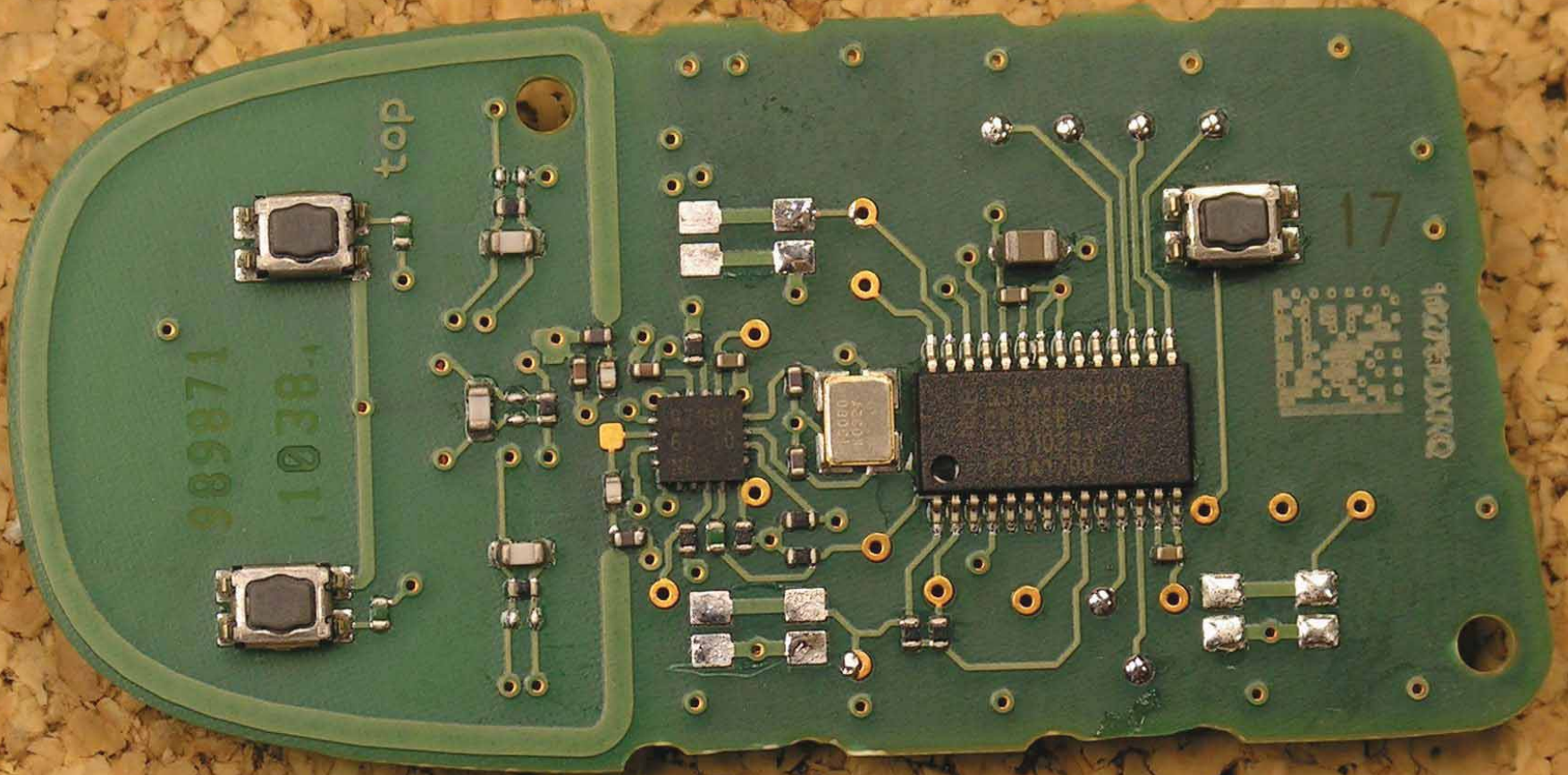
28-4143-8200-2-00

DUT apart (bottom)



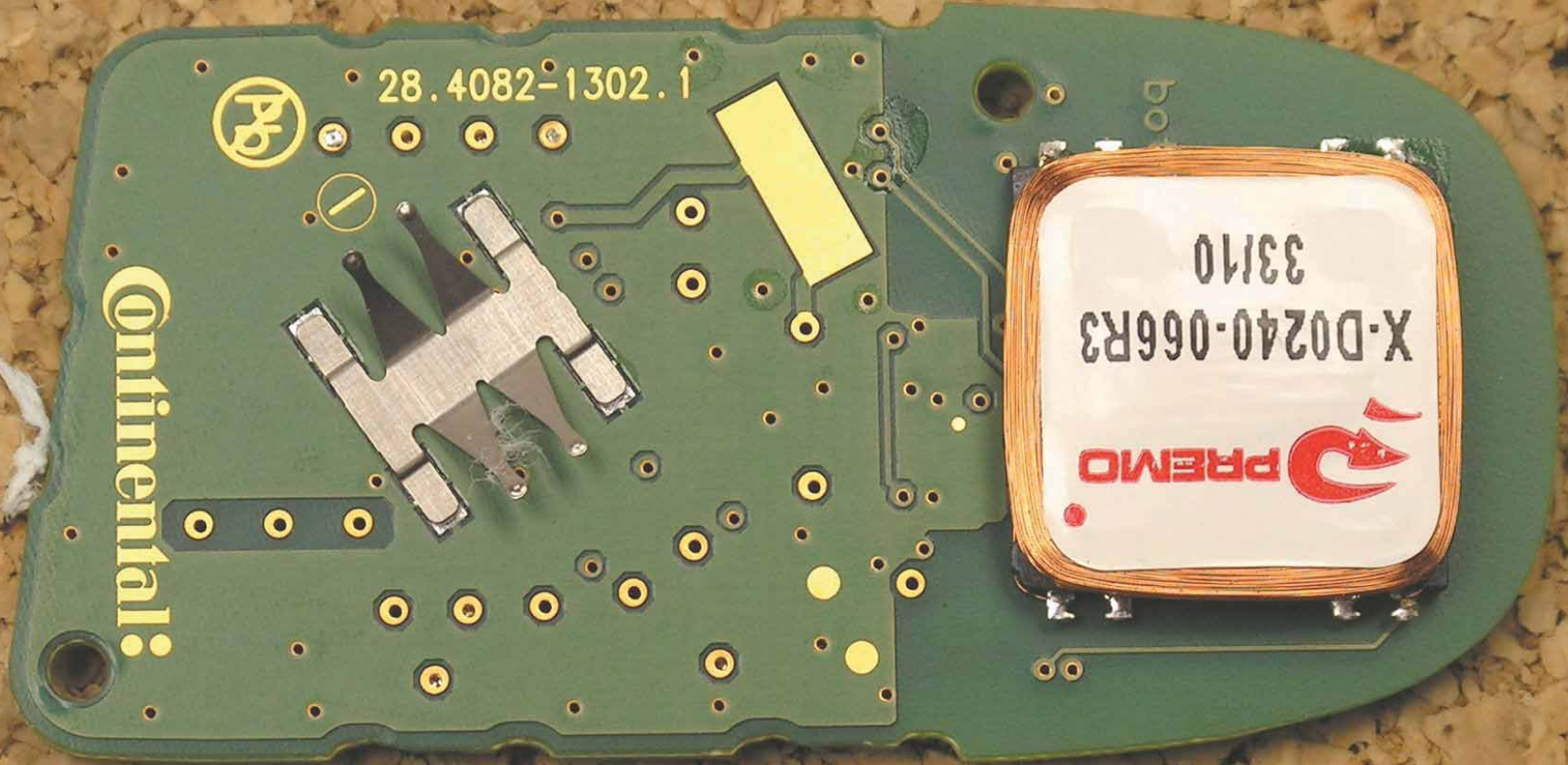
28-4143-8200-2-00

PCB (top)



28-4143-8200-2-00

DUT (bottom)



28-4143-8200-2-00