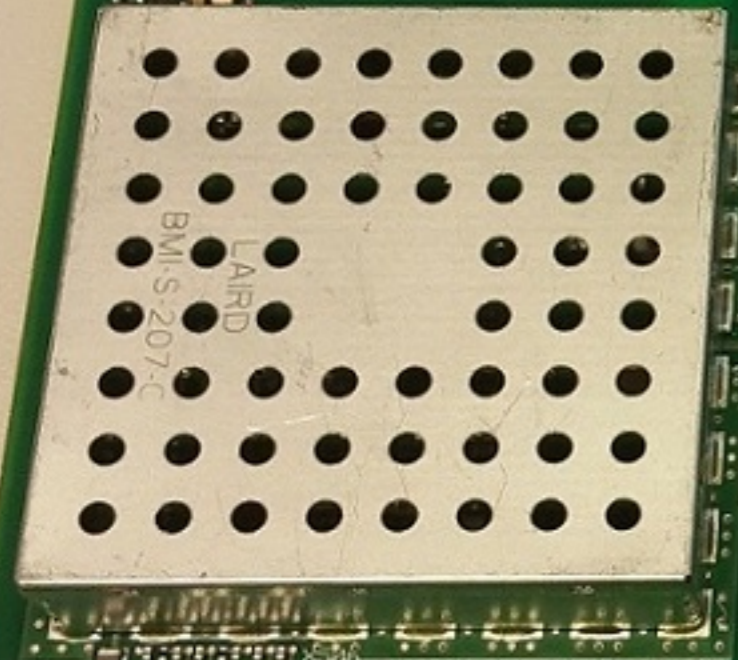


511063 02



2-WIRE  
2-WIRE  
TERMINATION  
BIAS (RX+ /JP)  
BIAS (RX- /DN)  
PUP D0/CLK  
PUP D1/DATA  
PUP CL/LOAD

FW UPGR. MODE  
FACT. DEFAULTS  
FIXED IP

613008 Rev.01  
152600022

ML58 R2

2515



TMP A  
TMP B  
TXB  
RXB  
GND  
IN1+  
IN1-  
IN2+  
IN2-  
IN3+  
IN3-  
D0/CLK  
D1/DATA  
CL/LOAD  
GND  
COM  
NO  
NC  
DC+  
DC-



511063 02



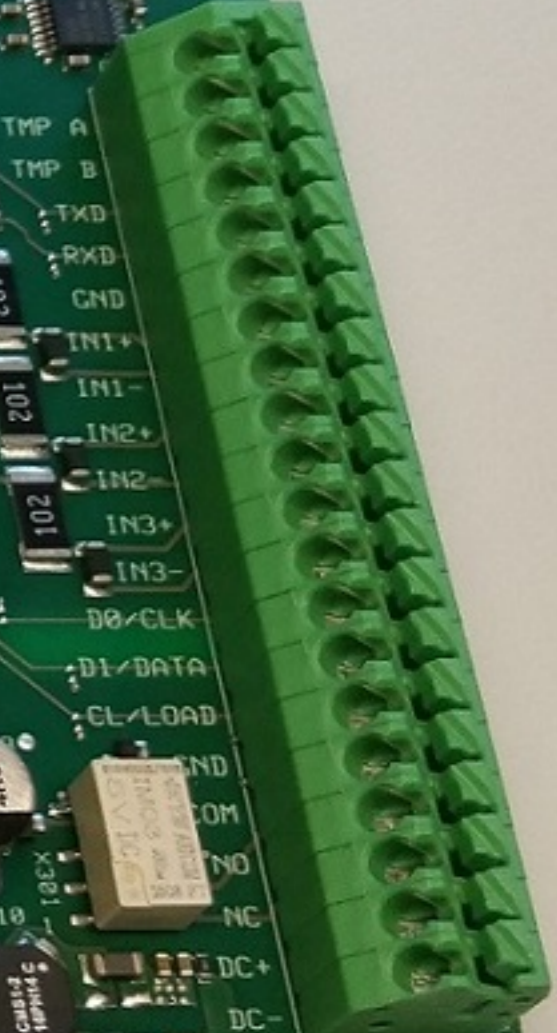
2-WIRE  
2-WIRE  
TERMINATION  
BIAS (RX+ UP)  
BIAS (RX- DN)  
PUP D0/CLK  
PUP D1/DATA  
PUP CL/LOAD

FW UPGR. MODE  
FACT. DEFAULTS  
FIXED IP

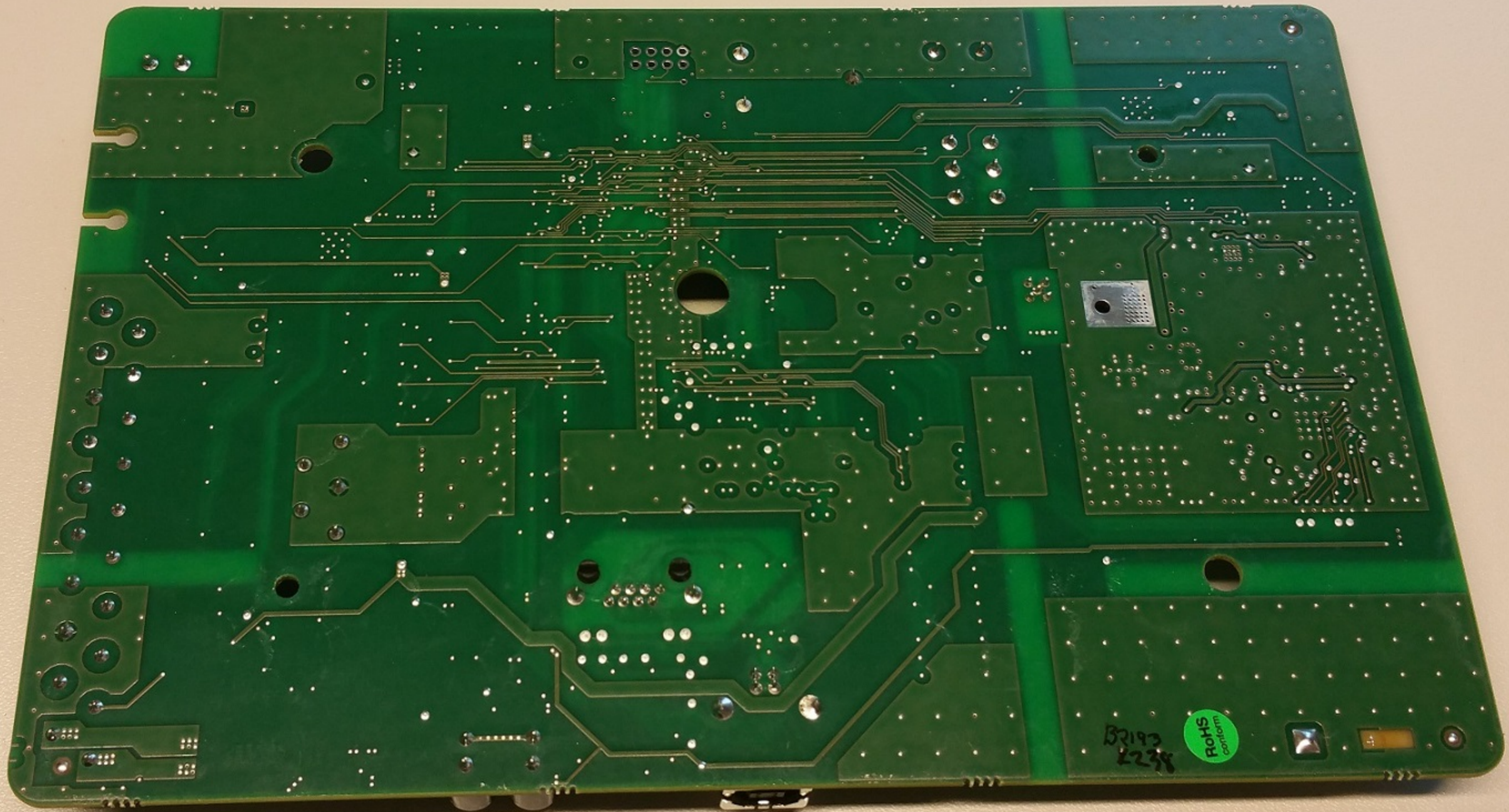
613008 Rev.01  
152600022

ML58 R2

2515







B2193  
2238

RoHS  
conform