

(fig. 4)



**(fig. 5)**

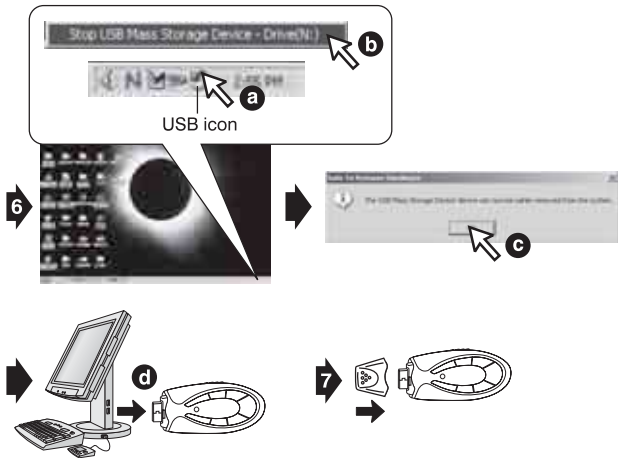
5. Drag/drop or copy/paste the desired files to the player ("removeable disk").
  - You can play MP3, WMA™ files.
  - You can also download photos, data, and other files to the player which allows the unit to function as a portable storage/transfer device.
  - You can add a total of 64 MB to the internal memory (including the hidden "system folder").



**(fig. 6)**

6. Disconnect the unit from your computer.
  - We recommend safely disconnecting any USB device in accordance with your computer's operating system instructions. In Windows98®/WindowsME®, after copying files to the player, wait approximately 5 seconds before unplugging the unit. In Windows2000®/WindowsXP®, click the USB icon in your computer's System Tray and "Stop [the] USB Mass Storage Device".
7. Replace the USB cap on the unit.

(fig. 6)

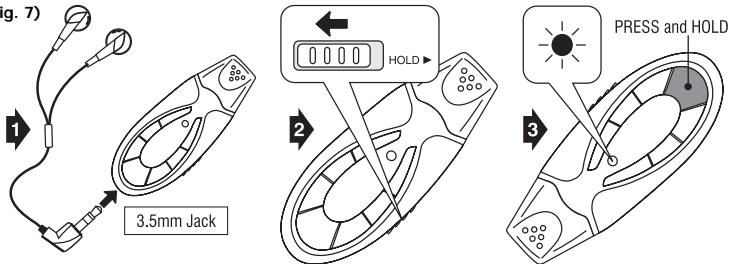


## OPERATION

(fig. 7)

1. Connect the headphones (included) as shown below.
  2. Slide the HOLD switch to the OFF position.
  3. If the power is off, press and hold the POWER ON/PLAY/PAUSE button for approximately 2 seconds.
- The power indicator will illuminate.

(fig. 7)



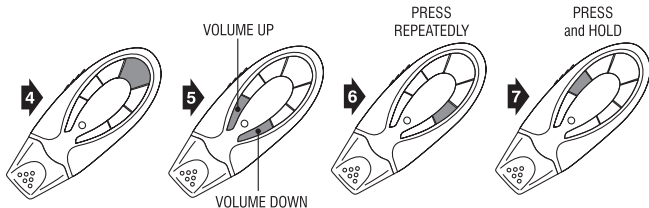
- Set the Volume to a low level before putting on the headphones. Gradually adjust the Volume to a comfortable listening level. Please do not play the volume too loudly for extended periods of time.
- Baje el volumen antes de utilizar los auriculares. Gradualmente ajuste el volumen a un nivel de escucha confortable. Por favor no coloque el volumen muy alto durante largos periodos de tiempo.
- Baissez le volume avant d'utiliser les casques. Réglez le volume graduellement jusqu'à atteindre le niveau d'écoute souhaité. S'il-vous-plaît, ne mettez pas le volume trop fort pendant longtemps.

**(fig. 8)**

4. Press the POWER ON/PLAY/PAUSE button to begin playback.
  5. Press the VOLUME +/- buttons to adjust the volume.
  6. Press the EQ button repeatedly to select between 5 preset equalizer settings.
  7. To power off the player, press and hold the POWER OFF/STOP button for approximately 2 seconds.
- Slide the HOLD switch to the ON position to keep the buttons from accidentally being pressed.
  - You will need to slide the HOLD switch to the OFF position to perform any additional functions.



(fig. 8)



PRESS:	TO:
▶   PLAY/PAUSE	Play
▶   PLAY/PAUSE	Pause ( <i>indicator will flash</i> )
▶   PLAY/PAUSE	Return to <b>play</b> ( <i>indicator will no longer flash</i> )
▶▶ SKIP/SEARCH	Skip forward
◀◀ SKIP/SEARCH	Skip backward
■ STOP	Stop play

PRESS & HOLD:	TO:
▶   PLAY/PAUSE	Power on ( <i>indicator will illuminate</i> )
▶▶ SKIP/SEARCH	Search forward
◀◀ SKIP/SEARCH	Search backward
■ STOP	Power off ( <i>indicator will no longer illuminate</i> )

## DELETING SONGS

(fig. 9)

1. Follow steps 1-4 of "Downloading Files to the Player".
  2. Highlight the desired songs to delete in your computer's browser.
  3. Press the "Delete" key on your computer's keyboard.
  4. Follow the steps for safely disconnecting USB devices explained in "Downloading Files to the Player".
- You can also delete a song directly from the player: press and hold the POWER OFF/STOP and POWER ON/PLAY/PAUSE buttons simultaneously while the track is playing.

## TROUBLESHOOTING

PROBLEM	SOLUTION
Unit turned off or locked up.	Reinsert the battery in the correct polarity (+/-) and turn the unit on again.
	Replace the battery with a new one.
	Slide the HOLD switch to the OFF position.
Sound is distorted or weak.	Lower the volume level.
	Replace the battery with a new one.
Songs do not play after dragging/dropping or copying/pasting.	Follow the steps for safely disconnecting USB devices explained in "Downloading Files to the Player".
	Only MP3 and WMA™ files can be played on this player.
Player does not work with Windows98®.	Download the TEC50 device driver from <a href="http://www.gpx.com">www.gpx.com</a> and follow the accompanying instructions for installing.

## RESOLUCIÓN DE PROBLEMAS

PROBLEMA	SOLUCIÓN
La unidad está apagada o cerrada.	Meta de nuevo la pila con la polaridad correcta (+/-) y encienda de nuevo la unidad.
	Reemplace la pila con una nueva.
	Coloque el interruptor HOLD en la posición OFF.
El sonido está distorsionado o débil.	Baje el volumen.
	Reemplace la pila con una nueva.
Las canciones no suenan después de desplazar/soltar o copiar/pegar.	Siga los pasos para desconectar correctamente los aparatos USB explicados en la sección "Para Bajar Ficheros a la Unidad".
	Solo se pueden reproducir los ficheros MP3 y WMA™ en esta unidad.
La unidad no funciona con Windows98®.	Baje el programa periférico del aparato TEC50 desde <a href="http://www.gpx.com">www.gpx.com</a> y siga las instrucciones de instalación que le acompañan.

## EN CAS DE PROBLÈMES

PROBLÈME	SOLUTION
L' appareil est éteint ou fermé.	Insérez la pile avec la polarité correcte (+/-) et allumez l' appareil encore.
	Remplacez la pile pour une neuve.
	Réglez l' interrupteur HOLD sur OFF.
Le son est déformé ou faible.	Baissez le volume.
	Remplacez la pile pour une neuve.
Les Chansons ne jouent plus après glisser/déposer ou copier/afficher.	Suivez les points pour débrancher correctement les appareils USB expliqués dans la section "Pour Télécharger des Fichiers à l' Appareil".
	Vous pouvez lire seulement les fichiers MP3 et WMA™ dans cet appareil.
Lecteur ne fonctionne pas avec Windows98®.	Téléchargez le gestionnaire de périphérique de l' appareil TEC50 de <a href="http://www.gpx.com">www.gpx.com</a> et continuez les instructions d' installation qui l' accompagnent.