



INSTRUCTION MANUAL

TEC50

COPYRIGHT LAW

You must be aware that distributing copies of MP3/WMA™ files without permission of owner is against copyright law. This product is for personal use only. It is a violation of copyright law to download files without permission of the copyright owner or copying CDs or downloading music for sale or other business purposes.

Microsoft, Windows Media and the Windows logos are trademarks or registered trademarks of Microsoft Corporation in the United States and/or other countries. Macintosh and iMac are trademarks of Apple. All other trademarks belong to their respective owner.

This manual is copyrighted. All rights reserved. This manual in whole or part may not be copied, reduced, reproduced or translated by any means, including electronic or mechanical without written approval from GPX, Inc.

NOTE

This device complies with Part 15 of the FCC Rules. Operation is subject to the following two conditions: (1) this device may not cause harmful interference, and (2) this device must accept any interference received, including interference that may cause undesired operation.

WARNING

WARNING: Risk of electric shock - DO NOT OPEN. To reduce the risk of electric shock, do not disassemble the player. No user-serviceable parts are inside. Refer servicing to qualified personnel.

WARNING: Changes or modifications to this unit not expressly approved by the party responsible for compliance could void the user's authority to operate the equipment.

NOTE: This equipment has been tested and found to comply with the limits for a Class B digital device, pursuant to Part 15 of the FCC Rules. These limits are designed to provide reasonable protection against harmful interference in a residential installation. This equipment generates, uses, and can radiate radio frequency energy and, if not installed and used in accordance with the instructions, may cause harmful interference to radio communications. However, there is no guarantee that interference will not occur in a particular installation. If this equipment does cause harmful interference to radio or television reception, which can be determined by turning the equipment off and on, the user is encouraged to try to correct the interference by one or more of the following measures:

- Reorient or relocate the receiving antenna.
- Increase the separation between the equipment and receiver.
- Connect the equipment into an outlet on a circuit different from that to which the receiver is connected.
- Consult the dealer or an experienced radio/TV technician for help.

SYSTEM REQUIREMENTS

- Windows98® or greater
- 16MB RAM or more
- USB port

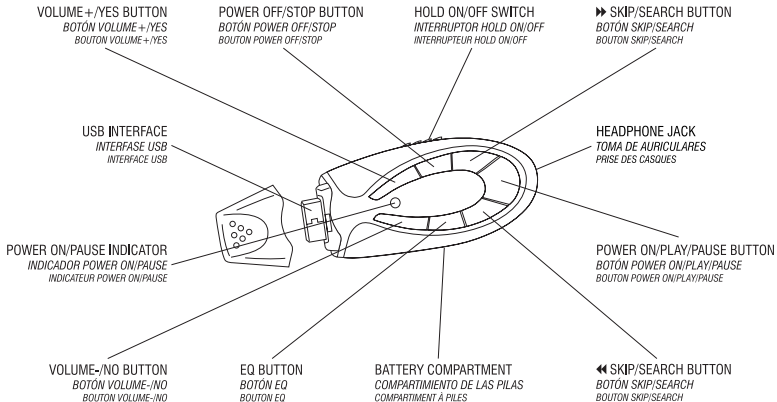
TABLE OF CONTENTS

Unit Features	1
Installing the Battery	2
Internal Memory	2
Special Note to Windows98® Users	3
Downloading Files to the Player....	4
Operation.....	8
Deleting Songs.....	10
Troubleshooting	11

UNIT FEATURES

BOTONES DE LA UNIDAD

BOUTONS DE L' APPAREIL



INSTALLING THE BATTERY

(fig. 1)

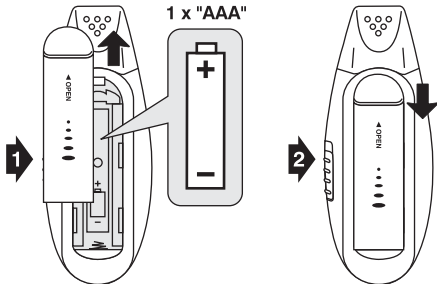
1. Remove the battery cover and install 1 "AAA" size battery.
2. Replace the battery cover.

INTERNAL MEMORY

64MB memory will store approximately 64* minutes of MP3 format or 128* minutes of WMA™ format continuous music.

* Encode Mode: Stereo/Bitrate:
128kbit/s for MP3 (CD Quality) and 64 kbit/s for WMA™ (CD Quality).

(fig. 1)



- To conserve battery life, be sure to power off the player when not in use.
- Replace the battery when the sound becomes unstable or cannot be heard.
- When you are not going to use your player for a long time, remove the battery to prevent damage from battery leakage and corrosion.

- Para conservar la vida de la pila, asegúrese de apagar el reproductor cuando no lo utilice.
- Cambie las pilas cuando el sonido sea irregular o cuando no pueda oírlo.
- Cuando no use su unidad por un periodo de tiempo prolongado, retire las pilas para evitar la fuga de electrolito y la corrosión.

- Pour conserver la vie de la pile, rassurez-vous d'éteindre le lecteur quand vous ne l'utilisez pas.
- Changez les piles quand le son est distordu ou quand il est impossible de l'entendre.
- Si vous n'utilisez pas l'appareil pendant longtemps, enlevez les piles pour éviter des fuites et la corrosion.

SPECIAL NOTE TO WINDOWS98® USERS

(fig. 2)

Windows98® users will need to download a TEC50 device driver from our website before downloading files to the unit. The TEC50 device driver, along with instructions for installing the device driver, are available at www.gpx.com.

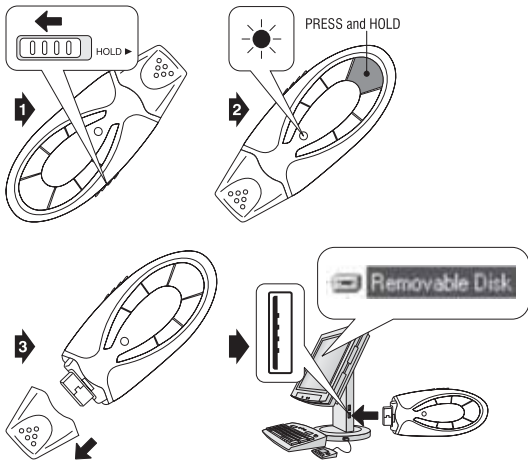
- If you need further assistance, contact us at 314-621-2881 or email technical support at prodinfo@gpx.com

DOWNLOADING FILES TO THE PLAYER

(fig. 3)

1. Slide the HOLD switch to the OFF position.
2. Press and hold the POWER ON/PLAY/PAUSE button for approximately 2 seconds.
 - The power indicator will illuminate.
3. Remove the USB cap and plug the unit into your computer's USB port.
 - Upon connecting to your computer, the player will be shown as a "removeable disk" in your computer's browser.

(fig. 3)



(fig. 4)

4. Use your computer's browser to locate the desired files to download to the player.
 - Do not alter the contents of the "system" folder. This folder will normally be hidden from view.
 - You can also use Windows Media® player to transfer songs. Refer to the help menu in Windows Media® player for more information.