

ELTA ELT new model ELiTe TRANSMITTER Upper case containing all the (three) circuit boards.



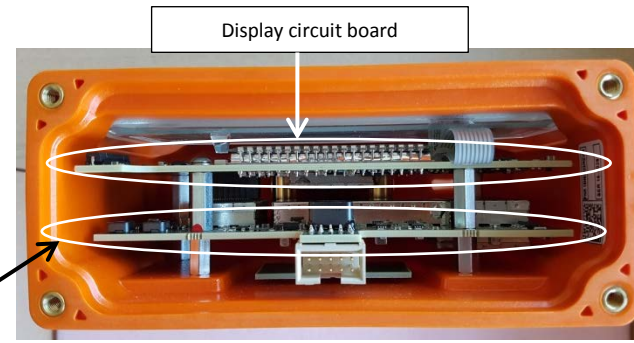
FRONT



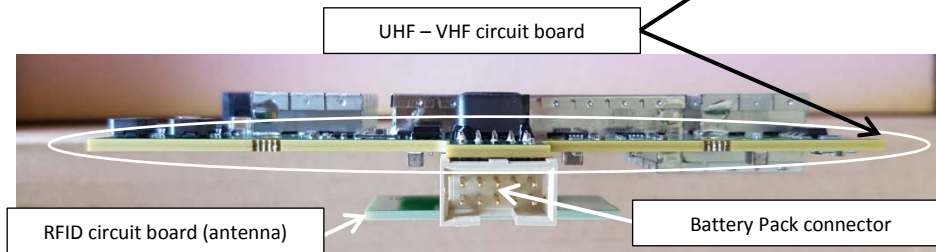
REAR



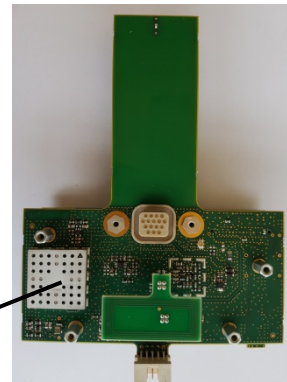
Display removed



internal circuit boards setting

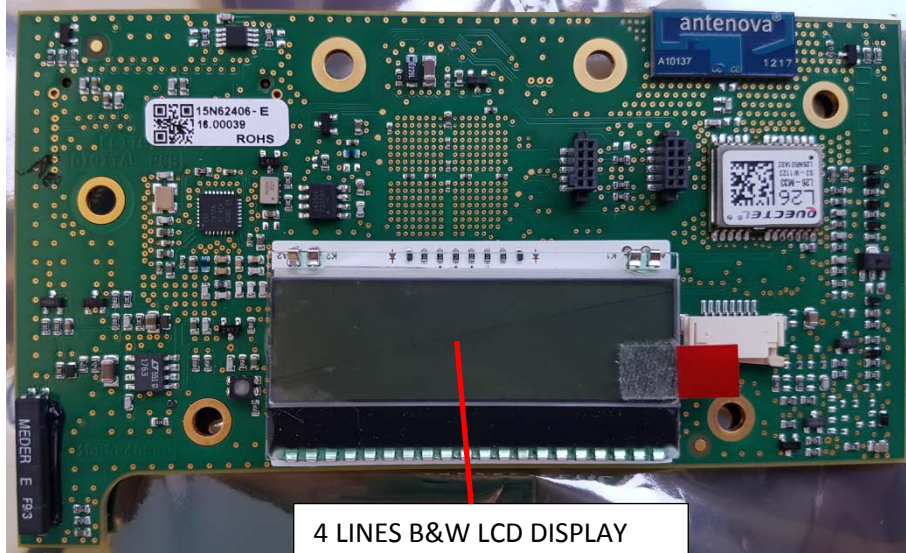


Display circuit board installed on UHF - VHF circuit board



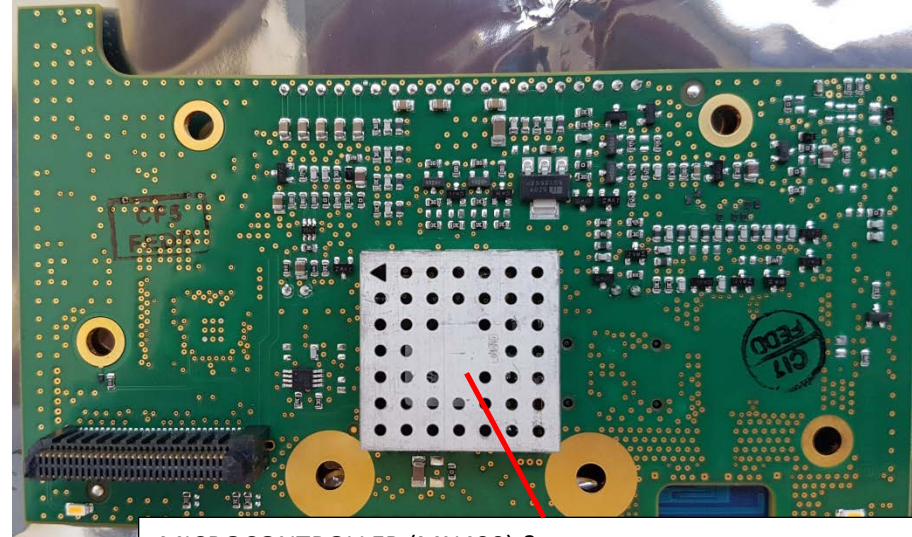
Detailed internal photos

Display Circuit Board (front)

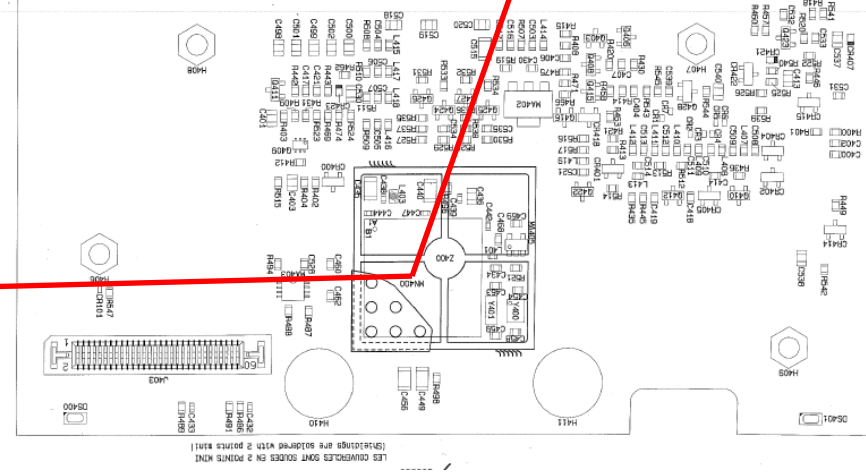
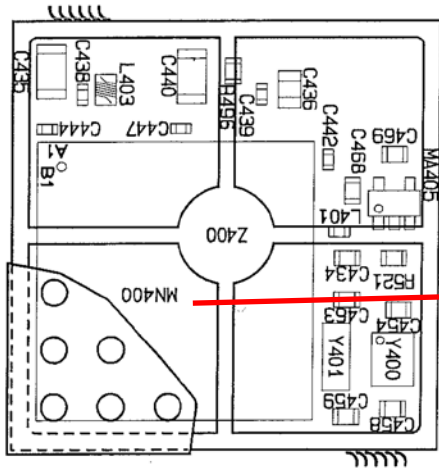


4 LINES B&W LCD DISPLAY

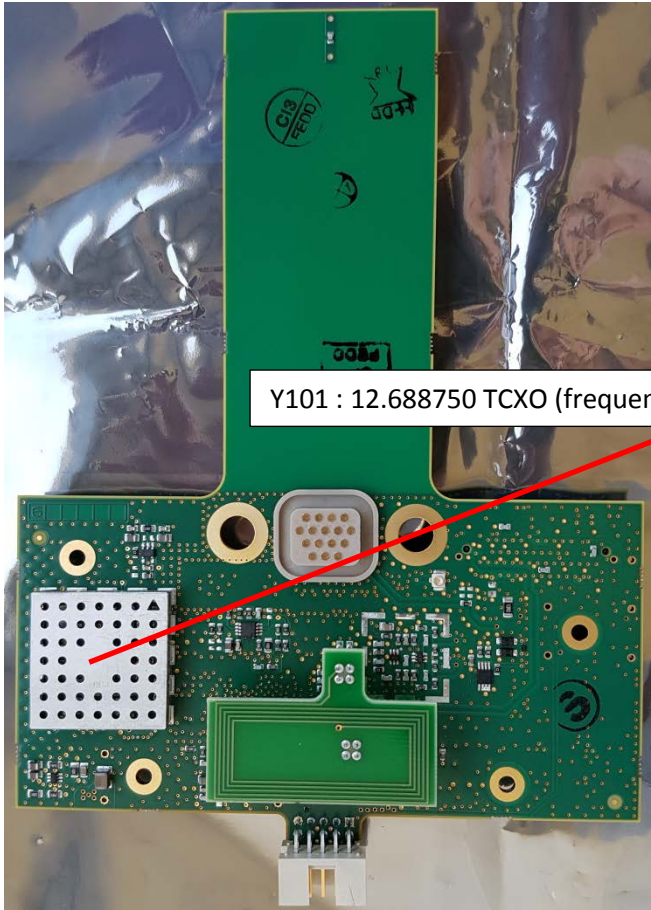
Display Circuit Board (rear)



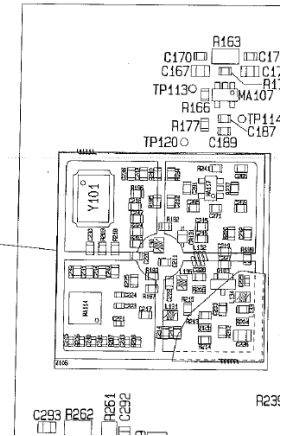
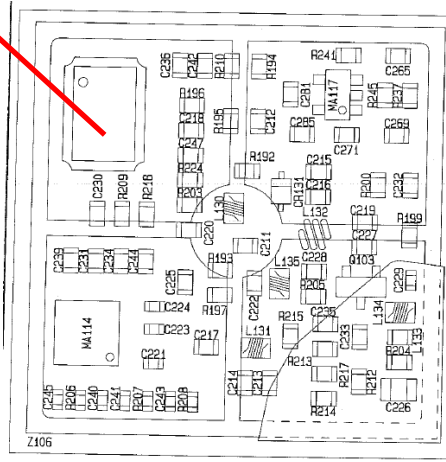
MICROCONTROLLER (MN400) &  
 MICROCONTROLLER XTAL (Y400)  
 Note : Y401 XTAL not mounted



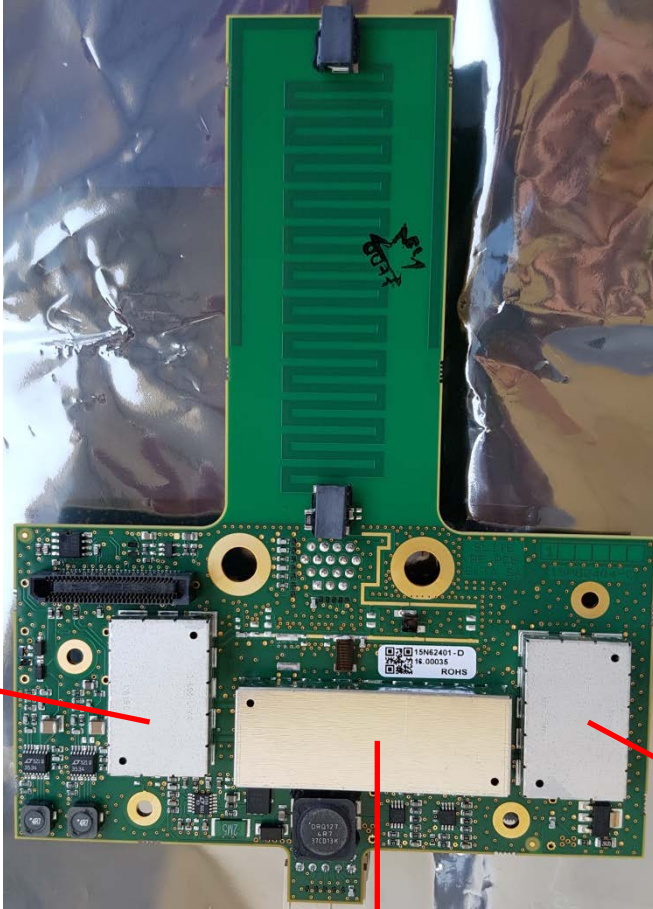
# UHF – VHF Circuit Board (front)



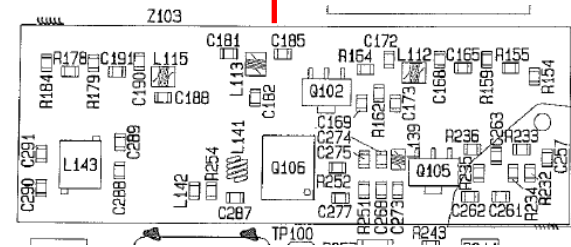
Y101 : 12.688750 TCXO (frequency reference for 406.040 MHz UHF)



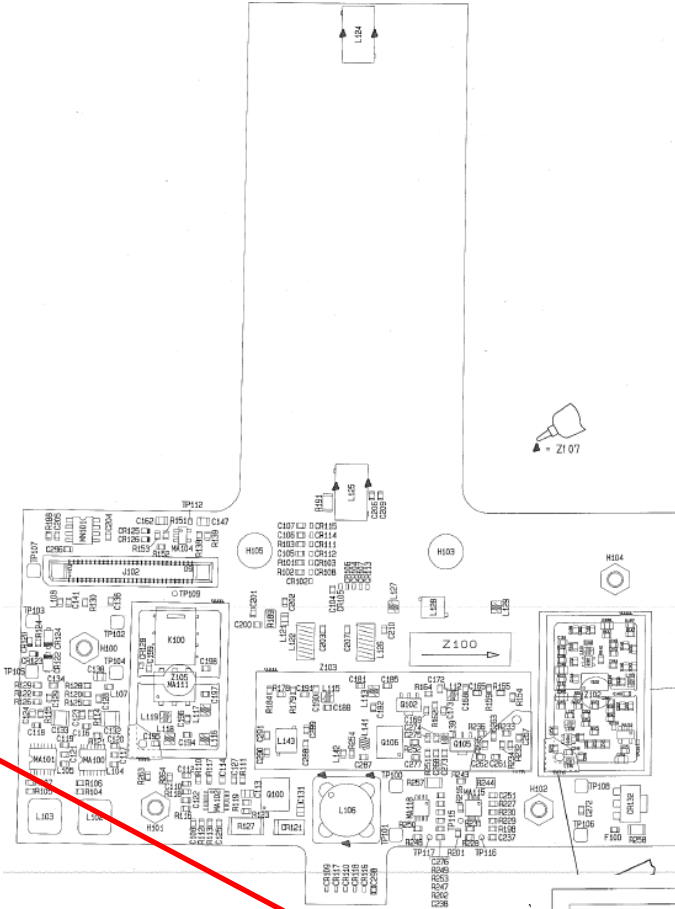
# UHF – VHF Circuit Board (rear)



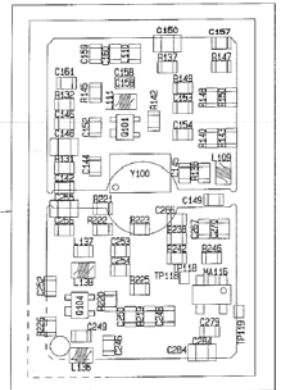
406.040 MHz UHF & 121.5 MHz VHF External / Internal antenna RF switch

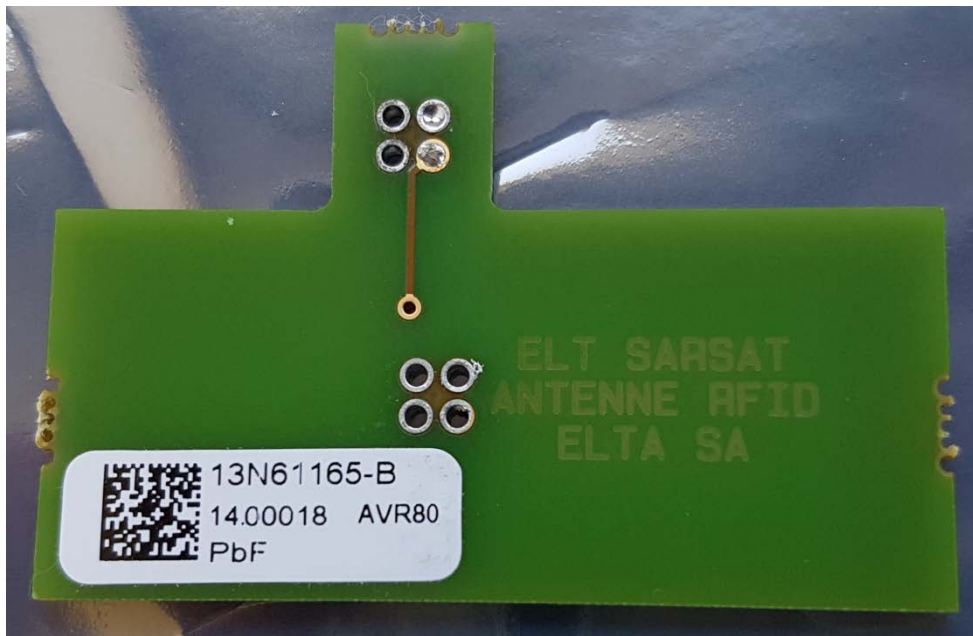


406.040 MHz UHF & 121.5 MHz amplifiers

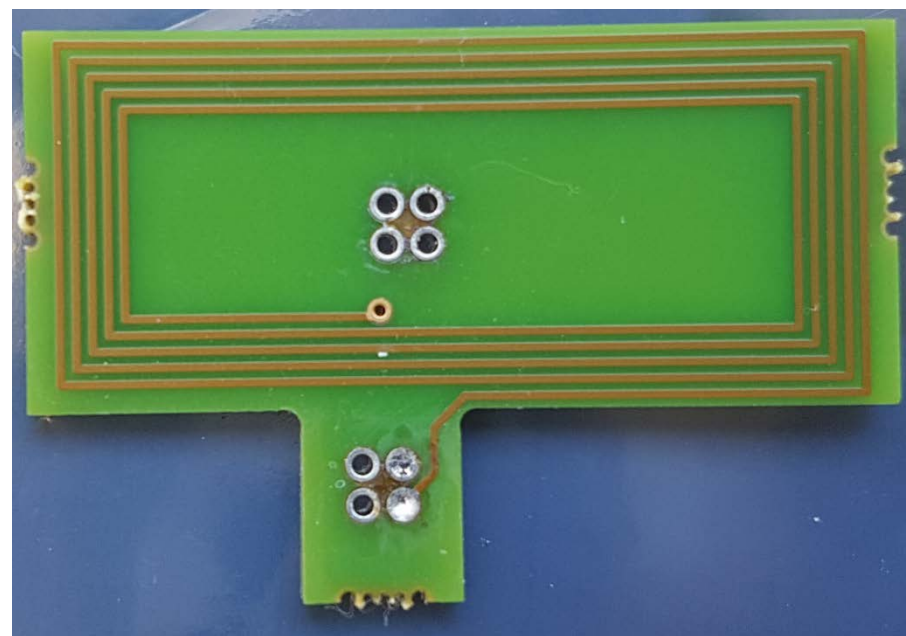


406.040 MHz UHF synthesis





RFID Tag Circuit Board (front)



RFID Tag Circuit Board (rear)