



Electronics for Harsh Environments

FEDERAL COMMUNICATION COMMISSION
445 12TH STREET, SW
WASHINGTON, DC 20554
USA

Blagnac, on December 12th, 2005

SIÈGE SOCIAL :

14, place Marcel Dassault

B.P. 48

31702 BLAGNAC Cedex

France

V/Réf. :
N/Réf : 05B68731
P.J. :

ELTA Grantee Code: LYJ

ELTA contact : C. CRESP, c.cresp@elta.fr

SUBJECT : External photos of our ELT model ADT406 S (Request for Equipment notification)

Tél. : +33 (0)5 34 36 10 00

Fax : +33 (0)5 34 36 10 01

www.elta.fr

Dear Sir,

Please find here under some external photos of our new Emergency Locator Transmitter (ELT) model ADT 406 S.

This model is directly derived from our two previous models ADT406 AF/AP and ADT406 AP part of the ADT406 family.

This equipment, is the Survival model of the ADT406 family.

For this version, on the front panel you will find:

- User accessible control Switch ON-OFF-ARMED, protected against false manipulation (should be pull then move to the correct position). Normal position onboard the A/C is "ARMED" when Automatic activation in water condition is required (when the ELT is floating near a life raft for example). OFF position is for maintenance and/or transport condition. ON is for general manual activation.
- The TEST push button is used to check the ELT. Pushing the TEST button performs the self test of the beacon. The self test report is displayed by the LED.
- 50 Ω TNC RF connector. The three frequency whip antenna (121.5-243-406 MHz) is permanently connected to this access.

CEIS TM, ENERSYS, CITA
et ELFES ELECTRONIQUES
sont des marques
de ELTA S.A.

S.A. au capital de 2 600 000 €

R.C.S Toulouse 92 8 1746

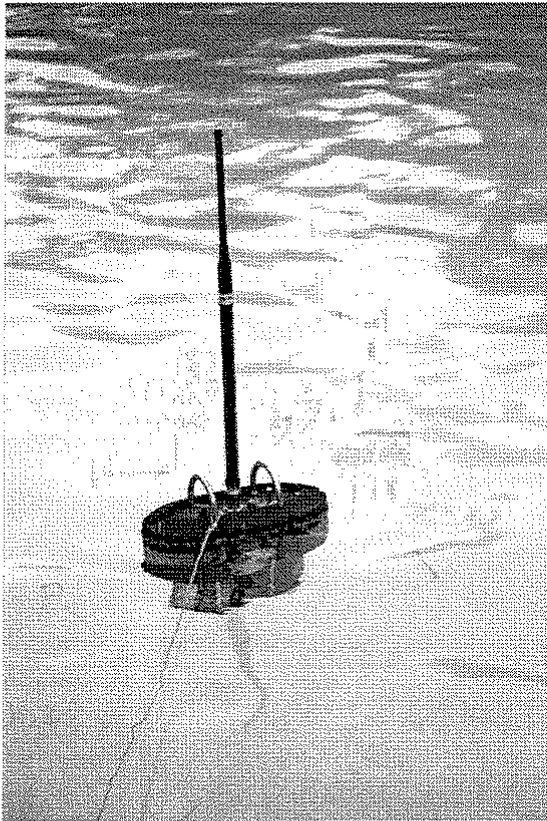
SIREN 388 919 177

Code A.P.E. 322 A

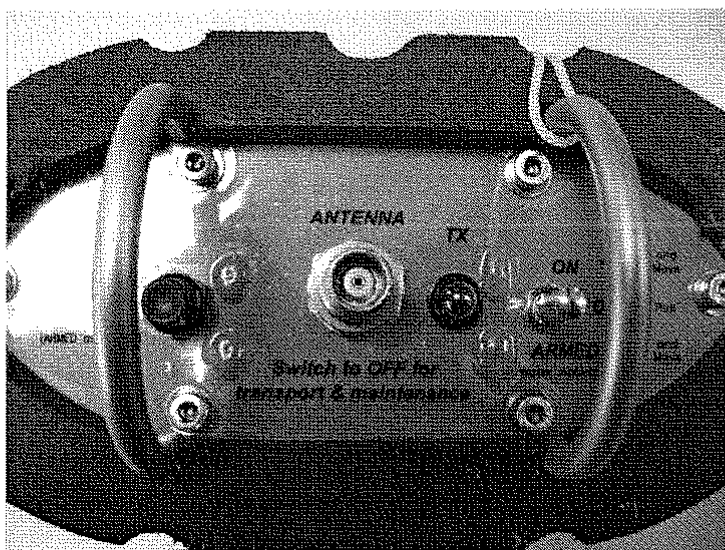
T.V.A. FR 27 388 919 177

The size of the ELT is 225 mm x 185 mm x 94 mm. The weight is 1600 g.

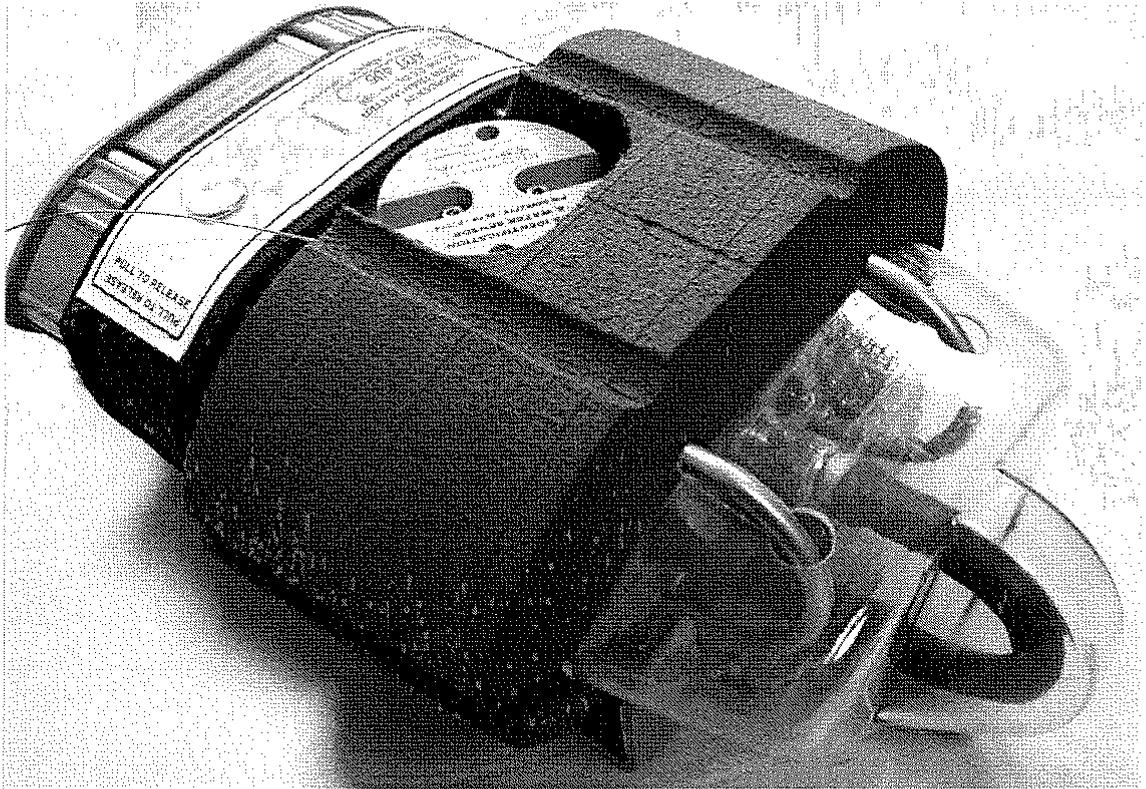
ADT 406 S General view, in floating condition, antenna deployed (Float Free condition) .



ADT 406 front panel (controls) view



ADT 406 S General view with its bracket mount, protective cover and whip antenna



C. CRESP
Product Support Manager

A handwritten signature in black ink, appearing to be "C. Cresp", written over a large, stylized loop.