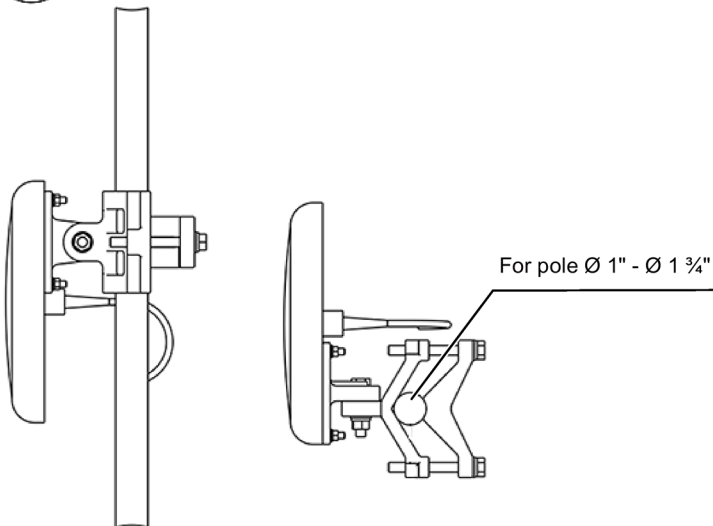
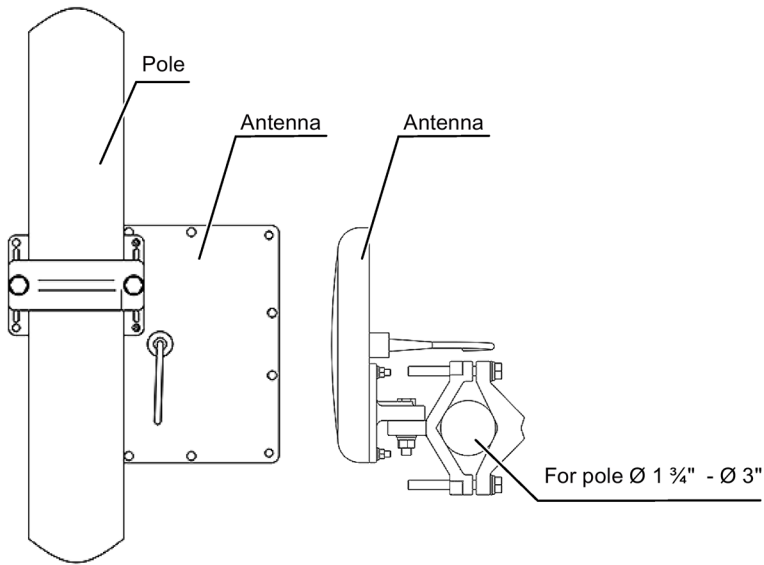


# Mast mounting

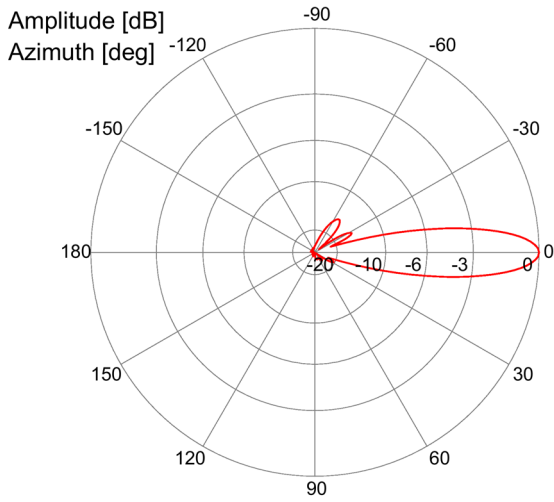
Views from the rear, side and top



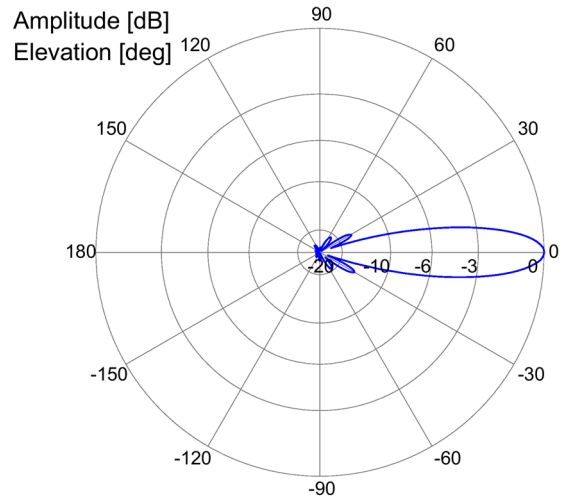
# 7 Field diagrams

## Field diagrams 5600 MHz with horizontal antenna connector

Horizontal

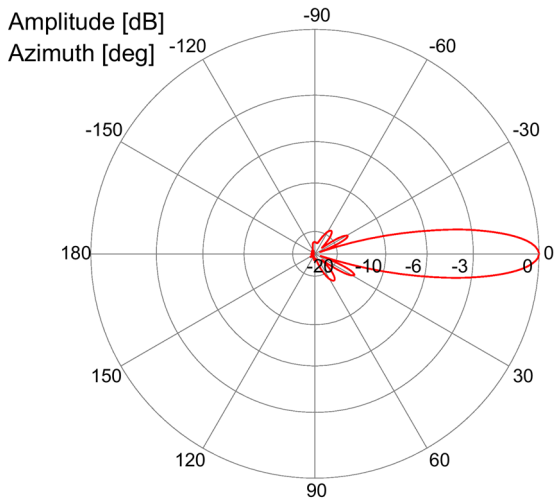


Vertical

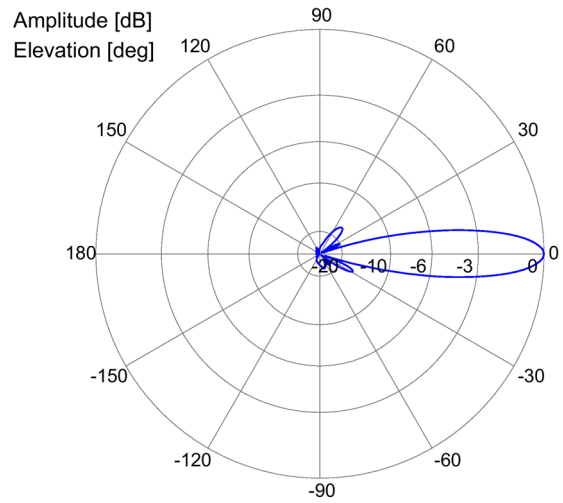


## Field diagrams 5600 MHz with vertical antenna connector

Horizontal

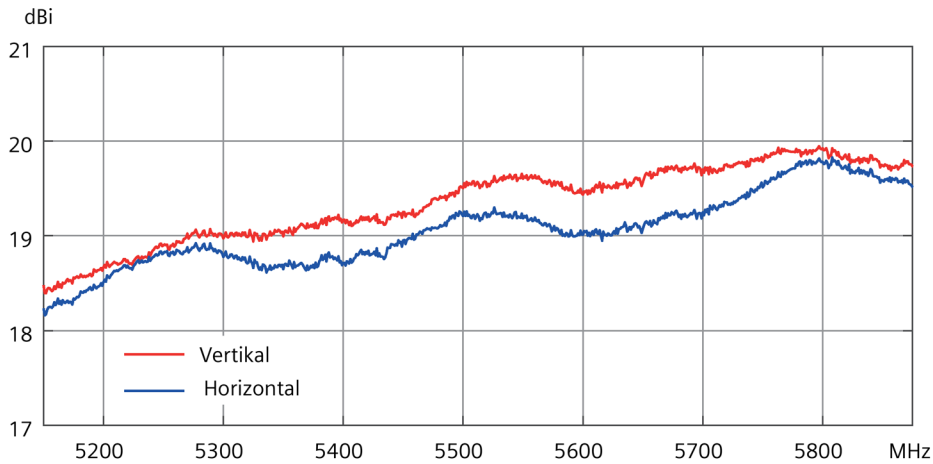


Vertical



## 8 Antenna gain

The diagram shows the typical maximum antenna gain.



---

### Trademarks

All names identified by ® are registered trademarks of Siemens AG. The remaining trademarks in this publication may be trademarks whose use by third parties for their own purposes could violate the rights of the owner.

### Disclaimer of Liability

We have reviewed the contents of this publication to ensure consistency with the hardware and software described. Since variance cannot be precluded entirely, we cannot guarantee full consistency. However, the information in this publication is reviewed regularly and any necessary corrections are included in subsequent editions.

Siemens AG  
Digital Industries  
Postfach 48 48  
90026 NÜRNBERG  
GERMANY

Antenna ANT793-8DJ  
A5E03484059, 08/2023