

Attachment B, IWLAN

Photo documentation of the antennas listed in following table:

Number	Characteristics	Certification name	Plug	Frequency [GHz]	Gain [dBi]
1	Omni	ANT795-6MN	N	2.4 / 5	6 / 8
2	Omni	ANT792-6MN	N	2.4	6
3	Omni	ANT793-6MN	N	5	6
4	Patch	ANT795-6DN	N	2.4 / 5	9 / 9
5	Directed	ANT792-8DN	N	2.4	14
6	Directed	ANT793-8DN	N	5	18
7	Helix	ANT792-4DN	N	2.4-2.485	4
8	λ 5/8	ANT793-4MN	N	5.15-5.875	6
9	R-Coax	IWLAN Rcoax PE 1/2" 2.4 GHz	N	2.4-2.485	0
10	R-Coax	IWLAN Rcoax PE 1/2" 5 GHz	N	5.15-5.875	0
11	Omni	ANT795-4MS	R-SMA	2.4 / 5	4 / 5
12	Omni	ANT795-4MR	R-SMA	2.4 / 5	3 / 5

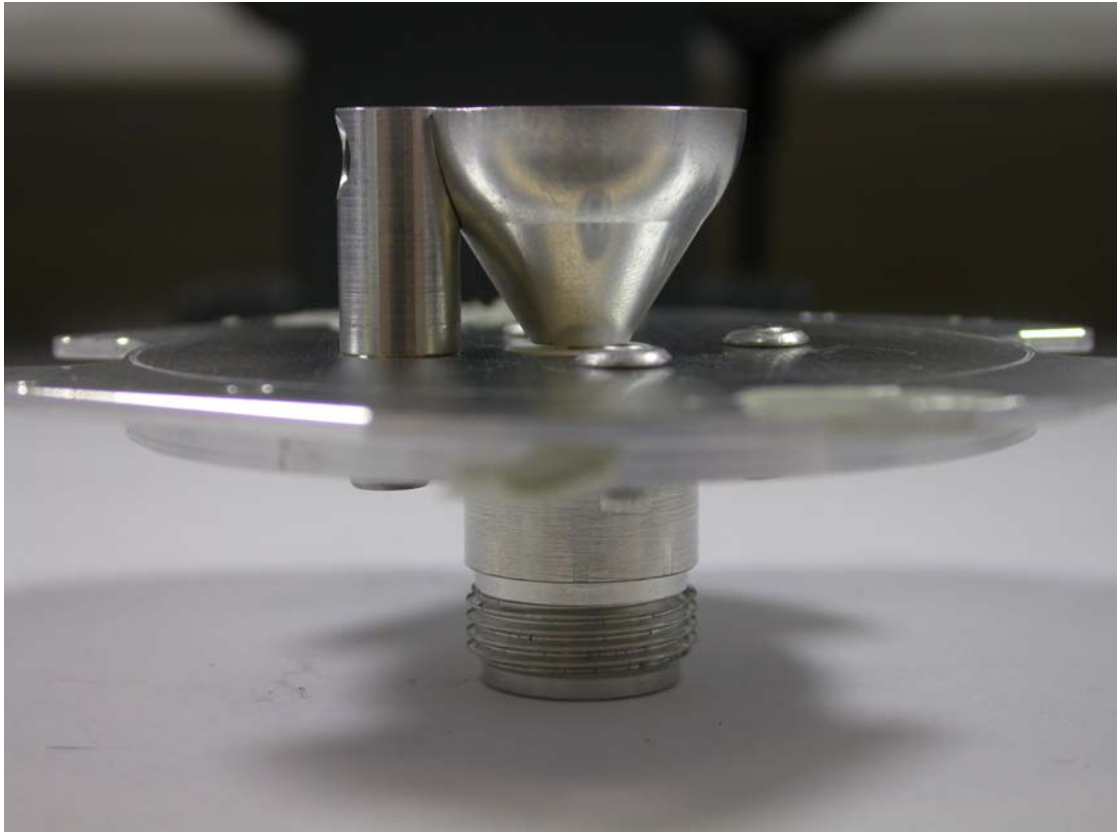
Model: ANT795-6MN (2.4 GHz / 5 GHz)



Attachment B, IWLAN
Model: ANT795-6MN (2.4 GHz / 5 GHz)



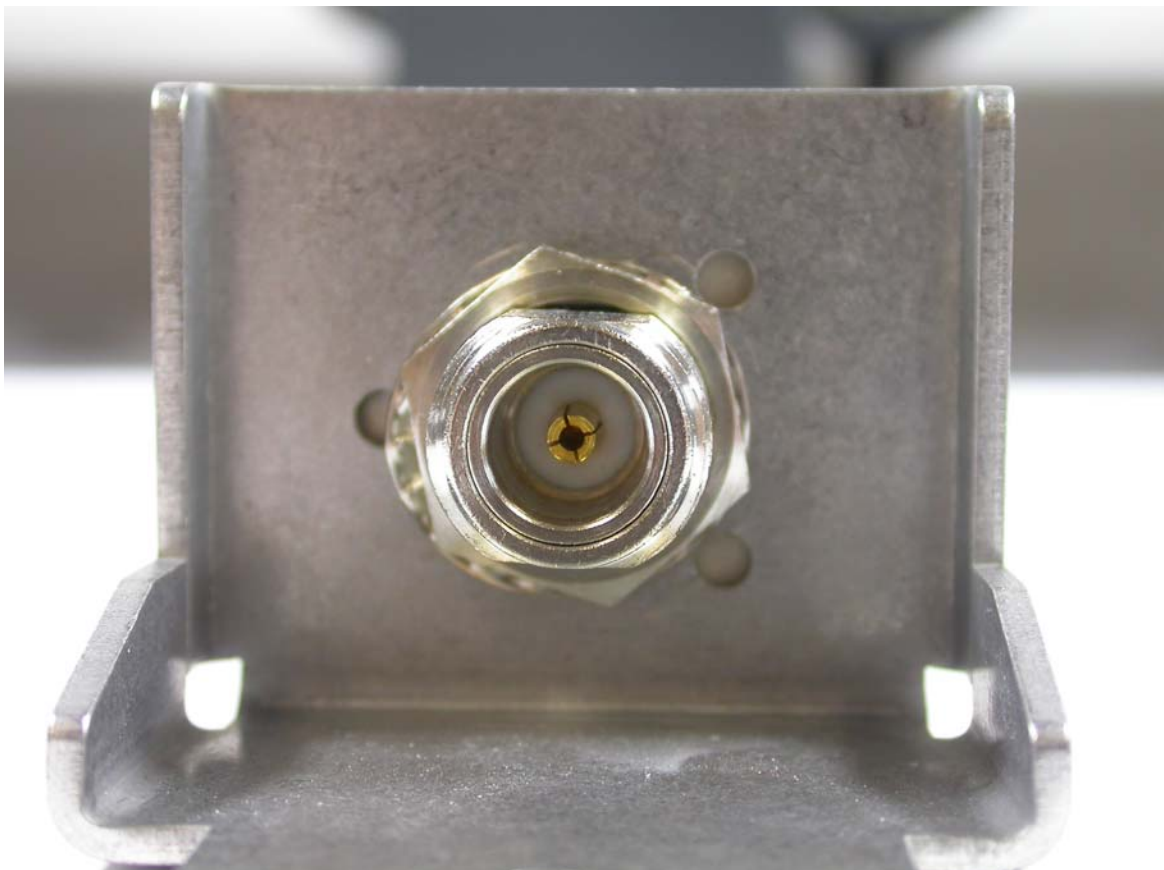
Attachment B, IWLAN
Model: ANT795-6MN (2.4 GHz / 5 GHz)



Model: ANT792-6MN (2.4 GHz)



Attachment B, IWLAN
Model: ANT792-6MN (2.4 GHz)



Attachment B, IWLAN
Model: ANT795-6DN (2.4 GHz / 5 GHz)



Attachment B, IWLAN
Model: ANT795-6DN (2.4 GHz / 5 GHz)



Typ: 1399.26.0042

SPA 2456/75/9/0/DF

Batch-Nr.: 716314

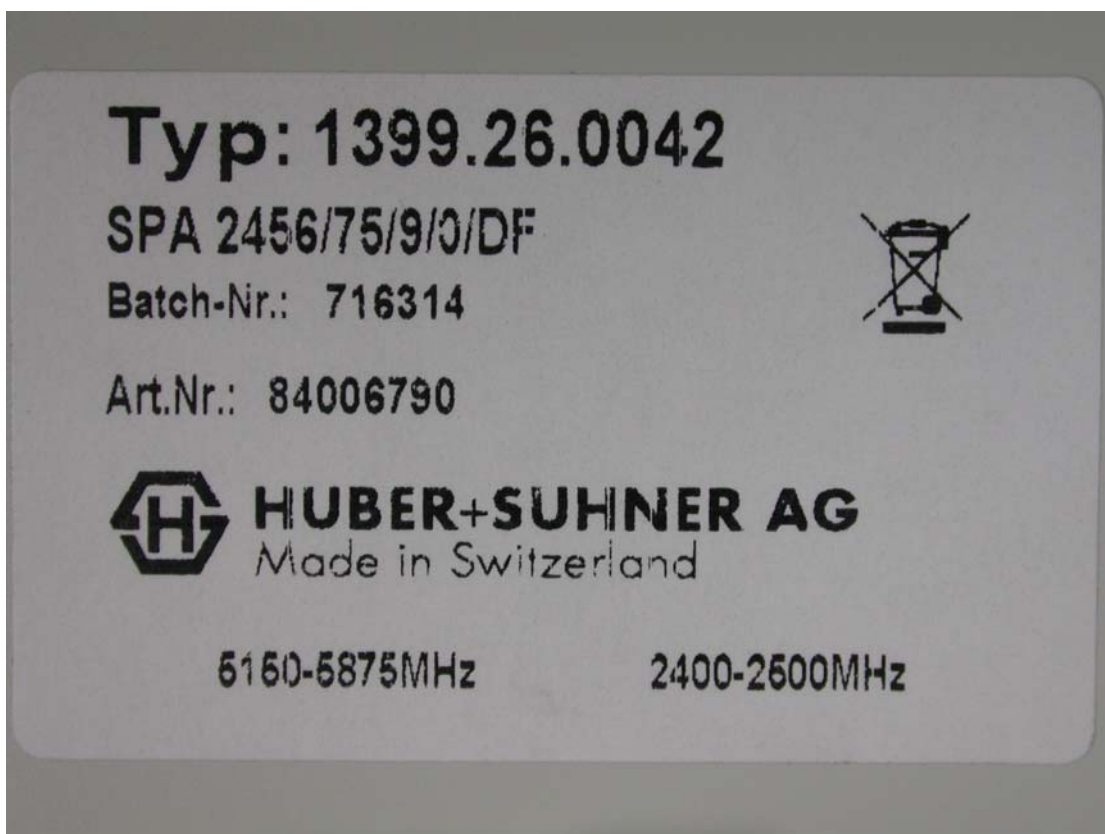
Art.Nr.: 84006790



HUBER+SUHNER AG
Made in Switzerland

6160-5875MHz

2400-2500MHz



Typ: 1399.26.0042

SPA 2456/75/9/0/DF

Batch-Nr.: 716314

Art.Nr.: 84006790



HUBER+SUHNER AG
Made in Switzerland

6160-5875MHz

2400-2500MHz



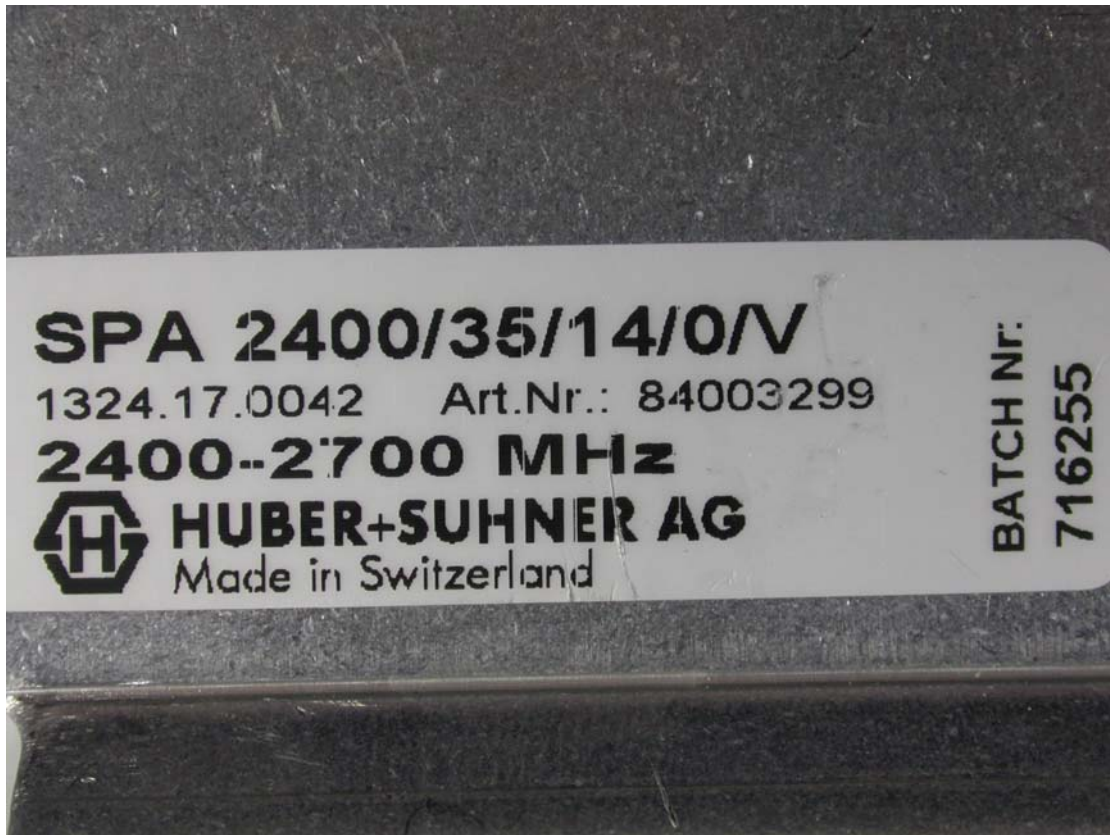
Attachment B, IWLAN
Model: ANT795-6DN (2.4 GHz / 5 GHz)



**Attachment B, IWLAN
Model: ANT792-8DN (2.4 GHz)**



Attachment B, IWLAN
Model: ANT792-8DN (2.4 GHz)



**Attachment B, IWLAN
Model: ANT792-4DN (2.4 GHz)**



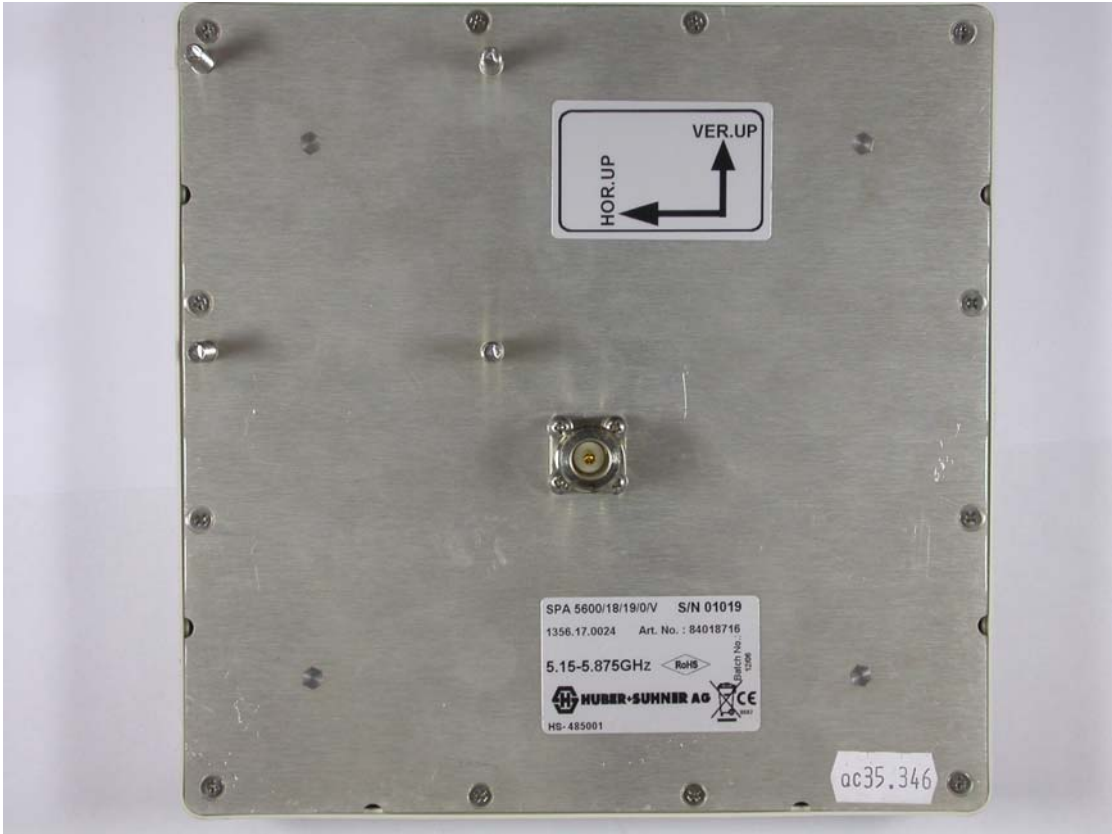
Attachment B, IWLAN
Model: ANT792-4DN (2.4 GHz)



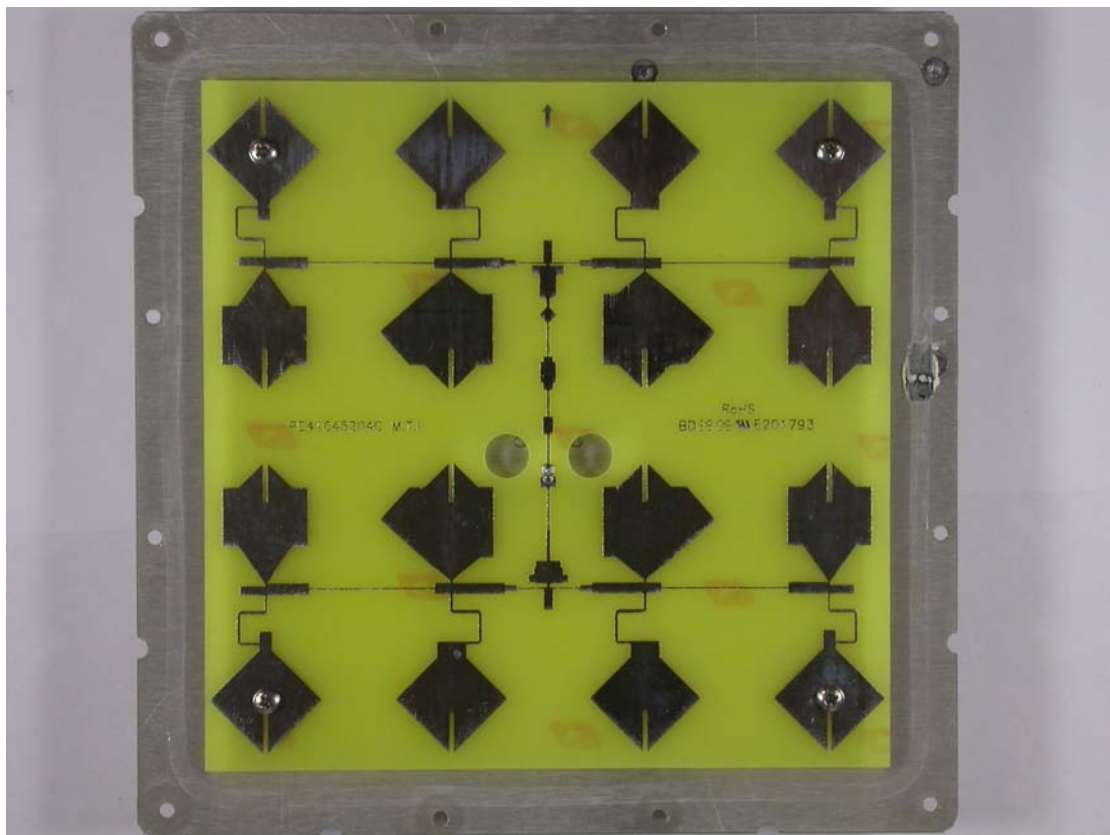
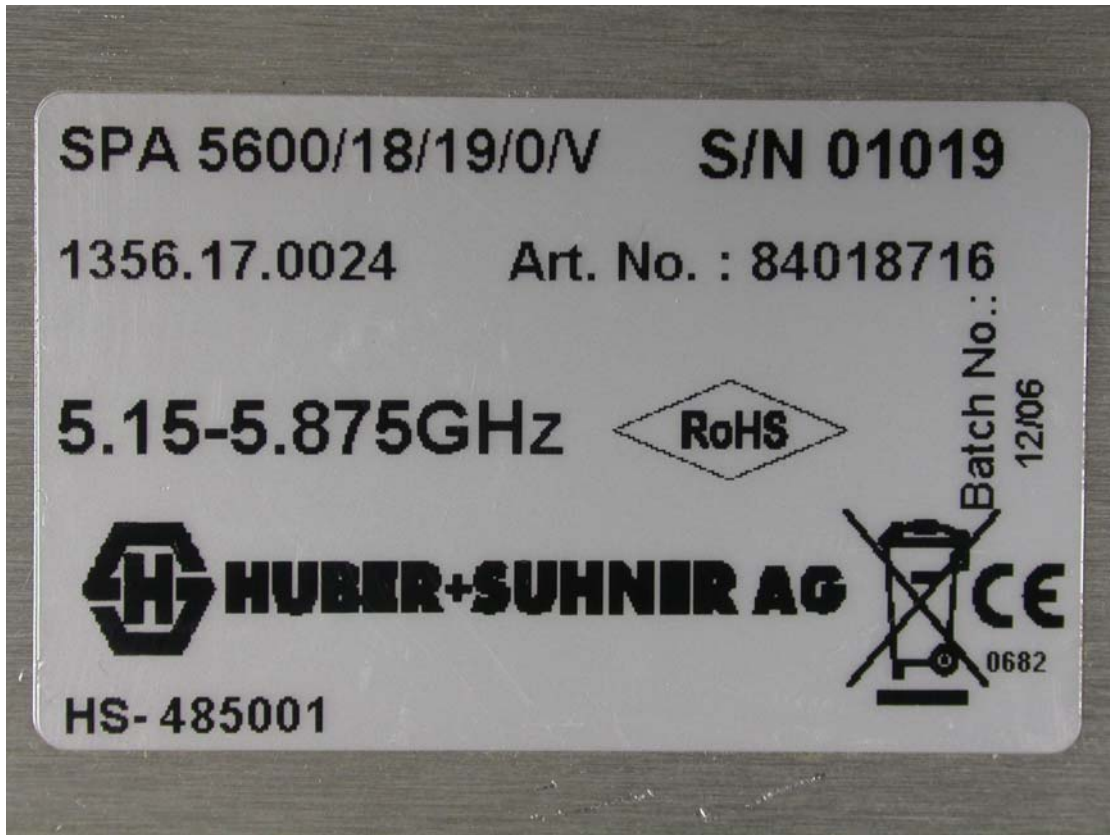
Attachment B, IWLAN
Model: ANT793-6MN (5 GHz)



Attachment B, IWLAN
Model: ANT793-8DN (5 GHz)

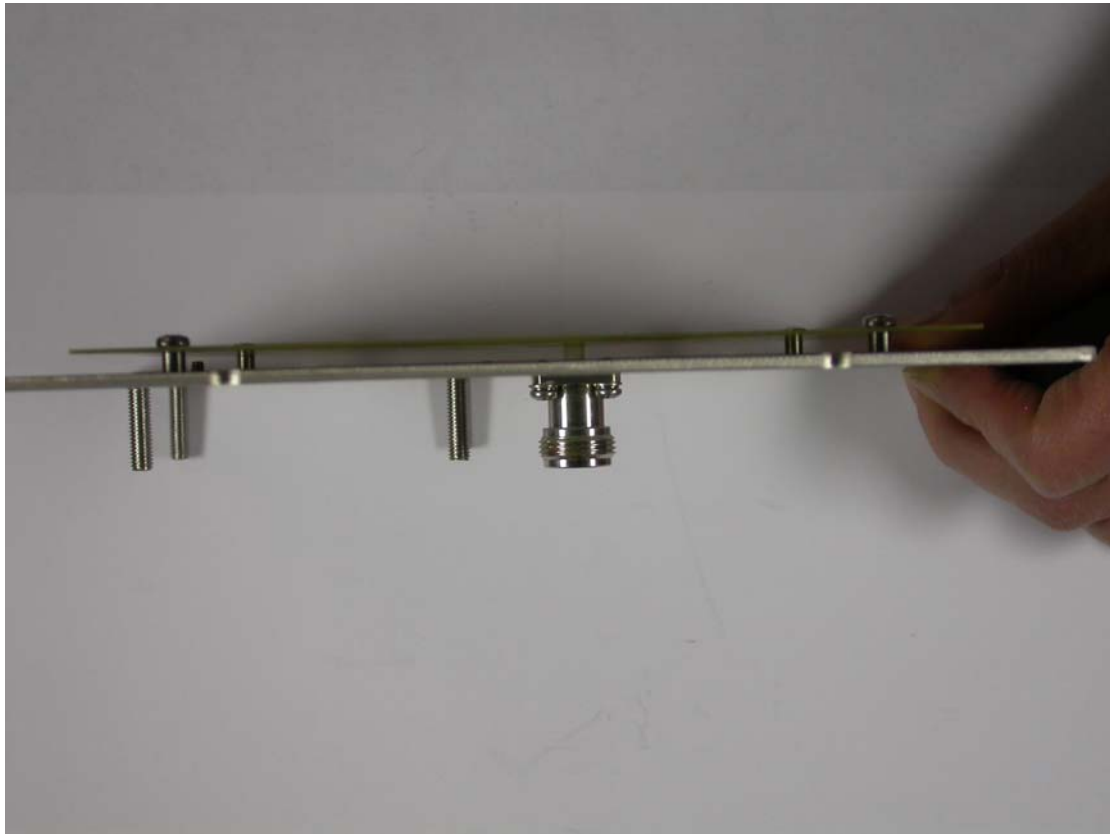


Attachment B, IWLAN
Model: ANT793-8DN (5 GHz)



Model: ANT793-8DN (5 GHz)

Attachment B, IWLAN



Attachment B, IWLAN
Model: ANT793-4MN (5 GHz)



Attachment B, IWLAN
Model: ANT793-4MN (5 GHz)



Attachment B, IWLAN
Model: IWLAN Rcoax (2.4 GHz)



Attachment B, IWLAN
Model: IWLAN Rcoax (5 GHz)



Attachment B, IWLAN
Model: ANT795-4MS (2.4 / 5 GHz)



Attachment B, IWLAN
Model: ANT795-4MR (2.4 / 5 GHz)

