

Pacific Image

Prime Film 1800

User' s Guide

Guide de l' utilisateur

Bedienungsanleitung

Manual de Instrucciones

Guida utente

Guia do usuário

Användarhandbok

CONTENTS

<u>GETTING STARTED</u>	2
<u>Package Contents</u>	2
<u>Quick Installation</u>	2
<u>WINDOWS 95/98 USERS</u>	4
<u>Installing the Software Applications</u>	4
<u>Scanning with PageManager</u>	5
<u>Using ImageFolio</u>	7
<u>Using Mr. Photo</u>	8
<u>Using PhotoAlbum</u>	9
<u>MAC USERS</u>	11
<u>Installing the Software Applications</u>	11
<u>Scanning with PageManager</u>	12
<u>Using Mr. Photo</u>	14
<u>Using PhotoAlbum</u>	15
<u>TECHNICAL SUPPORT</u>	17
<u>WARRANTY & REGISTRATION</u>	18

GETTING STARTED

Congratulations on your purchase of **Pacific Image Prime Film 1800** slide scanner. This section includes package contents and installation.

Important! Save the original box and all packing material for future shipping needs.

Package Contents

Your **Prime Film 1800 slide scanner** package includes the following:

- Prime Film 1800 slide scanner
- Power adapter – 12V 1A power adapter. **Warning! Using any other power adapter may damage the scanner severely.**
- USB cable
- User's guide
- Prime Film CD ROM

Quick Installation

PC and Mac Users:

1. Turn off and unplug the power from your computer.
2. Connect the scanner to your computer with the USB cable supplied with the scanner.
3. Plug the power adapter into the scanner and turn on the scanner.
4. Turn on your computer.

PC Users:

See your PC user's guide for instructions. In most computers, this function can be set in the **BIOS** menu. When starting your computer, check the screen for instructions about how to get into the **BIOS** menu (for most computers, you can press the , <ESC>, <F1> or <F2> key to enter into the **BIOS**).

Once you are in the **BIOS**, go to the proper menu (“**PNP and PCT**” or “**Integrated Peripheral**”) and make sure that “**USB function/USB IRQ**” is enabled.

If you do not know how to change your USB setting, please contact your PC manufacturer for more information.

Windows 98:

- Windows will notify “**detect new device**”, then “**searching new driver**”. Click “**Next step**”.
- Select “**search the proper driver (recommended)**” and click “**Next step**”.
- Select “**Location**”, and “**Browse**” for driver location. Select the “**\USBD98**” folder in the PIE’s CD and click “**Next step**”.
- Windows will find “**Pacific Image Electronics USB Scanner**”. Click “**Next step**”.
- Windows will show “**Windows had installed the driver for this device**”. Click “**Finish**”.

Windows 95:

- From Windows Start menu, click “**Run...**”, and type in “**D:\USBD95\USBSUPP.exe**”. (Assuming your CD ROM driver is D:)
- After installing **USBSUPP.exe**, restart your PC.

WINDOWS 95/98 USERS

Several powerful software applications are bundled with the Scanner to help you get the most out of your Scanner, they are:

PageManager - **PageManager** is a powerful tool that lets you easily scan documents and images into your computer, maintain them electronically, and drag-and-drop them into other applications.

ImageFolio - A comprehensive image processing program that enables you to process scanned images. With this sophisticated set of image editing tools, your imagination is your only limit!

PhotoAlbum - You can organise all your digital photos in an electronic photo album - electronic photos will never bend, fade or tear.

Mr. Photo - The easiest way to create, edit, and share photo masterpieces. **Mr. Photo** has made many operations as easy as 1-2-3 with its drag-and-drop operation and ready-made templates to get your creativity started.

CyberView - Pacific Image's TWAIN compliant scanning interface software for the Scanner. **CyberView** gives you complete control over the resolution, color, and all other aspects of your scans.

Note:

*Readme files and on-line documentation for each of the applications are installed on your hard drive in the same folder as the application files. The default directory for **CyberView** manual is \ElecMenu.*

Installing the Software Applications

1. Place the CD-ROM in the drive.

2. The set-up program will appear automatically on the screen.
3. Click **"Install"**
4. The dialog box that appears on the screen lets you choose which programs you want to install on your system. The default setting installs all of them.
5. Click **"Next"** and the installation of the first application will begin.
6. The Location Dialog Box shows you the default directory where the application will be installed. Click on **"Next"** to accept the default, or enter the directory where you would like the application installed.
7. The **"Setup Complete"** dialog box appears. Click **"OK"** to begin installation of the next application.

Note: During the installation process, the installation program will quit and then restart to begin installation of the next program. Between each install, there is a short pause of a few seconds while the CD-ROM drive comes back up to speed.

8. After all of the applications are installed, you will see a dialog box asking you to restart Windows. Select **"Restart"** and click on the **"Finish"** button to complete the installation process.

Scanning with PageManager

To help you easily perform all your scanning needs, we recommend you use **Presto! PageManager** as your main scanning program.

***Presto! PageManager** is the Operating System for the scanner. You can scan all your images and documents in **PageManager**, and then 'Drag-N-Drop' into the other bundled software such as **ImageFolio**, located in the **PageManager's Application Bar**.*

*You can also add other software such as **Microsoft Word®** to the **Application Bar** for easy 'Drag-N-Drop' one-step OCR (Optical Character Recognition). Please refer to **PageManager's Online Manual** on how to add more applications to the **Application Bar**.*

Placing Your Film in the Scanner:

For mounted positive slides:

1. open the scanner lid
2. insert the mounted slide into the opening
3. close the scanner lid

For negative film strip:

1. open the scanner lid
2. pull the two sliders outward to pop open the film holder
3. position the frame you want to scan in the center of the scan window
4. push down the film holder until it locks and hold the film in place
5. close the scanner lid

Launch Presto!PageManager:

To activate program, go to **Start>programs>Presto! PageManager>** (Go to the right to activate drop down list), **Presto! PageManager>** then click once on the title.

Select Scanner:

Once program is loaded, go to **File>Select Source...** A dialog box will pop up, showing the TWAIN drivers you have on the system. Highlight **CyberView-32U Film** and click **Select**. (*Note: if you will be using the same scanner all the time, you only need to do this selection once.*)



Scanning:

1. To launch the **CyberView** TWAIN driver for the scanner, go to **File>Acquire ...**, or click on the *scanner*

icon on the tool bar. **You will do this every time you scan.**



2. Once **CyberView** has opened, click on the **Film Type Icon** to select either Positive or Negative Film. Doing this lets **CyberView** know what type of file you want to scan.

3. At **CyberView** screen, press the **Preview** button so the scanner can preview the image.

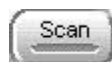


4. Once preview finishes, set your resolution, scaling, gamma controls, and other settings to your liking. Please refer to the **CyberView User's Guide** for full documentation.

5. Next, on the previewed image, select and adjust the size of the area you would like to scan with the selection box. (Many selection boxes can be used at one time giving you the opportunity to scan more than one area from the same image.)



6. Once you've selected the area on the image, the next step is to scan the image. Press the **Scan** button located at the bottom of the **CyberView** screen. **CyberView** will then prompt you to wait while the scanner warms up, calibrates, and scans the image.



7. Once the scan is complete, click **Cancel** to exit **CyberView** and the image will appear as a thumbnail image on the desktop of the **PageManager** program and is ready for processing.



8. You can save the scanned image by selecting **File>Save As...**, or drag-and-drop the image to other applications you've set up on the **PageMaganer** Application Bar to launch the application.

Using ImageFolio

ImageFolio is a comprehensive image-processing program that enables you to process scanned images. With this sophisticated set of image editing tools, your imagination is your only limit!

To Start ImageFolio:

Once you've scanned your image in **PageManager**, you can bring it into **ImageFolio** for editing by drag-and-drop the image to the **ImageFolio** icon on the **PageManager Application Bar**.

Your First Editing Performance:

Once your scanned or imported image appears on the **ImageFolio** desktop, you're ready to do some editing. Just for an example, let's try the **Emboss** filter:

1. Click on the **Rectangle Selector** tool to select it. (If the icon does not show the **Rectangle Selector**, click the right mouse button to toggle the icon to the **Rectangle Selector**)
2. Next, use the selection tool to select a rectangular area of your image.
3. Go to the program menu and select **Process>Emboss...**, the **Emboss** dialog box will pop up. Click **OK**.



And Done! You've just created an Emboss effect on your image!

The **Presto! ImageFolio** has much more powerful tools for you to manipulate your image. Please refer to the online help to learn how to use the other tools.

Using Mr. Photo

Mr. Photo - The easiest way to create, edit, and share photo masterpieces. **Mr. Photo** has made many operations as easy as 1-2-3

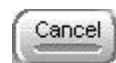
with its drag-and-drop operation and ready-made templates to get your creativity started.

To Start Mr. Photo:

You can start **Mr. Photo** by going to **Start>Programs>Mr. Photo** and select **Presto! Mr. Photo** to start the program.

To Scan Your Photos in Mr. Photo:

1. Move the cursor to the top left corner of the **Mr. Photo** window, and the menu will pop up.
2. Go to **Input>Select Scanner Source...** A dialog box will pop up, showing the TWAIN drivers you have on the system. Highlight **CyberView-32U** and click on the **Select** button. (Note: you only need to do this selection once.)
3. Next, click on the **Acquire** (the scanner icon) button on the top to bring up **CyberView**.
4. Follow the same scanning sequence as described in “**Scanning:**” under the section “**Scanning with PageManager.**”
5. Once the scan is complete, click **Cancel** to exit **CyberView** and the document or image will appear as a thumb nail image in the **Photo Browser** window ready for use.



Using PhotoAlbum

PhotoAlbum - You can organize all your digital photos in an electronic photo album - electronic photos will never bend, fade or tear.

To Start PhotoAlbum:

Once you've scanned your image in **Mr. Photo**, you can bring it into **PhotoAlbum** by drag-and-drop the image to the **PhotoAlbum** icon on the **Mr. Photo Application Bar**.

To Start a New Album:

Click **Create** and **Template** and select a template for your new album.

To Create a Greeting Card:

Simply click and hold your photo in the **Photo Browser window**, and drag-and-drop the image onto the card template.



You can select different template, background, and effect for your album. Please refer to the online help for full documentation on other features.

MAC USERS

The Macintosh applications included with the Scanner are:

PageManager - PageManager is a powerful tool that lets you easily scan documents and images into your computer, maintain them electronically, and drag-and-drop them into other applications.

Mr. Photo - The easiest way to create, edit, and share photo masterpieces. **Mr. Photo** has made many operations as easy as 1-2-3 with its drag-and-drop operation and ready-made templates to get your creativity started.

PhotoAlbum - You can organise all your digital photos in an electronic photo album - electronic photos will never bend, fade or tear.

CyberView - Pacific Image's TWAIN compliant scanning interface software for the Scanner. **CyberView** gives you complete control over the resolution, color, and all other aspects of your scans.

Note:

Readme files and on-line documentation for each of the applications are installed on your hard drive in the same folder as the application files.

Installing the Software Applications

Installing PageManager:

1. Place the CD-ROM in the drive.
2. Double click on the **PageManager** folder to open it.
3. Double click on the **English** folder to open it.
4. Double click on **Presto! PageManager** Disk 1 folder to open it.
5. Double click on **Presto! PageManager Installer #1** to start the installaion, and follow the on-screen instructions to finish.

Installing Mr. Photo:

1. Place the CD-ROM in the drive.
2. Double click on the **Mr. Photo** folder to open it.
3. Double click on **Presto! Mr. Photo Installer** to start the installation, and follow the on-screen instructions to finish.

Installing PhotoAlbum:

1. Place the CD-ROM in the drive.
2. Double click on the **PhotoAlbum** folder to open it.
3. Double click on **PhotoAlbum Installer** to start the installation, and follow the on-screen instructions to finish.

Installing CyberView:

1. Place the CD-ROM in the drive.
2. Double click on the **USB Driver** folder to open it.
3. Double click on **CyberView Installer** to start the installation, and follow the on-screen instructions to finish.

Note:

***CyberView** is a **Plug-In** module. When you first install it, it will be saved in a folder (default is **CyberView** folder) on your hard drive. In order to use it, you can either select the **CyberView Plug-In** from the application or make a copy of the **CyberView Plug-In** and put it in the **Plug-In** folder of the application.*

Scanning with PageManager

To help you easily perform all your scanning needs, we recommend you use **Presto! PageManager** as your main scanning program.

***Presto! PageManager** is the Operating System for the scanner. You can scan all your images and documents in **PageManager**, and then 'Drag-N-Drop' into the other bundled software such as **ImageFolio**, located in the **PageManager's Application Bar**.*

*You can also add other software such as **Microsoft Word®** to the **Application Bar** for easy ‘Drag-N-Drop’ one-step OCR (Optical Character Recognition). Please refer to **PageManager’s** Online Manual on how to add more applications to the **Application Bar**.*

Placing Your Film in the Scanner:

For mounted positive slides: (need illustration)

1. open the scanner lid
2. insert the mounted slide into the opening
3. close the scanner lid

For negative film strip: (need illustration)

1. open the scanner lid
2. pull the two sliders outward to pop open the film holder
3. position the frame you want to scan in the center of the scan window
4. push down the film holder until it locks and hold the film in place
5. close the scanner lid

Launch Presto!PageManager:

To activate program, go to **Presto! PageManager** folder, open the folder, and double click on **Presto! PageManager** to launch it.

Select Scanner:

Once program is loaded, go to **File>Select Source>Select Plug-Ins...**

A dialog box will pop up for you to locate the **CyberView Plut-In**.

Navigate through the folder to find the **CyberView** folder, open it, highlight **CyberView**, and click Select to select it. (*Note: if you will be using the same scanner all the time, you only need to do this selection once.*)

Scanning:

1. To launch the **CyberView** TWAIN driver for the



scanner, go to **File>Acquire...**, or click on the *scanner* icon on the tool bar. **You will do this every time you scan.**

2. Once **CyberView** has opened, click on the **Input Selection** to select either Positive or Negative Film. Doing this lets **CyberView** know what type of file you want to scan.
3. At **CyberView** screen, press the **Preview** button so the scanner can preview the image.
4. Next, on the previewed image, select and adjust the size of the area you would like to scan with the selection box. (Many selection boxes can be used at one time giving you the opportunity to scan more than one area from the same image.)
5. Once you've selected the area on the image, the next step is to scan the image. Press the **Scan** button to start scanning. **CyberView** will then prompt you to wait while the scanner warms up, calibrates, and scans the image.
6. Once the scan is complete, click **Exit** to exit **CyberView** and the image will appear as a thumbnail image on the desktop of the **PageManager** program and is ready for processing.
7. You can save the scanned image by selecting **File>Save As...**, or drag-and-drop the image to other applications you've set up on the **PageMaganer** Application Bar to launch the application.



Using Mr. Photo

Mr. Photo - The easiest way to create, edit, and share photo masterpieces. **Mr. Photo** has made many operations as easy as 1-2-3 with its drag-and-drop operation and ready-made templates to get your creativity started.

To Start Mr. Photo:

You can start **Mr. Photo** by going to **Start>Programs>Mr. Photo** and select **Presto! Mr. Photo** to start the program.

To Scan Your Photos in Mr. Photo:

1. Once program is loaded, go to **File>Select Source>Select Plug-Ins...**A dialog box will pop up for you to locate the **CyberView Plut-In**. Navigate through the folder to find the **CyberView** folder, open it, highlight **CyberView**, and click Select to select it. *(Note: if you will be using the same scanner all the time, you only need to do this selection once.)*
2. Next, click on the **Acquire** (the scanner icon) button on the top to bring up **CyberView**.
3. Follow the same scanning sequence as described in “**Scanning:**” under the section “**Scanning with PageManager.**”
4. Once the scan is complete, click **Exit** to exit **CyberView** and the document or image will appear as a thumb nail image in the **Photo Browser** window ready for use.



Using PhotoAlbum

PhotoAlbum -You can organize all your digital photos in an electronic photo album - electronic photos will never bend, fade or tear.

To Start PhotoAlbum:

Once you've scanned your image in **Mr. Photo**, you can bring it into **PhotoAlbum** by drag-and-drop the image to the **PhotoAlbum** icon on the **Mr. Photo Application Bar**.

To Start a New Album:

Click **Create** and **Template** and select a template for your new album.

To Create a Greeting Card:

Simply click and hold your photo in the **Photo Browser window**, and drag-and-drop the image onto the card template.



You can select different template, background, and effect for your album. Please refer to the online help for full documentation on other features.

TECHNICAL SUPPORT

Cyberview

For questions regarding the scanner or **CyberView**, please contact Pacific Image technical support.

Web site: <http://www.scanace.com>

For products purchased in the United States of America:

Telephone: +1-310-618-9935

Email: support@scanace.com

For products purchased elsewhere:

Fax: +886-2-2698 0368

Email: master@scanace.com

Presto! Suite Software

For questions regarding **Presto!** software please contact NewSoft support.

Web site: <http://www.newsoftinc.com>

United States of America:

Tel: +1-510-445-8616

Email: tech@newsoftinc.com

Taiwan:

Tel: +886-2-2517 0952

Email: support@newsoft.com.tw

Japan:

Tel: +81-3-3451 5133

United Kingdom:

Tel: +44-1752-201148

Germany:

Tel: +49-89-90 05 85 0

Email: info@eurogate.de

WARRANTY & REGISTRATION

You must be registered to:

- Call our technical support hotline.
- Be informed of future software updates.
- Receive information on new products and special offers.

*Pacific Image warrants this product to be free from defects of material and workmanship for one (1) year from the date of purchase. During the warranty period, Pacific Image will repair or replace, at its option, the product at no charge to the customer. The replacement unit may be a remanufactured unit or a unit of equal or greater functionality. After one(1) year, customer shall pay for all parts, labor and service.

If a unit is replaced during the warranty period, the original warranty shall remain in effect until the end of the one (1) year period or shall be 30 days, whichever is longer.

This warranty shall not apply if customer: (1) abuses or modifies Product or Software; (2) operates the system in an environment with excessive dirt, moisture, chemical fumes, extremes of temperature or other improper conditions; or (3) operates the Product with other Software or Hardware not specified for the Product.

Please fill out the following information, or tape your business card here.

First Name: _____ Last Name: _____

Email: _____ Date of Purchase: _____

Address: _____

City: _____ State: _____ Zip: _____

Phone: _____ Fax: _____

Model: _____ Serial Number: _____

Mail this form to: Pacific Image
1830 W. 208th Street
Torrance, CA 90274

Free Software..(Available only in US and Canada)

Get \$100 worth of FREE software with the purchase of this scanner! Send in \$14.95 for shipping and handling for Multimedia Email* (add video, sound clips & image to your email) and PhotoFantasy* (turn your favorite photo into your wildest fantasy!). *PC version only

☐ Yes, I would like to get my FREE Multimedia Email and PhotoFantasy for

\$14.95. Check enclosed \$_____ (make payable to Pacific Image Electronics). Allow 4-6 weeks for delivery.

Federal Communications Commission (FCC) Statement

This Equipment has been tested and found to comply with the limits for a Class B digital device, pursuant to Part 15 of the FCC rules. These limits are designed to provide reasonable protection against harmful interference in a residential installation. This equipment generates, uses and can radiate radio frequency energy and, if not installed and used in accordance with the instructions, may cause harmful interference to radio communications. However, there is no guarantee that interference will not occur in a particular installation. If this equipment does cause harmful interference to radio or television reception, which can be determined by turning the equipment off and on, the user is encouraged to try to correct the interference by one or more of the following measures:

- Reorient or relocate the receiving antenna.
- Increase the separation between the equipment and receiver.
- Connect the equipment into an outlet on a circuit different from that to which the receiver is connected.
- Consult the dealer or an experienced radio/TV technician for help.

Warning:

Use only shielded cables to connect I/O devices to this equipment.

You are cautioned that changes or modifications not expressly approved by the party responsible for compliance could void your authority to operate the equipment.