

Notes: Unless Otherwise Specified

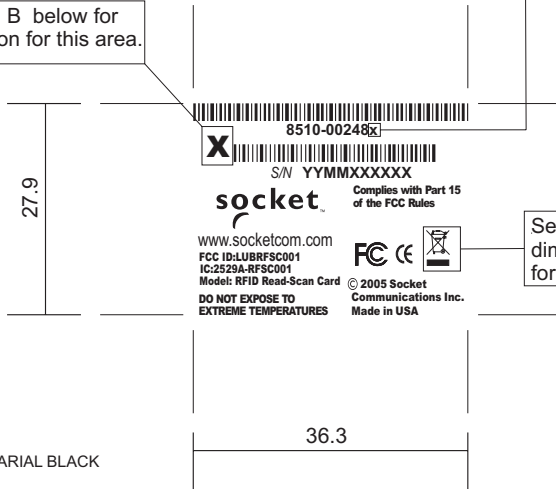
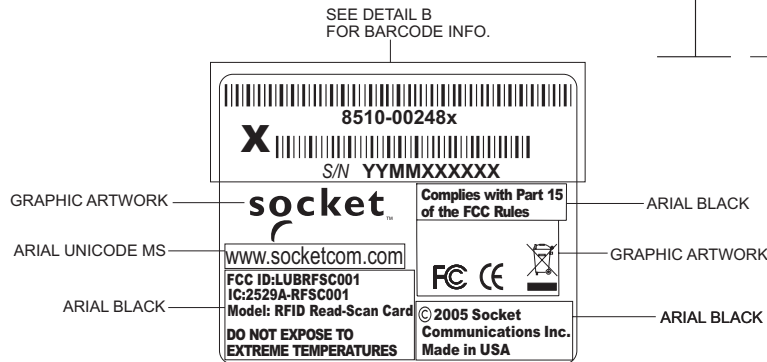
- 1.) Reference drawing: 6510-00024 for die cut and material specifications.
- 2.) Font size at vendor discretion. Vendor must choose a size that is clear and readable by the human eye.
- 3.) Artwork should be centered top to bottom and left to right on the label. See below for reference of placing the artwork in relationship to the label.
- 4.) Artwork of the label should be oriented and laid out like Detail A.

The information contained on this document is proprietary of Socket Communication, Inc. any distribution, duplication, or manipulation of this document is prohibited without written consent from Socket Communications, Inc.

Part# Revision placement holder.
All placement holder should be replaced with the Revision letter provided on the ECO or ERO document.
 See DETAIL B below for more information.

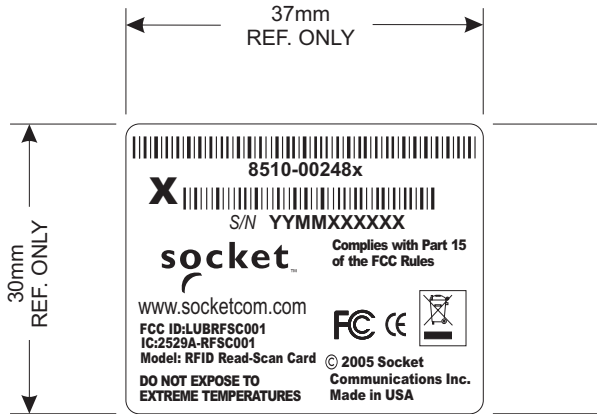
See Detail B below for specification for this area.

See page 2 for dimension specification for this symbol.



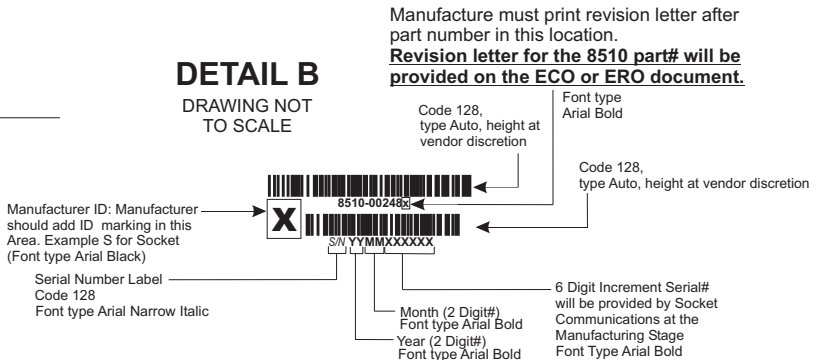
DETAIL A
 SCALE 1:1
 REF. ONLY

Place tolerance of the printing +/- 0.3 using (min. 300DPI) thermal transfer printer To be printed in NMP production



DRAWING NOT TO SCALE

DETAIL B
 DRAWING NOT TO SCALE



Manufacture must print revision letter after part number in this location.
Revision letter for the 8510 part# will be provided on the ECO or ERO document.

ALL DIMENSION IN mm

<p>3740Cental Court Newark, CA. 94560</p> <p>PN: (510)744-2700 FX: (510)744-2727</p>	<p>www.socketcom.com</p>	<p>Sheet 1 of 2</p>	<p>Original Scale 1 to 1</p>	<p>Drawn</p>	<p>James Rebello</p>	<p>Date 09/13/05</p>
		<p>Original Size A</p>	<p>ENGR</p>	<p>CHK</p>		
	<p>NMP Code</p>	<p>MKTG</p>				
<p>Drawing Title</p> <p>Label, Barcode, RFID/SCAN, T2, CL1</p>		<p>Drawing Number</p> <p>6530-00190</p>		<p>Approved / Date</p>		<p>Rev</p> <p>A</p>

Design of Marking (Alternative 2)



Crossed-out wheeled bin required according to Art. 10.3 of Directive 2002/96/EC, described in Annex IV

Marking for identification of placing on the market as of 13 August 2005

- The bar is the symbol for marking of new waste (no place holder)
- The bar has to be used in conjunction with the crossed-out wheeled bin. Dimensional relationship shall be maintained when the size is altered. (The bar shall be $h=0,3a$ or at least 1 mm in height)

WEEE Symbol

DRAWING NOT
TO SCALE