

1 2 3 4 5 6

A

B

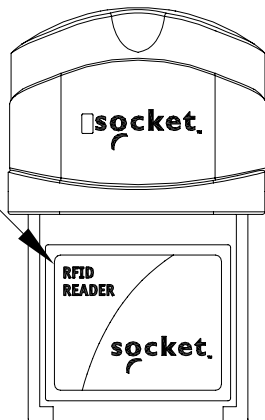
C

D

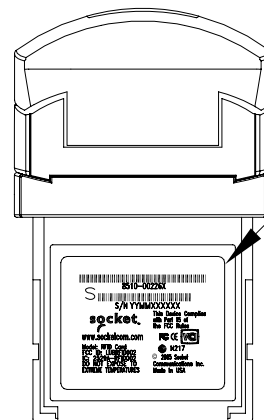
TOP VIEW

BOTTOM VIEW

CENTER LABEL ②
INSIDE WINDOW AREA



① CENTER LABEL
INSIDE WINDOW AREA



①	6530-00176	Barcode/Compliance Label, RFID	1
②	6540-00123	RFID Product ID, Label	1
ITEM#	FINISHED P/N	DESCRIPTION	QTY

		///	TOL±	◎	NEWARK, CA. 94560 37400 Central Ct. phone (510)744-2700 fax (510)744-2727		DWG. NO. 0340-00086	TITLE: LABEL PLACEMENT DWG., RFID
		///	RANGE	M1 M2 S1 S2 P1 P2 C B	SOCKET COMMUNICATIONS, INC.		APPD:	CUSTOMER P/N.:
B	FCC ID AND IC MODIFICATION	01/18/07	0~6	.05 .10 .15 .20 .05 .10 .50 .15	.X: ±0.2 X': ±0.5*		CHKD: ALLAN LEAFBLAD	USE MODEL:
A	FIRST RELEASE	05/2/05	6~30	.10 .20 .15 .25 .10 .15 1.00 .15	.XX: ±0.05 .XXX: ±		DATE	SCALE
Rev	Engineering Change	M/D/Y	30~80	.15 .25 .20 .30 .20 .40 2.00 .05	UNIT mm		SHEET	SHEET SIZE
			80~180	.15 .30 .25 .45 .40 .80 3.00 .25	DR: JAMES REBELLO		1/1	A3
			180~300	.20 .50 .40 .60 .05 1.20 4.00 .30				
			300~	.30 .80 .70 .80 .05 1.50 5.00 .50				

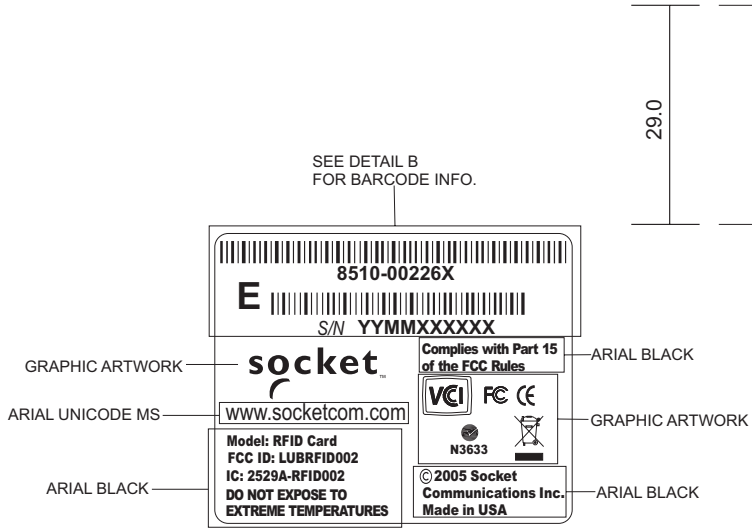
1 2 3 4 5 6

The information contained on this document is proprietary of Socket Communication, Inc. any distribution, duplication, or manipulation of this document is prohibited without written consent from Socket Communications, Inc.

Notes: Unless Otherwise Specified

1. Reference drawing: 6510-00024 for die cut and material specifications.
- 2.) For font types see below font size at vendor discretion. Vendor must choose a size that is clear and readable by the human eye.
- 3.) Artwork should be centered top to bottom and left to right on the label. See below for reference of placing the artwork in relationship to the label.
- 4.) Artwork of the label should be oriented and laid out like Detail A.

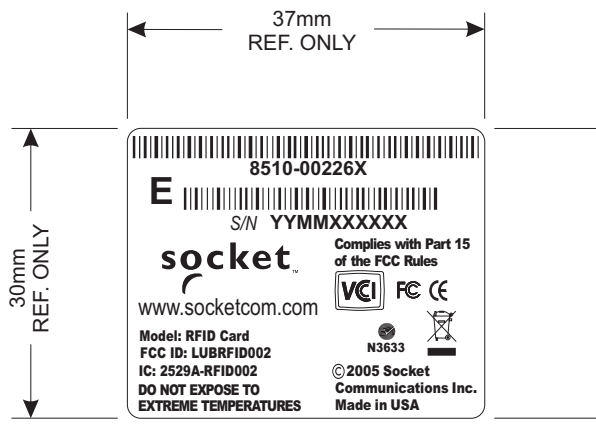
Part# Revision placement holder.
All placement holder should be replaced with the Revision letter provided on the ECO or ERO document.
 See DETAIL B below for more information.



See page 2 for dimension specification for this symbol.

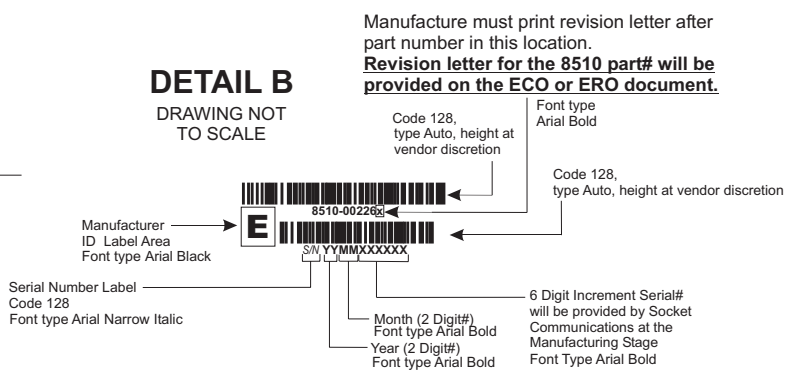
DETAIL A
 SCALE 1:1
 REF. ONLY

Place tolerance of the printing +/- 0.3 using (min. 300DPI) thermal transfer printer To be printed in NMP production



DRAWING
 NOT TO SCALE

DETAIL B
 DRAWING NOT TO SCALE



ALL DIMENSION IN mm

<p>www.socketcom.com</p> <p>3740Cental Court Newark, CA. 94560</p> <p>PN: (510)744-2700 FX: (510)744-2727</p>	Sheet 1 of 2	Original Scale 1 to 1	Drawn	James Rebello	Date 01/18/07
		Original Size A	ENGR		
		NMP Code	CHK		
Drawing Title	Drawing Number	Approved / Date	Rev		
RFID Back Label	6530-00176		E		

Design of Marking (Alternative 2)



Crossed-out wheeled bin required according to Art. 10.3 of Directive 2002/96/EC, described in Annex IV

Marking for identification of placing on the market as of 13 August 2005

- The bar is the symbol for marking of new waste (no place holder)
- The bar has to be used in conjunction with the crossed-out wheeled bin. Dimensional relationship shall be maintained when the size is altered. (The bar shall be $h=0,3a$ or at least 1 mm in height)

WEEE Symbol

DRAWING NOT
TO SCALE

Drawing Title

RFID Back Label

Drawing Number

6530-00176

SHEET #

2 of 2

Rev

E