

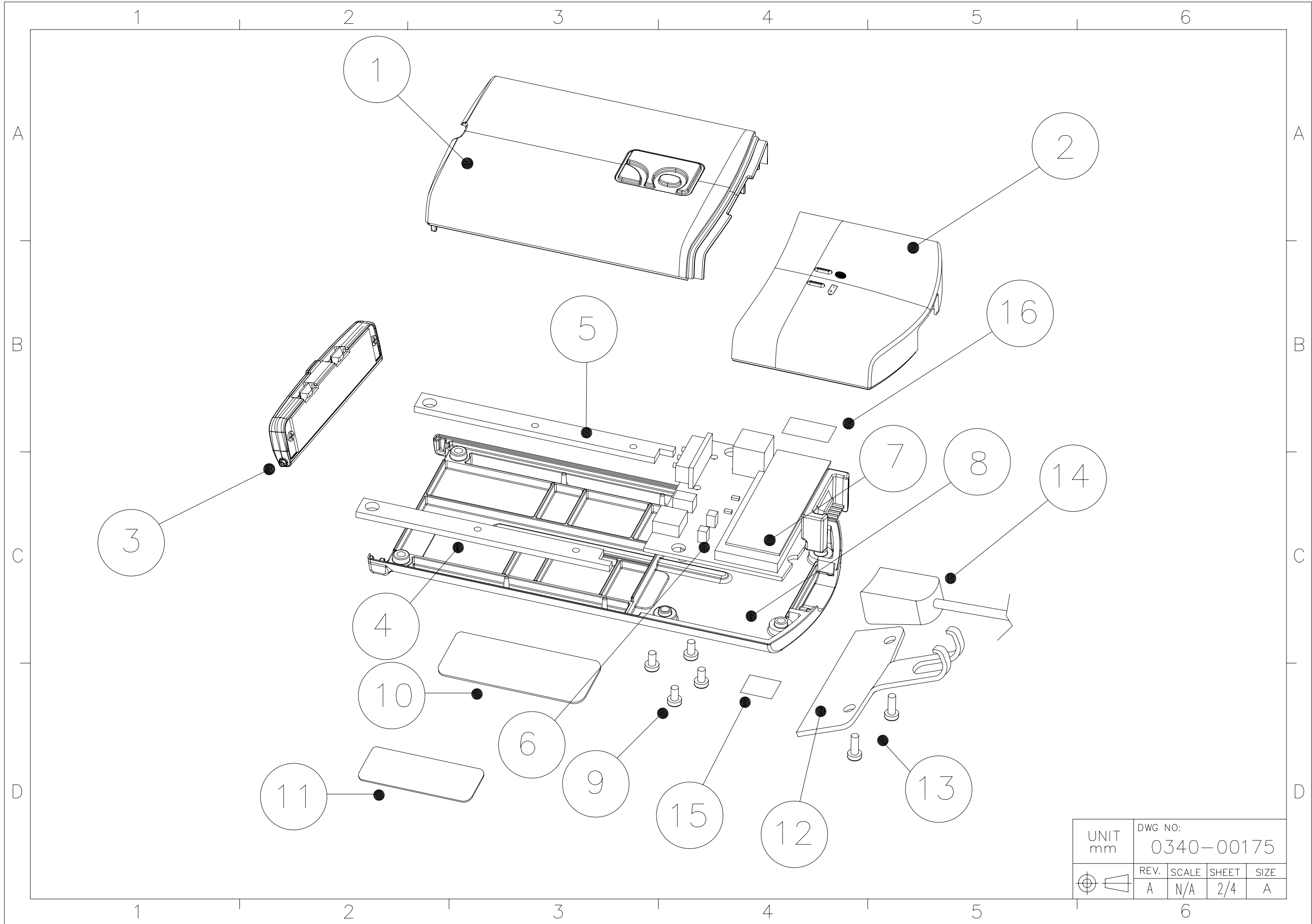
ASSEMBLY NOTES: UNLESS OTHERWISE SPECIFIED

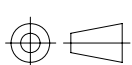
1. PEEL BACK STRIP ON ITEM# ④, ⑤ AND INSERT INTO ITEM# ⑧. SEE DETAIL A
2. INSERT ITEM# ⑥ INTO ITEM# ⑧. SEE DETAIL B
3. INSERT ITEM# ③ INTO ITEM# ⑧. SEE DETAIL C
4. PLACE ITEM# ① ONTO ITEM# ⑧. THEN SCREW TOGETHER THE TWO HALVES USING ITEM# ⑨. SEE DETAIL D
5. PLACE ITEM# ⑬ AND ITEM# ⑫ ONTO ITEM# ⑦ THEN INSERT ITEM# ⑦ ONTO ITEM# ⑥. SEE DETAIL E
6. PLACE ITEM# ② ONTO ITEM# ⑧. THEN SCREW TOGETHER THE TWO HALVES USING ITEM# ⑨. SEE DETAIL F
7. INSERT ITEM# ⑭ INTO THE HEADER ON ITEM# ⑥. SEE DETAIL G
8. PLACE THE CLAW OF ITEM# ⑫ ROUND THE CONNECTOR BACK OF ITEM# ⑭ ALIGN HOLES TO HOLES ON ITEM# ⑧ AND SCREW TOGETHER WITH ITEM# ⑬. SEE DETAIL H
9. PEEL BACK STRIP FOR ITEMS# ⑩, ⑪ AND STICK ONTO THE BACKSIDE OF ITEM# ⑧. SEE DETAIL I

①	7110-00076	Wrist Unit, Top Case Cover	1
②	7110-00073	Sub Assy, Wrist Unit, Plastic Top	1
③	7110-00075	Sub Assy, Batt Door, Wrist Unit	1
④	4030-00028	Wrist Unit, Right Bottom Case Gasket	1
⑤	4030-00027	Wrist Unit, Left Bottom Case Gasket	1
⑥	7010-00166	Wrist Unit, PCBA	1
⑦	8520-00109	Assy, MOD, BC02/2, CRS	1
⑧	7110-00077	Wrist Unit, Bottom Case	1
⑨	5010-00026	Wrist Unit, Case Screw	4
⑩	6530-00217	Wrist Unit, Bar Code Label, BC02/2	1
⑪	6570-00042	Wrist Unit, Label, MAC Address	1
⑫	4210-00041	Wrist Unit, Metal, Stamped, Cable Connector Restraint	1
⑬	5010-00028	Wrist Unit, Case Screw	2
⑭	8100-00218	Wrist Unit, Interface Cable	1
⑮	6650-00035	3M, Tape, 401B, 7mm x 7mm	1
⑯	6650-00036	3M, Tape, 4032, 9.5mm x 6mm	1
ITEM#	FINISHED P/N	DESCRIPTION	QTY

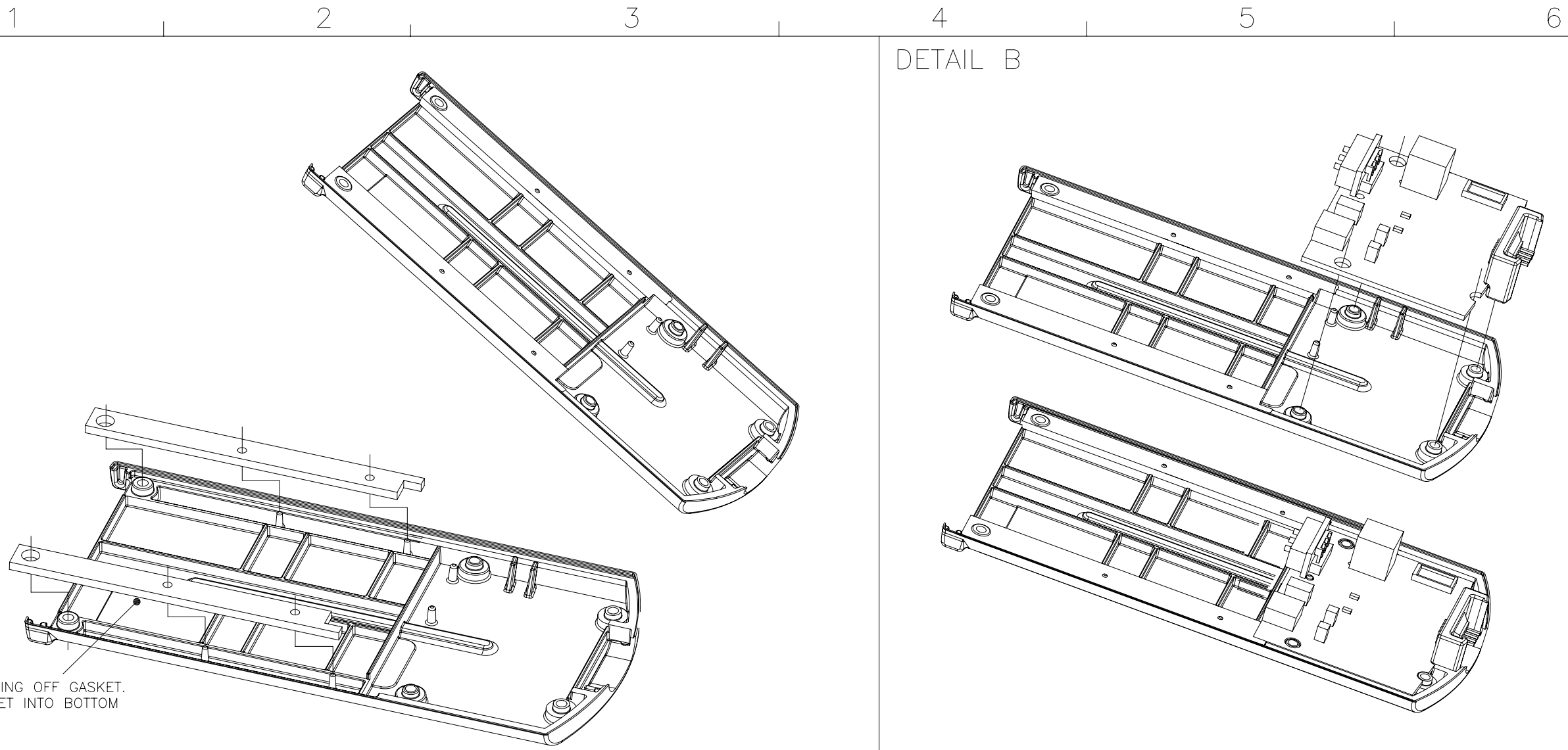
SEE SHEET 3 AND 4 FOR ALL DETAIL VIEW

		/ /	TOL±	◎											SOCKET COMMUNICATIONS, INC.	NEWARK, CA. 94560 37400 Central Ct. phone (510)744-2700 fax (510)744-2727		DWG. NO. 0340-00175		TITLE: ASSY, FINAL CRS, WRIST UNIT,BC02/2					
		/ /	RANGE	M1	M2	S1	S2	P1	P2	C	B	X: ±0.2 X*: ±0.5*		UNIT mm		APPD: BOB MILLER		USE MODEL:							
		/ /	0~6	.05	.10	.15	.20	.05	.10	.50	.15	.X: ±0.1 .XX*: ±				CHKD: ALLAN LEAFBLAD		DATE 08/07/06		SCALE N/A		SHEET 1/4		SIZE A	
A		Engineering Release	08/07/06	.15	.25	.20	.30	.20	.40	2.00	.05	.XXX: ±0.01 .XXX*: ±				DR: JAMES REBELLO									
Rev		Engineering Change	M/D/Y	.20	.50	.40	.60	.05	1.20	4.00	.30														
				.30	.80	.70	.80	.05	1.50	5.00	.50														



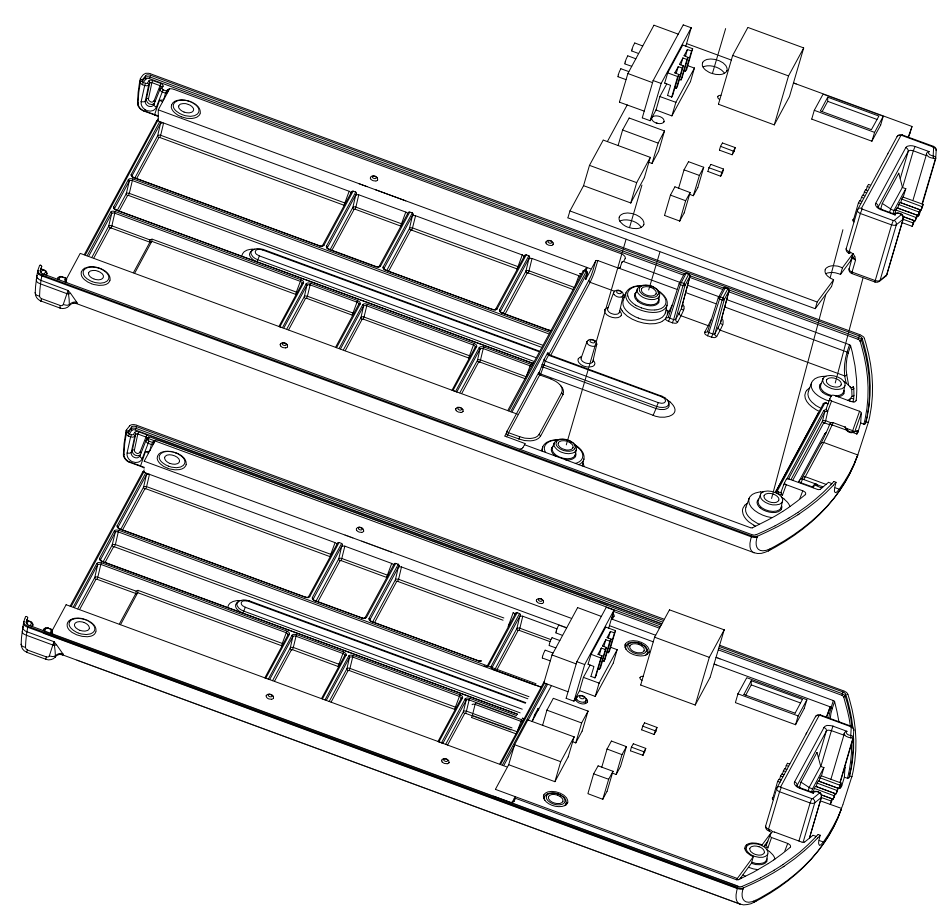
	UNIT mm			
	DWG NO: 0340-00175			
REV.	SCALE	SHEET	SIZE	
A	N/A	2/4	A	

DETAIL A

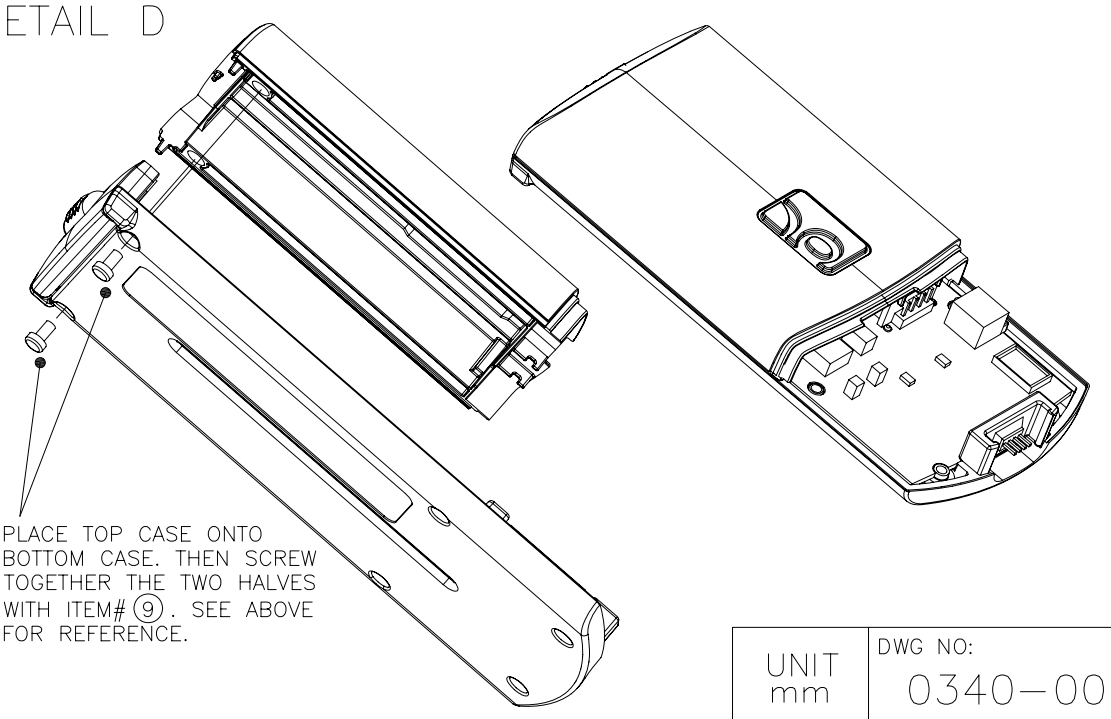


REMOVE BACKING OFF GASKET.
INSTALL GASKET INTO BOTTOM
CASE.

DETAIL B

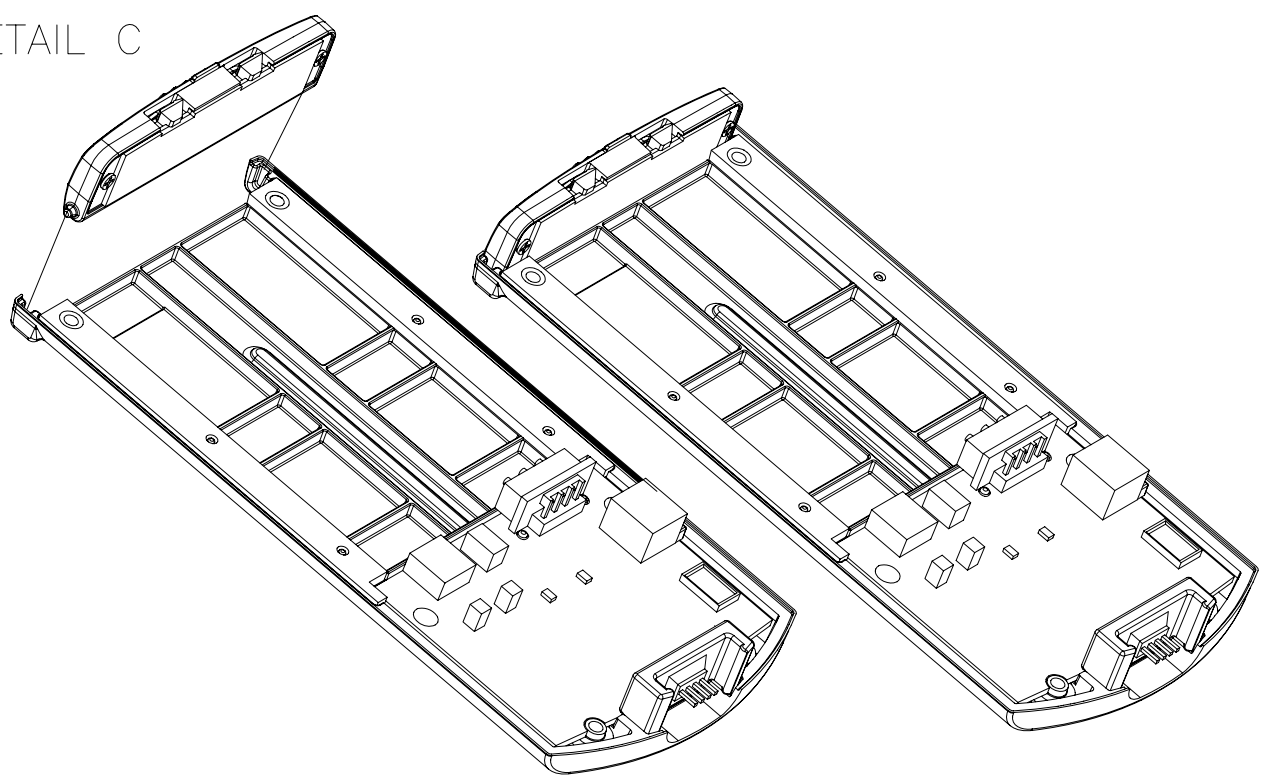


DETAIL D



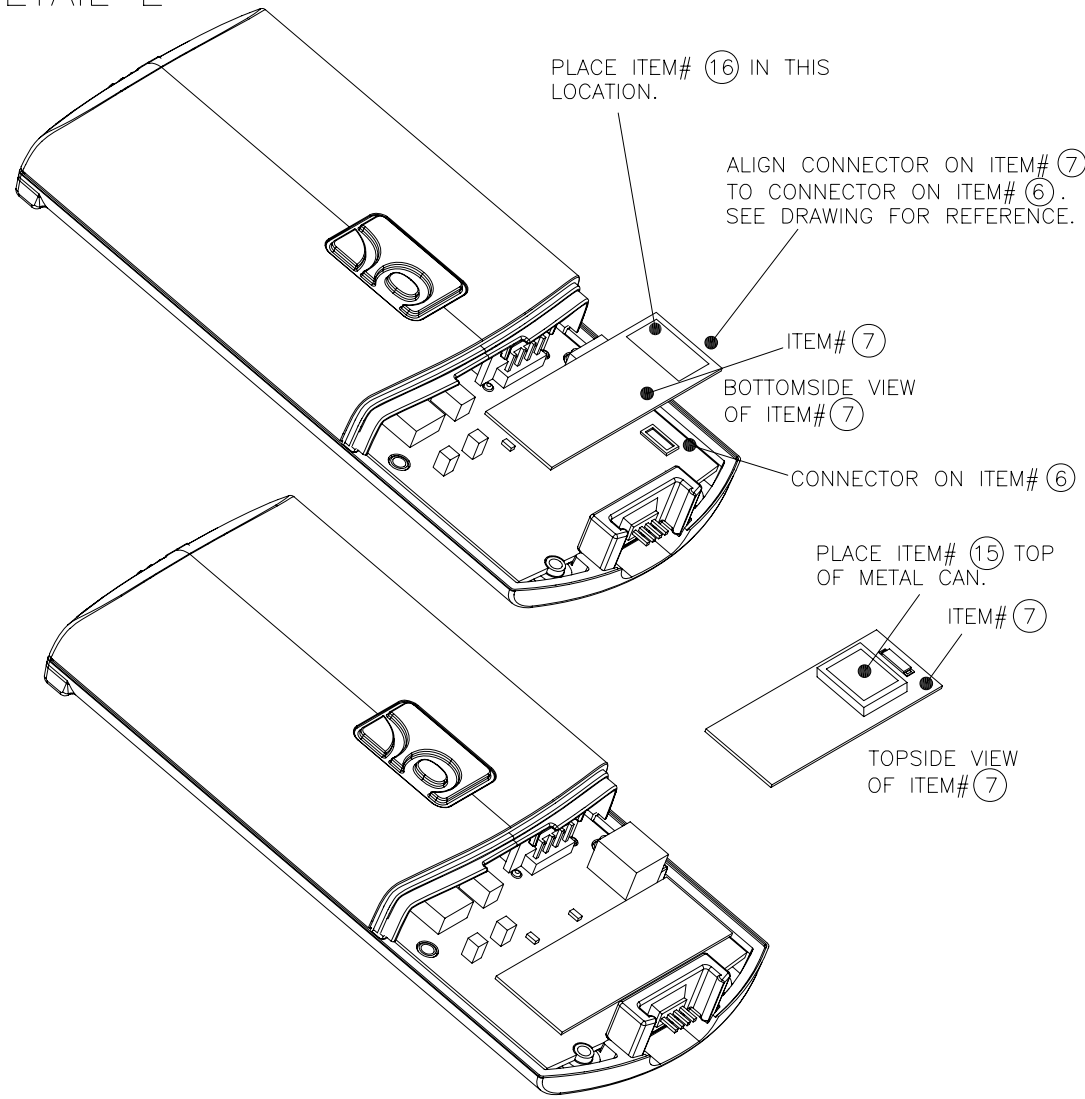
PLACE TOP CASE ONTO
BOTTOM CASE. THEN SCREW
TOGETHER THE TWO HALVES
WITH ITEM# ⑨. SEE ABOVE
FOR REFERENCE.

DETAIL C

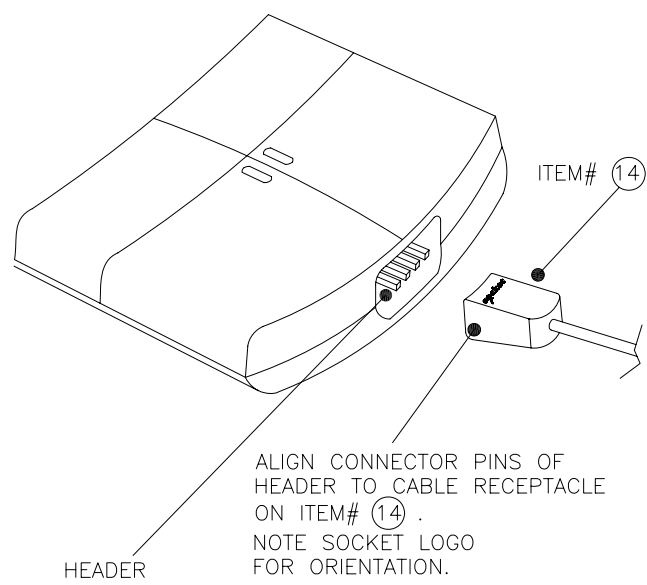
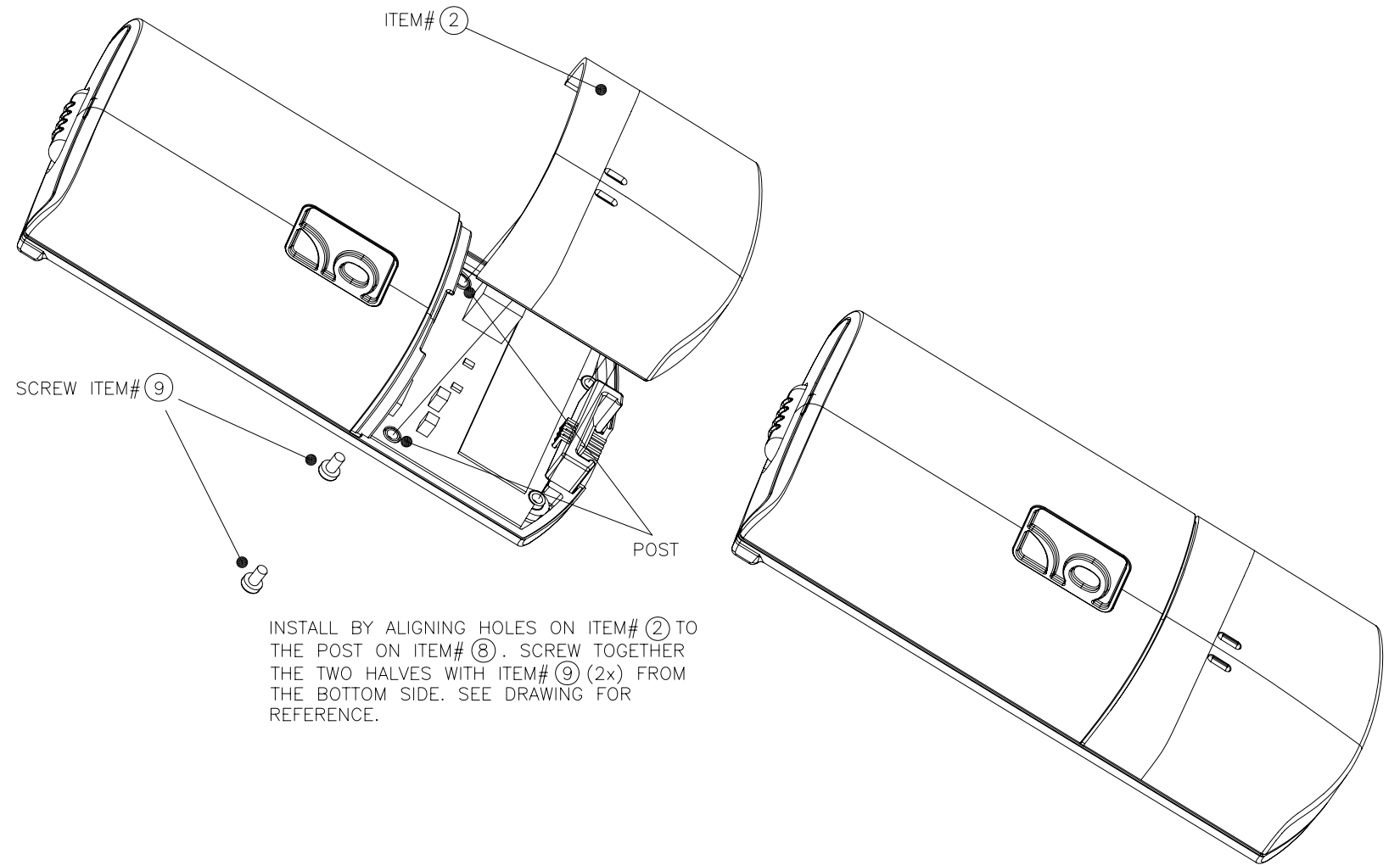


UNIT mm	DWG NO: 0340-00175			
	REV. A	SCALE N/A	SHEET 3/4	SIZE A

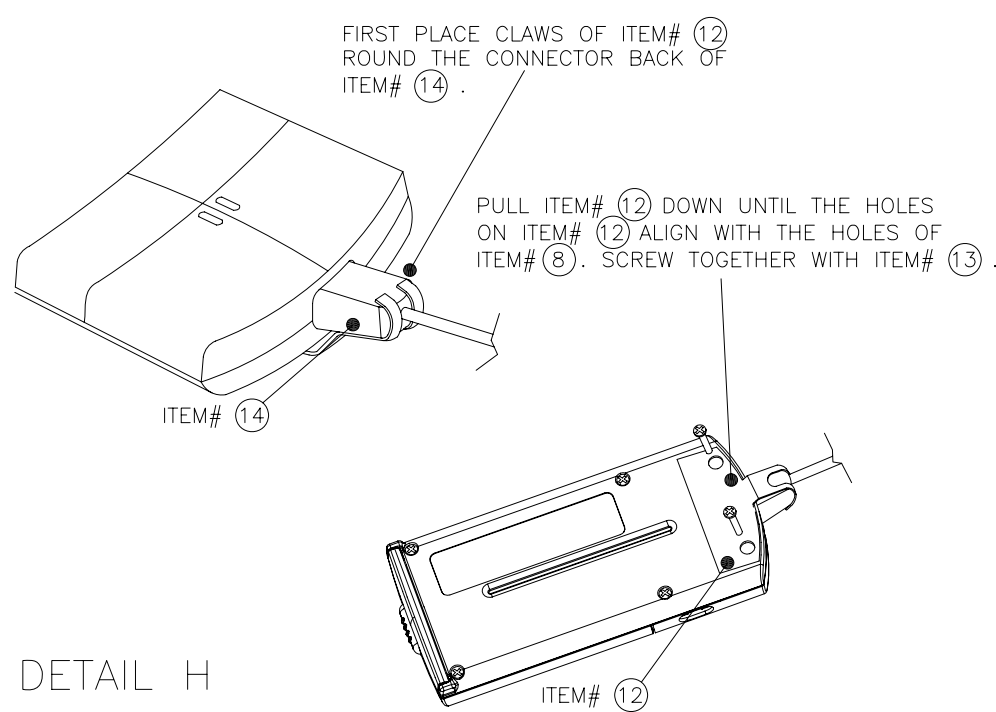
DETAIL E



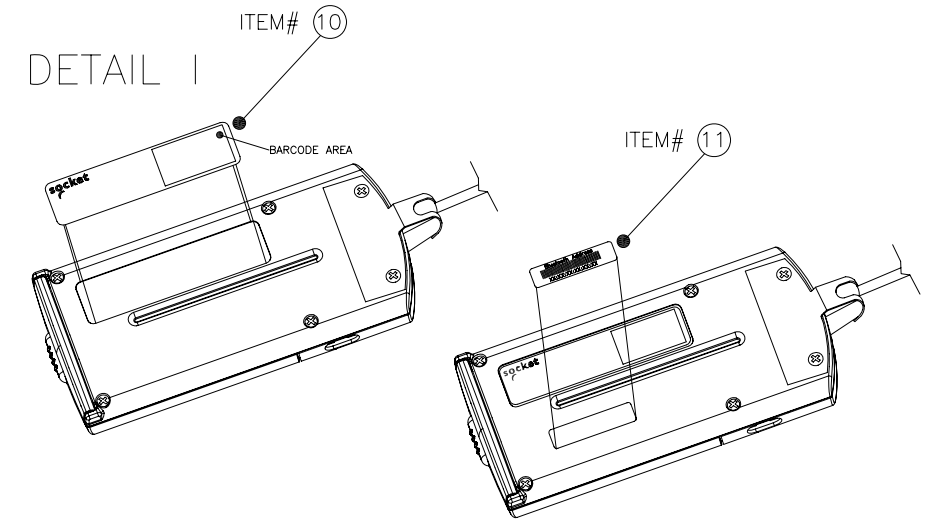
DETAIL F



DETAIL G



DETAIL H



DETAIL I

UNIT mm	DWG NO: 0340-00175			
	REV. A	SCALE N/A	SHEET 4/4	SIZE A