

BATTERY SAFETY INFORMATION

- Use only size "AA" (LR6) alkaline batteries (2 required) and "AAA" (LR03) alkaline batteries (2 required).
- Charging of rechargeable batteries should only be done under adult supervision.
- Remove rechargeable batteries from the product before recharging.
- Do not mix old and new batteries.
- Do not mix alkaline, standard (carbon-zinc), or rechargeable batteries.
- Be sure to insert the batteries correctly and follow the toy and battery manufacturer's instruction.
- Always remove exhausted or dead batteries from the product.
- Dispose of dead batteries properly: do not burn or bury them.
- Do not attempt to recharge non-rechargeable batteries.
- Avoid short-circuiting battery terminals.
- Remove batteries before placing the unit into storage for a prolonged period of time.

FCC & IC COMPLIANCE

NOTE: This equipment has been tested and found to comply with the limits for a Class B digital device, pursuant to Part 15 of the FCC Rules. These limits are designed to provide reasonable protection against harmful interference in a residential installation. This equipment generates, uses and can radiate radio frequency energy and, if not installed and used in accordance with the instructions, may cause harmful interference to radio communications. However, there is no guarantee that interference will not occur in a particular installation. If this equipment does cause harmful interference to radio or television reception, which can be determined by turning the equipment off and on, the user is encouraged to try to correct the interference by one or more of the following measures:

- Reorient or relocate the receiving antenna.
- Increase the separation between the equipment and receiver.
- Connect the equipment into an outlet on a circuit different from that to which the receiver is connected.
- Consult the dealer or an experienced radio/TV technician for help.

This device complies with Part 15 of the FCC Rules. Operation is subject to the following two conditions: (1) This device may not cause harmful interference, and (2) this device must accept any interference received, including interference that may cause undesired operation.

Caution: Modifications not authorized by the manufacturer may void users authority to operate this device.

This device contains licence-exempt transmitter(s)/receiver(s) that comply with Innovation, Science and Economic Development Canada's licence-exempt RSS(s). Operation is subject to the following two conditions: (1) This device may not cause interference. (2) This device must accept any interference, including interference that may cause undesired operation of the device.



'Let's care for the environment!'

The wheelie bin symbol indicates that the product must not be disposed of with other household waste. Please use designated collection points or recycling facilities when disposing of the item. Do not treat old batteries as household waste. Take them to a designated recycling facility.

Please keep this manual as it contains important information.



Printed in China
0520-1-E/INT

WWW.LOLSURPRISE.COM

© 2020 MGA Entertainment, Inc.

L.O.L. SURPRISE!™ is a trademark of MGA in the U.S. and other countries. All logos, names, characters, likenesses, images, slogans, and packaging appearance are the property of MGA.

MGA Entertainment, Inc.

9220 Winnetka Ave.
Chatsworth, CA 91311 U.S.A.
(800) 222-4685

MGA Entertainment UK Ltd.

50 Presley Way, Crownhill,
Milton Keynes, MK8 0ES, Bucks, UK
0800 521 558

MGA Entertainment (Netherlands) B.V.

Baronie 68-70, 2404XG Alphen a/d Rijn, The Netherlands
Tel: +31 (0) 172 758 038

E-mail: klantenservice@mgae.com

Imported by MGA Entertainment Australia Pty Ltd

Suite 2.02, 32 Delhi Road
Macquarie Park NSW 2113
1300 059 676



WARNING:
CHOKING HAZARD—Small parts.
Not for children under 3 years.

SKU: 569398

AGES 3+ YEARS

**ADULT SUPERVISION &
BATTERY INSTALLATION REQUIRED**

CONTENTS

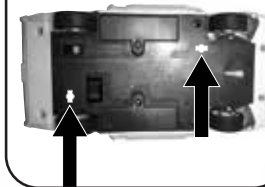
- | | | | |
|---------------------------------------|--------------------|----------------------|--------------------|
| A. 1 RC Wheels Vehicle | D. 1 Pair of Shoes | H. 1 Pair of Glasses | K. 1 Accessory |
| B. 1 Remote Control | E. 1 Outfit | I. 1 Fanny Pack | L. 1 Doll Stand |
| C. 1 Limited Edition
Downtown Doll | F. 1 Visor | J. 1 Bottle | M. 1 Sticker Sheet |
| | G. 1 Hair Brush | | |



Illustrations are for reference only. Styles may vary from actual contents.

NOTE

Turn the key locks under the platform to release the vehicle from packaging. Discard keylocks and all other packaging materials before giving to a child.

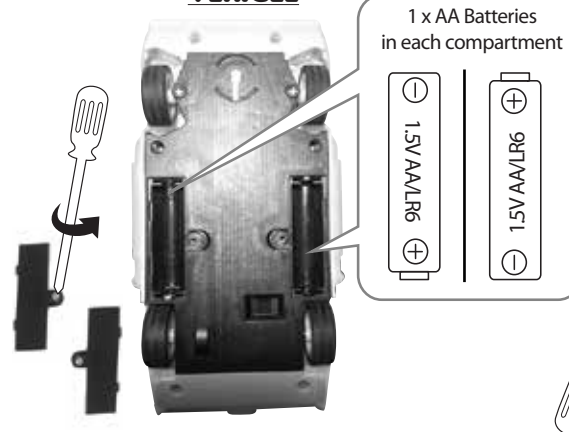


BATTERY INSTALLATION

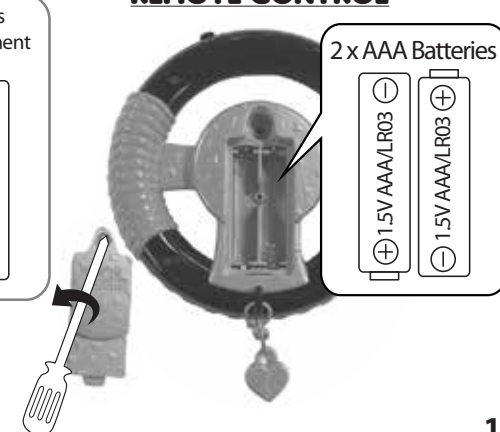
Before beginning, an adult must install fresh alkaline batteries in the vehicle and remote control. Here's how:

1. Using a Phillips screwdriver (not included), remove the screws and battery compartment covers located under the vehicle and on the back of the remote control.
2. Install two (2) fresh 1.5V AAA (LR03) alkaline batteries (not included) in the remote control, making sure the (+) and (-) ends face the proper direction as indicated inside the battery compartment.
3. Install two (2) fresh 1.5V AA (LR6) alkaline batteries (not included) in the vehicle, making sure the (+) and (-) ends face the proper direction as indicated inside the battery compartment.
3. Replace the compartment covers and tighten the screws.

VEHICLE



REMOTE CONTROL



PAIRING VEHICLE AND REMOTE CONTROL

Before driving, pair the vehicle and remote control. Here's how:

1. Move the switch under the vehicle from the "OFF" (O) position to the "ON" (I) position. (Fig. 1)
2. Move the switch on top of the remote control from the "OFF" (O) position to the "ON" (I) position. (Fig. 2)
3. The vehicle and remote control are paired when the vehicle's front wheels turn as you turn the remote.
4. The vehicle and remote control must be re-paired after turning the switches off and on again.

Fig. 1

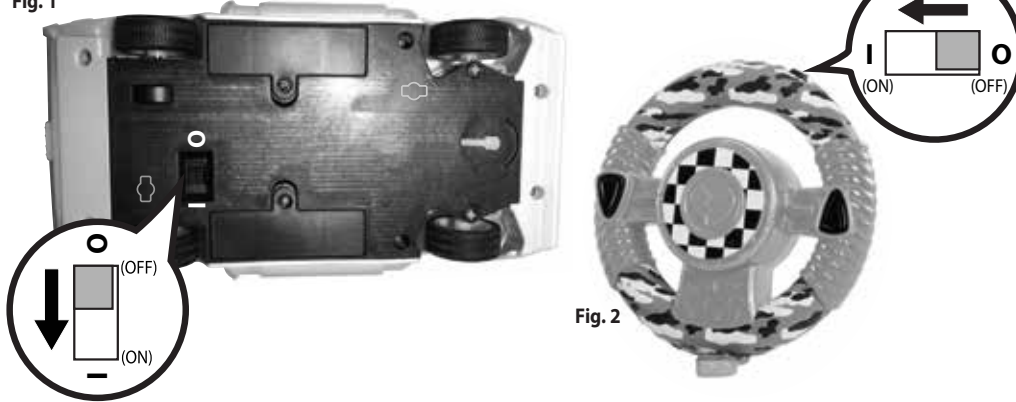
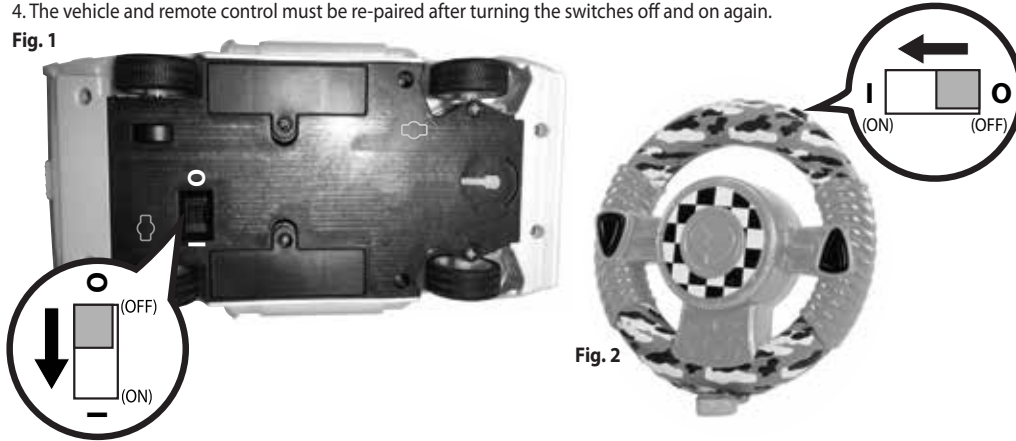


Fig. 2

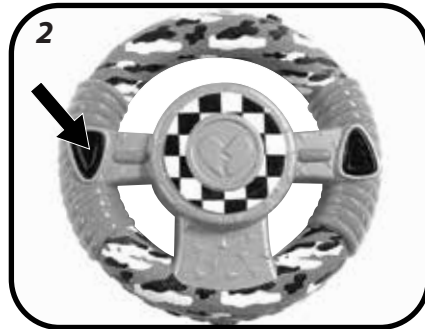


DRIVING LESSONS

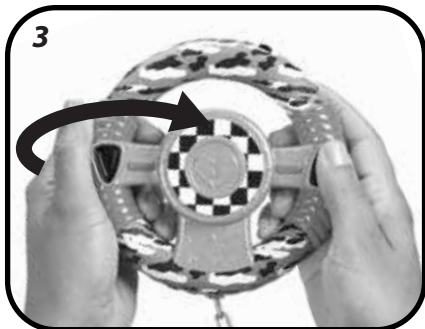
Place the vehicle on a hard, flat surface in a large, open area and follow the steps below to drive the vehicle.



Press and hold the right button to drive the vehicle forward.



Press and hold the left button to drive the vehicle in reverse.



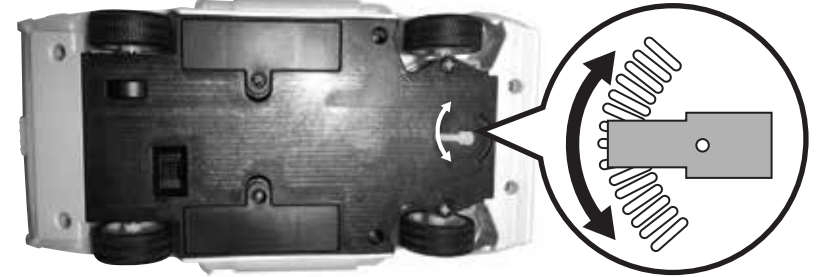
Lift the wheel from the left side. While keeping the wheel in position, press and hold the left or right button. The vehicle will go forward or reverse to the left.



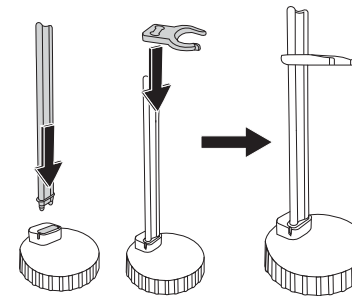
Lift the wheel from the right side. While keeping the wheel in position, press and hold the left or right button. The vehicle will go forward or reverse to the right.

ADJUSTING THE ALIGNMENT

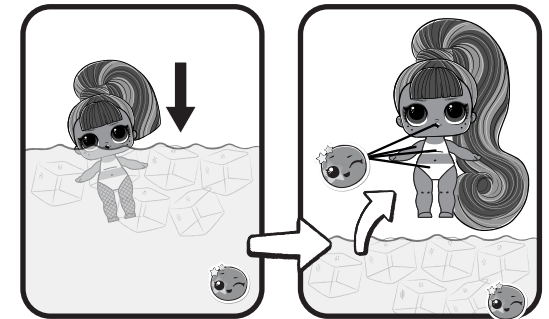
If the vehicle is driving to one side while the remote is straight, adjust the alignment by moving the switch under the vehicle to the left or right.



DOLL STAND ASSEMBLY



DOLL FEATURE



DOLL AND COLOR CHANGE INFORMATION

- Before beginning, cover the play area to protect from possible water damage.
- Color change will start at approximately 59°F (15°C), but best results occur if the ice water is chilled to approximately 32°F (0°C) or colder.
- Color change will only work on certain parts of the doll's body.
- If color change does not work properly or quickly, the temperature of the doll's body may be too close to the temperature of the water.
- Color change temperatures may vary according to weather conditions.
- The color-change effect has a lengthy, but limited lifespan.
- An adult must be present when children are playing with water.
- Do not store the doll in direct sunlight for extended periods of time.
- Do not get the doll's hair wet. Do not submerge doll's hair in water. If hair gets wet, air dry only. Do not subject doll's hair to heat.

CAR INFORMATION

- Do not play with vehicle in the street, where there is vehicular traffic, or in heavily traveled areas with pedestrians.
- Do not stand on, sit or throw the vehicle or remote control, as doing so can result in injury to the person and irreparable damage to the units.
- Do not run the vehicle into furniture, walls, pets, people, etc., as doing so may cause injury to the person and irreparable damage to the unit.
- Only one doll fits in the vehicle and should be wearing the included shoes for best fit.
- Avoid driving the vehicle through water, mud, etc.
- Keep long hair and loose apparel, such as shoestrings, away from the rotating wheels.
- It is recommended to drive the vehicle on hardwood flooring.
- Keep the remote control in range to operate vehicle correctly.
- If the vehicle stops working or doesn't work as it should, turn off remote and vehicle and pair again. If there is still a problem, replace the batteries.
- When not playing, turn the vehicle and remote control off to conserve battery power.
- Only apply stickers to the vehicle, as adhesive may not be fully removed from other surfaces.
- Wipe the unit with a damp cloth to clean. To shine the finish on the vehicle, use a dry microfiber cloth. Keep moisture away from the battery compartment.
- Frequency band range is 2.420 - 2.462 GHz.
- Maximum radio-frequency power (for EU compliance) of the Remote control is -9.70dBm, for Vehicle is -22.86dBm.
- Maximum controlling distance: Approximately 100 ft. (30m).