

## FCC STATEMENT

### FCC Compliance

NOTE: This equipment has been tested and found to comply with the limits for Class B digital device, pursuant to Part 15 of FCC Rules. These limits are designed to provide reasonable protection against harmful interference in a residential installation. This equipment generates, uses and can radiate radio frequency energy and, if not installed and used in accordance with the instructions, may cause harmful interference to radio communications. However, there is no guarantee that interference will not occur in a particular installation. If this equipment does cause harmful interference to radio or television reception, which can be determined by turning the equipment off and on, the user is encouraged to try to correct the interference by one or more of the following measures:

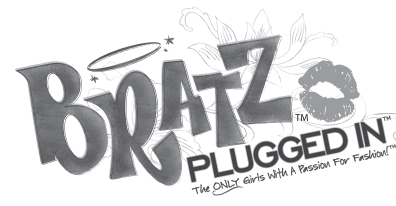
- Reorient or relocate the receiving antenna.
- Increase the separation between the equipment and receiver.
- Connect the equipment into an outlet on a circuit different from that to which the receiver is connected.
- Consult the dealer or an experienced radio/TV technician for help.

This device complies with Part 15 of the FCC Rules. Operation is subject to the following two conditions: (1) This device may not cause harmful interference, and (2) this device must accept any interference received, including interference that may cause undesired operation.

Warning: Changes or modifications to this unit not expressly approved by the party responsible for compliance could void the user's authority to operate the equipment.

The Transmitter carrier frequency is 98.5 MHz and the field strength is 166  $\mu\text{V}/\text{m}$  at the measurement distance of 3m.

This radiocommunication device complies with all the requirements of Industrial Canada Standard IC RSS-210.



# ROCK STAR HEADSET

AGES 6+

Item no. 365488S8, 365488S8C

ADULT BATTERY INSTALLATION REQUIRED.

## INTRODUCTION

Look and sound like a rock star with this awesome headset microphone! Just attach your MP3 player to the transmit module and hook it to your belt. Both your MP3 player's music and your voice will come out through the radio together! Sing along with your fav MP3's and belt it out like the pros!

## CONTENTS

- 1 Bratz™ Plugged-In Headset Boom Mic
- 1 Audio Cable
- 2 x AAA Heavy Duty Batteries
- 1 Microphone Transmit Module with the following parts:
  - a) MP3 Player Holder
  - b) On/Off Switch
  - c) Microphone Volume Dial
  - d) Audio In Volume Dial
  - e) MP3/Audio Input Jack
  - f) Headset Input Jack
  - g) Antenna
  - h) Belt Clip

NOTE: MP3 Player and FM radio not included.

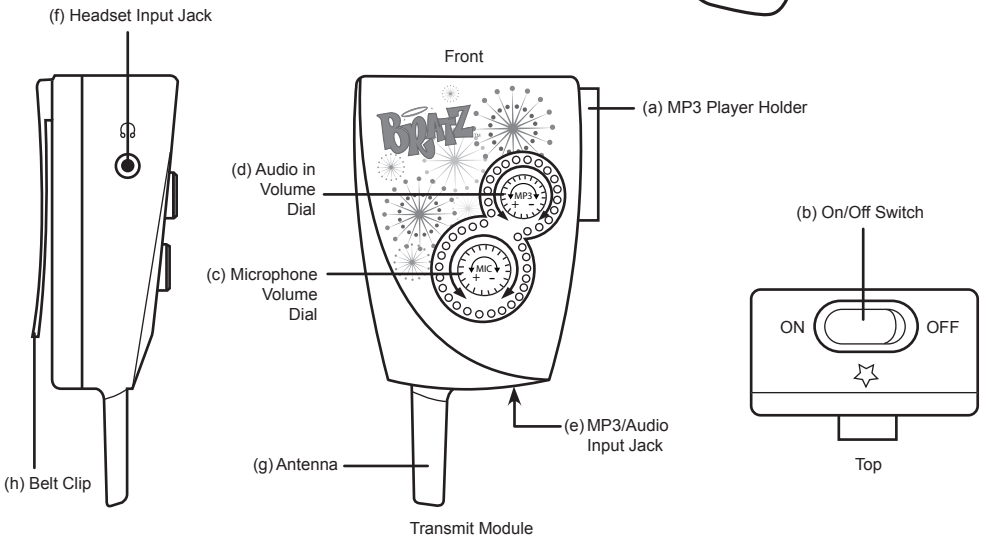
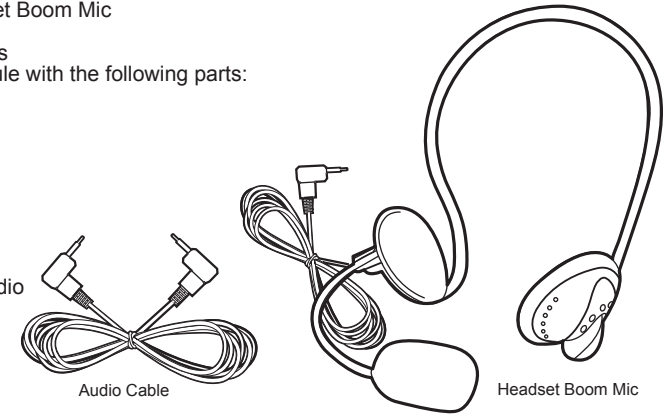


Illustration may vary from actual contents.



'Let's care for the environment!'

The wheelie bin symbol indicates that the product must not be disposed of with other household waste. Please use designated collection points or recycling facilities when disposing of the item.

Do not treat old batteries as household waste. Take them to a designated recycling facility.

Please keep this manual as it contains important information.



1007-0-E

www.bratz.com  
 TM & © MGA Entertainment, Inc.  
 BRATZ™, BRATZ PETZ™, LIL' BRATZ™,  
 BRATZ BABYZ™, BRATZ KIDZ™ and all  
 related logos, names, characters,  
 distinctive likenesses and slogans,  
 as well as the packaging and images  
 appearing thereon, are the  
 exclusive property of MGA.  
 16300 Roscoe Blvd.  
 Van Nuys, CA 91406 USA  
 (800) 222-4685  
**Printed in China.**

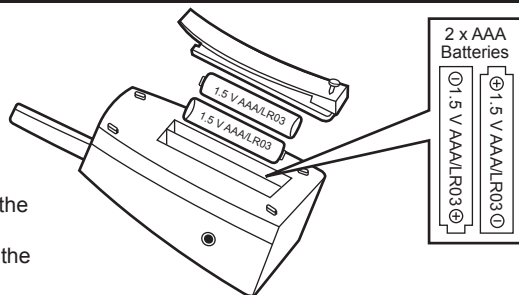
The preferred method of contact for  
 Customer Service is through our e-mail  
 contact form at [www.mgae.com](http://www.mgae.com)



## BEFORE YOU BEGIN

Ask an adult to help you install batteries by following these easy steps:

1. Using a Phillips screwdriver (not included) remove the screw and battery compartment cover from the back of the Transmit Module.
2. Install two (2) 1.5V AAA **fresh** batteries (included) making sure the (+) and (-) ends face the proper direction as indicated inside the battery compartment.
3. Replace the compartment cover and tighten the screw.



## QUICK START

1. Attach your MP3 Player (not included) to the Holder on the side of the Transmit Module. If your MP3 Player does not fit in the holder, you can clip it to your belt or place it in a pocket.
2. Attach the Audio Cable to the Headphone Jack of your MP3 Player.
3. Attach the other end of the Audio Cable to the Audio Input Jack on the Transmit Module.
4. Plug the Headset cord into the Headphone Jack of the Transmit Module. Your Headset Microphone and MP3 player should be connected as shown. (Fig. 1).

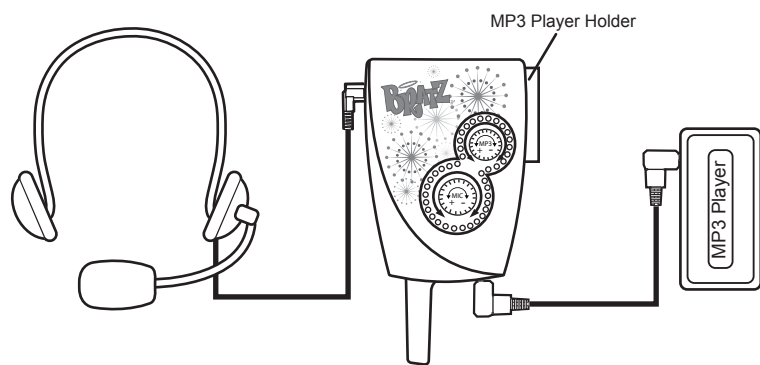


Fig. 1

5. Clip the Transmit Module to your belt or waistband.
6. Place the Headset on your head and adjust it to fit. (Fig. 2).

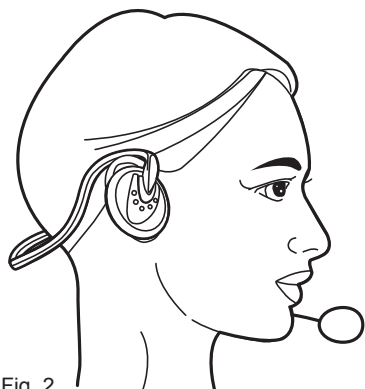


Fig. 2

7. On the Transmit Module, turn the On/Off Switch to ON.
8. Turn on a nearby radio (not included) and select the FM band.
9. Tune your radio to 100MHz FM. If there is a radio station at 100MHz with a strong signal, it may overpower your microphone. If so, move the tuner slightly to either **99** or **101** MHz.
10. Hold your headset microphone close to the radio while your radio is tuned to about 100MHz.
11. Turn on your MP3 Player and play your favorite music track. You will hear it through the radio!
12. Talk through your headset microphone and your voice will also come through the radio!
13. **Slowly increase volume by turning the Microphone Volume Dial and the Audio-In volume counter-clockwise until both are at a comfortable listening level.**
14. Now you can sing into your microphone and you will hear your voice through the radio along with music from your MP3 Player! Rock on!

**NOTE:** The radio volume should not be set to maximum. This may cause either a sharp “Feedback” whistle or dead silence from the radio.

## IMPORTANT NOTES

- Your FM Microphone has been fully tested and adjusted prior to shipment. Do not attempt to touch, replace or service any of components inside.
- After use, turn your microphone OFF to save the batteries.
- Under an environment with electrostatic discharge, this product may malfunction and require the user to reset the unit by changing the batteries.
- Your FM microphone must be within 30 feet (**approx. 10 meters**) of your FM radio for optimal reception.
- If you need to get closer to the radio in order to get a signal, replace the batteries.

**⚠ WARNING:** Damage to your hearing from loud noise is often not apparent until it is too late. Often this kind of damage is irreversible.

To help establish a safe “Listening Level” with your headset, please use the following guidelines:

1. Start with the volume setting all the way down.
  2. Slowly increase it to a comfortable level.
  3. Make note of the level on your dial for future reference.
  4. Avoid prolonged exposure to excessive noise.
- Making these adjustments now will help keep your hearing healthy.

## SAFE BATTERY USAGE

- Use alkaline batteries for best performance and longer life.
- Use only the type battery recommended for the unit.
- Batteries should be replaced only by an adult.
- Insert batteries with the correct polarity ( + and - ).
- **Do not mix old and new batteries.**
- **Do not mix alkaline, standard (carbon-zinc), or rechargeable (nickel-cadmium) batteries.**
- Do not short-circuit batteries.
- When not used for an extended time, remove batteries to prevent possible leakage and damage to the unit.
- Do not mix rechargeable and non-rechargeable batteries.
- Rechargeable batteries are to be removed from the toy before charging.
- Rechargeable batteries are to be recharged only under adult supervision.
- Do not recharge non-rechargeable batteries.
- Exhausted batteries are to be removed from the toy.
- Do not dispose of batteries in fire as they may leak or explode.

**DISPOSAL OF BATTERIES:** Do not treat old batteries as household waste. Take them to a designated recycling facility.

**NOTE:** The voltage of a fully-charged, rechargeable battery is often lower than that of a fresh alkaline battery. Therefore, it is recommended that alkaline batteries be used instead of rechargeable batteries for best performance and for longest play time.