

TROUBLE SHOOTING

IF THERE IS NO FUNCTION BETWEEN THE REMOTE CONTROL HANDSET AND THE RACER:

- Make sure you have turned ON the Remote Control.
- Make sure your MBR racer is fully charged.
- Check that the batteries are inserted properly.
- Replace the old batteries with new alkaline batteries.
- Move the remote control handset closer to your MBR to determine the best communication between the Remote Handset and the Racer. (The operating range is approximately 6 to 8 feet.)

IF YOUR MBR RACER FAILS TO CHARGE:

- Make sure the batteries have been inserted properly.
- Make sure the batteries are fresh; if not, replace with new, alkaline batteries.
- Make sure you have connected your MBR onto the External Charging Unit's Charging Connector securely and so that the contact on the bottom of your racer are connected to the contacts on the top of the Charger.

HELPFUL HINTS

- Do not operate during thunderstorms.
- Avoid water when racing your MBR. In addition, do not submerge your Racer, Charging Unit or Handset in water.
- When your vehicle starts to lose power, it may experience loss of performance ability. If this happens, simply recharge your MBR again.
- Your MBR is operated by radio waves. It is possible the unit may not perform properly due to interference from nearby devices such as a cordless phone, hair dryer, radio, walkie-talkie or other radio-controlled toys.
- Avoid sand and snow when operating your vehicle.
- Always select a safe place to play. Never drive your vehicle on populated streets.
- Keep fingers, hair and loose clothing away from the tires, wheel hubs and motors while the vehicle is switched on.

SAFE BATTERY PRECAUTIONS

- Do not dispose the batteries in fire; batteries may leak or explode.
- Different types of batteries or new and used batteries are not to be mixed.
- Only batteries of the same or equivalent type as recommended are to be used.
- The supply terminals are not to be short-circuited.
- Non-rechargeable batteries are not to be recharged.
- Rechargeable batteries are only to be charged under adult supervision.
- When not in use for an extended time, remove batteries to prevent possible leakage.
- Batteries are to be inserted with the correct polarity.
- Exhausted batteries are to be removed from the toy.
- Batteries should be replaced by adult.

IMPORTANT:

- MODIFICATIONS NOT AUTHORIZED BY THE MANUFACTURER MAY VOID USER'S AUTHORITY TO OPERATE THIS DEVICE.
- EMISSIONS OR INTERFERENCE OF SURROUNDING ELECTRONIC EQUIPMENT MAY AFFECT OPERATING PERFORMANCE.

CAUTION:

- Do not use rechargeable batteries for the Remote Control Handset and/or the External Charger.
- Not suitable for children under 3 years.
- May contain small parts.

NOTES:

This equipment has been tested and found to comply with limits for a Class B digital device, pursuant to Part 15 of the FCC Rules. These limits are designed to provide reasonable protection against harmful interference in a residential installation. This equipment generates, uses and can radiate radio frequency energy and, if not installed and used in accordance with the instruction, may cause harmful interference to radio or television reception, which can be determined by turning the equipment off and on, the user is encouraged to try to correct the interference by one or more of the following measures:

- Reorient or relocate the receiving antenna.
- Increase the separation between the equipment and receiver.
- Connect the equipment into an outlet on a circuit different from that to which the receiver is connected.
- Consult the dealer or an experienced radio/TV technician for help.

PLEASE KEEP THIS INSTRUCTION SHEET SINCE IT CONTAINS IMPORTANT INFORMATION.

TM & © 2003 MGA Entertainment ®
All Rights Reserved.
16730 Schoenborn St.,
North Hills, CA 91343 USA
(800) 222-4685

Printed in China

0603-0



MGA
ENTERTAINMENT®

MICROBLAST™

RAGERS
AMAZING SUPER SPEED!

AGES 6+

They may be small, but they've got BIG power! These full-functional, radio-controlled racers are everything you'd expect in an R/C vehicle ten times the size, but unlike the bigger vehicles, you can race these cars nearly anywhere! Whether it's on tabletops or driveways, experience high-speed racecar fun any time you want! Available in two radio frequencies and different racing motorcycle styles for true competitive racing action, these racers are sure to take off--BIG TIME!

QUICK START

STEP 1: BATTERY INSTALLATION

-Radio Control Handset

1. Switch the power to "OFF".
2. Unscrew the battery compartment cover located on the back of the handset with a Phillips screwdriver and remove. (see Fig. 1)
3. Insert 2 AA (1.5V) Alkaline batteries in the proper direction as indicated inside the battery compartment. (see Fig. 1)
4. Replace the battery cover & tighten screw securely.
5. Switch the power to "ON".

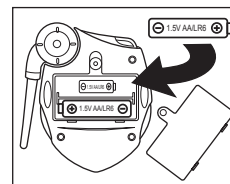


Figure 1

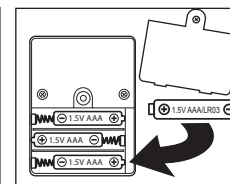


Figure 2

-External Charger

1. Unscrew the battery compartment cover with a Phillips screwdriver & remove. (see Fig. 2)
2. Insert 2 AAA (1.5V) Alkaline batteries in the proper direction as indicated inside the battery compartment. (see Fig. 2)
3. Replace the battery cover & tighten screw securely.

STEP 2: CHARGING YOUR MBR

1. Place your Micro Blast Racer onto the External Charger's Charging Connector, and secure it into place so that the contacts on the bottom of the vehicle connect with the contacts on the Charger. (see Fig. 3)
2. Press the CHARGE button once to charge your MBR for approximately 55 seconds. (see Fig. 3)

NOTE: The Charging Indicator on the Charger will light up only when the racer is charging.

3. Remove your MBR from the External Charger and place it on the ground for racing.

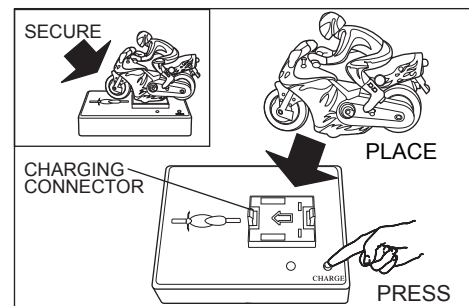


Figure 3

STEP 3: RACING YOUR MBR

1. Switch the Remote Control Handset to "ON".
2. Extend the Antenna. (see Fig. 4).
3. Push the FORWARD, BACKWARD, LEFT and RIGHT buttons to race your MBR in any direction! (see Fig. 5,6)
4. The TX output indicator light on the handset will turn on only when you push the buttons.
5. After approximately 2 minutes, your MBR will begin to lose its power. Simply follow the steps outlined in the 'Charging Your MBR' section to recharge your MBR and race again!

Race the 27 MHz Micro Blast Racers Against the 49 MHz racers for awesome competitive racing action!

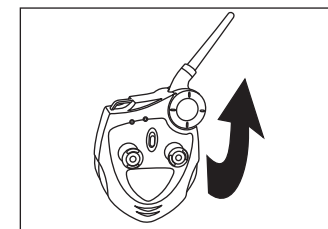


Figure 4

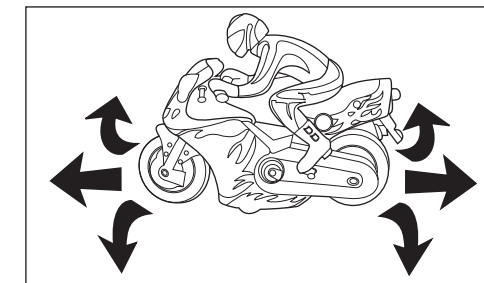


Figure 5

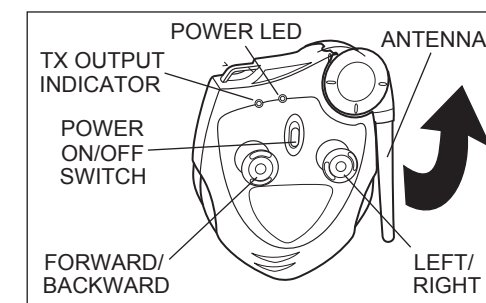


Figure 6