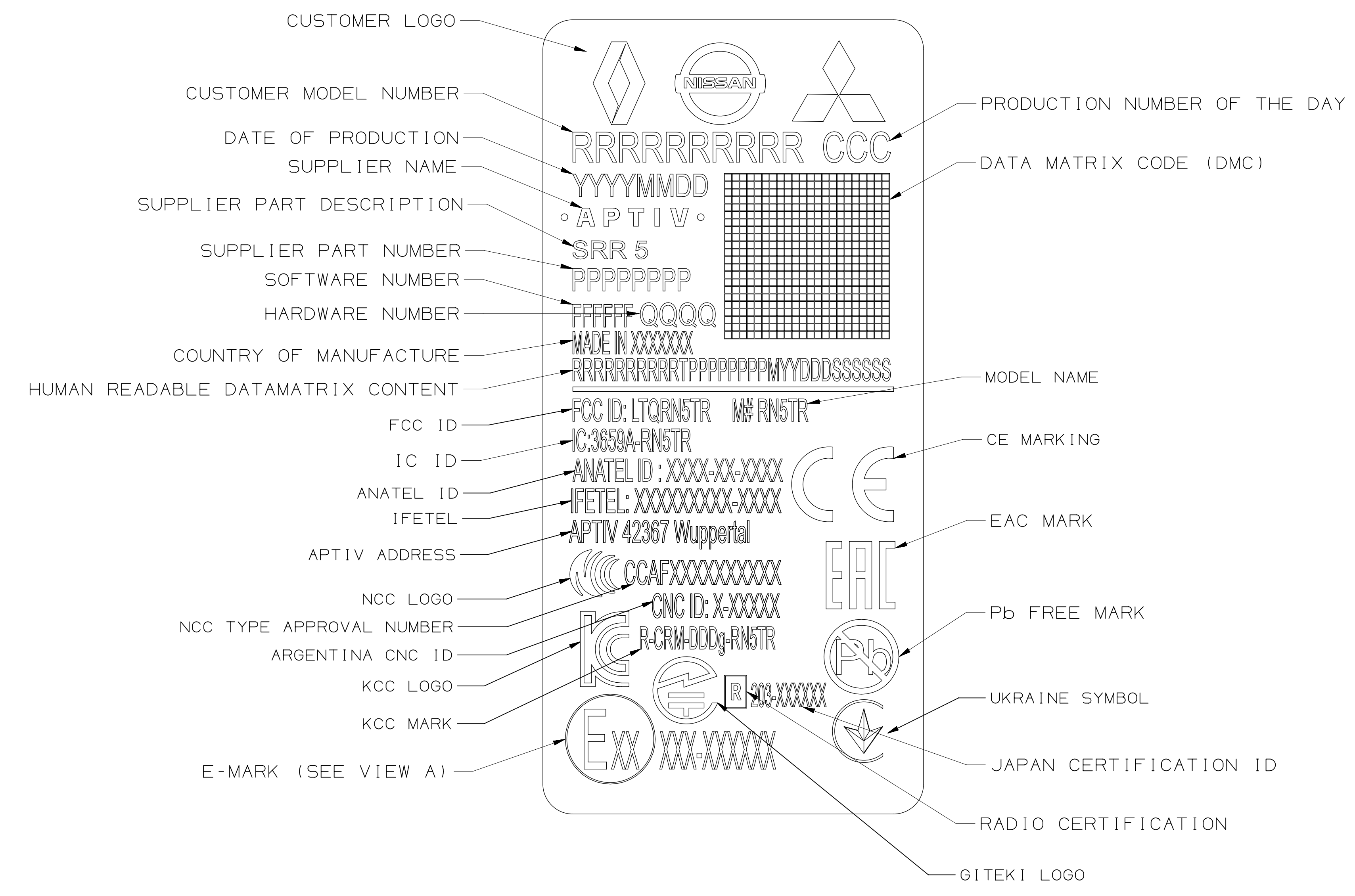


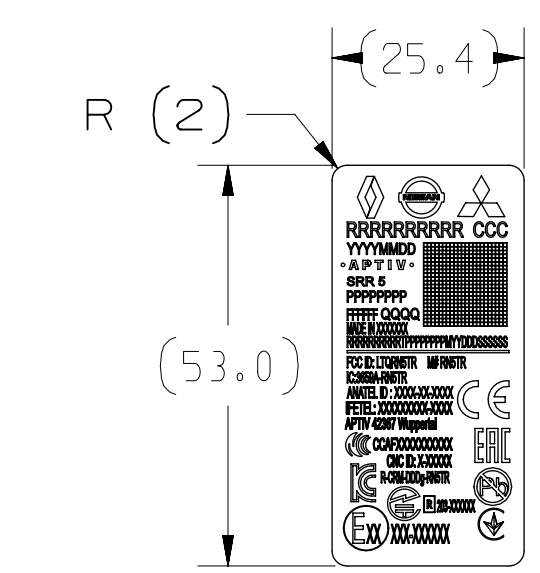
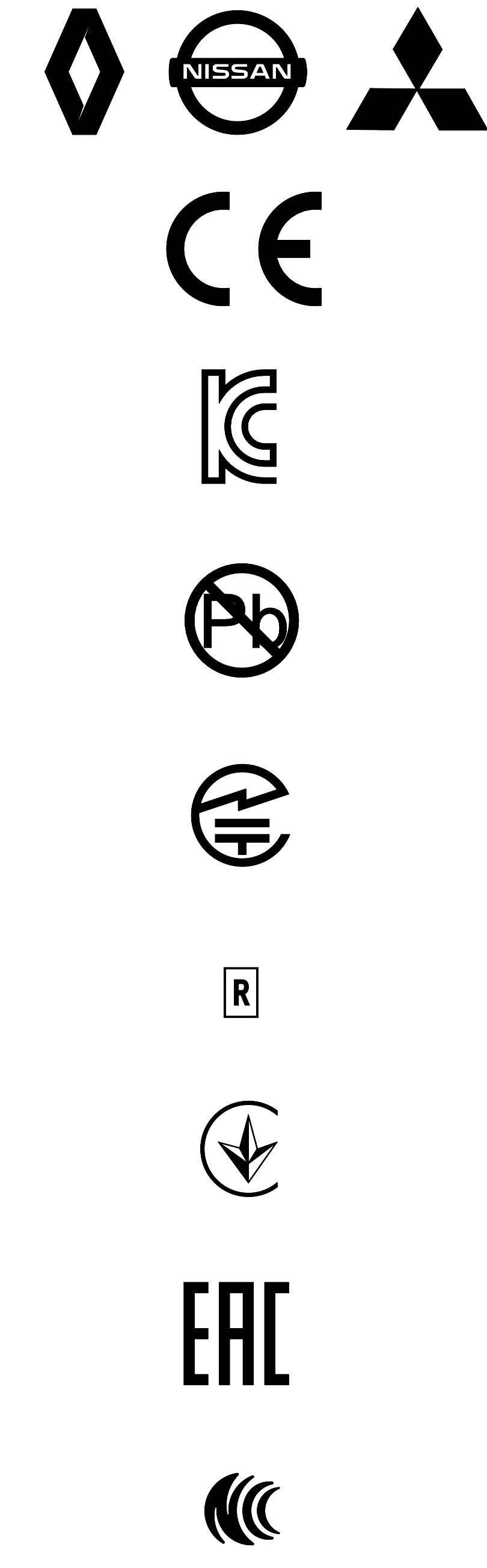
ITEM	PART NO.	DESCRIPTION	QTY
1	16236840	LABEL-BLANK	1
2	00088829	RIBN 2.36 (59.9MM)	1

DESIGNATED CHARACTERISTICS				OCI	KPC			
0	LAST NO USED	K OR Q IN SYMBOL INDICATES CHECKPOINT	FIT/FUNCTION	C1	FF			
0	0	TOTAL ON DRAWING	SAFETY/COMPLIANCE	SC				
KPC	OCI	NO	TYPE	DESCRIPTION	RATIONALE	ZONE	SH	PTS

DWG STATUS				REVISION HISTORY				AUTH	DR	APVD	APVD
DATE	STG	REV	N/P	CHK	ZONE	RELEASED-PROTOTYPE	10806	MAD	IRE	2	
29MR18		A				RELEASED-PROTOTYPE	36742				
01FE19		B				UPDATED LABEL CONTENT	10806.3	MAD	LTU	6742	

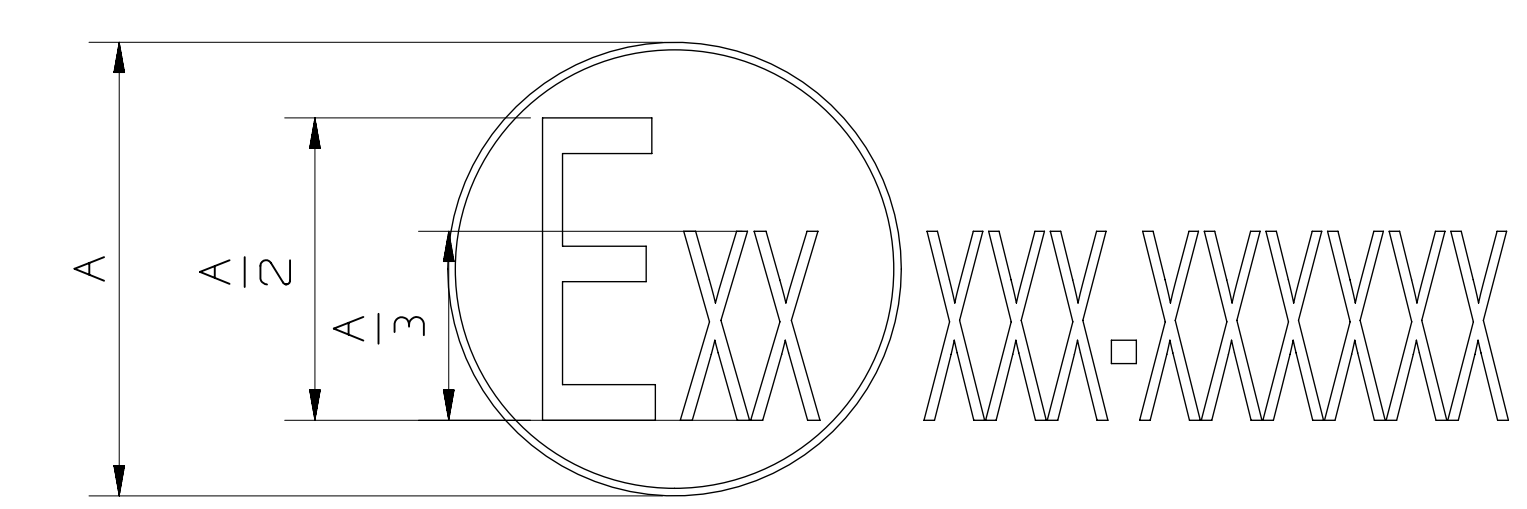


LOGOS FOR PRINTING DOWNLOAD  
SCALE 5:1



FIELD	VALUE
CUSTOMER MODEL NUMBER	SEE END MODEL DRAWING
APTIV MODEL NUMBER	SEE END MODEL DRAWING
COUNTRY OF MANUFACTURE	SEE END MODEL DRAWING
PLANT CODE	SEE END MODEL DRAWING
FCC ID	LTQRN5TR
MODEL NAME	M# RN5TR
IC ID	3659A-RN5TR
ANATEL ID	SEE END MODEL DRAWING*
JAPAN CERTIFICATION ID	SEE END MODEL DRAWING*
IFETEL	SEE END MODEL DRAWING*
KCC MARK	R-CRM-DDDg-RN5TR
E-MARK	SEE END MODEL DRAWING*
ARGENTINA CNC ID	SEE END MODEL DRAWING*
NCC TYPE APPROVAL NUMBER	SEE END MODEL DRAWING*

\* IF NOT DEFINED ON END MODEL DRAWING LEAVE IT BLANK



A ≥ 6mm  
VIEW A

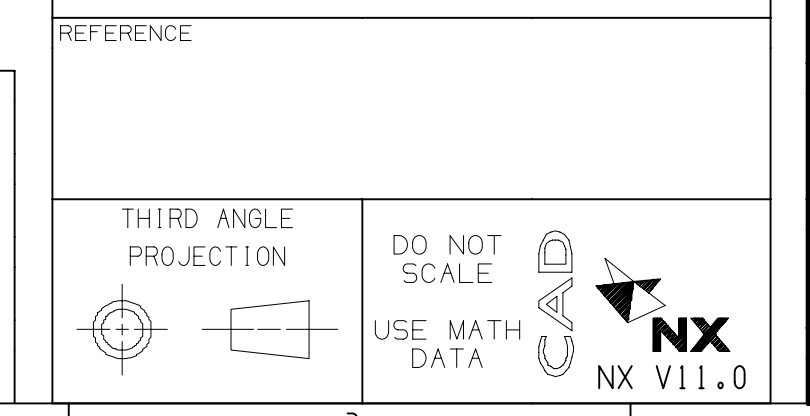
NOTES:

- DATA MATRIX CODE (ECC 200)  
ELEMENT SIZE 0.381mm  
SYMBOL SIZE TO BE 22x22 ELEMENTS  
THE MINIMUM QUIET ZONE 2 ELEMENTS AT ALL SIDES OF THE SYMBOL  
ACC. TO ISO/IEC 16022:200  
CONTENT:  
RRRRRRRRRTPPPPPPPMYYDDSSSSSS
- WHERE:  
RRRRRRRRR CUSTOMER PART NUMBER  
T SEPARATOR FIXED VALUE  
PPPPPPPP APTIV PART NUMBER  
M PLANT CODE  
YY YEAR OF PRODUCTION  
DD JULIAN DAY OF PRODUCTION  
SSSSS DAILY COUNTER, STARTED EVERY PRODUCTION DAY WITH 000001
- ALL PRINTED CHARACTERS ARE SHOWN FOR REFERENCE ONLY. PRINTED CHARACTERS SHALL BE IN HELVETICA BOLD FONT OR EQUIVALENT. (EXCEPT ARGENTINA CNC ID - PLEASE SEE VIEW B)
- ALL THERMAL TRANSFER CHARACTERS TO BE BLACK AND LOCATED IN THE AREAS SHOWN.
- ALL DIMENSIONS ARE FOR REFERENCE ONLY.
- PRINT LABEL INFORMATION TO THE APPROXIMATE LOCATION AND/OR DIMENSIONS AS SHOWN.
- APPROXIMATE HEIGHT OF ALL CHARACTERS EXCEPT STATED BELOW IS 2.0mm:  
- CUSTOMER PART NUMBER - 3.0mm  
- CERTIFICATION MARKINGS - 1.6mm
- THERE MUST BE A 2mm KEEPOUT ZONE BETWEEN THE EDGE OF THE LABEL AND ANY PRINTED TEXT OR GRAPHICS
- THE NAMES OF THE COUNTRY WHERE PRODUCT IS BUILT SHALL CORRESPOND TO THE COUNTRY NAMES IN ENGLISH NAME STATED IN ISO 3166
- DATE OF PRODUCTION YYYMMDD - WHERE DD IS DAY OF MONTH, MM - MONTH NUMBER, YYYY IS YEAR.

FIRST USED  
28618525A  
REFERENCE  
N/A  
REPLACES  
N/A  
REPLACED BY  
28618542

UNLESS OTHERWISE SPECIFIED  
THIS DOCUMENT IS IN ACCORDANCE WITH ASME Y14.5-2009, SEE APTIV ENGINEERING DESIGN STANDARD 86-2017 FOR ISO 1101:2004 RECONCILIATION REQUIREMENTS.

ALL DIMENSIONS ARE IN MILLIMETERS  
ZERO PLACE DECIMALS ±N/A  
ONE PLACE DECIMALS ±N/A  
TWO PLACE DECIMALS ±N/A  
THREE PLACE DECIMALS ±N/A  
ANGLES ±N/A DEGREE



**•APTIV•**

COPYRIGHT 2018 APTIV. ALL RIGHTS RESERVED.  
THIS DRAWING IS THE PROPERTY OF APTIV AND CONTAINS APTIV CONFIDENTIAL INFORMATION. THE REPRODUCTION, DISTRIBUTION AND UTILIZATION OF THIS DOCUMENT OR ITS RELATED CAD DATA, AS WELL AS COMMUNICATION OF ANY CONTENT TO OTHERS, WITHOUT EXPRESS AUTHORIZATION, IS PROHIBITED.

DATE	28FE18
DR	M.ADMCZYK
APVD1	T.REUT
APVD2	N/A
APVD3	N/A
APVD4	N/A
APVD5	N/A

SUBSTANCES OF CONCERN AND RECYCLED CONTENT PER APTIV (094900)

MATERIAL:  
N/A

DRAWING NAME:  
LABEL MAKE-ID SRR5 RNA

DRAWING NUMBER:  
DK319604

SIZE	SCALE	FRAME NO	SHEET NO	STO	REV	N/P
A0	(2:1)	1	OF 1	1	B	