

5.2 Field strength of the fundamental wave

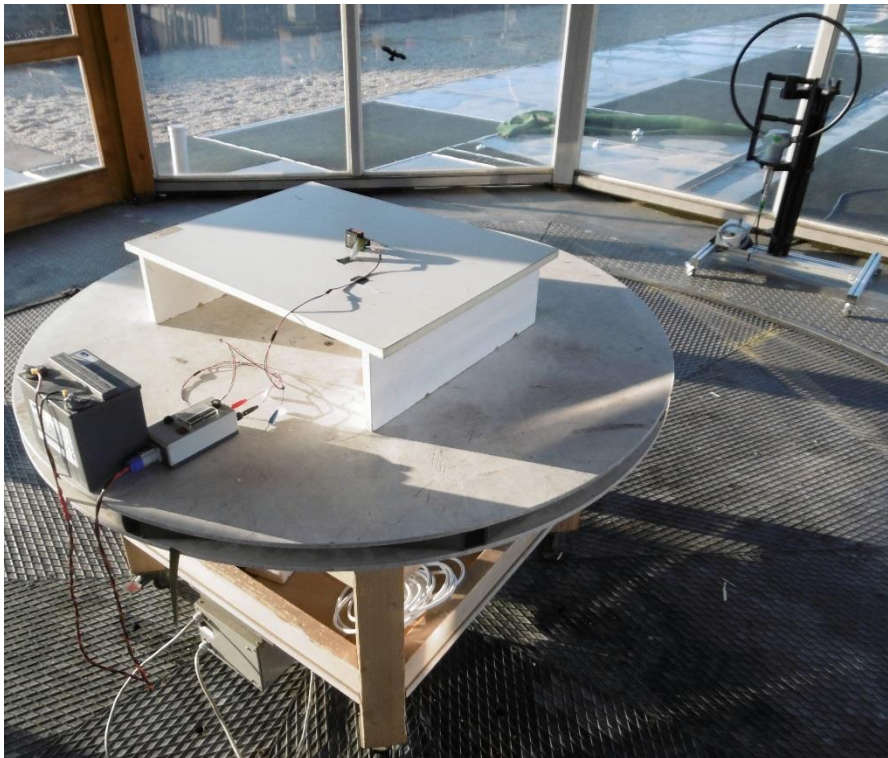
For test instruments and accessories used see section 6 Part CPR 1.

5.2.1 Description of the test location

Test location: OATS1

Test distance: 3 metres

5.2.2 Photo documentation of the test set-up



5.2.1 Applicable standard

According to FCC Part 15C, Section 15.209:

The emissions from intentional radiators shall not exceed the effective field strength limits.

5.2.2 Description of Measurement

The spurious emissions of the EUT have to be measured at an open area test site in the frequency range from 9 kHz to 1000 MHz using a tuned EMI receiver. The setup of the equipment under test will be in accordance with ANSI C63.4. The measurement has been performed at 3 m. The results have been compared to the limits defined at 30 m or 300 m distances according to FCC Part 15C, Section 15.31(f)(2) using an inverse linear distance extrapolation factor of 40 dB/decade. The final measurement has been performed with the EMI receiver using Quasi peak detector except for the frequency bands 9 kHz to 90 kHz and 110 to 490 kHz where an average detector will be used, according to Section 15.209(d).

The resolution bandwidth during the measurement is as follows:

9 kHz – 150 kHz:	RBW:	200 kHz
150 kHz – 30 MHz:	RBW:	9 kHz

5.3 Spurious emissions (magnetic field) 9 kHz – 30 MHz

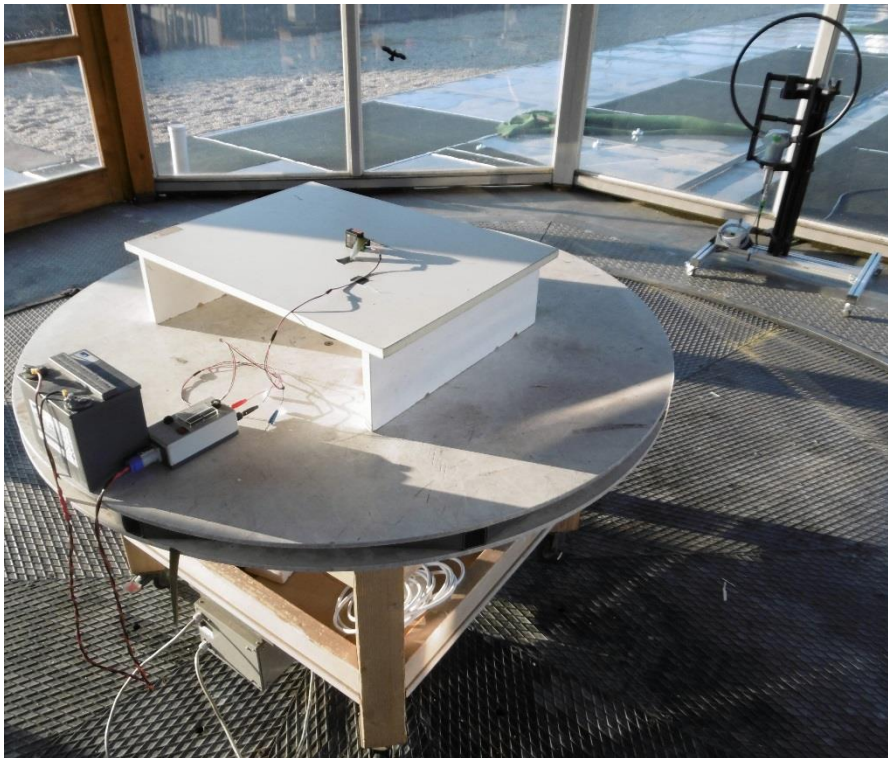
For test instruments and accessories used see section 6 Part SER 1.

5.3.1 Description of the test location

Test location: OATS1

Test distance: 3 metres

5.3.2 Photo documentation of the test set-up



5.3.3 Applicable standard

According to FCC Part 15C, Section 15.209:

The emissions from intentional radiators shall not exceed the effective field strength limits.

5.3.4 Description of Measurement

The spurious emissions of the EUT have to be measured at an open area test site in the frequency range from 9 kHz to 1000 MHz using a tuned EMI receiver. The setup of the equipment under test will be in accordance with ANSI C63.4. The measurement has been performed at 3 m. The results have been compared to the limits defined at 30 m or 300 m distances according to FCC Part 15C, Section 15.31(f)(2) using an inverse linear distance extrapolation factor of 40 dB/decade. The final measurement has been performed with the EMI receiver using Quasi peak detector except for the frequency bands 9 kHz to 90 kHz and 110 to 490 kHz where an average detector will be used, according to Section 15.209(d).

The resolution bandwidth during the measurement is as follows:

9 kHz – 150 kHz:	RBW: 200 Hz
150 kHz – 30 MHz:	RBW: 9 kHz

5.4 Spurious emissions radiated (electric field)

For test instruments and accessories used see section 6 Part SER 2.

5.4.1 Description of the test location

Test location: OATS1

Test distance: 3 metres

5.4.2 Photo documentation of the test set-up



5.4.3 Applicable standard

According to FCC Part 15C, Section 15.231(b), Section 15.209(a) and Section 15.205(a):
The emissions from intentional radiators shall not exceed the effective field strength limits.

5.4.4 Description of Measurement

The radiated power of the spurious emission from the EUT is measured in the frequency range of 30 to 1000 MHz using a tuned receiver and appropriate broadband linearly polarized antennas. Measurements between 30 MHz and 1000 MHz are made with 120 kHz/6 dB bandwidth and quasi-peak detection. Table top equipment is placed on a 1.0 X 1.5 m non-conducting table 80 cm above the ground plane. Floor standing equipment is placed directly on the turntable ground plane. The set up of the EUT will be in accordance to ANSI C63.4. The interface cables closer than 40 cm to the ground plane are bundled in the centre in a serpentine fashion so they are at least 40 cm away from the ground plane. Cables to simulators/testers are routed through the centre of the table to a screen room located outside the test area. To locate maximum emission from the test sample the antenna is varied in height from 1 to 4 m, measurement scans are made in horizontal and vertical antenna polarization and the EUT is turned 360 degrees.

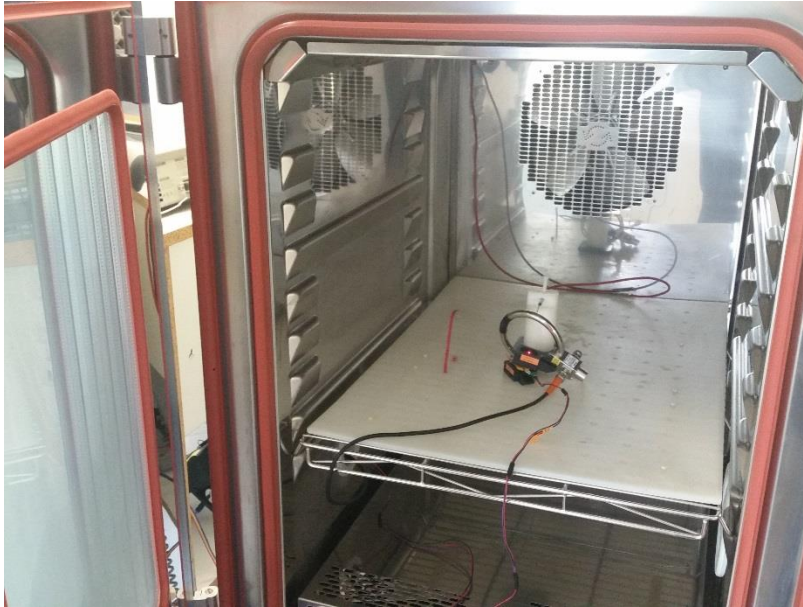
5.5 Emission Bandwidth

For test instruments and accessories used see section 6 Part MB.

5.5.1 Description of the test location

Test location: AREA4

5.5.2 Photo documentation of the test set-up



Fundamental [kHz] See Plot 1	20dB Bandwidth F1	20dB Bandwidth F2	Measured Bandwidth [kHz]
125.0	117.965625	132.365625	14.40

Remarks:
