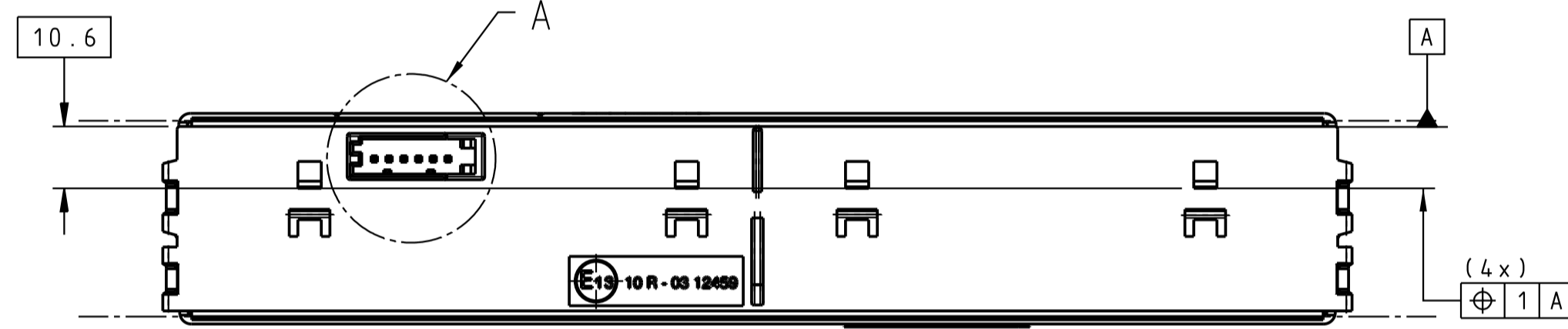
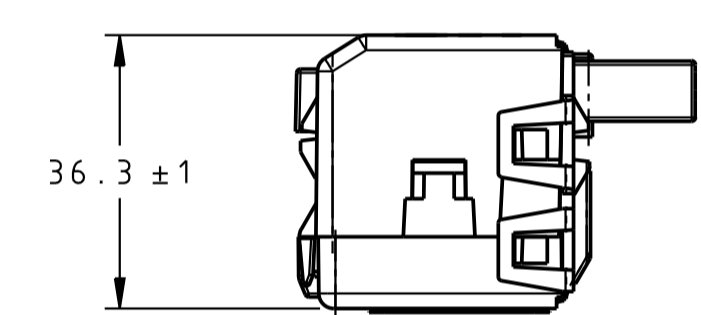
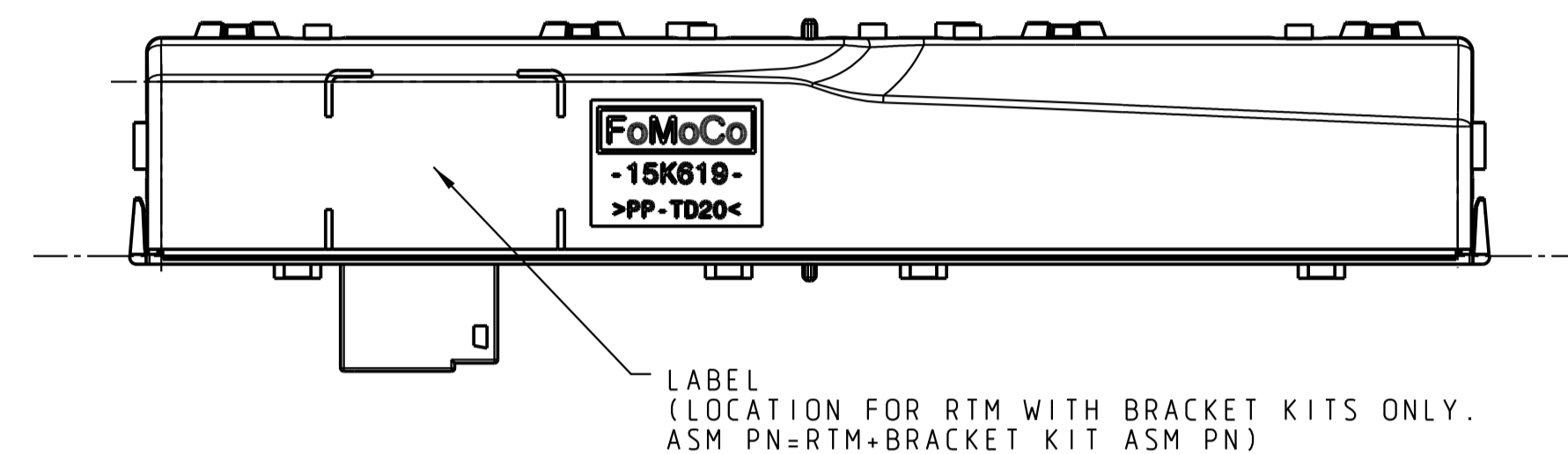
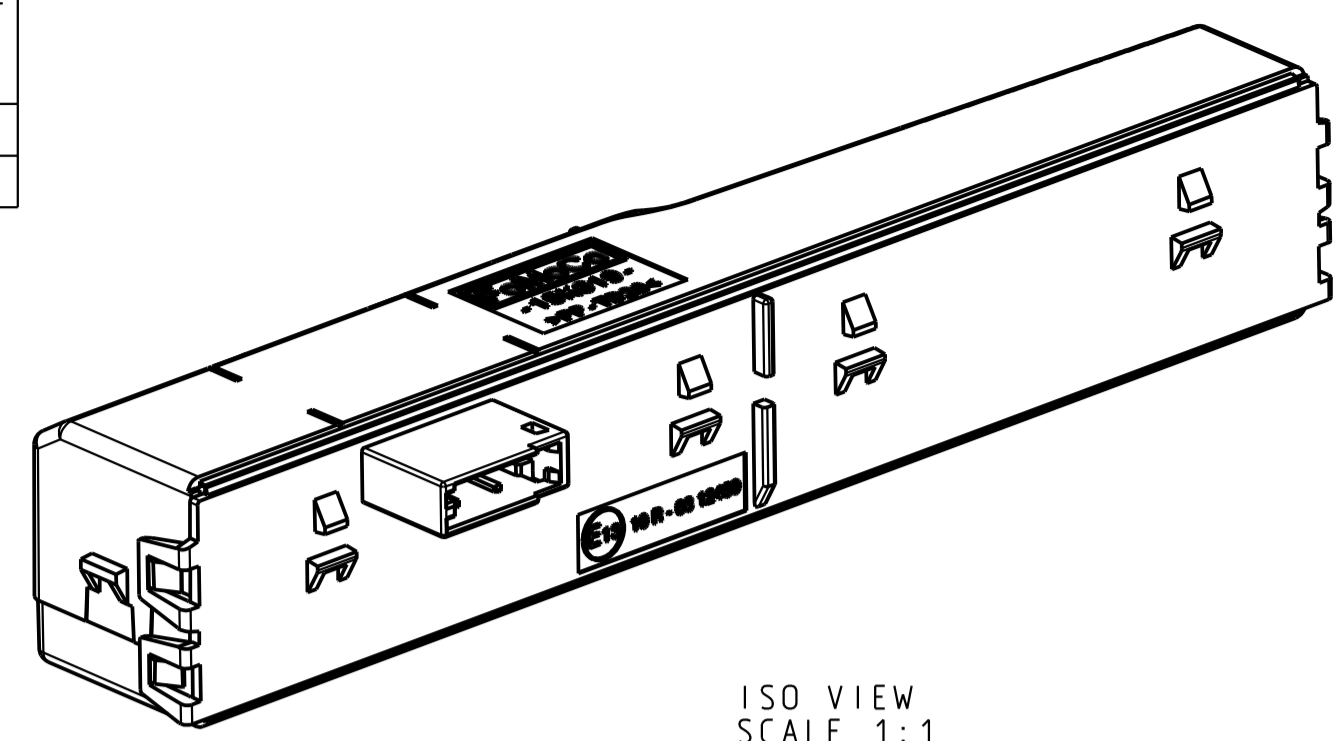
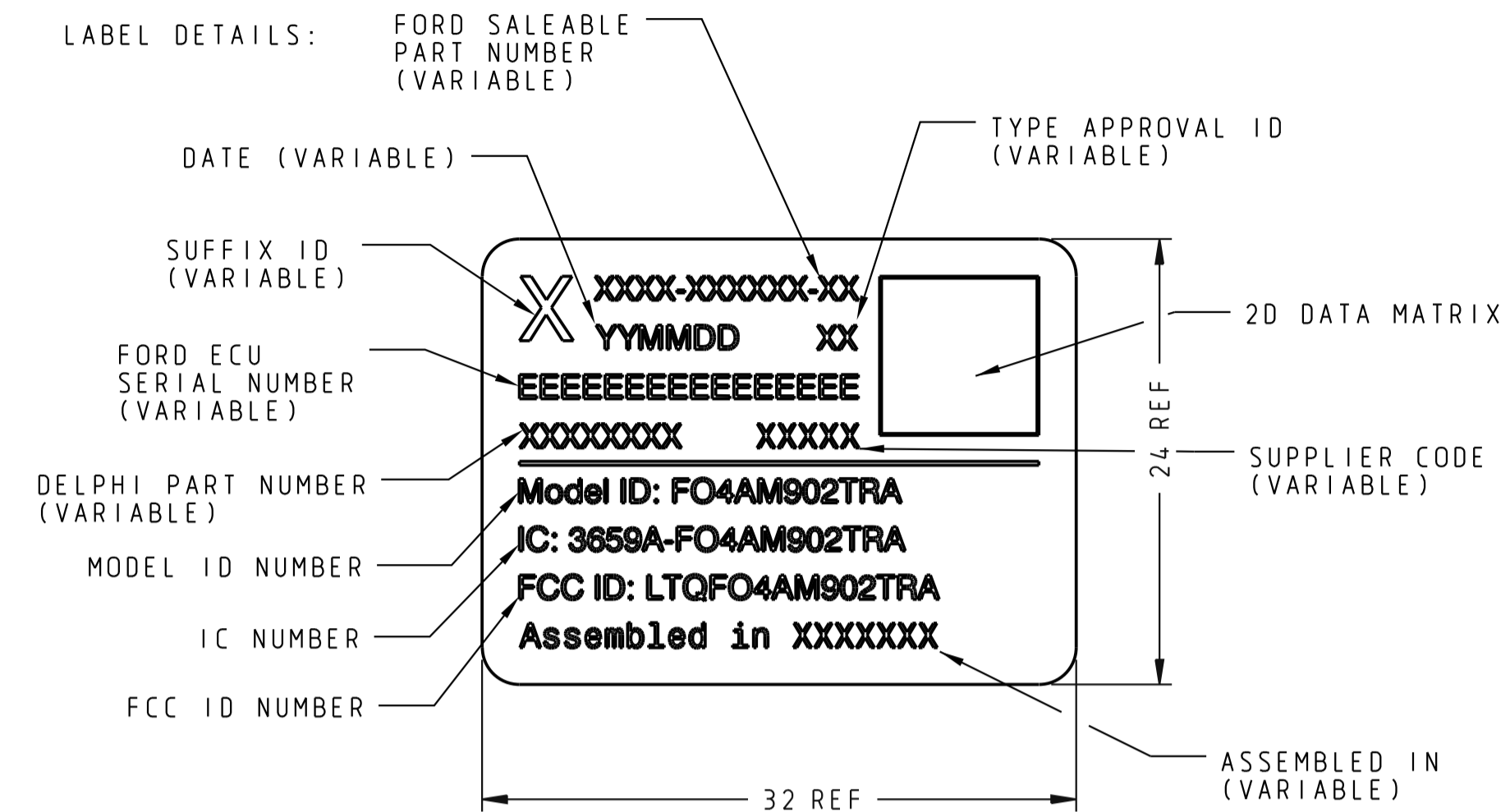
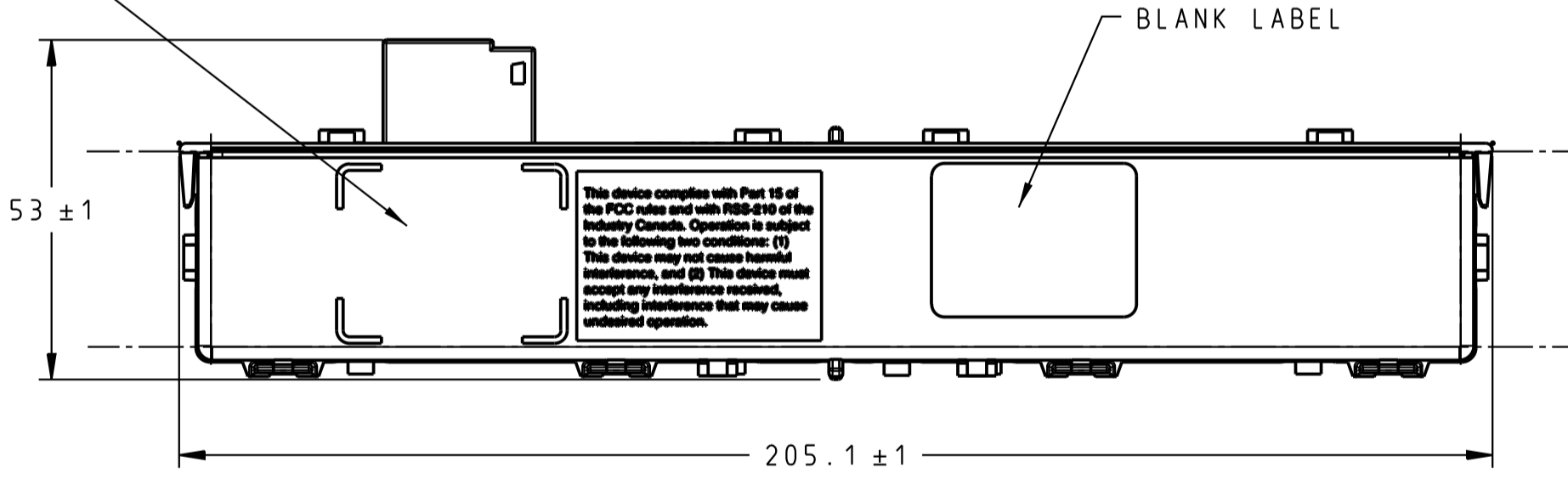


Description	ECU Assembly PN - \$F113	Core ASM PN - \$F111	ECU Software #2 \$F120	Primary Bootloader PN - \$F180	Main Strategy SW PN - \$F188	Secondary Bootloader (Note No DID access as this software does not come with the ECU assembly)	Part II Diagnostic Spec (\$F110)
RCVR ASM-RDO,RX/TX,902/315BI	GB5T-15K619-CC	GB5T-14G096-CA	GB5T-14G098-AB	GB5T-14G093-AA	GB5T-14G090-AC	DG9T-14G092-BA	DSGB5T-15K619-AC
RCVR ASM-RDO,RX/TX,868/434BI	GB5T-15K619-DC	GB5T-14G096-DA	GB5T-14G098-AB	GB5T-14G093-AA	GB5T-14G090-AC	DG9T-14G092-BA	DSGB5T-15K619-AC

LTRS				REVISIONS			
ORIGINATOR	CHECKER	ENGR APP	MATL APP				
RELEASED GB5T-15K619-CA / GB5T-15K619-DA				20140603			
AE00-E-12828179-000				20140603			
DELPHI	TSEMICH1	RMOVVHH1	MW20140603				
A1 UPDATED SOFTWARE				20141119			
RELEASED GB5T-15K619-CB / GB5T-15K619-DB				20141119			
AE00-E-12896965-000				20141119			
DELPHI	M-WICKH1	RMOVVHH1	MW20141119				
B1 UPDATED SOFTWARE				20150119			
B2 CHANGED LABEL				20150119			
RELEASED: GB5T-15K619-CC / GB5T-15K619-DC				20150119			
AE00-E-12941911-000				20150119			
DELPHI	TSEMICH1	RMOVVHH1	BK20150119				



LABEL (PLACED HERE FOR NON KIT ASSEMBLIES (RTM ONLY). ASM PN=RTM ASM PN)



MATING INTERFACE (HARNES CONNECTOR) TO BE USED
FORD P/N: 4F1T-14489-AC
TYCO P/N: 1488752-3
KEYING OPTION "C"

SIGNAL	CONNECTOR PIN	MAXIMUM CURRENT	TERMINAL SIZE
GND_LOGIC	1	N/A	64
KL_ING	2	50mA	64
PESCAN_L	3	70mA	64
PESCAN_H	4	70mA	64
UNUSED	5	N/A	N/A
BATT	6	240mA	64

REMARKS:
THE MASTER SOURCE OF INFORMATION OF THIS DRAWING IS IN A PE COMPUTER DATABASE. CHANGES ARE NOT PERMITTED WITHOUT PRIOR CONSENT OF THE RELEVANT ENGINEERING CAD ACTIVITY.
CHANGES AFFECTING DESIGN, COMPOSITION OR PROCESSING OF THE PART PREVIOUSLY APPROVED FOR PRODUCTION REQUIRE PRIOR APPROVAL FROM FORD PRODUCT ENGINEER REFER TO QS9000
ENGINEERING APPROVAL OF PRODUCTION SAMPLES FROM EACH SUPPLIER REQUIRE PRIOR TO AUTHORIZATION OF INITIAL PRODUCTION. FOR SAMPLES REQUIREMENTS SEE ENGINEERING RELEASE.
DIMENSIONS AND INSTRUCTIONS WHICH ARE NOT DEFINED ARE LEFT TO SUPPLIER'S DISCRETION PROVING THE FUNCTION OF THE PART IS NOT IMPAIRED.
FOMOCO TRADEMARK, CUSTOMER PART NUMBER, SUPPLIER CODE, SUPPLIER REF. NO., MATERIAL AND COUNTRY OF ORIGIN TO SPEC. S86BB-1K266-AA TO BE PLACED ON SUITABLE LOCATION. SIZE TO SUITE MANUFACTURER BUT MUST BE CLEARLY VISIBLE.

FOR CURRENT RELEASE STATUS SEE THE WERS ENGINEERING NOTICE.
NOT TO BE ISSUED OUTSIDE OF FORD / F.M.LTD / FORD-WERKE A.G. OR USED FOR MANUFACTURING PURPOSES WITHOUT THE APPROVAL OF FORD ELECTRICAL ENGINEERING.
PART MUST COMPLY WITH MATERIAL CONTROL BLACK / GREY BOX PROGRAM WSS-M99P23-C1-C2.
HOUSING MATERIAL: >PP-TD20< INNOPOL CS2-2120
COLOR: BLACK
WEIGHT: 75 g
REFERENCE THE FOLLOWING FORD ENGINEERING SPECIFICATIONS FOR THE RADIO TRANSCEIVER MODULE FUNCTIONAL/ OPERATION REQUIREMENTS:
- FS-GB5T-15K619-AB
- IS-GB5T-15K619-AB
REFERENCE FORD ENGINEERING SPECIFICATION, HS-GB5T-15K619-AA, FOR THE RADIO TRANSCEIVER MODULE ELECTRICAL/MECHANICAL/ENVIRONMENTAL REQUIREMENTS.

DIMENSIONAL RANGE [MM] / NENNMASSBEREICH [MM]	
FROM	0 >25 >50 >100 >250
TO	25 50 100 250 315
TOLERANCES UNLESS OTHERWISE SPECIFIED / ALLGEMEINTOLERANZEN	
	±0.35 ±0.5 ±0.75 ±1.25 ±1.6
ANGULAR TOLERANCE ±2° / WINKELTOLERANZ ±2°	

RCVR ASM-RDO,RX/TX,902/315BI	GB5T-15K619-CC
RCVR ASM-RDO,RX/TX,868/434BI	GB5T-15K619-DC

THIS DRAWING HAS BEEN PREPARED BY OR ON BEHALF OF FORD MOTOR COMPANY. FORD RETAINS ALL COMMON LAW, STATUTORY AND OTHER RESERVED RIGHTS, INCLUDING COPYRIGHTS. THIS DRAWING SHALL NOT BE USED FOR ANY PURPOSE OTHER THAN PERFORMING SERVICES DIRECTLY OR INDIRECTLY TO FORD, WITHOUT THE EXPRESSED WRITTEN PERMISSION OF FORD. UNAUTHORIZED USE, COPYING OR MODIFICATION, INCLUDING THE REMOVAL OF THIS NOTE, MAY CONSTITUTE A VIOLATION OF CIVIL OR CRIMINAL LAWS ENFORCABLE BY FORD OR GOVERNMENTAL AGENCIES. COPYRIGHT © FORD MOTOR COMPANY (2014)

REFERENCE	D1-U502CDV-GB5T-18D816-C-ARSIJ-001		
PART MUST COMPLY WITH RESTRICTED SUBSTANCE MANAGEMENT STANDARD WSS-M99P9999-A1 TO SAFEGUARD HEALTH, SAFETY AND THE ENVIRONMENT			
DRAFTED IN ACCORDANCE WITH FORD MOTOR COMPANY ENGINEERING CAD AND DRAFTING STANDARDS VERSION 28		3RD ANGLE PROJ DIMENSIONS ARE IN MILLIMETERS	
CAD TYPE	CAD LOC.	CAD FILE	DTMC
K-CATIA5	TCe	F2GT-15K619-C-DWG-01; 3	IS MASTER
OPER. NO.	UNIT	DRAWING	
		GB5T-15K619-CC	
DESIGN	DETAIL	TITLE	SHT 1
TSEMICH1		TRANSCV ASY LK	OF 1
CHECKED	SAFETY	SYS R/CONTR	
DELPHI			
SCALE	DATE	DIVISION	
1:1	20140602	PLANT	

FORD MOTOR COMPANY