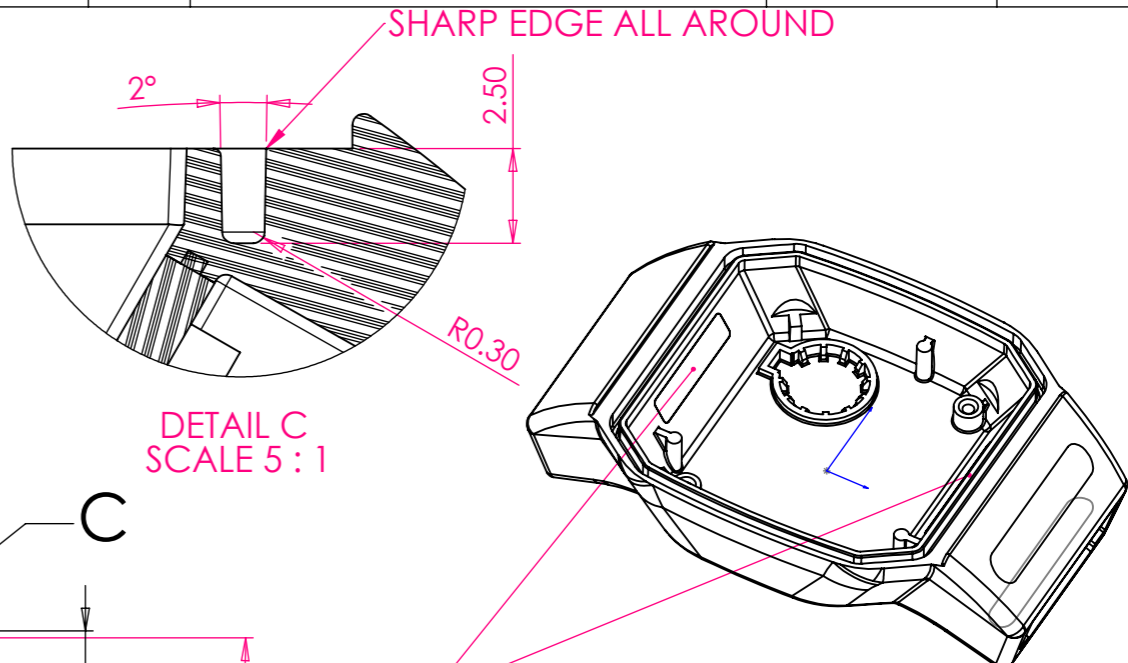
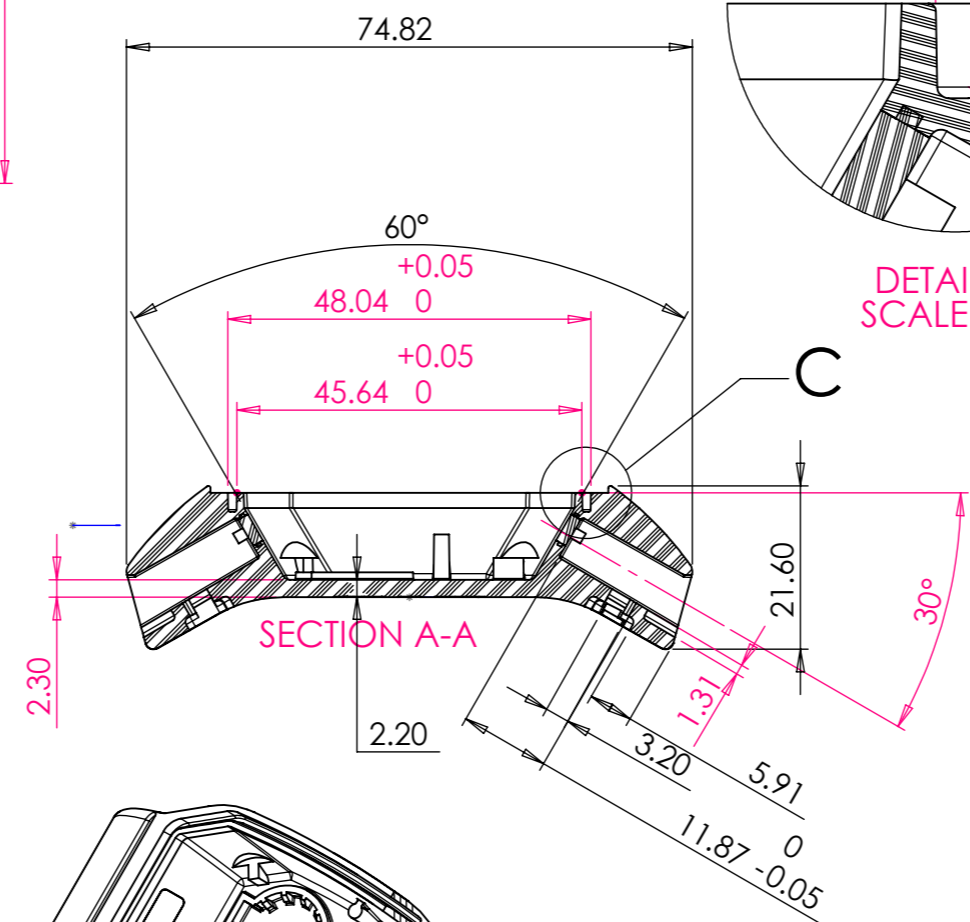
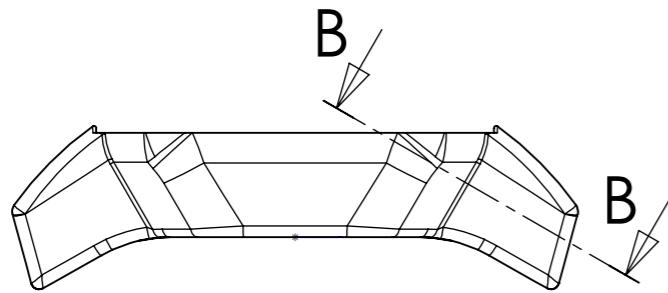
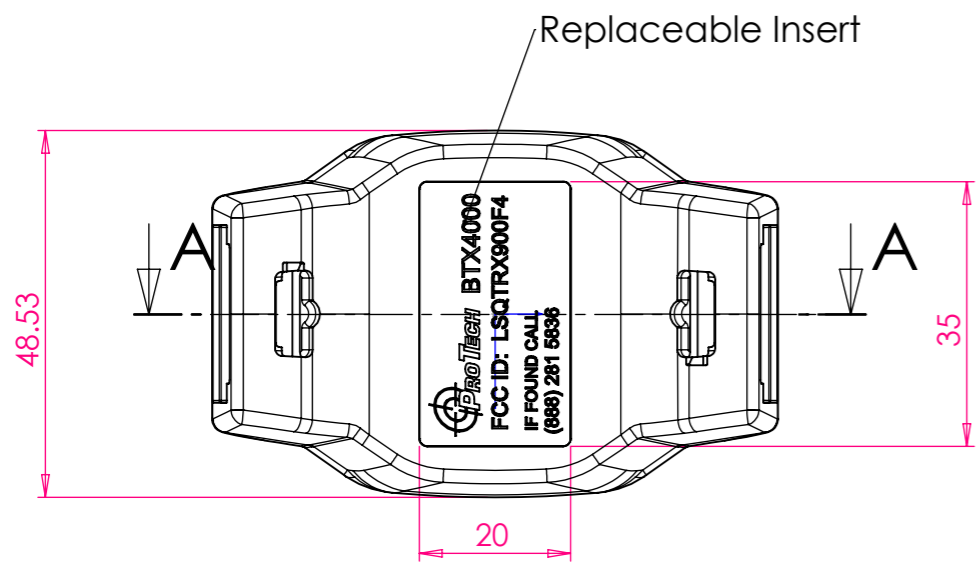
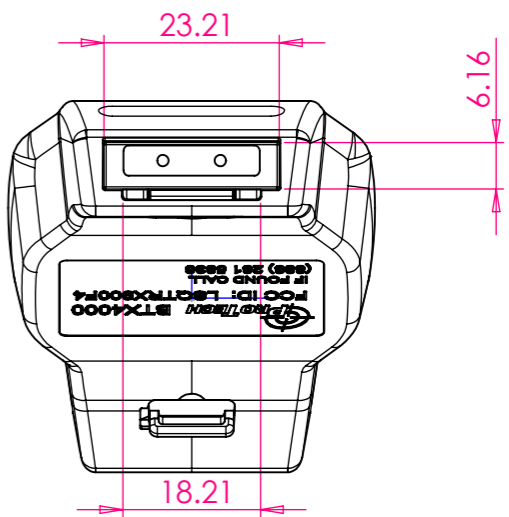
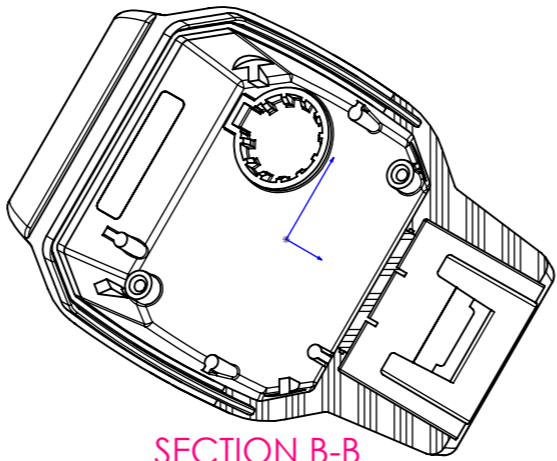
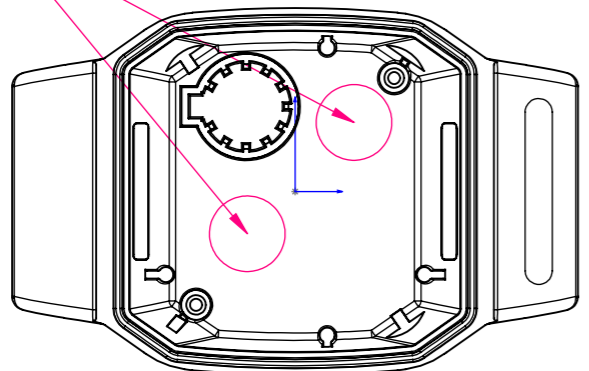


REV.	ECO#	DESCRIPTION	DATE	APPROVED
A00	001134	FIRST RELEASE	29/04/2010	Ron B.
A01	001361	Change the bottom engraving	07/06/2010	RonB



SEE NOTE #10



NOTES:

- MATERIAL:
 - PC - GE Lexan 141R-21092
 - PC - 241R
- COLOR: PMS COOL GREY 10
- GENERAL WALL THICKNESS: 3 mm
- GENERAL DRAFT ANGLES: 1°
- RADII NOT DIMENSIONED: R=0.3 MM.
- SURFACE TEXTURE
 - Internal : Technical polish
 - External : FINE EDM
- MATERIAL GATE AND EJECTOR LOCATIONS : SHOULD BE APPROVED BEFORE MOLD CONSTRUCTION.
- THIS DRAWING IS FOR GENERAL INFO ONLY.
- USE 3D FILE '32000069' FOR MOULD MAKING.
- DATE AND RECYCLE MARK
- MASS : 18.58Gr
- PART IS OVER MOULDED ON PC WINDOW P/N 32000121

U nless otherwise specified
TOLERANCES ARE:
DECIMALS ANGLES
.0±0.1 .00±0.05 ±0.5°
.000±0.01

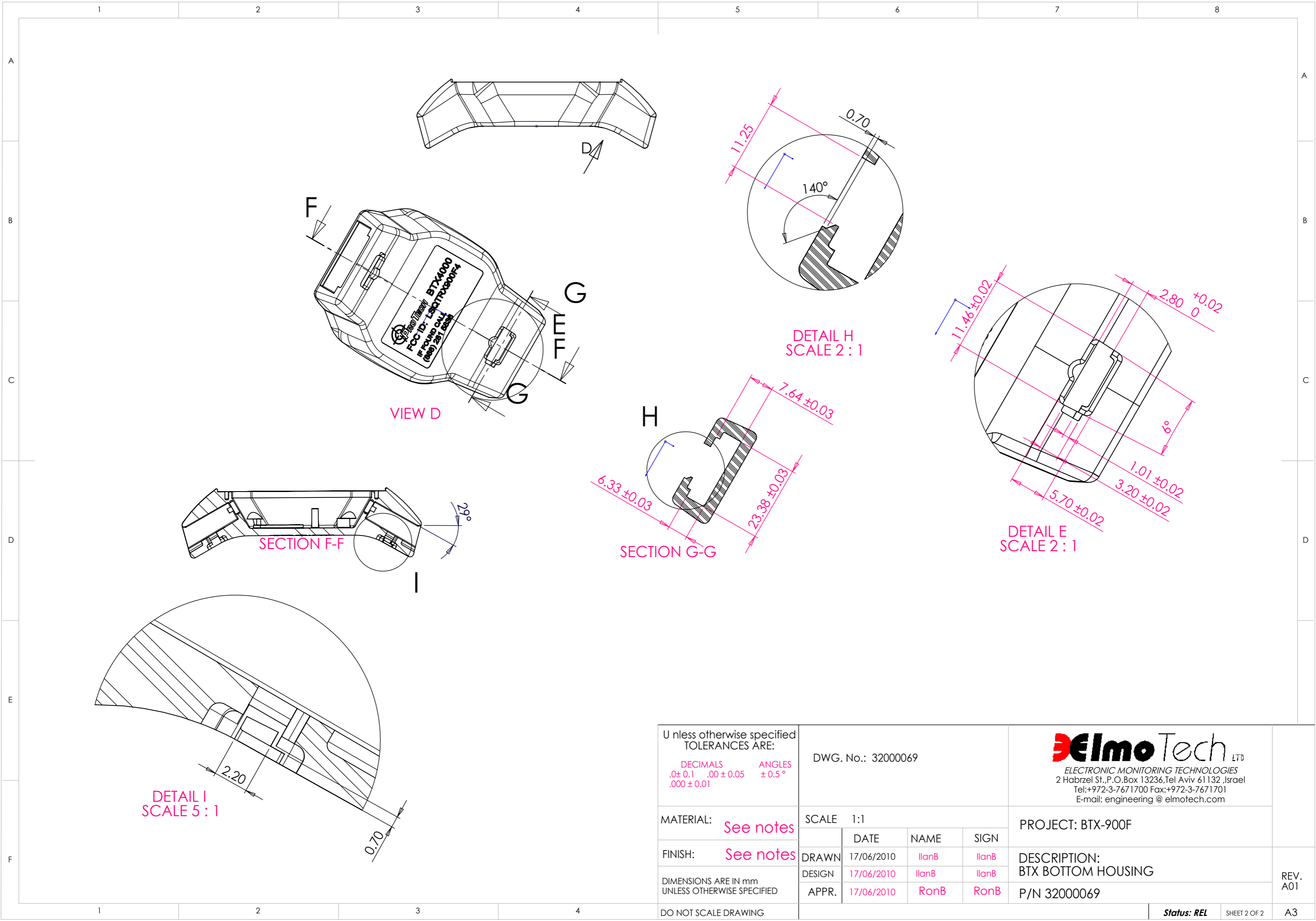
DWG. No.: 32000069
SCALE 1:1

	DATE	NAME	SIGN
DRAWN	17/06/2010	llanB	llanB
DESIGN	17/06/2010	llanB	llanB
APPR.	17/06/2010	RonB	RonB

ElmoTech LTD
ELECTRONIC MONITORING TECHNOLOGIES
2 Habrzel St., P.O.Box 13236, Tel Aviv 61132, Israel
Tel: +972-3-7671700 Fax: +972-3-7671701
E-mail: engineering@elmotech.com

MATERIAL: See notes
FINISH: See notes
DIMENSIONS ARE IN mm UNLESS OTHERWISE SPECIFIED

PROJECT: BTX-900F
DESCRIPTION: BTX BOTTOM HOUSING
P/N 32000069



U unless otherwise specified
TOLERANCES ARE:
DECIMALS ANGLES
.0± 0.1 .00 ± 0.05 ± 0.5°
.000 ± 0.01

DWG. No.: 32000069

SCALE	1:1		
DRAWN	17/06/2010	IlanB	IlanB
DESIGN	17/06/2010	IlanB	IlanB
APPR.	17/06/2010	RonB	RonB

ElmoTech LTD
ELECTRONIC MONITORING TECHNOLOGIES
2 Habrzel St., P.O.Box 13236, Tel Aviv 61132, Israel
Tel: +972-3-7671700 Fax: +972-3-7671701
E-mail: engineering@elmotech.com

MATERIAL: See notes
FINISH: See notes
DIMENSIONS ARE IN mm UNLESS OTHERWISE SPECIFIED
DO NOT SCALE DRAWING

PROJECT: BTX-900F			
DESCRIPTION: BTX BOTTOM HOUSING			
P/N 32000069			

REV. A01
Status: REL SHEET 2 OF 2 A3