

Setup Instructions for Remote Control (146-59-1, 146-65-1, 146-78-1)

6754-T, 08-22, Supersedes, 6754-T, 02-16

This procedure should be performed only by an authorized factory representative.

This document provides information for installation and setup of the XF remote controller. Second generation remotes require a different procedure to set the wireless channel.



Setup for Remote Control

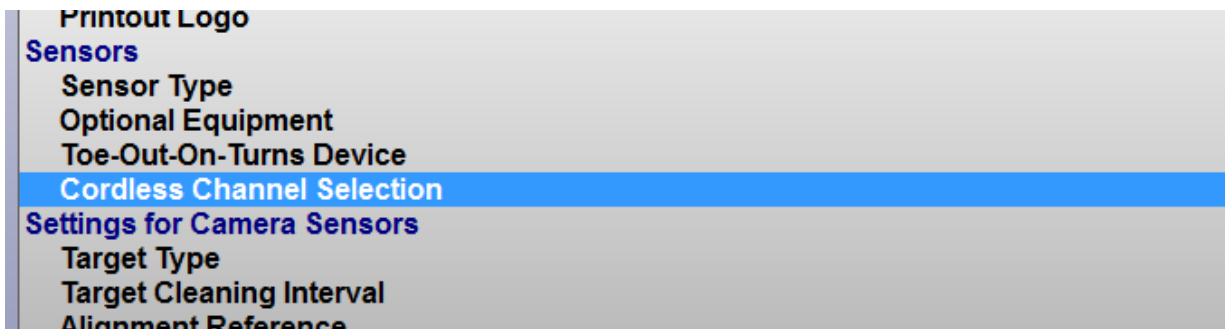
Console Channel Selection



NOTICE

In most cases, the wireless channel should be correctly set from the factory. Use this procedure if there is a wireless channel conflict.

1. From the setup menu, under “Sensors”, select “Cordless Channel Selection”.

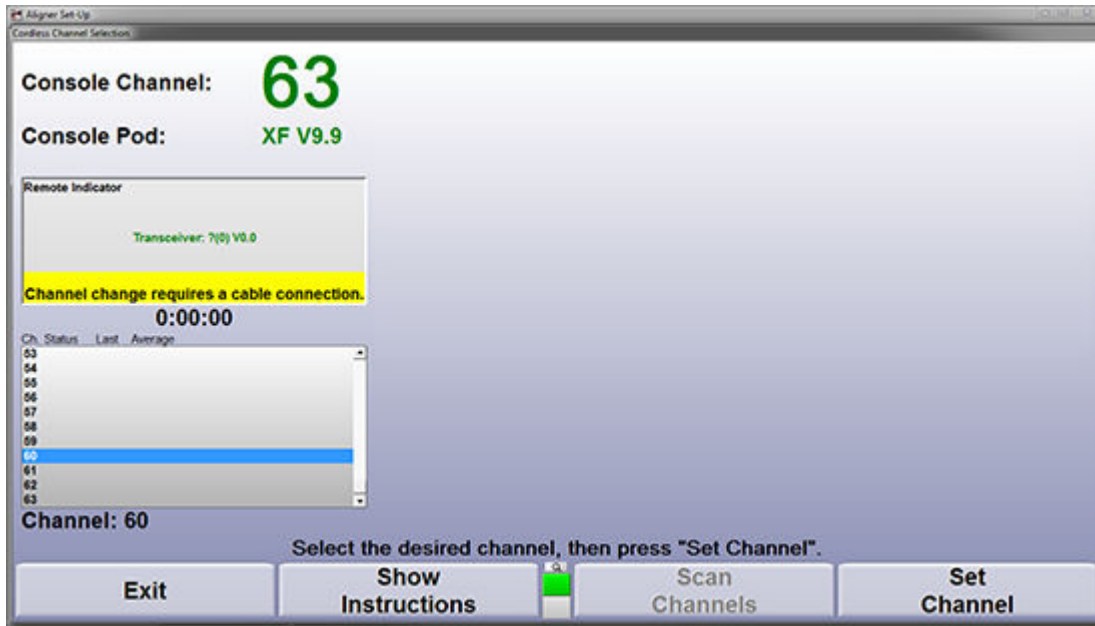


2. The console channel setting is displayed in the upper left corner. Highlight the desired channel from the list below it then select “Set Channel”.



NOTICE

Channels on other devices such as conventional sensors, CodeLink®, remote indicator, etc must also be changed at this time.



Second Design (146-59-1, 146-78-1, 146-65-1)

SETTING UP THE REMOTE CHANNEL

The wireless channel is selected using a set of dip switches on the main board. To set the wireless channel, remove the four screws securing the back cover of the device, then remove the back cover.



NOTICE

Be careful not to lose the black rubber plug over the data port.



Remove the batteries from the device, then remove the three screws securing the main board. Gently turn the board over to access the dip switches on the opposite side.



NOTICE

You can leave the ribbon cable and power wires connected, the dip switches can be accessed without disconnecting them.



Set the dip switches in sequence for the desired channel using the table below.

Switch Setting	Channel	Freq (MHz)	Switch Setting	Channel	Freq (MHz)	Switch Setting	Channel	Freq (MHz)	Switch Setting	Channel	Freq (MHz)
	0	2405		16	2425		32	2445		48	2465
	4	2410		20	2430		36	2450		52	2470
	8	2415		24	2435		40	2455		56	2475
	12	2420		28	2440		44	2460		63	2480

Troubleshooting

If the remote is still not connecting to the WinAlign console after several retries, refer to the steps below to possibly identify a problem.

1. Verify XF pod or receiver board is connected to the PC. There should be a indicator light on the pod showing that they are receiving power from the console.
2. Check to make sure that the remote control channel setting is set to "A,0" in "Remote Control Channel Identification" under the "Aligner Equipment" heading in setup.
3. If the remote is still not connecting, it may be necessary to power down and unplug nearby WinAlign consoles to remove interfering channels.
4. The batteries on the remote indicator may be dead and need to be replaced.

Compliance Statement

FCC

Changes or modifications not expressly approved by the manufacturer could void the user's authority to operate the equipment.

This device complies with part 15 of the FCC Rules. Operation is subject to the following two conditions: (1) This device may not cause harmful interference, and (2) this device must accept any interference received, including interference that may cause undesired operation.



NOTE

This equipment has been tested and found to comply with the limits for a Class B digital device, pursuant to part 15 of the FCC Rules. These limits are designed to provide reasonable protection against harmful interference in a residential installation. This equipment generates, uses and can radiate radio frequency energy and, if not installed and used in accordance with the instructions, may cause harmful interference to radio communications.

However, there is no guarantee that interference will not occur in a particular installation. If this equipment does cause harmful interference to radio or television reception, which can be determined by turning the equipment off and on, the user is encouraged to try to correct the interference by one or more of the following measures:

- Reorient or relocate the receiving antenna.
- Increase the separation between the equipment and receiver.
- Connect the equipment into an outlet on a circuit different from that to which the receiver is connected.
- Consult the dealer or an experienced radio/TV technician for help.

ISED

This device contains license-exempt transmitter(s)/receiver(s) that comply with Innovation, Science and Economic Development Canada's license-exempt RSS(s). Operation is subject to the following two conditions:

1. This device may not cause interference.
2. This device must accept any interference, including interference that may cause undesired operation of the device.

Cet appareil contient des émetteurs / récepteurs exempts de licence qui sont conformes aux RSS exemptes de licence d'Innovation, Sciences et Développement économique Canada. Son fonctionnement est soumis aux deux conditions suivantes:

1. Cet appareil ne doit pas provoquer d'interférences.
2. Cet appareil doit accepter toutes les interférences, y compris les interférences susceptibles d'entraîner un fonctionnement indésirable de l'appareil.

ID (146-59-1)

FCC ID: LS3-146591

IC: 2938A-146591

Model: 146-59-1

ID (146-78-1)

FCC ID: LS3-146781

IC: 2938A-146781

Model: 146-78-1