

C301
C302
C303
C304
C305
C306

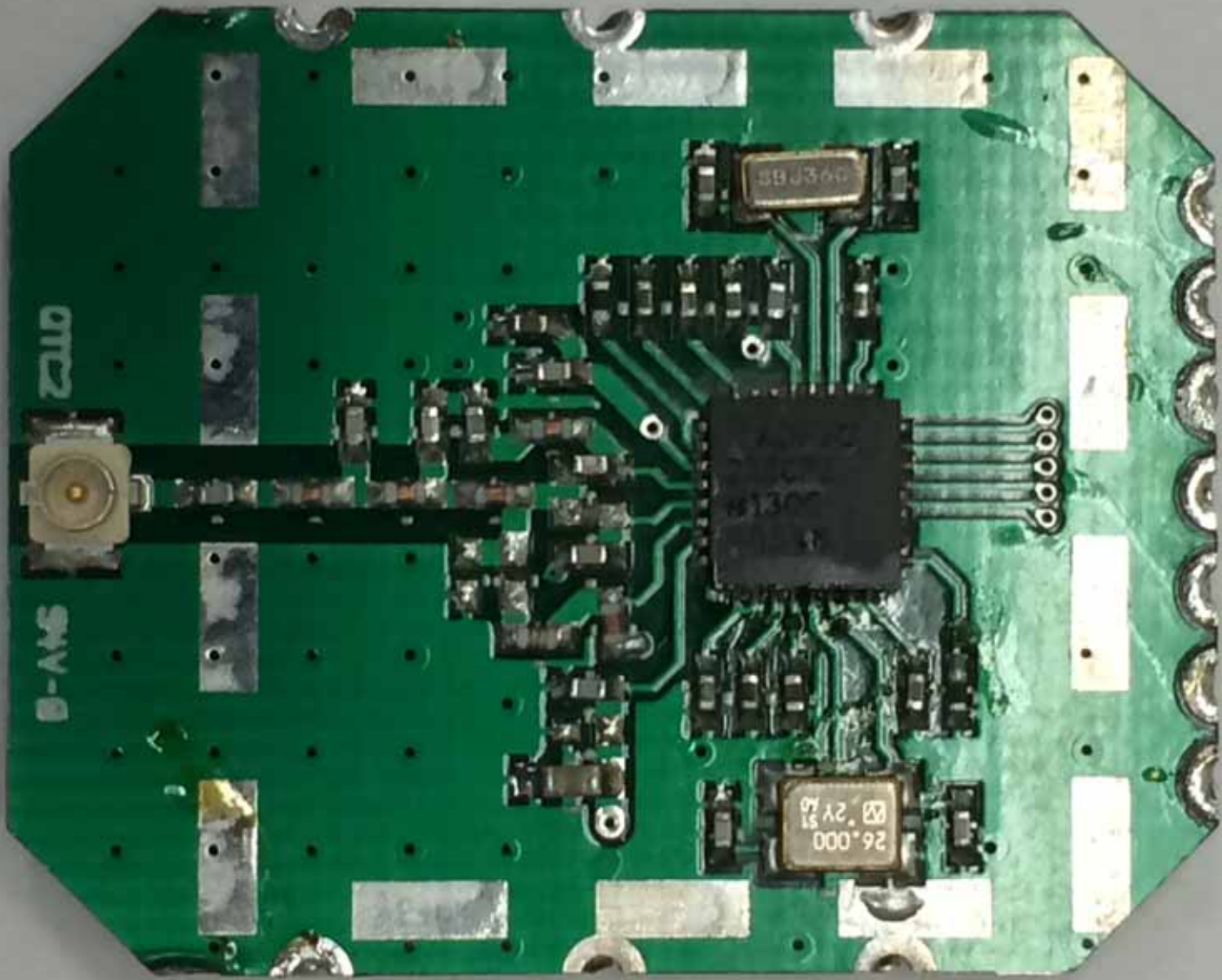
U310
C315
C314
C313
C302
R302
R301
R300
R299
R298
R297
R296
R295
R294
R293
R292
R291
R290
R289
R288
R287
R286
R285
R284
R283
R282
R281
R280
R279
R278
R277
R276
R275
R274
R273
R272
R271
R270
R269
R268
R267
R266
R265
R264
R263
R262
R261
R260
R259
R258
R257
R256
R255
R254
R253
R252
R251
R250
R249
R248
R247
R246
R245
R244
R243
R242
R241
R240
R239
R238
R237
R236
R235
R234
R233
R232
R231
R230
R229
R228
R227
R226
R225
R224
R223
R222
R221
R220
R219
R218
R217
R216
R215
R214
R213
R212
R211
R210
R209
R208
R207
R206
R205
R204
R203
R202
R201
R200
R199
R198
R197
R196
R195
R194
R193
R192
R191
R190
R189
R188
R187
R186
R185
R184
R183
R182
R181
R180
R179
R178
R177
R176
R175
R174
R173
R172
R171
R170
R169
R168
R167
R166
R165
R164
R163
R162
R161
R160
R159
R158
R157
R156
R155
R154
R153
R152
R151
R150
R149
R148
R147
R146
R145
R144
R143
R142
R141
R140
R139
R138
R137
R136
R135
R134
R133
R132
R131
R130
R129
R128
R127
R126
R125
R124
R123
R122
R121
R120
R119
R118
R117
R116
R115
R114
R113
R112
R111
R110
R109
R108
R107
R106
R105
R104
R103
R102
R101
R100
R99
R98
R97
R96
R95
R94
R93
R92
R91
R90
R89
R88
R87
R86
R85
R84
R83
R82
R81
R80
R79
R78
R77
R76
R75
R74
R73
R72
R71
R70
R69
R68
R67
R66
R65
R64
R63
R62
R61
R60
R59
R58
R57
R56
R55
R54
R53
R52
R51
R50
R49
R48
R47
R46
R45
R44
R43
R42
R41
R40
R39
R38
R37
R36
R35
R34
R33
R32
R31
R30
R29
R28
R27
R26
R25
R24
R23
R22
R21
R20
R19
R18
R17
R16
R15
R14
R13
R12
R11
R10
R9
R8
R7
R6
R5
R4
R3
R2
R1

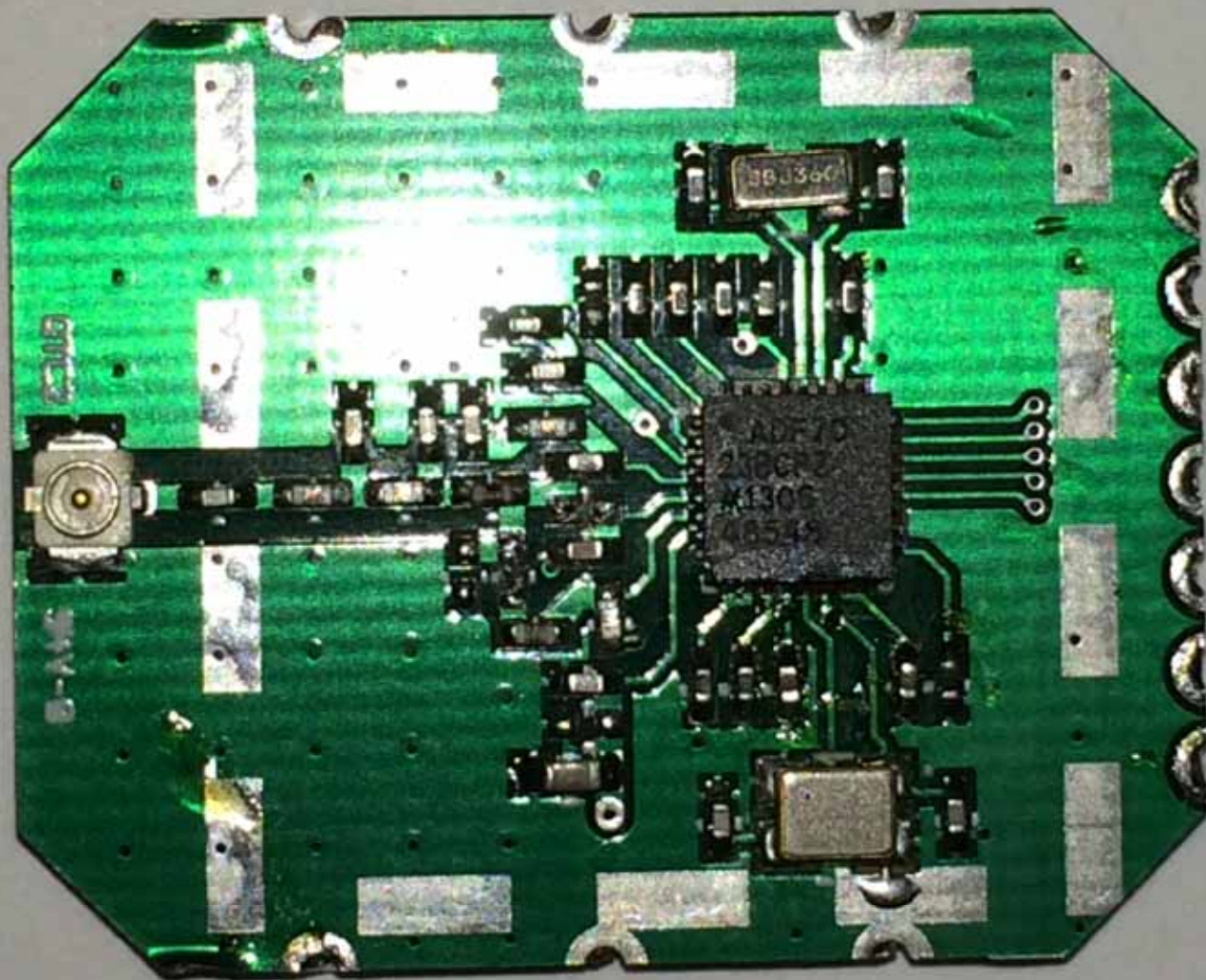
EM6-NO
0512
EM6-NC
0510
0511
0510
0510
0511
0512

000000

RS485
SM2
SM3
RS232

B-W-S
D10











EMG-NO

EMG-NC

C304
C305
C307
C306

C301

C302

C314
C315

U310

R302
R303
R304
R305
R306
R307
R308
R309
R310
R311
R312
R313
R314
R315
R316
R317
R318
R319
R320
R321
R322
R323
R324
R325
R326
R327
R328
R329
R330
R331
R332
R333
R334
R335
R336
R337
R338
R339
R340
R341
R342
R343
R344
R345
R346
R347
R348
R349
R350
R351
R352
R353
R354
R355
R356
R357
R358
R359
R360
R361
R362
R363
R364
R365
R366
R367
R368
R369
R370
R371
R372
R373
R374
R375
R376
R377
R378
R379
R380
R381
R382
R383
R384
R385
R386
R387
R388
R389
R390
R391
R392
R393
R394
R395
R396
R397
R398
R399
R400

U312

SW-V-B

RS232

RS485

SM2
SM3

