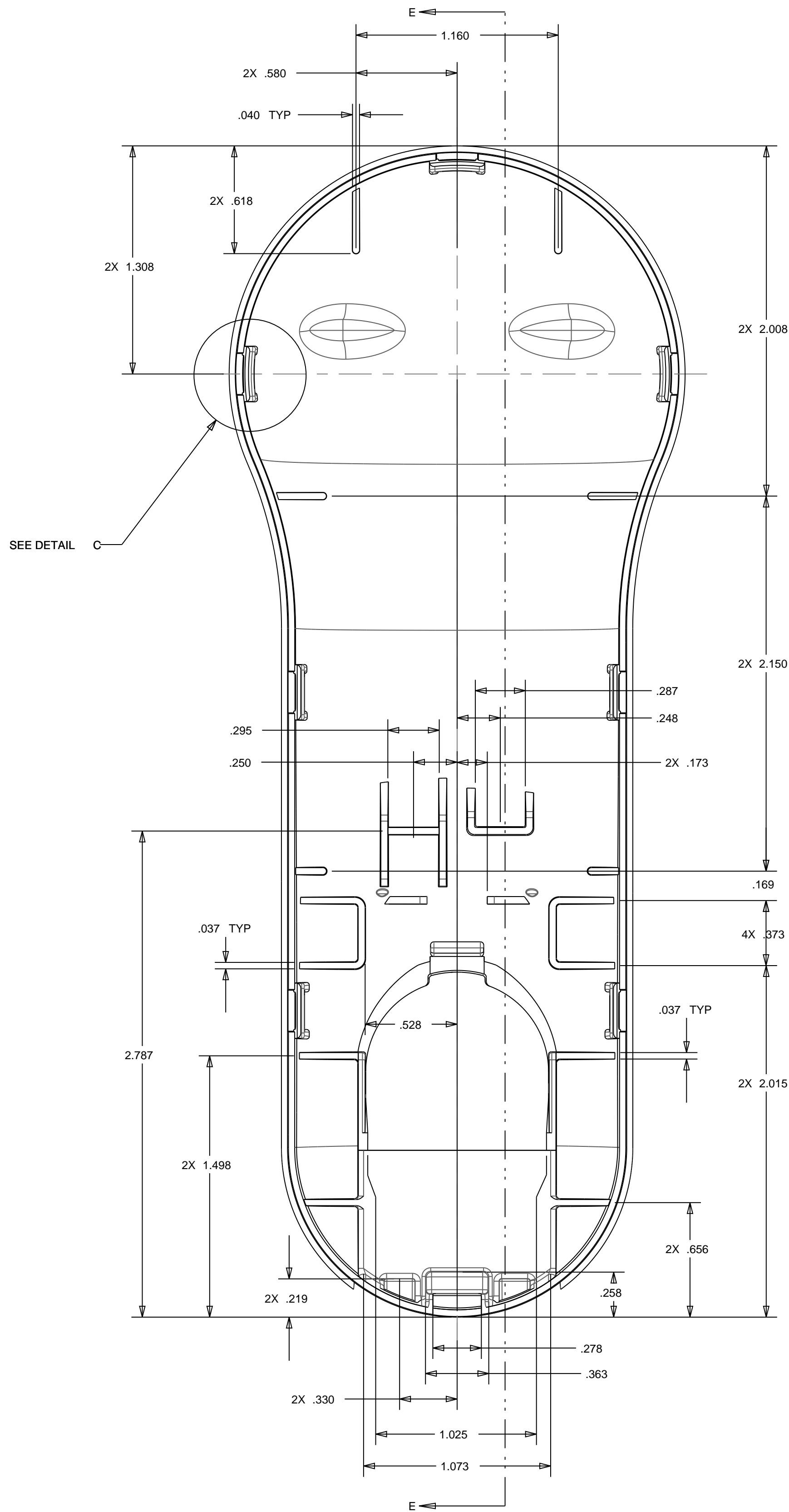
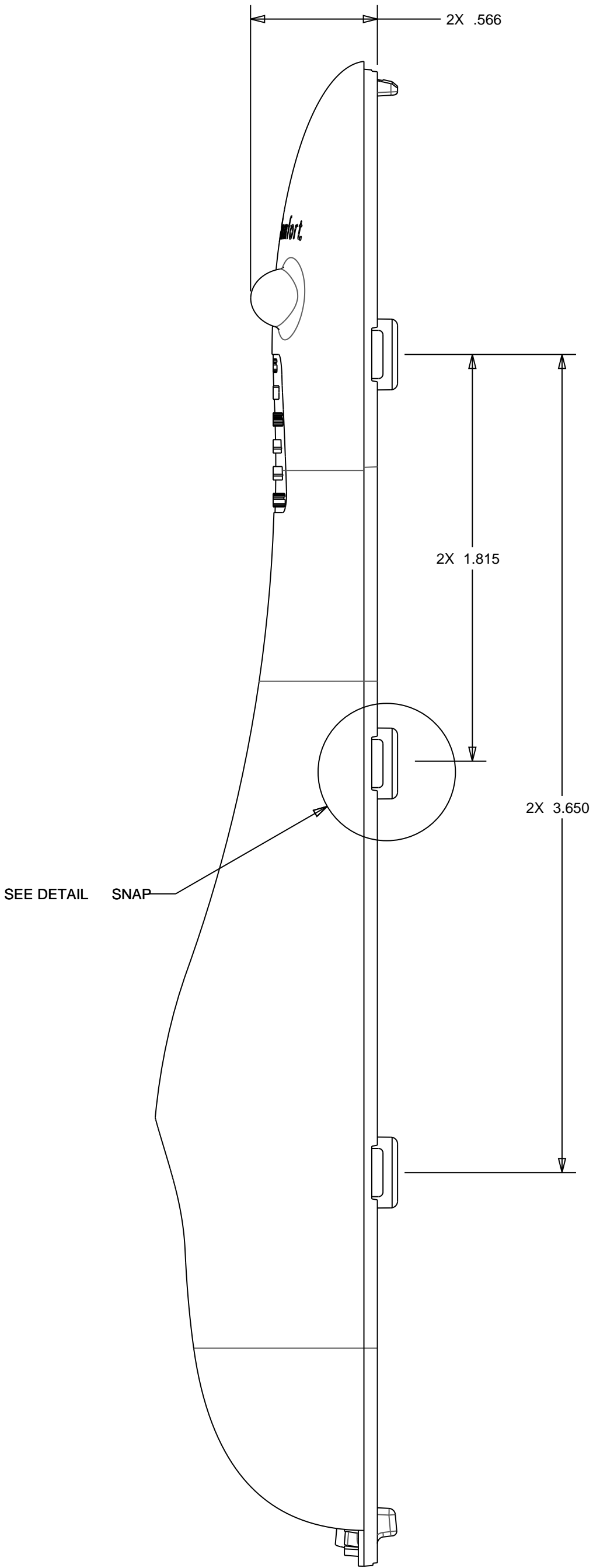
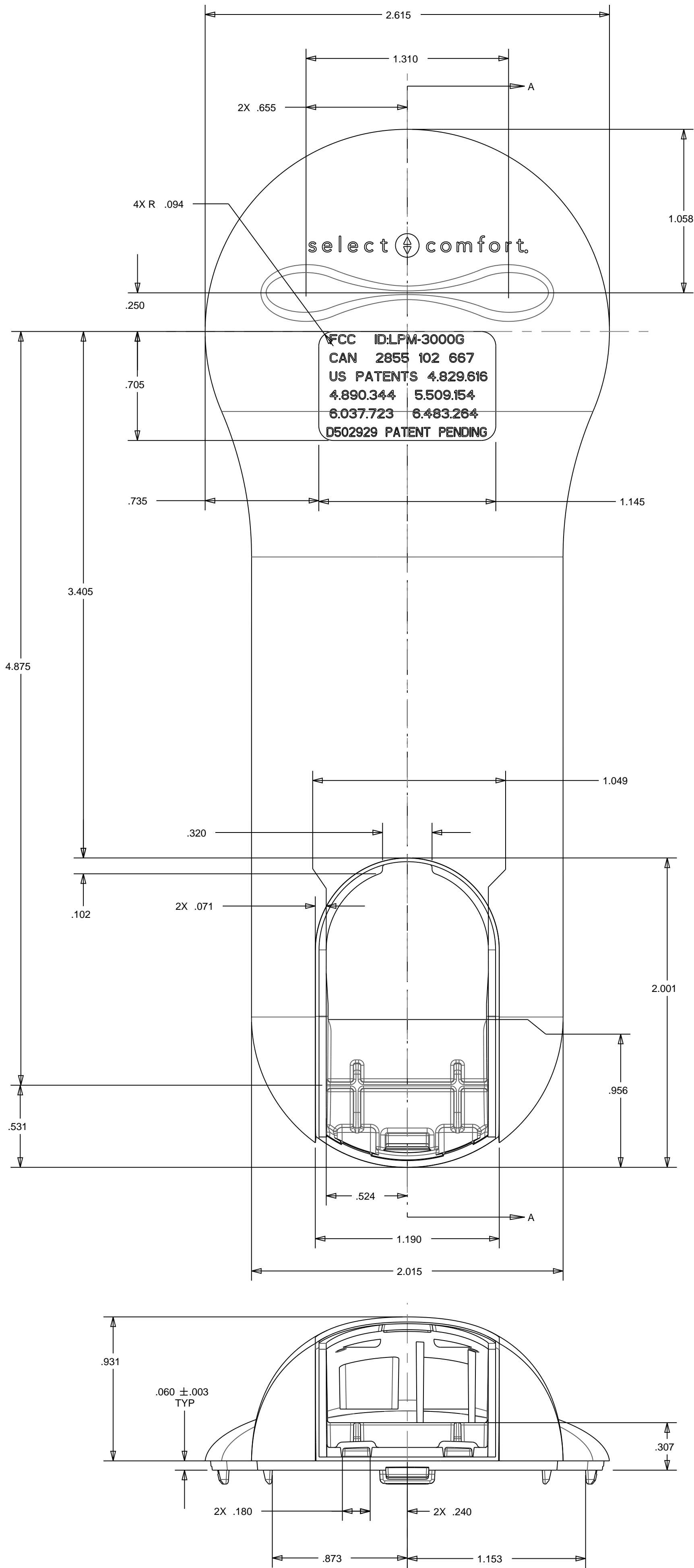


Select Comfort Hand Held Label location



REVISIONS							
REV	CR/CN/RN	DESCRIPTION				APVD	DATE
REL	1228	RELEASE NEW DRAWING				DJK	12-19-03
A	1516					DJK	02-22-06
B	1706	ALTERNATE MATERIAL FOR PLASTIC HAND CONTROL PARTS				NH	05/07/07
C	1825					DJK	10/9/07



- Notes:
- 1.MATERIAL CHOICE: -DOW 9555 ABS
-ASHLAND HIVAL HG6
 - 2.UVI: NONE
 - 3.COLOR SPEC: SB72642617 ABS (LIGHT GRAY)
 - 4.FINISH: DTE IBM SATIN
 - 5.PAD PRINTING: N/A
 - 6.ALL FILLIETS SHOWN SHARP TO BE R0.010"
 - 7.PART TO BE FREE OF: OIL, DIRT, GREASE, SHRINK MARKS, AND MOLDING DEFECTS
 - 8.SURFACE DEFORMATION: GOUGES, MARKS, DENTS ARE UNACCEPTABLE
 - 9.LOCATION OF GATES, EJECTOR PINS LOCATIONS TO BE APPROVED BY
SELECT COMFORT R & D PRIOR TO TOOL BUILD
 - 10.EJECTOR PINS MARKS: 0.020" DEPTH MAX
 - 11.MAX PL FLASH ON FIT EDGE: 0.010"
 - 12.MAX PL FLASH ON NON-FIT EDGE: 0.030
 - 13.MAX GATE PROTRUSION ALLOWED: 0.010"
 - 14.MEASURING CONDITIONS: 72.0
 - 15.THIS DRAWING IS INTENDED AS A GENERAL INSPECTION DRAWING ONLY.
THE FINAL DESIGN IS BASED ON A 3D CAD DATABASE.
 - 16.⊙ DENOTES INSPECTION D

THIS DOCUMENT IS CONFIDENTIAL AND PROPRIETARY PROPERTY OF SELECT COMFORT CORPORATION. DUPLICATION OF ANY PART OR IN ITS ENTIRETY CAN NOT BE MADE WITHOUT THE EXPRESS WRITTEN AUTHORIZATION OF SELECT COMFORT CORPORATION.					
DRAFTED IN ACCORDANCE WITH SELECT COMFORT R & D STANDARDS AT INITIAL RELEASE					
THIRD ANGLE PROJECTION DO NOT SCALE - WORK TO DIMS					
SPEC NO:					
MDL: ***	REPLACES:				
DWN: FLC	DATE: 03-30-04	SCALE: 2.000	SIZE	PART NO	REV
CHKD: DJK	DATE: 03-30-04	WEIGHT: 24 GRAMS	A1	106730	C
APVD: DJK	DATE: 03-30-04	SHEET: 1 OF 2			

