

RADIATED SETUP



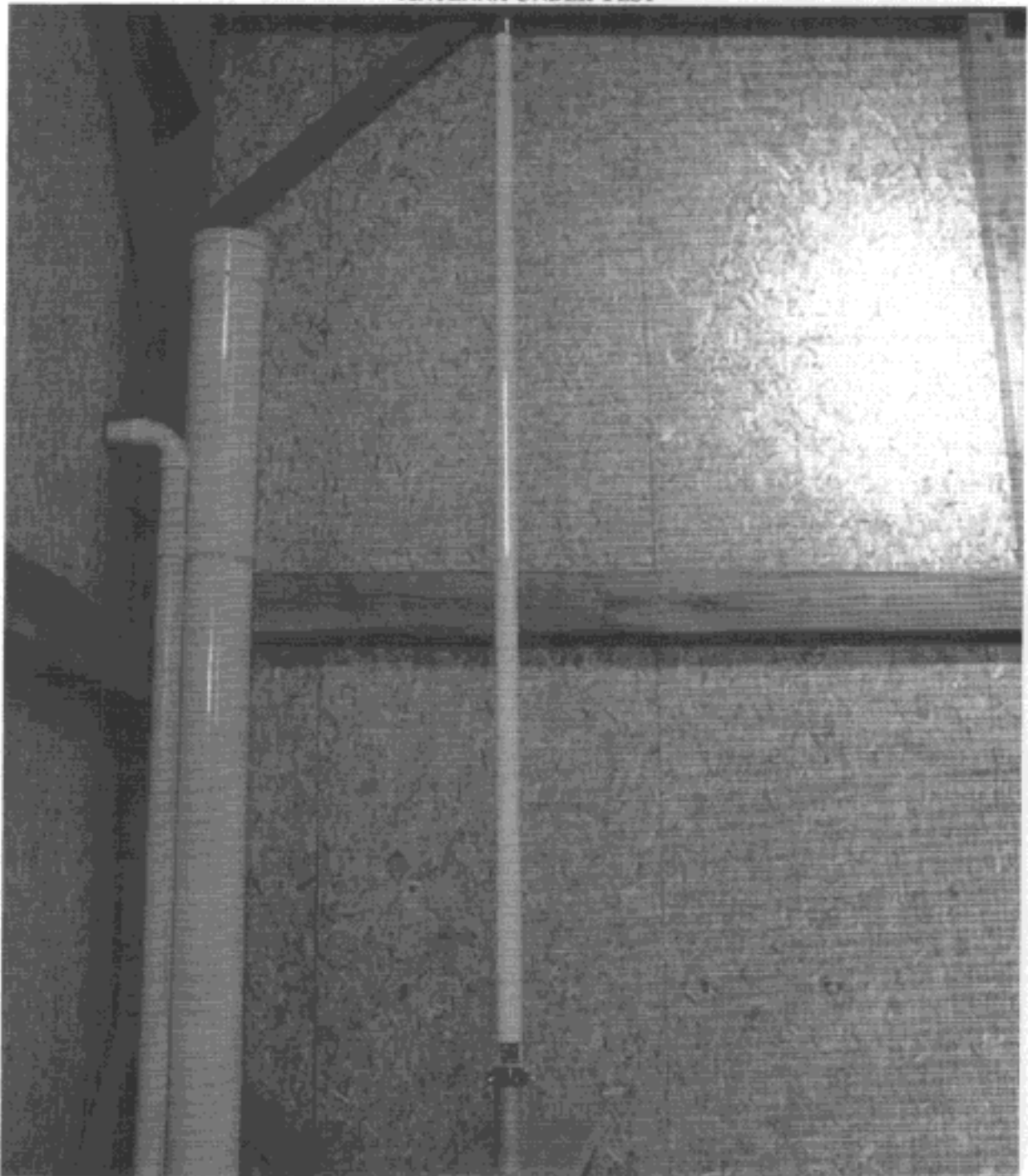
EXHIBIT 5: 12dBi OMNI ANTENNA MEASUREMENTS:

Description of Antenna

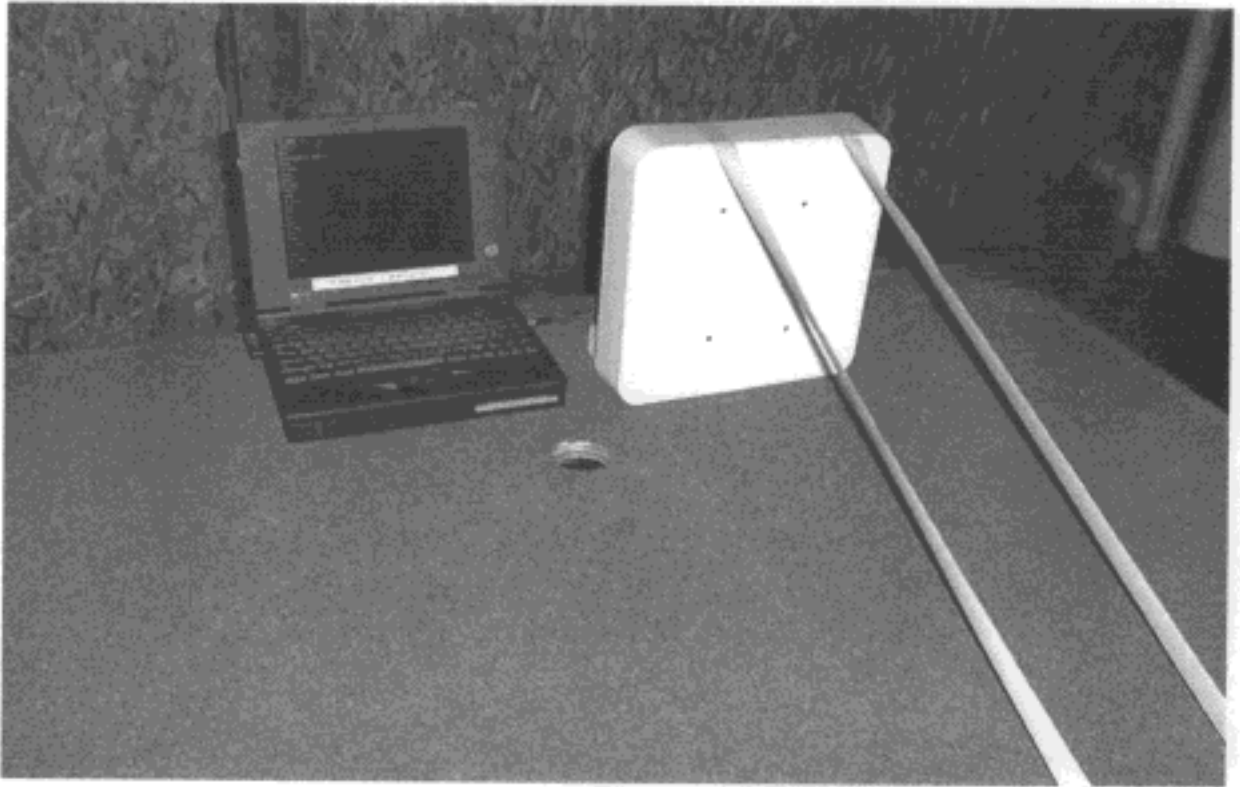
This antenna is a 12dBi omni-directional mast mounted vertical antenna

EUT Picture:

ANTENNA UNDER TEST



**RADIATED SETUP
FRONT VIEW**

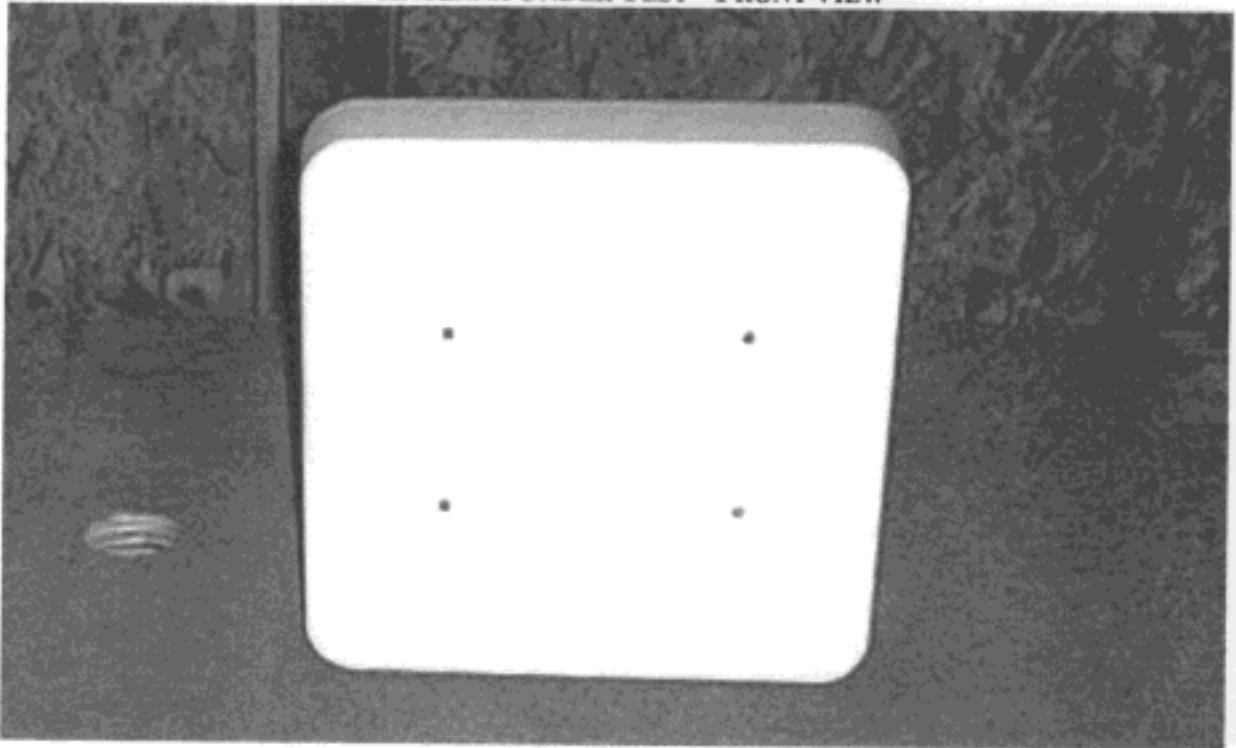


REAR VIEW

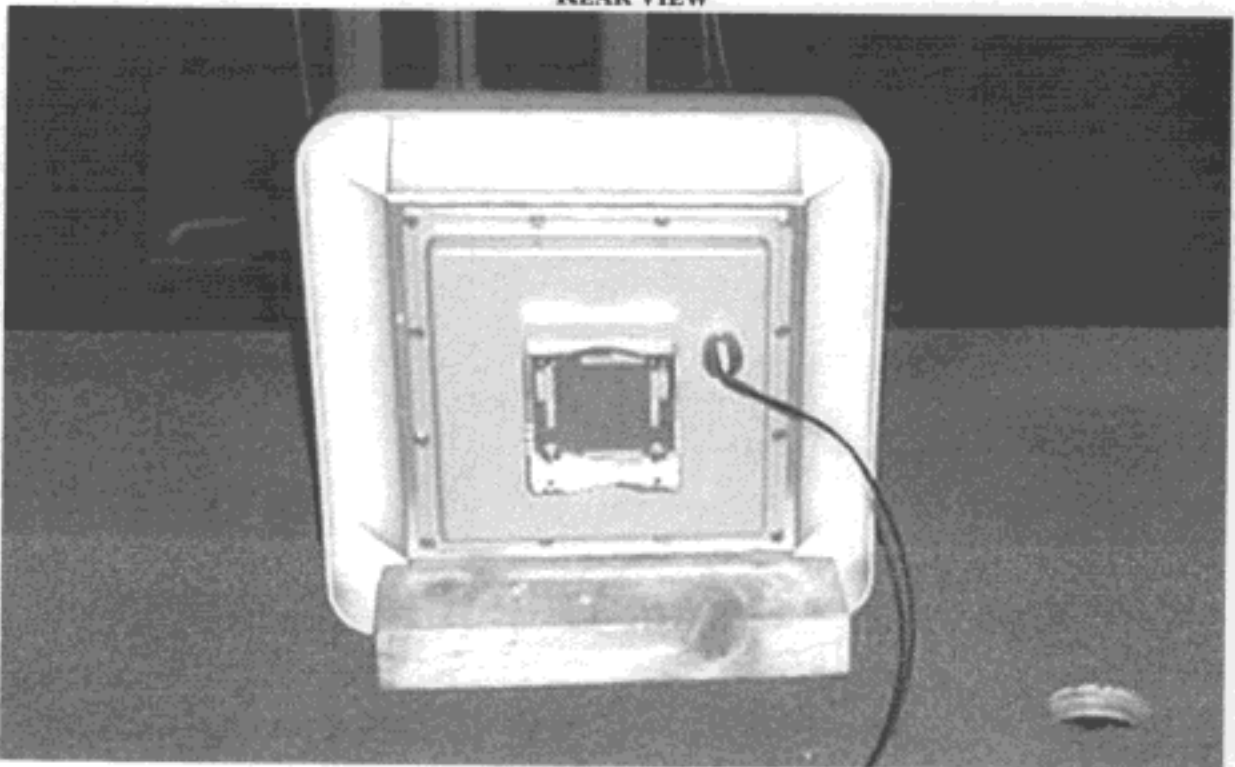


EUT Picture:

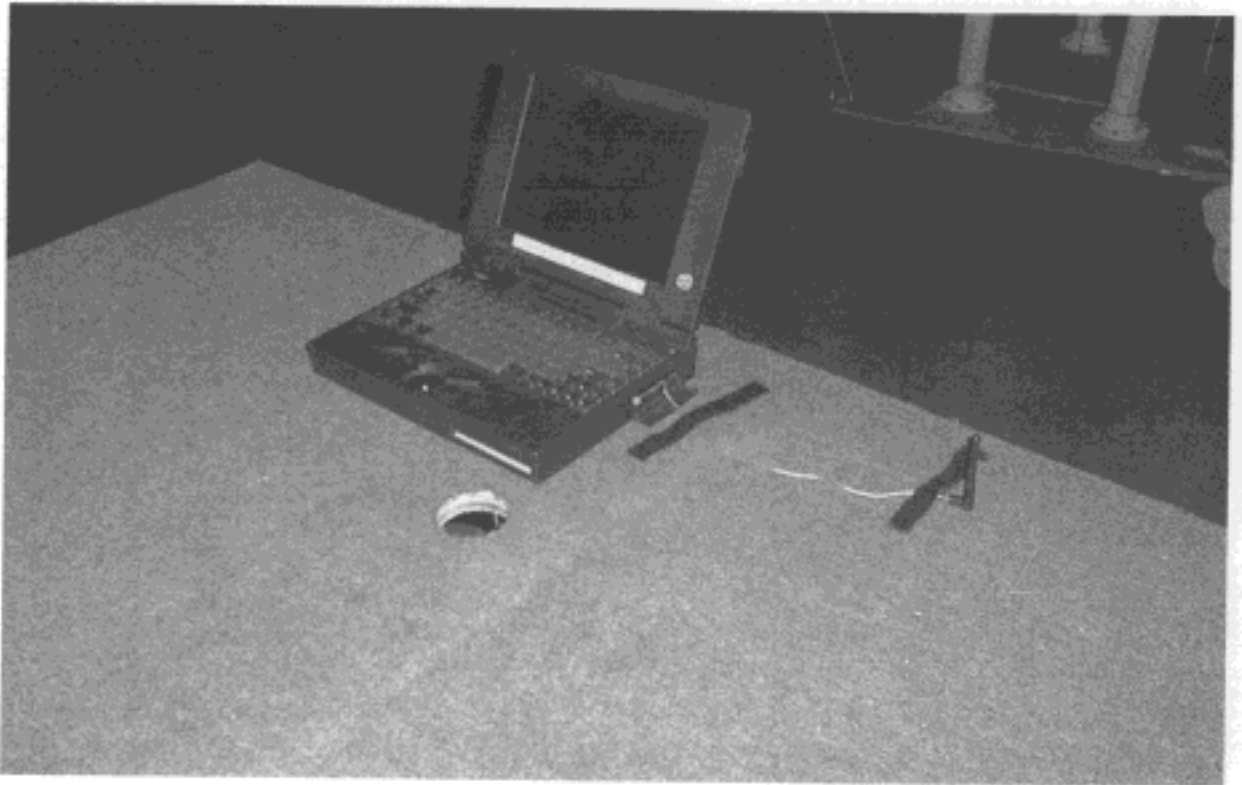
ANTENNA UNDER TEST - FRONT VIEW



REAR VIEW



**RADIATED SETUP - 2.2dBi ANTENNA TESTS
FRONT VIEW**



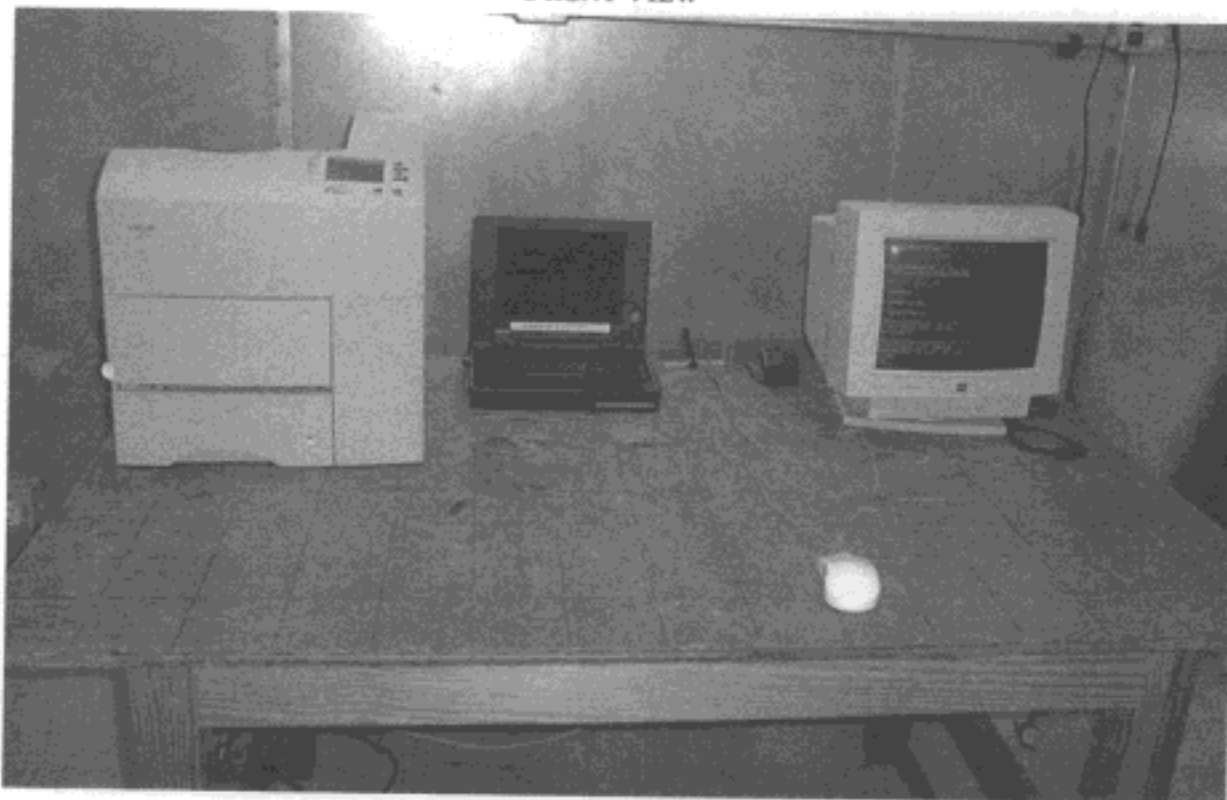
VI

REAR VIEW

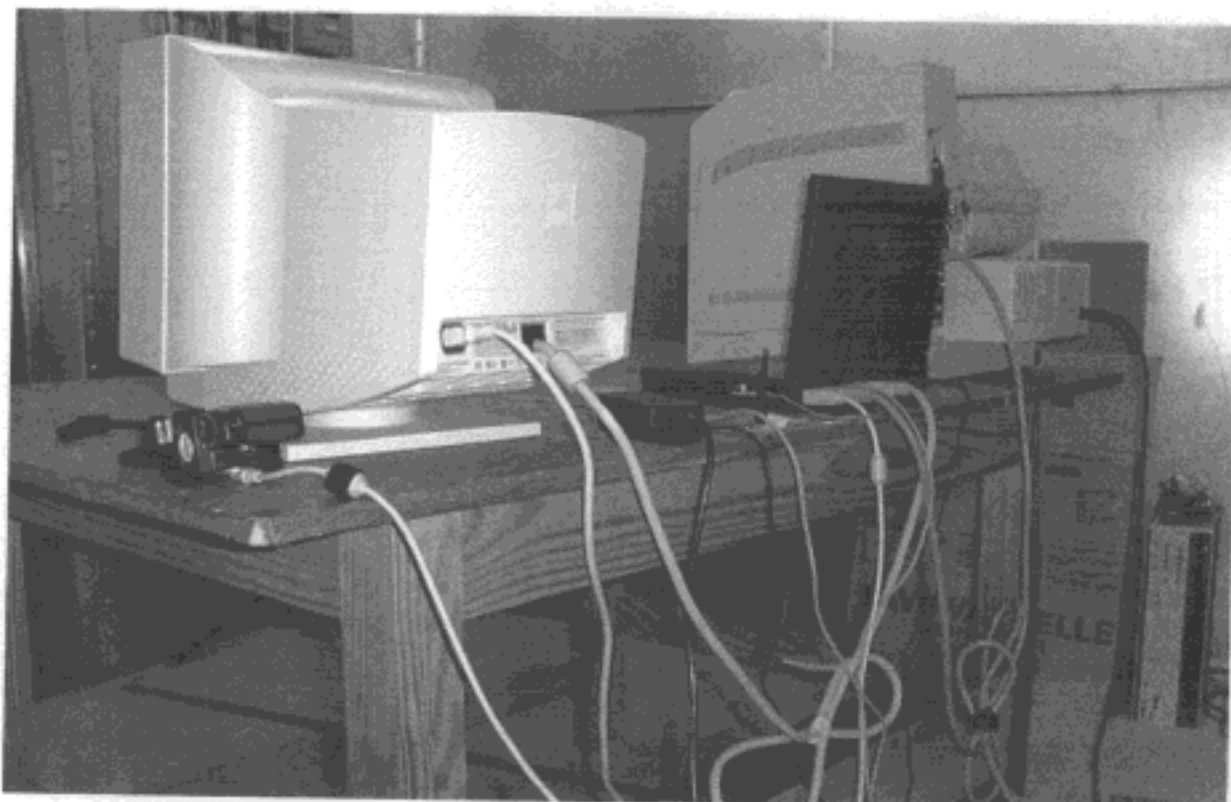


LINE CONDUCTED SETUP

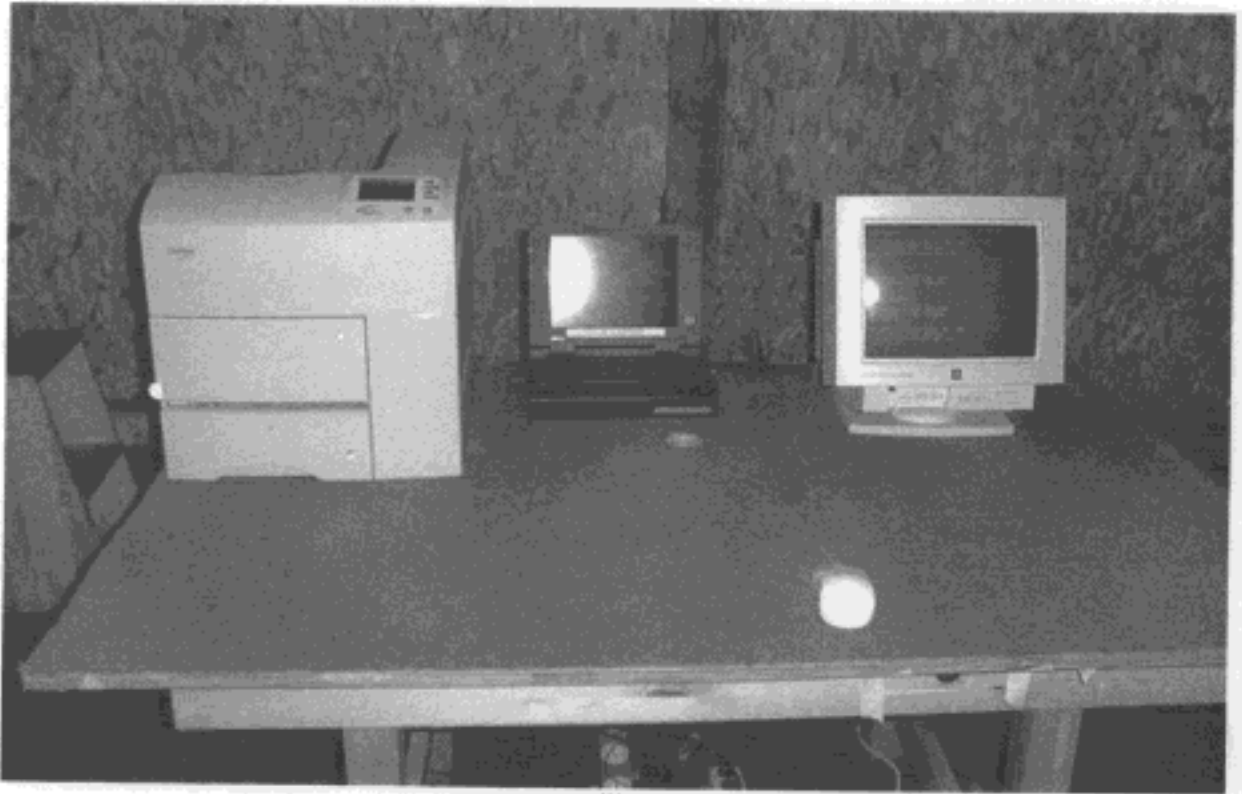
FRONT VIEW



REAR VIEW



**RADIATED SETUP
FRONT VIEW**



REAR VIEW

