

Figure 1. A photograph of the interior of a metal equipment rack containing several electronic circuit boards. The boards are densely packed with components and have various labels attached. A small white label is visible on the right side of the rack. The rack is mounted on a surface, and the interior of the door is visible at the bottom.

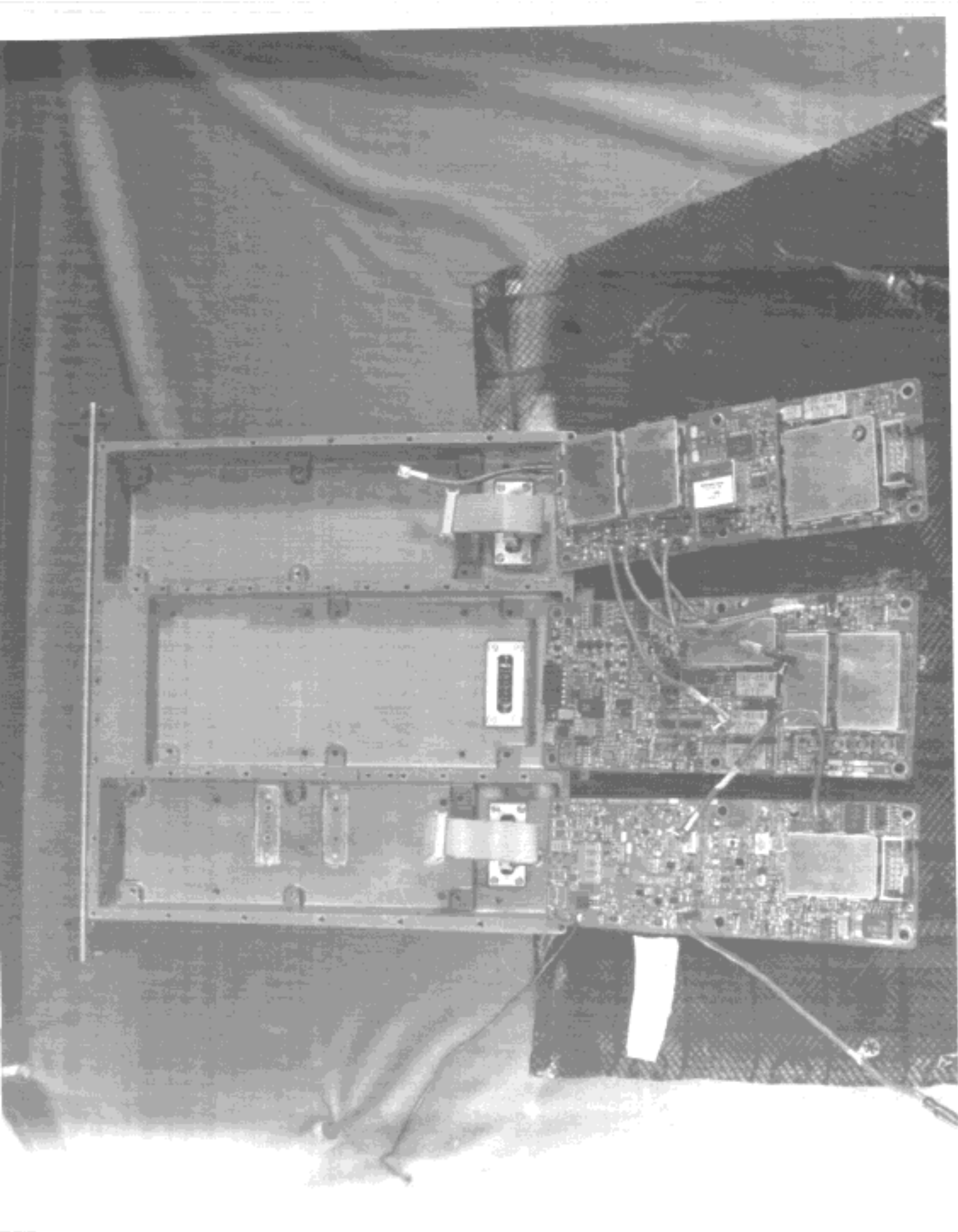
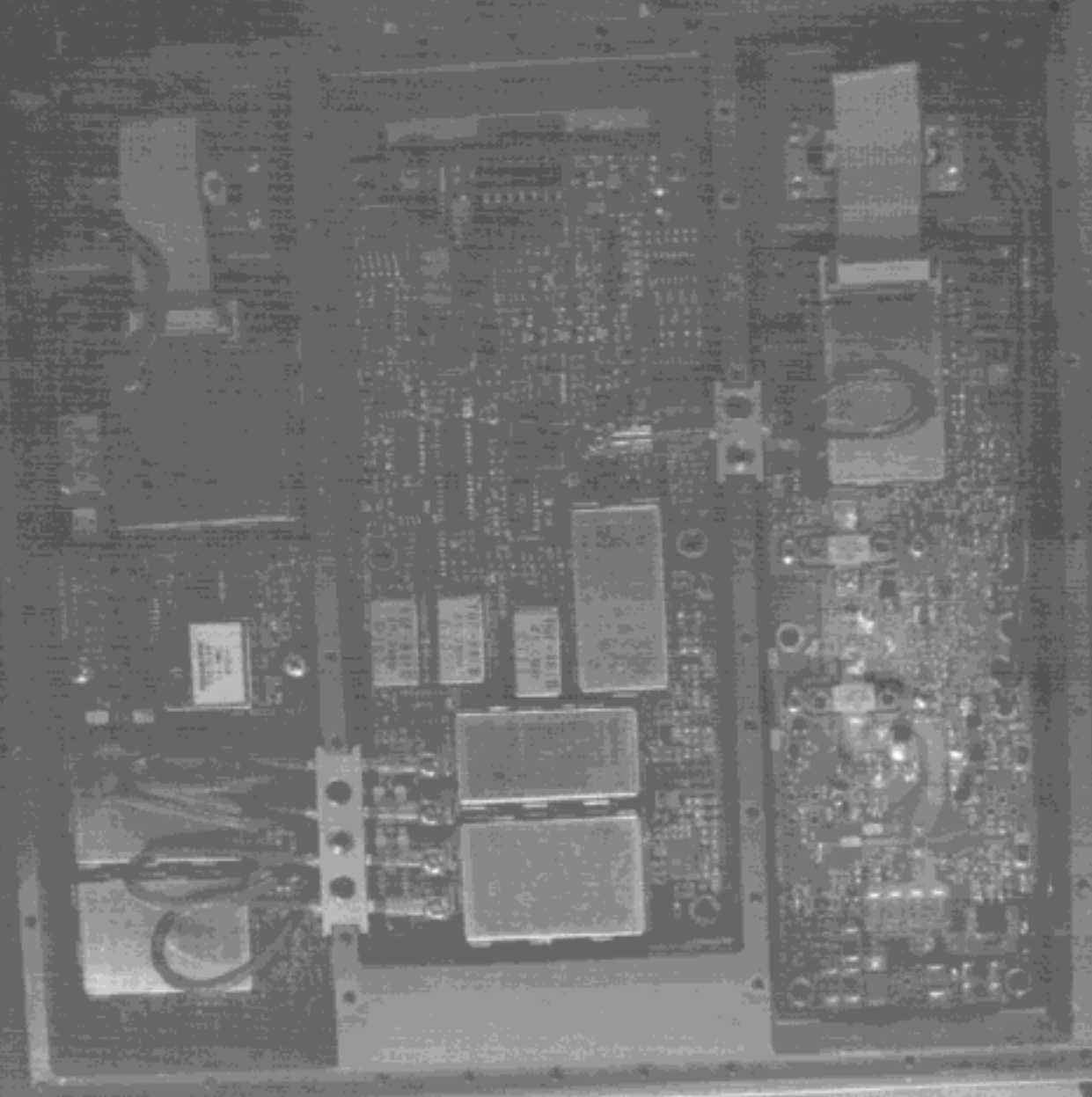
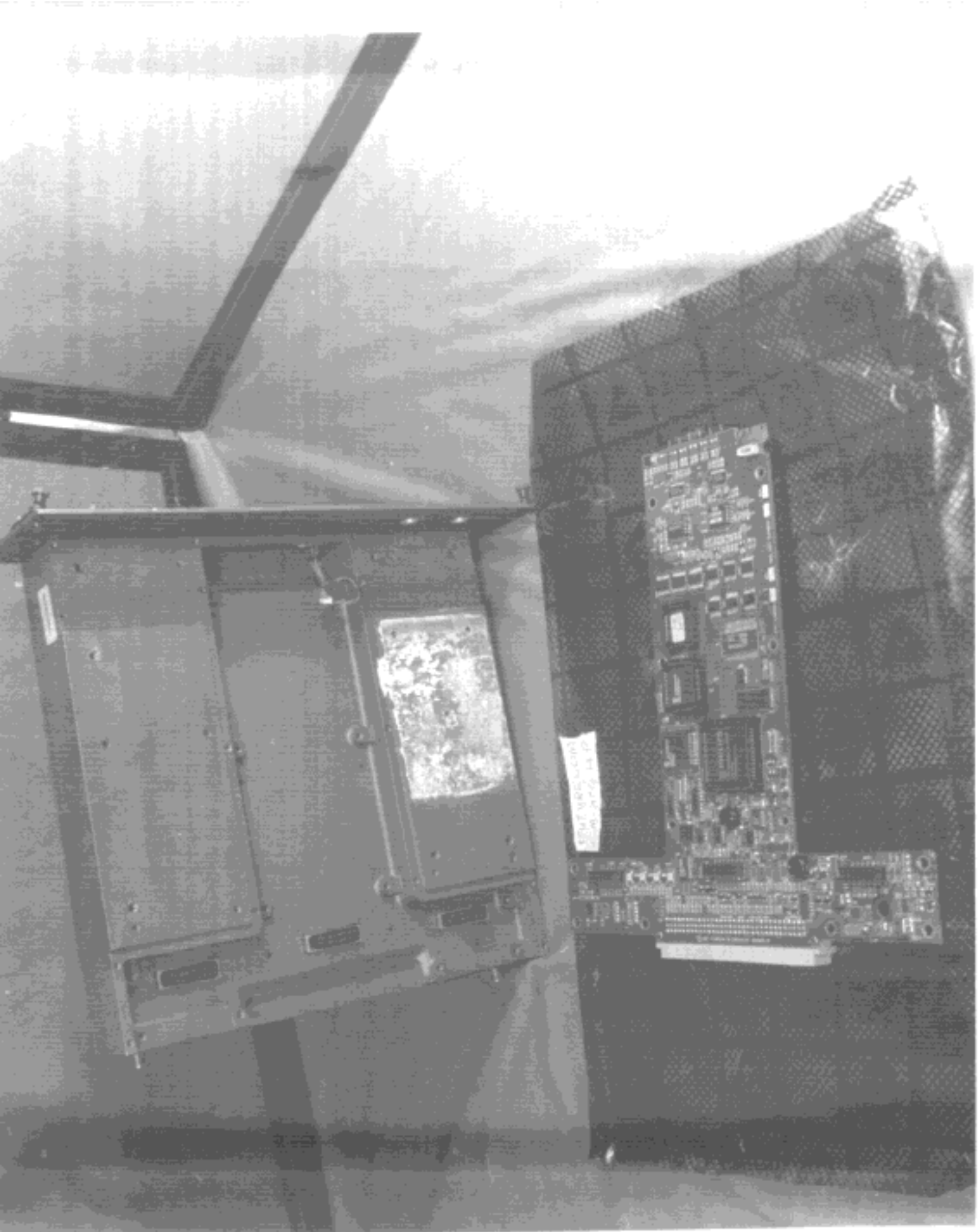


Fig. 1. Disassembled mobile phone showing internal components: chassis, PCBs, and connectors.

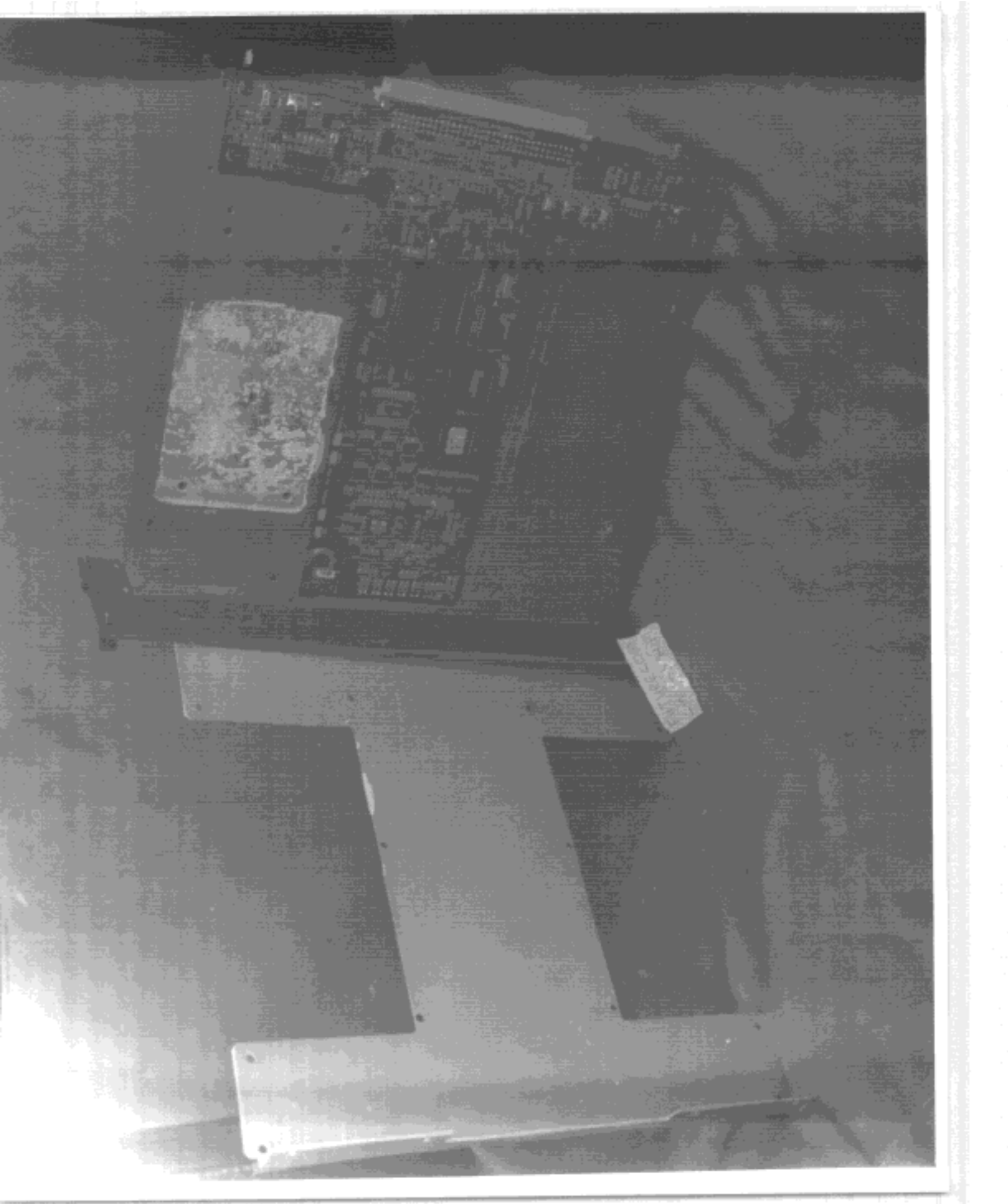
FUTURE WORK
C.M. [unclear]



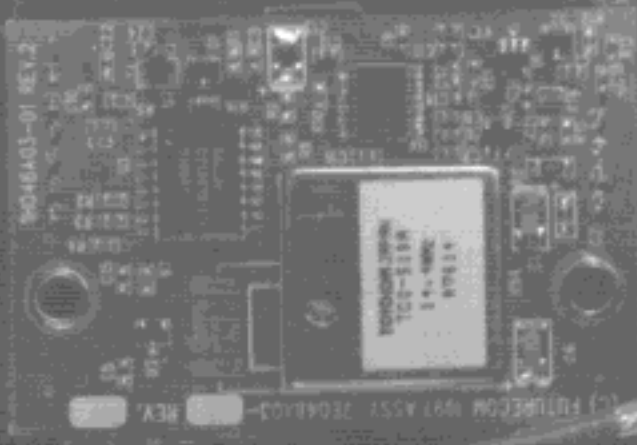
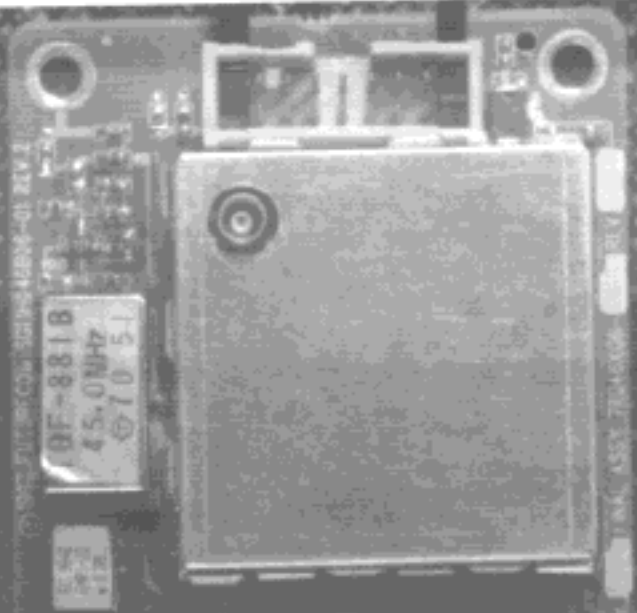
R A



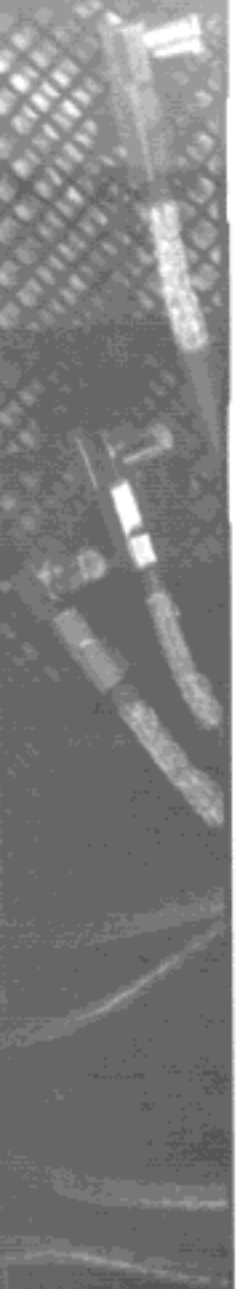
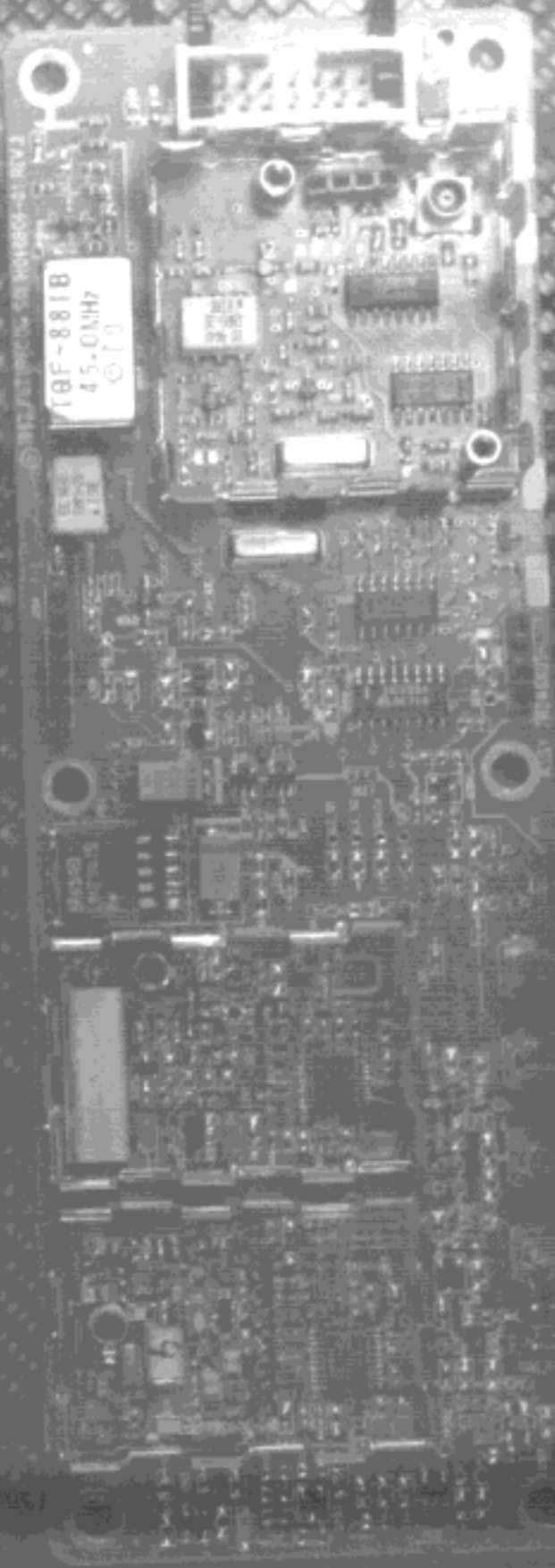
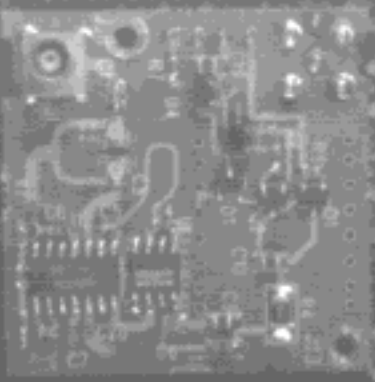
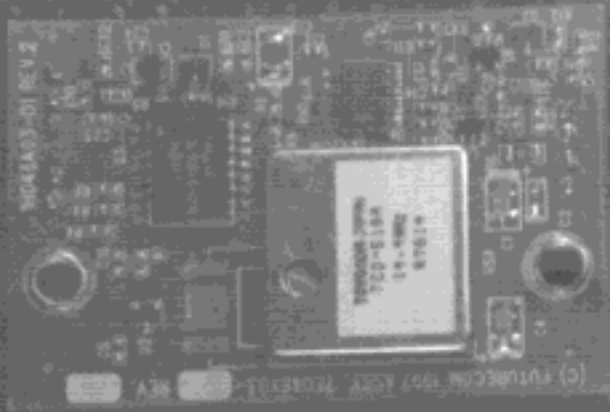
THE WIDE WORLD OF COMPUTERS

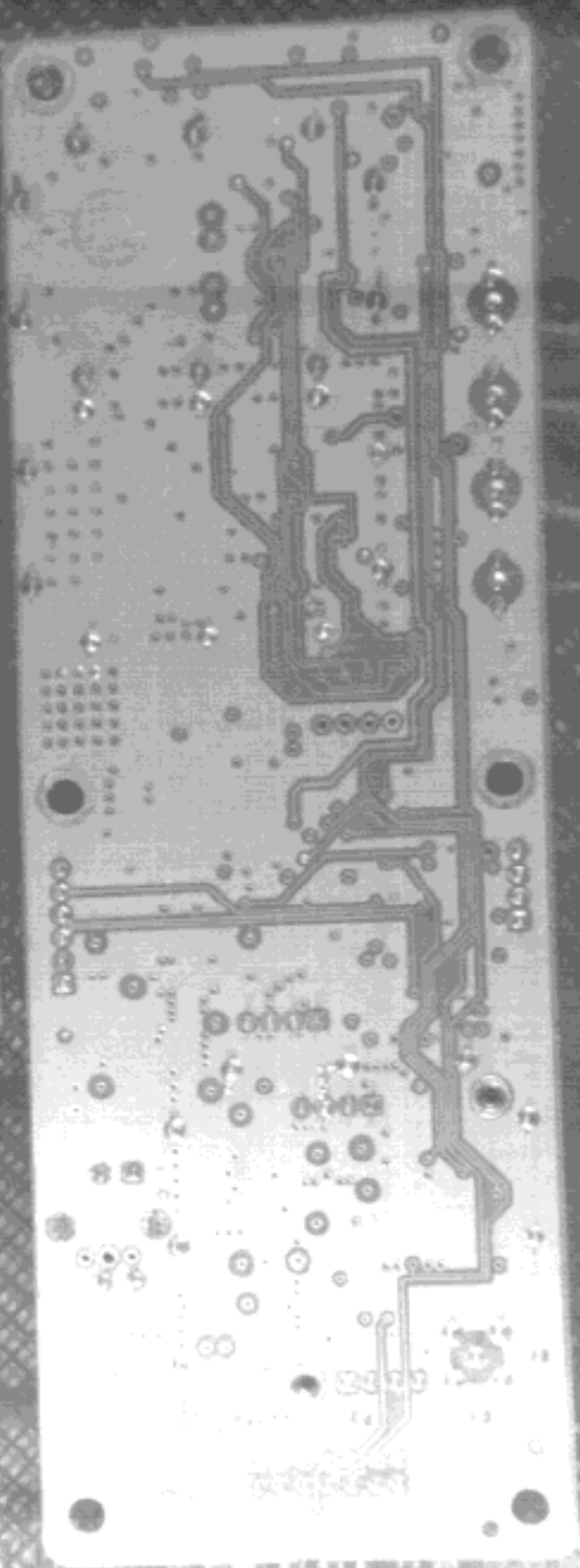
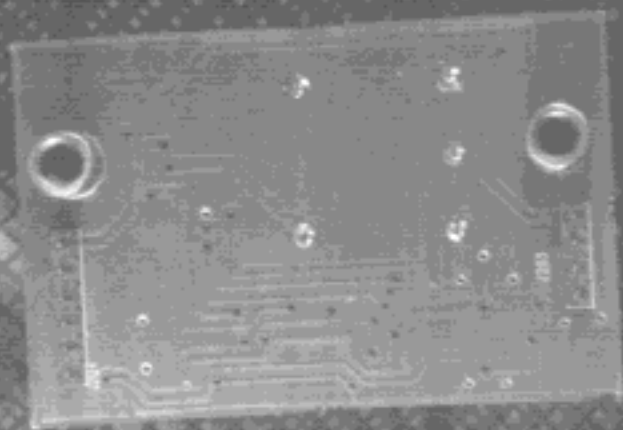
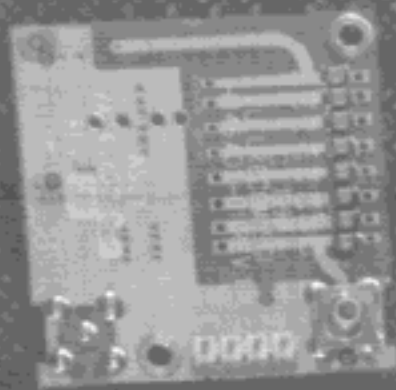


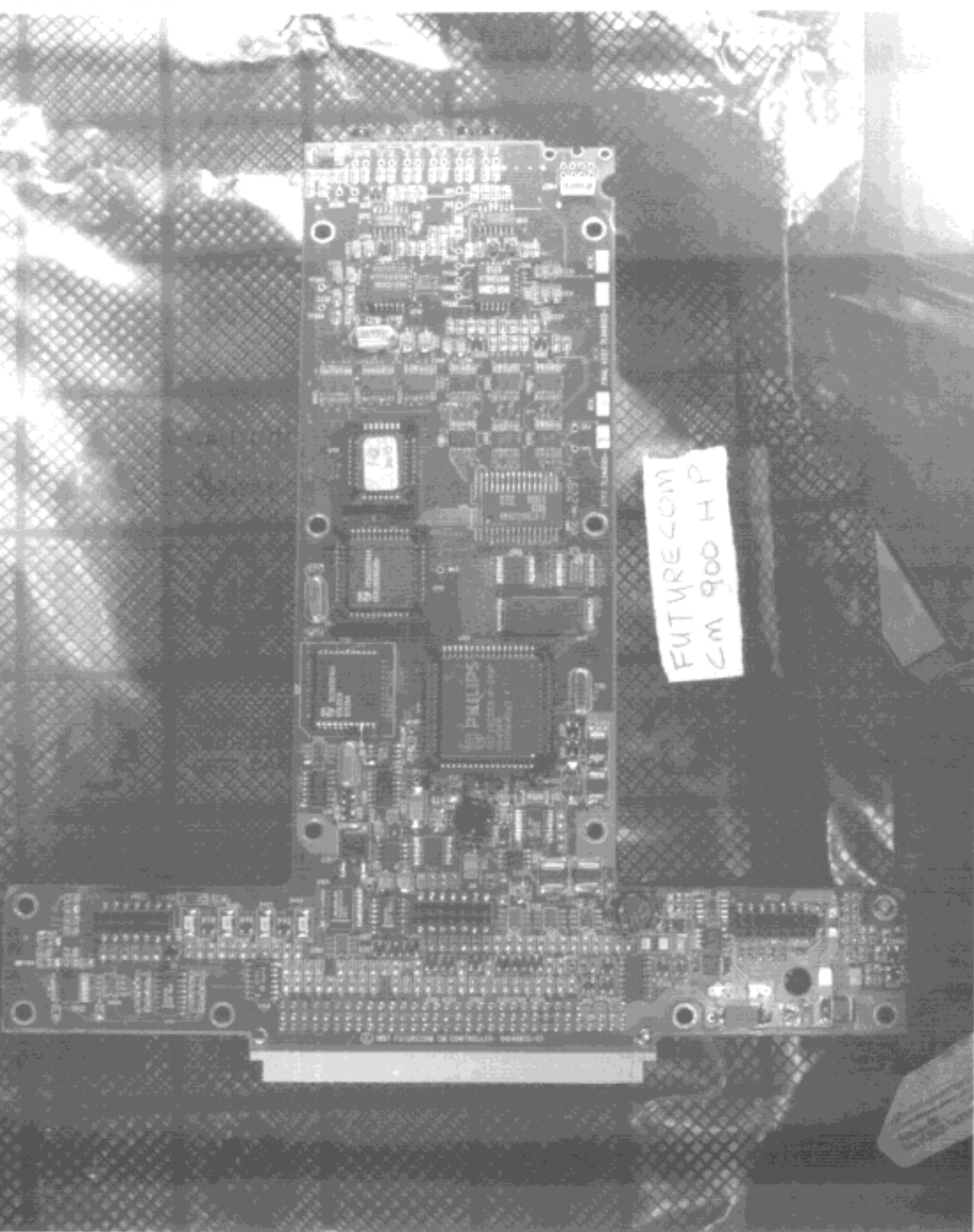
FUTURECOM
CM 900 HP



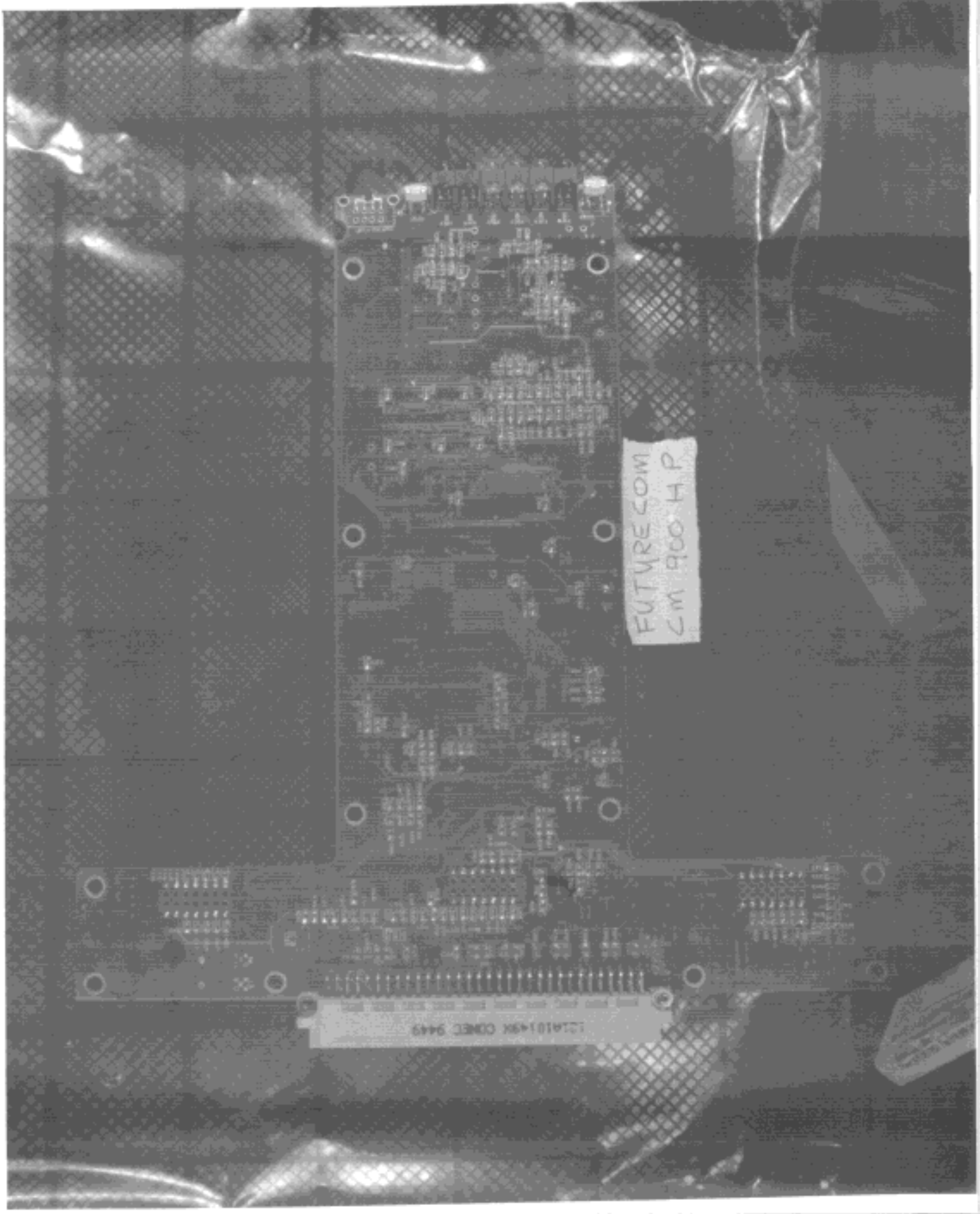
FUTURECOM
CM 900 HP







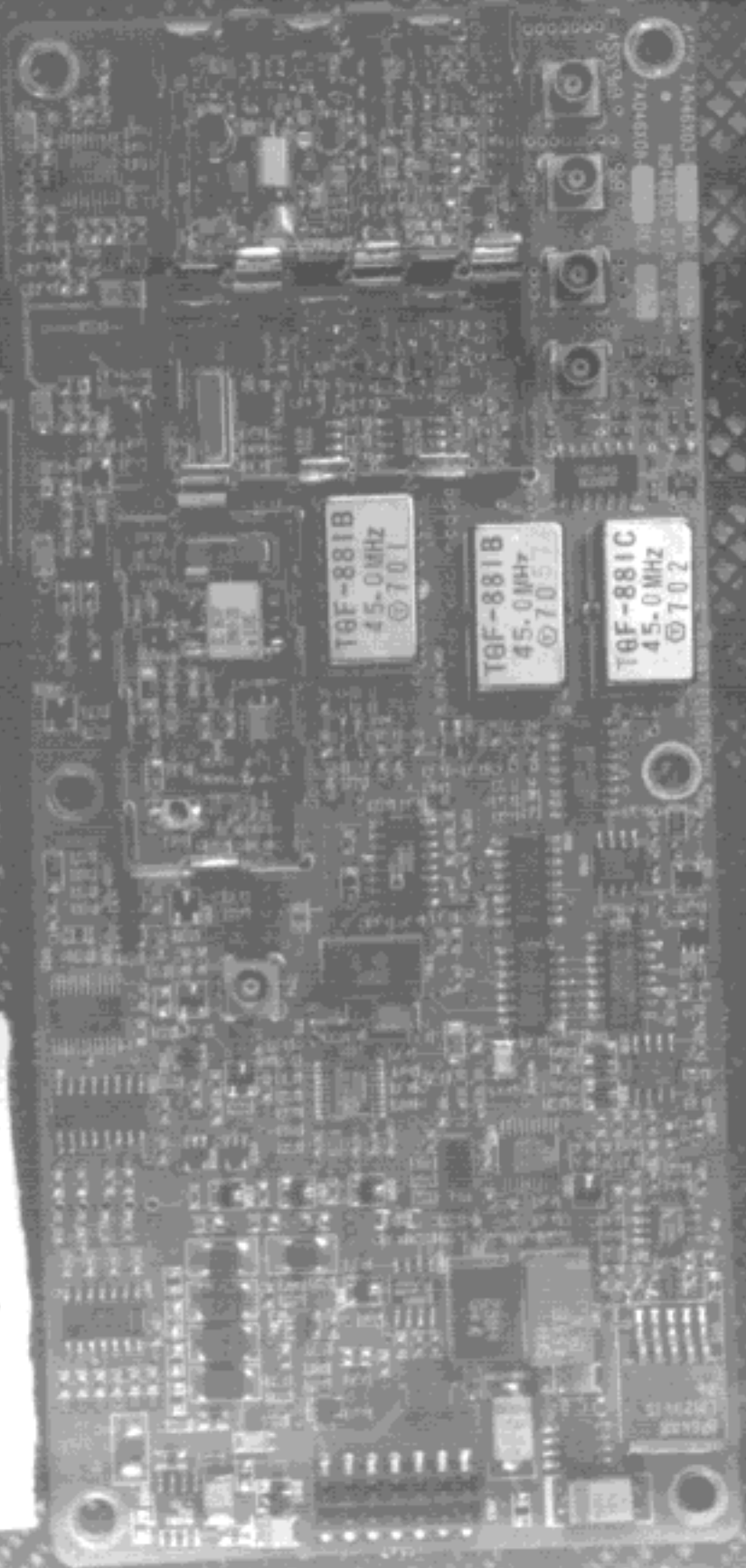
FUTURE COM
CM 900 H P



FUTURECOM
CM 900 H P

121A10149K CONECT 9449

FUTVRECOM
Sim 900 H P



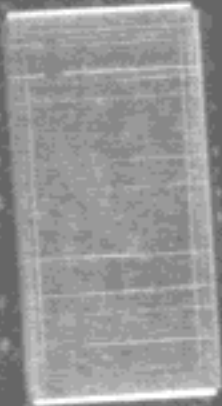
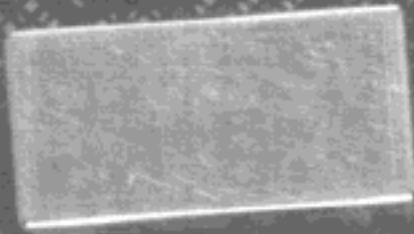
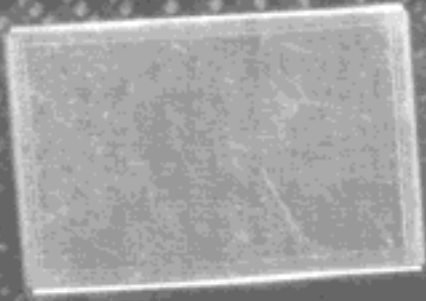
T8F-881C
45.0MHz
@ 702

T8F-881B
45.0MHz
@ 702

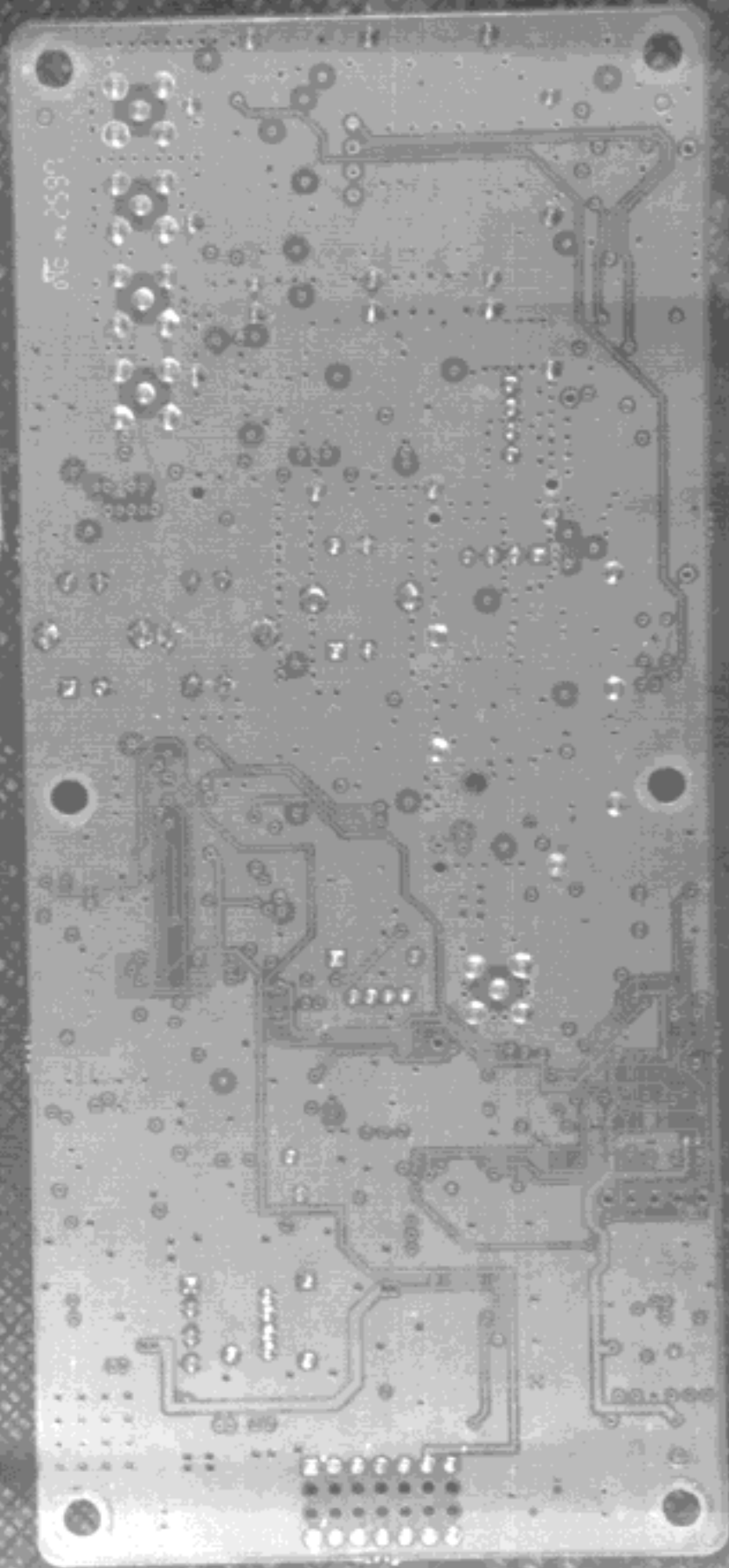
T8F-881B
45.0MHz
@ 701

SI 1625
200000

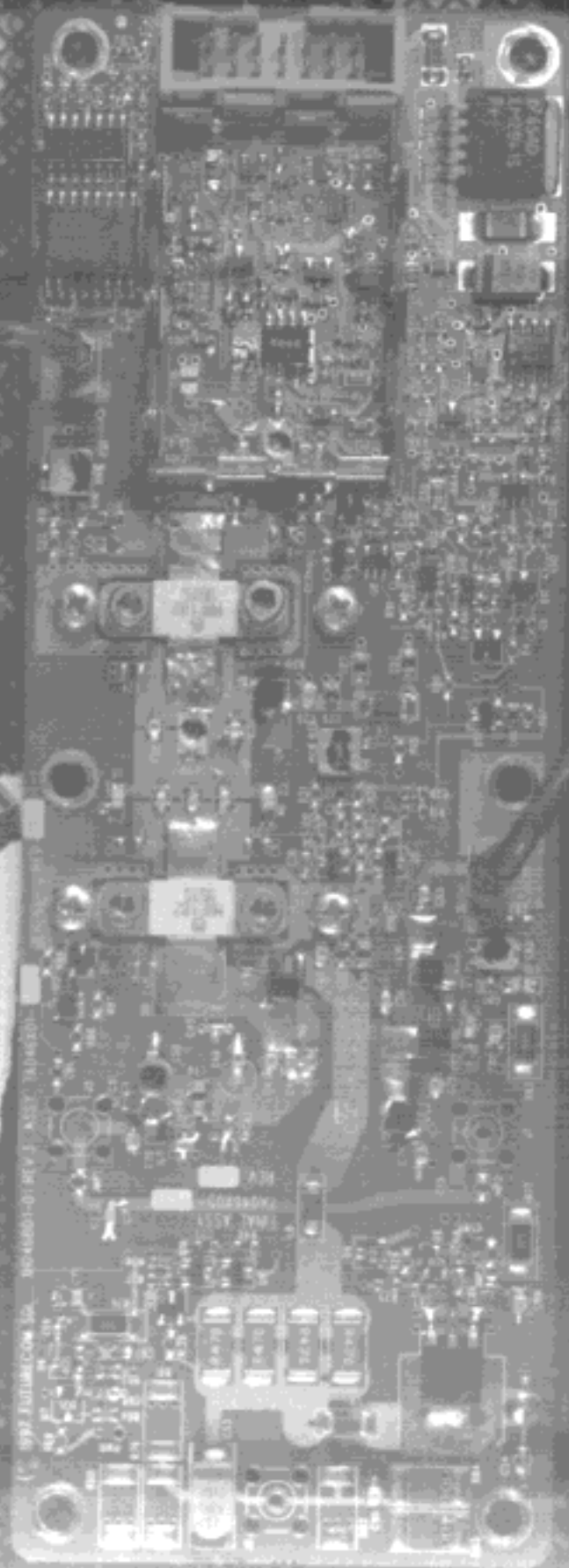
803510VZ
10-00391024
1003910V



FRONTRELOM
- 400 HP



FUTURECOM
CM 900 H





FUTURECOM
CM 900 HP

(C) 1995
FUTURECOM SCI
H038A16-01 REV.0
ASSY
7R038X02

