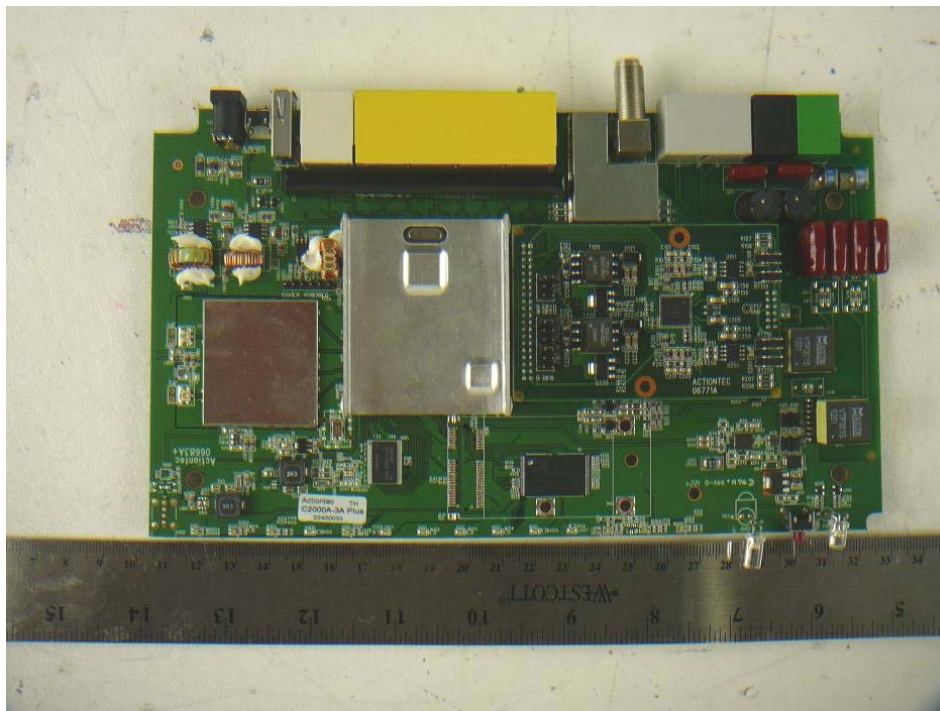
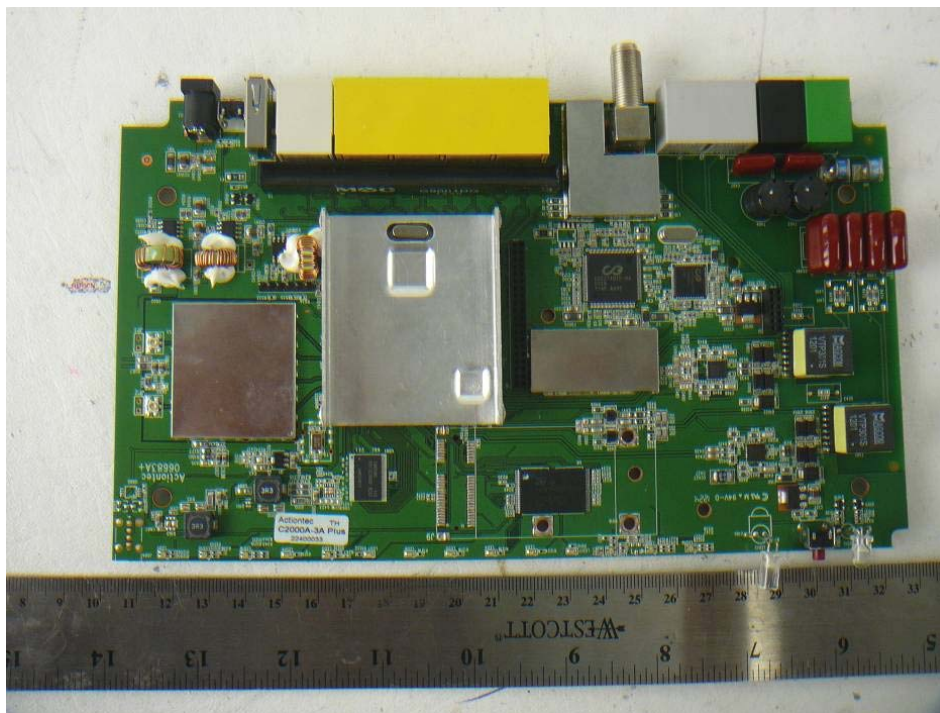


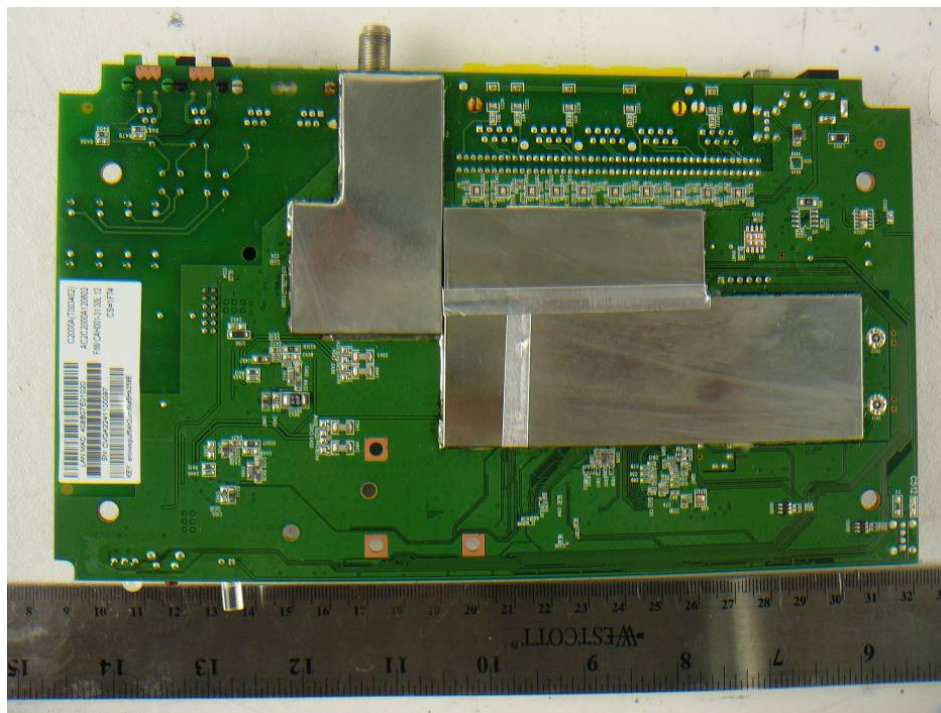
15.13 EUT – Open View (C2000A)



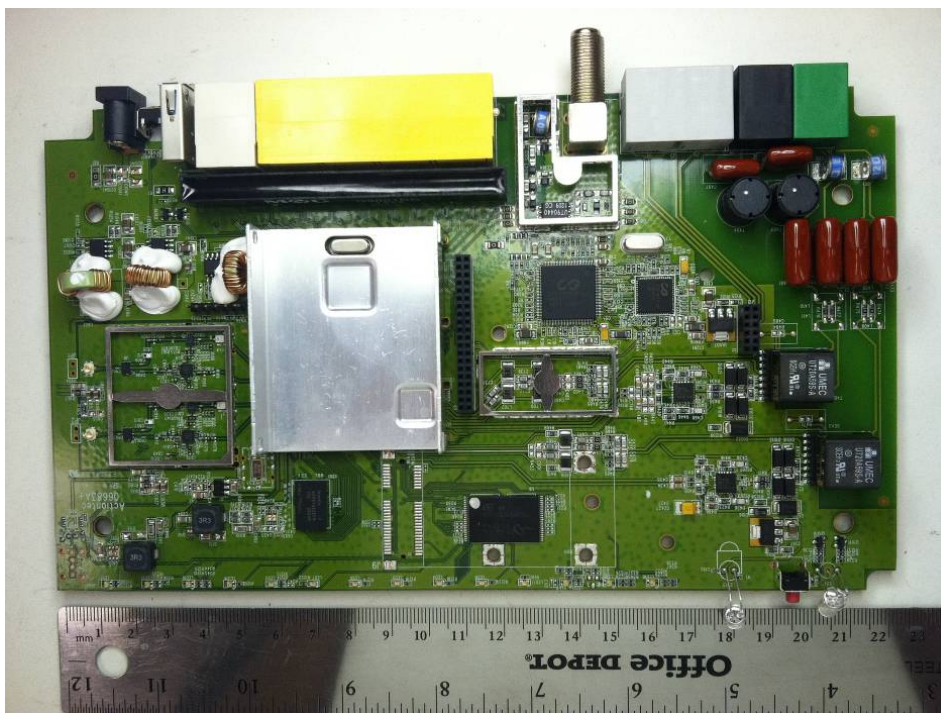
15.14 EUT – Main PCB Top View (C2000A)



15.15 EUT – Main PCB Bottom View (C2000A)



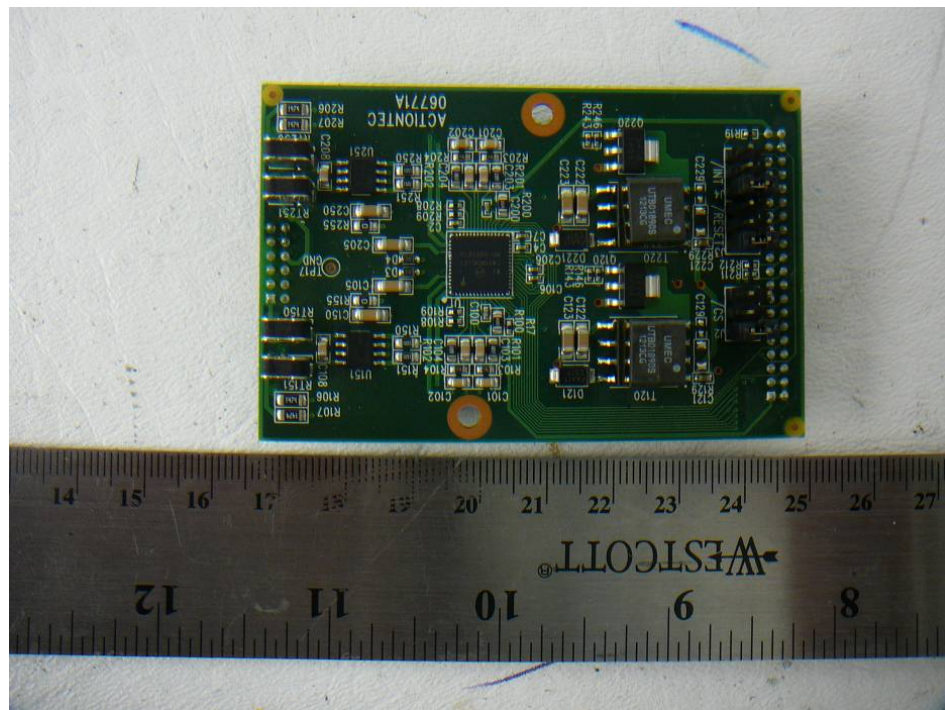
15.16 EUT – Main PCB Top View without shielding (C2000A)



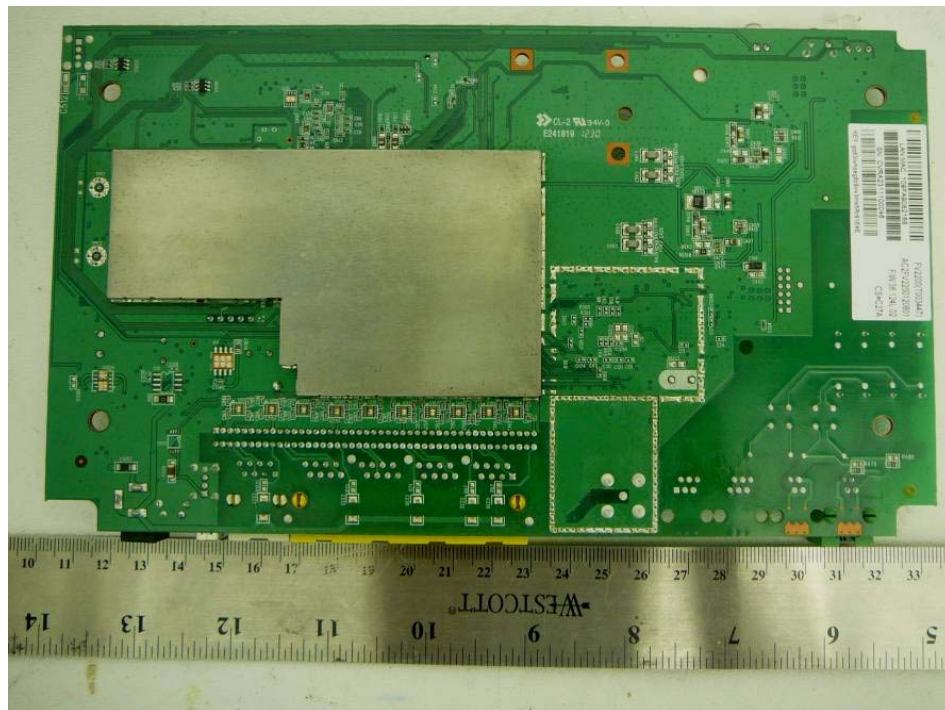
15.17 EUT – Main PCB Bottom View without shielding (C2000A)



15.18 EUT – Support PCB Top View (C2000A)



15.21 EUT – Solder View (FV2200-MAGCOM)



15.22 EUT – Port View (FV2200-MAGCOM)

