

# Antenna Information

## 1. Antenna Specification

Transmission Antenna assembly overview

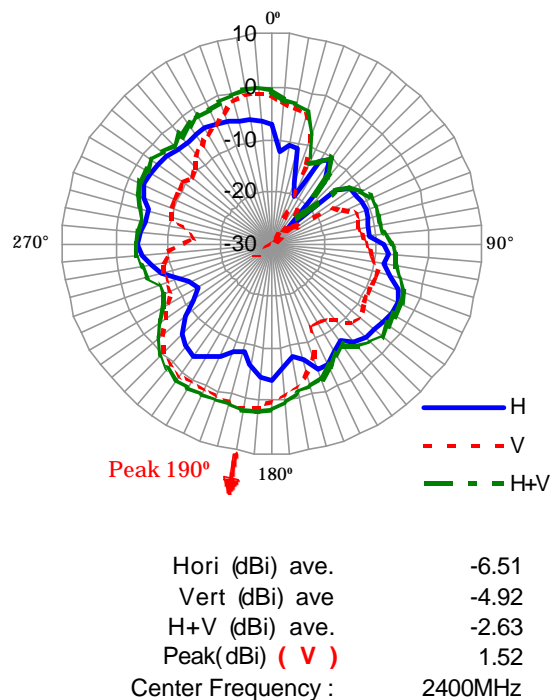
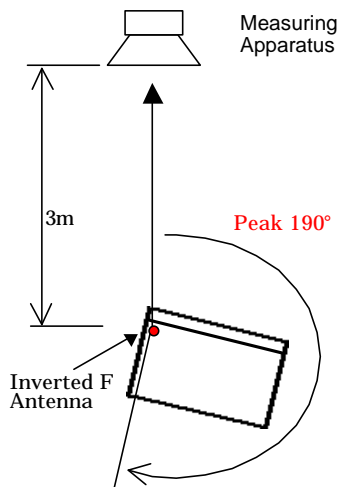
Manufacture	Antenna type	Cable type and length	Gain (dBi) Note 1)
<b>Amphenol K.A.E.</b>	<b>Inverted F type Antenna</b>	<b>coax 80mm</b>	<b>1.52 dBi (peak)</b>

Notes:

1a. Includes all cable losses.

1b. Antenna type should be Omni Directional and have gain of 2.0 dBi or less, regarding the IBM internal specification.

## 2. Radiation characteristic of antennas

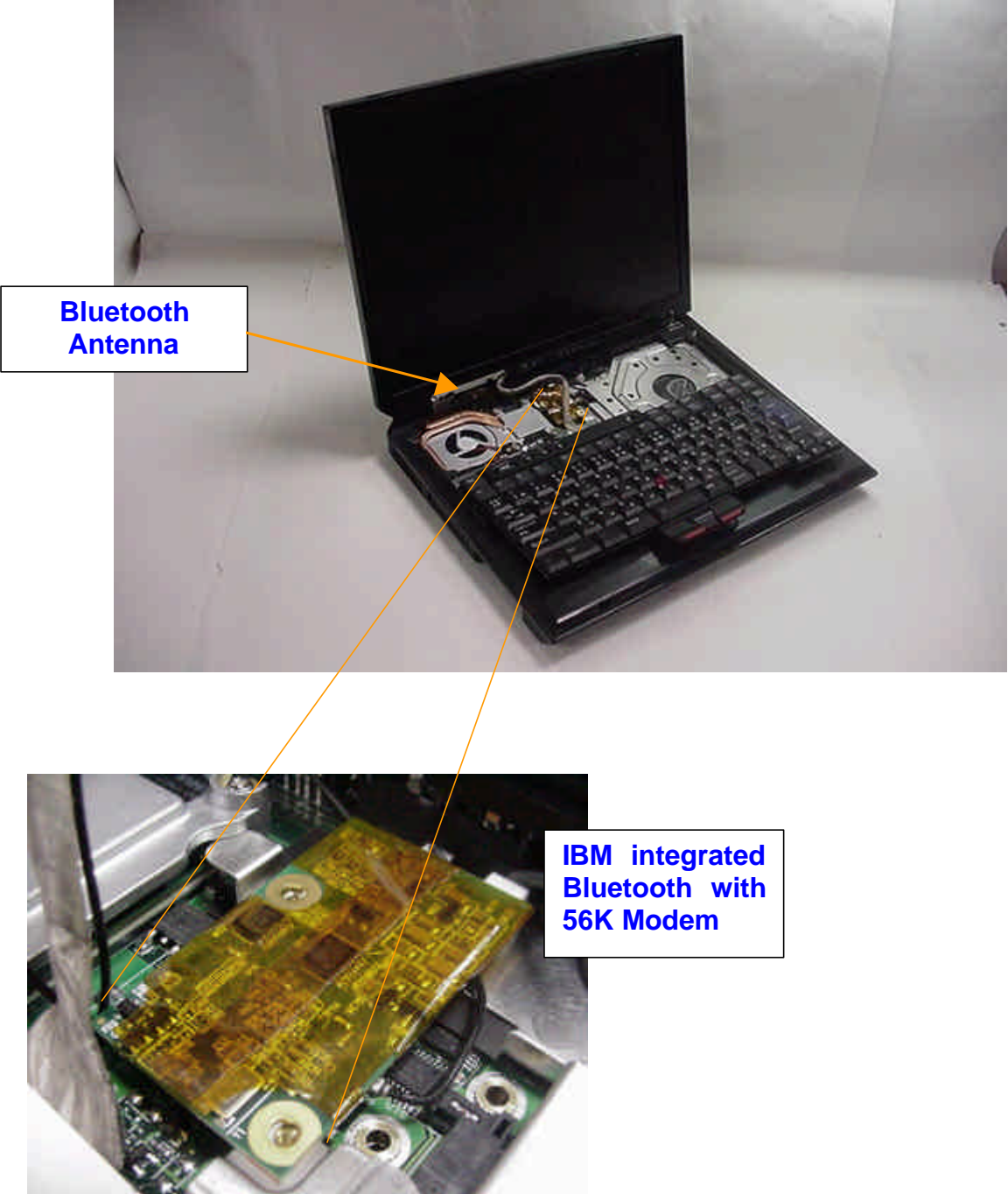


Note1) The measurement was performed at 3 frequencies (2400, 2450, 2500MHz).

Note2) The maximum antenna gain was found around **190 degree** angle from measuring apparatus in **Vertical** polarization at the middle frequency (2400MHz).

### **3. Host PC Information**

The inverted F-figure type antenna is built in the left side hinge section of main body.



IBM ThinkPad R40 Series, LCD 15 inch Model



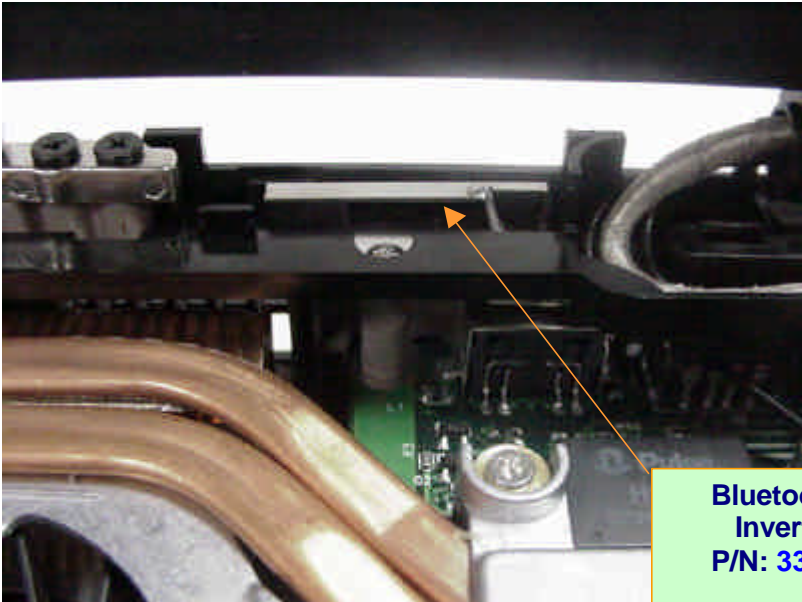
IBM ThinkPad R40 Series, LCD 14 inch Model



**IBM ThinkPad R40 Series, LCD 13 inch Model**

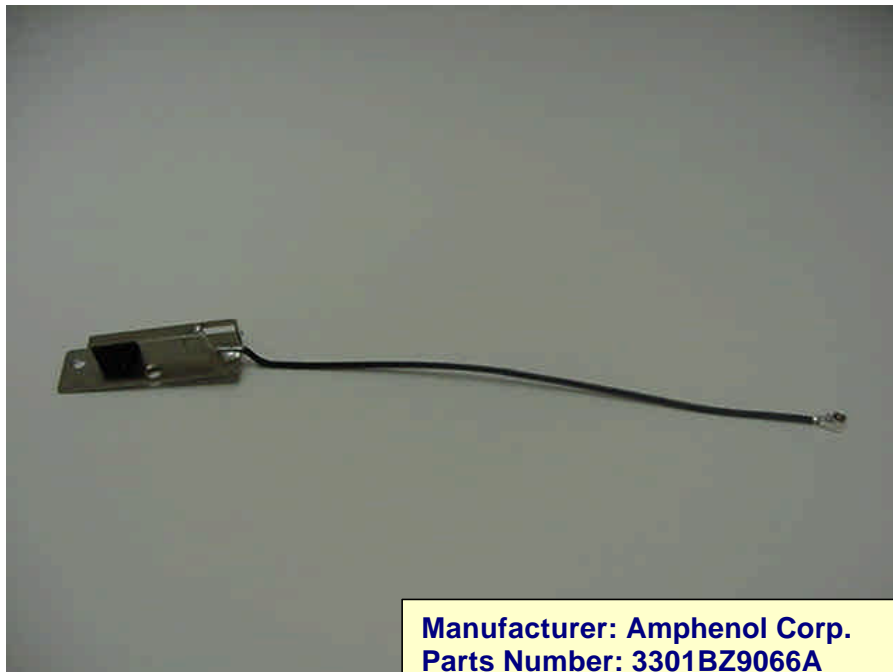
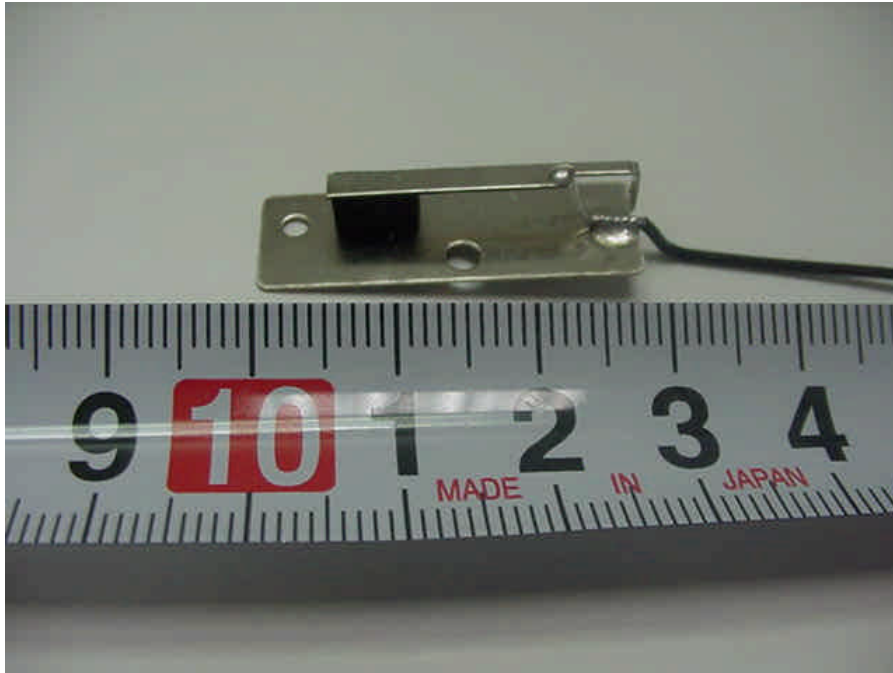


**4. Antenna Location**



**Bluetooth Antenna  
Inverted-F type  
P/N: 3301BZ9066A**

## 5. Exterior Photos of Antennas



**Manufacturer: Amphenol Corp.**  
**Parts Number: 3301BZ9066A**  
**Inverted-F type antenna**  
**Cable : coax 80 mm**