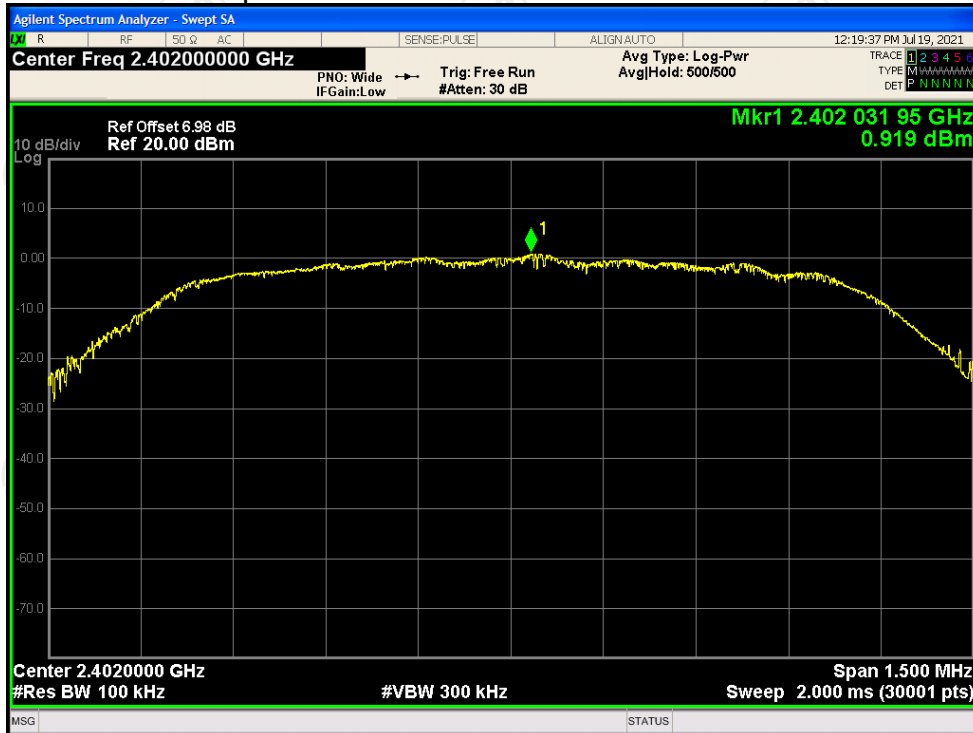
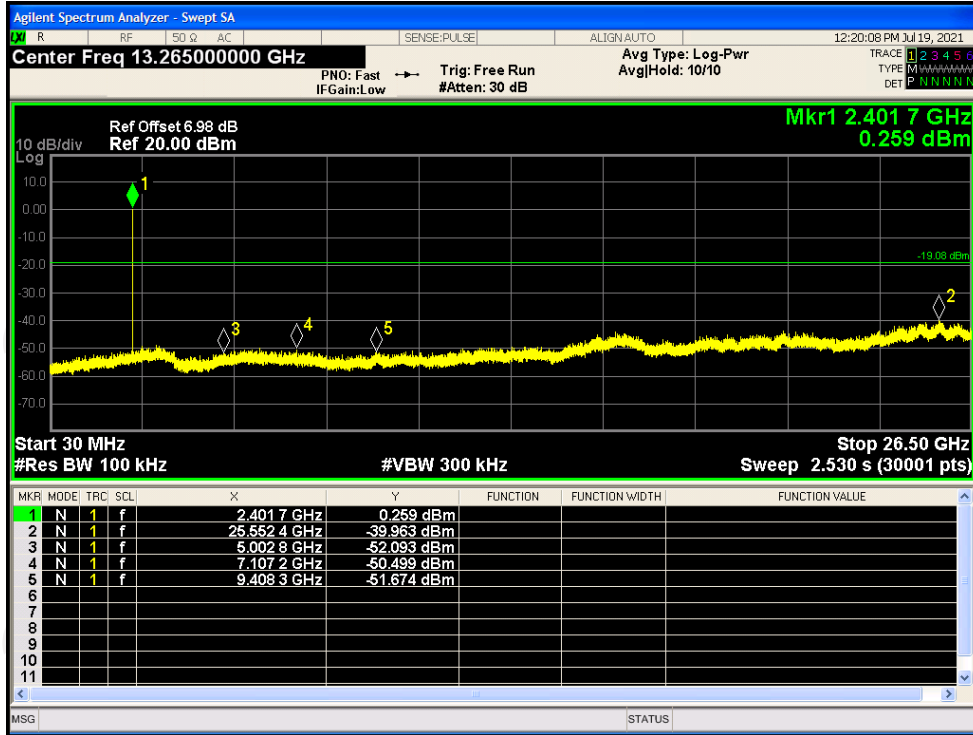


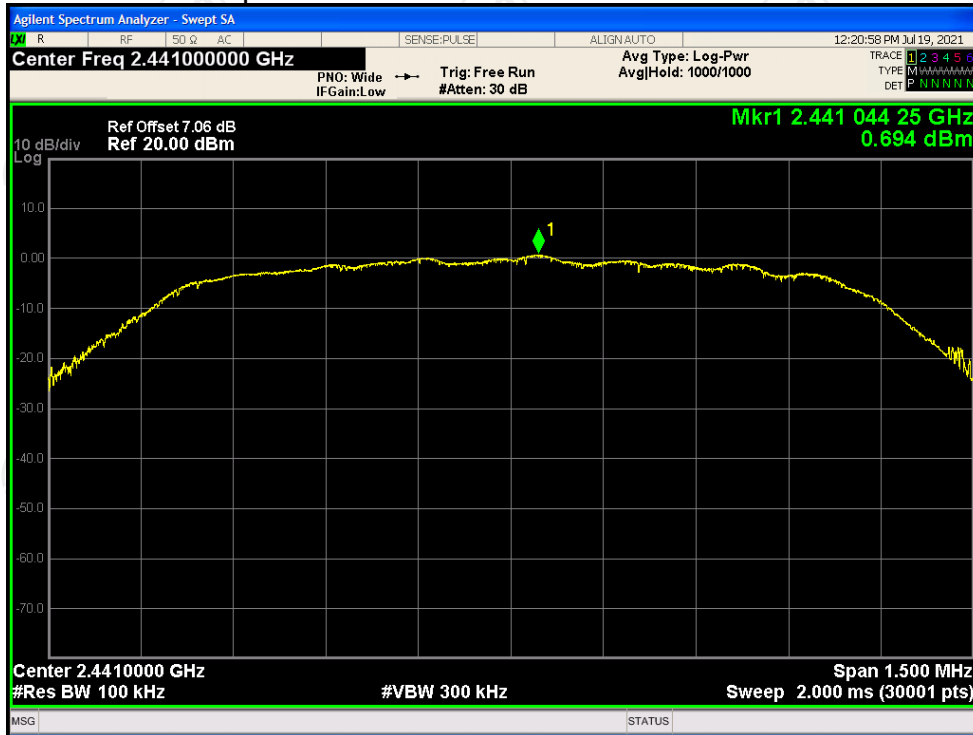
Tx. Spurious NVNT 2-DH1 2402MHz Ant1 Ref



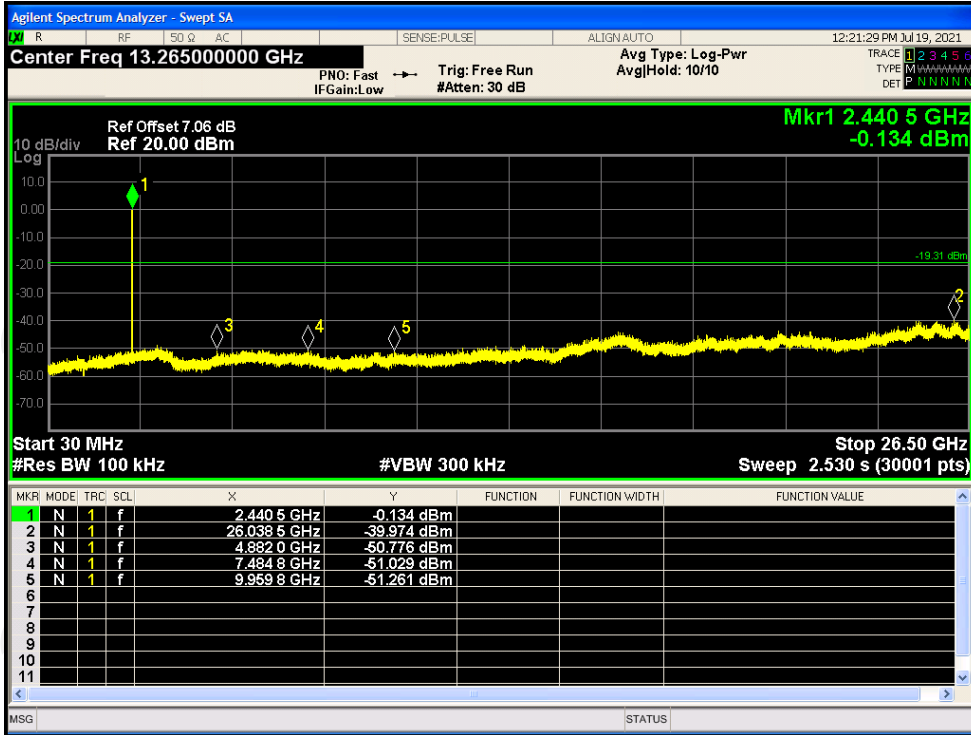
Tx. Spurious NVNT 2-DH1 2402MHz Ant1 Emission



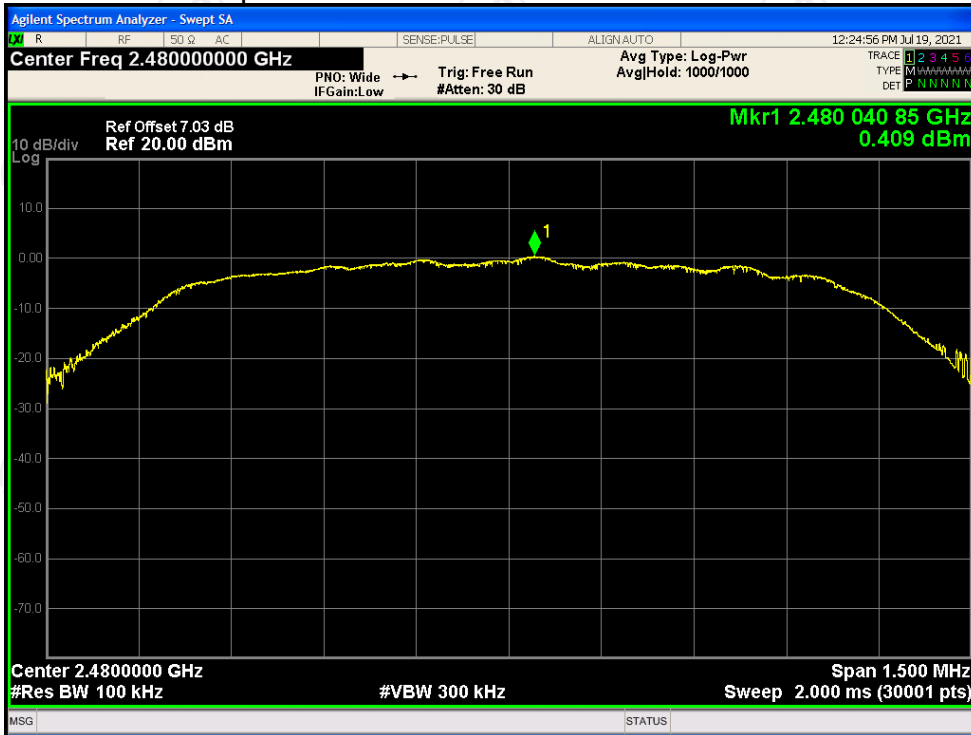
Tx. Spurious NVNT 2-DH1 2441MHz Ant1 Ref



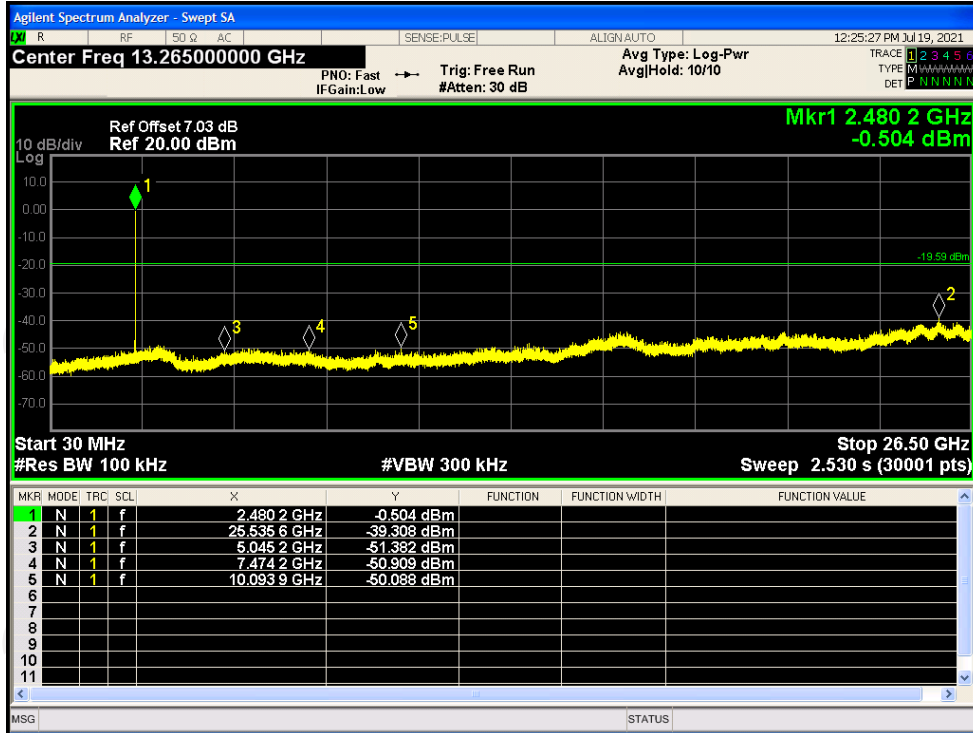
Tx. Spurious NVNT 2-DH1 2441MHz Ant1 Emission



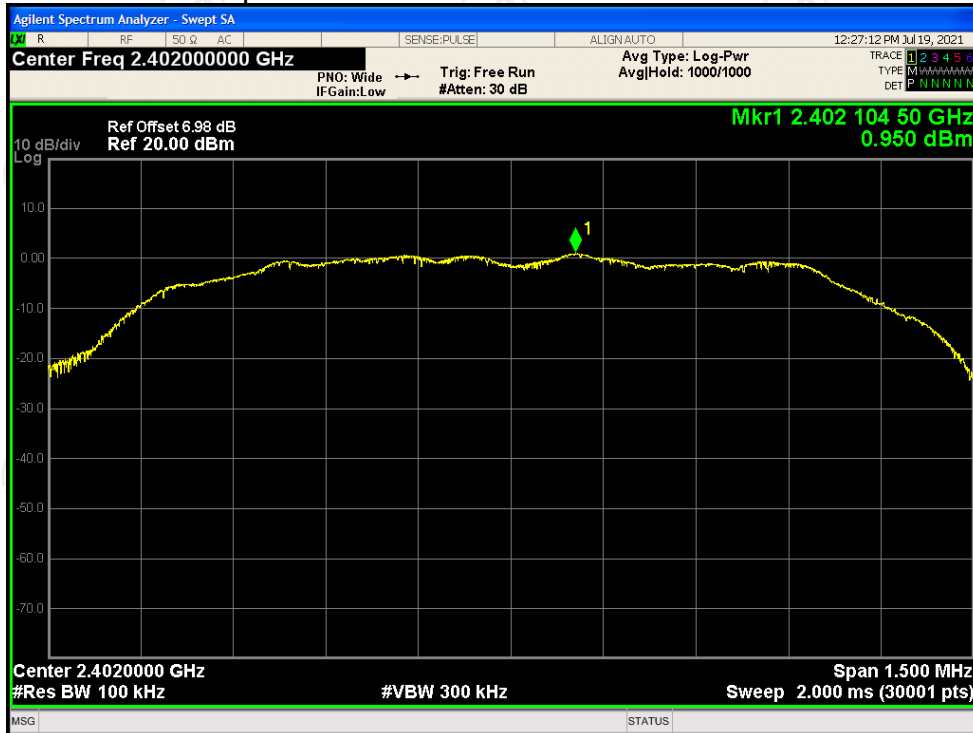
Tx. Spurious NVNT 2-DH1 2480MHz Ant1 Ref



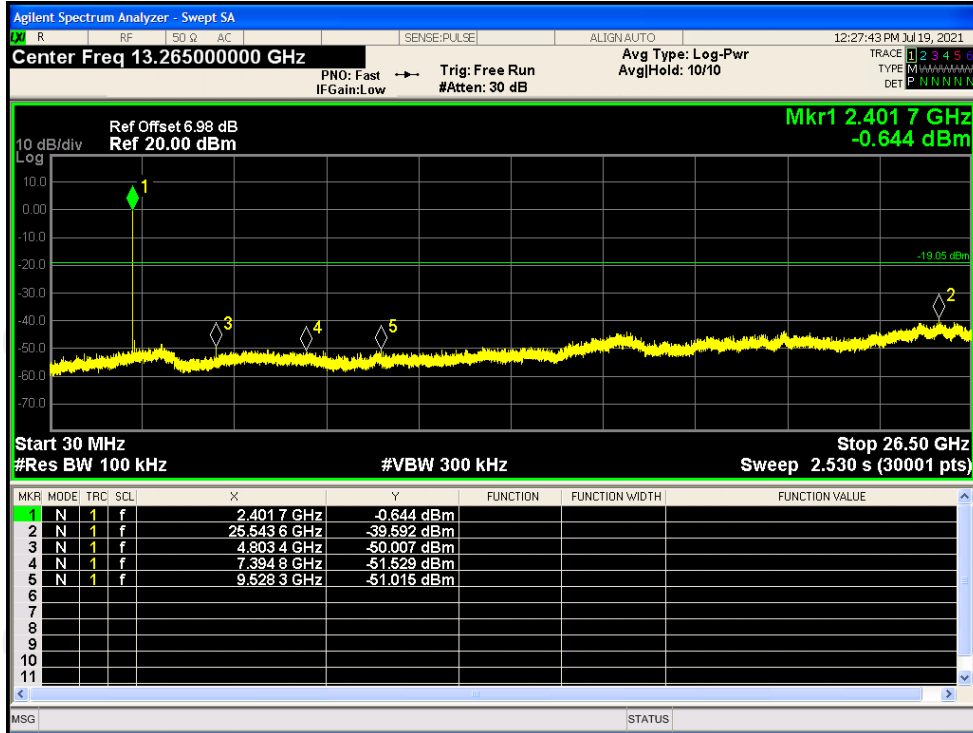
Tx. Spurious NVNT 2-DH1 2480MHz Ant1 Emission



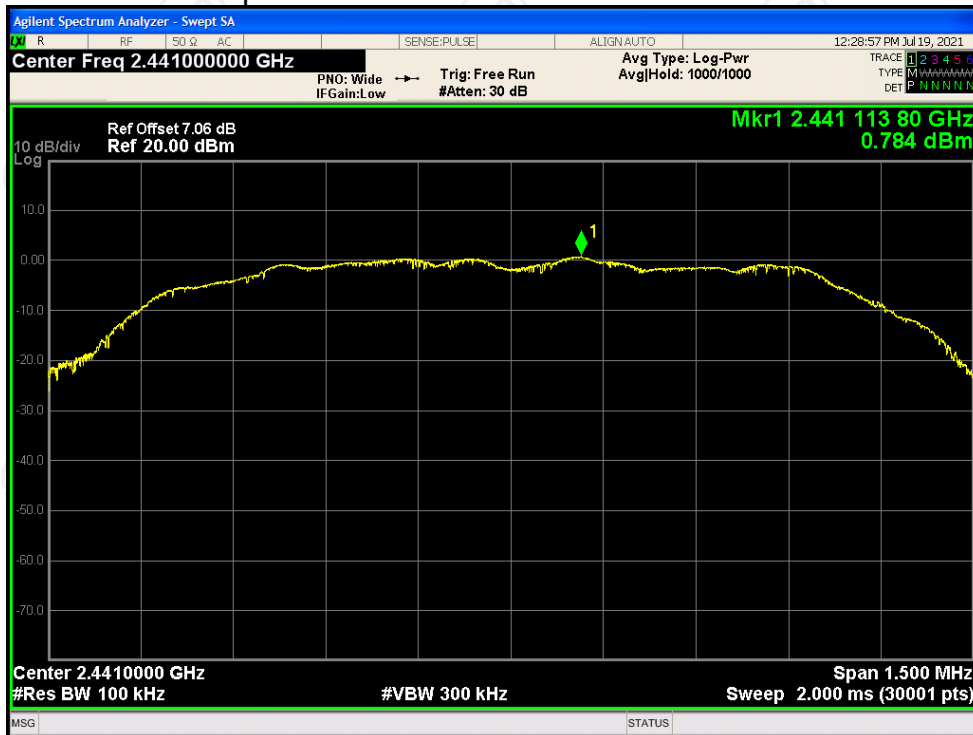
Tx. Spurious NVNT 3-DH1 2402MHz Ant1 Ref



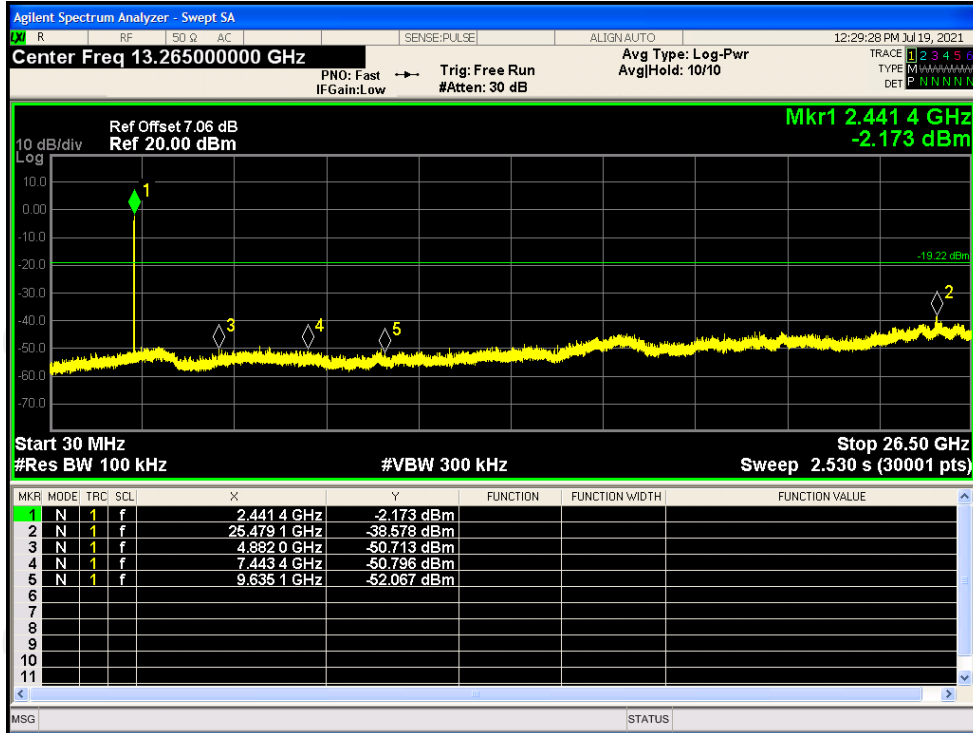
Tx. Spurious NVNT 3-DH1 2402MHz Ant1 Emission



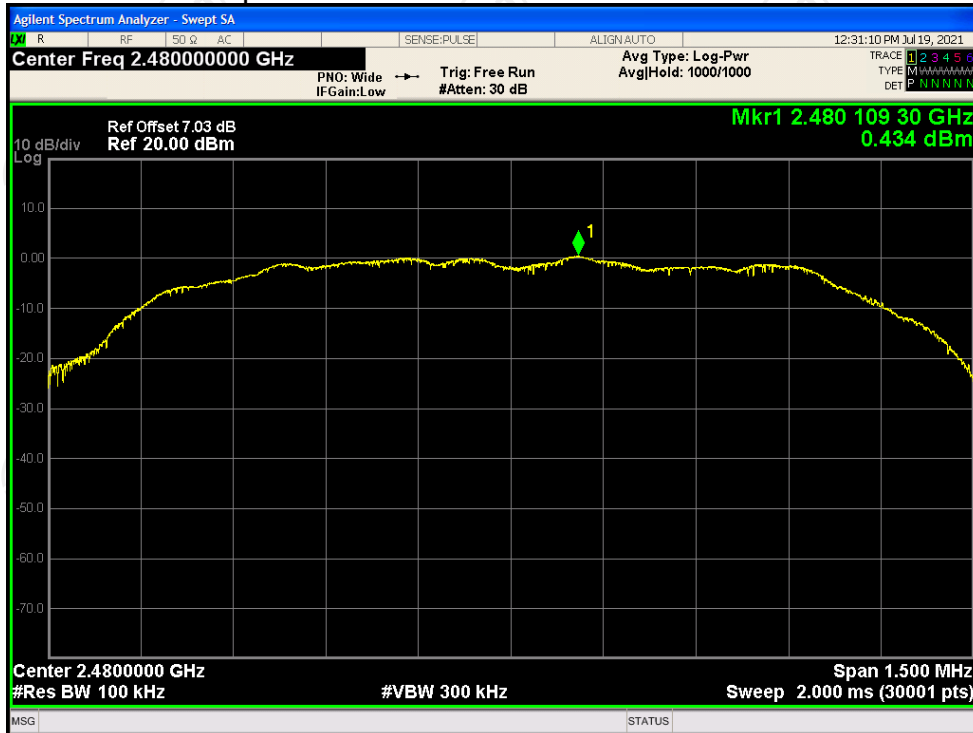
Tx. Spurious NVNT 3-DH1 2441MHz Ant1 Ref



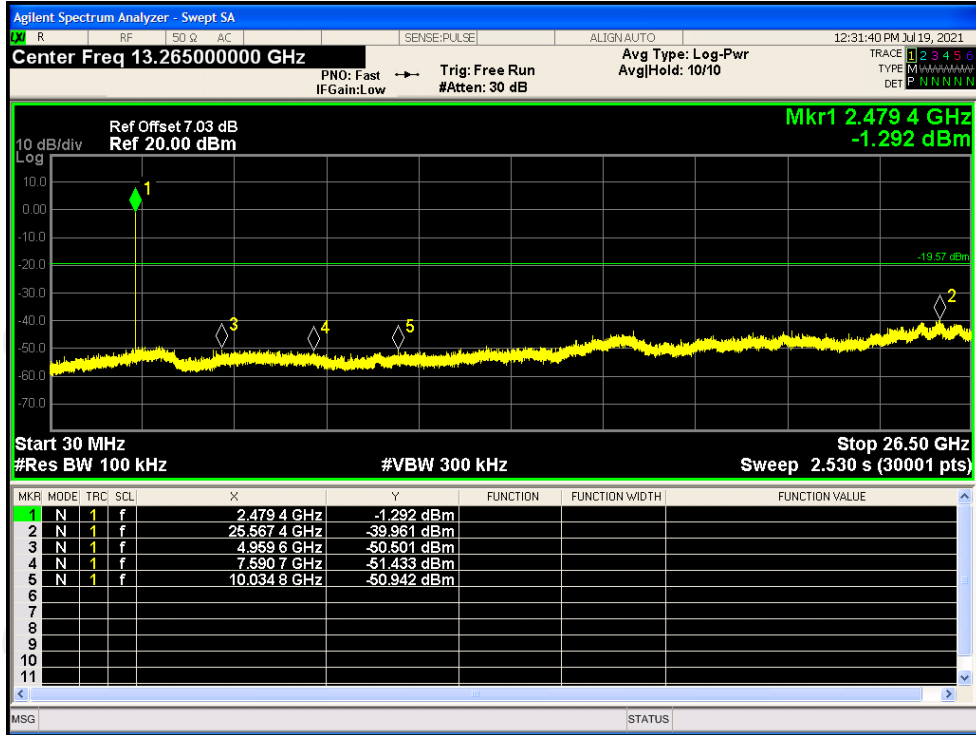
Tx. Spurious NVNT 3-DH1 2441MHz Ant1 Emission



Tx. Spurious NVNT 3-DH1 2480MHz Ant1 Ref



Tx. Spurious NVNT 3-DH1 2480MHz Ant1 Emission

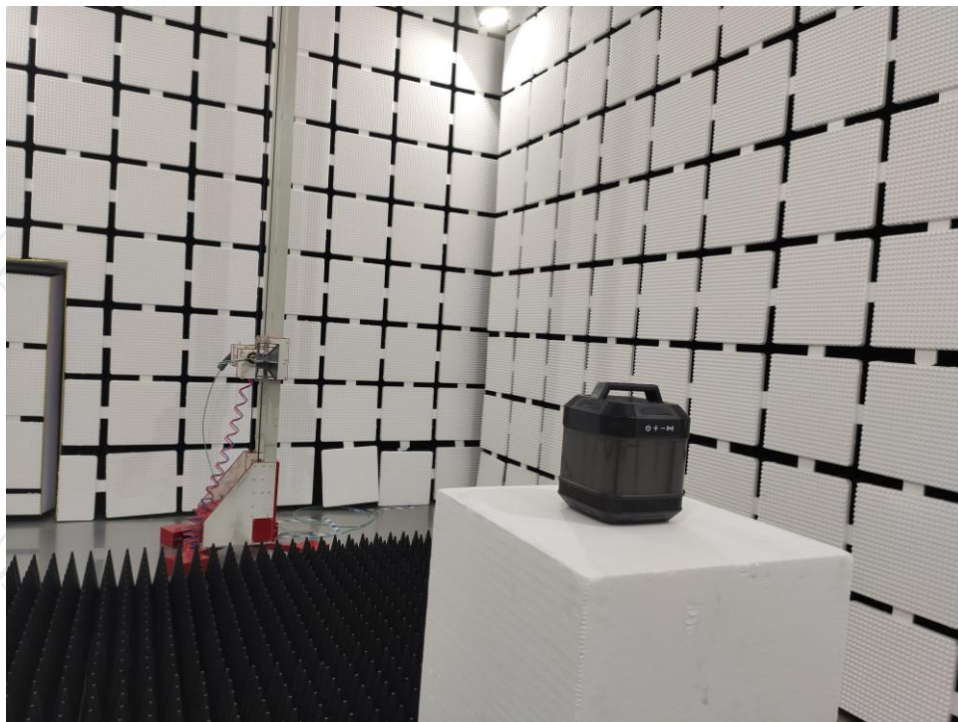
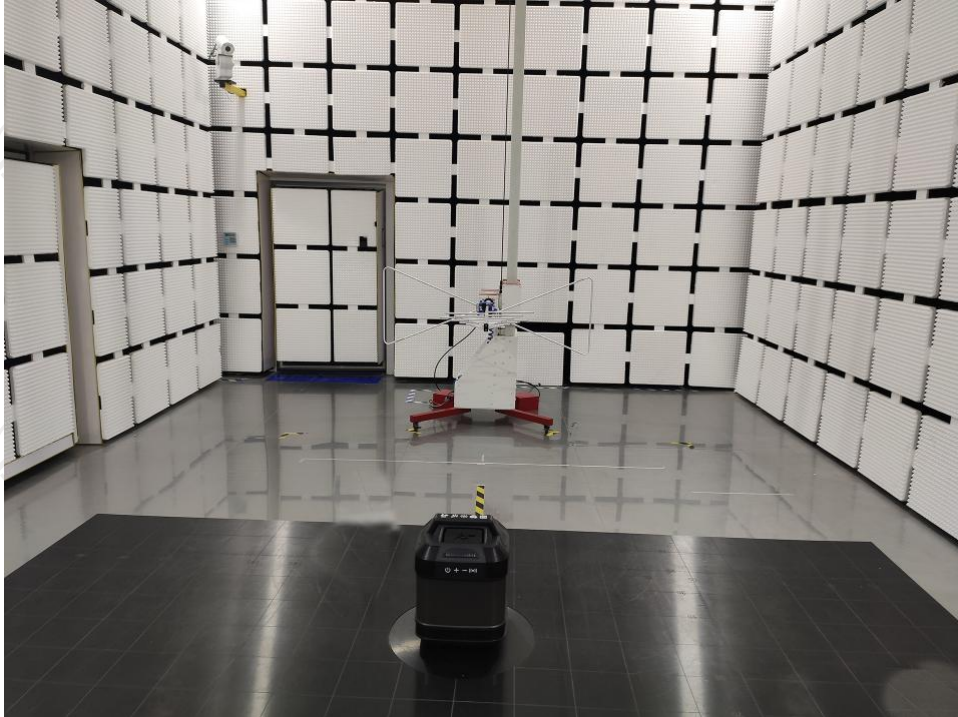


Appendix B: Photographs of Test Setup

Product: BLUETOOTH PARTY SPEAKER

Model: XB70

Radiated Emission

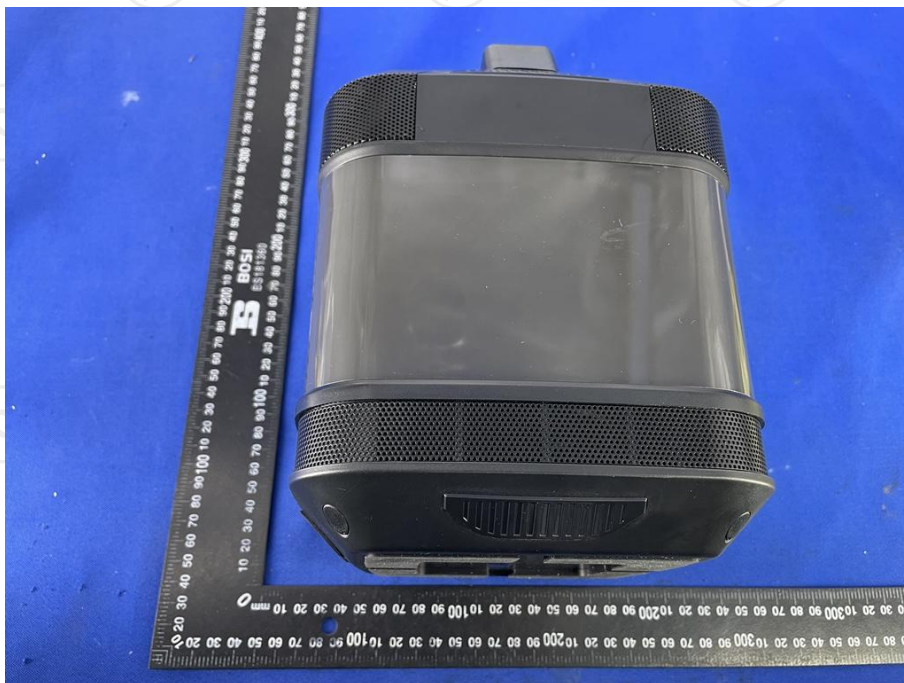
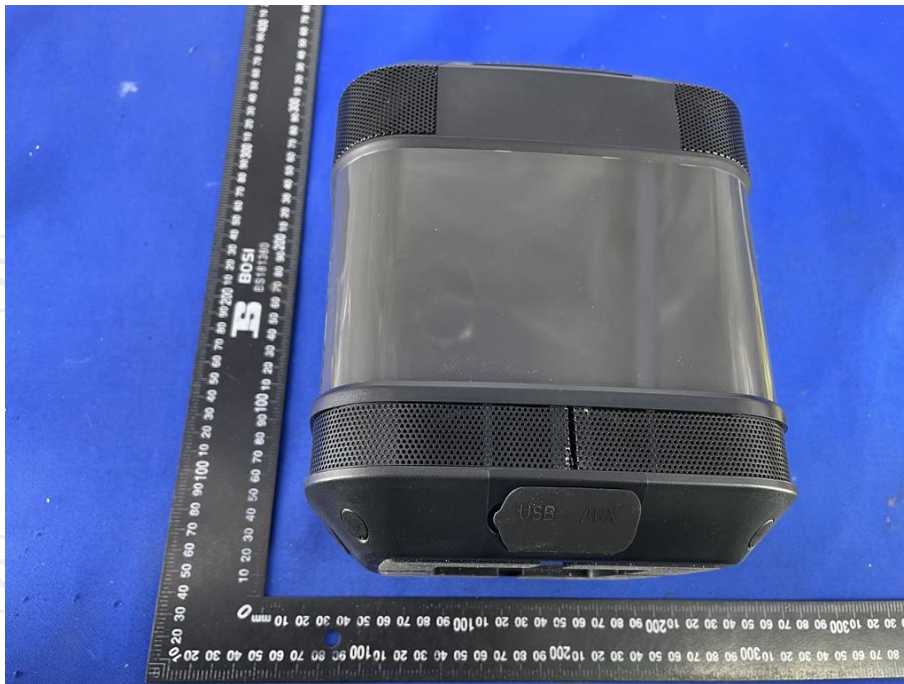


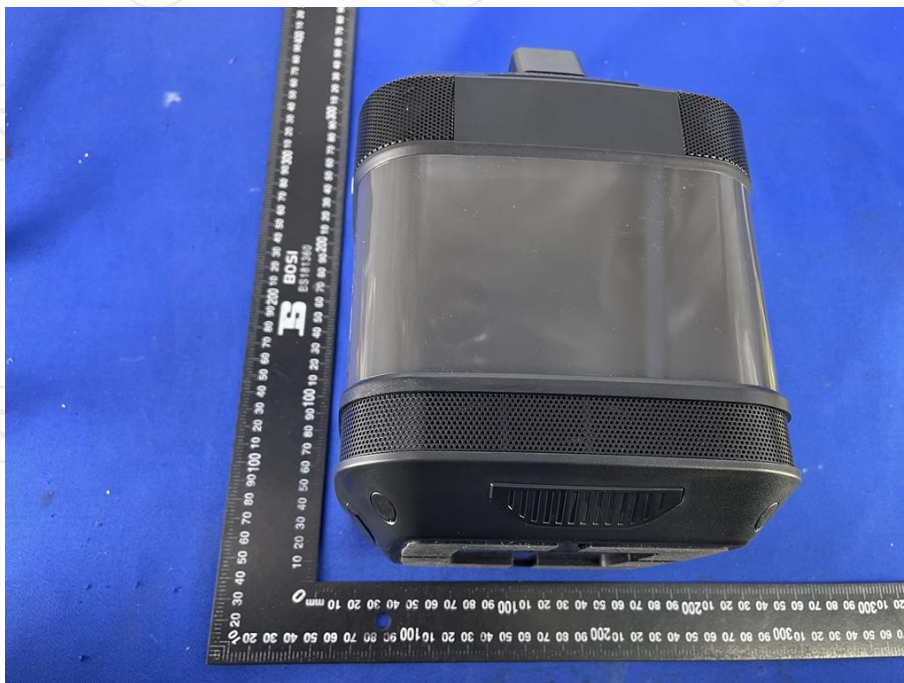
Conducted Emission



Appendix C: Photographs of EUT
Product: BLUETOOTH PARTY SPEAKER
Model: XB70
External Photos

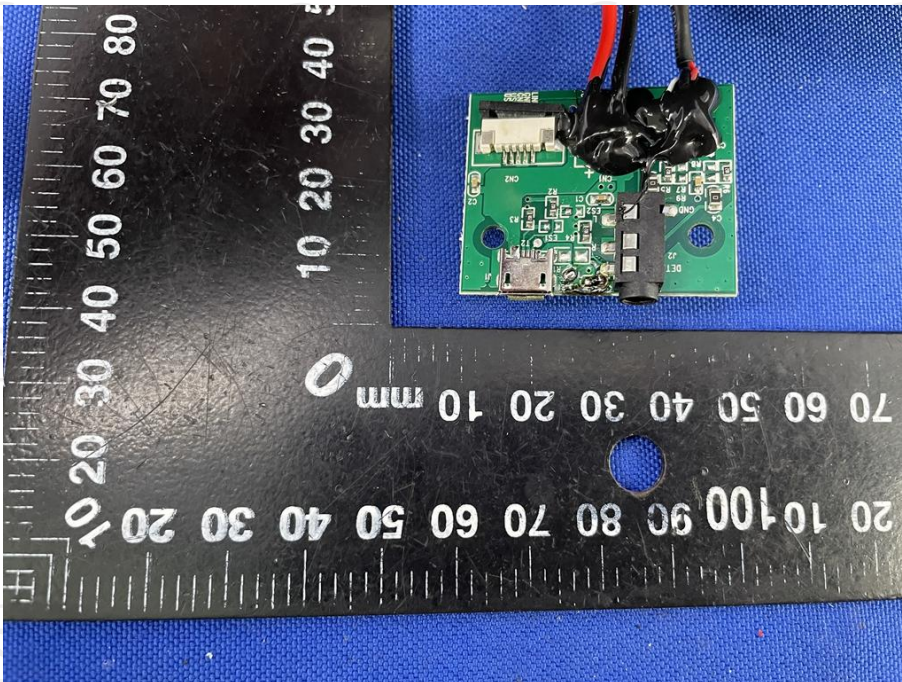


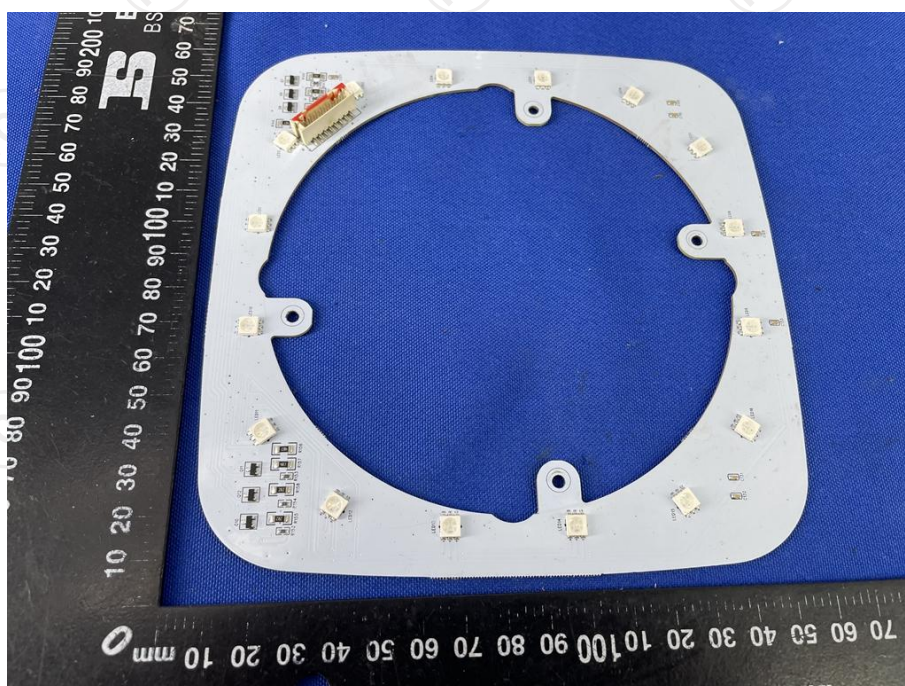
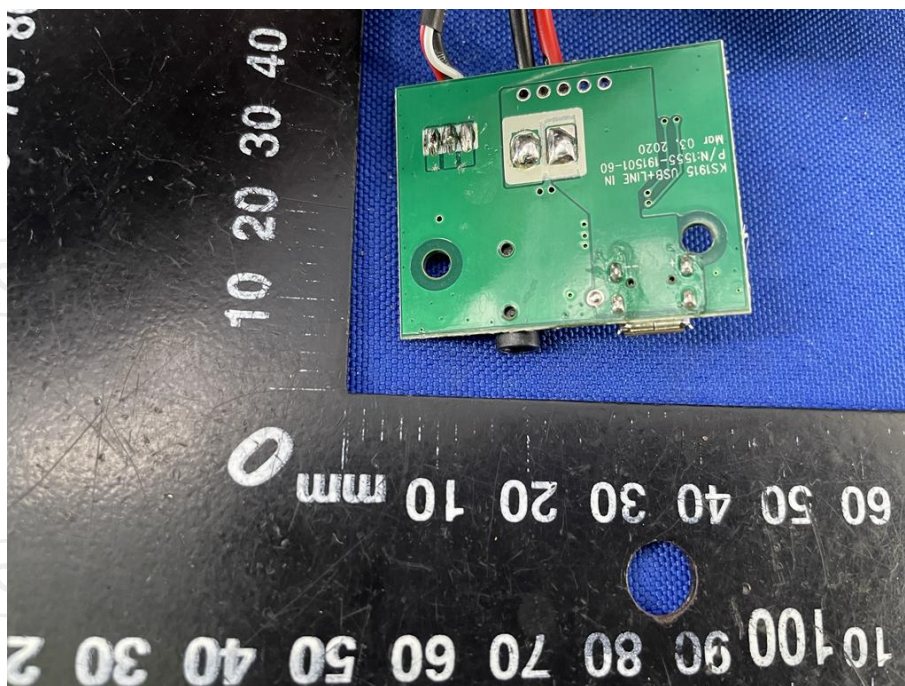


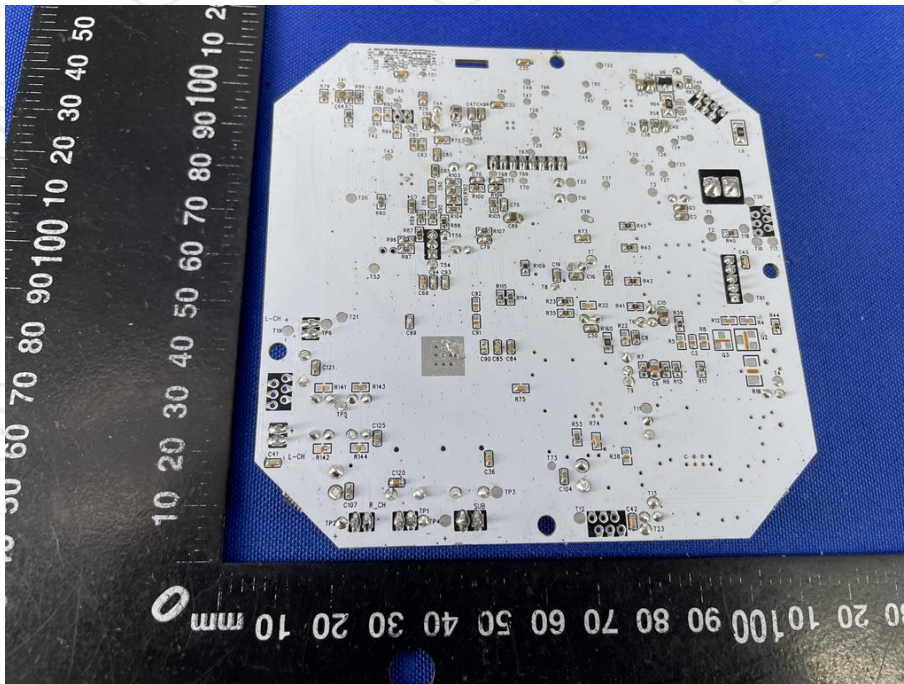
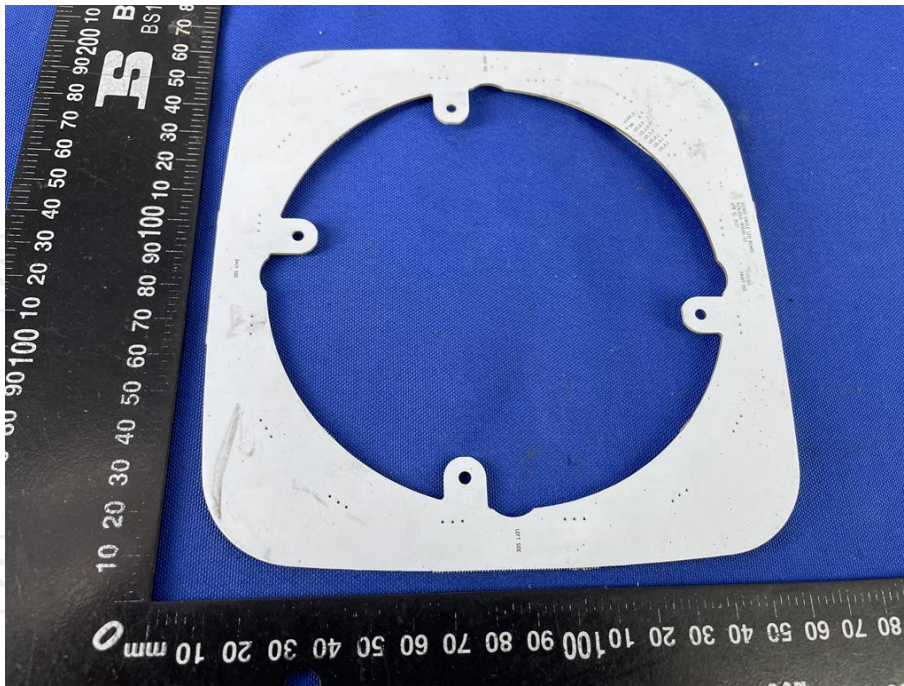


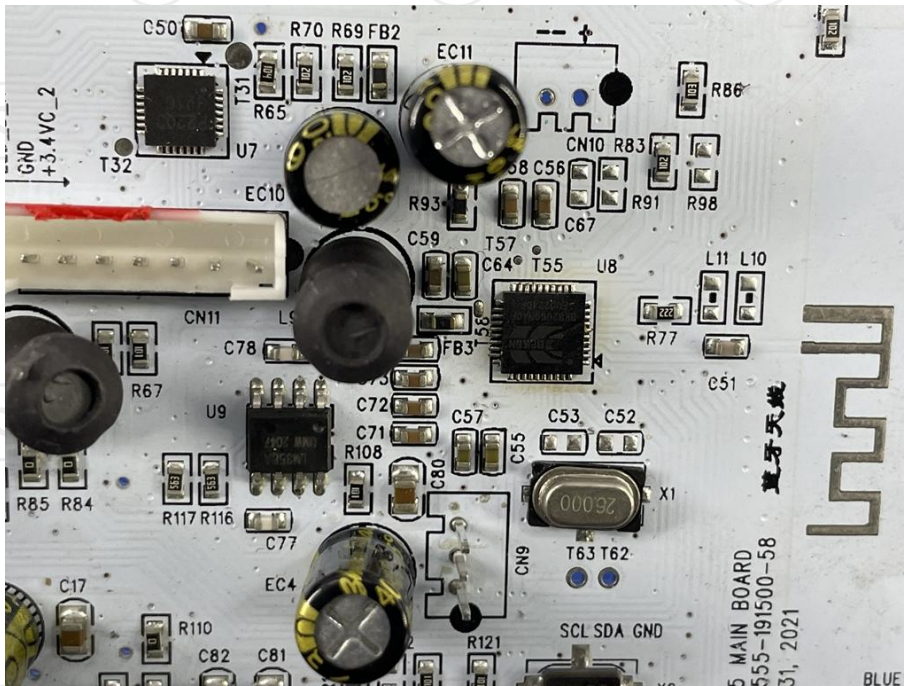
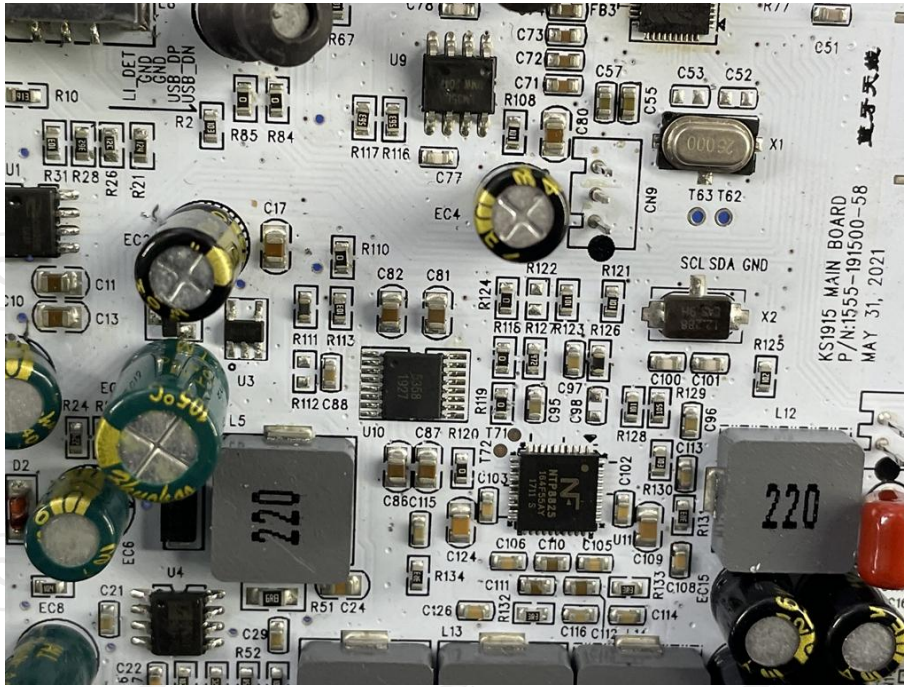


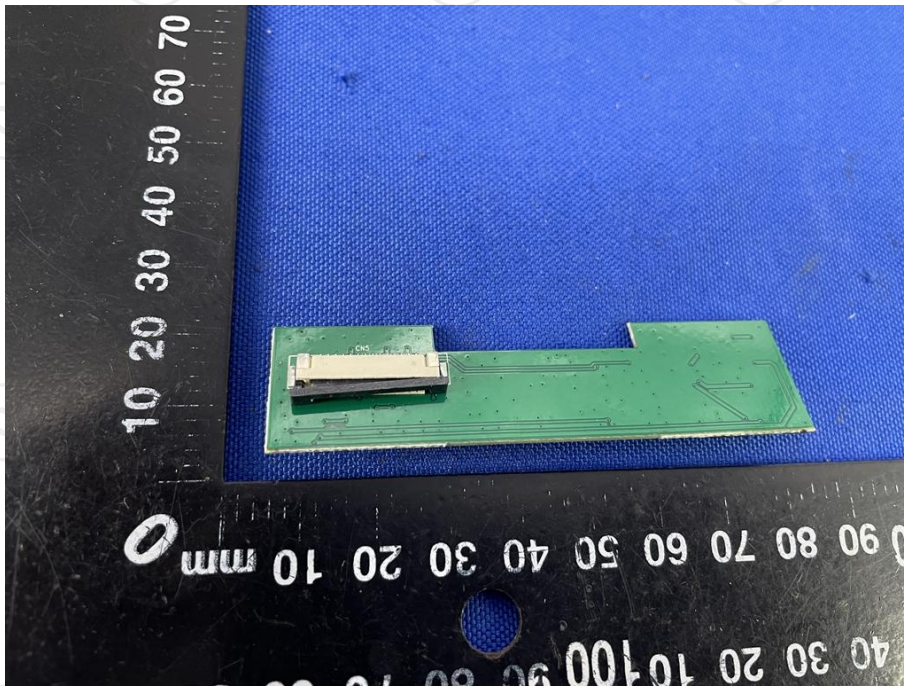
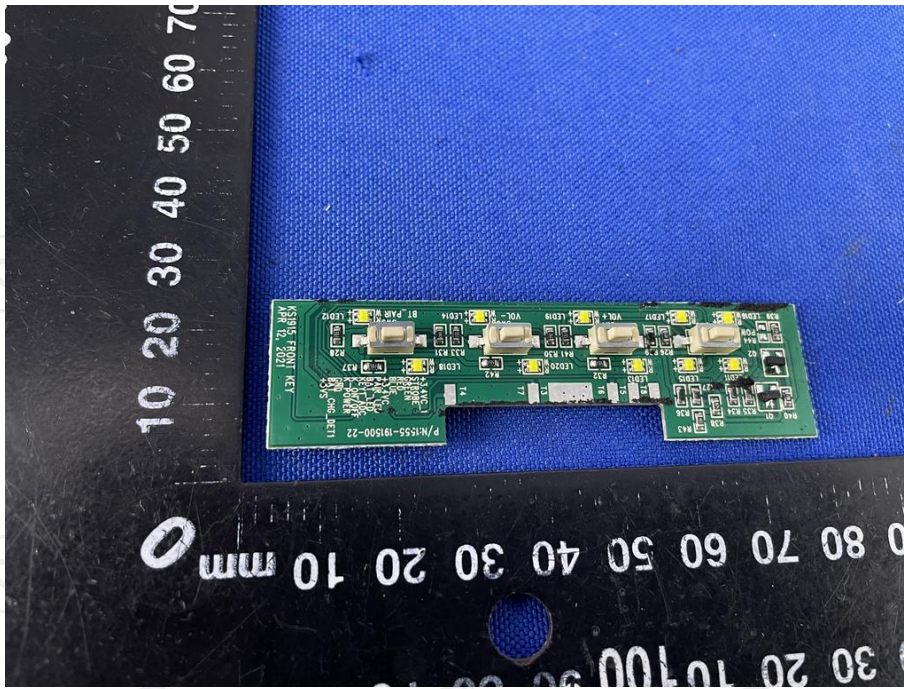
Product: BLUETOOTH PARTY SPEAKER
Model: XB70
Internal Photos

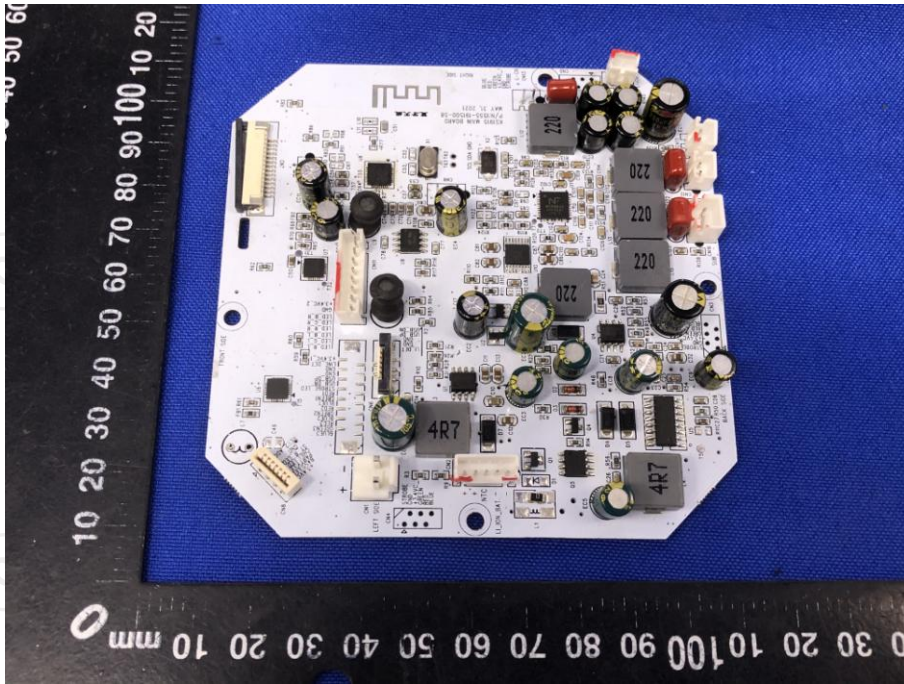












*******END OF REPORT*******