

**EUT PHOTOGRAPHS FOR 2.4GHz DIGITAL WIRELESS STEREO AMPLIFIER**

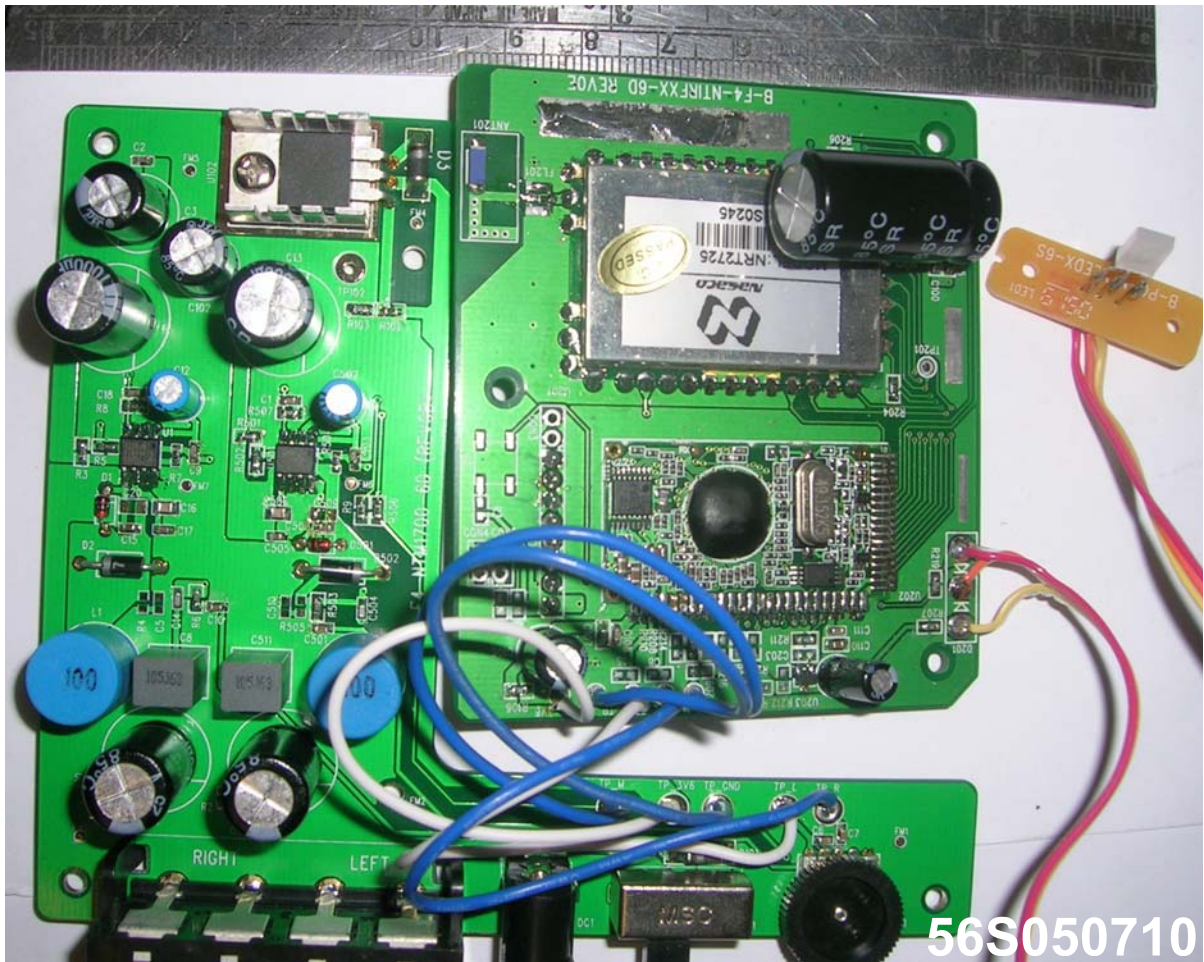


**Internal View 1**



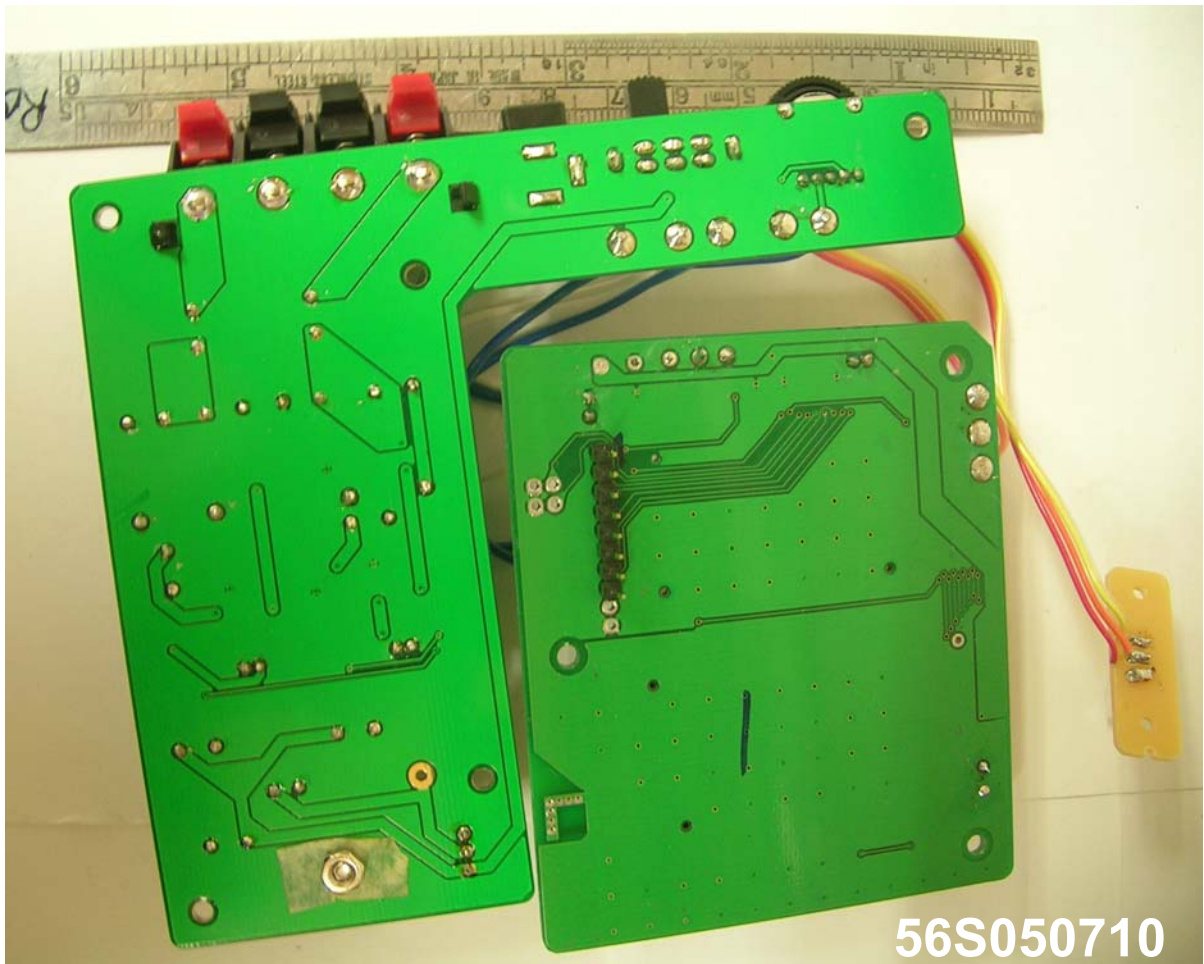
**Internal View 2**

**EUT PHOTOGRAPHS FOR 2.4GHz DIGITAL WIRELESS STEREO AMPLIFIER**



**EUT PCB Component Side (All PCBs)**

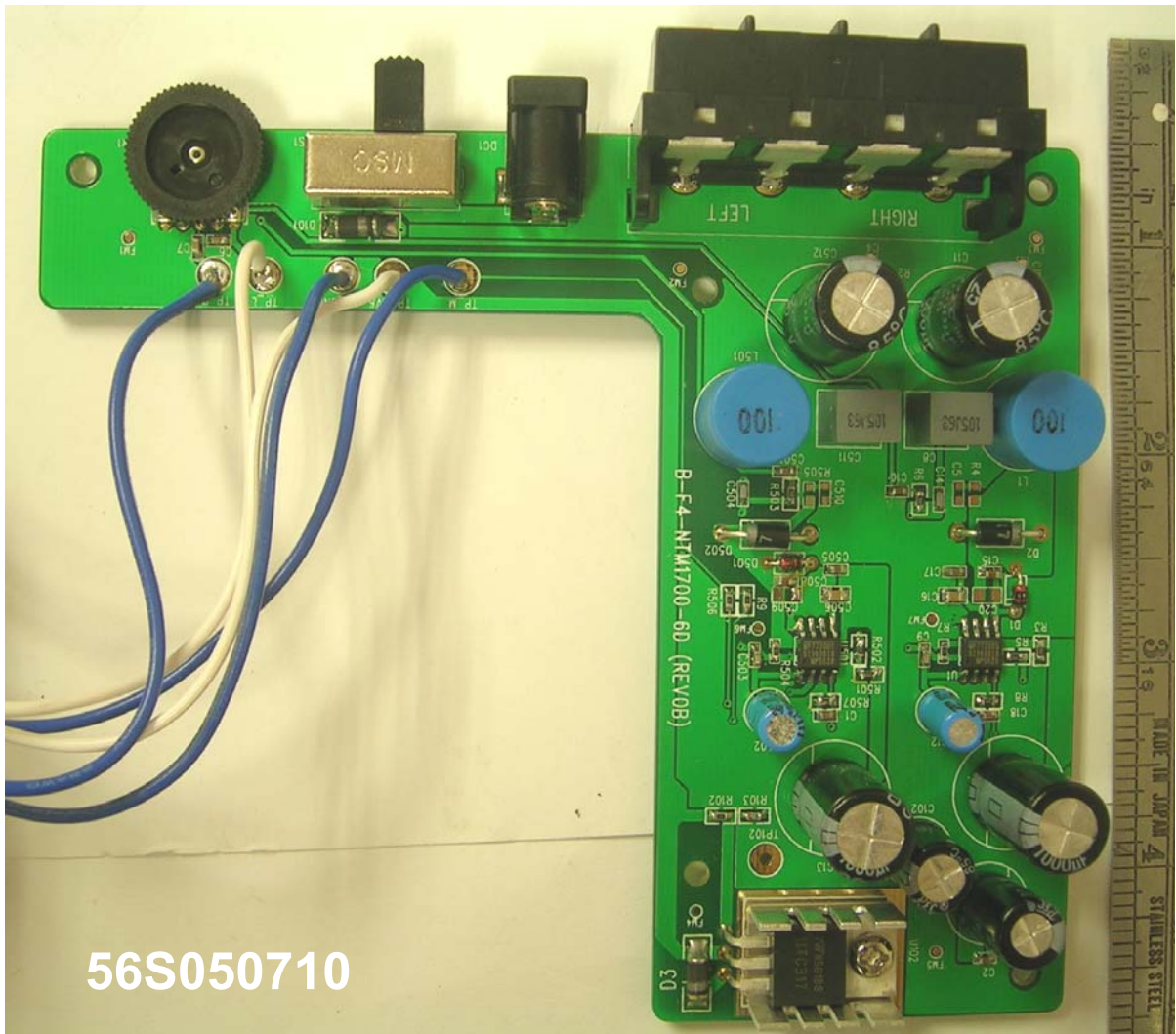
**EUT PHOTOGRAPHS FOR 2.4GHz DIGITAL WIRELESS STEREO AMPLIFIER**



**EUT PCB Trace Side (All PCBs)**



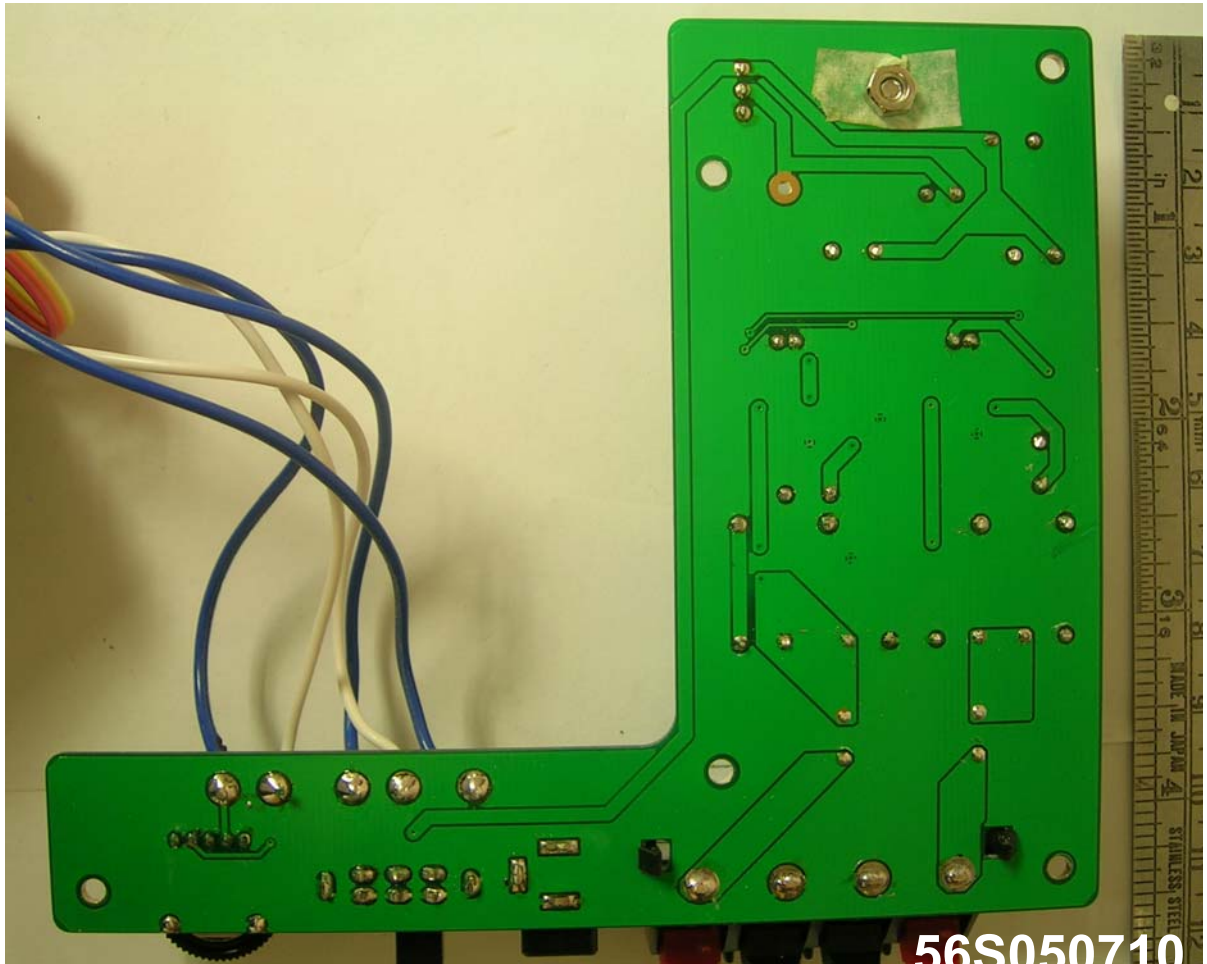
**EUT PHOTOGRAPHS FOR 2.4GHz DIGITAL WIRELESS STEREO AMPLIFIER**



56S050710

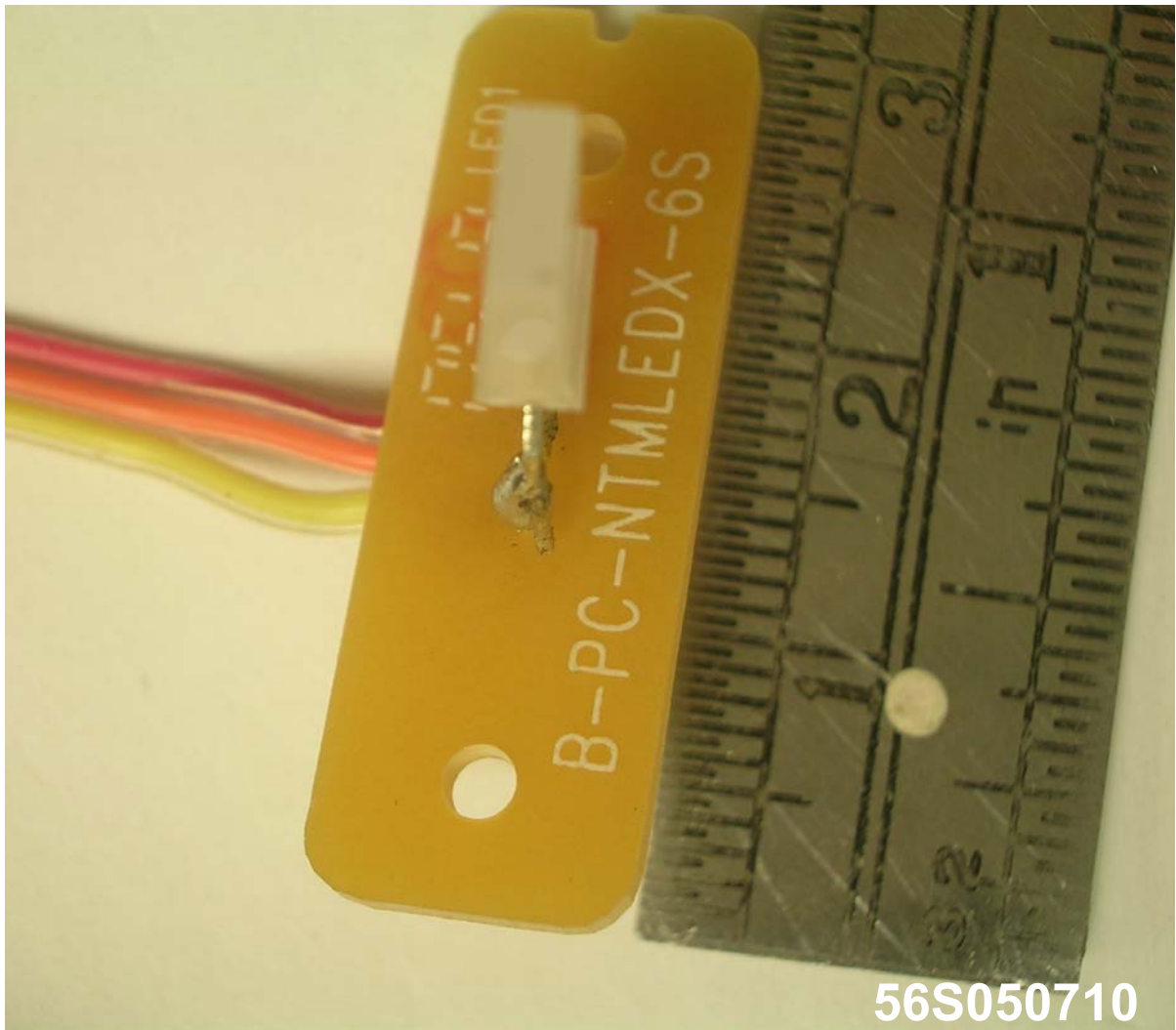
**EUT PCB Component Side (Port & Connector Board)**

**EUT PHOTOGRAPHS FOR 2.4GHz DIGITAL WIRELESS STEREO AMPLIFIER**



**EUT PCB Trace Side (Port & Connector Board)**

**EUT PHOTOGRAPHS FOR 2.4GHz DIGITAL WIRELESS STEREO AMPLIFIER**



**EUT PCB Component Side (LED Board)**

**EUT PHOTOGRAPHS FOR 2.4GHz DIGITAL WIRELESS STEREO AMPLIFIER**

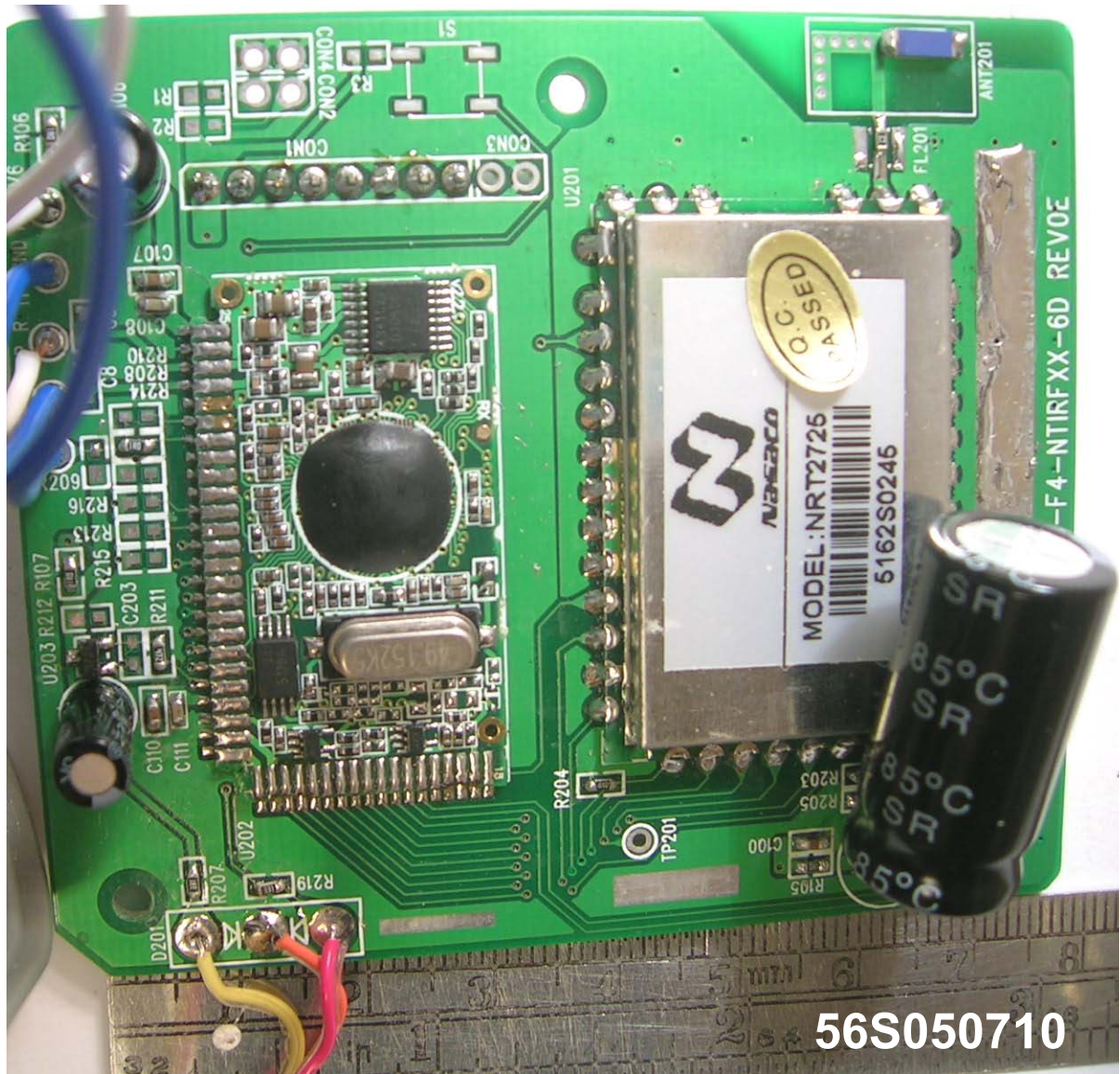


**56S050710**

**EUT PCB Trace Side (LED Board)**



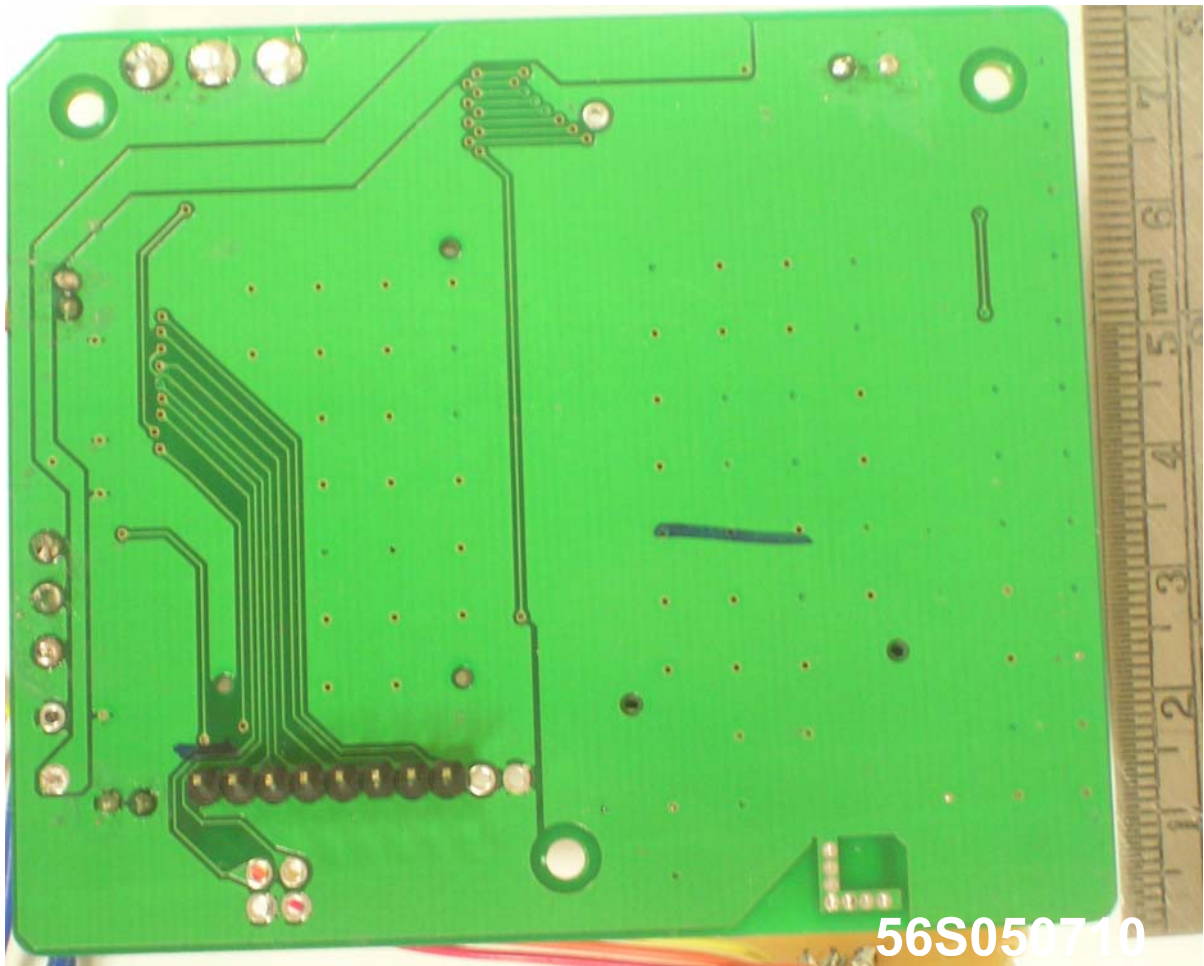
EUT PHOTOGRAPHS FOR 2.4GHz DIGITAL WIRELESS STEREO AMPLIFIER



EUT PCB Component Side (Main RF Board)



**EUT PHOTOGRAPHS FOR 2.4GHz DIGITAL WIRELESS STEREO AMPLIFIER**

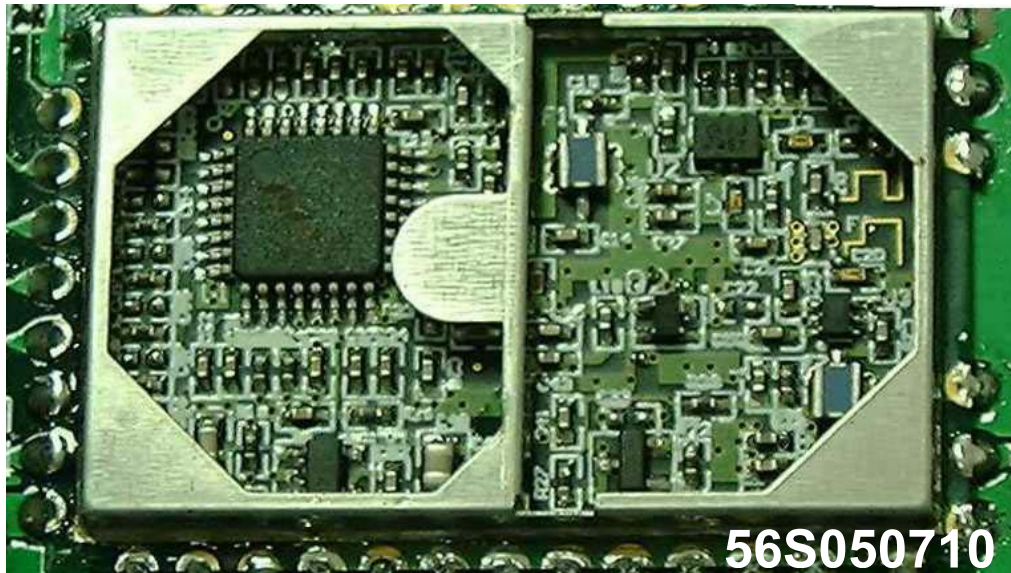


**EUT PCB Trace Side (Main RF Board)**

**EUT PHOTOGRAPHS FOR 2.4GHz DIGITAL WIRELESS STEREO AMPLIFIER**



RF Module Circuit with RF Shield



RF Module Circuit with RF Shield Removed