

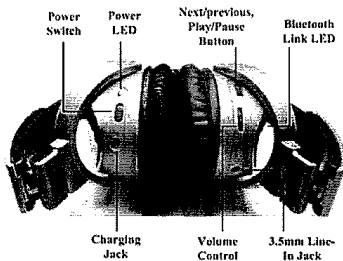
www.tuv.com

1.3 User Manual

Bluetooth Headphone User Guide



1 About the NTE8100



2 Charging Your Headphone

1. Plug the power adapter into you headphone
2. Plug the other end of the charger into an electrical outlet.
3. Power LEDs light up in green during charaing, when the green off are indicated the battery are fully charged.
(Warning: The Headphone is not working during Charging Mode.)

For safety: "Dispose of batteries according to local regulations. Do not dispose as household waste."

3 Installation

- 1 Plug the bundled Bluetooth USB Audio Adapter to a free USB port on your computer.

Note:

1. The bundled Bluetooth USB Audio Adapter supports Windows 98, ME, 2000, XP and Mac OS.
2. With the bundled Bluetooth USB Audio Adapter, this headset is designed to work out of box without configuration. If you are using other Bluetooth audio adapter, you may need to manually configure the Bluetooth Stereo Headset. Refer to your Bluetooth audio adapter's user manual for details regarding the driver installation and Bluetooth configuration...



- 2 Turn on your Bluetooth Stereo Headset and wear it. You can now enjoy music from your computer.

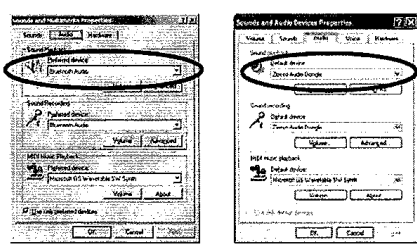


For the volume control, upon hold continuously to increase/decrease the volume. Push the joy dial down to mute.

4 Troubleshooting

If you cannot hear music played from your computer, please do the followings.

1. Make sure the power LED on the headphone glows. If not, replace the battery with new ones.
2. Make sure the Link LED is blinking. If not, it means your Bluetooth Stereo Headset is NOT connected to the Bluetooth audio adapter as it should be. In this case, unplug your Bluetooth audio adapter. Power off your Bluetooth Stereo Headset. Repeat the installation steps 1 2.



3. For Windows 2000: Go to Start → Control Panel → Sounds and Multimedia → Audio. Make sure that Bluetooth Audio is selected for the preferred device of Sound Playback.

For Windows XP: Go to Start → Control Panel → Sound, Speech, and Audio Devices → Sound and Audio Devices. Make sure that Zeevo Audio Dongle is selected for the Default device of Sound playback.

Bluetooth Headphone *User Guide*



Safety and General Information

This device complies with Part 15 of the FCC Rules. Operation is subject to the following two conditions: (1) this device may not cause harmful interference, and (2) this device must accept any interference received, including interference that may cause undesired operation.

Changes of modifications not expressly approved by the party responsible for compliance could void the user's authority to operate the equipment.