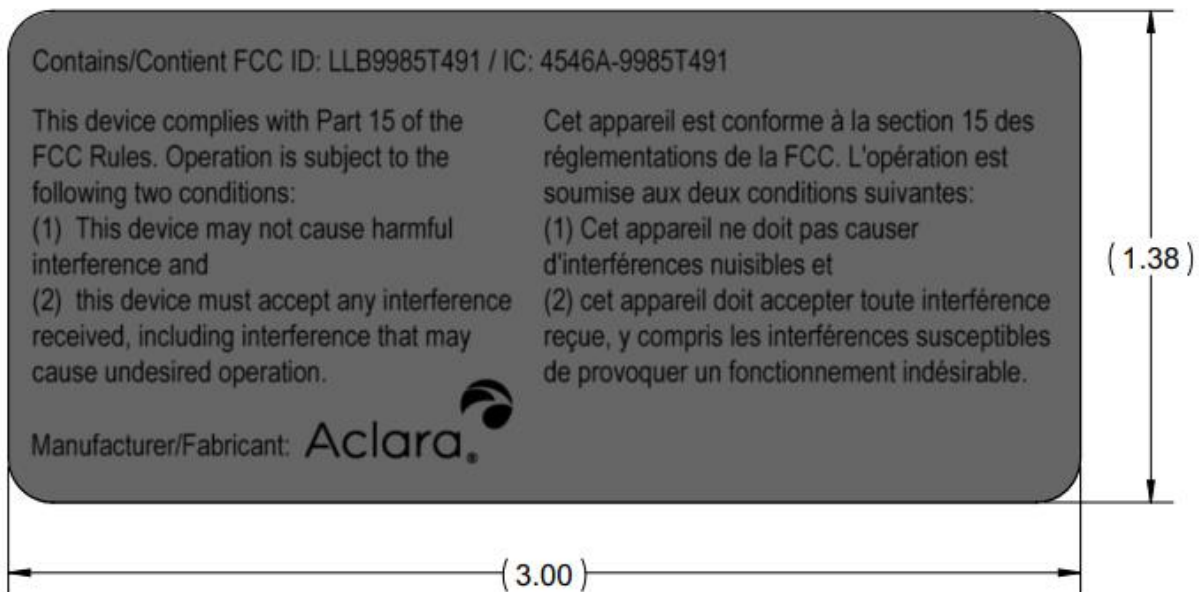


## ID Label/Location

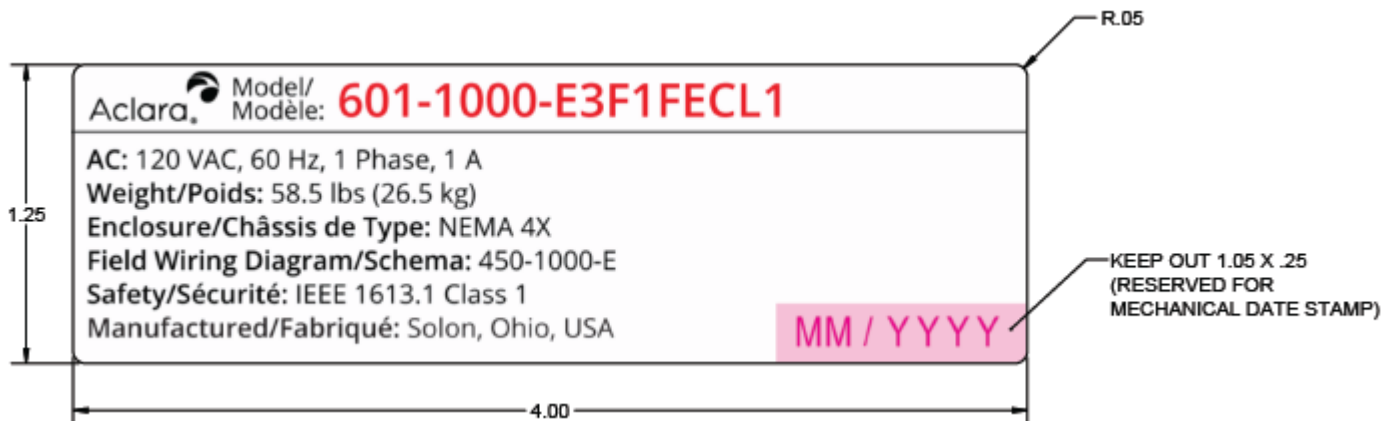
### Drawing/Photograph of Label



#### NOTES:

1. MATERIAL: ACLARA P/N 091-0094
2. FONT: ARIAL NARROW, 6 PT MIN
3. USE ELECTRONIC FILE, ADOBE ILLUSTRATOR (.AI) TO REPRODUCE ARTWORK.
4. ALL PRINTING IN BLACK.

### Drawing of Model label



#### NOTES:

1. REFER TO TABLE FOR VARIABLE TEXT (SHOWN IN RED).
2. MATERIAL/PROCESS: METALPHOTO, .020 THICK ALUMINUM, MATTE FINISH.
3. ADHESIVE: DOUBLE SIDED PSA, 3M 468MP
4. FONT: OPEN SANS
5. USE ELECTRONIC FILE, ADOBE ILLUSTRATOR (.AI) TO REPRODUCE ARTWORK.
6. ALL PRINTING IN BLACK.
7. ALL MATERIALS AND PROCESSES MUST COMPLY WITH THE FOLLOWING REQUIREMENTS:
  - EU DIRECTIVE 2011/65/EU (ROHS2) AND AS AMENDED BY 2015/863/EU (ROHS2A)

Drawing showing placement of FCC/ISED label:

