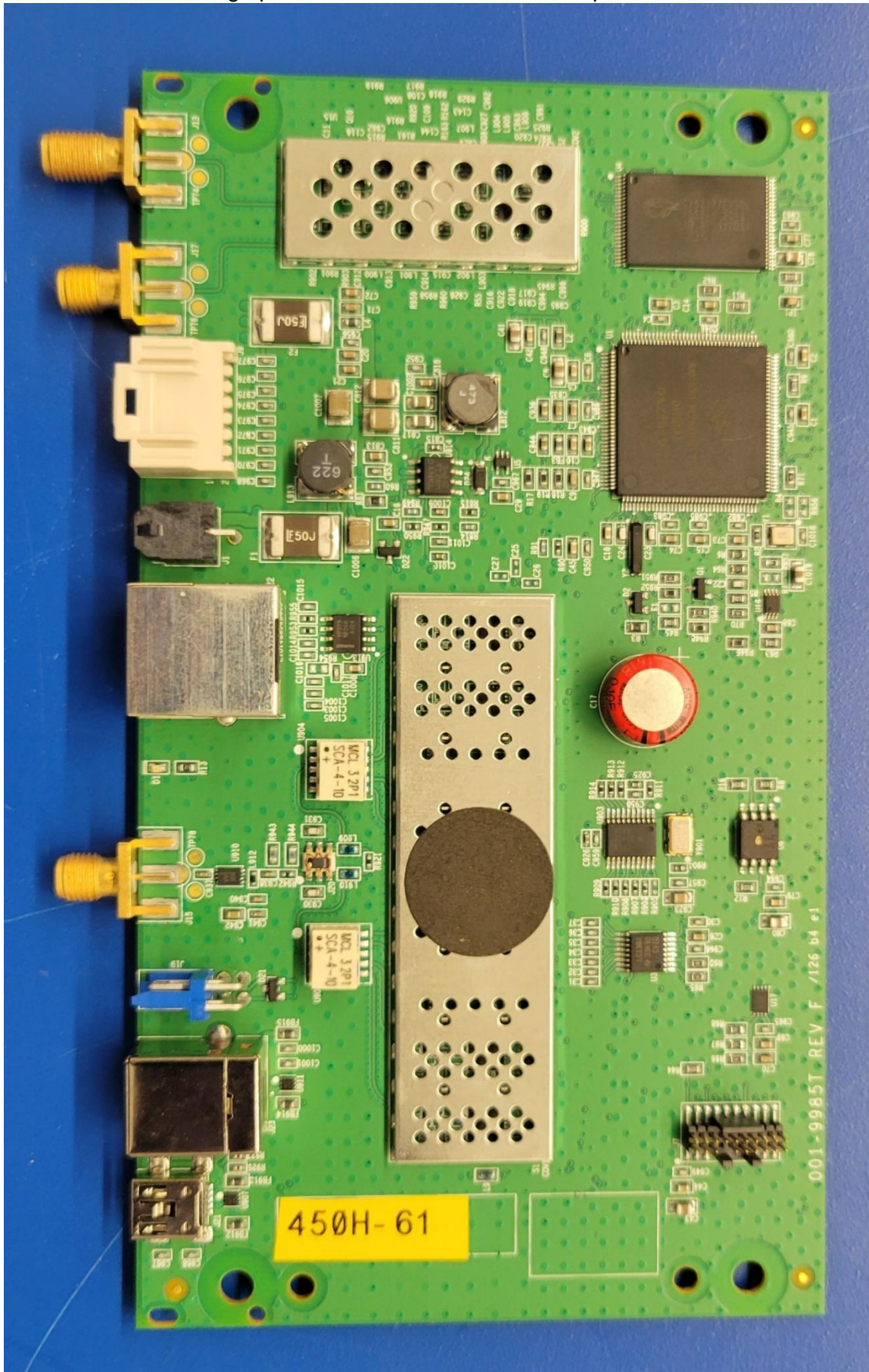
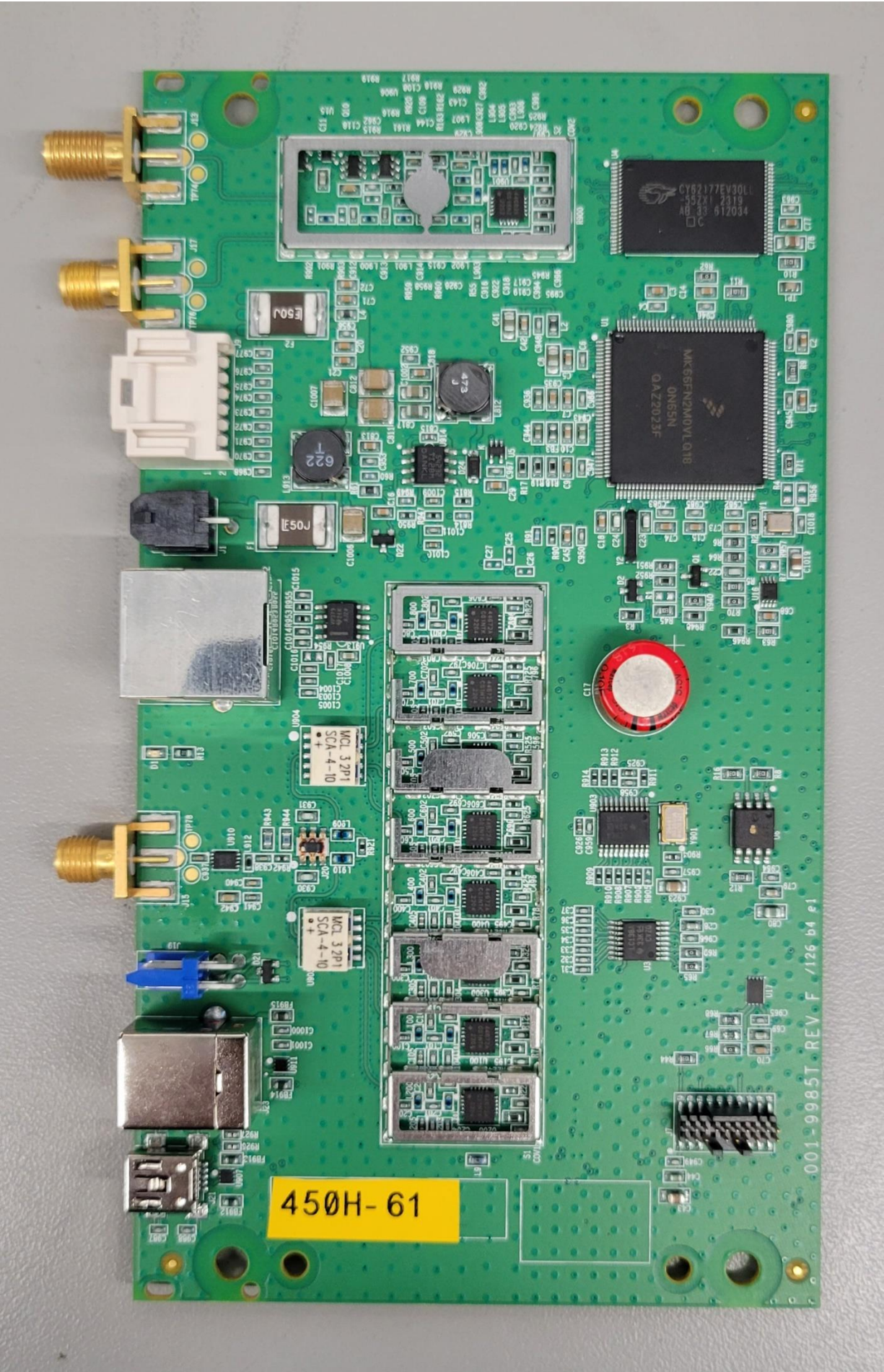


Internal EUT Photographs

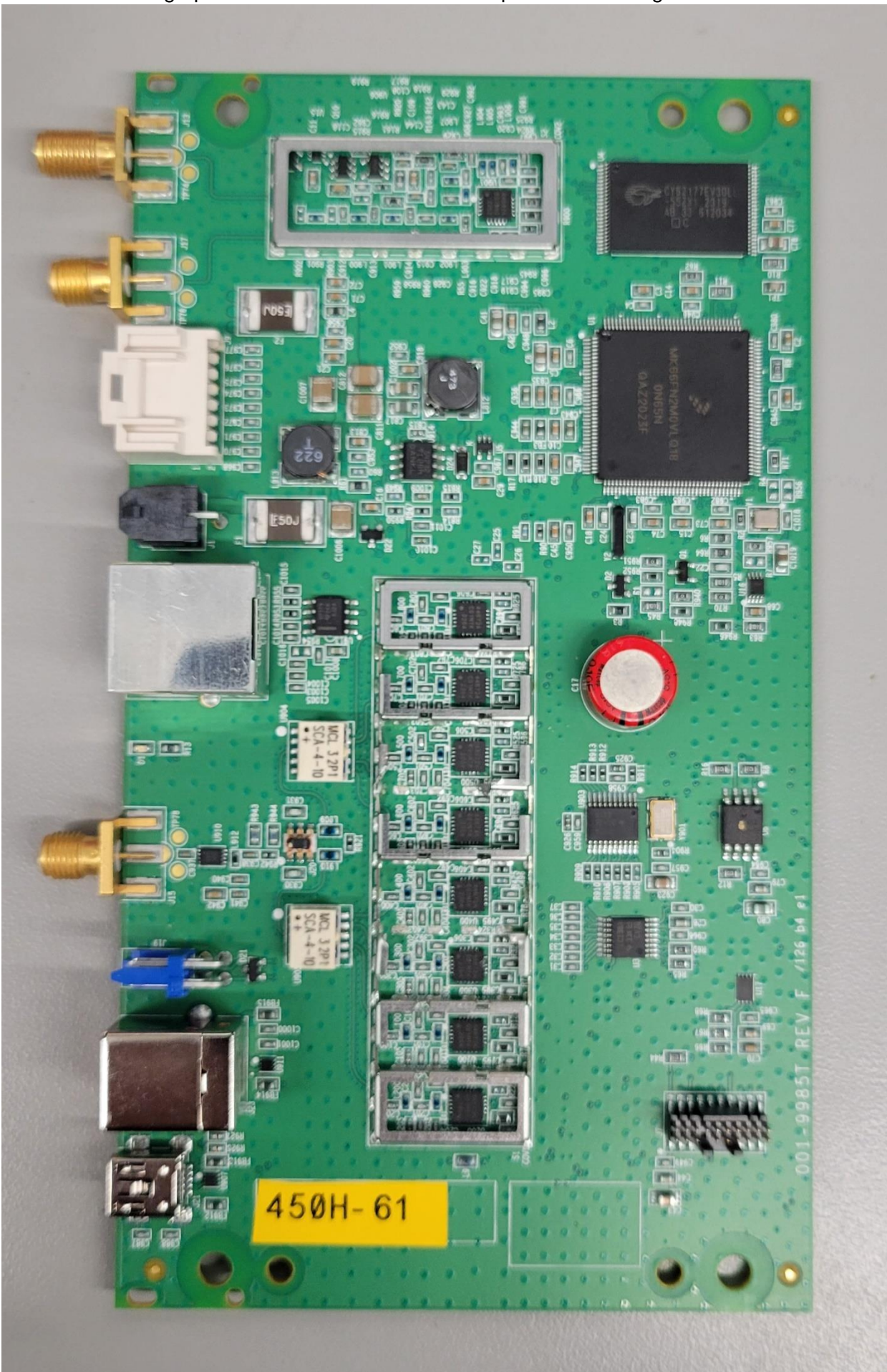
Photograph of 450 MHz Radio Board: Component Side



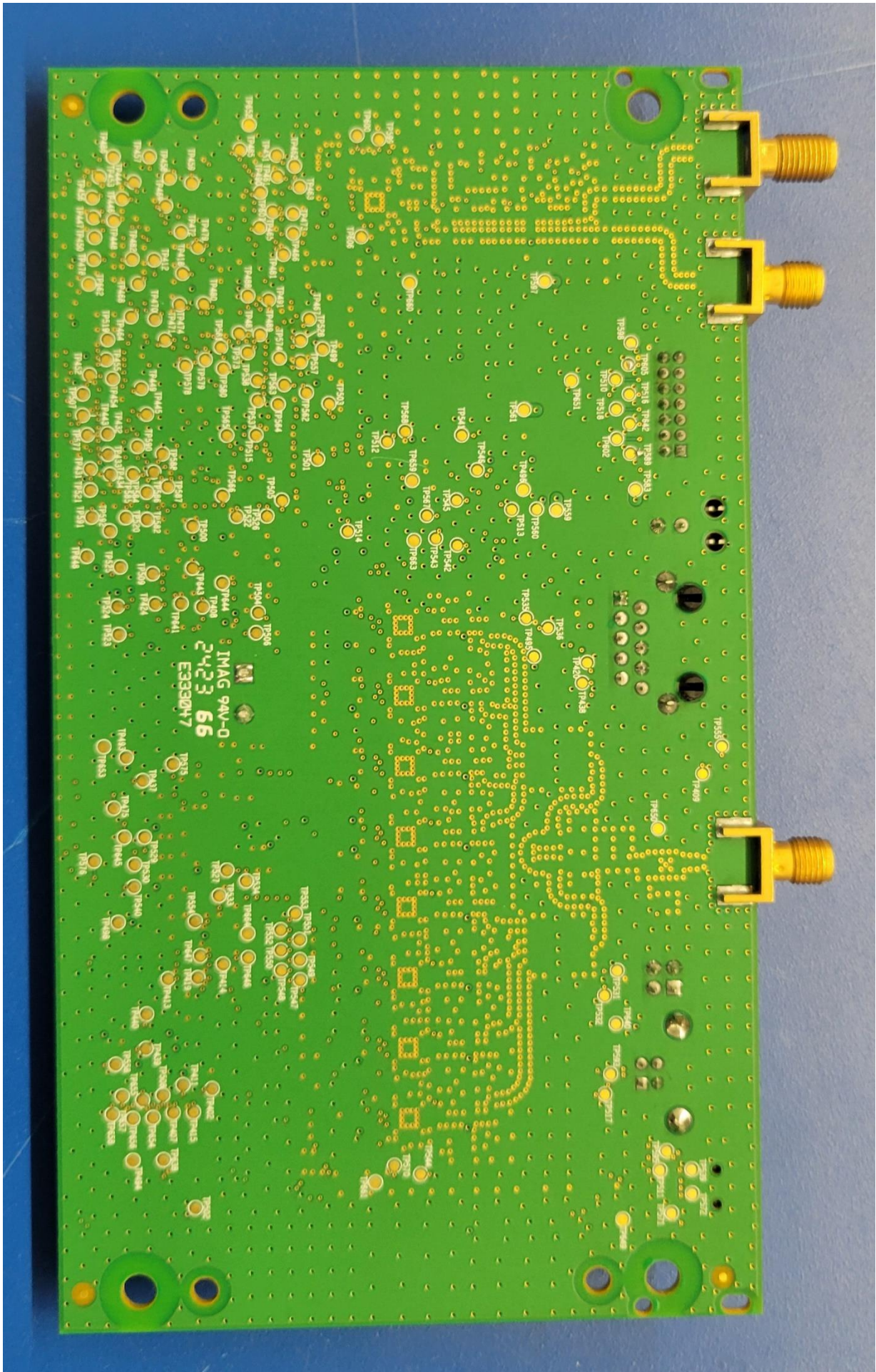
Photograph of 450 MHz radio Board: Component Side: Shields Removed



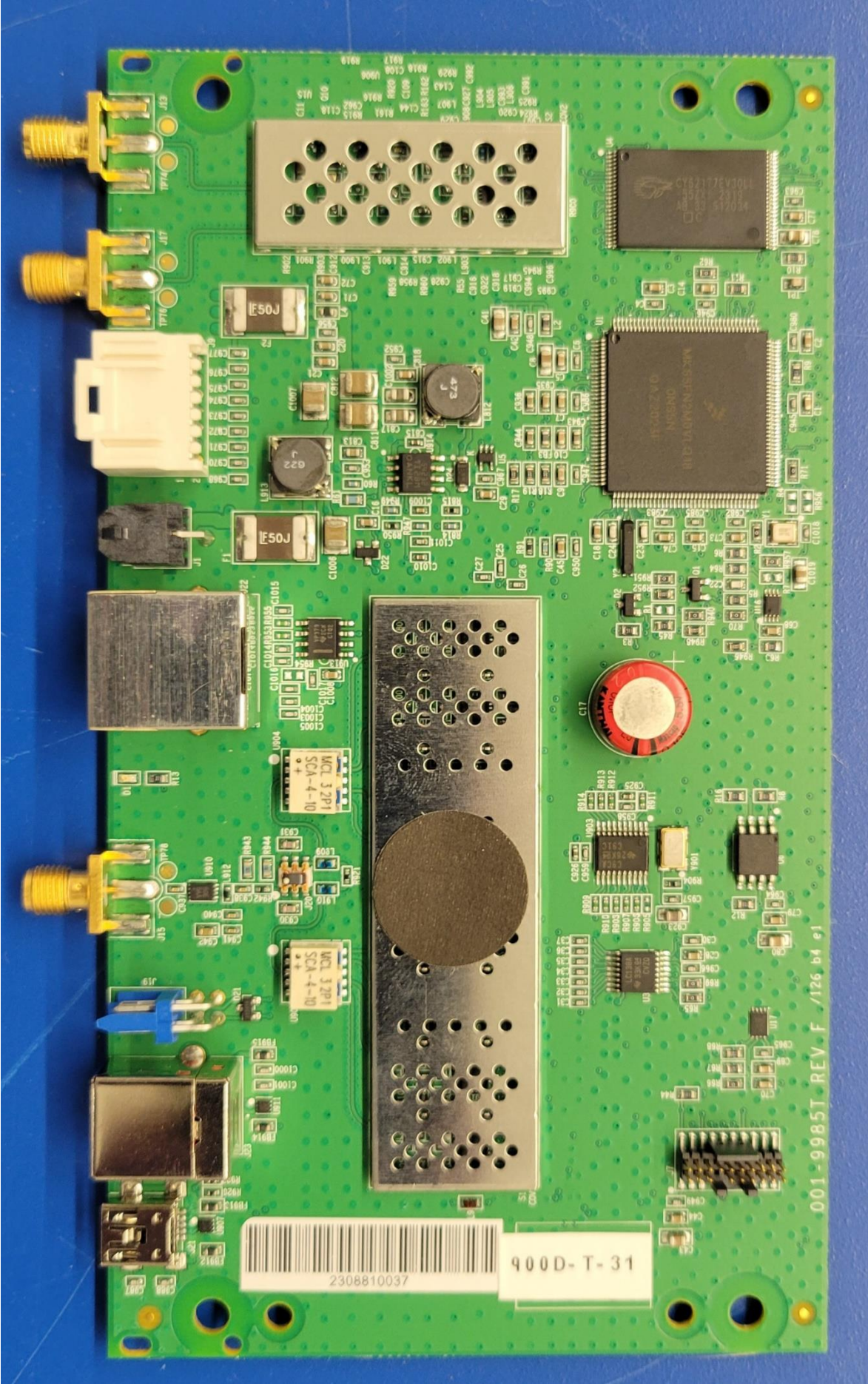
Photograph of 450 MHz radio Board: Component Side: Cages Removed



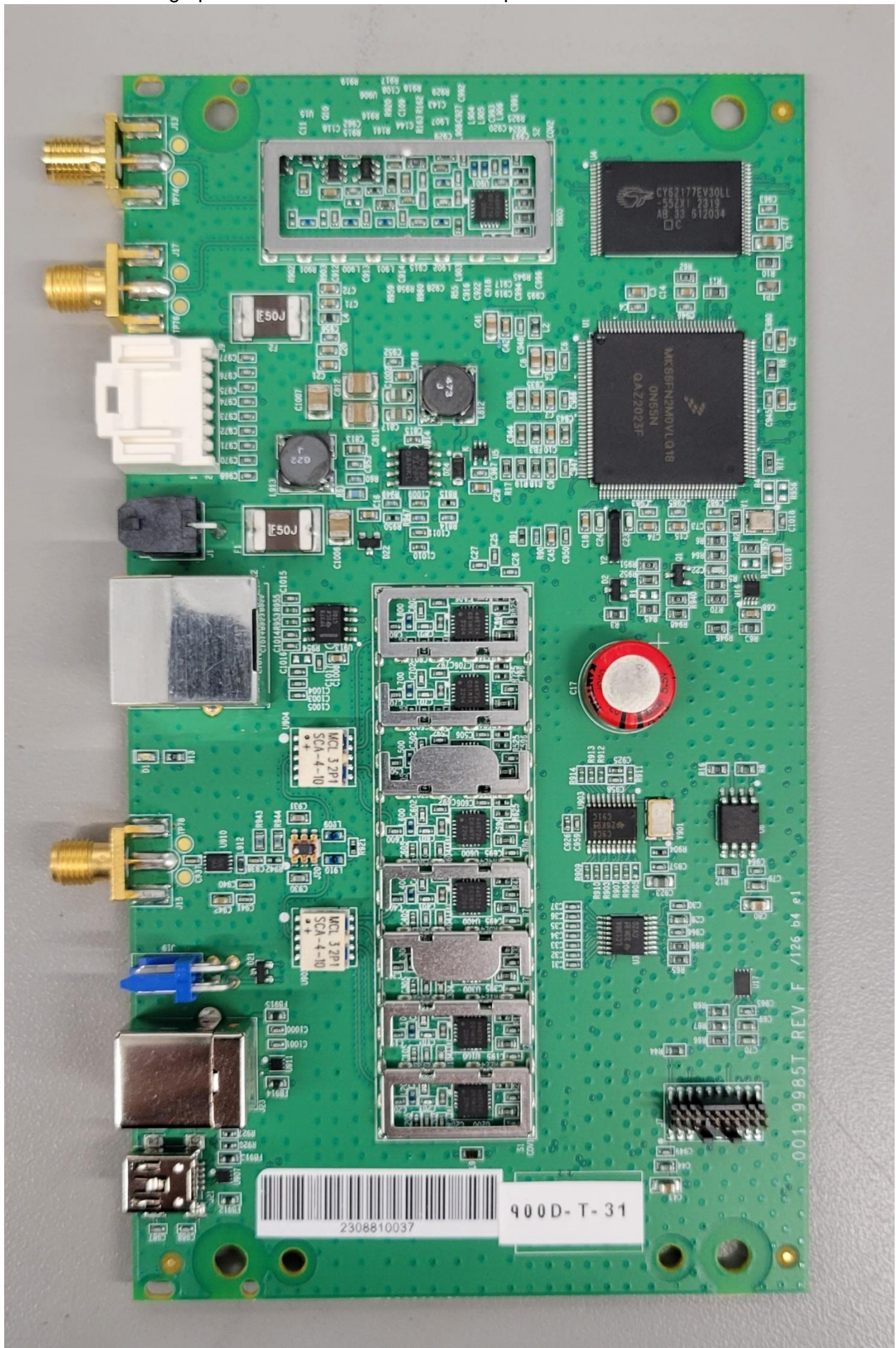
450 MHz Radio Board: Back



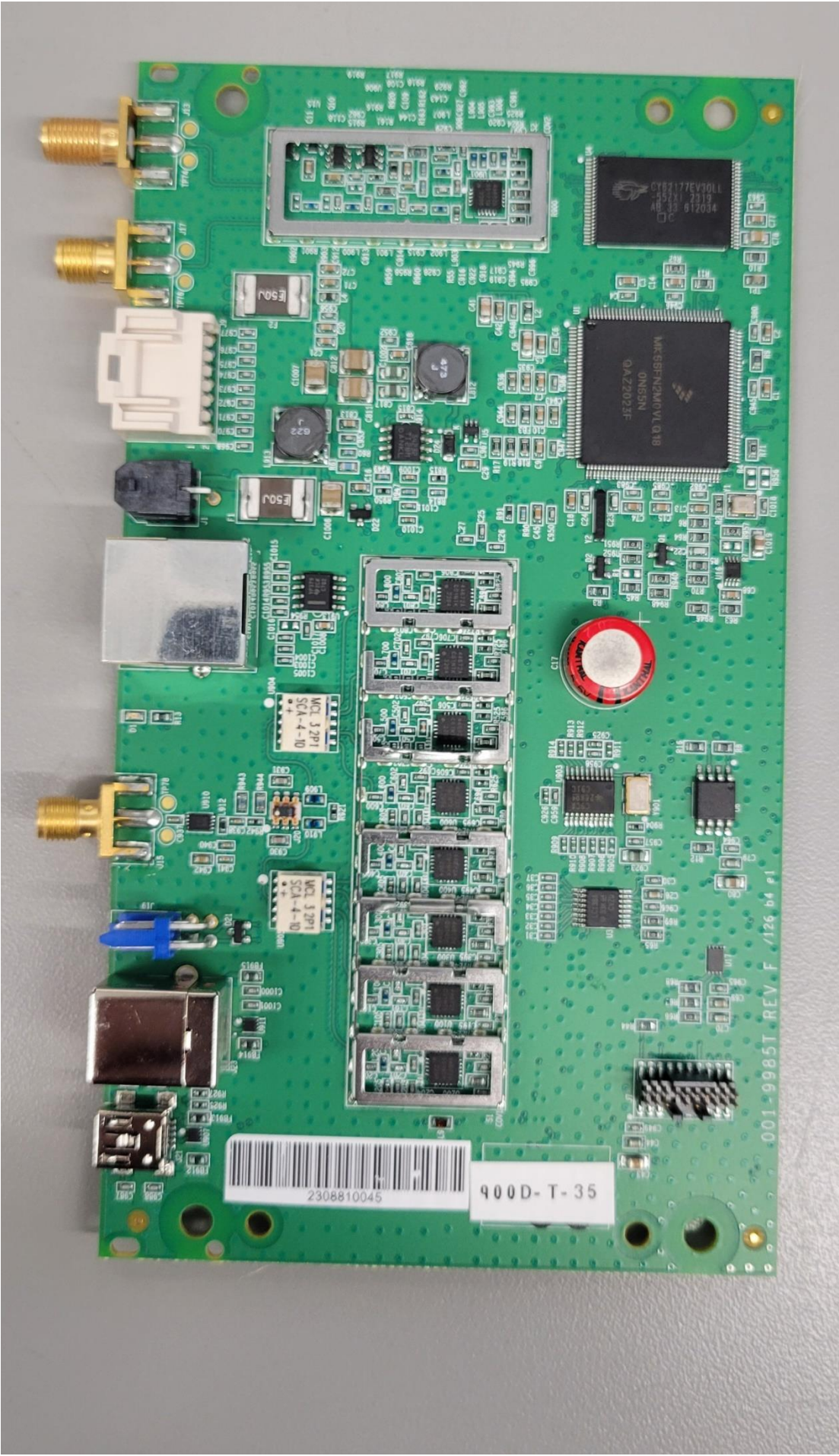
900 MHz Radio Board: Component Side



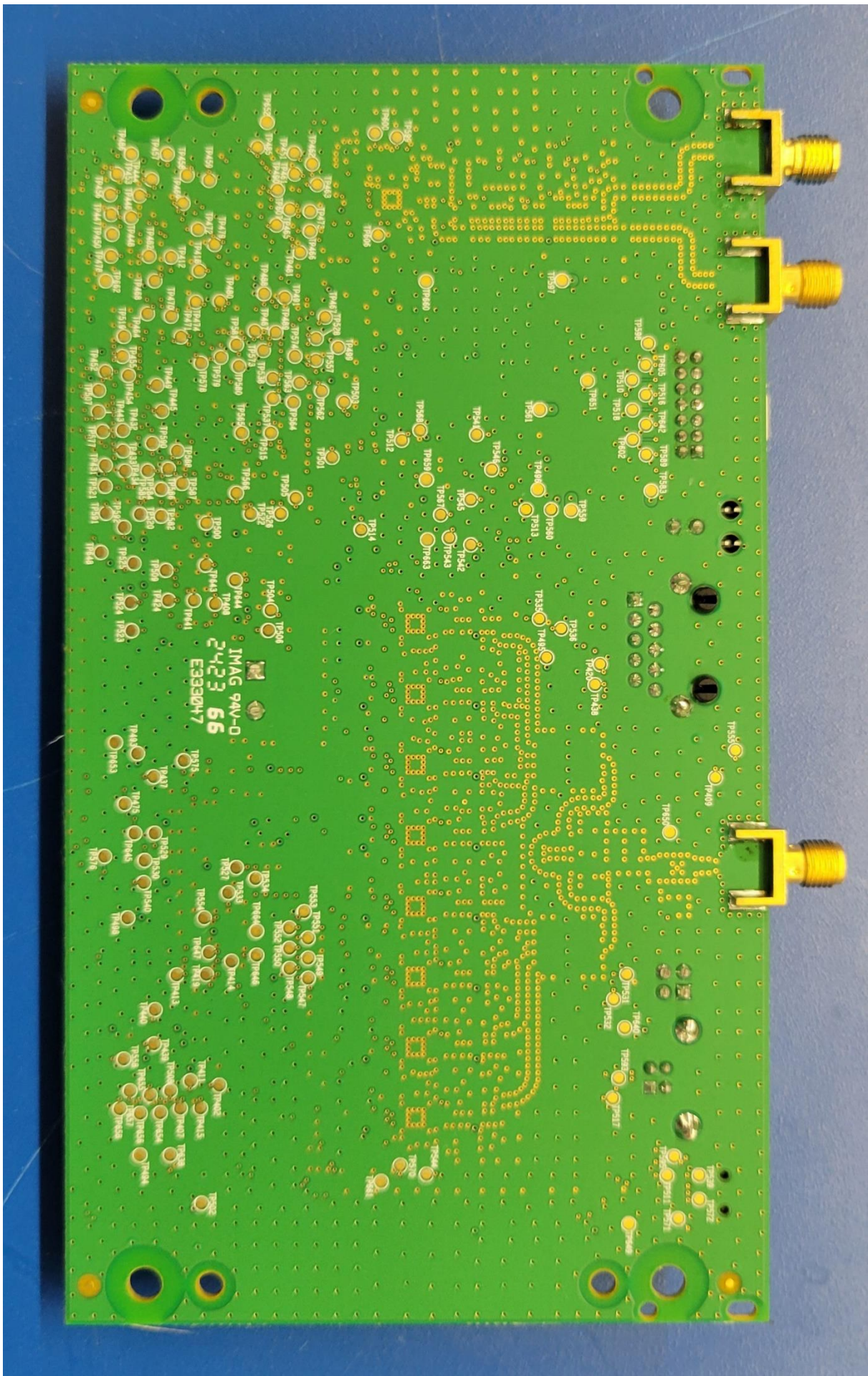
Photograph of 900 MHz Radio Board: Component Side: Shields Removed



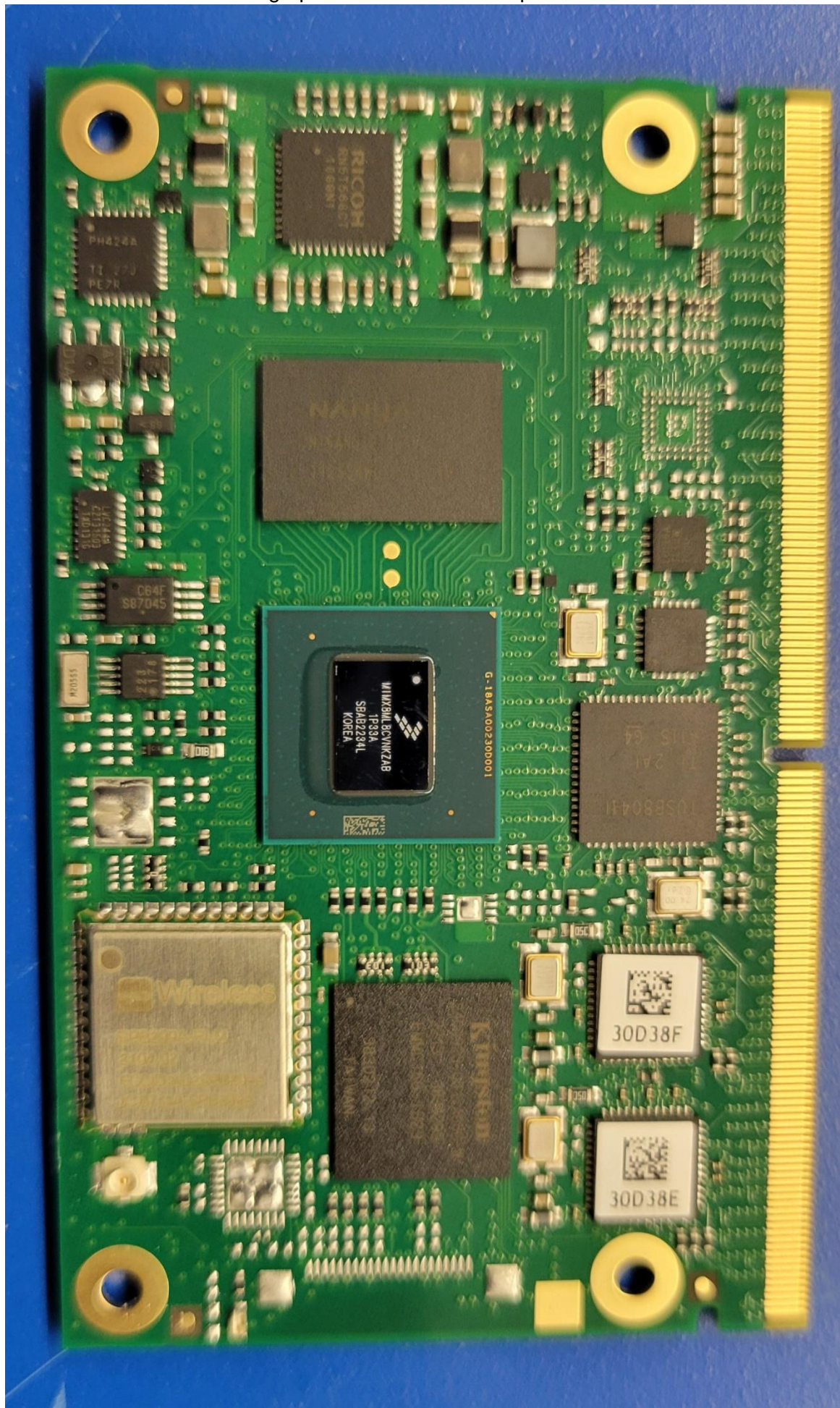
Photograph of 900 MHz Radio Board: Component Side: Cages Removed



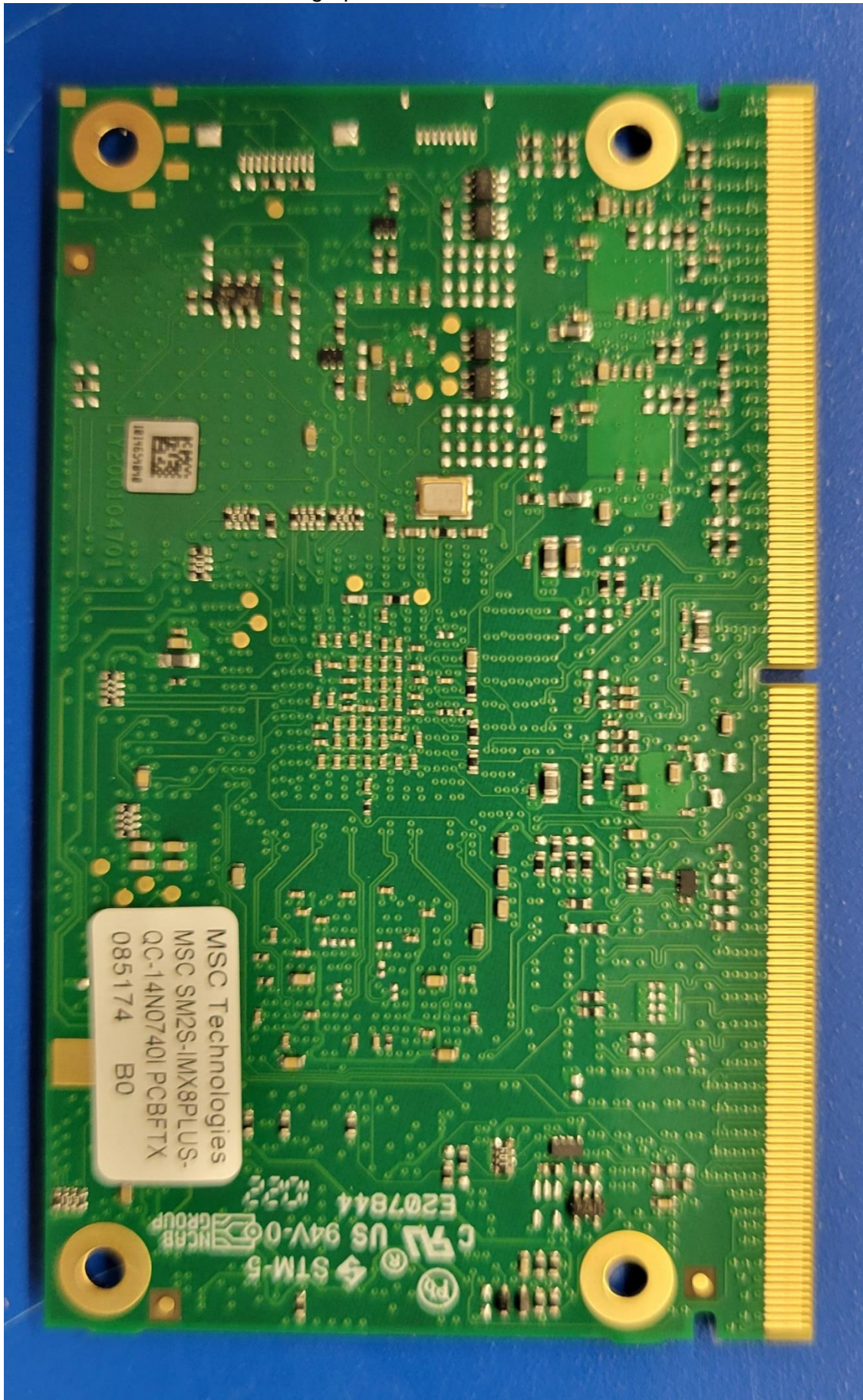
900 MHz Radio Board: Back



Photograph of SOM Board: Component Side



Photograph of SOM Board: Foil Side



Photograph of Assembly: Front cover removed.

