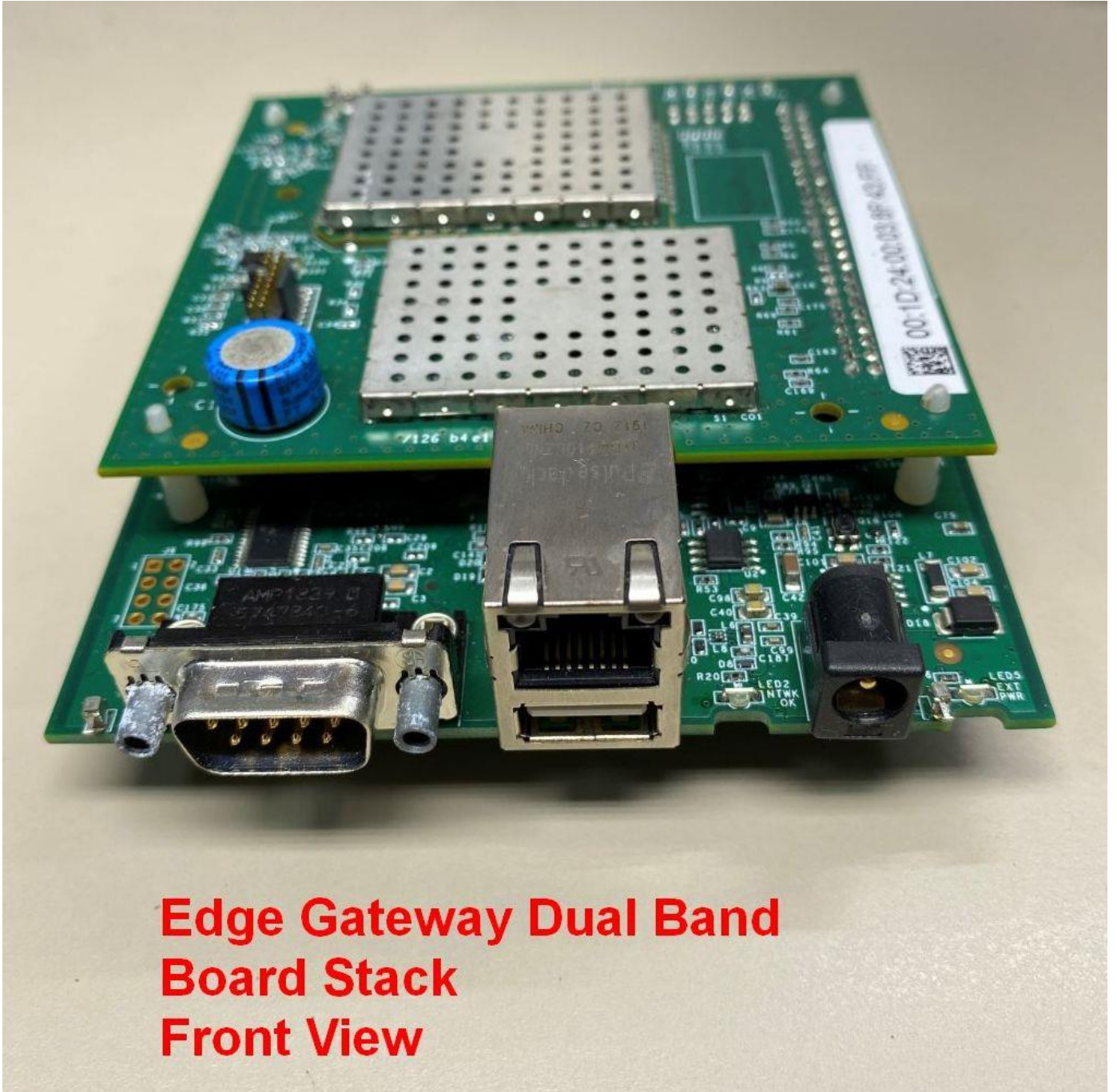


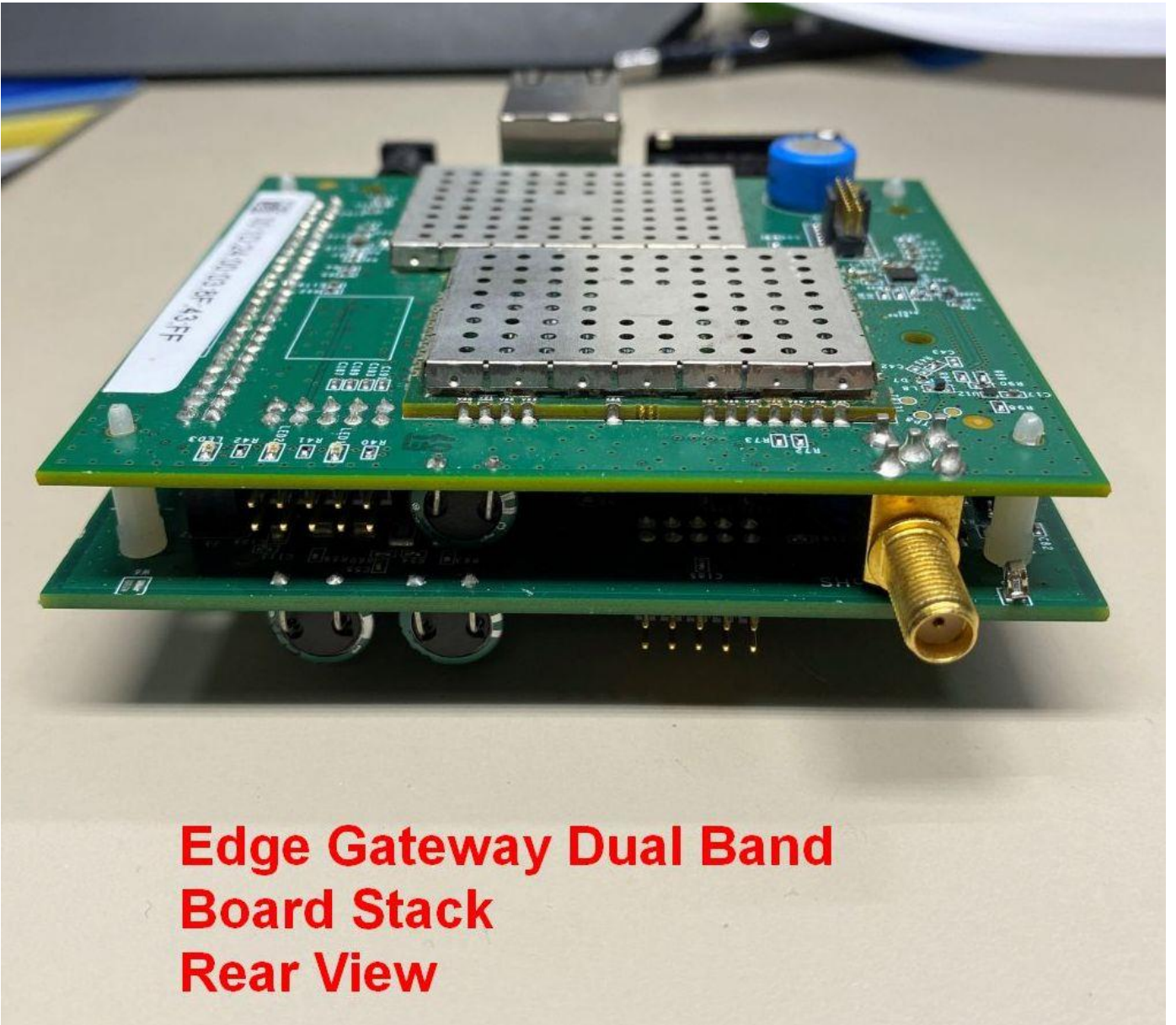
Internal EUT Photographs

PCB installation  
Front



**Edge Gateway Dual Band  
Board Stack  
Front View**

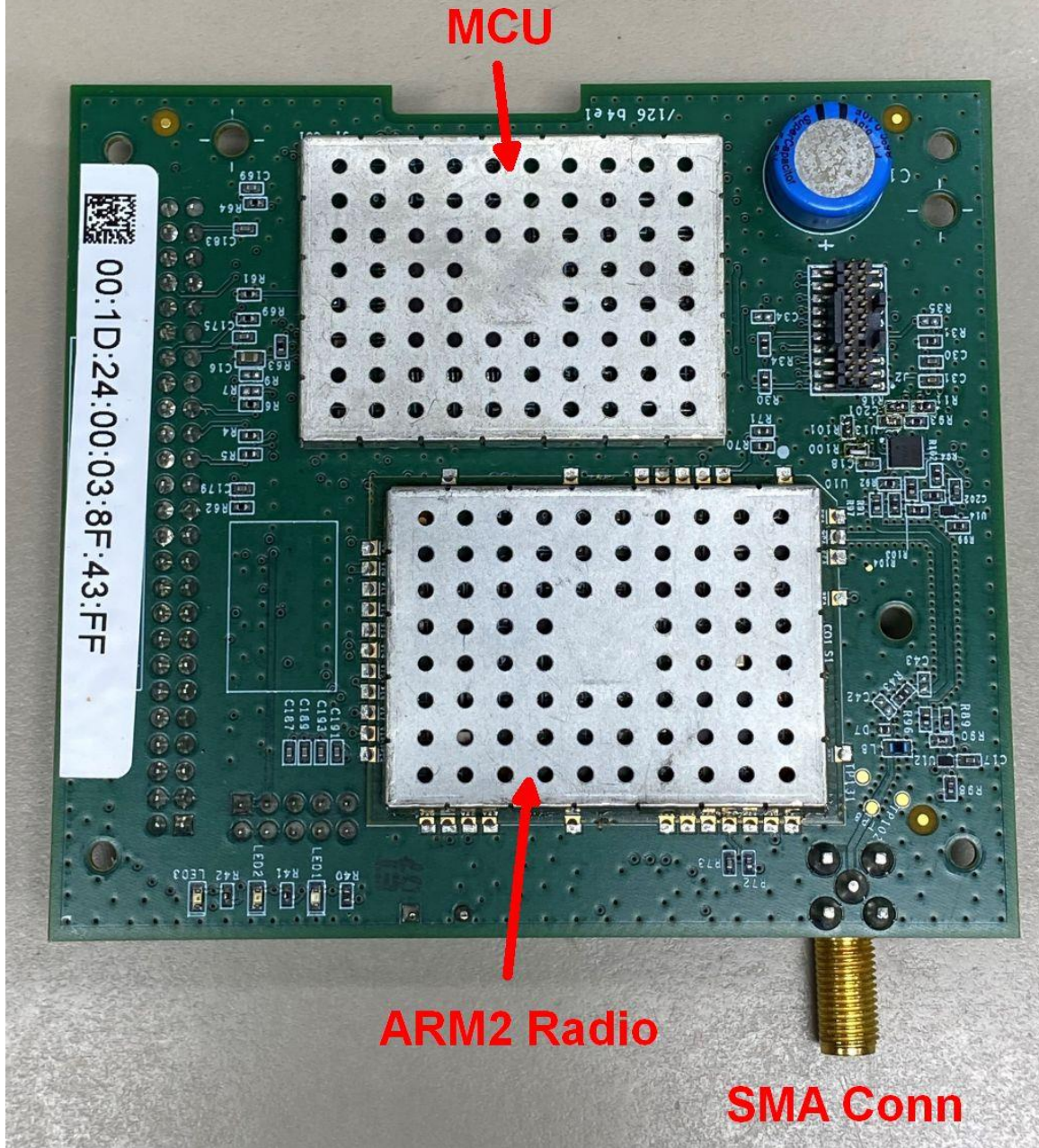
Back



**Edge Gateway Dual Band  
Board Stack  
Rear View**



# Edge Gateway Dual Band NIC Top View



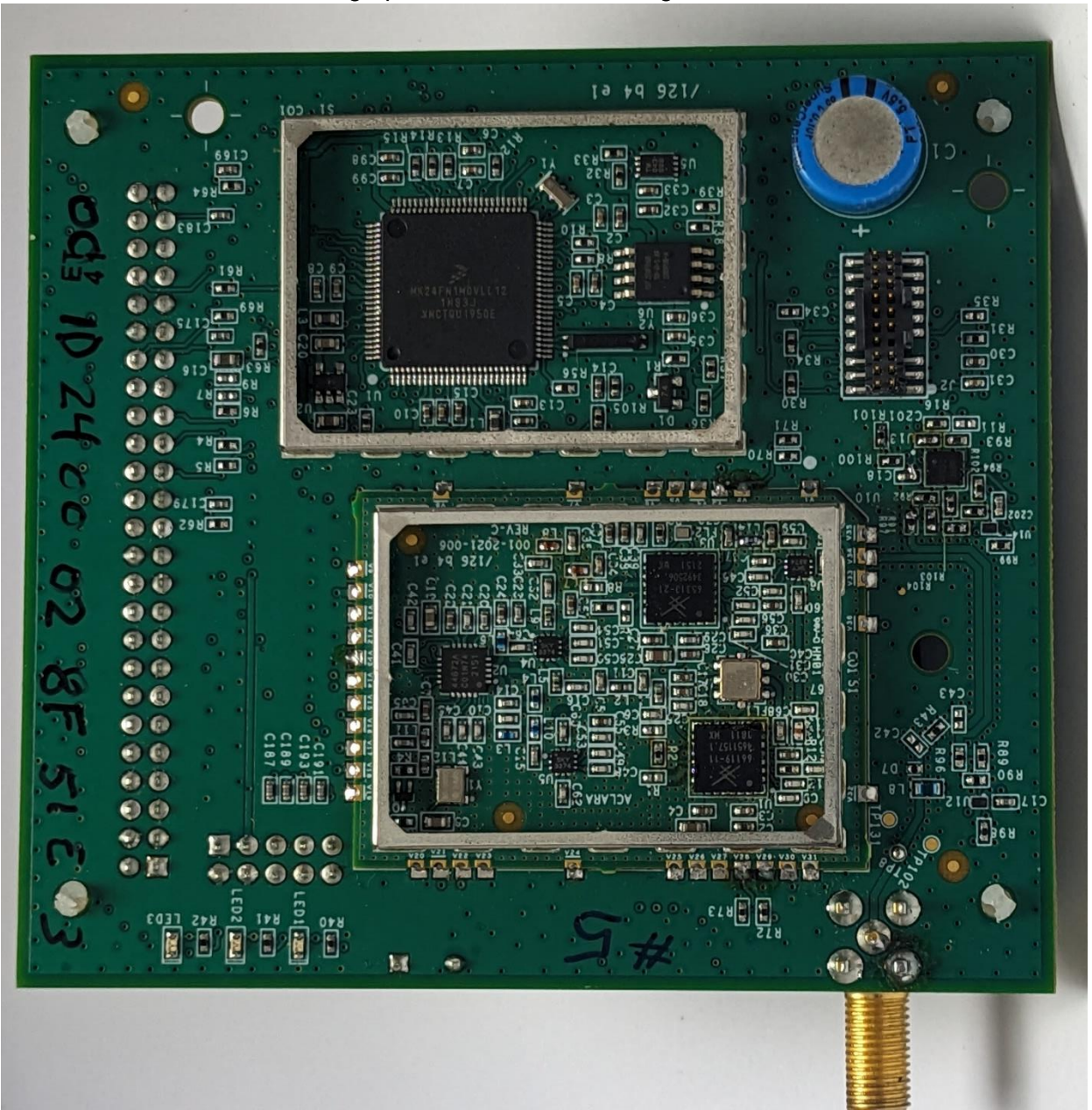
MCU

ARM2 Radio

SMA Conn

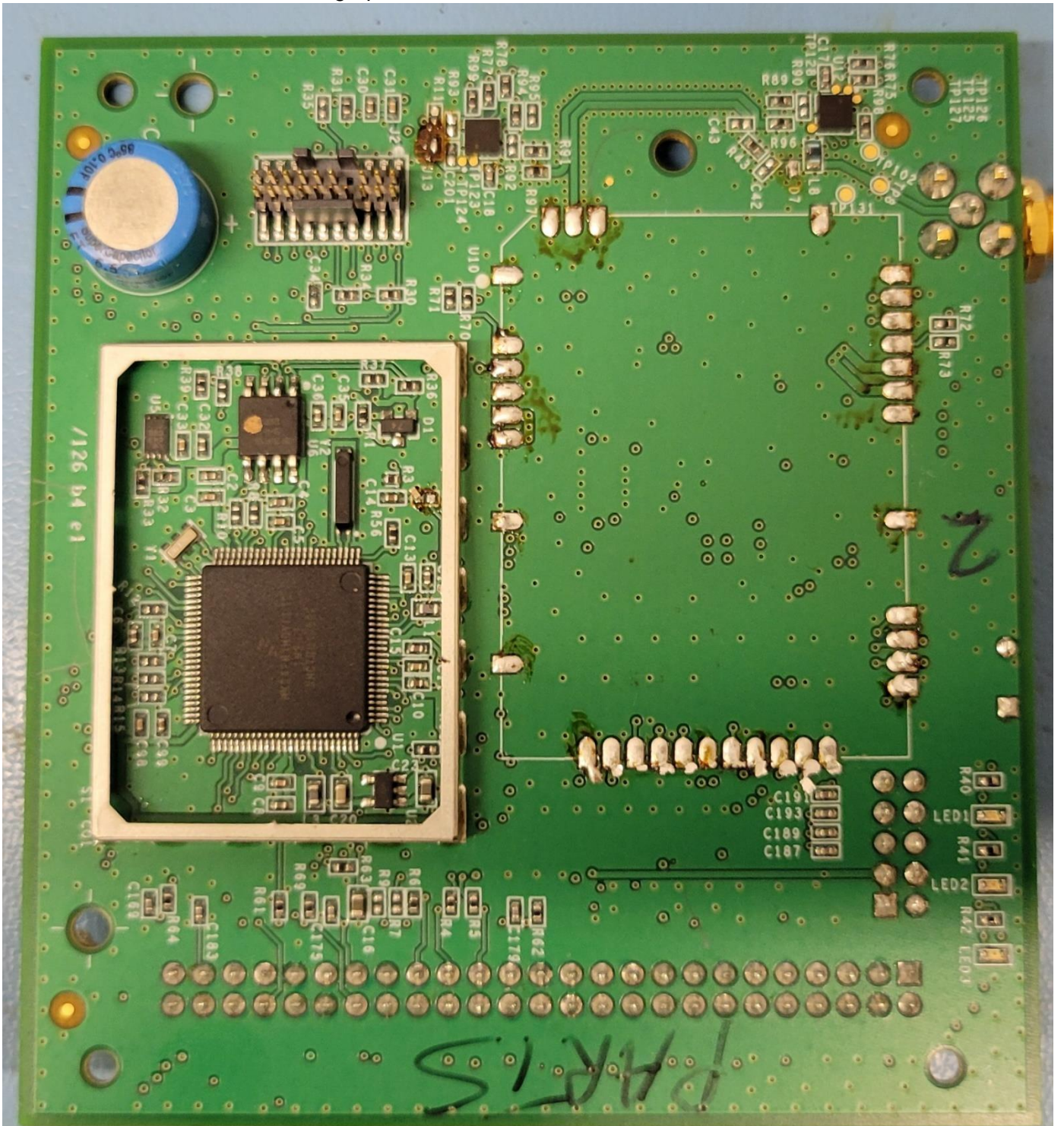


Photograph of NIC PC Board; Cages removed



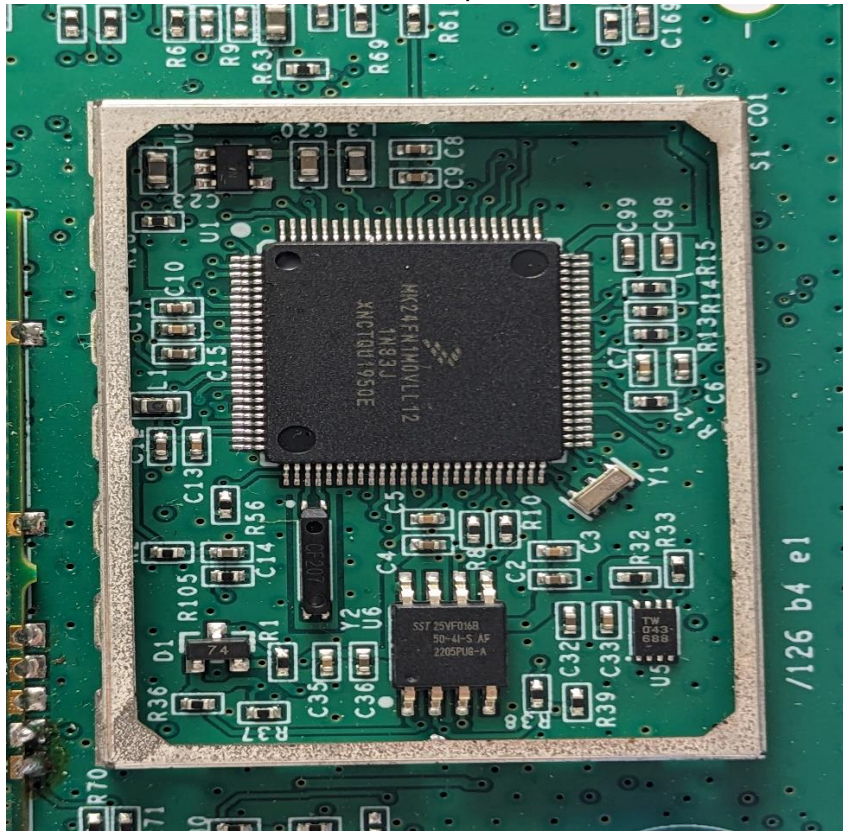


Photograph of NIC PC Board ARM2 radio removed

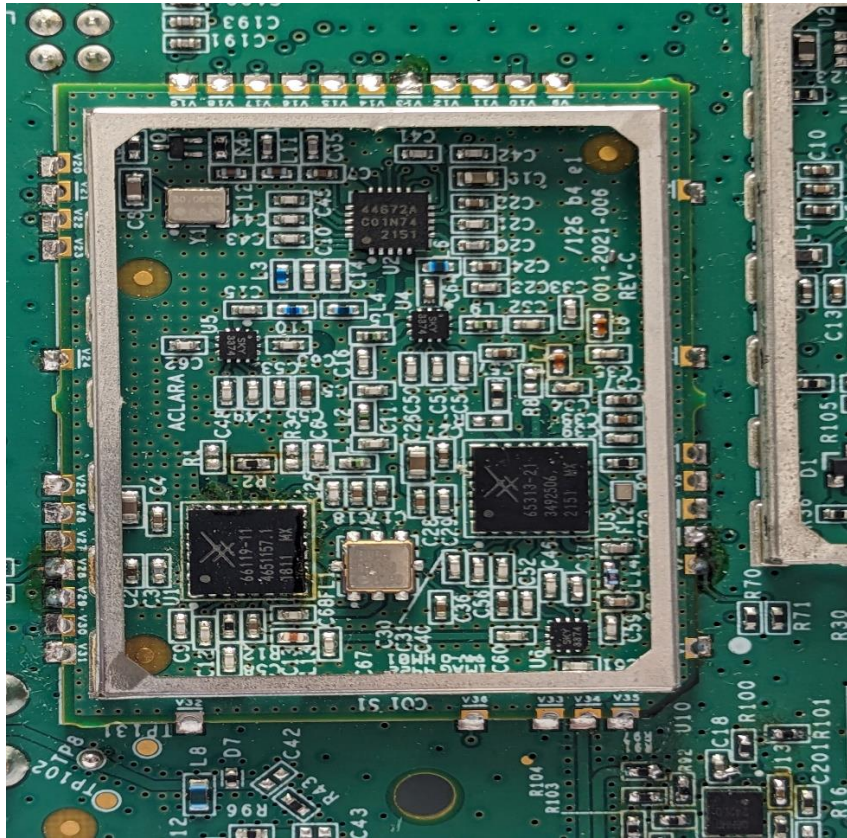




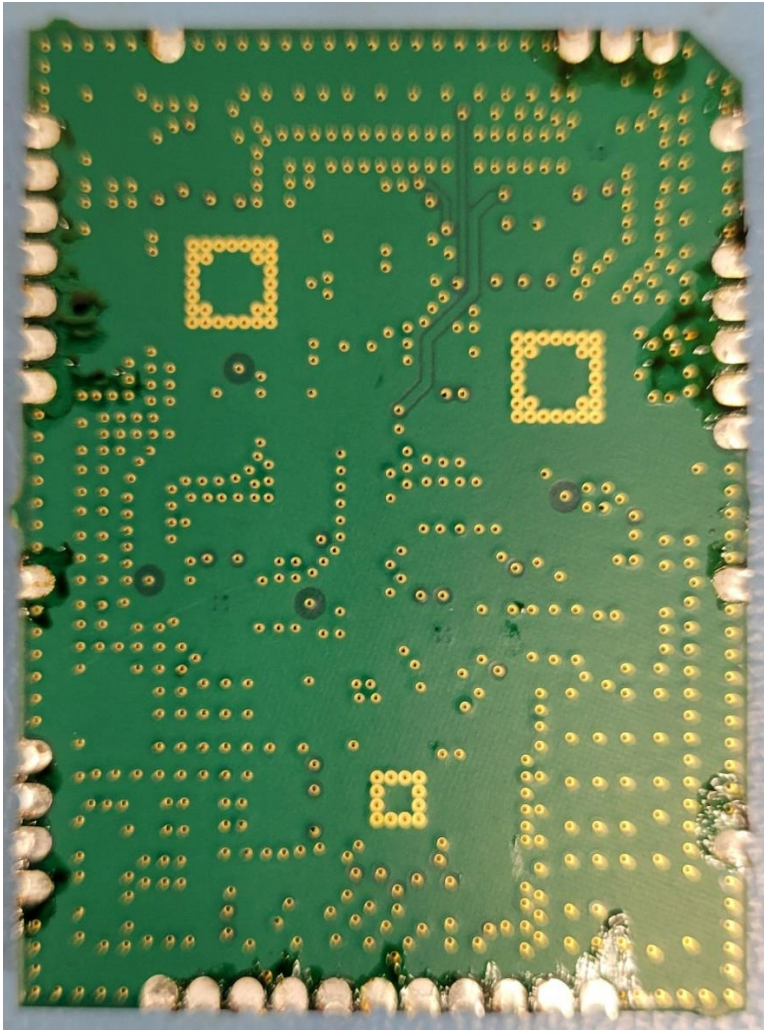
MCU Board: Component Side



ARM2 Radio: Component Side

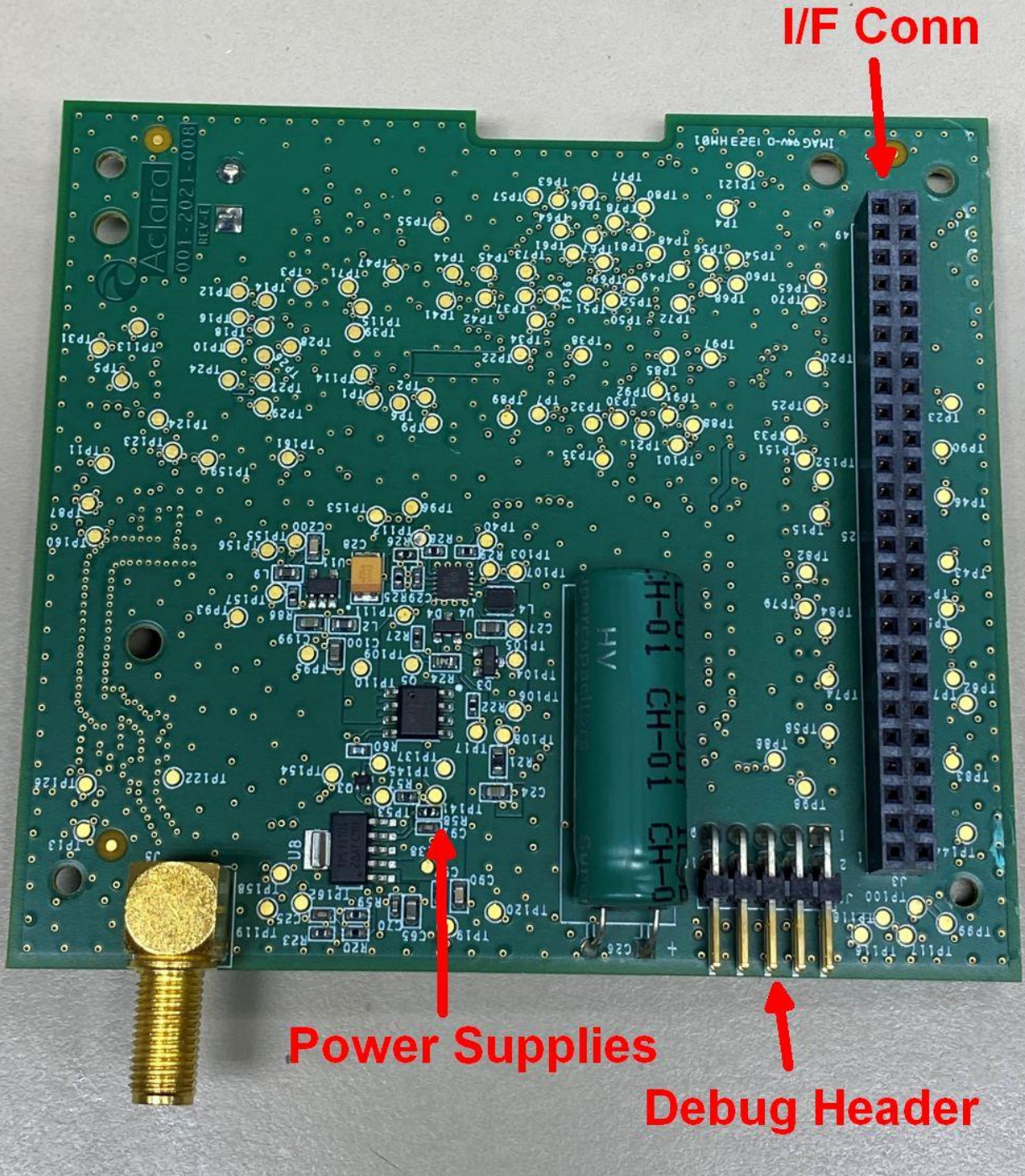


Bottom of ARM2 Radio





# Edge Gateway Dual Band NIC Bottom View





**Edge Gateway Host Board  
Top View**

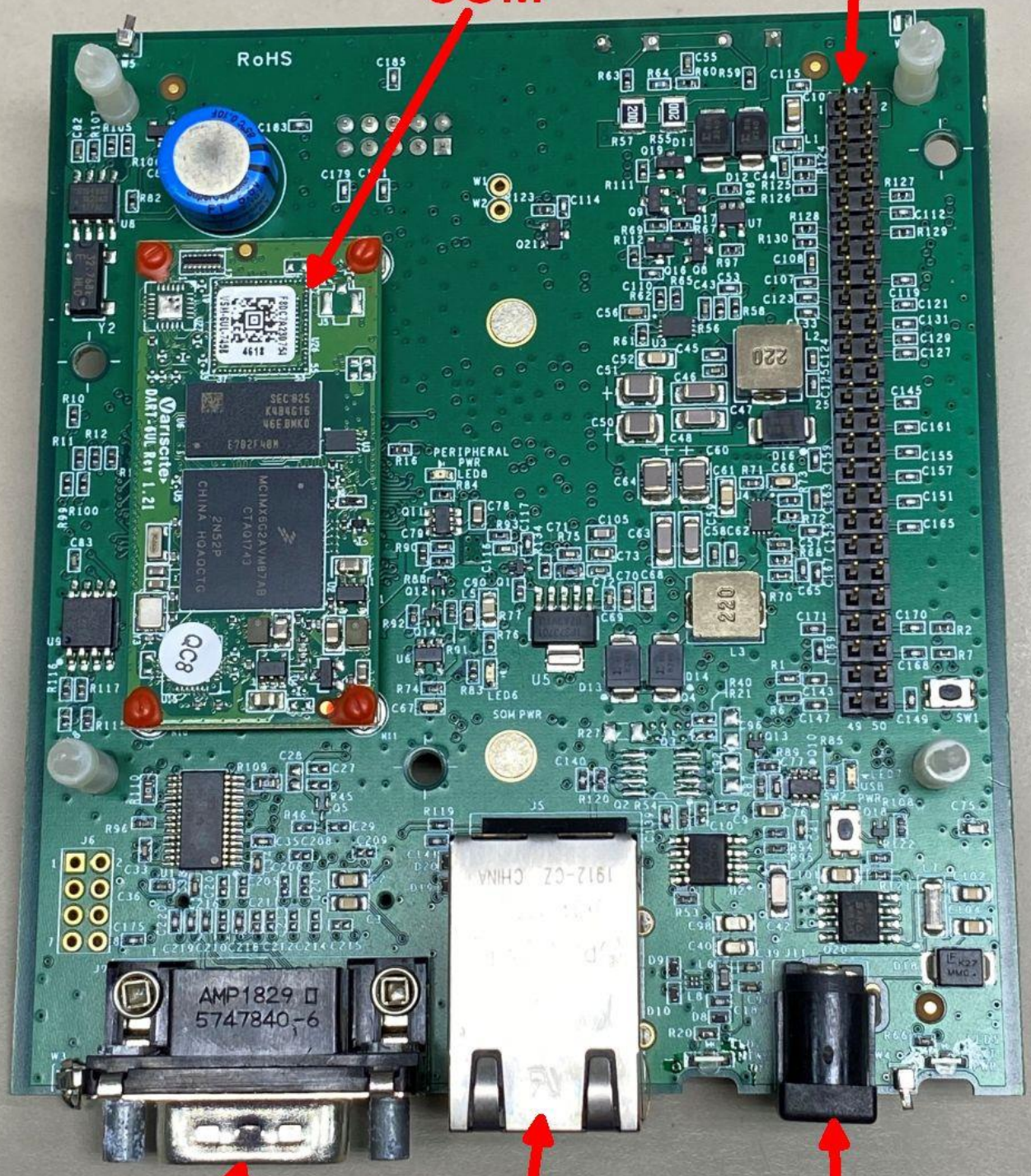
**I/F Conn**

**SOM**

**RS-232**

**ETH/USB**

**PWR IN**





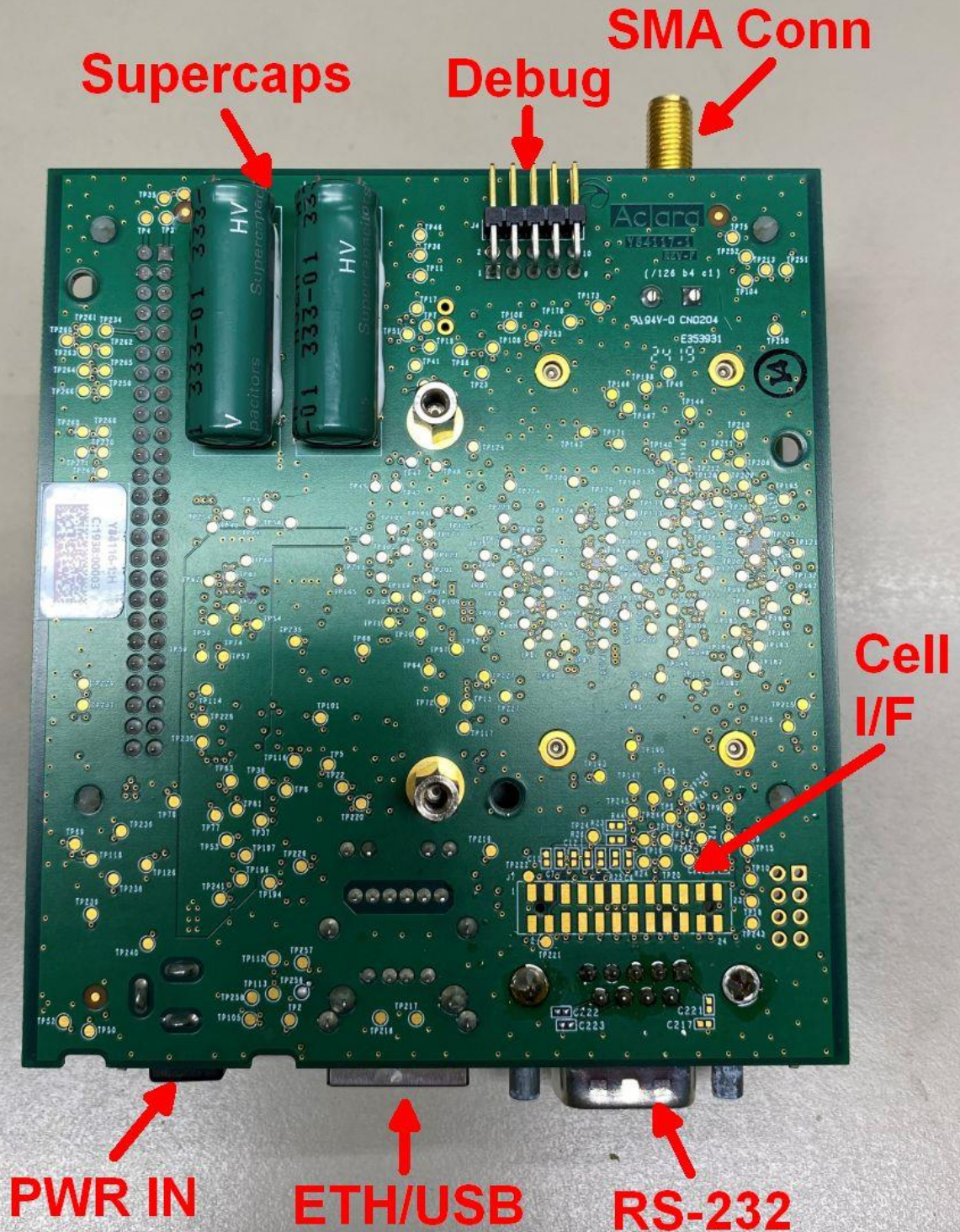
Photograph of SOM Board: Foil Side





Photograph of Host Board: Foil Side

# Edge Gateway Host Board Bottom View





Photograph of Host Board: SOM board removed

