

2018-00002
REV E
THRU
A 00004

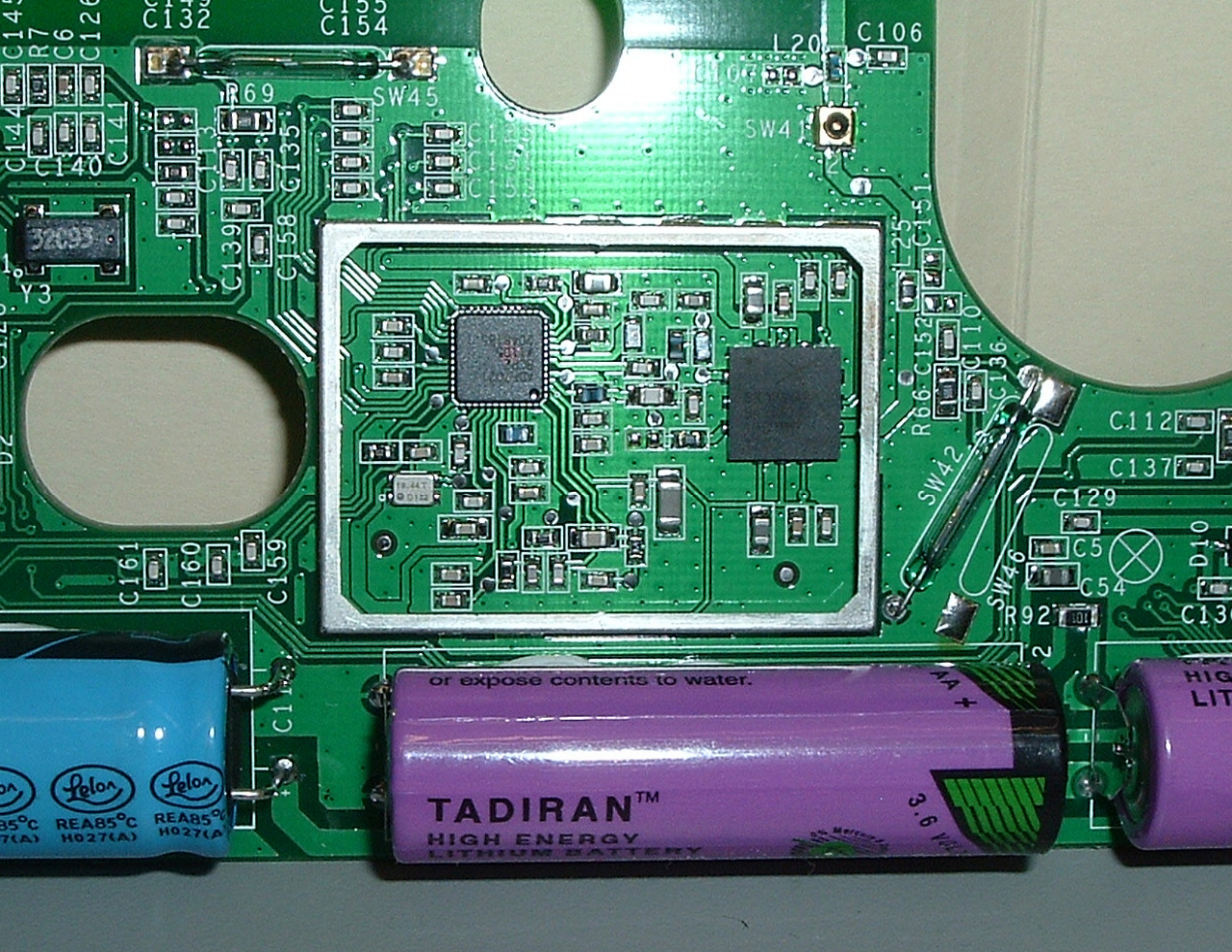
2↑

WARNING: Fire, explosion and severe burn hazard.
Do not recharge, disassemble, heat above 100°C, incinerate or otherwise compromise the battery.

WARNING: Fire, explosion and severe burn hazard.
Do not recharge, disassemble, heat above 100°C, incinerate or otherwise compromise the battery.

REAR5°C H136(A)
REAR5°C H136(A)
REAR5°C H136(A)
REAR5°C H136(A)

REAR5°C H136(A)
REAR5°C H136(A)
REAR5°C H136(A)
REAR5°C H136(A)



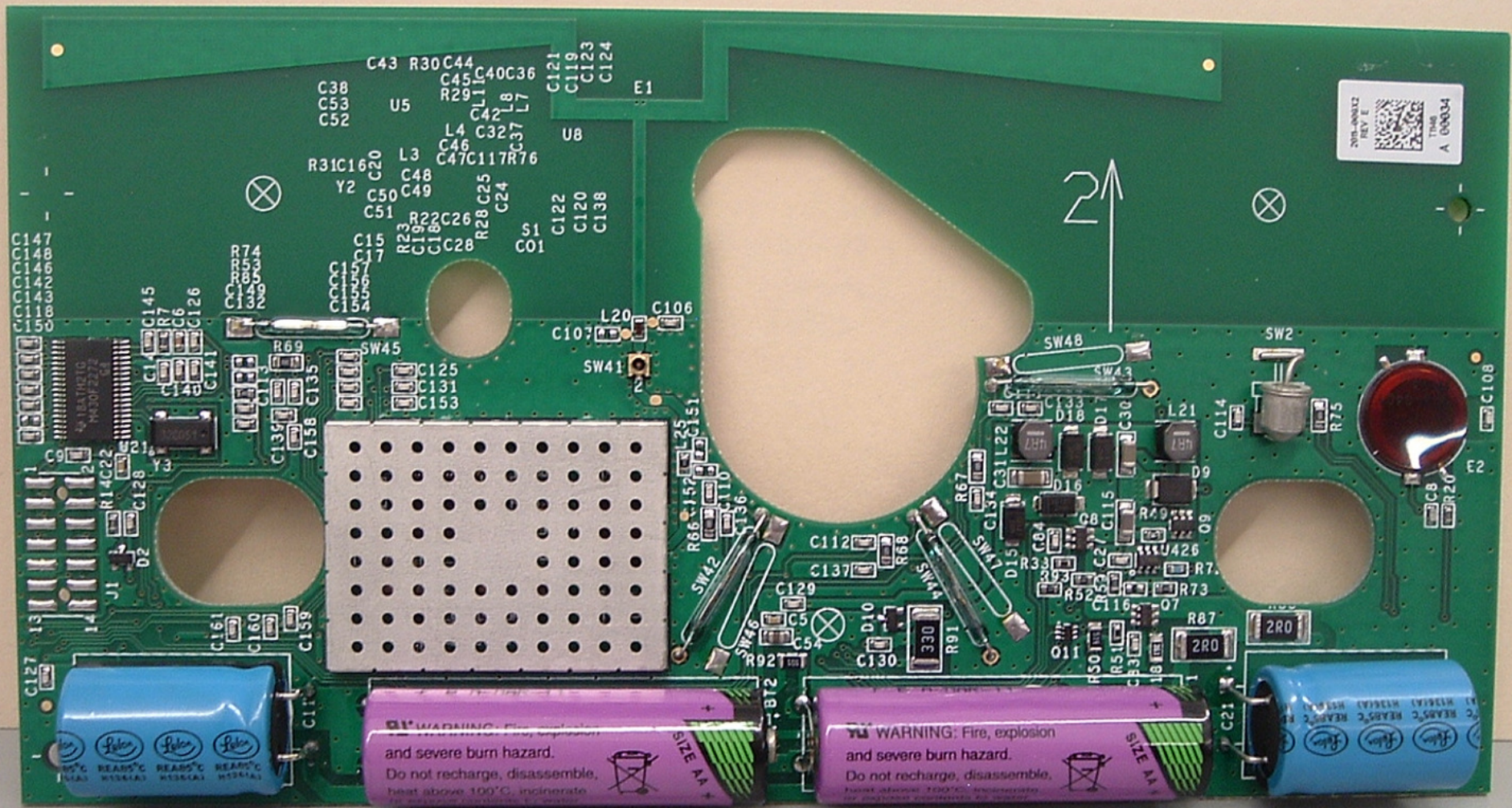
or expose contents to water.

TADIRAN™
HIGH ENERGY
LITHIUM BATTERY

3.6V

35°C REA85°C H027(A)
35°C REA85°C H027(A)
35°C REA85°C H027(A)

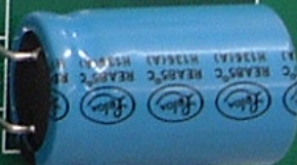
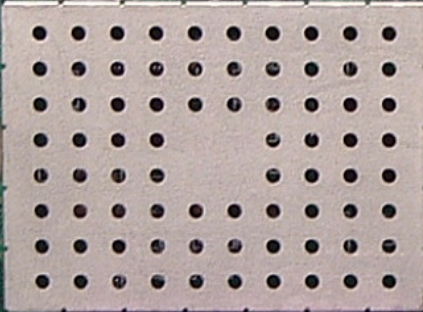
HIGH LIT



2016-00032
REV. E
TIME
A 000034

2↑

C147
C148
C146
C142
C143
C118
C150
C43
R30C44
C45
R29
C40C36
U5
L4
C32
L7
C37
L7
C121
C119
C123
C124
E1
C38
C53
C52
C20
L3
C48
C49
C50
C51
R23
R22
C26
C18
C1C28
R28
C25
C24
C01
C122
C120
C138
U8
C107
L20
C106
C105
C104
C103
C102
C101
C100
C99
C98
C97
C96
C95
C94
C93
C92
C91
C90
C89
C88
C87
C86
C85
C84
C83
C82
C81
C80
C79
C78
C77
C76
C75
C74
C73
C72
C71
C70
C69
C68
C67
C66
C65
C64
C63
C62
C61
C60
C59
C58
C57
C56
C55
C54
C53
C52
C51
C50
C49
C48
C47
C46
C45
C44
C43
C42
C41
C40
C39
C38
C37
C36
C35
C34
C33
C32
C31
C30
C29
C28
C27
C26
C25
C24
C23
C22
C21
C20
C19
C18
C17
C16
C15
C14
C13
C12
C11
C10
C9
C8
C7
C6
C5
C4
C3
C2
C1



13
TUP JM
TEST
INSP

CO-AX
11/35

1.4E
8-24-99
INS

ACLARA RF SYSTEMS
001-2011-009 REV A

