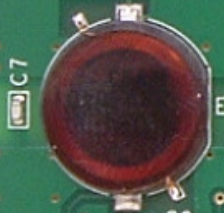
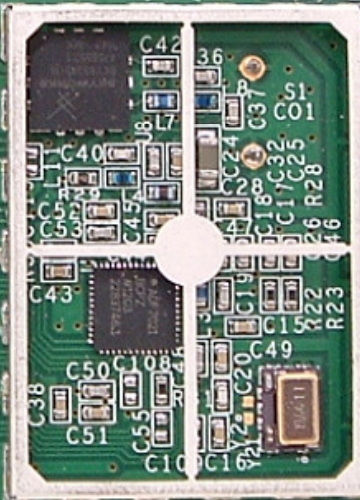


2009-09002
REV K
TECH
AU 01694

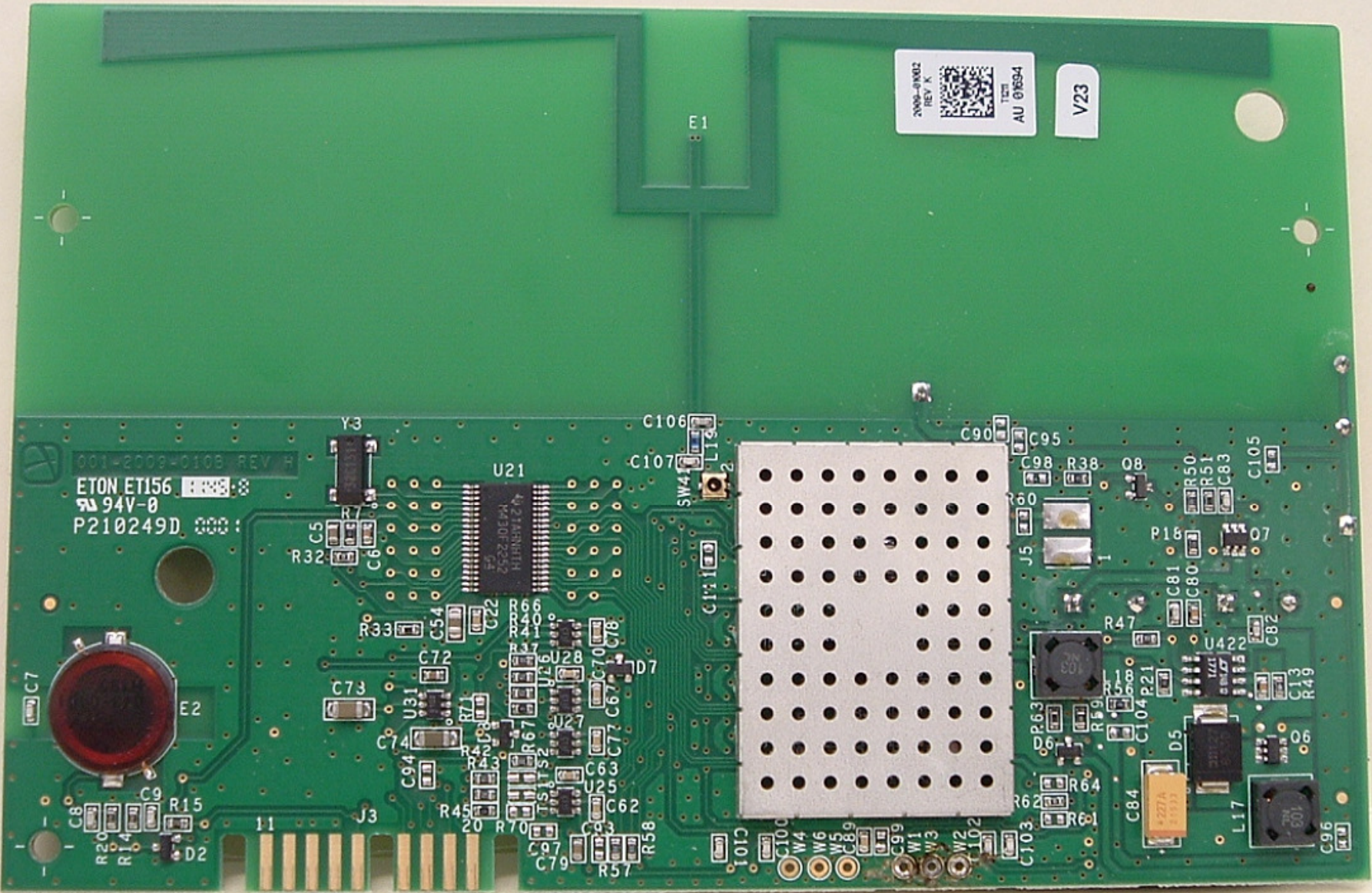
V23

E1

001-2009-0108 REV H
ETON ETI56
9A 94V-0
P210249D 000 :



The main PCB assembly features a central microcontroller (U21) with a large number of pins. It is surrounded by a dense array of components including resistors (R1-R70), capacitors (C1-C100), and integrated circuits (U22-U28). A large multi-pin connector (J3) is located at the bottom edge. A circular component (E2) is on the left side. The board is populated with numerous small surface-mount components, and various test points and jumpers are visible. The overall layout is complex and typical of a high-density electronic control board.



001-2009-0108 REV H

ETON ET156
94V-0
P210249D 000 :

2009-09-02
REV K
TOSH
AU 01694

V23

E1

E2

I1

J3

20

R45

R70

C97

C79

R57

R58

I01C

C100

W4

W6

W5

W3

C89

W1

W2

W3

I102

C103

C106

C107

SW4

L19

C90

C95

C98

R38

O8

R50

R51

C83

C105

Y3

R32

C5

R7

C6

U21

C22

R44

R46

R47

R48

R49

R50

R51

R52

R53

R54

R55

R56

R57

R58

R59

R60

R33

C54

C72

U31

R71

R42

R43

R44

R45

R46

R47

R48

R49

R50

R51

R52

R53

R54

R55

R56

R57

C73

C74

C75

C76

C77

C78

C79

C80

C81

C82

C83

C84

C85

C86

C87

C88

C89

C90

C91

C92

C93

C94

C7

R20

R14

C9

R15

D2

J3

R45

R70

C97

C79

R57

R58

I01C

C100

W4

W6

W5

W3

C89

W1

W2

W3

I102

C103

C96

R32

C5

R7

C6

U21

C22

R44

R46

R47

R48

R49

R50

R51

R52

R53

R54

R55

R56

R57

R58

R59

R60

R33

C54

C72

U31

R71

R42

R43

R44

R45

R46

R47

R48

R49

R50

R51

R52

R53

R54

R55

R56

R57

C73

C74

C75

C76

C77

C78

C79

C80

C81

C82

C83

C84

C85

C86

C87

C88

C89

C90

C91

C92

C93

C94

C7

R20

R14

C9

R15

D2

J3

R45

R70

C97

C79

R57

R58

I01C

C100

W4

W6

W5

W3

C89

W1

W2

W3

I102

C103

C96

R32

C5

R7

C6

U21

C22

R44

R46

R47

R48

R49

R50

R51

R52

R53

R54

R55

R56

R57

R58

R59

R60

R33

C54

C72

U31

R71

R42

R43

R44

R45

R46

R47

R48

R49

R50

R51

R52

R53

R54

R55

R56

R57

C73

C74

C75

C76

C77

C78

C79

C80

C81

C82

C83

C84

C85

C86

C87

C88

C89

C90

C91

C92

C93

C94

C7

R20

R14

C9

R15

D2

J3

R45

R70

C97

C79

R57

R58

I01C

C100

W4

W6

W5

W3

C89

W1

W2

W3

I102

C103

C96

R32

C5

R7

C6

U21

C22

R44

R46

R47

R48

R49

R50

R51

R52

R53

R54

R55

R56

R57

R58

R59

R60

R33

C54

<