

Omni-Directional 360°/10 dBd

Mechanical specifications

Length		
Overall	3393 mm	134 in
Radome	2893 mm	114 in
Diameter	Ø65 mm	2.6 in
Weight	12 kg	26.5 lbs
Wind area	0.2 m ²	2.4 ft ²
Wind load at 50 m/s	351 N	79 lbs

Support Pipe

Aluminum alloy diameter Ø70 mm (2.76 in), length 500 mm (19.7).

Antenna consisting of aluminum alloy. Dipoles covered by a polyurethane painted fiberglass radome.

Mounting Bracket: #36312000 Standard -or- #36413001 Offset

Downtilt Bracket: N/A

Electrical specifications

Frequency Range	850-950 MHz
Impedance	50Ω
³⁾ Connector	N, NE, DIN, EDIN
¹⁾ VSWR	≤1.43:1
Polarization	Vertical
¹⁾ Gain	10 dBd
²⁾ Power Rating	500 W
¹⁾ Half Power Angle	
H-Plane	360°
E-Plane	7°
¹⁾ Lobe Tilt	1.25°
¹⁾ Null Fill	25%
Lightning Protection	Direct Ground

¹⁾ Typical Values

²⁾ Power Rating limited by connector only.

³⁾ NE indicates an elongated N Connector.

E-DIN indicates an elongated DIN Connector.

Improvements to mechanical and/or electrical performance of the antenna may be made without notice.

BCD-85010 ___ 25%

When ordering, replace “___” with connector type.

Radiation-pattern¹⁾

Contact Antel's marketing department for patterns.

Tel. 815-381-7817
E. antel@antelinc.com



806-960 MHz



Antel's Exclusive 3T (True Transmission Line Technology) Antenna Design:

- A 1¼" four-channel extrusion running the entire length of the antenna for unmatched strength and rigidity.
- Durable brass feedline design that eliminates the need for solder joints in the signal path.
- A non-collinear system with access to every radiating element for broad bandwidth and superior performance.
- Air as insulation for virtually no internal signal loss.

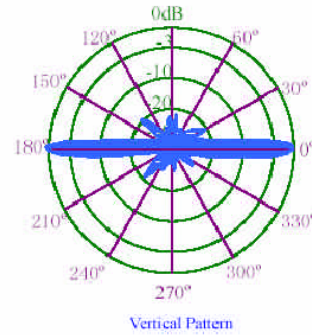
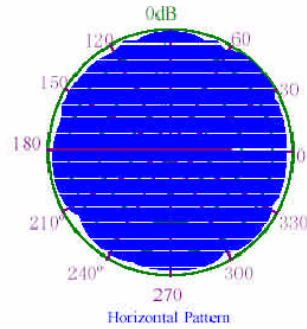
Every Antel antenna is under a five-year limited warranty for repair or replacement.

850-950 MHz

Antel[®]
INTERNATIONAL, INC.

Revision Date: 2/21/03

HPOL Omni Antenna Specifications



PAWSAH9-9 9dBi Horizontally Polarized Omnidirectional Antenna

Freq	902-928MHz
Gain	9dBi
Hor Beamwidth	360 deg
Ver Beamwidth	18 deg
VSWR	1:1.5 Max
Impedance	50 Ohm
OEM Pricing	
1-499	\$340
500+	\$325
2500+	\$315

Construction	Aluminum Extrusion, powder coat painted
Polarity	Horizontal
Operating Temp	-40 to +70 Deg C
Lightning Protection	DC Grounded
Pole Mount	3 inch max
Length x Width x Depth	Est. 63" x 12" x 4"
Weight	Est. 12 Lbs
Connector	N Female
Status	In Development
Samples	8 weeks
Production	14 weeks





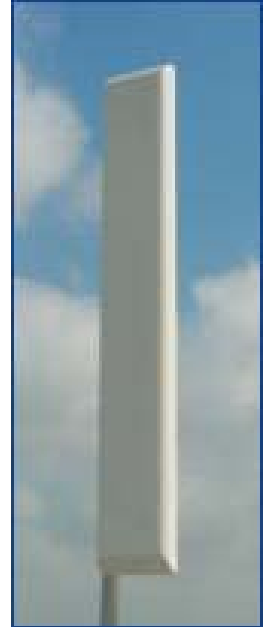
902 - 928 MHz 120 degree Dual Polarity Antenna

Alvarion Part Number 999436

Specifications

Electrical

Frequency range	902 - 928 MHz
GAIN, typ.	13.5 dBi typical (14.6 dBi max.)
VSWR, max.	1.5 : 1
3 dB Beam Width - Azimuth, typ.	120° ± 3°
3 dB Beam Width – Elevation, typ.	11°
Polarization	Horizontal & Vertical
Impedance	50 Ohms
Power rating	400 W
Lighting Protection	DC Grounded



Mechanical and Environmental

Dimensions (LxWxD)	1200x160x80 mm
Connectors	2 x N-Type Female
Radome	Plastic, UV Protected
Base Plate	Aluminium
Temperature (Operating)	-45°c to +75°c
Service Life	> 20 Years
Windload	66 lbs @ 100 mph
Mounting	Pole mount w/ downtilt
Weight	13.5 lbs (6.1 kg)

