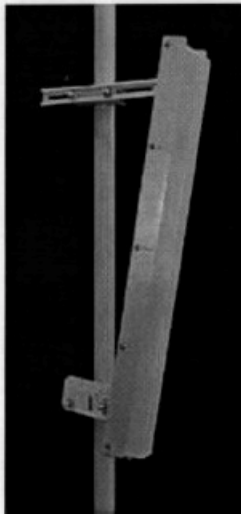




**AN1709 Sector Antenna
P/N 901709**

2400 - 2485 MHz



The TA-2304-2-ISM is a vertically polarized sectoral antenna which has adjustable side panels for 60-160 degree azimuth patterns. The antenna consists of a printed dipole array enclosed in an aluminum base with a UV stabilized radome for superior weatherability. It is designed for wireless data in the ISM band and is at DC ground for lightning protection.

Electrical Specifications

Frequency Range: 2400-2485 MHz
Gain: (dBi) 17.5 @ 60° 15.5 @ 90°
 14.5 @ 120° 13 @ 160°
VSWR: 1.5:1 max.
Front/Back Ratio: 20 dB min.
Polarization: Vertical
Power Rating: 200 Watts
H-Plane Beamwidth: 60, 90, 120, 160 degrees
E-Plane Beamwidth: 7.2 degrees
Cross Pol. Discrimination: 20 dB min.
Impedance: 50 ohms nominal
Termination: N female (7/16 DIN optional)

Typical Mid band values. (For details, contact factory)

Mechanical Specifications

Length: 40 in. (1016 mm)
Width: 4.9 in. (124 mm)
Depth: 4.6 in. (117 mm)
Weight (Incl. Clamps): 8 lb. (3.6 kg)
Rated Wind Velocity: 125 mph (200 km/h)
Hor. Thrust at rated wind: 86 lb. (39 kg)
Mechanical Downtilt: 0 - 15 (optional)
Mounting Pipe: 0.75 - 3.0 in. (19 - 76 mm)

Materials

Radiating Elements: Plated copper on PCB
Reflector: Irridited aluminum
Radome: Gray UV stabilized ASA
Clamps: Aluminum and HDG steel

