



Photo3. Top view, modules with covers

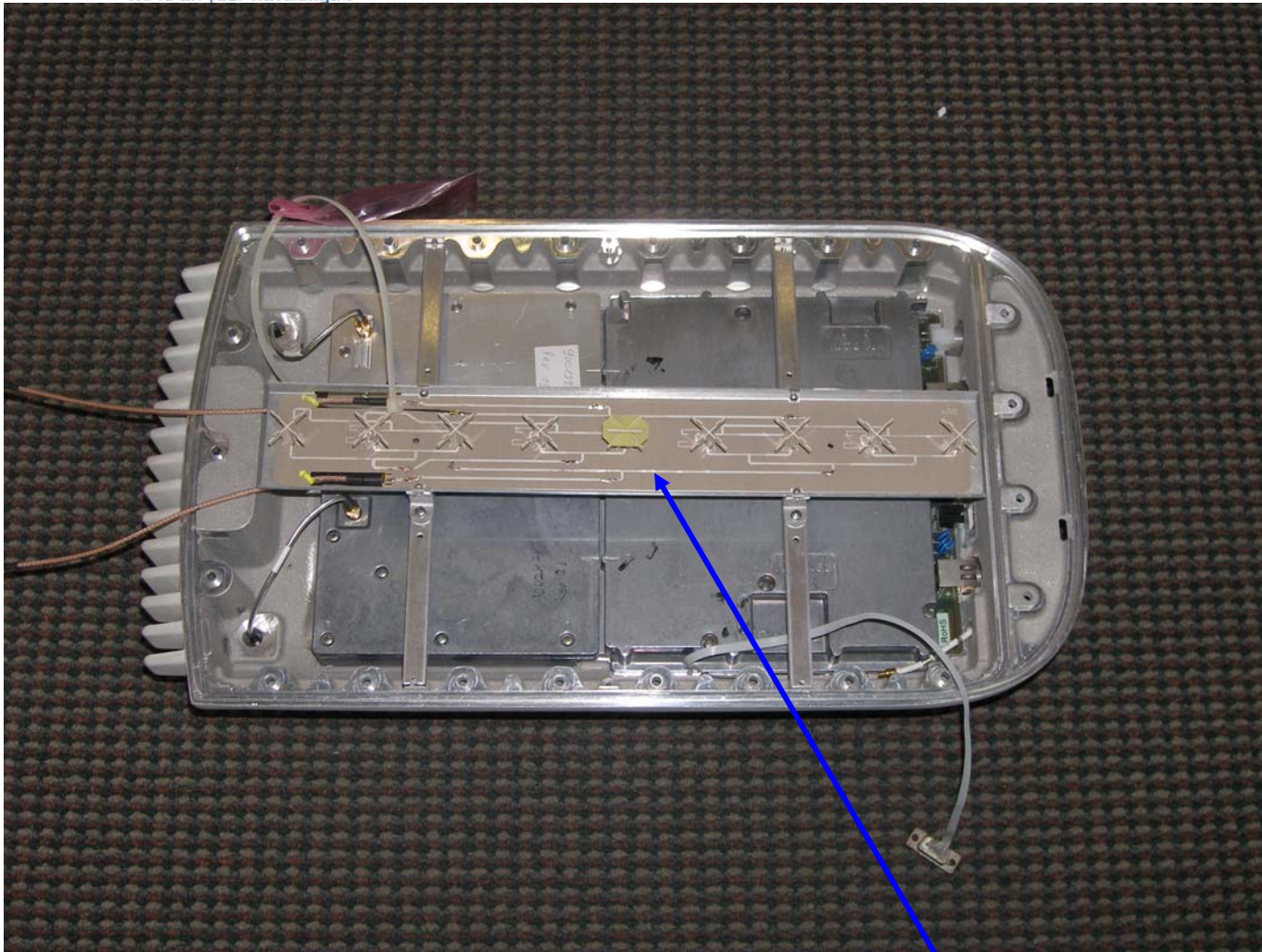


Photo4. view with Internal antenna assembled

Internal antenna



Photo5. Internal antenna



Photo6 View with one radio assembled



Photo7 . Digital card PCB view

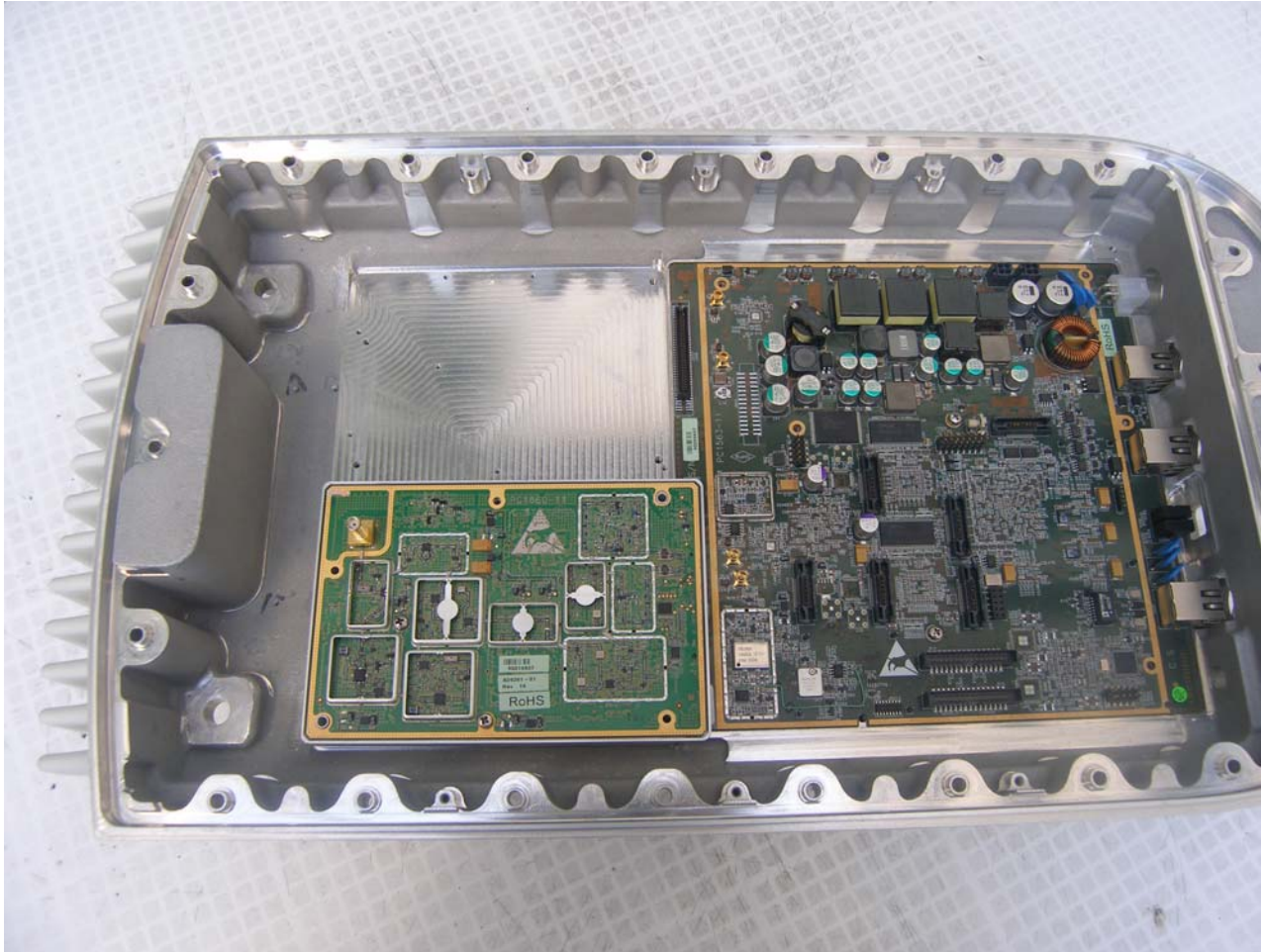


Photo8. Digital card and radio with RF covers removed



Photo9. Digital card and two radio modules CS view

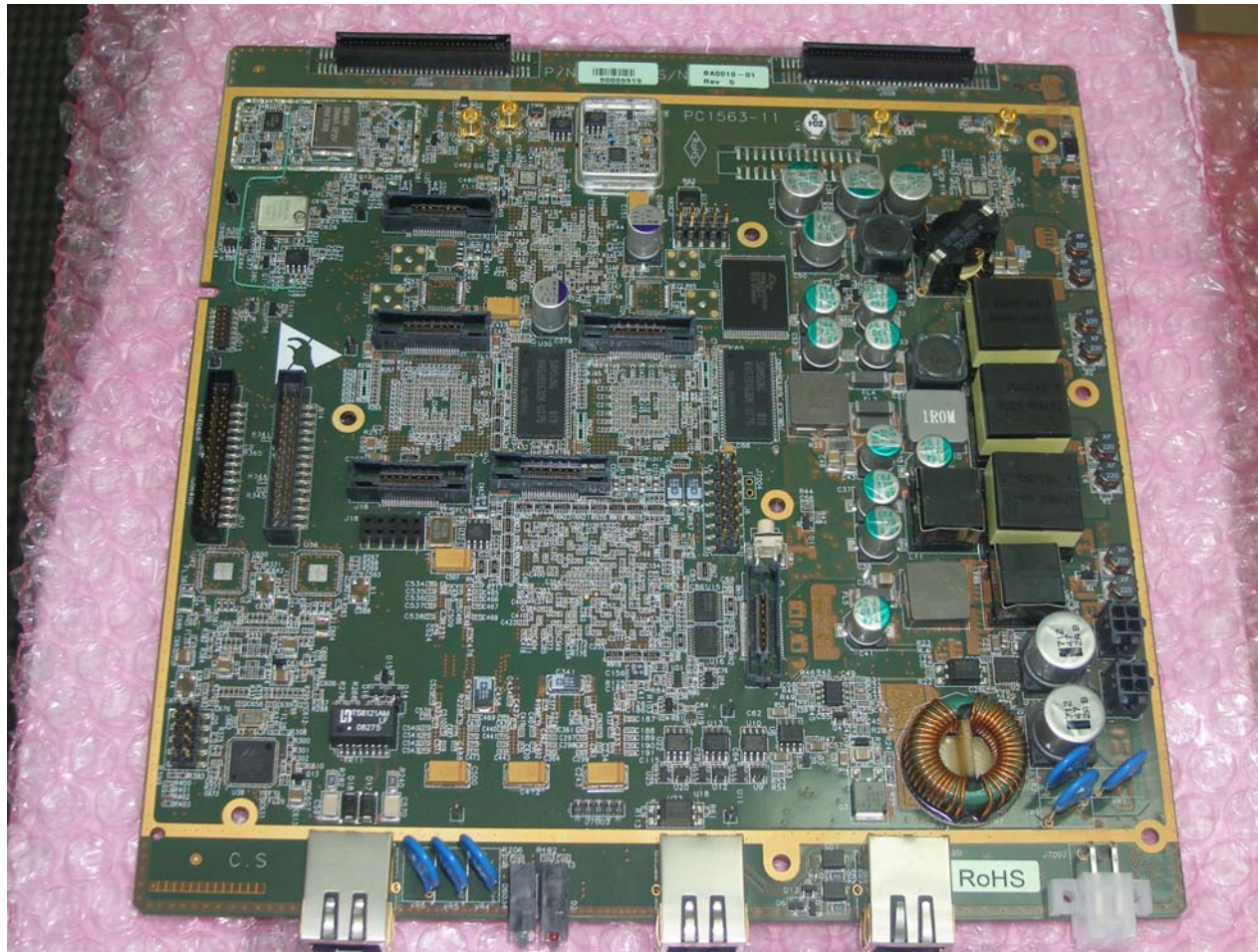


Photo10 Digital card CS view



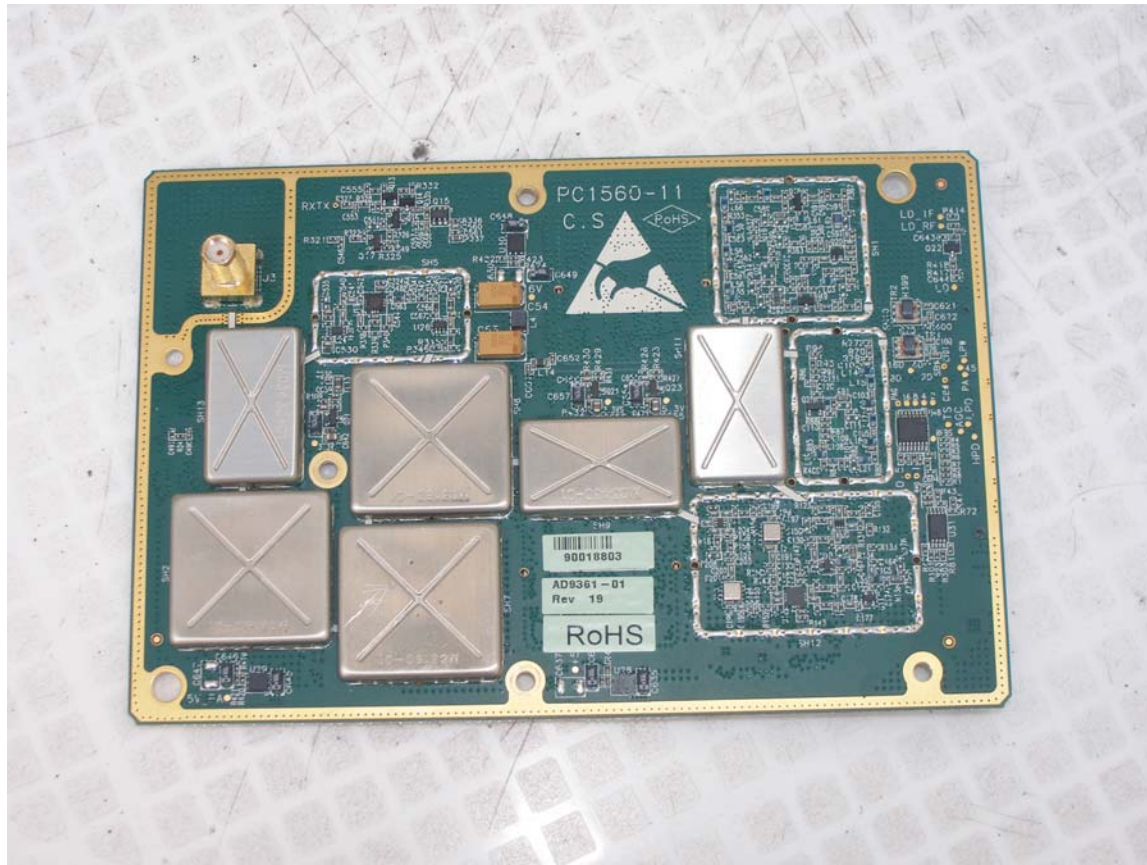


Photo11 . Radio module CS view

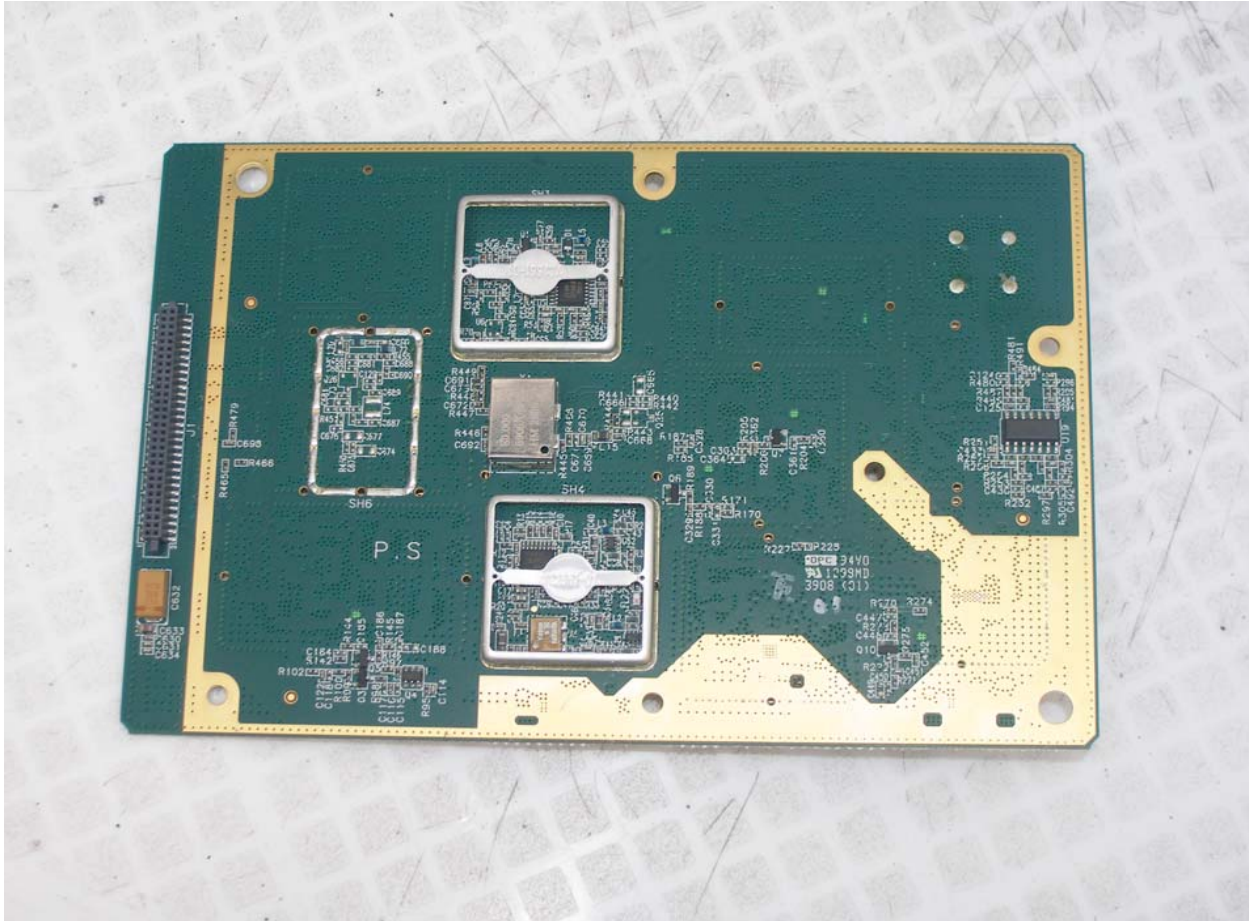


Photo12 Radio module PS view