

Testing and certification of,  
consultancy and research concerning,  
electronic and electric appliances,  
systems, installations and  
telecommunication systems

---

**INTERNAL PHOTOGRAPHS OF A 2.4 GHz RLAN,  
BRAND BREEZECOM, TYPES AP-DS.11, SA-DS.11,  
WBS-DS.11 AND WBC-DS.11**

**FCC ID: LKT-DS11**

|                              |          |   |
|------------------------------|----------|---|
| <b>Accredited by</b>         | <b>:</b> | <b>STERLAB accreditation number L029<br/>D.A.R., TTI-P-G.127/96-00</b>                    |
| <b>Competent body</b>        | <b>:</b> | <b>Article 10-2 EMC Directive</b>   |
| <b>Notified body</b>         | <b>:</b> | <b>Article 10-5 EMC Directive<br/>Low Voltage Directive<br/>Number 0122 TTE Directive</b> |
| <b>Designated laboratory</b> | <b>:</b> | <b>TTE Directive</b>  |
| <b>Notified test service</b> | <b>:</b> | <b>Automotive Directive</b>   |
| <b>FCC listed</b>            | <b>:</b> | <b>31040/SIT</b>  |
| <b>VCCI listed</b>           | <b>:</b> | <b>R 592 and C 507</b>  |
| <b>Certification body</b>    | <b>:</b> | <b>Electrical Products Safety<br/>Regulation Hong Kong</b>                                |

Nederlands Meetinstituut

P.O. Box 15  
9822 ZG Niekerk (NL)  
Smidshornerweg 18  
9822 TL Niekerk (NL)

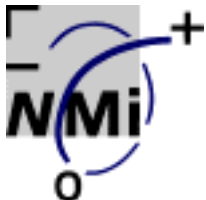
Telephone: +31 594 505005  
Telefax: +31 594 504804  
E-mail: NMI@NMI.nl

NMI B.V. (Chamber of Commerce Haaglanden No. 27228701)

Offices: Delft, Bergum, Dordrecht, Niekerk, Utrecht,  
Tinton Falls NJ (USA), Kawasaki (Japan), Hortolândia SP (Brazil)

Subsidiary companies:

NMI Certin B.V. (27233418)  
NMI Van Swinden Laboratorium B.V. (27228703)  
NMI International B.V. (27239176)



Test standard: FCC part 15  
Description of EUT: 2.4 GHz RLAN  
Manufacturer: No Wires Needed B.V.  
Brand mark: BreezeCOM  
FCC ID: LKT-DS11

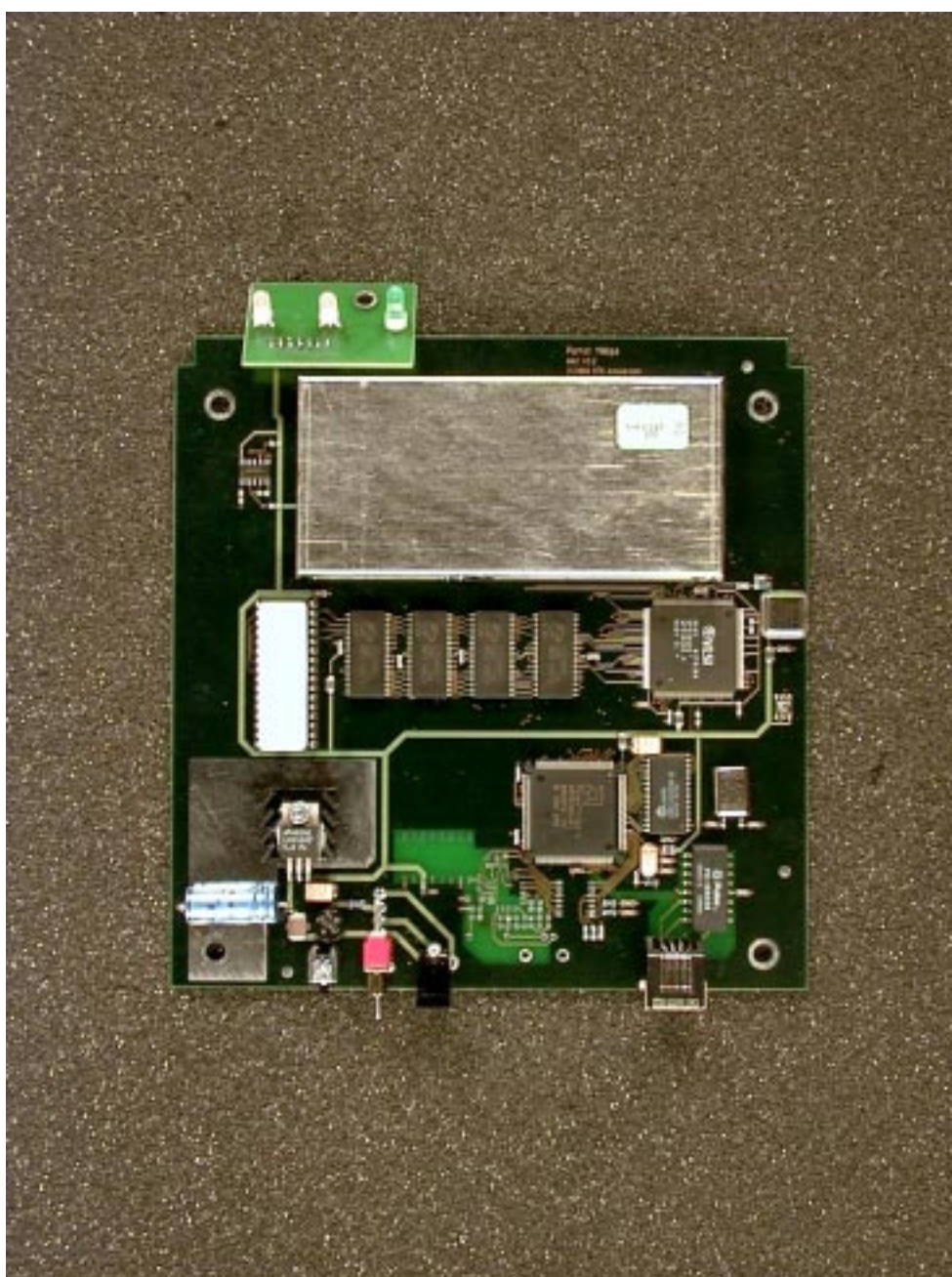
---

## **Table of contents**

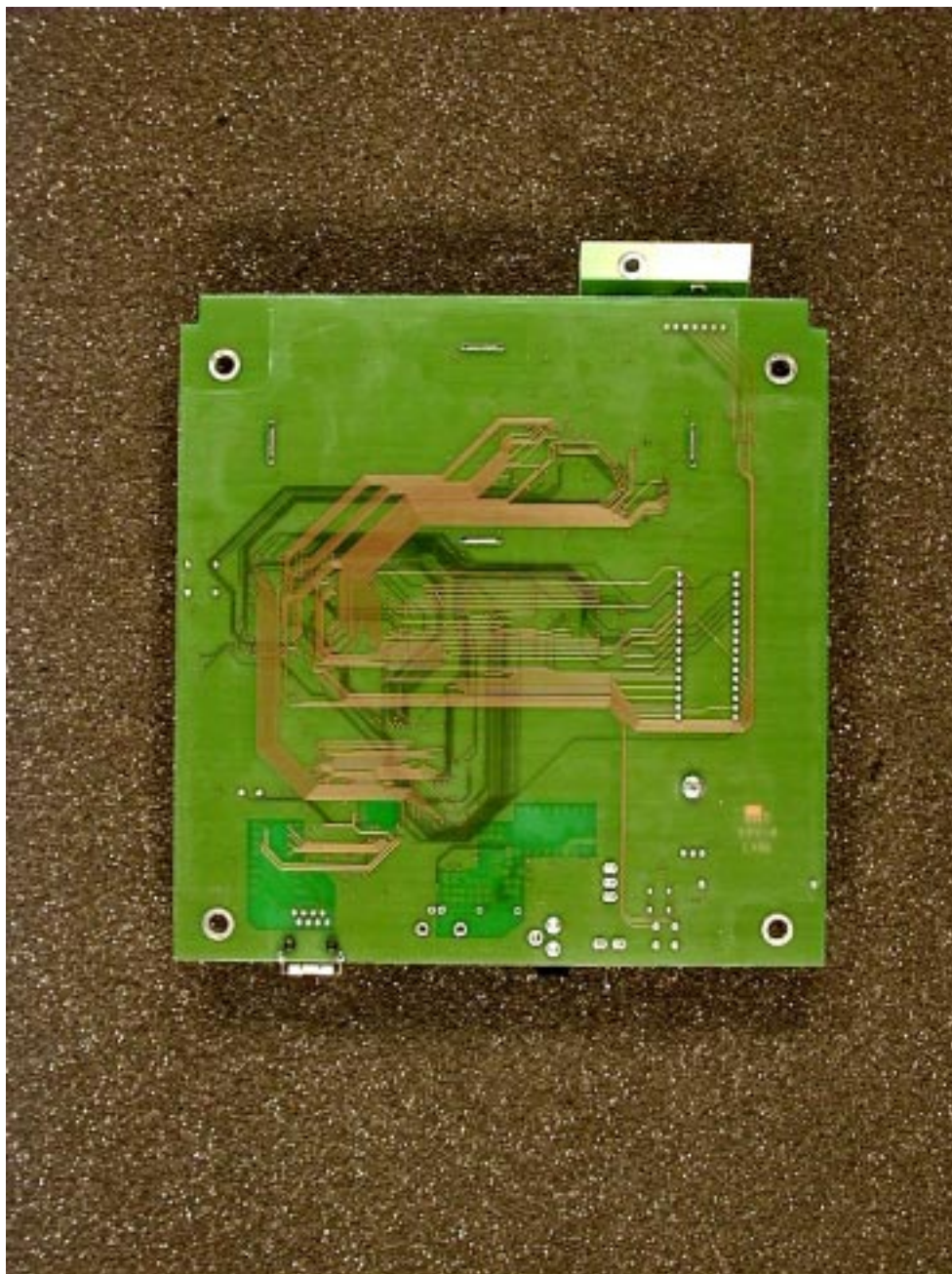
|          |   |          |
|----------|---|----------|
| <b>1</b> | <b>Internal photographs of the test item.....</b>     | <b>3</b> |
| 1.1      | <i>Top view of interior of the equipment.....</i>     | <i>3</i> |
| 1.2      | <i>Bottom view of interior of the equipment .....</i> | <i>4</i> |
| 1.3      | <i>Top view of RF PCB .....</i>                       | <i>5</i> |
| 1.4      | <i>Bottom view of RF PCB.....</i>                     | <i>6</i> |

## 1 Internal photographs of the test item

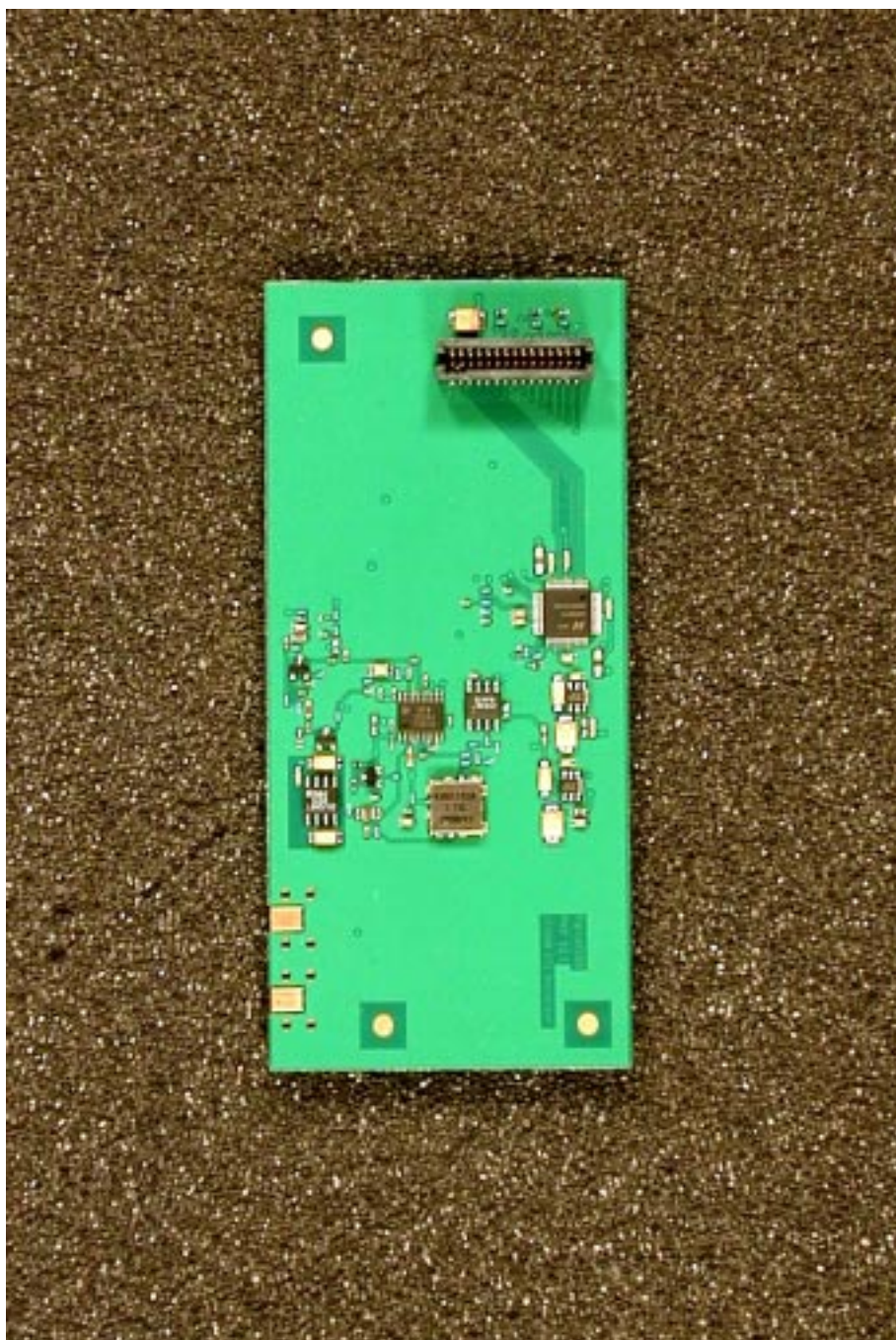
### 1.1 Top view of interior of the equipment



## 1.2 Bottom view of interior of the equipment



### 1.3 Top view of RF PCB



#### 1.4 Bottom view of RF PCB

