



Photo3. ODU half section view



Photo4. ODU Radio open , two half sections

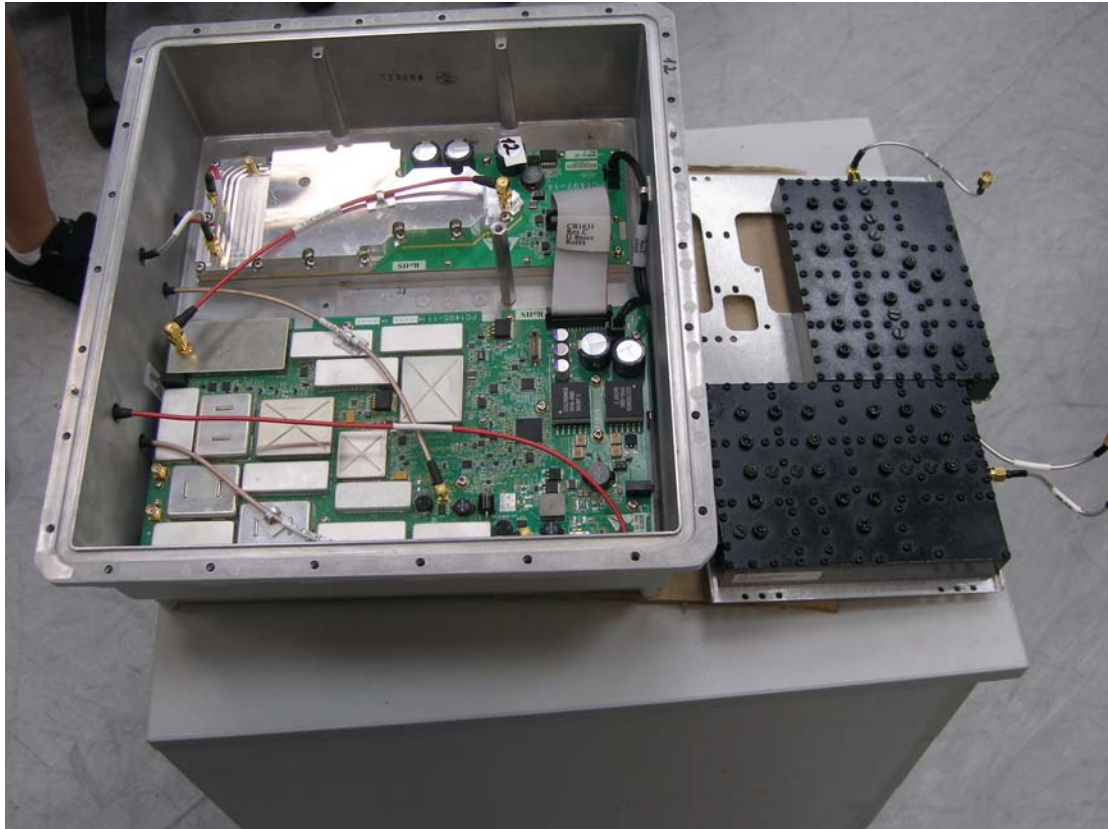
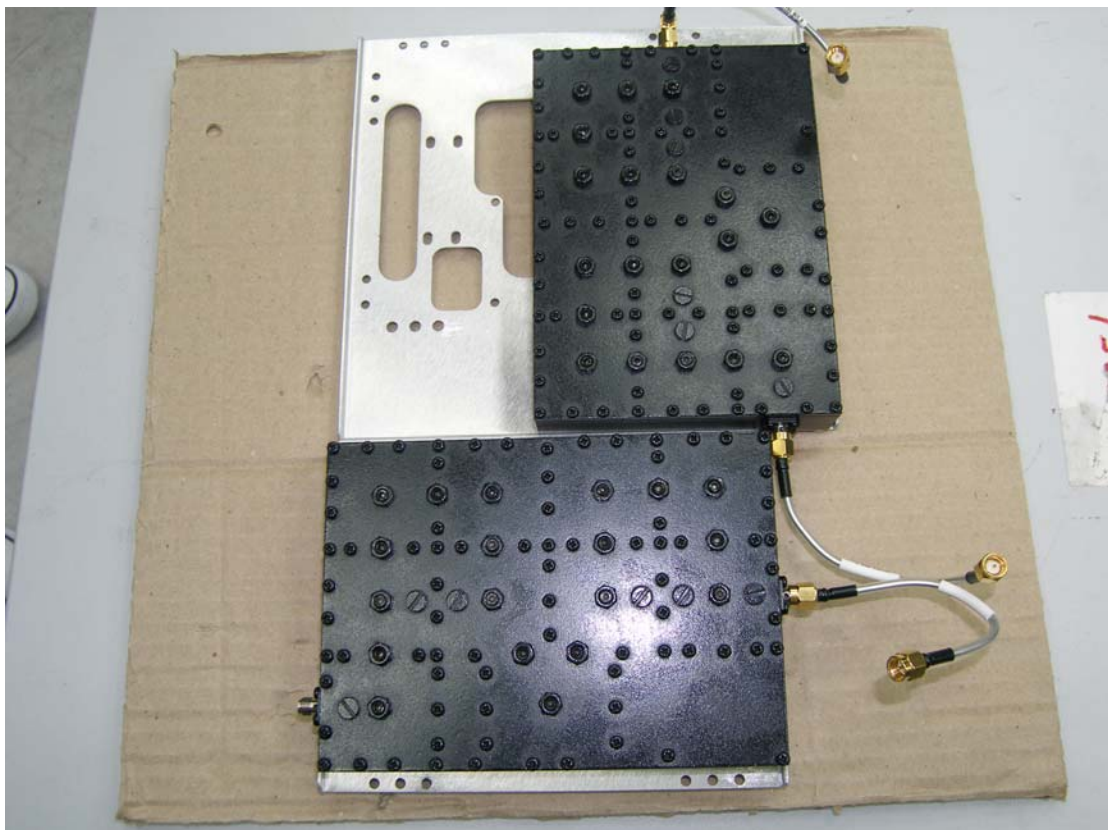


Photo5 . ODU open radio , internal view and RF filters



Phot6. RF filters

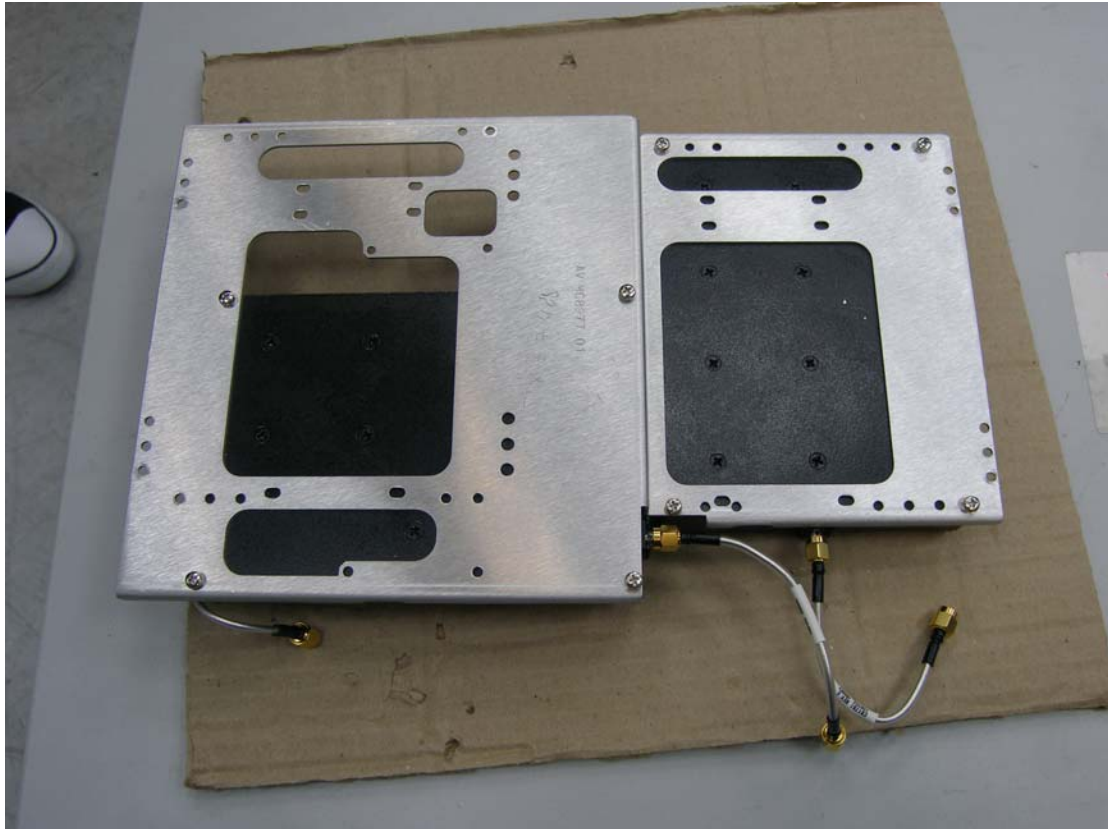


Photo7. RF filters back view

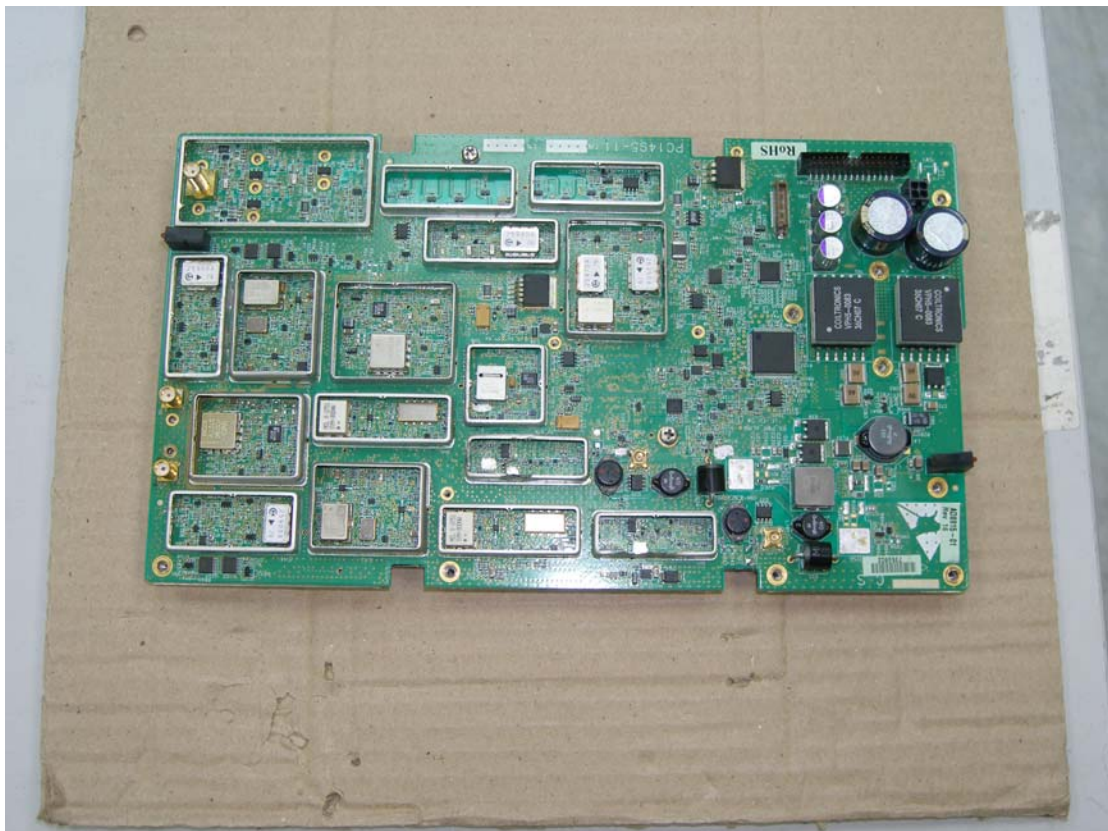


Photo8. PCB CS: basic ,PS, digital and radio part

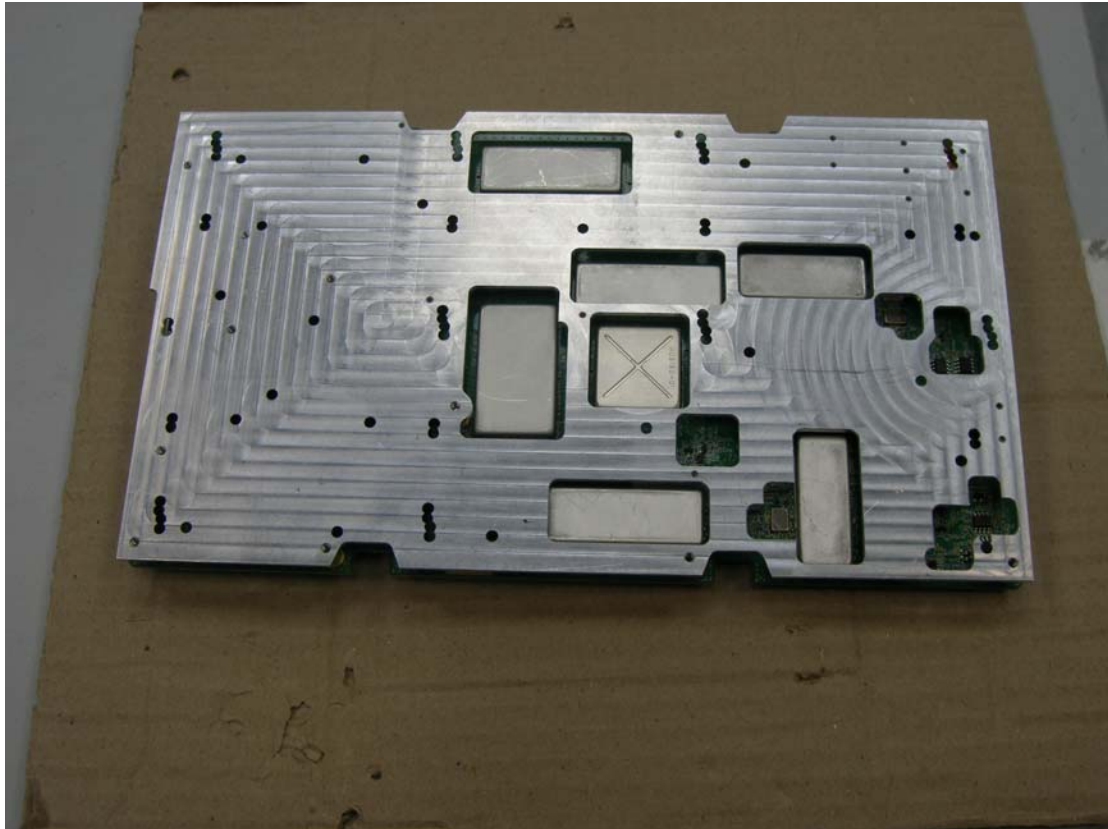


Photo9. Heat sink of basic board

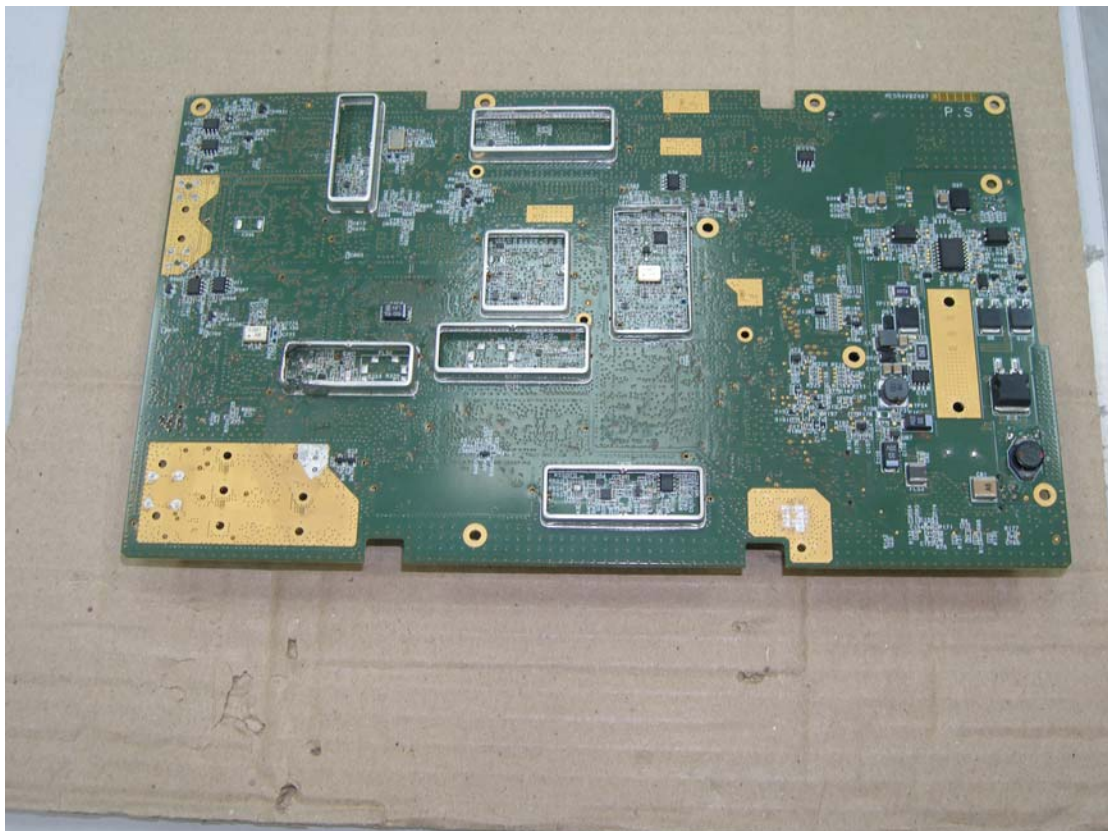


Photo10. PCB PS: basic PS, digital and radio part

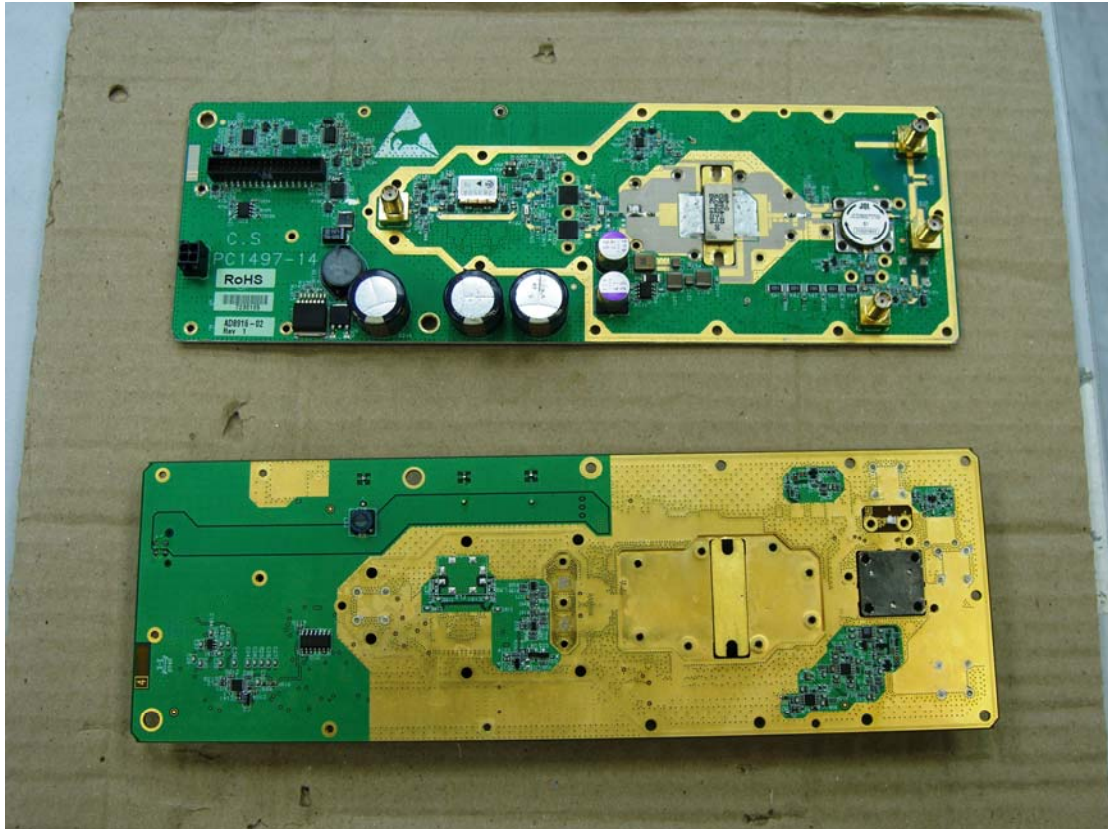


Photo11. HP amplifier boards PS and CS



Photo12 . view with external filter



Photo 13. external filter